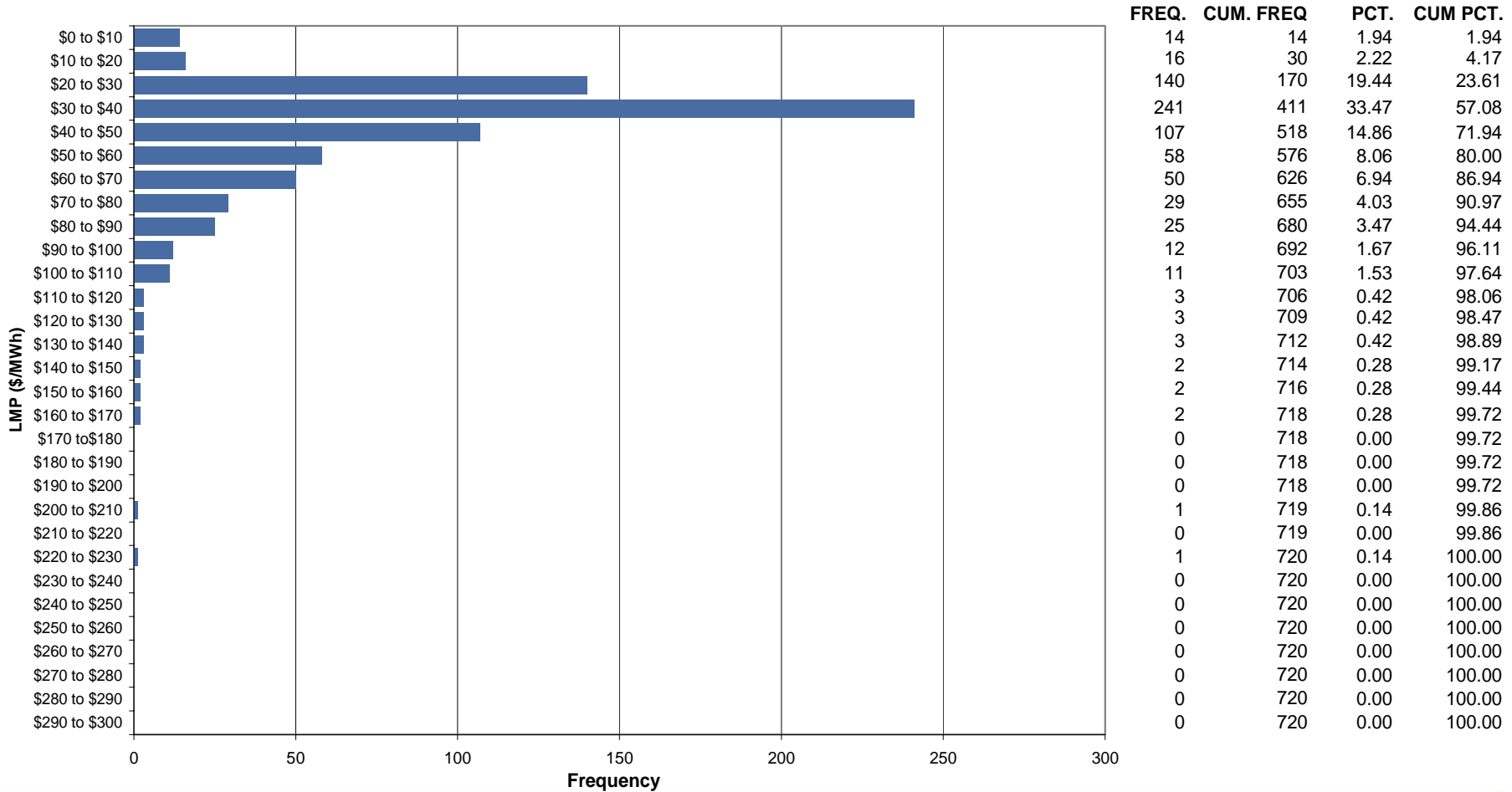




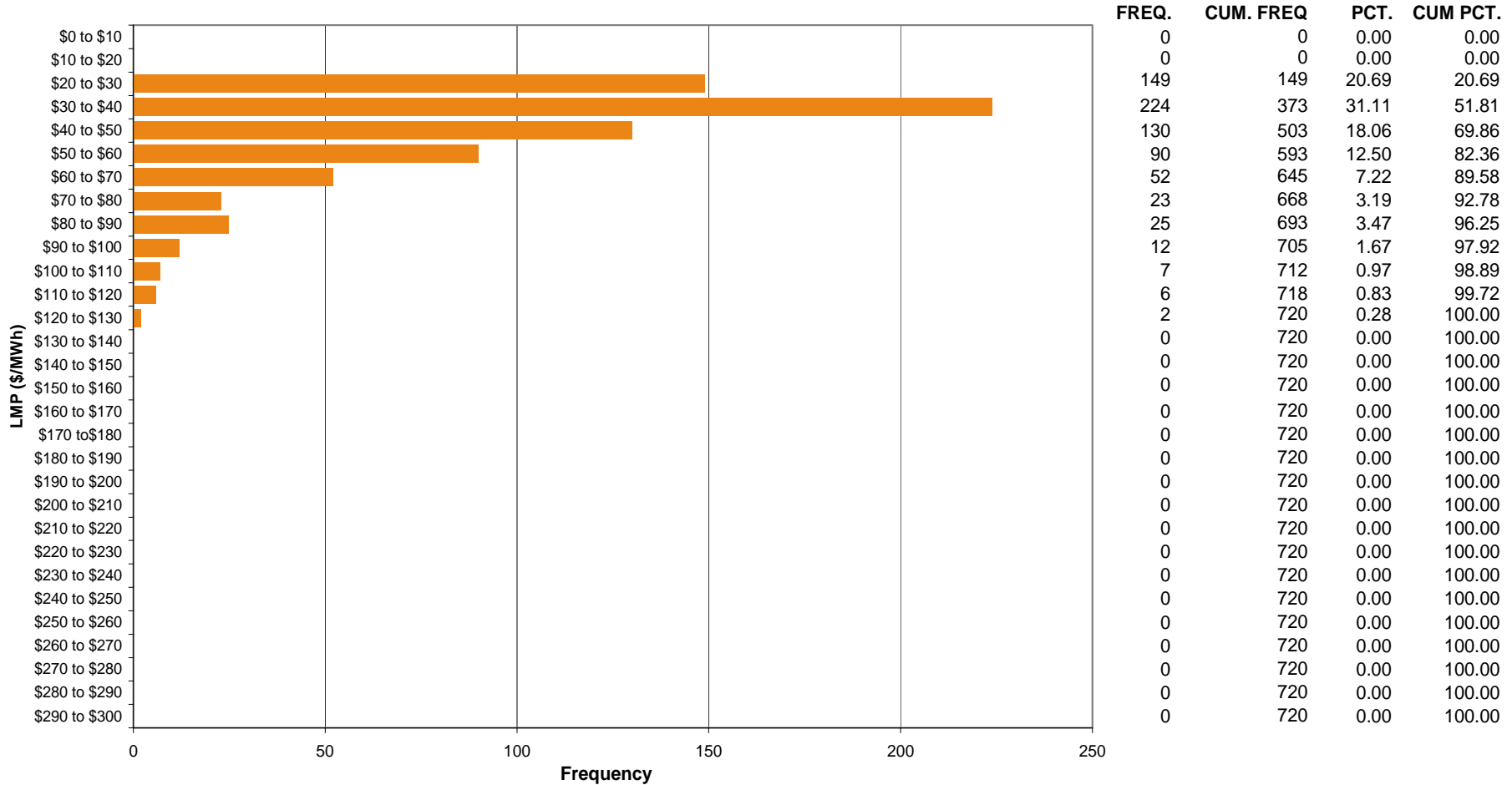
AEP Control Zone Market Monitoring Report for November 2005

Market Monitoring Unit
January 2006

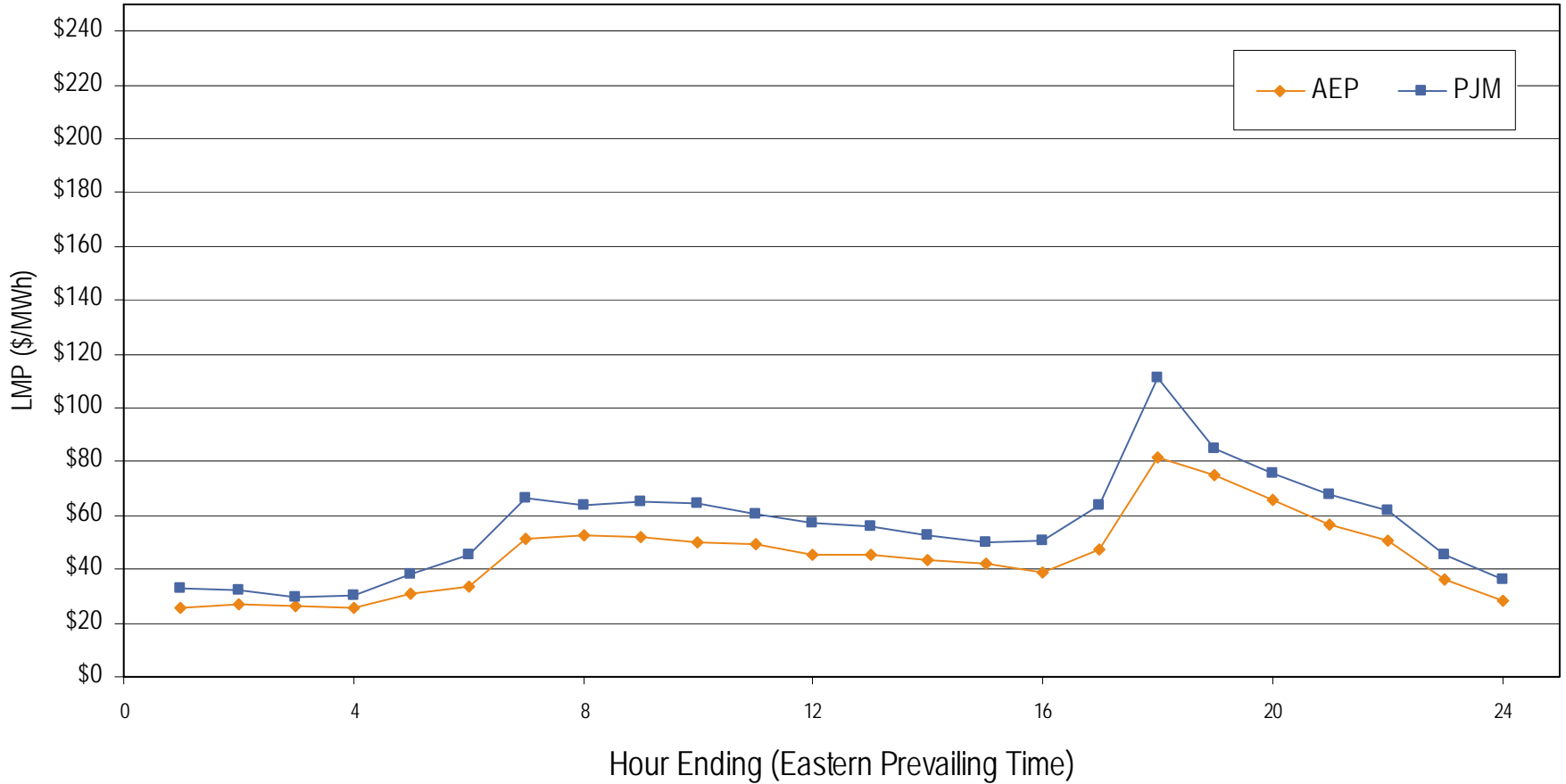
Frequency Distribution by Hours of AEP Real-time LMP November 2005



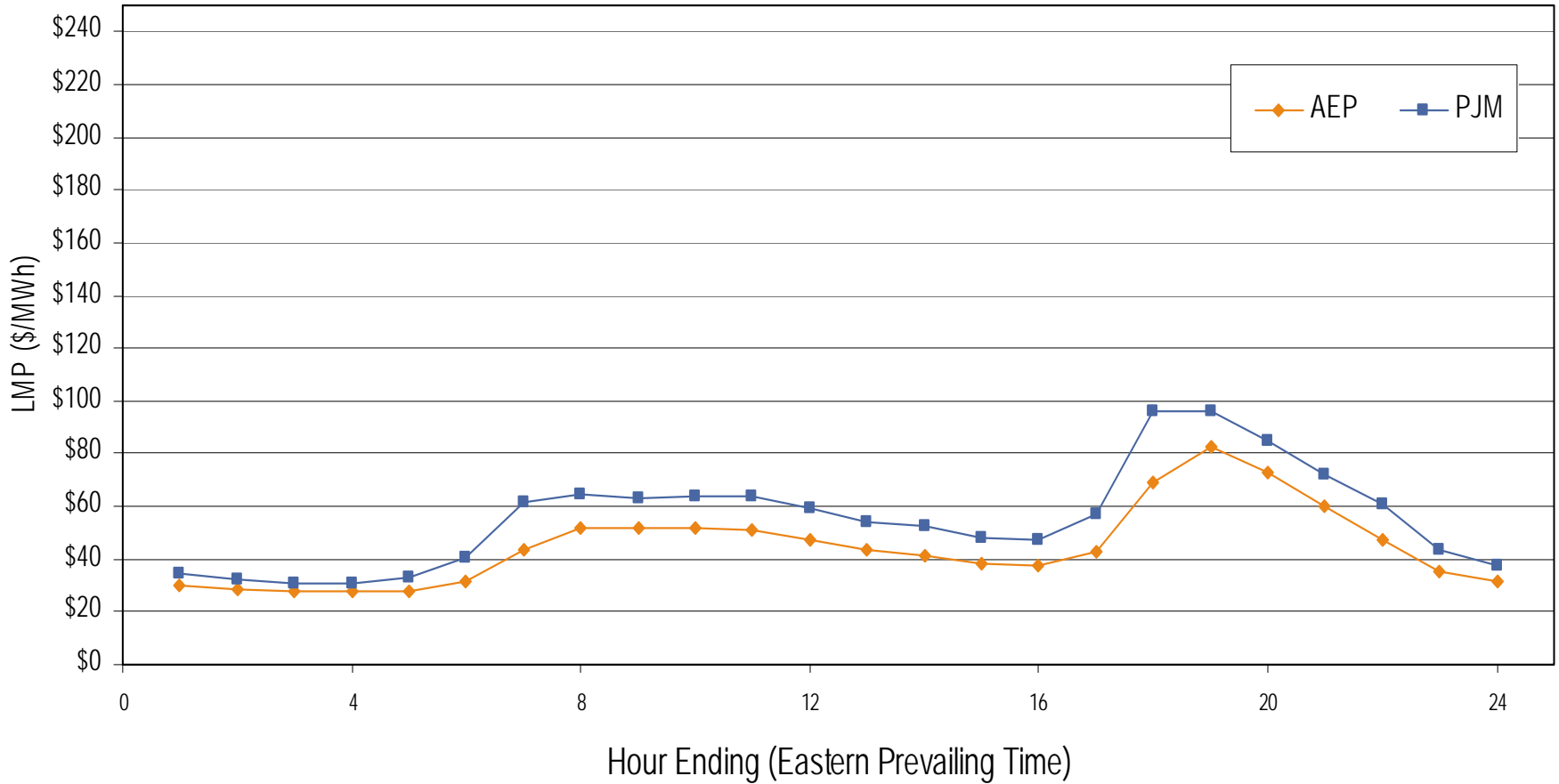
Frequency Distribution by Hours of AEP Day-ahead LMP November 2005



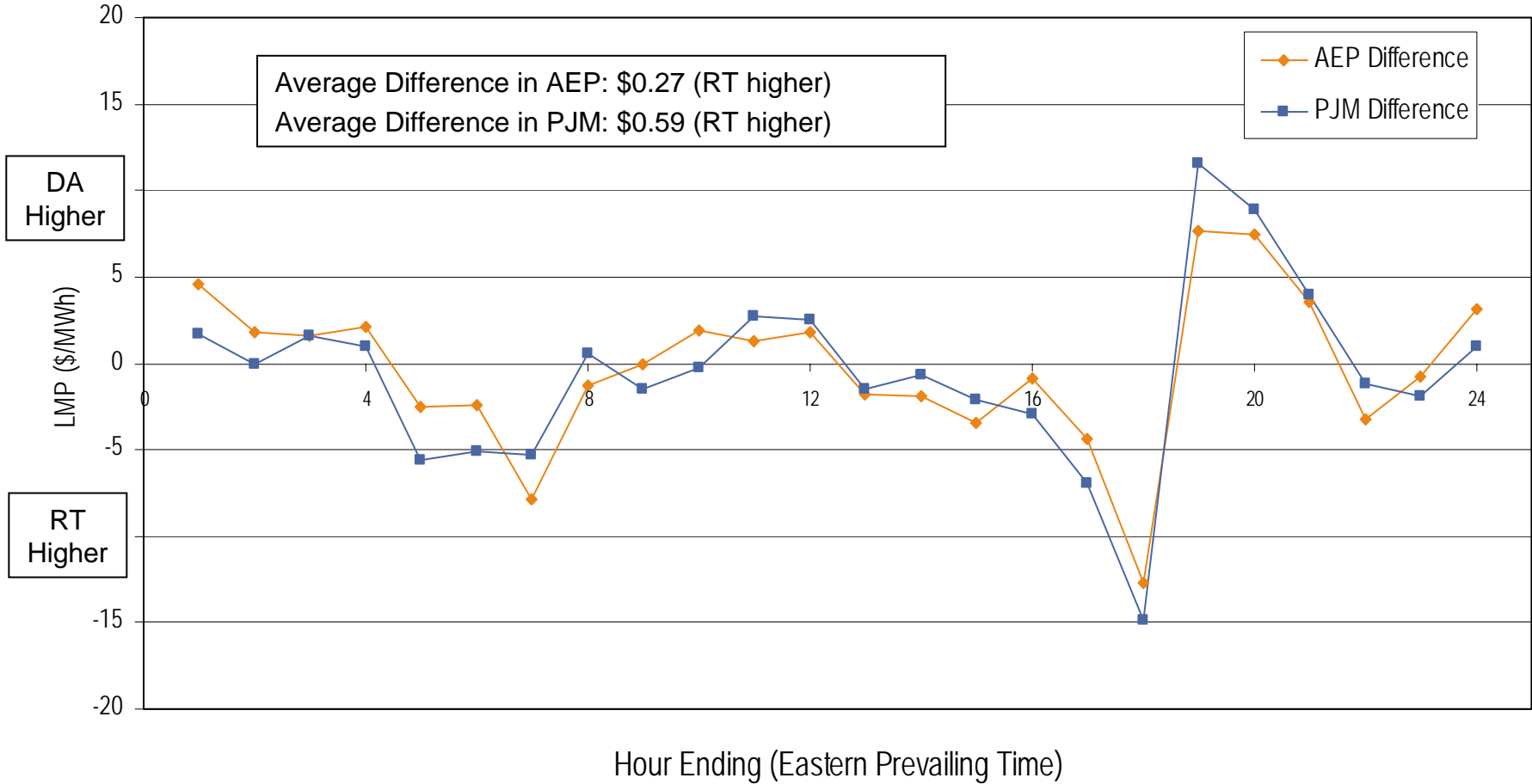
Average Hourly Real-Time LMP November 2005



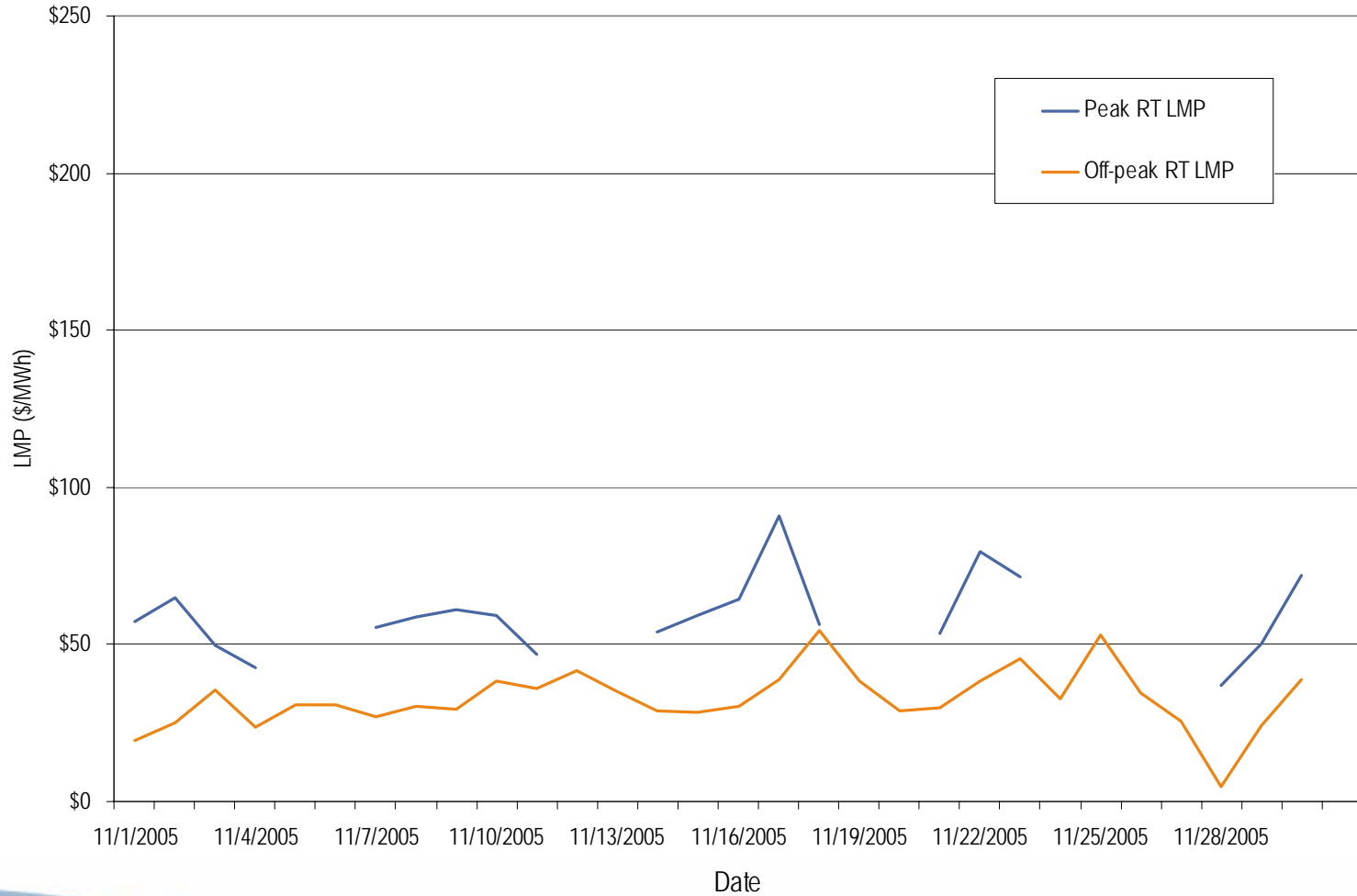
Average Hourly Day-Ahead LMP November 2005



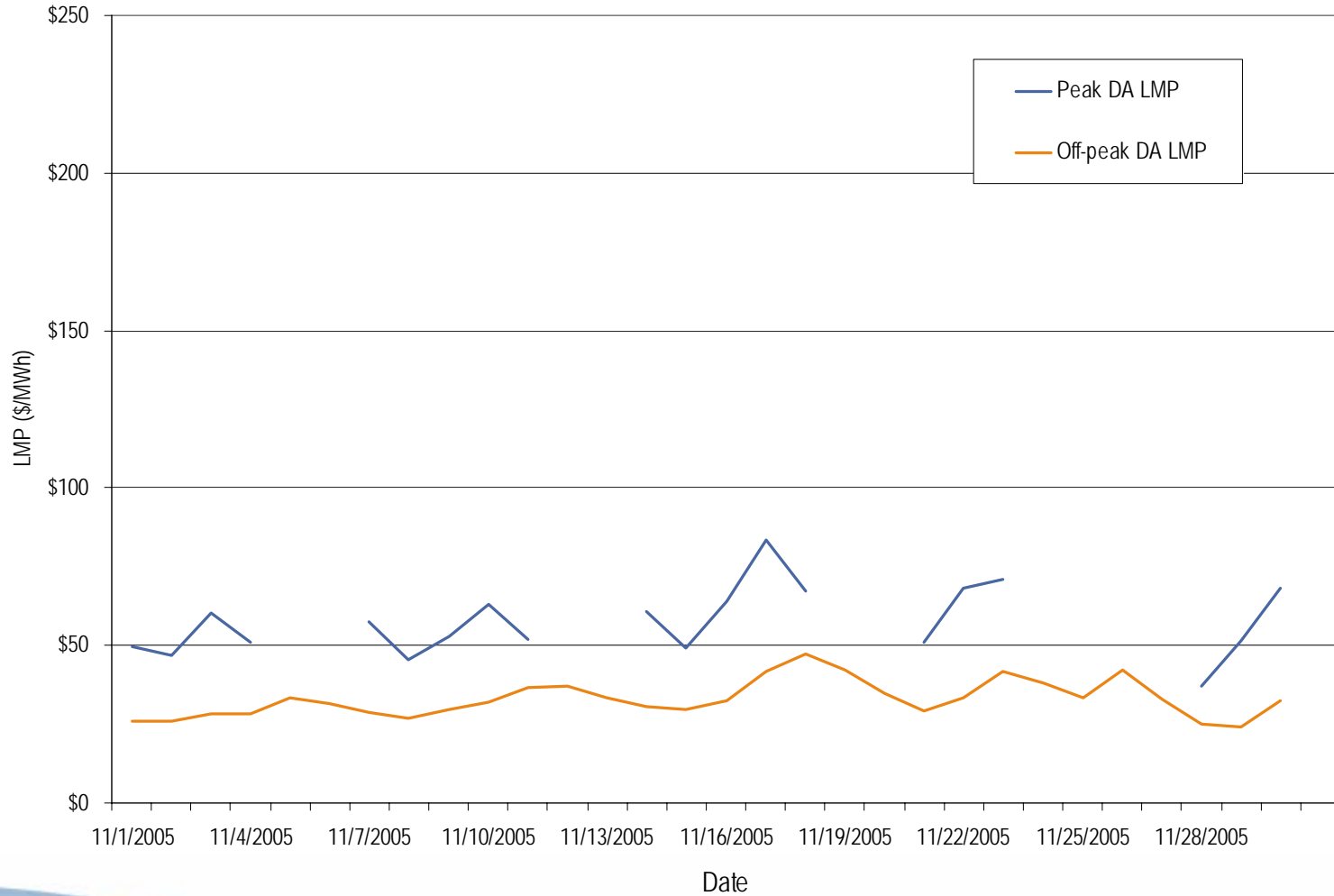
Average Hourly Difference of Day-Ahead and Real-Time LMPs November 2005



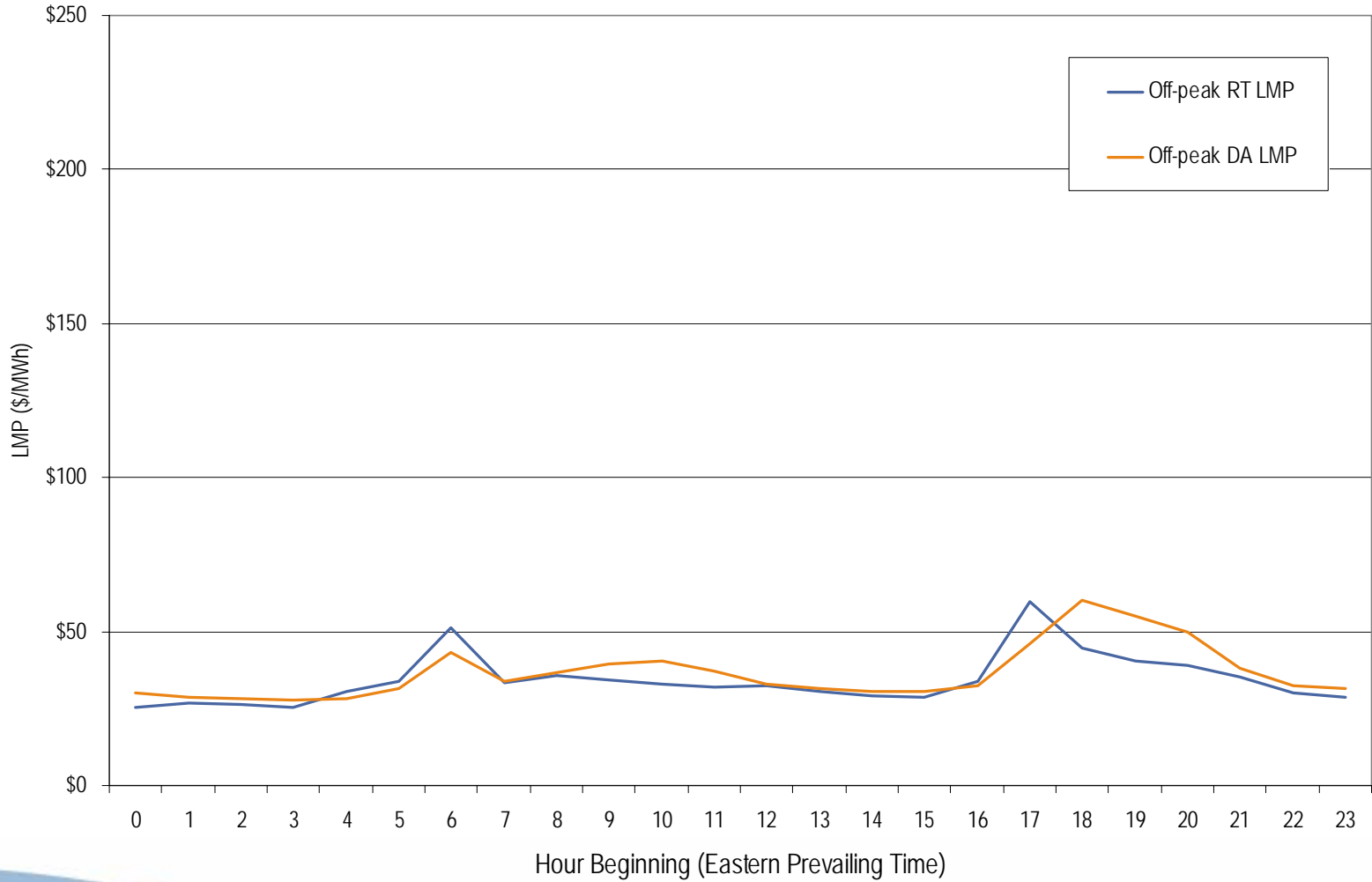
AEP real-time peak and off-peak average daily LMP November 2005



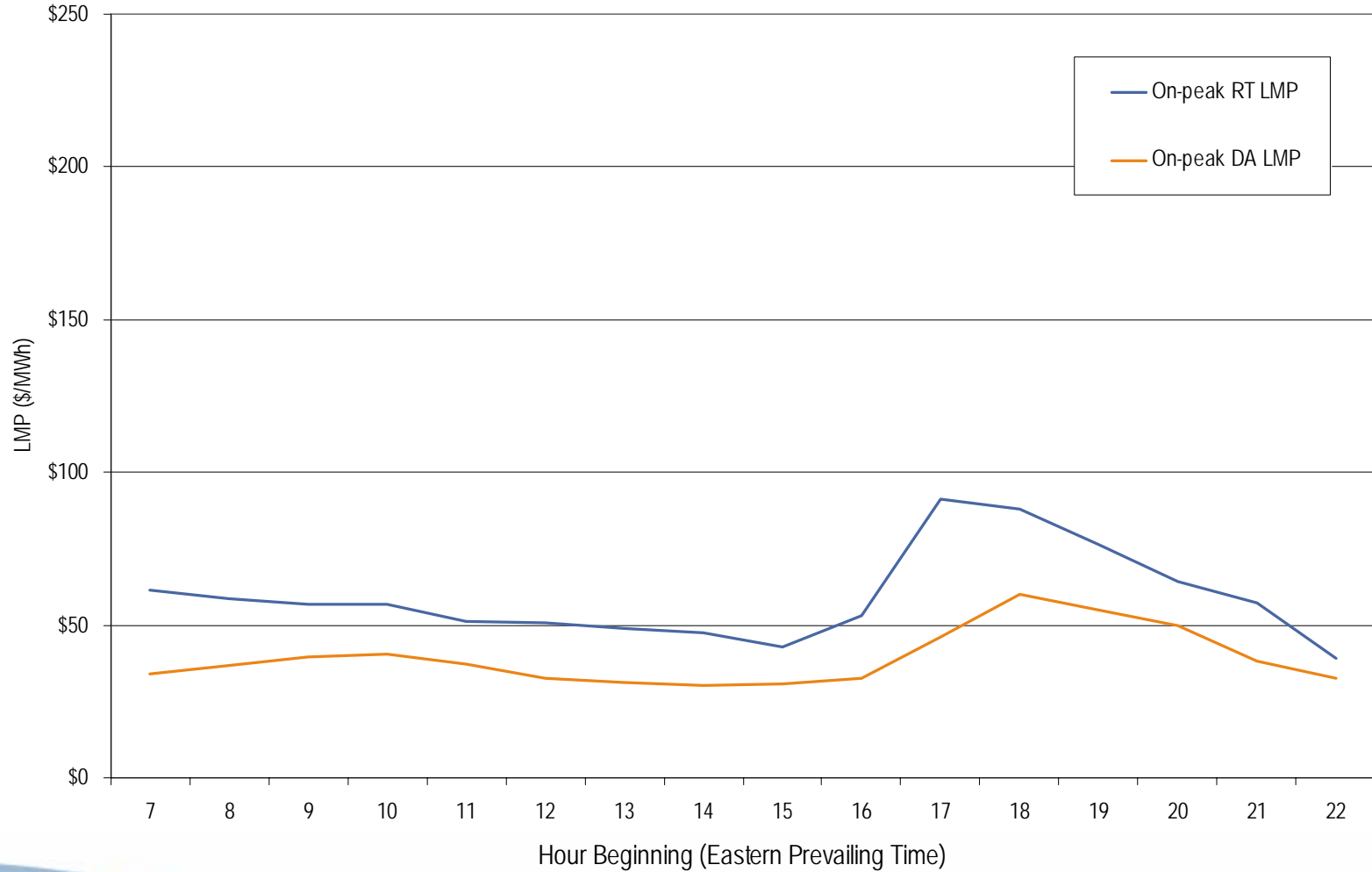
AEP day-ahead peak and off-peak average daily LMP November 2005



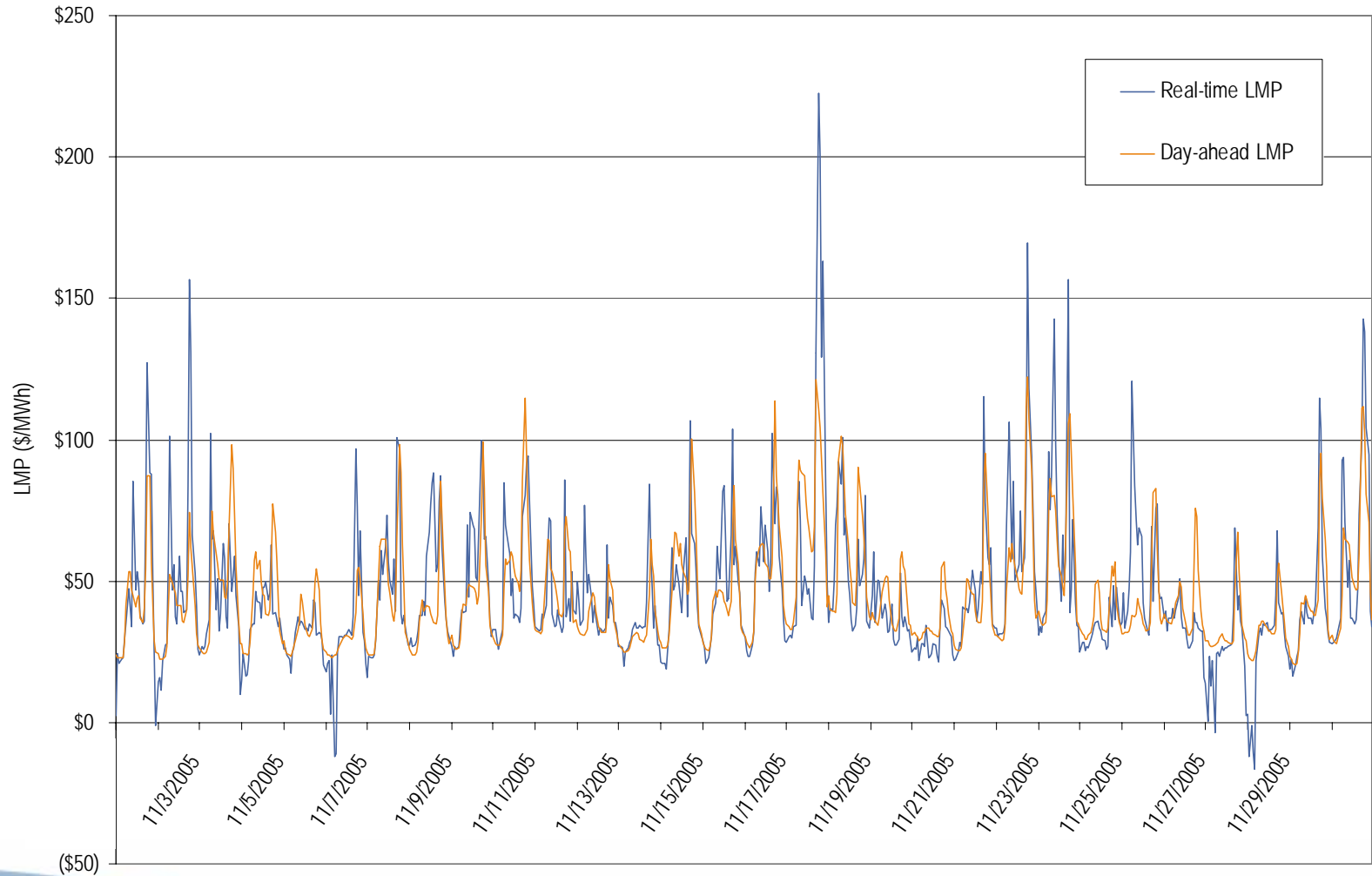
AEP real-time and day-ahead hourly average off-peak LMP November 2005



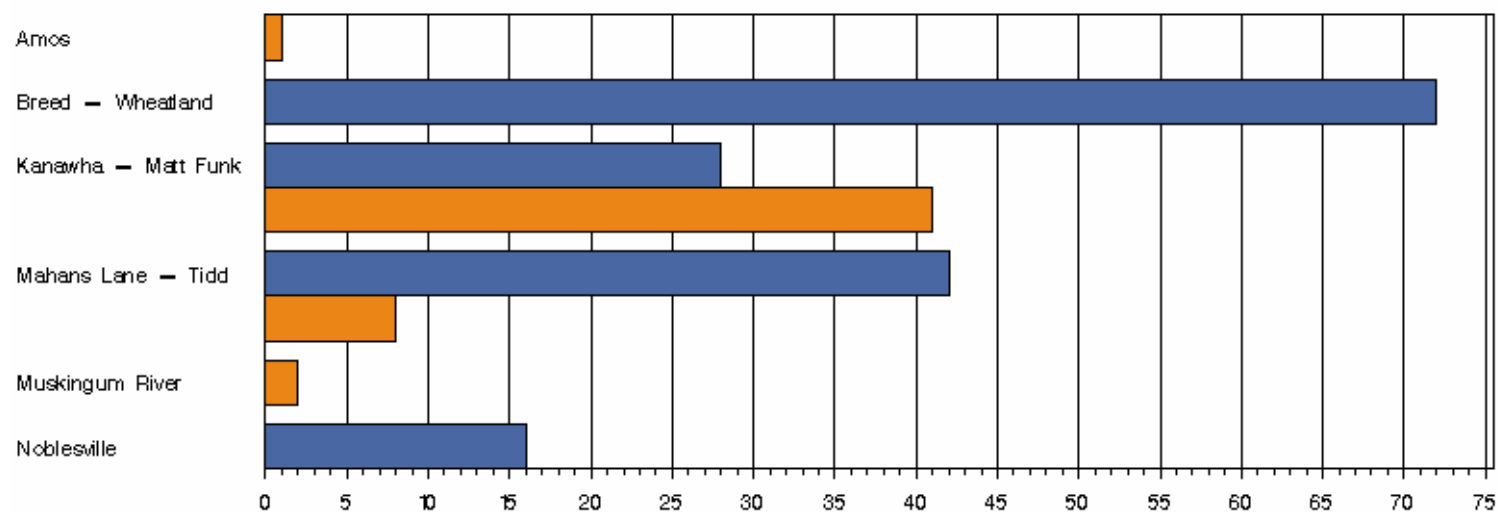
AEP real-time and day-ahead hourly average on-peak LMP November 2005



AEP real-time and day-ahead hourly zonal LMP November 2005



AEP Congestion Event Hours by Facility November 2005



Market ■ DA ■ RT

Offer Capping for November 2005:

- There were 52 event hours of Real-Time congestion in AEP in November.
 - There was 1 offer capped unit hour associated with this congestion.
- There were 158 event hours of Day-Ahead congestion in AEP in November.
 - There was no offer capping associated with this congestion.