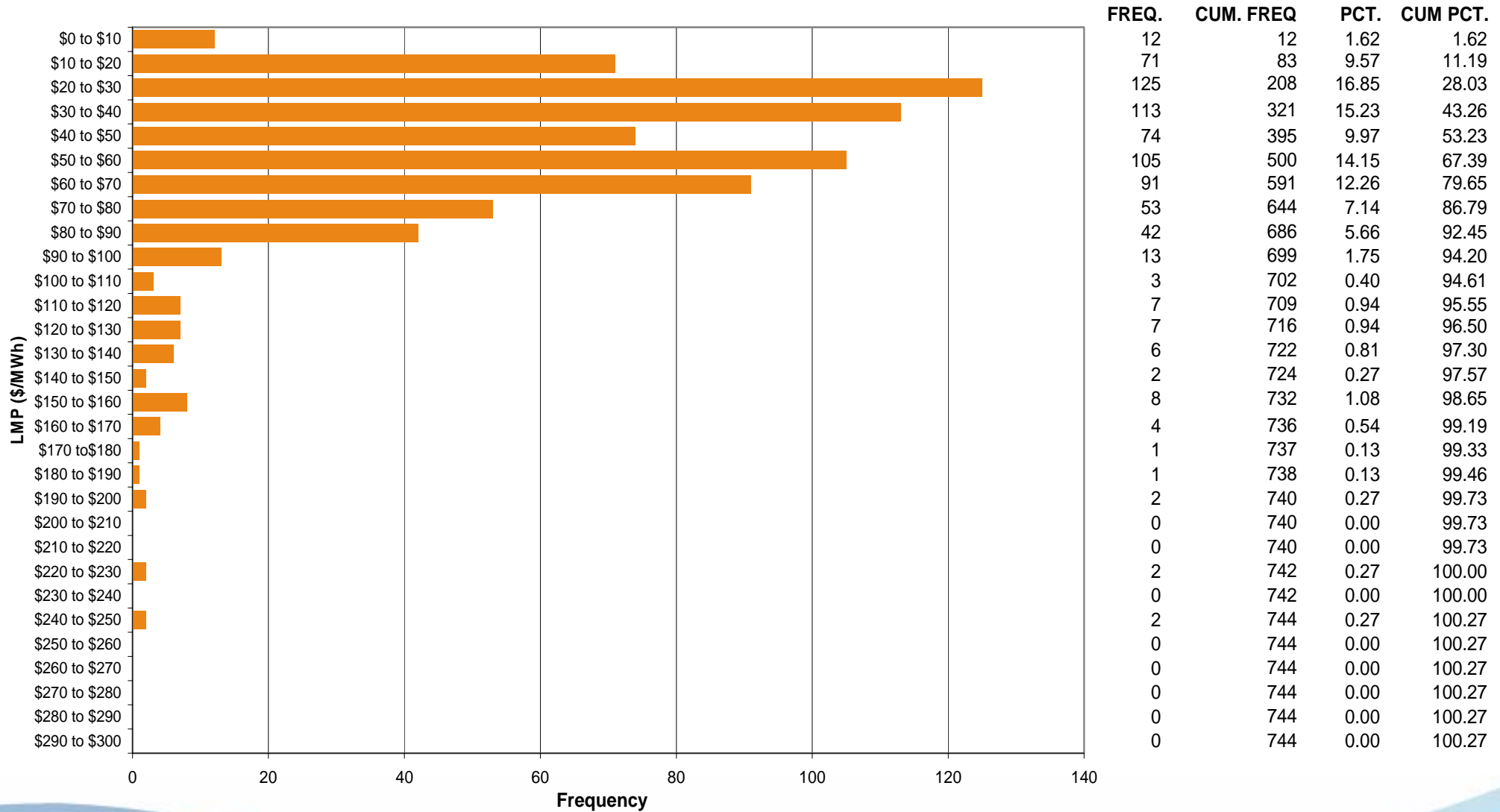




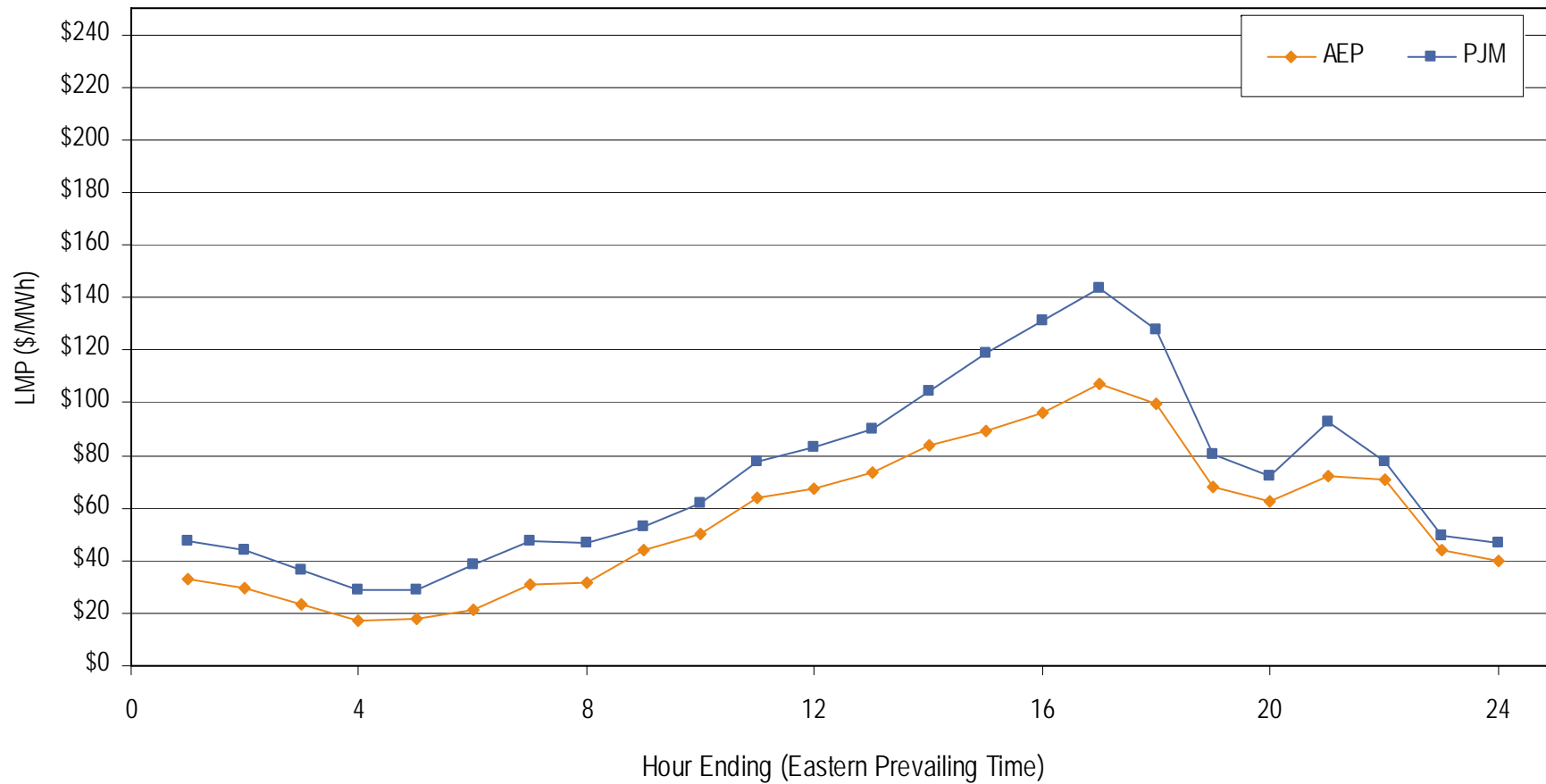
AEP Control Zone Market Monitoring Report for August 2006

Market Monitoring Unit
September 2006

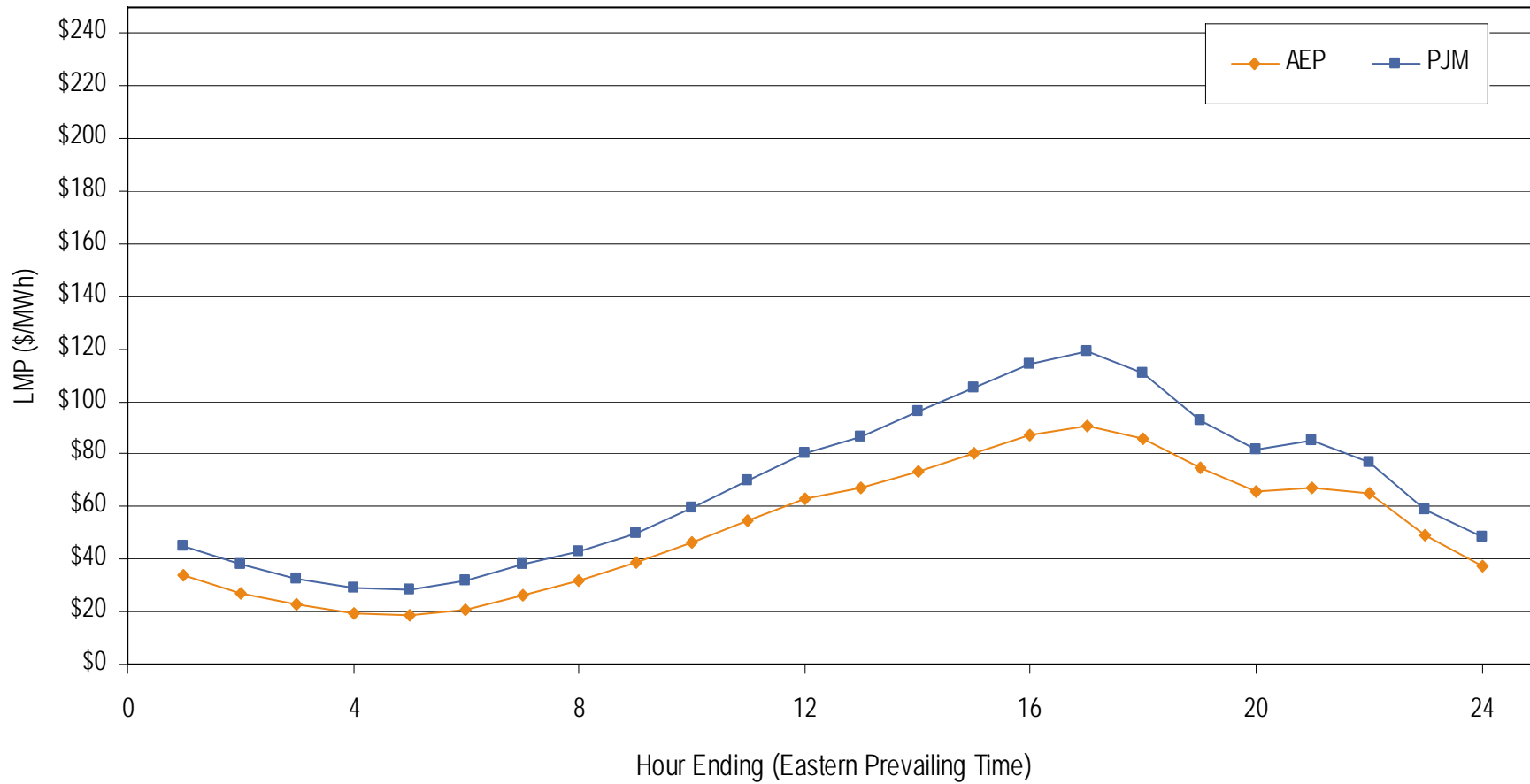
Frequency distribution by hours of AEP day-ahead LMP August 2006



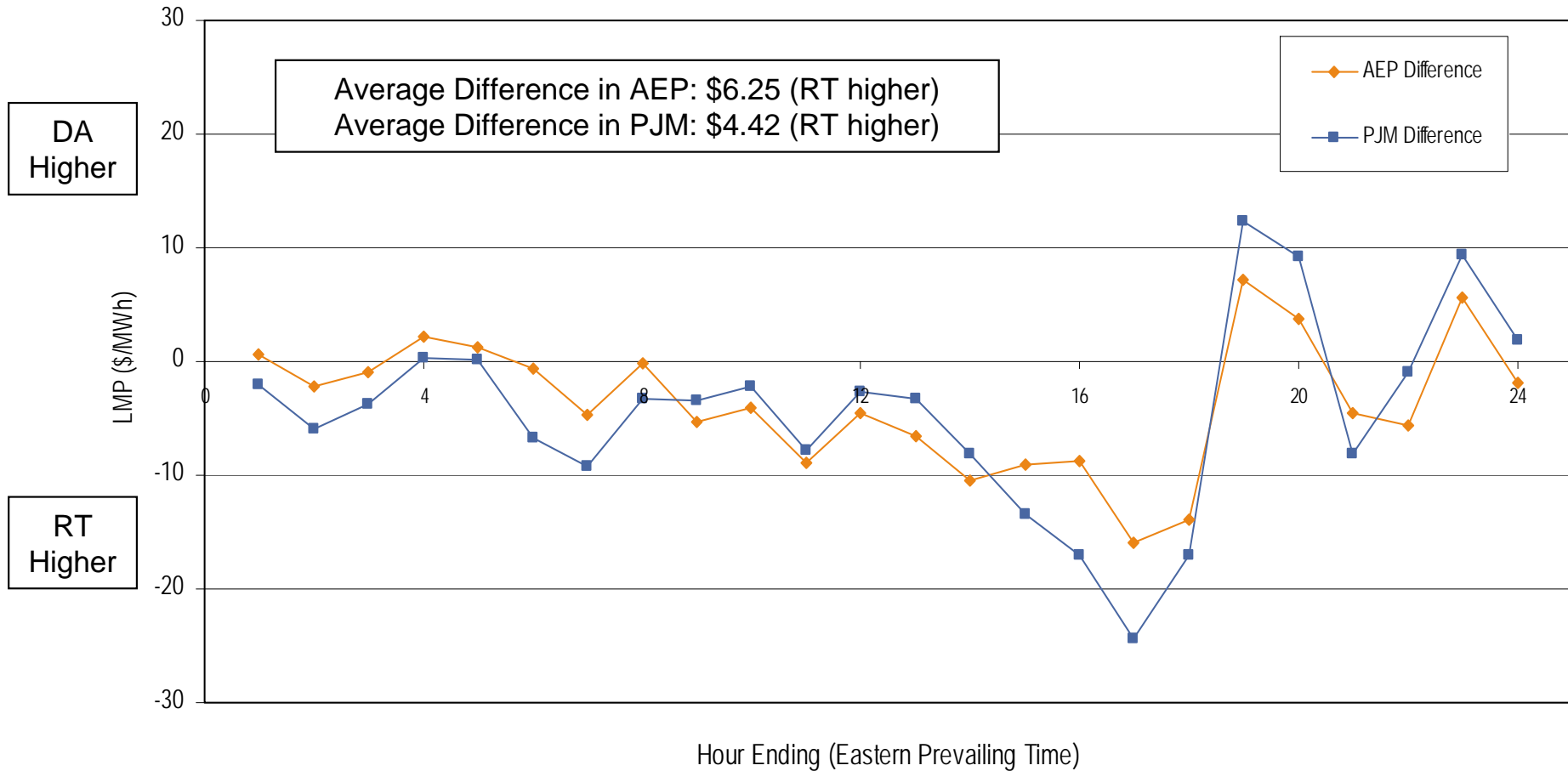
**Average Hourly Real-Time LMP
August 2006**



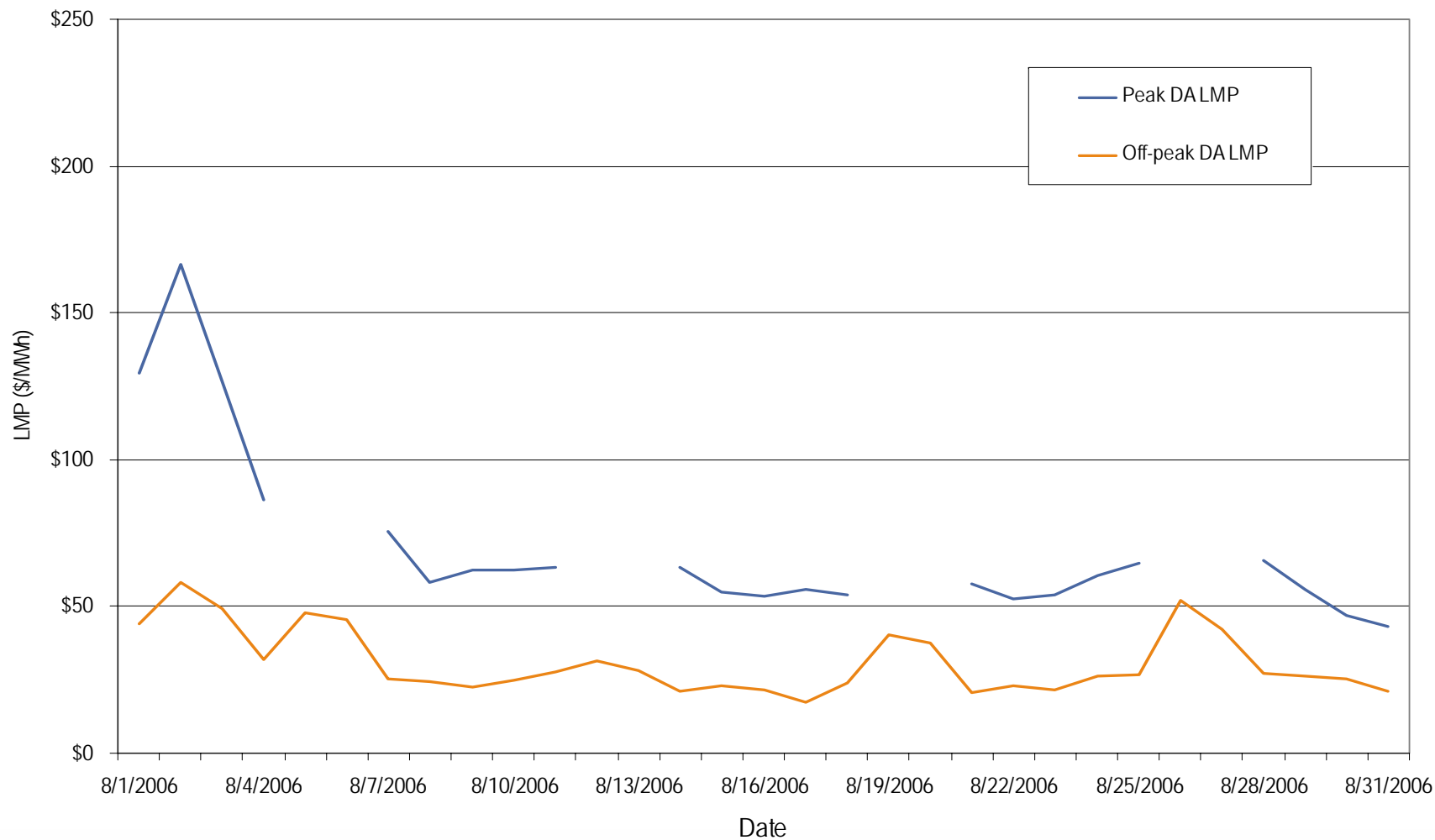
**Average Hourly Day-Ahead LMP
August 2006**



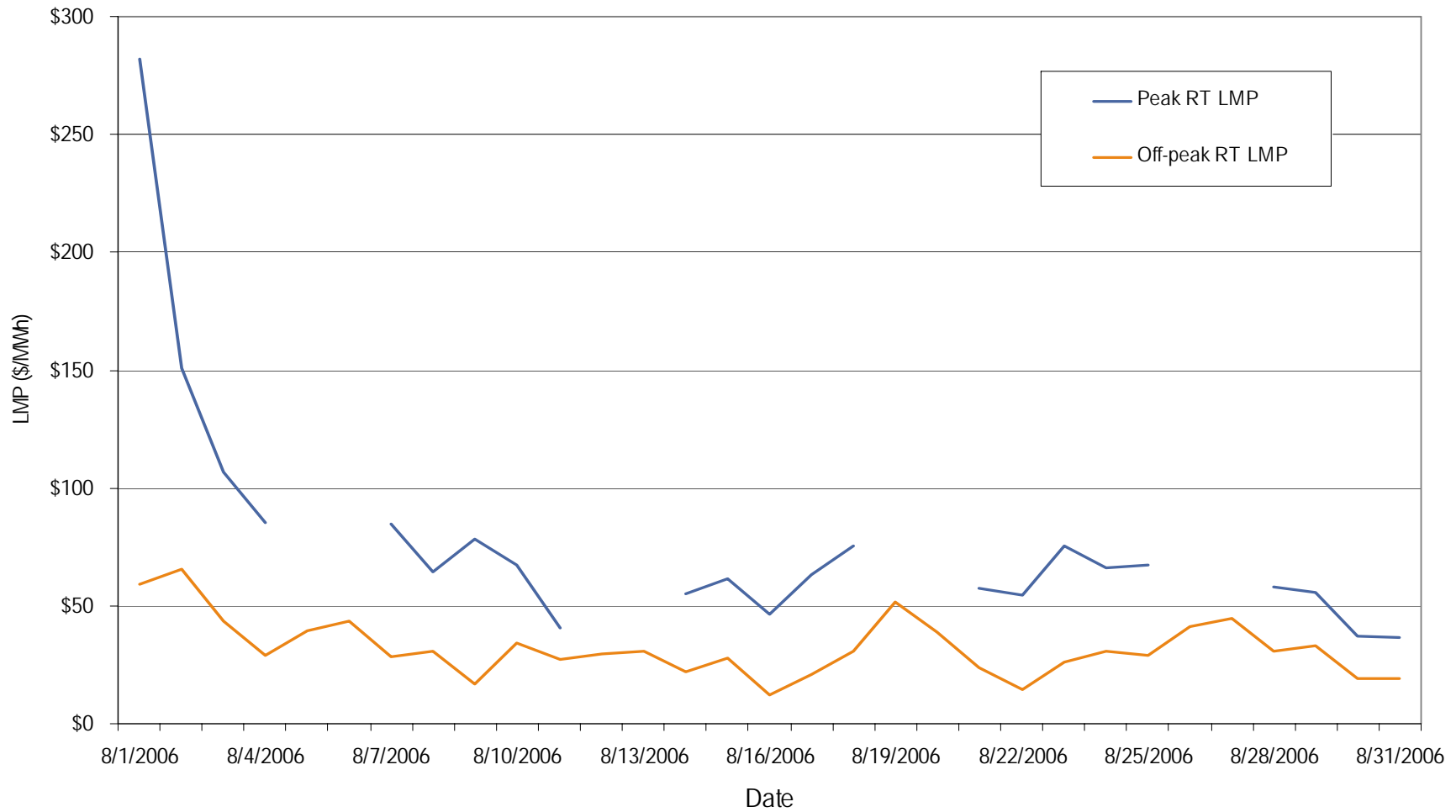
**Average Hourly Difference of Day-Ahead and Real-Time LMPs
August 2006**



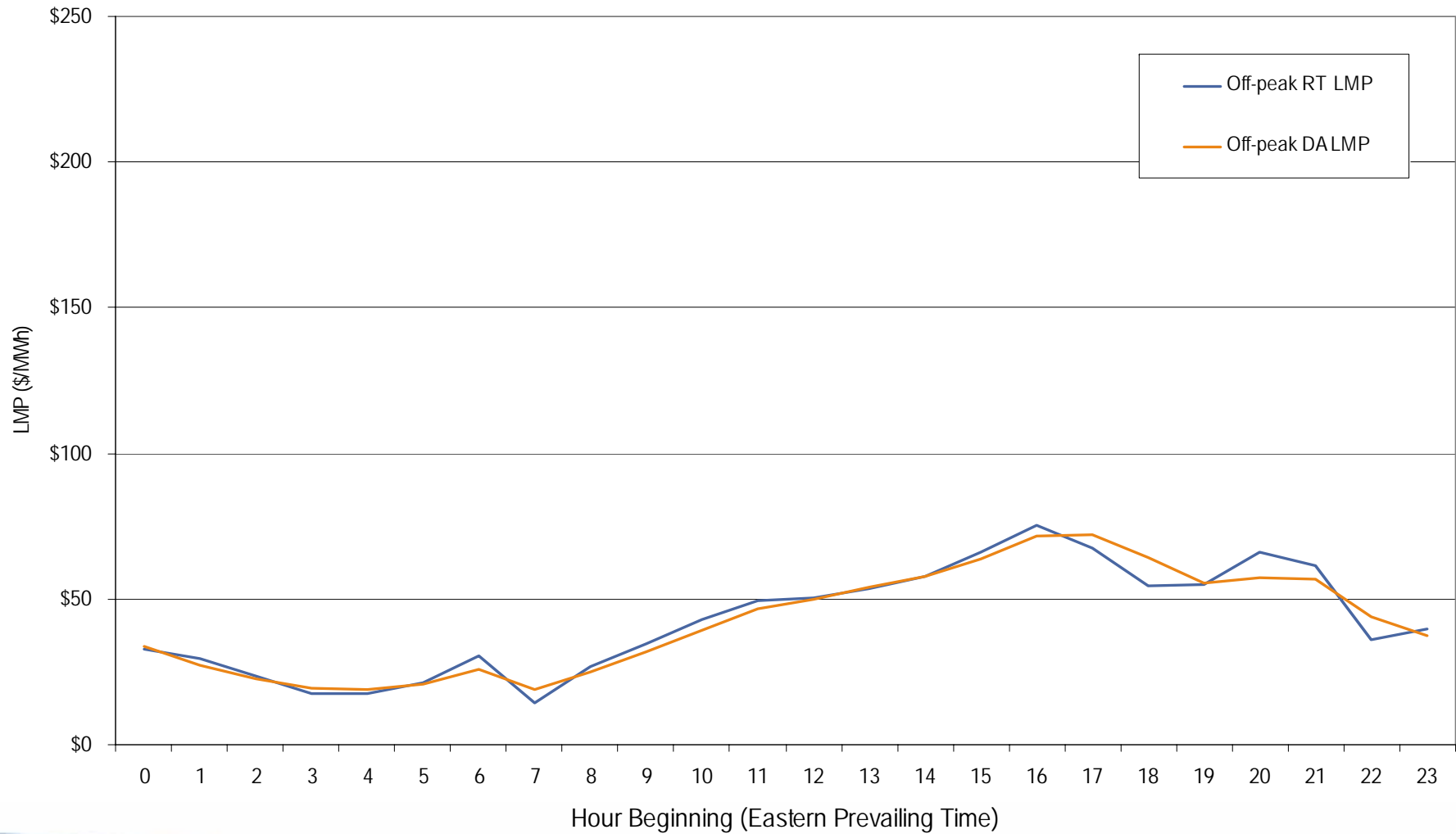
**AEP day-ahead peak and off-peak average daily LMP
August 2006**



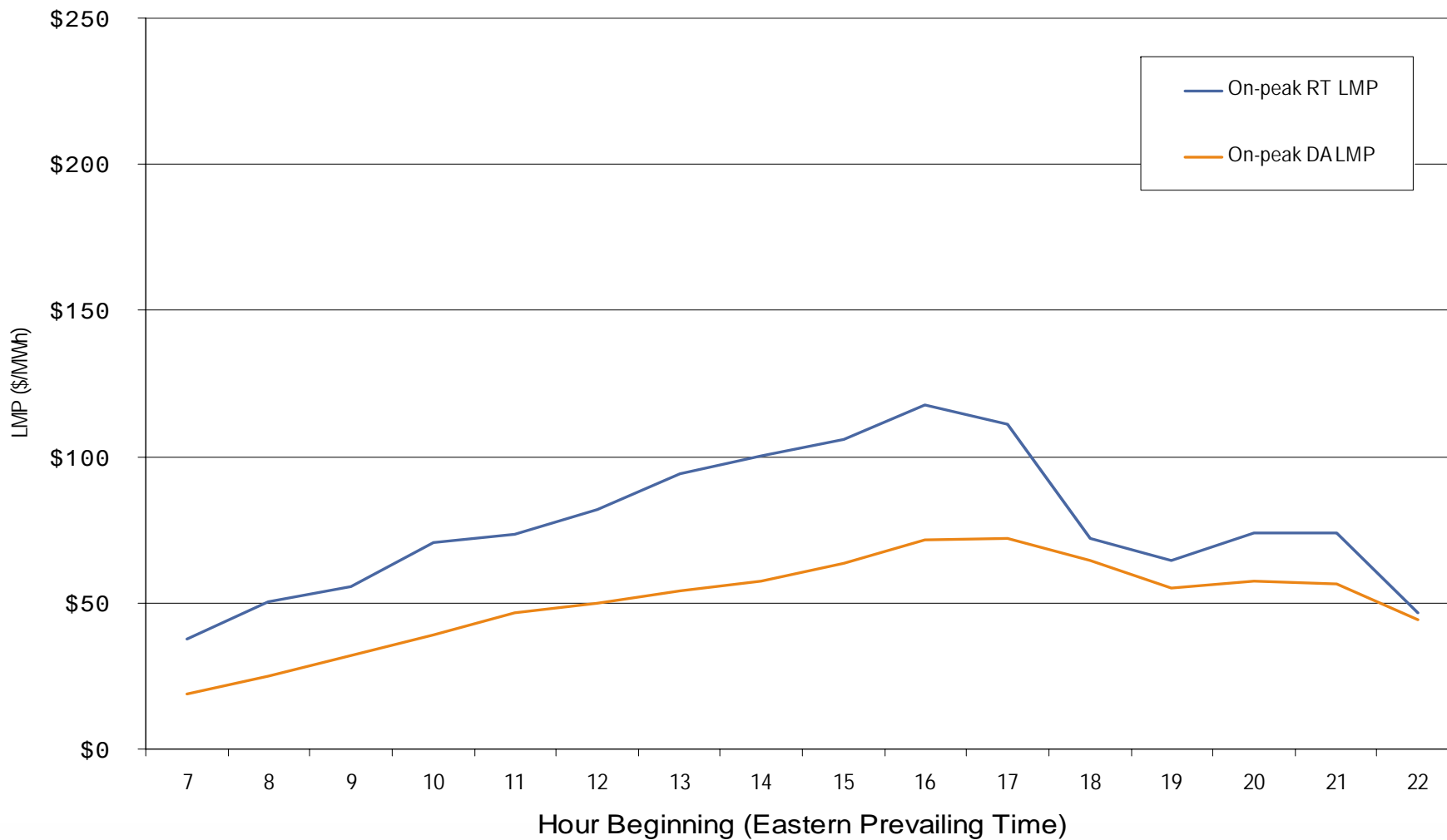
**AEP real-time peak and off-peak average daily LMP
August 2006**



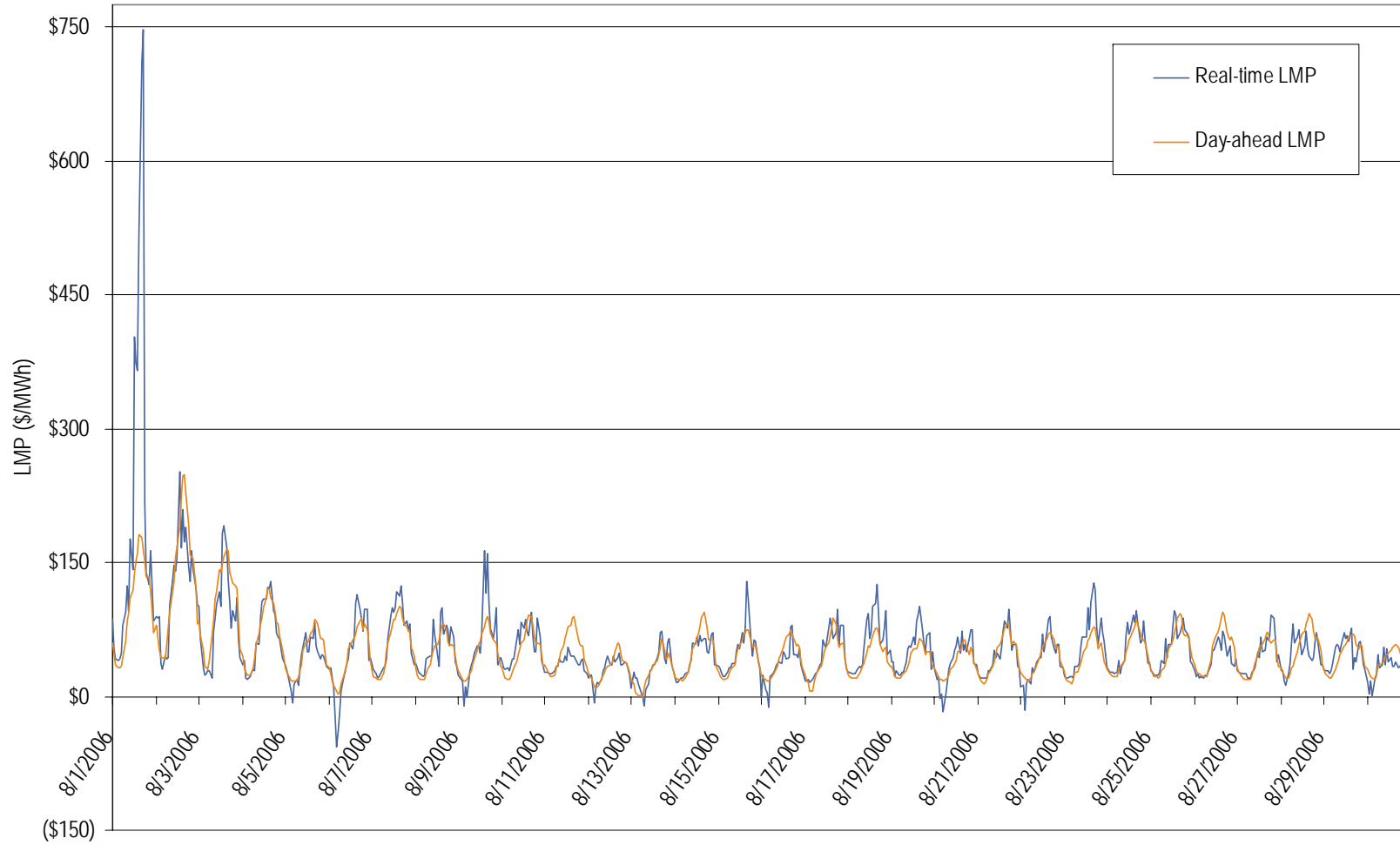
**AEP real-time and day-ahead hourly average off-peak LMP
August 2006**



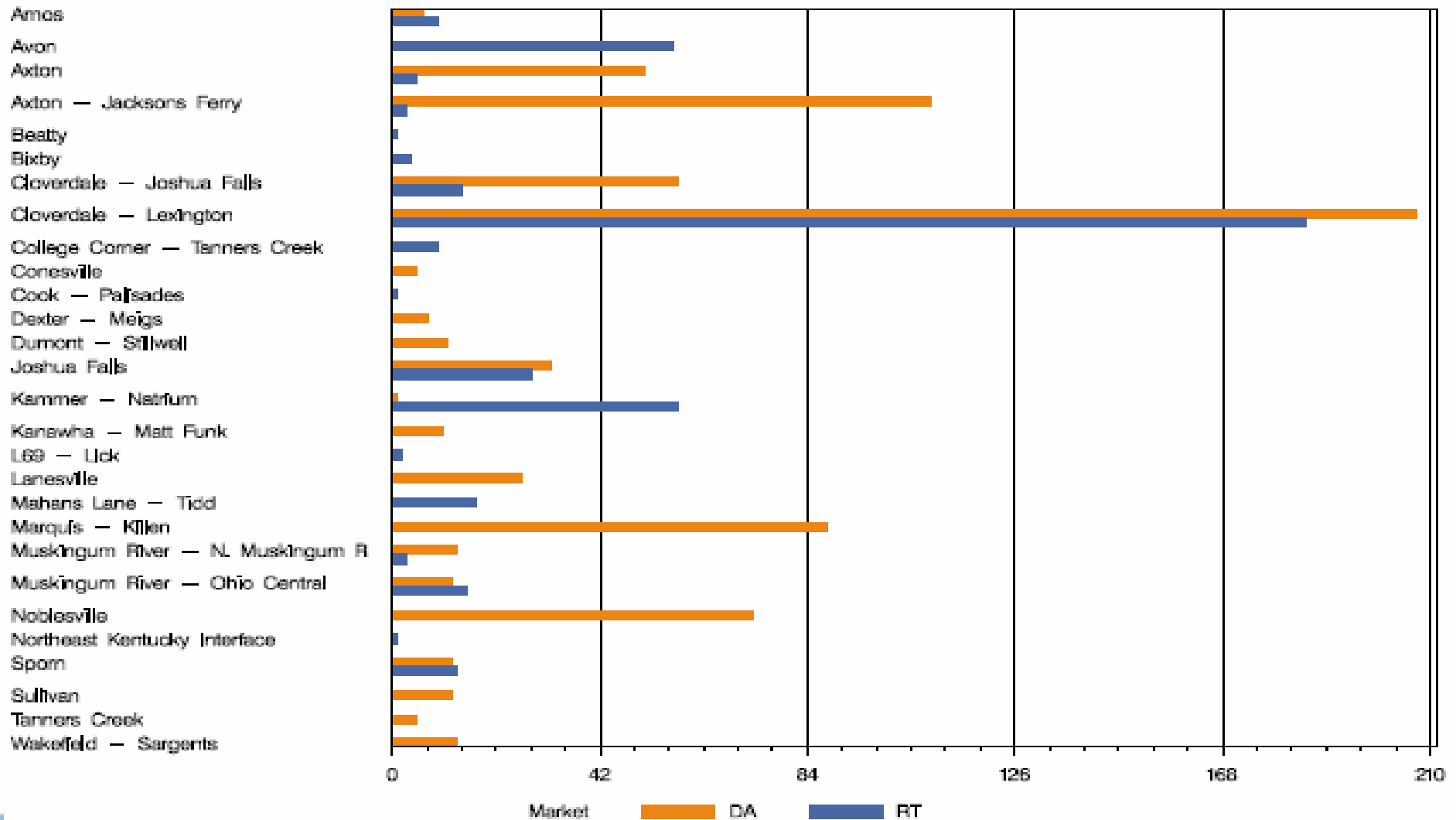
**AEP real-time and day-ahead hourly average on-peak LMP
August 2006**



**AEP real-time and day-ahead hourly zonal LMP
August 2006**



AEP Congestion Event Hours by Facility August 2006



Offer Capping for August 2006:

- There were 425 event hours of Real-Time congestion in AEP in August.
 - There were 32 offer capped unit hours in Real-Time.
- There were 751 event hours of Day-Ahead congestion in AEP in August.
 - There was no offer capping in Day-Ahead.