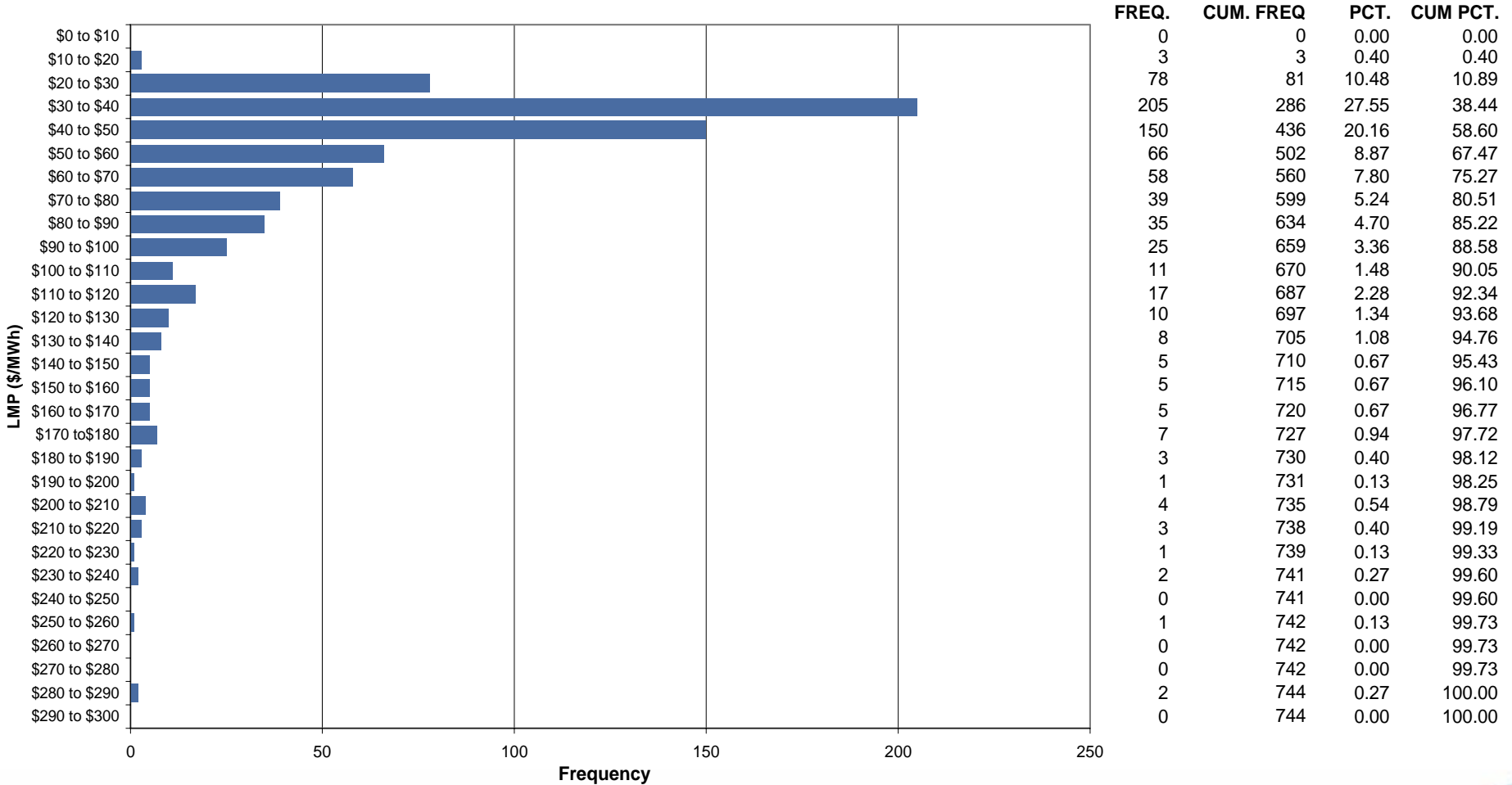




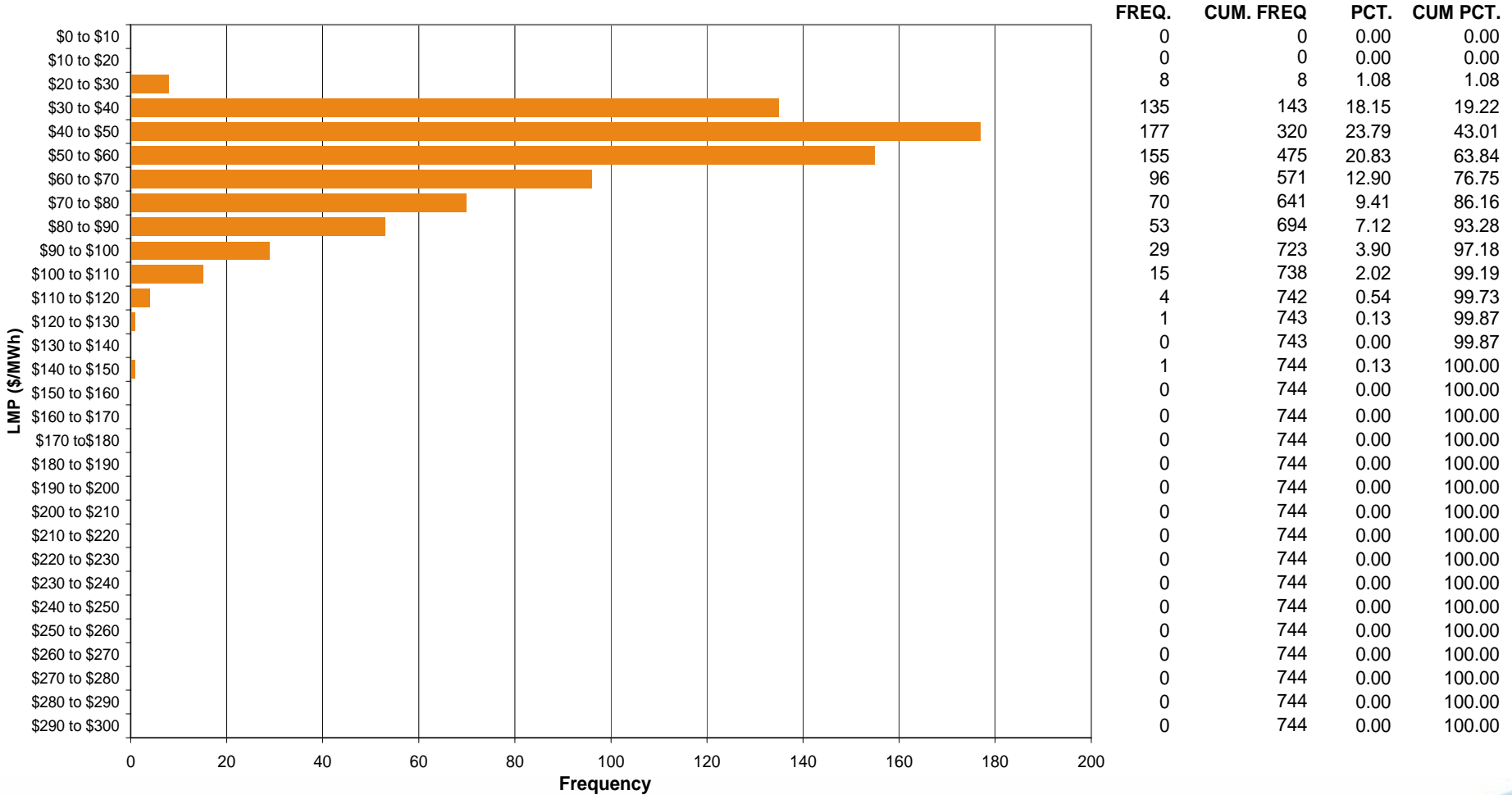
Dominion Control Zone Market Monitoring Report for January 2006

Market Monitoring Unit
February 2006

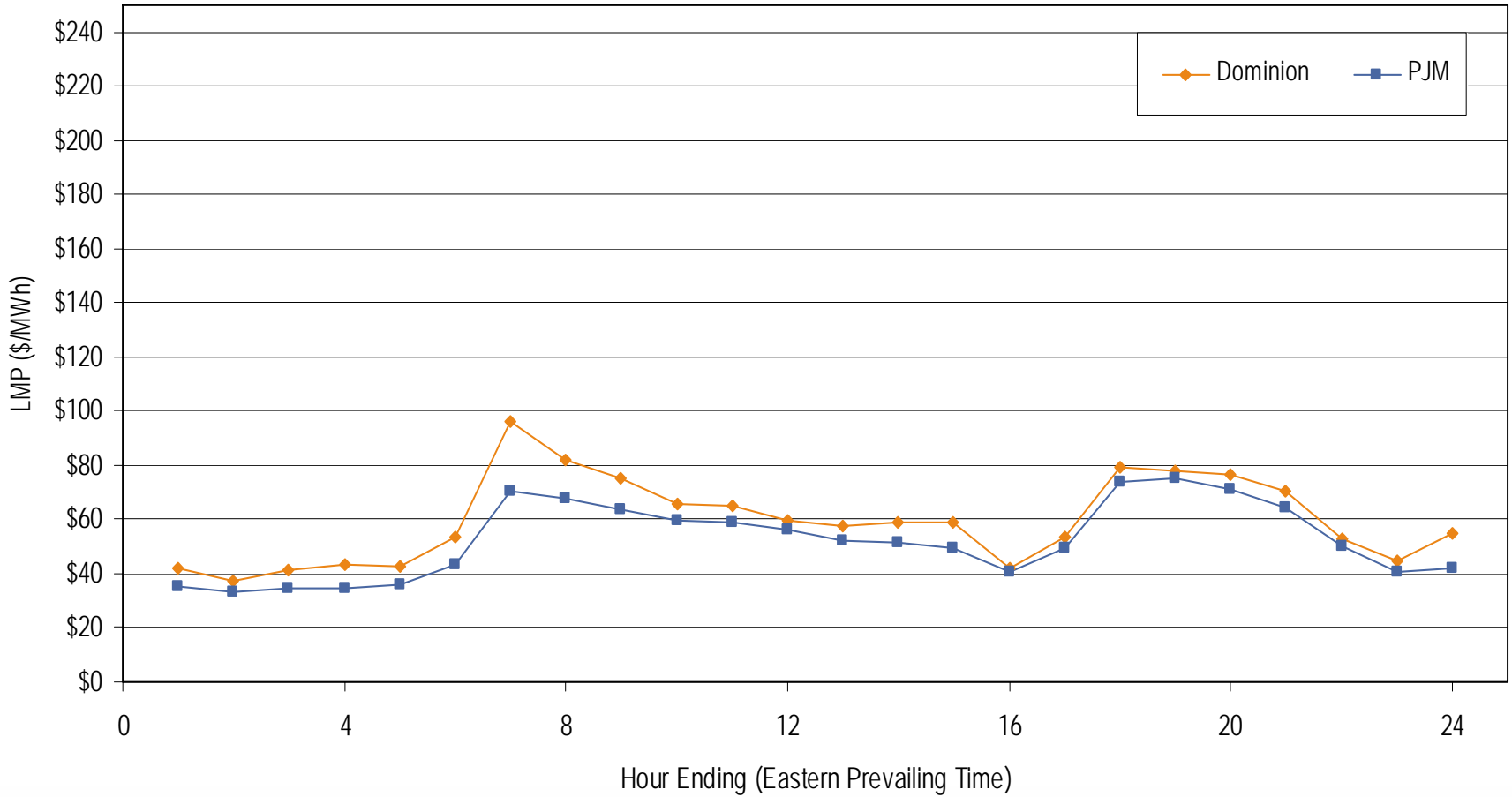
Frequency Distribution by Hours of Dominion Real-time LMP January 2006



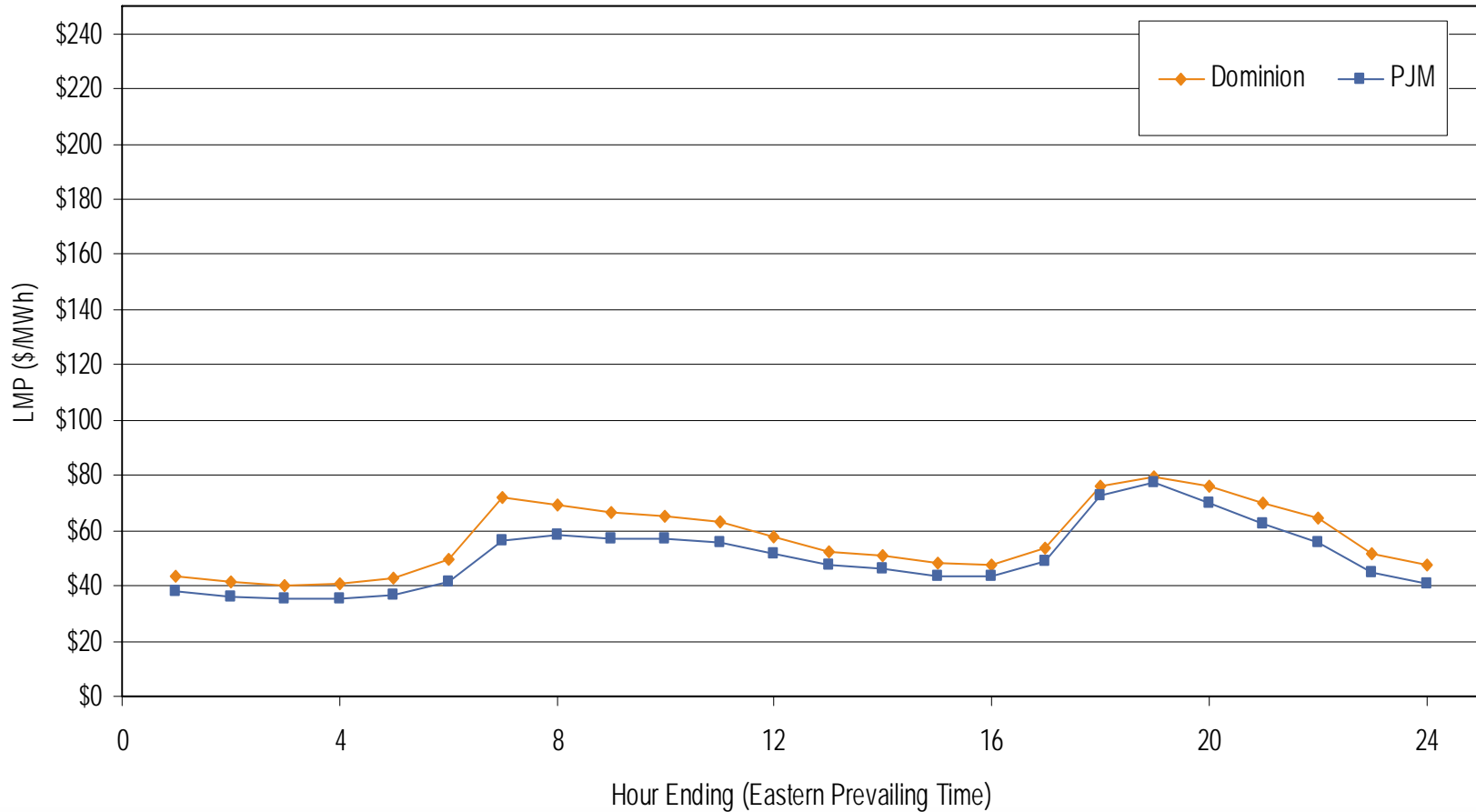
Frequency Distribution by Hours of Dominion Day-ahead LMP January 2006



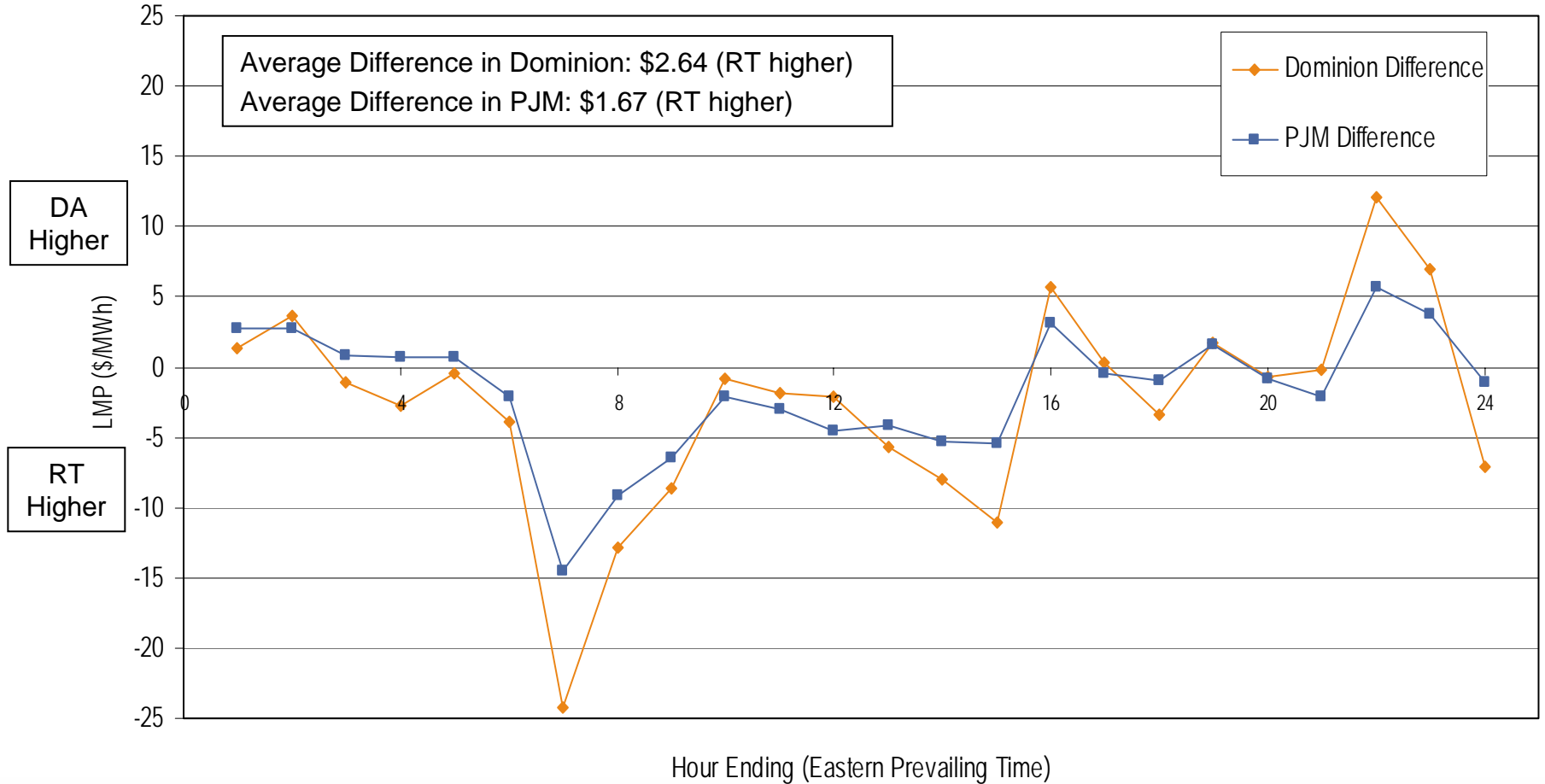
Average Hourly Real-Time LMP January 2006



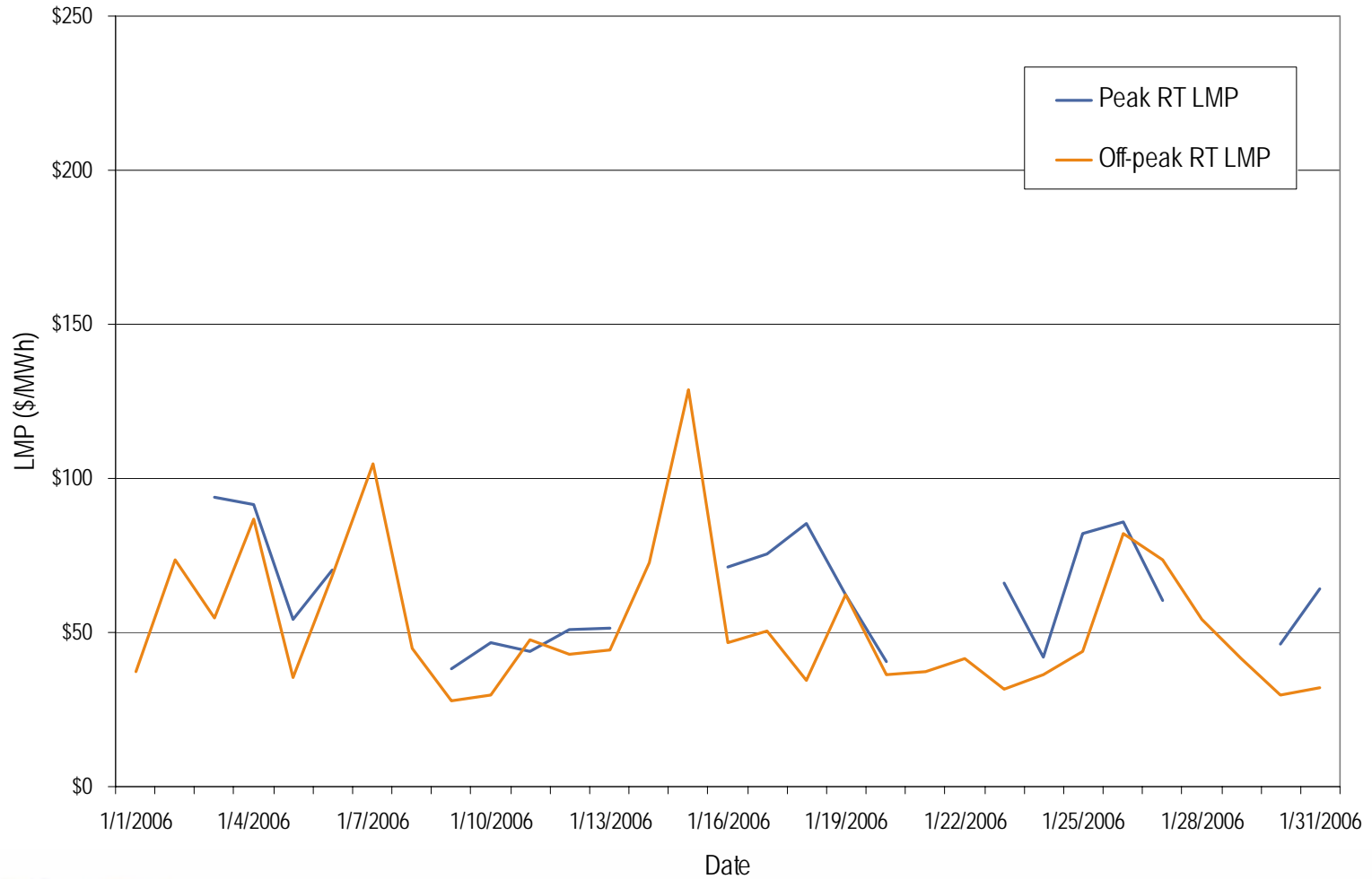
Average Hourly Day-Ahead LMP January 2006



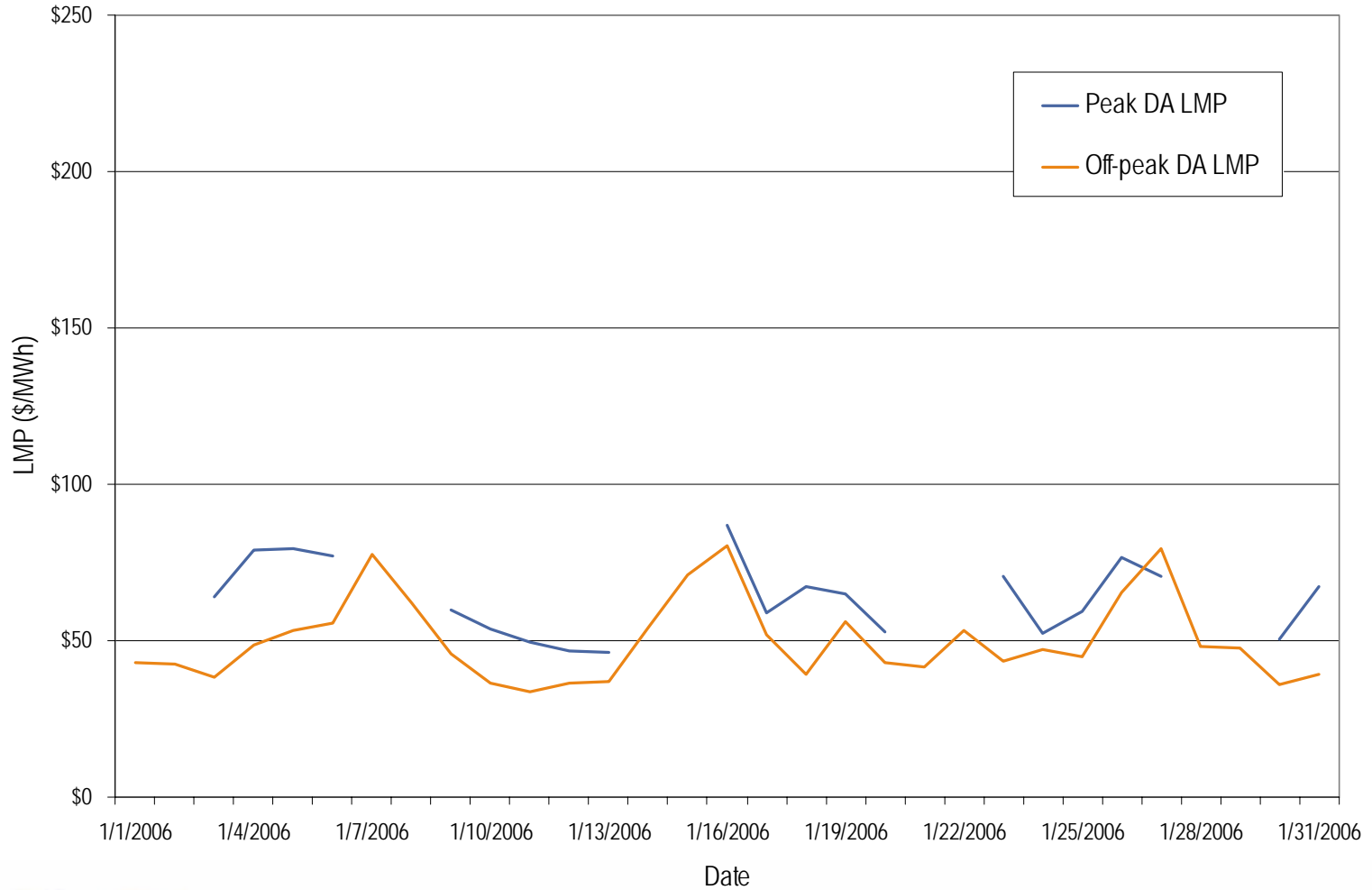
Average Hourly Difference of Day-Ahead and Real-Time LMPs January 2006



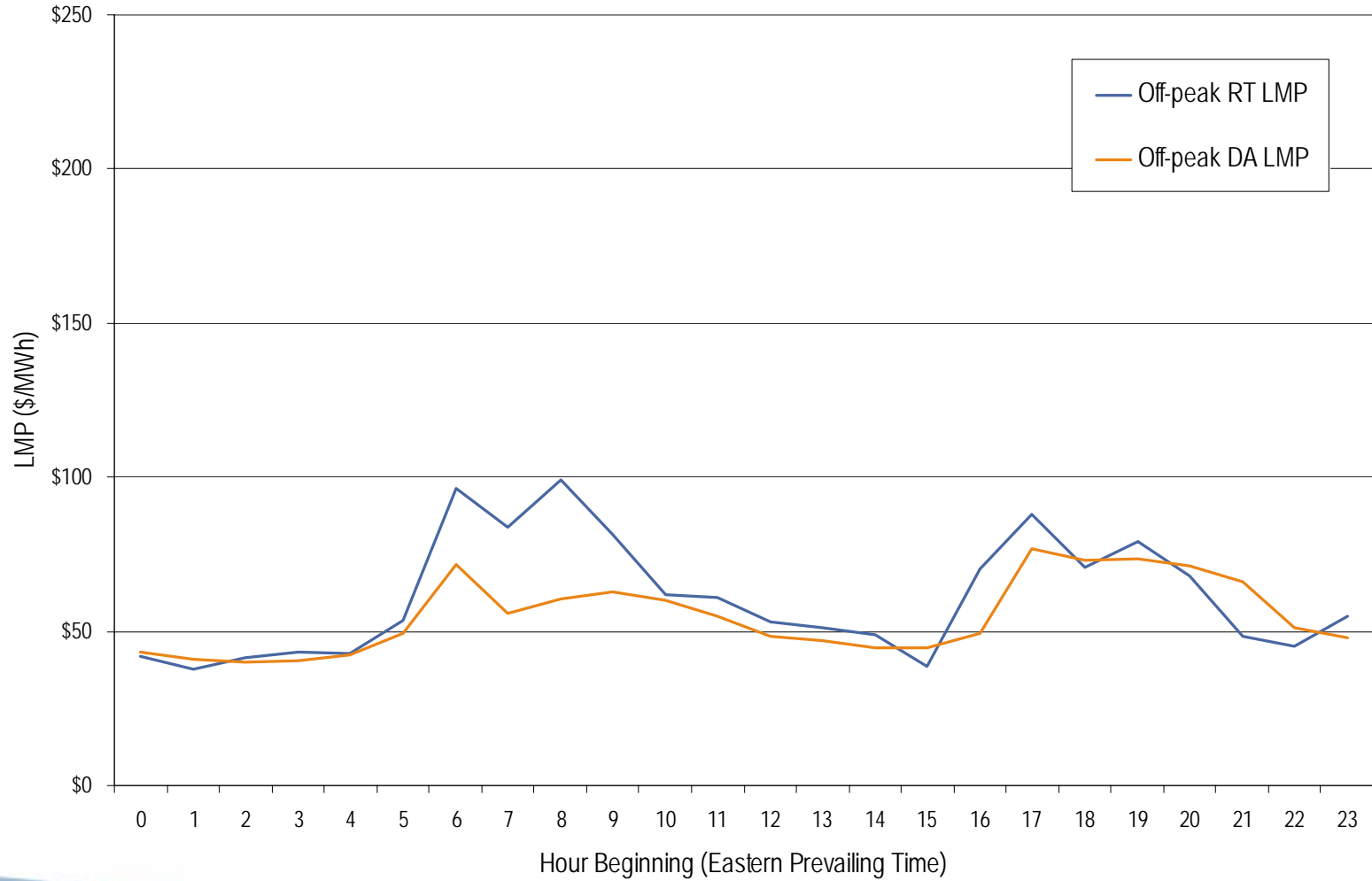
Dominion real-time peak and off-peak average daily LMP January 2006



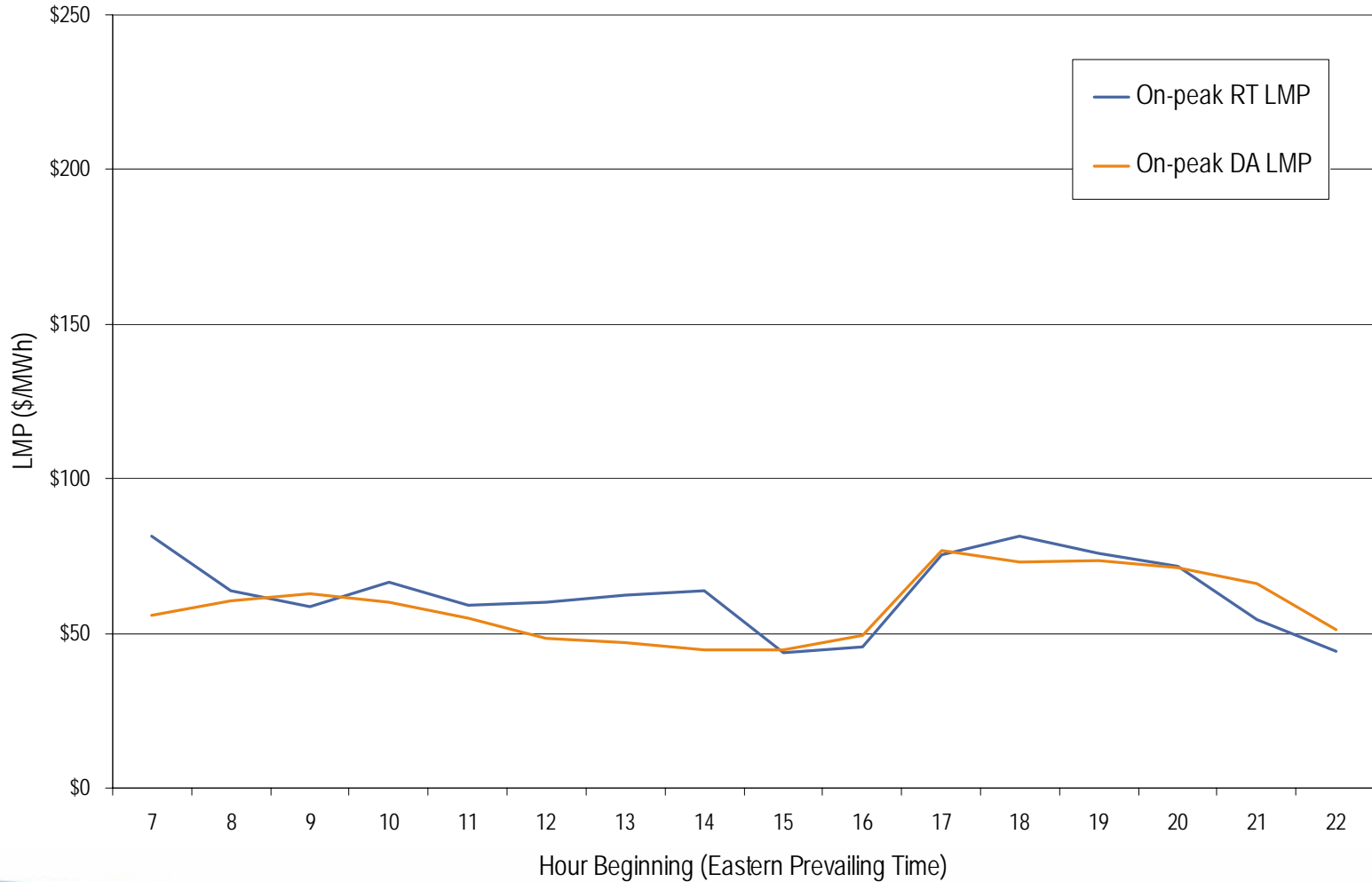
Dominion day-ahead peak and off-peak average daily LMP January 2006



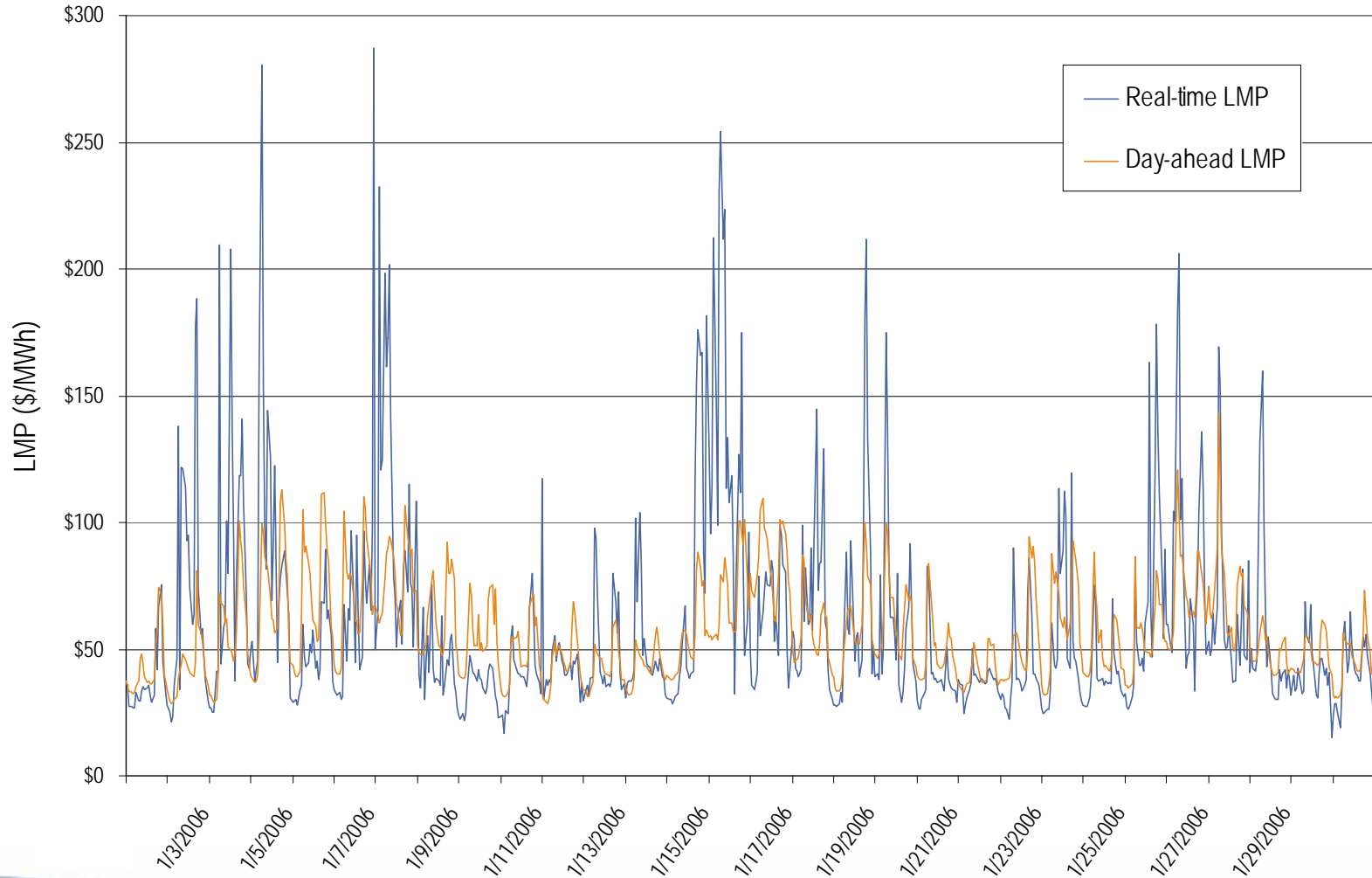
Dominion real-time and day-ahead hourly average off-peak LMP January 2006



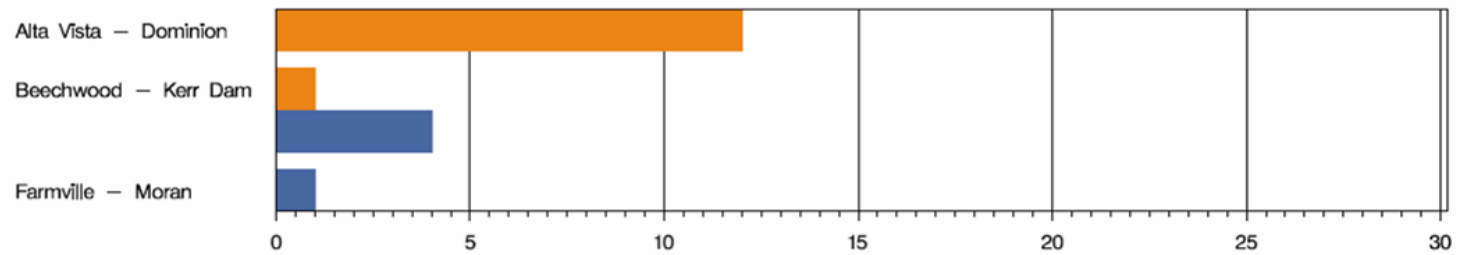
Dominion real-time and day-ahead hourly average on-peak LMP January 2006



Dominion real-time and day-ahead hourly zonal LMP January 2006



DOM Congestion Event Hours by Facility January 2006



Market ■ DA ■ RT

Offer Capping for January 2006:

- There were 5 event hours of Real-Time congestion in Dominion in January.
 - There was no offer capping associated with this congestion.
- There were 13 event hours of Day-Ahead congestion in Dominion in January.
 - There was no offer capping associated with this congestion.