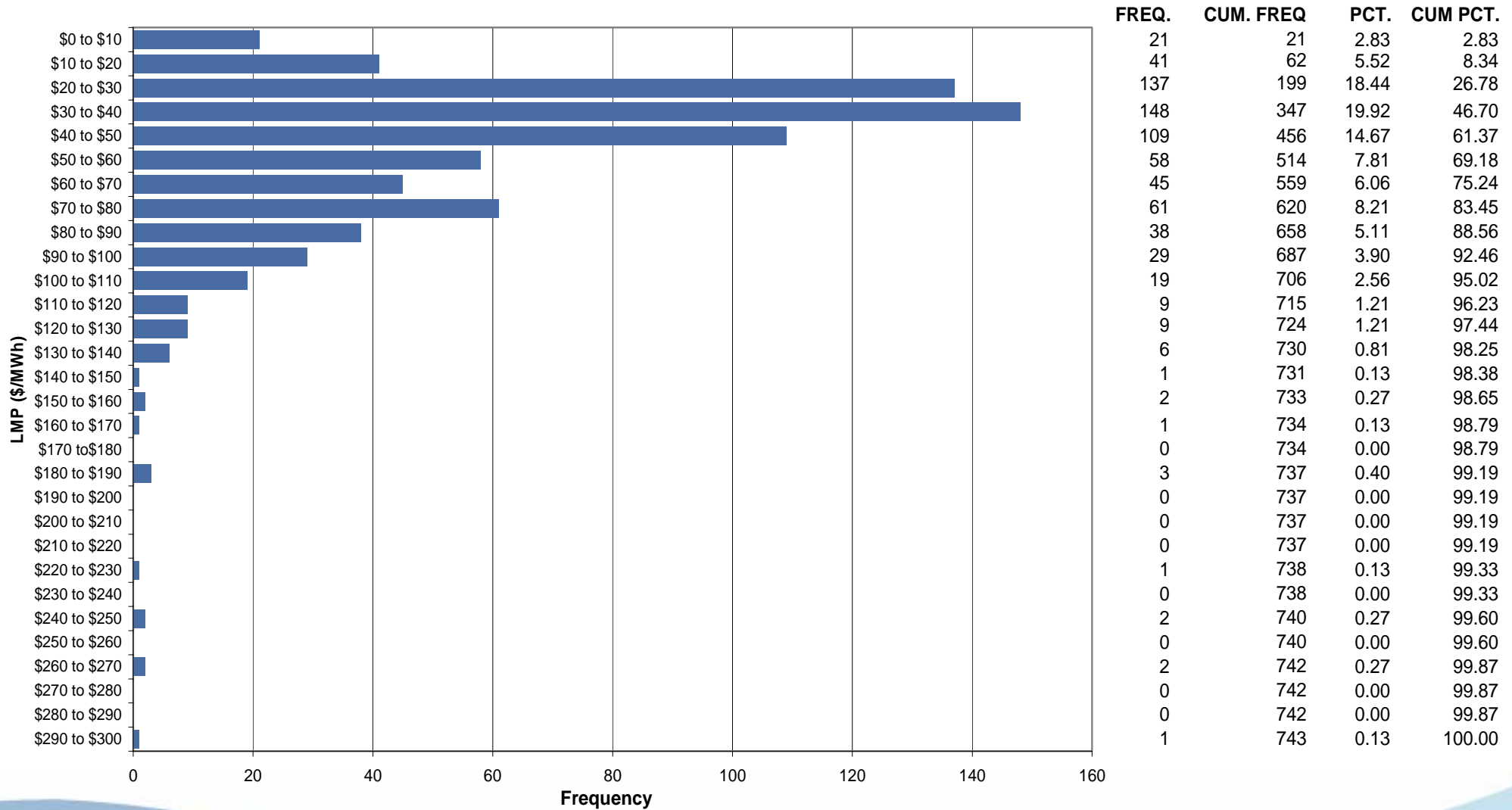




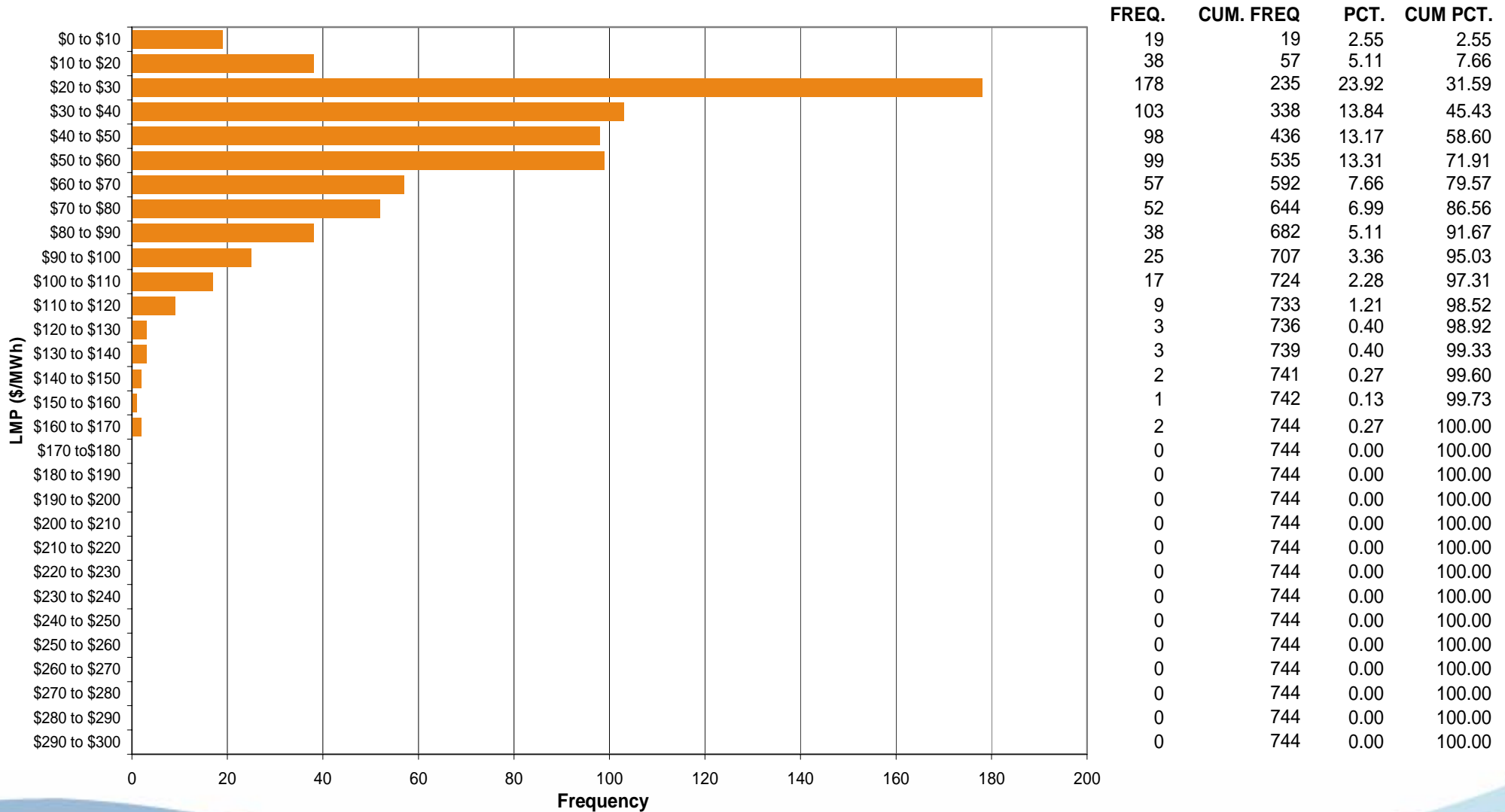
# ComEd Control Zone Market Monitoring Report for July 2006

Market Monitoring Unit  
August 2006

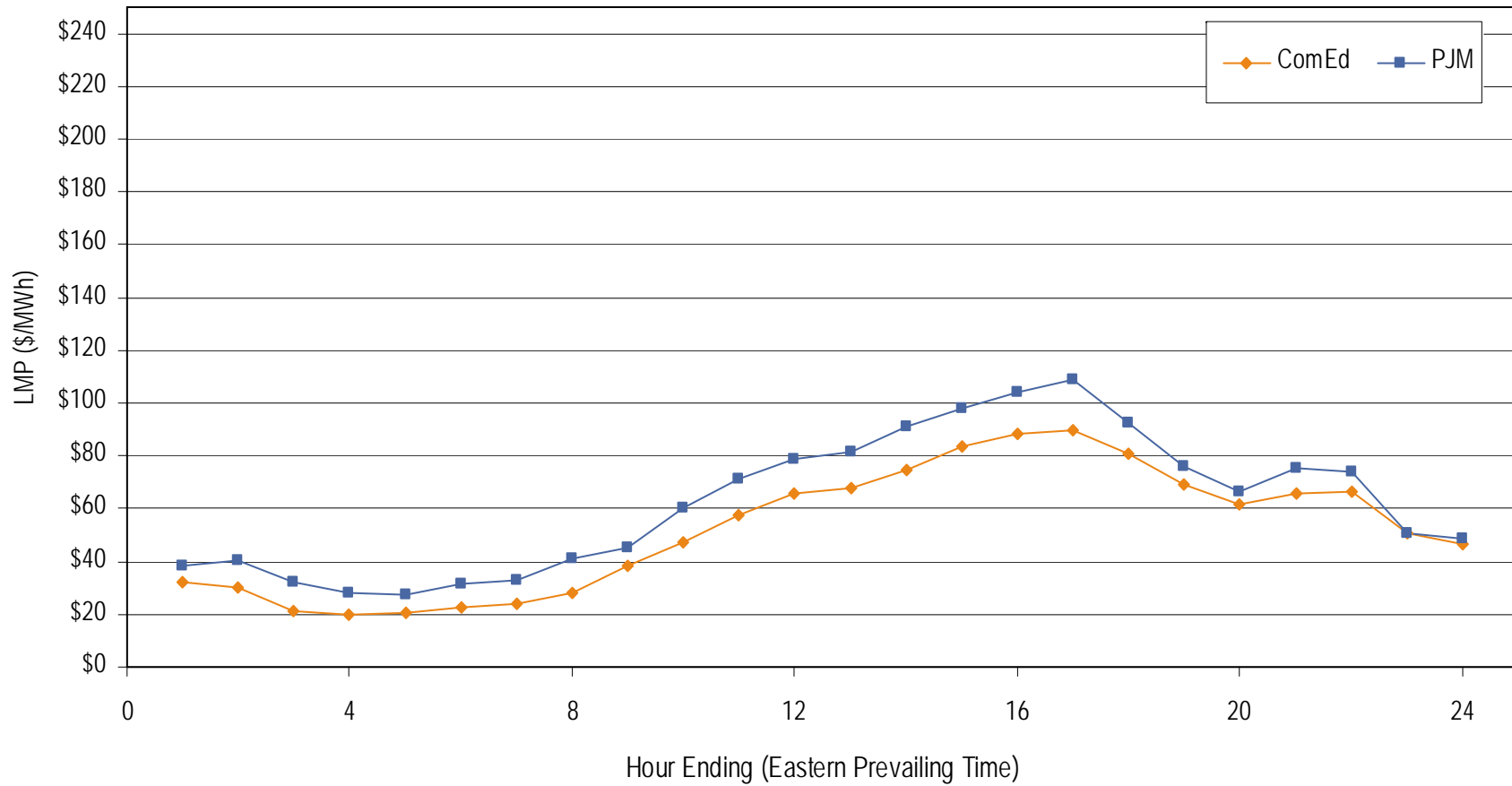
### Frequency distribution by hours of ComEd real-time LMP July 2006



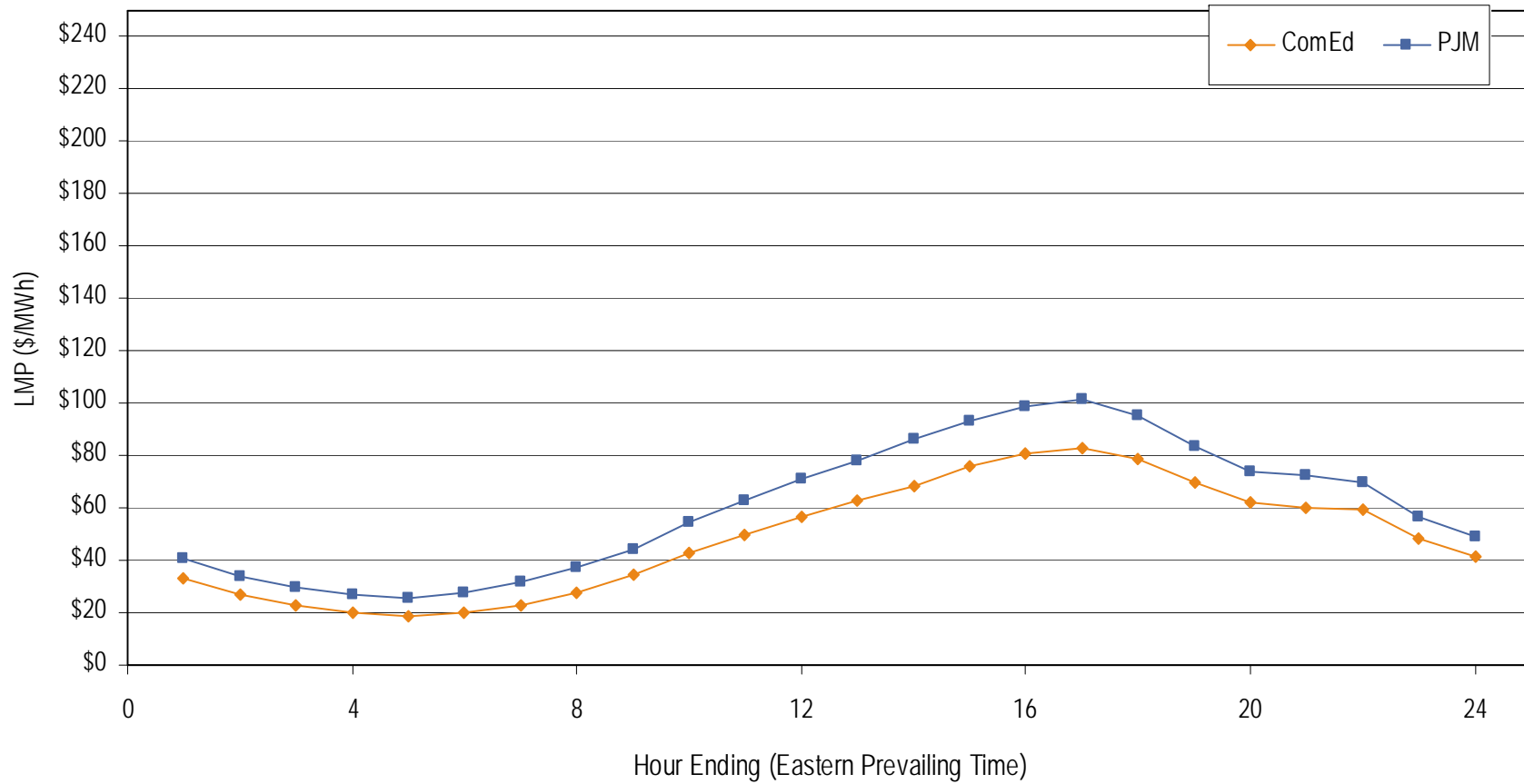
### Frequency distribution by hours of ComEd day-ahead LMP July 2006



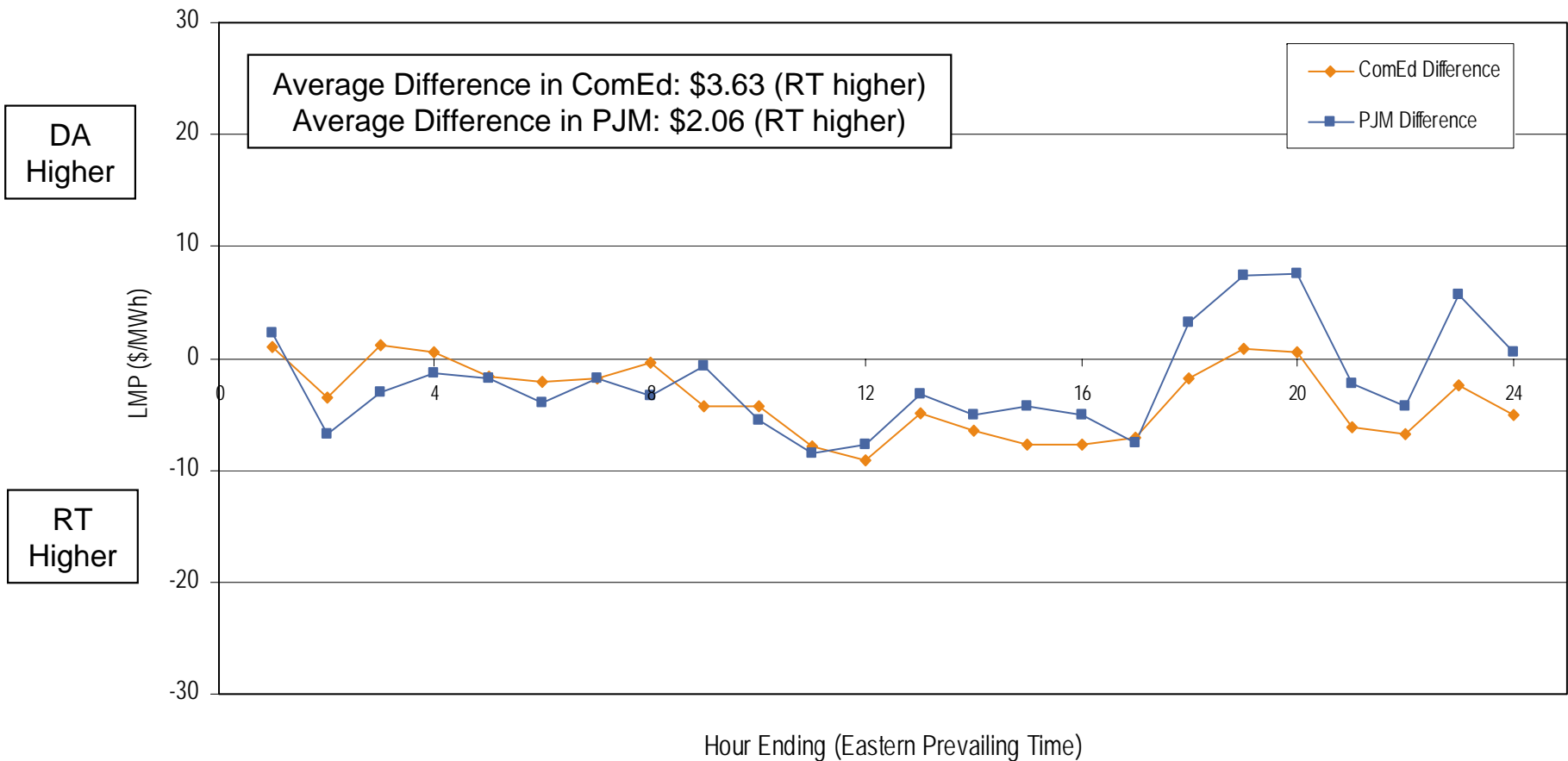
**Average Hourly Real-Time LMP  
July 2006**



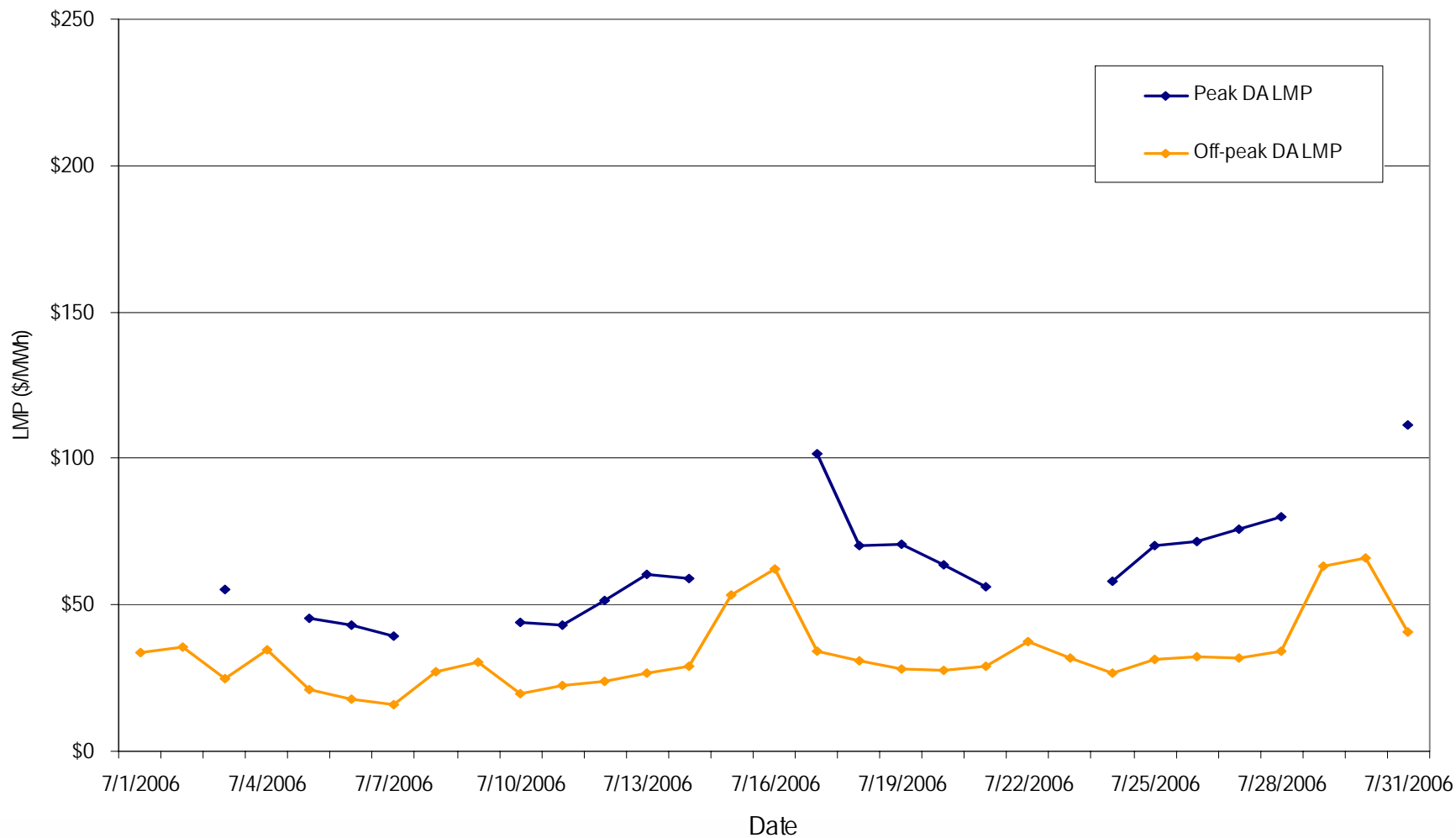
**Average Hourly Day-Ahead LMP  
July 2006**



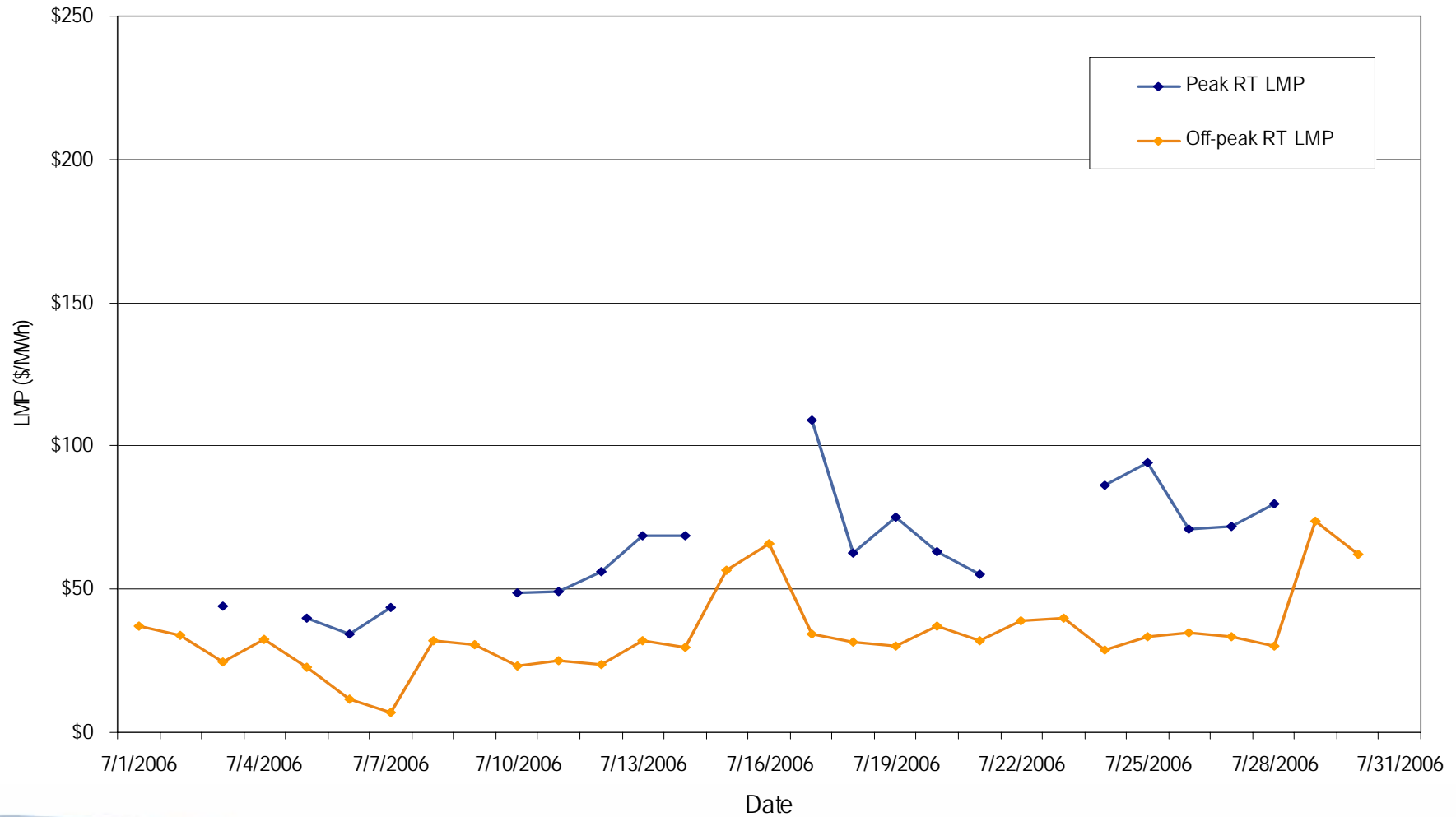
**Average Hourly Difference of Day-Ahead and Real-Time LMPs  
July 2006**



**ComEd day-ahead peak and off-peak average daily LMP  
July 2006**

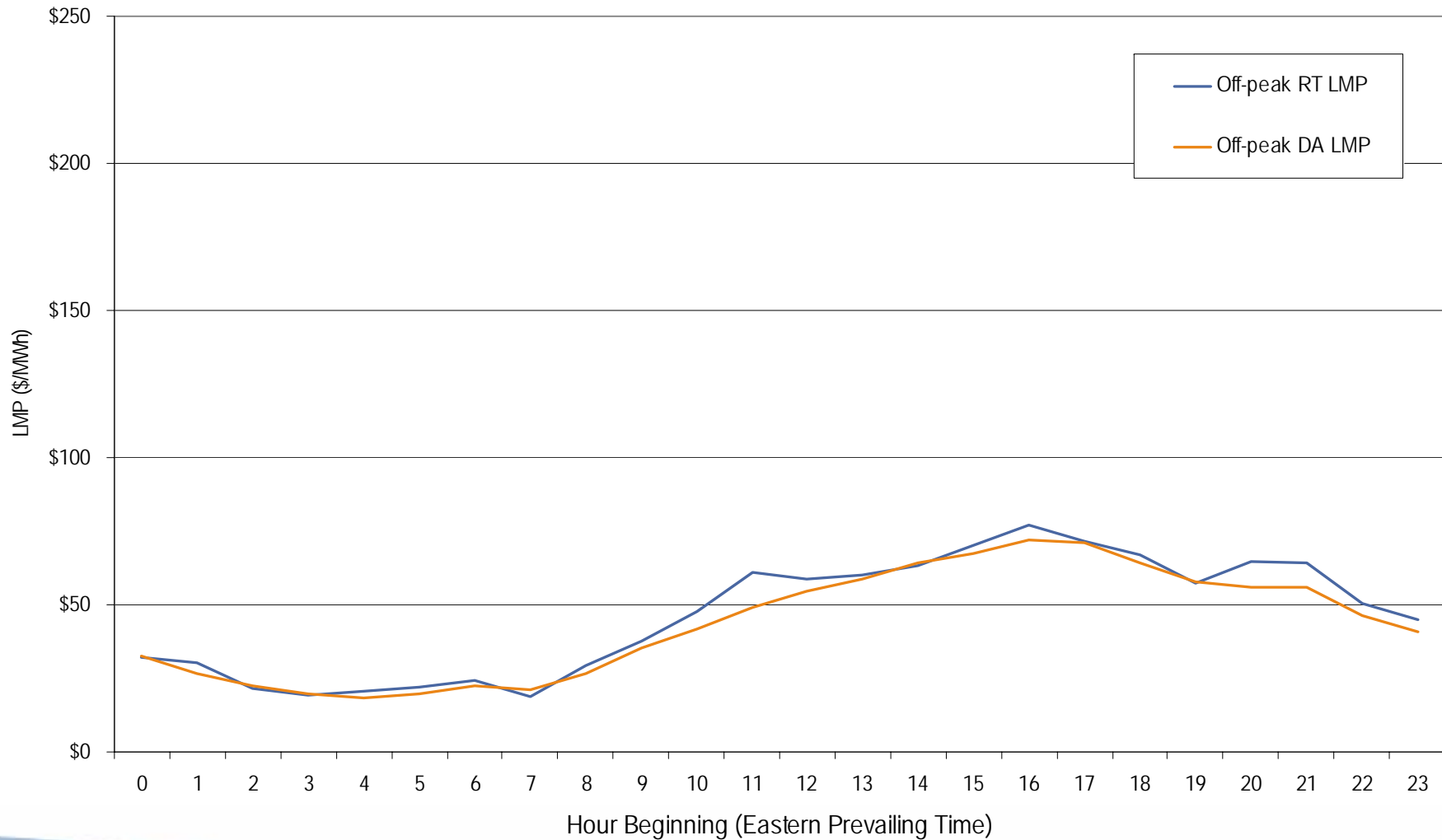


**ComEd real-time peak and off-peak average daily LMP  
July 2006**

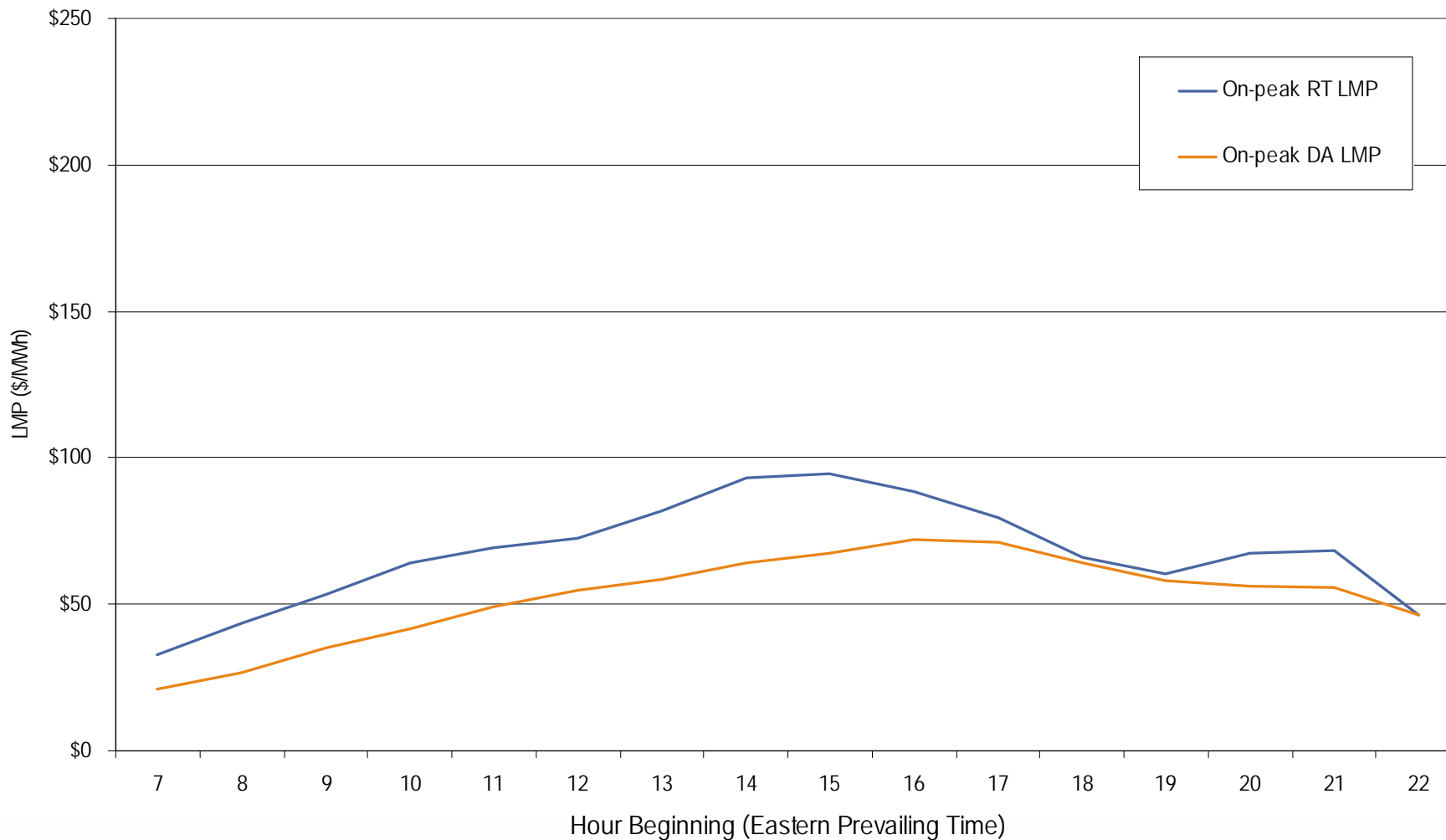




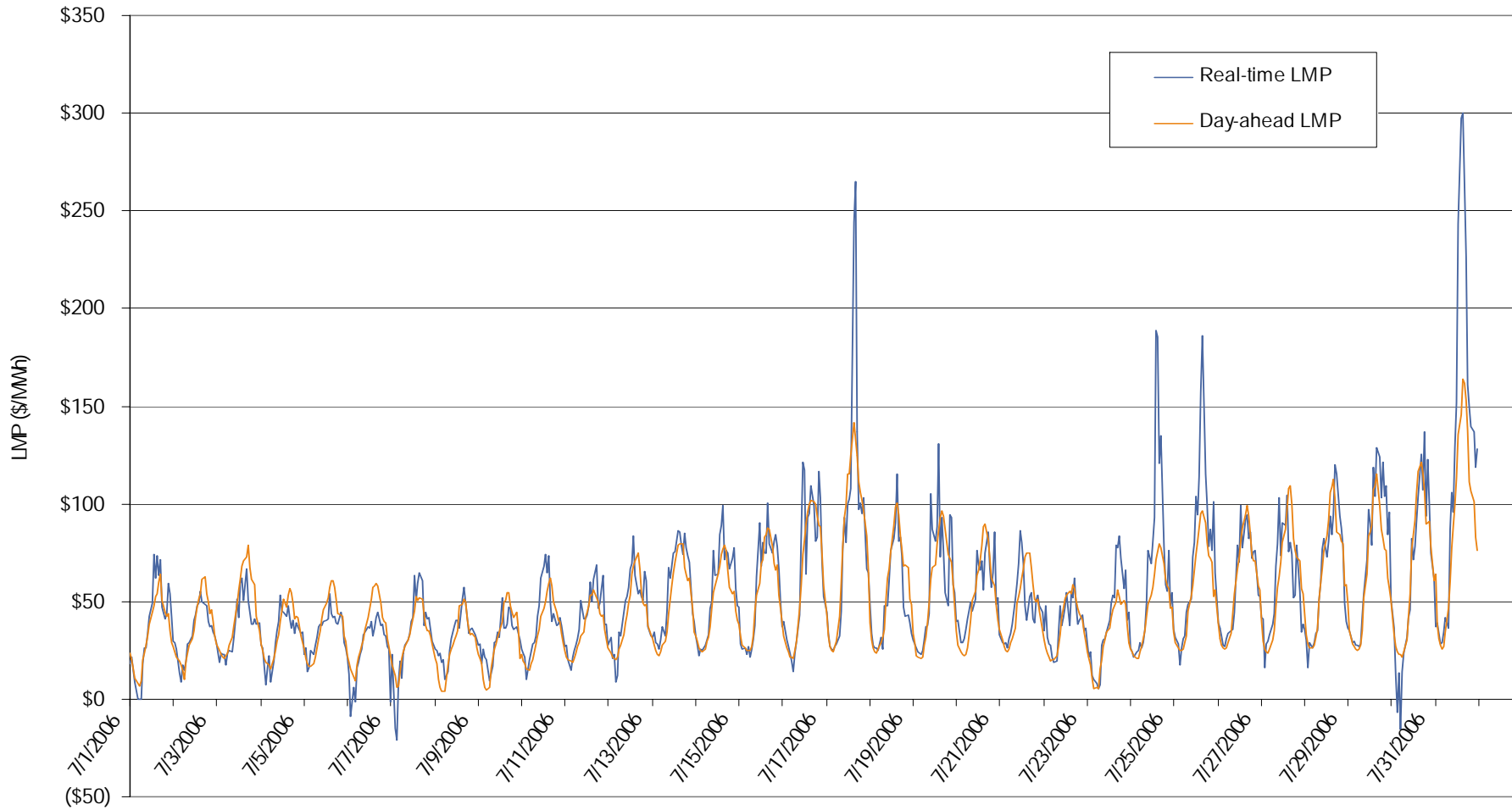
**ComEd real-time and day-ahead hourly average off-peak LMP  
July 2006**



**ComEd real-time and day-ahead hourly average on-peak LMP  
July 2006**

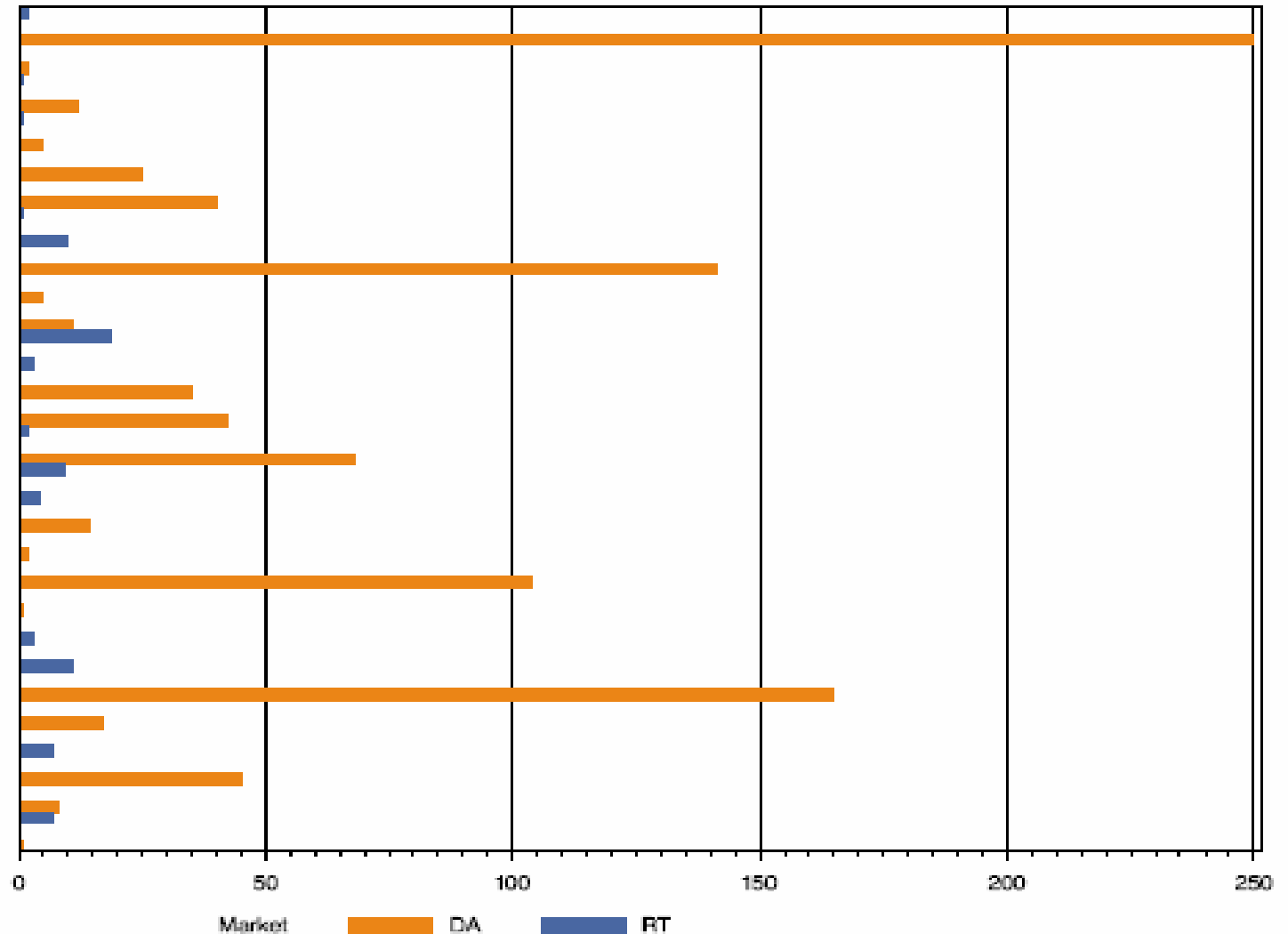


**ComEd real-time and day-ahead hourly zonal LMP  
July 2006**



## COMED Congestion Event Hours by Facility July 2006

6603 138 KV 6603 1  
 Calumet — River E.C.  
 Cherry Valley  
 Cherry Valley — Behidere  
 Crawford  
 Crawford — Medical Center  
 Dresden  
 East Frankfort  
 East Frankfort — Woodhill  
 Glidden — West Dekalb  
 Goodings Grove — East Frankfort  
 Goodings Grove — Elwood  
 Harbor — University  
 Jefferson — Grand  
 Jefferson — Taylor  
 Joliet — East Frankfort  
 Joliet — Joliet Central  
 LaSalle — State  
 Natoma — Franklin Park  
 Natoma — Oak Park  
 Nelson  
 Northwest — Devon  
 Oak Park — Ridgeland  
 Rockwell — Crosby  
 Tolway  
 Washington Park — University  
 Waukegan — Round Lake  
 Waukegan — Zion



## Offer Capping for July 2006:

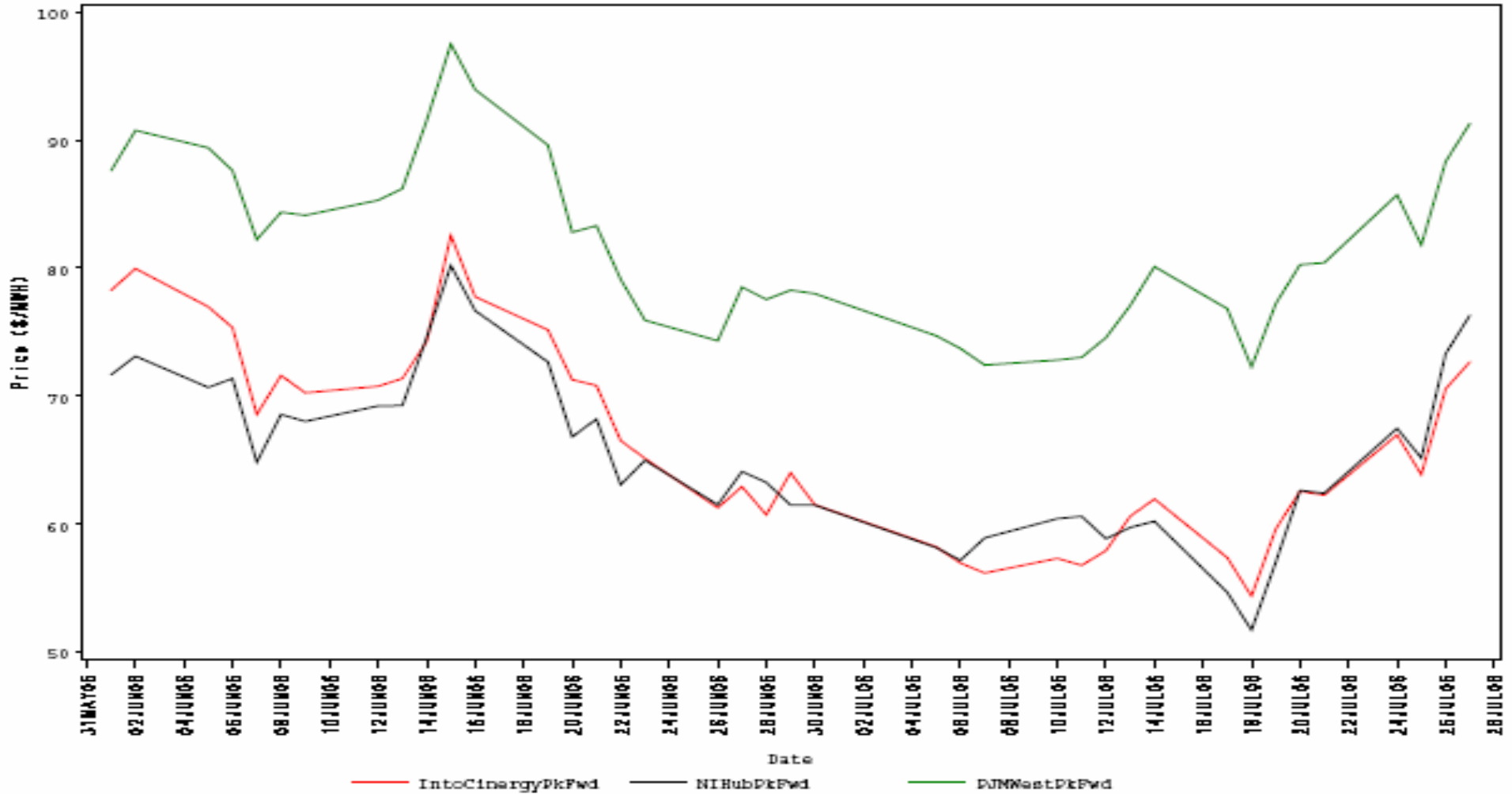
- There were 80 event hours of Real-Time congestion in ComEd in July.
  - There were 233 offer capped unit hours in Real-Time.
- There were 996 event hours of Day-Ahead congestion in ComEd in July.
  - There were 132 offer capped unit hours in Day-Ahead.

- There were no TLRs called for the ComEd Control Area in July.

- Forward prices for the August 2006 contract showed varying spreads during July.
  - Spreads reflect traders' expectations about future prices.
  - The maximum NIHub-CINergy spread was \$3.85 per MWh during July.
  - The minimum NIHub-CINergy spread was -\$2.70 per MWh during July.
  - The average NIHub-CINergy spread was \$0.51 per MWh during July.
  - The NIHub-CINergy spread was \$3.65 per MWh on the final trading day for the August 2006 contract.

## Cinergy, NIHub and PJM West Forward Prices

contract=Aug06





- Forward prices for the September 2006 contract showed varying spreads during July.
  - Spreads reflect traders' expectations about future prices.
  - The maximum NIHub-CINergy spread was \$2.35 per MWh during July.
  - The minimum NIHub-CINergy spread was -\$3.50 per MWh during July.
  - The average NIHub-CINergy spread was -\$0.07 per MWh during July.
  - The NIHub-CINergy spread was \$1.15 per MWh on the final trading day of June for the September 2006 contract.

## Cinergy, NIHub and PJM West Forward Prices

contract-Sep06

