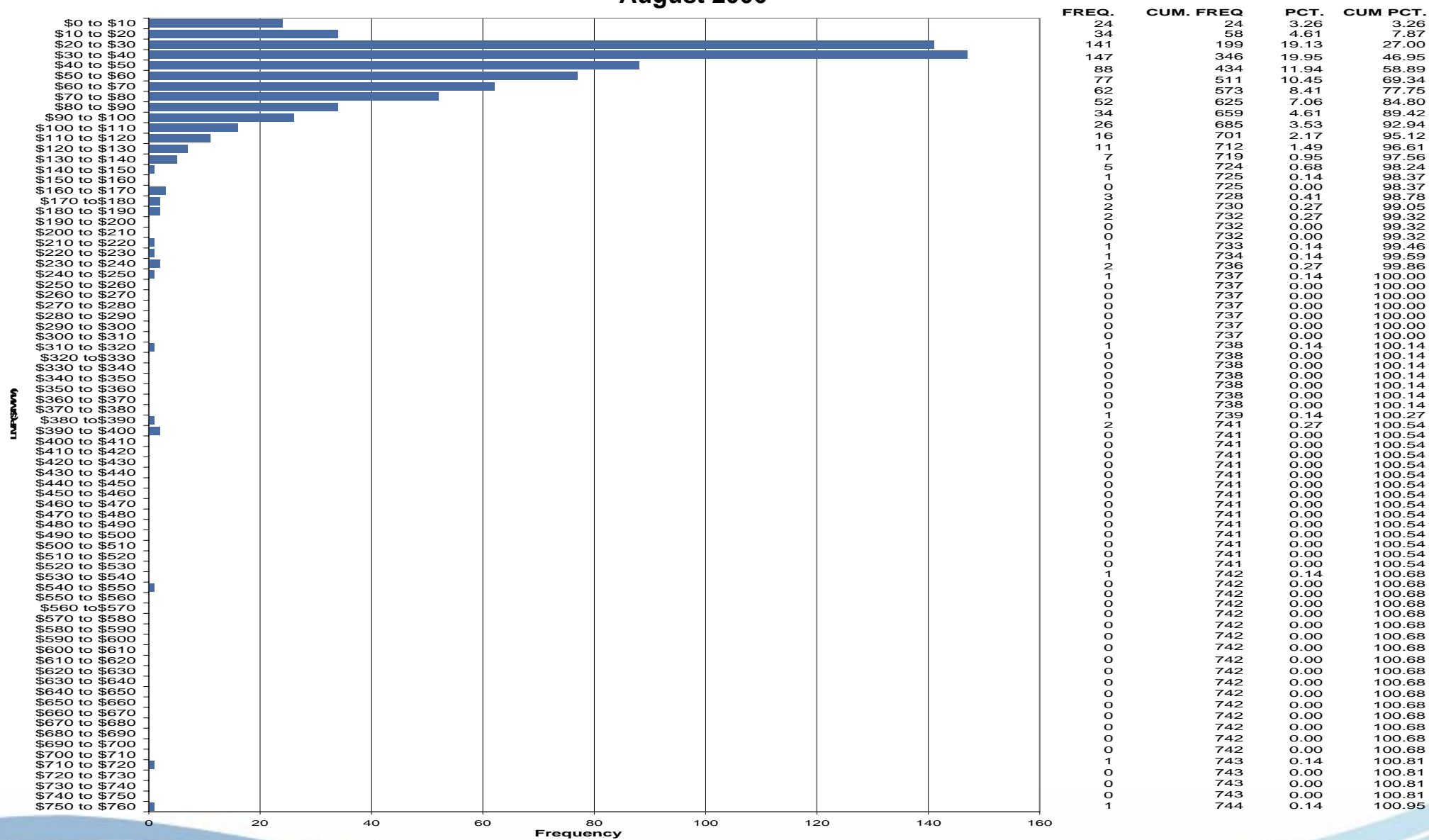




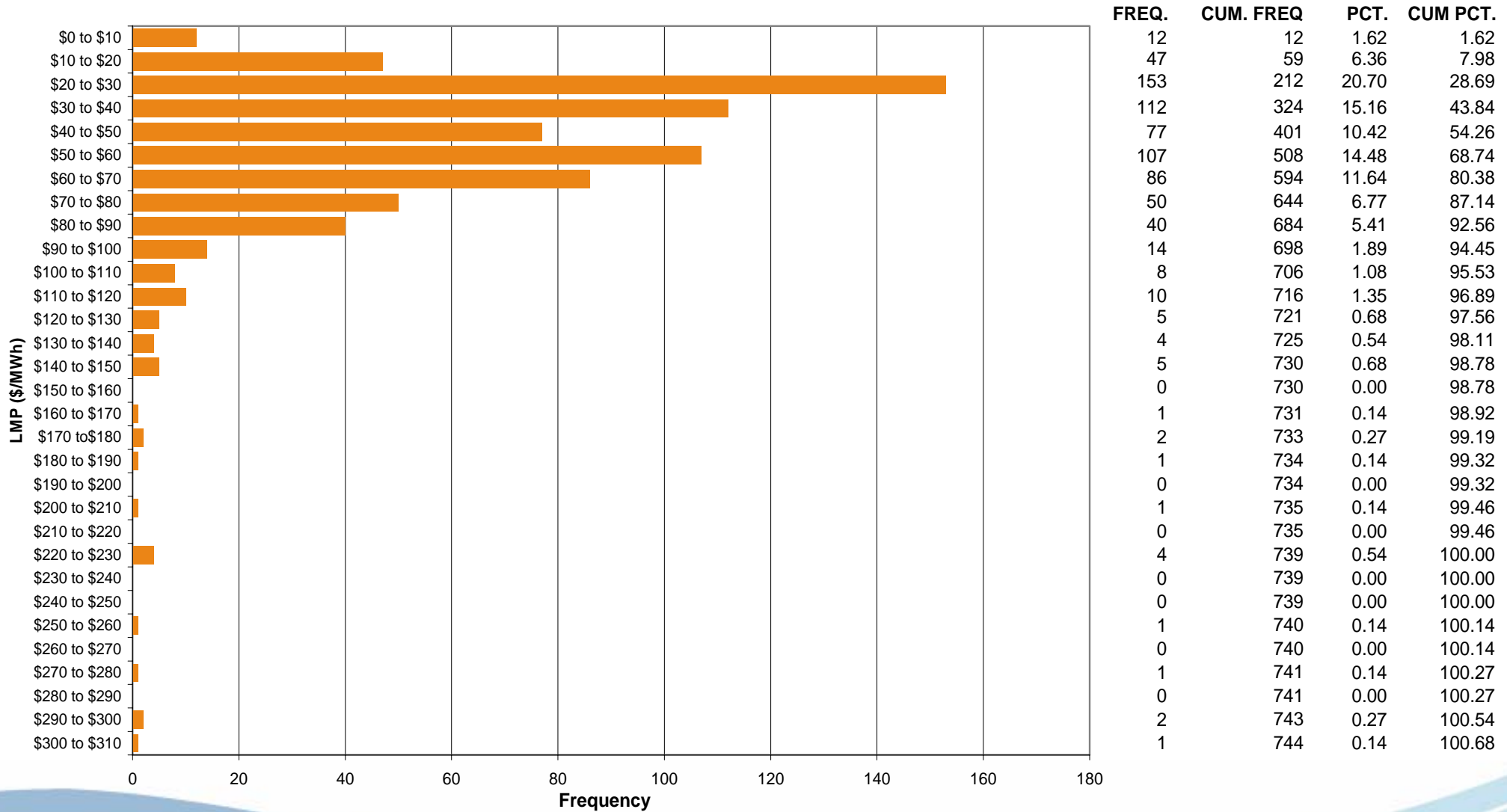
ComEd Control Zone Market Monitoring Report for August 2006

Market Monitoring Unit
September 2006

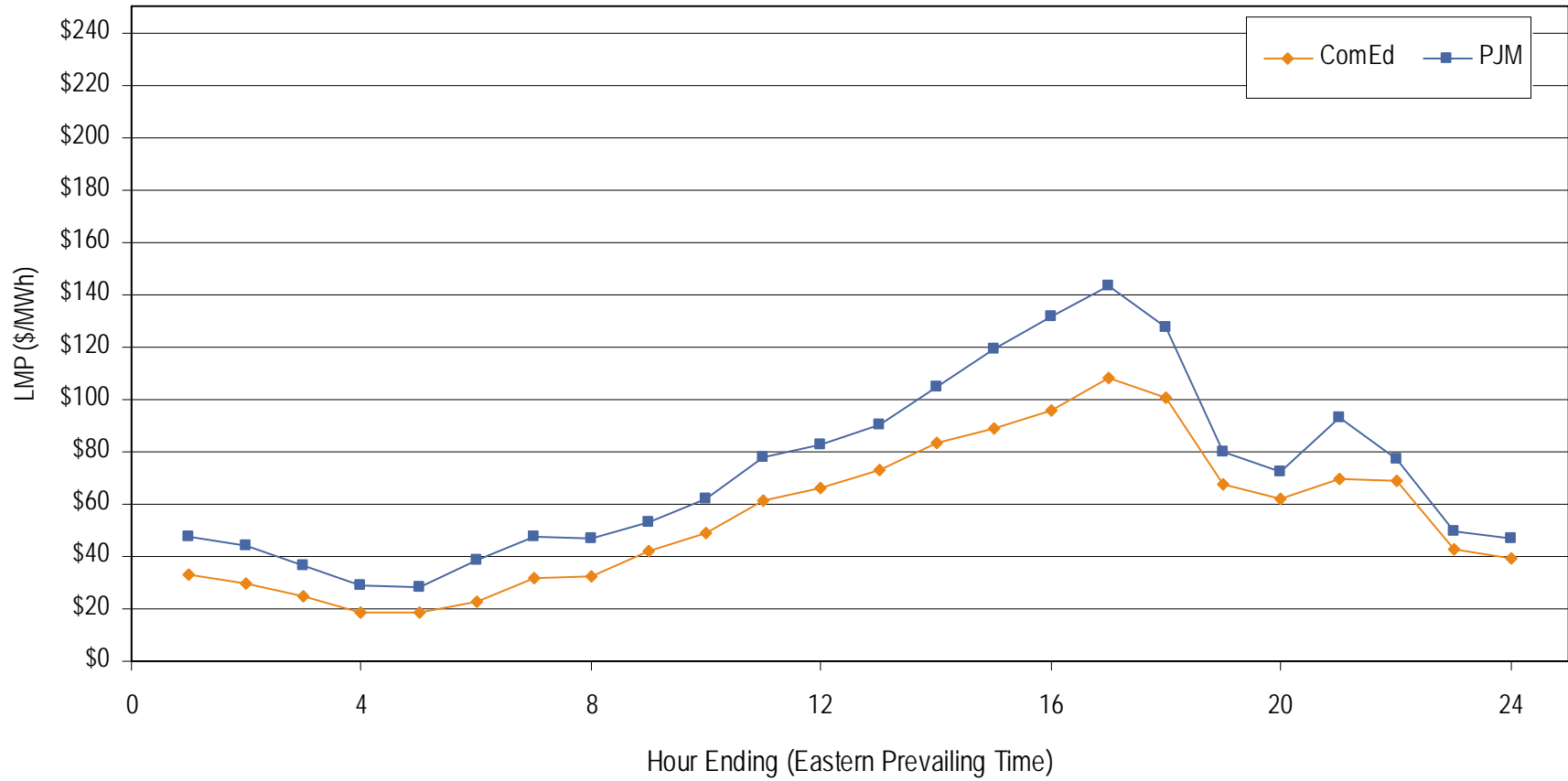
Frequency distribution by hours of ComEd real-time LMP August 2006



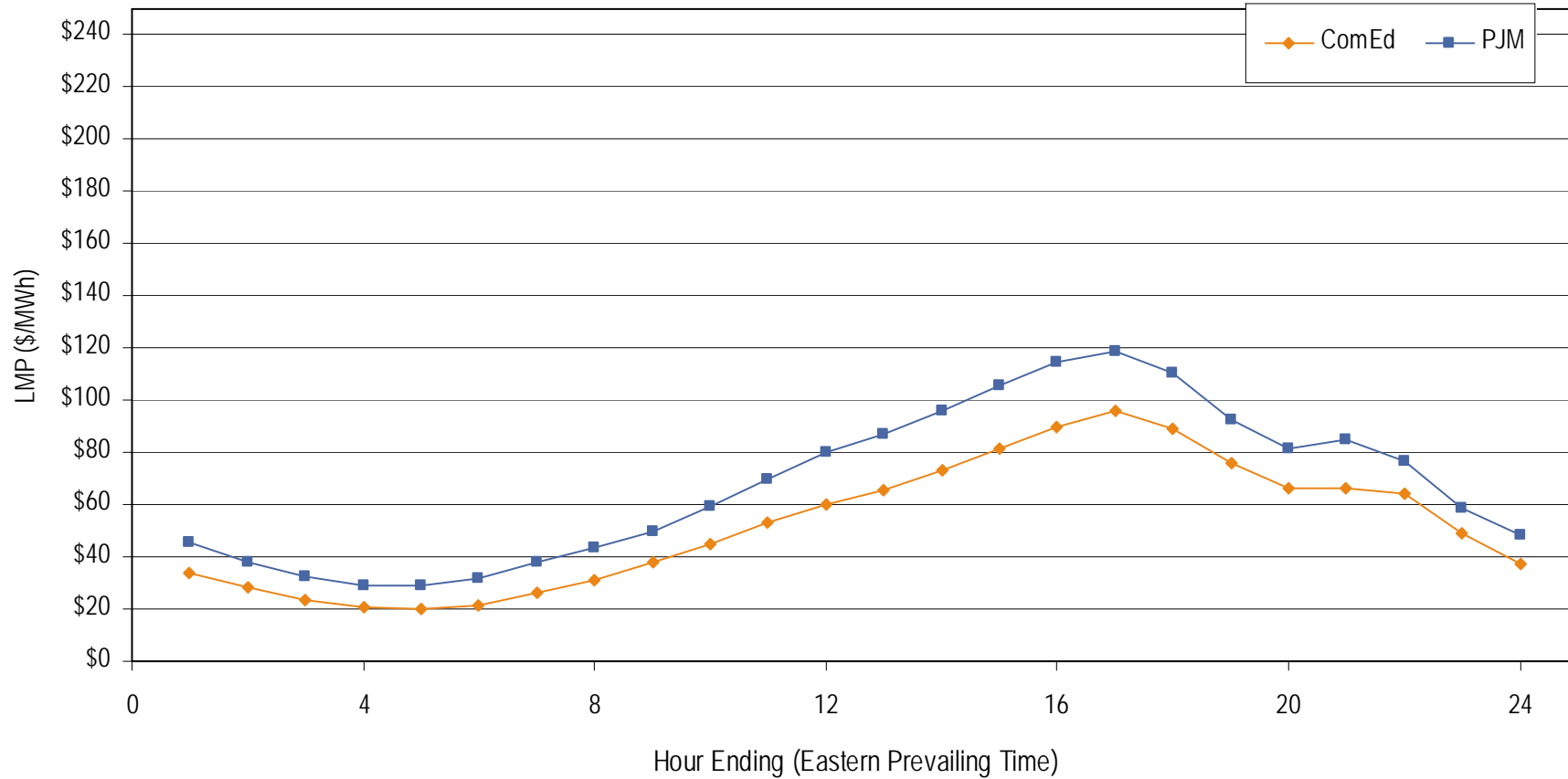
Frequency distribution by hours of ComEd day-ahead LMP August 2006



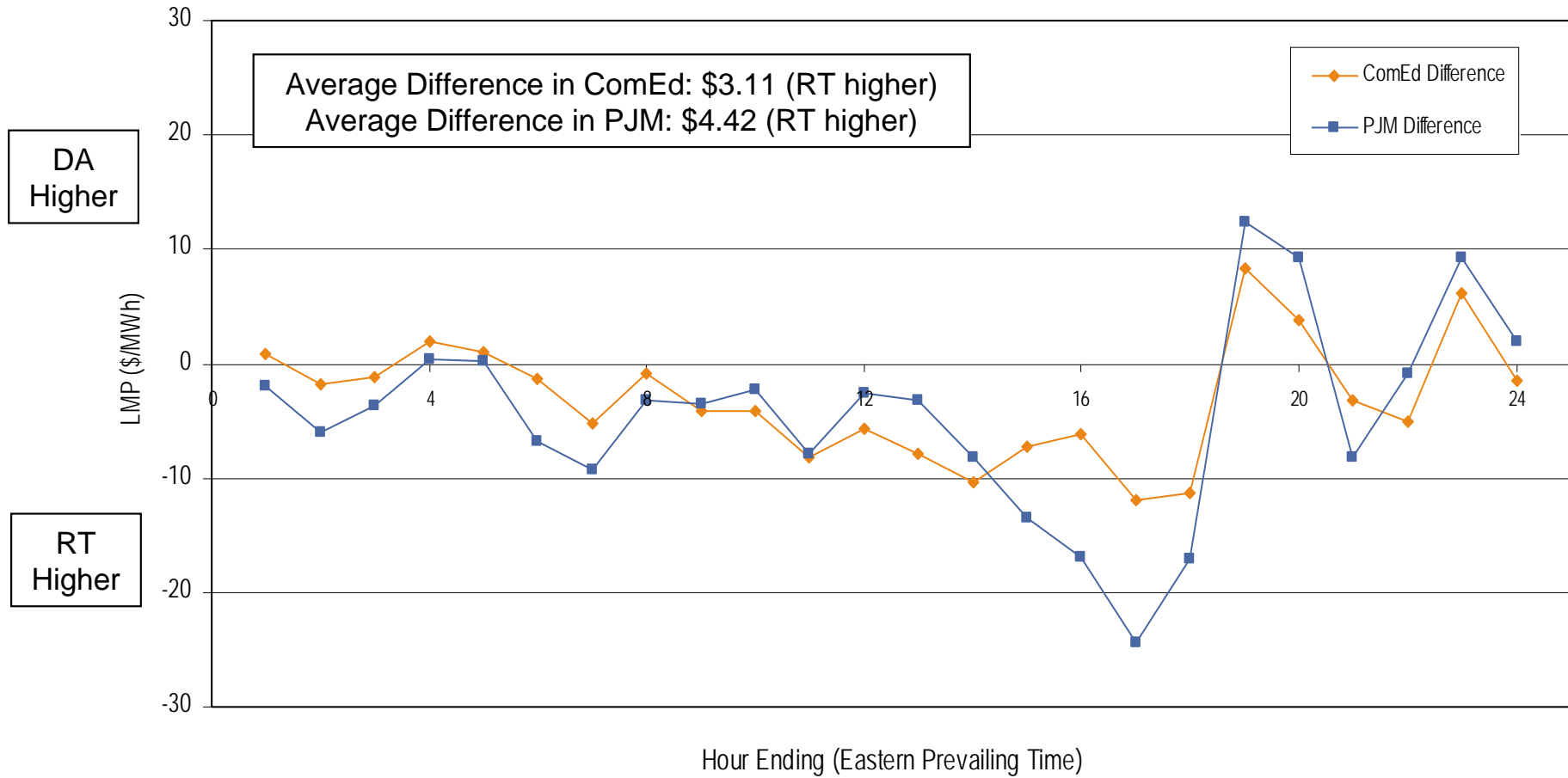
**Average Hourly Real-Time LMP
August 2006**



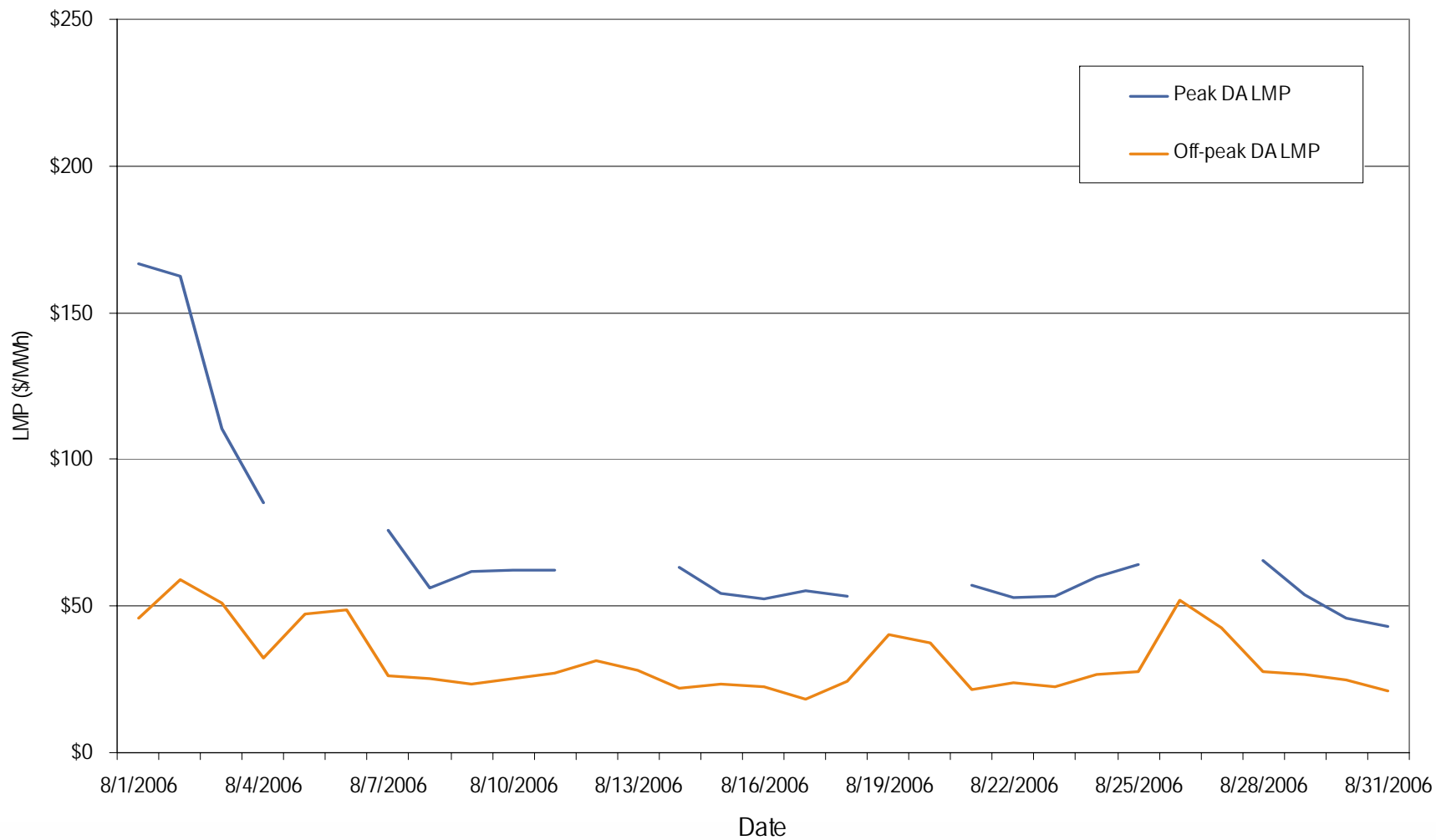
**Average Hourly Day-Ahead LMP
August 2006**



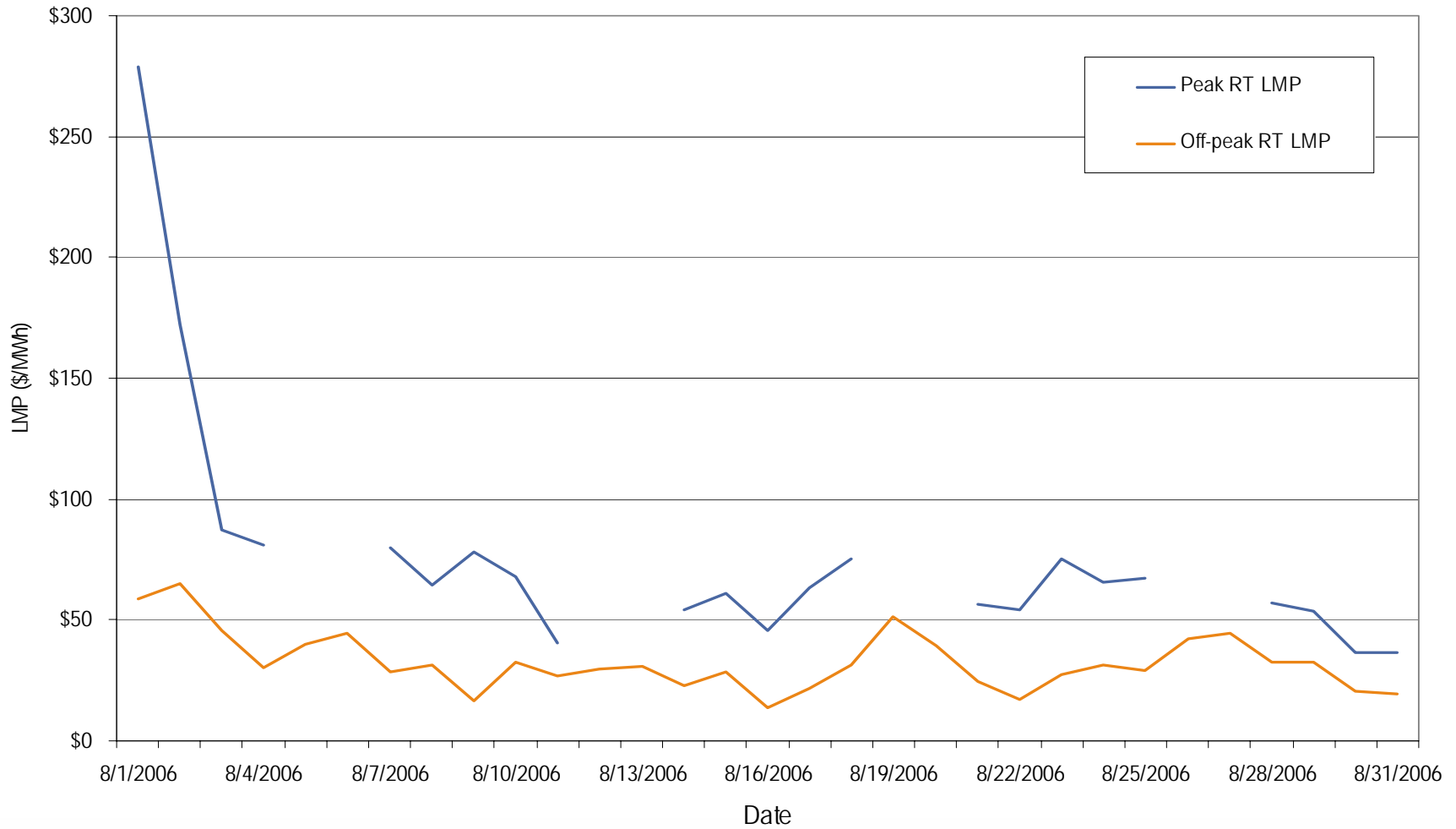
**Average Hourly Difference of Day-Ahead and Real-Time LMPs
August 2006**



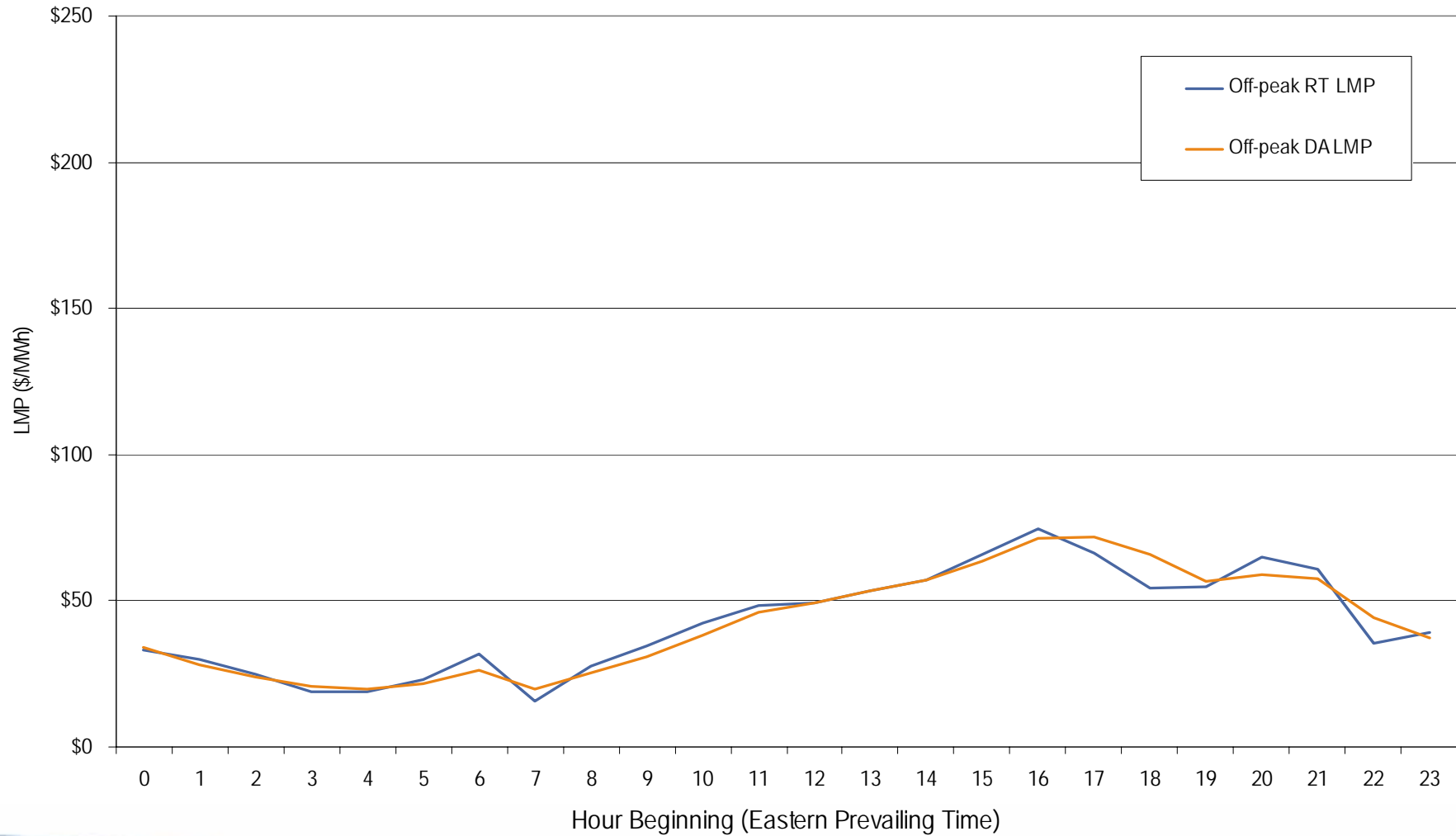
**ComEd day-ahead peak and off-peak average daily LMP
August 2006**



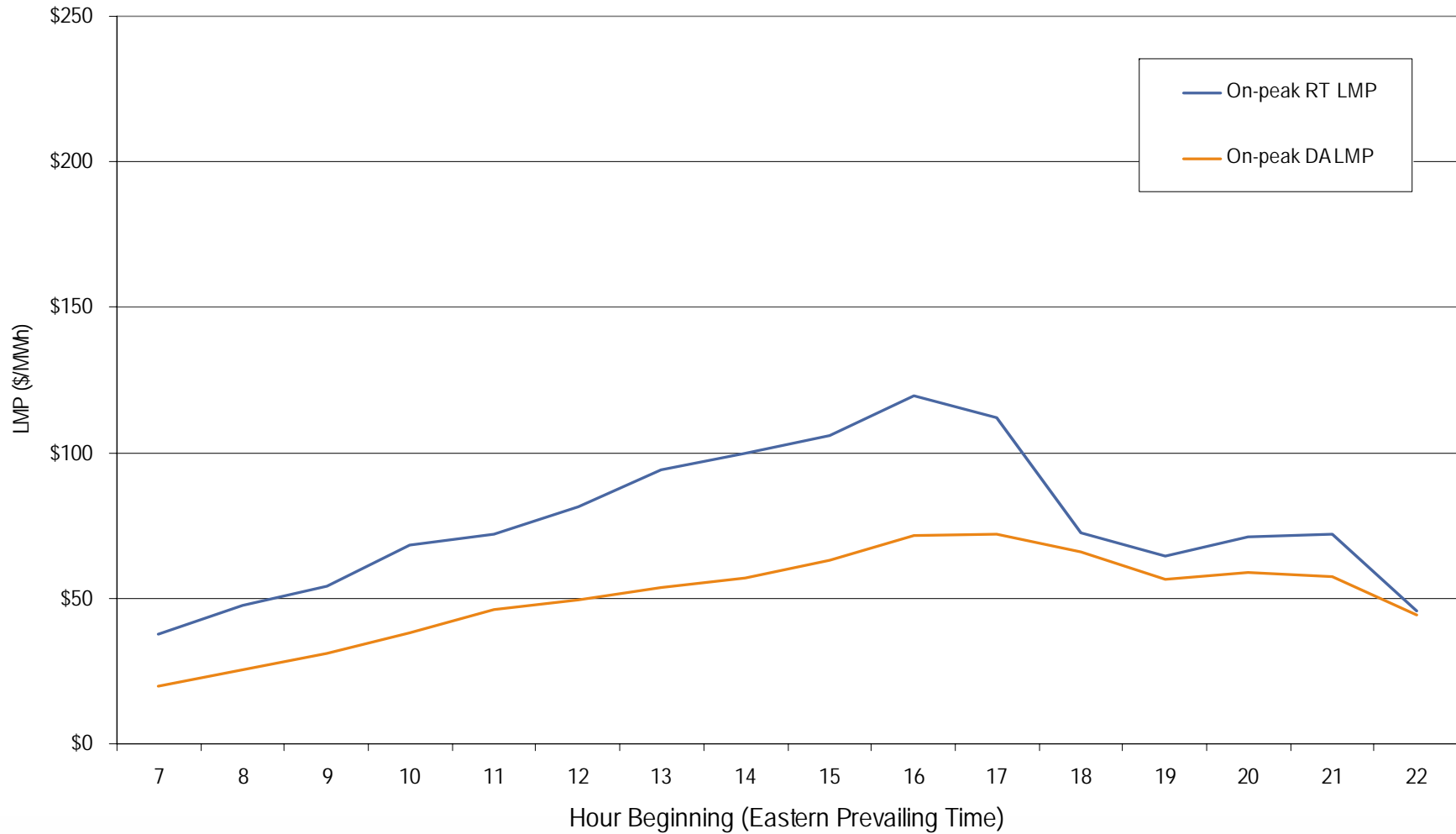
**ComEd real-time peak and off-peak average daily LMP
August 2006**



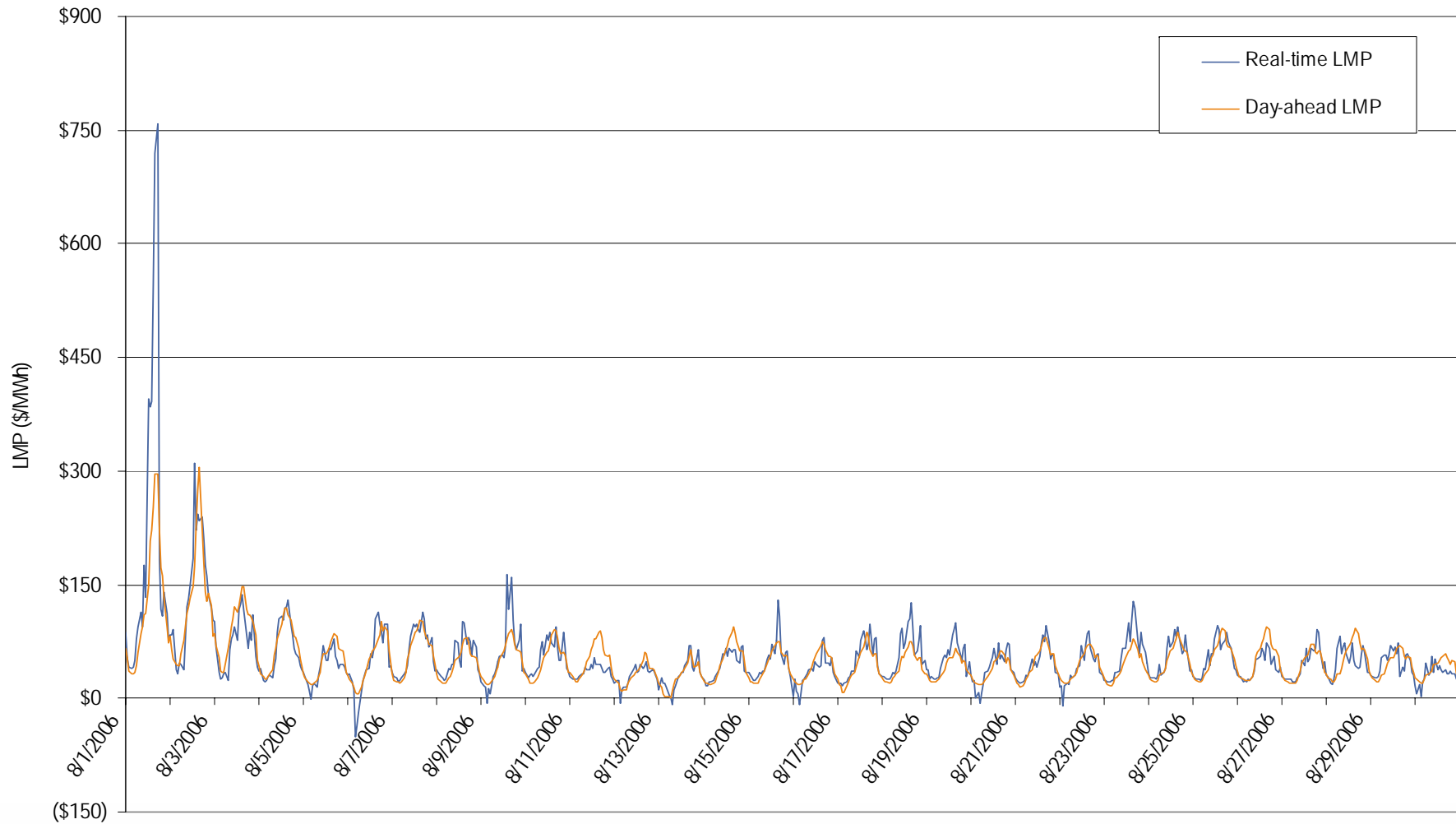
**ComEd real-time and day-ahead hourly average off-peak LMP
August 2006**



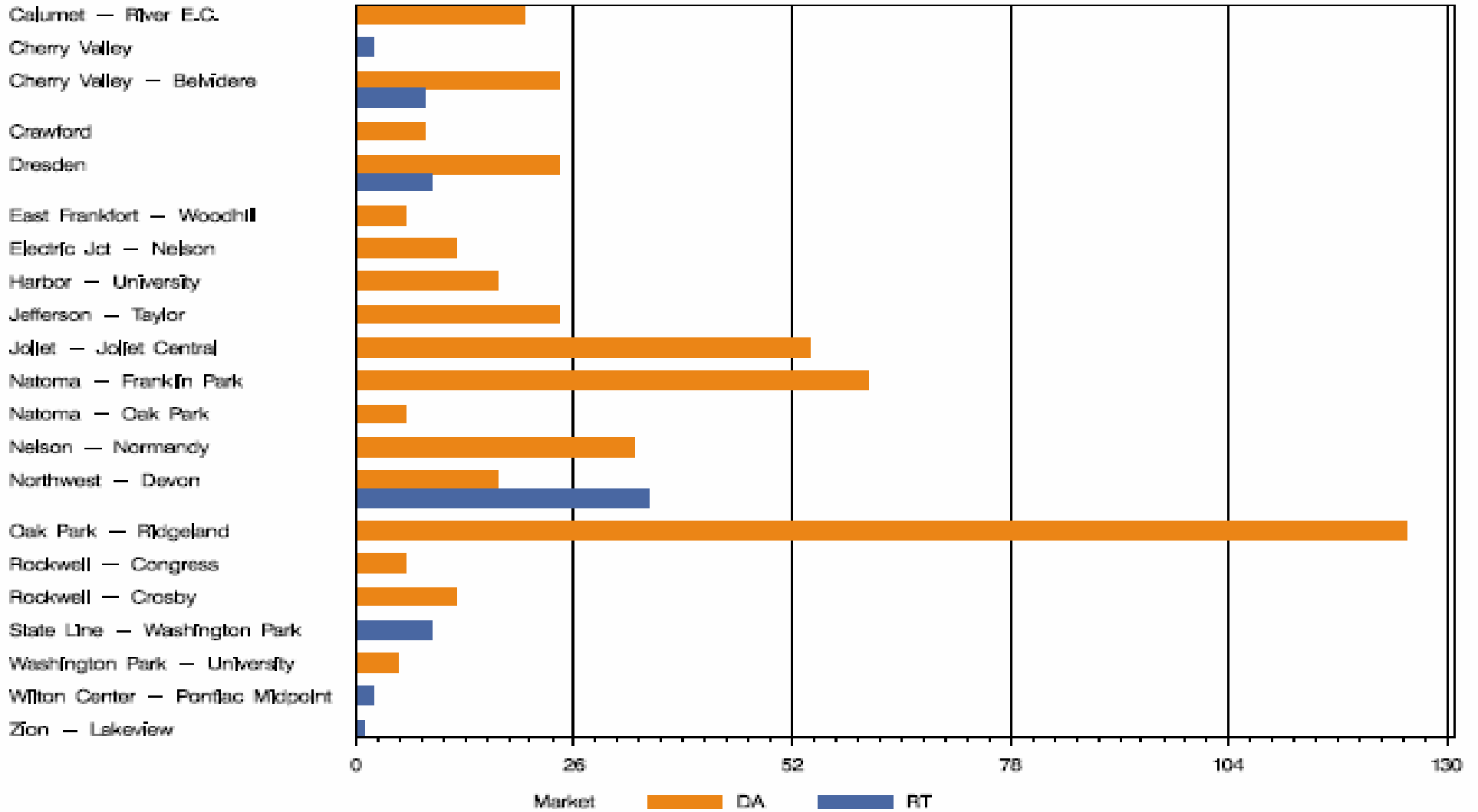
**ComEd real-time and day-ahead hourly average on-peak LMP
August 2006**



ComEd real-time and day-ahead hourly zonal LMP August 2006



COMED Congestion Event Hours by Facility August 2006



Offer Capping for August 2006:

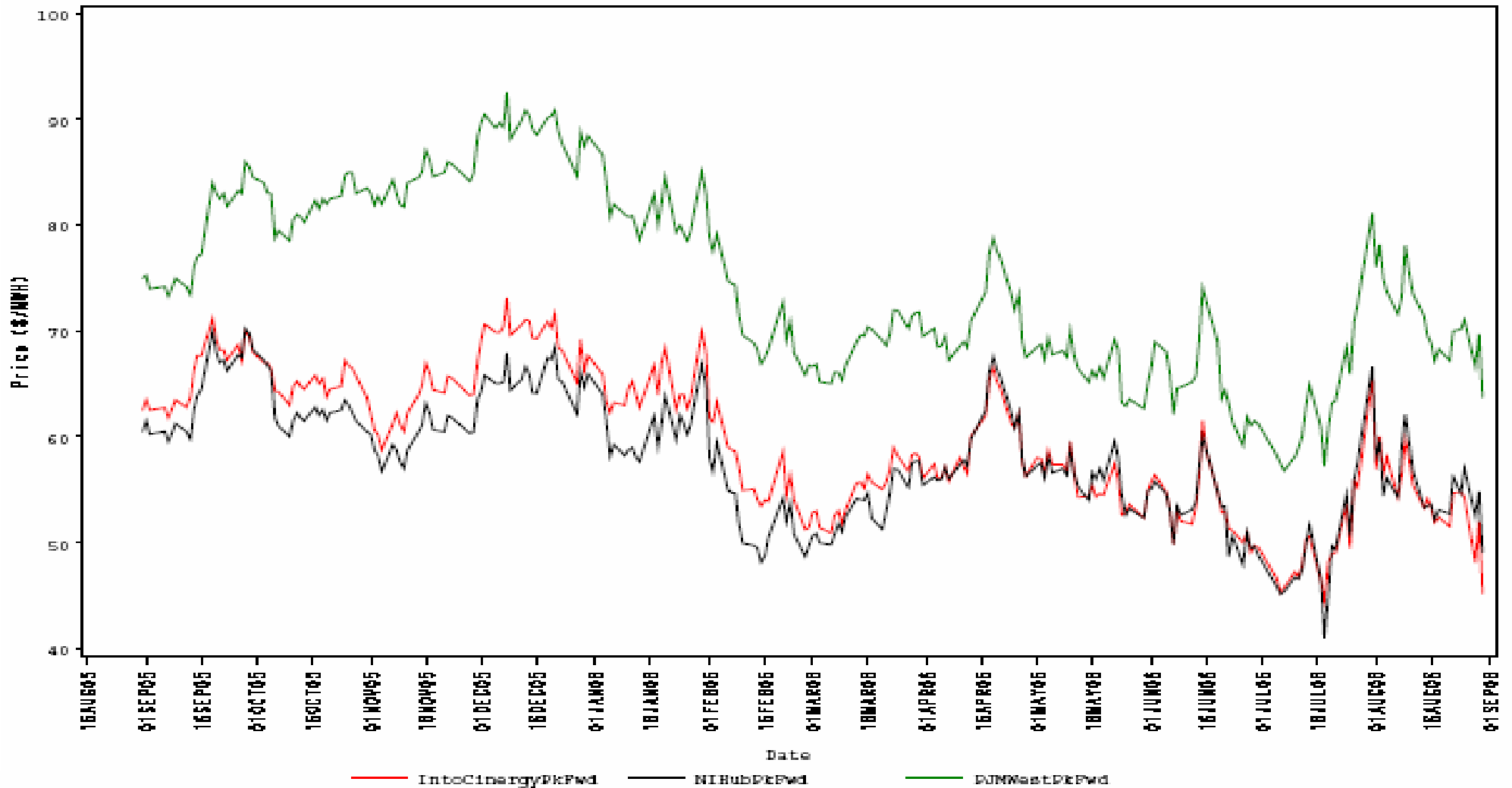
- There were 66 event hours of Real-Time congestion in ComEd in August.
 - There were 217 offer capped unit hours in Real-Time.
- There were 454 event hours of Day-Ahead congestion in ComEd in August.
 - There were 175 offer capped unit hours in Day-Ahead.

- There were no TLRs called for the ComEd Control Area in August.

- Forward prices for the September 2006 contract showed varying spreads during August.
 - Spreads reflect traders' expectations about future prices.
 - The maximum NIHub-CINergy spread was \$4.40 per MWh during August.
 - The minimum NIHub-CINergy spread was -\$2.00 per MWh during August.
 - The average NIHub-CINergy spread was \$1.05 per MWh during August.
 - The NIHub-CINergy spread was \$3.90 per MWh on the final trading day for the September 2006 contract.

Cinergy, NIHub and PJM West Forward Prices

contract=Sep06



- Forward prices for the Quarter 4 2006 contract showed varying spreads during August.
 - Spreads reflect traders' expectations about future prices.
 - The maximum NIHub-CINergy spread was \$3.40 per MWh during August.
 - The minimum NIHub-CINergy spread was -\$0.90 per MWh during August.
 - The average NIHub-CINergy spread was \$1.71 per MWh during August.
 - The NIHub-CINergy spread was \$0.60 per MWh on the final trading day of August for the Quarter 4 2006 contract.

Cinergy, NIHub and PJM West Forward Prices

contract=Qtr406

