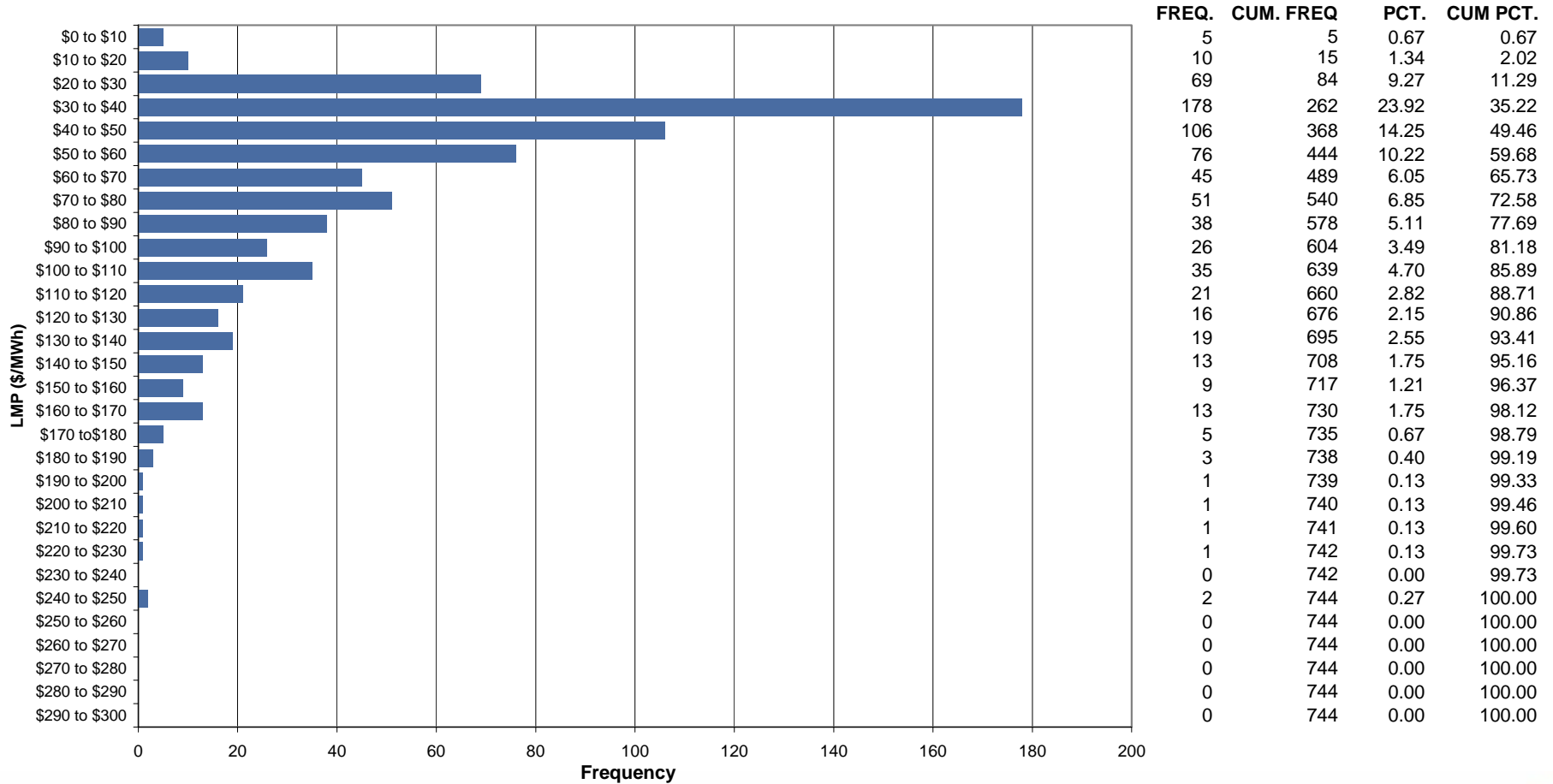




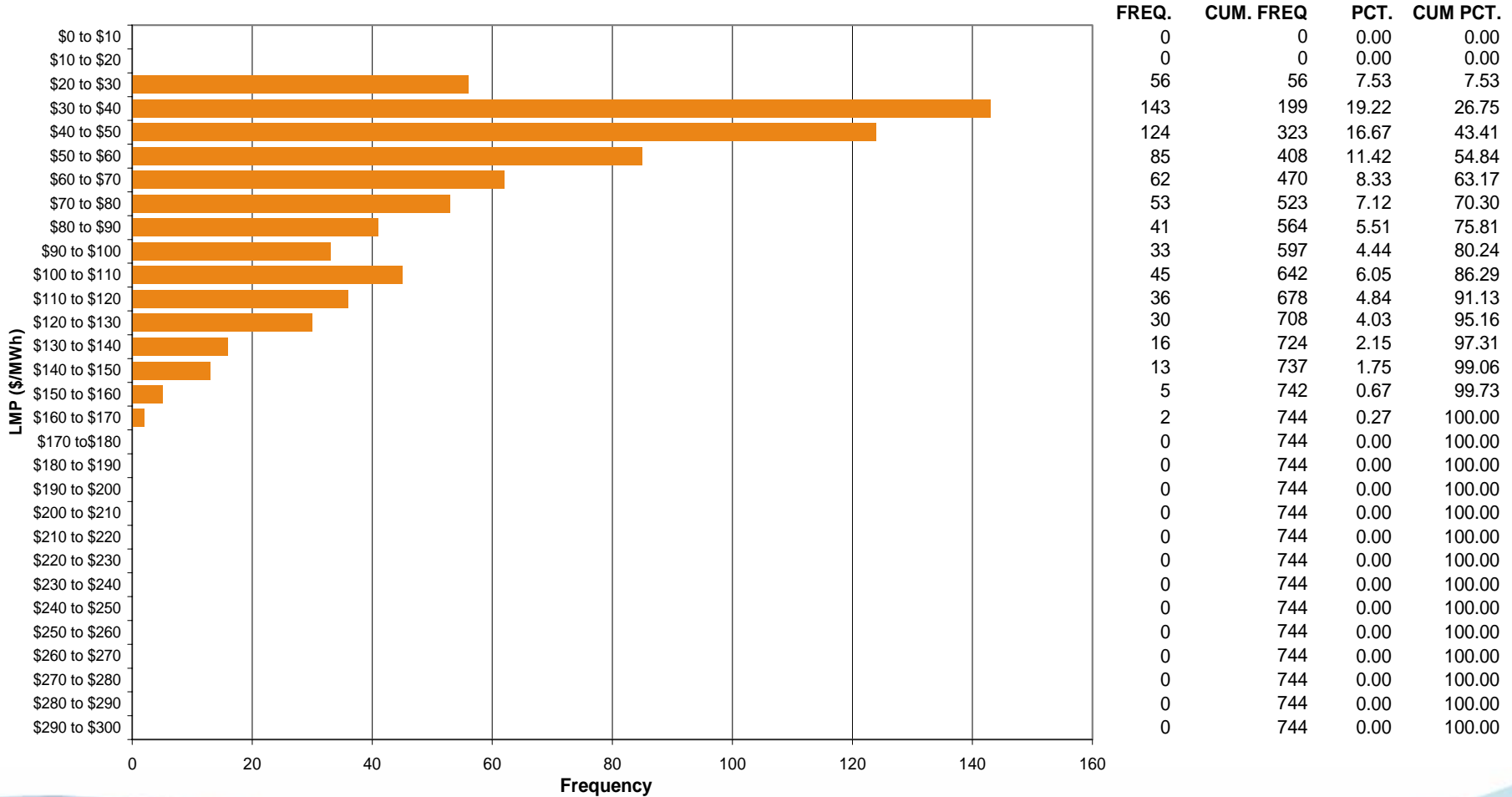
# ComEd Control Zone Market Monitoring Report for December 2005

Market Monitoring Unit  
January 2006

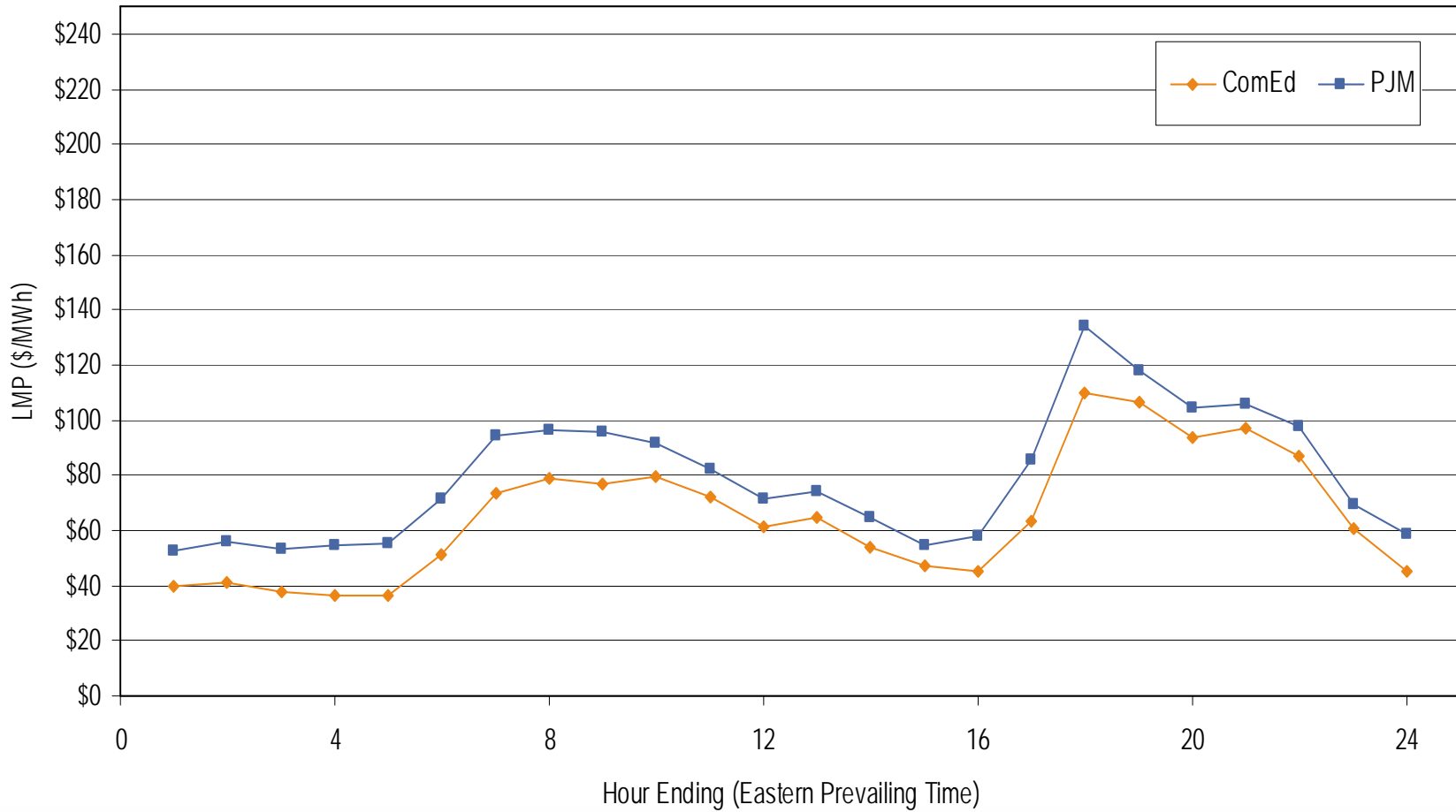
### Frequency Distribution by Hours of ComEd Real-time LMP December 2005



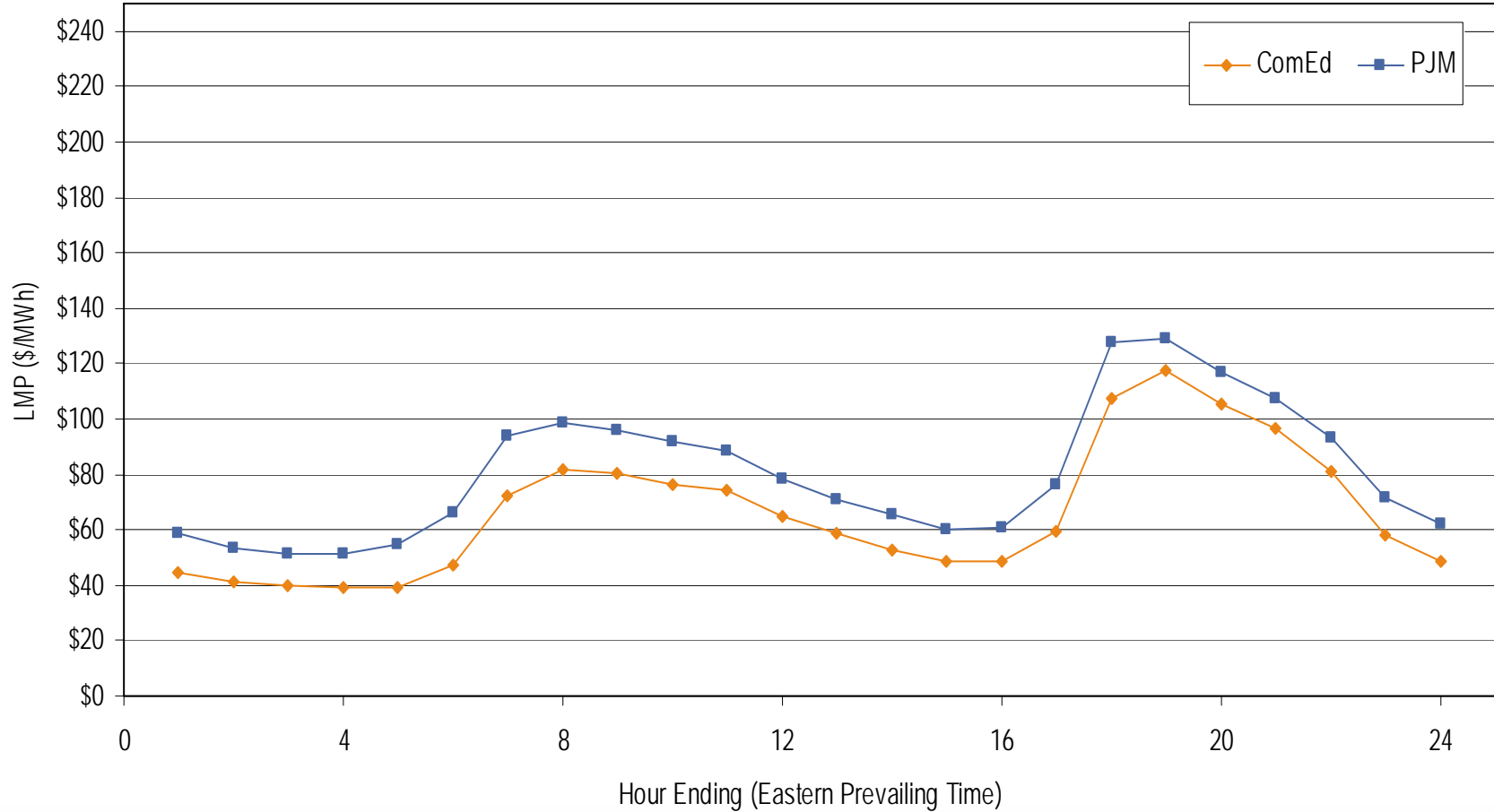
### Frequency Distribution by Hours of ComEd Day-ahead LMP December 2005



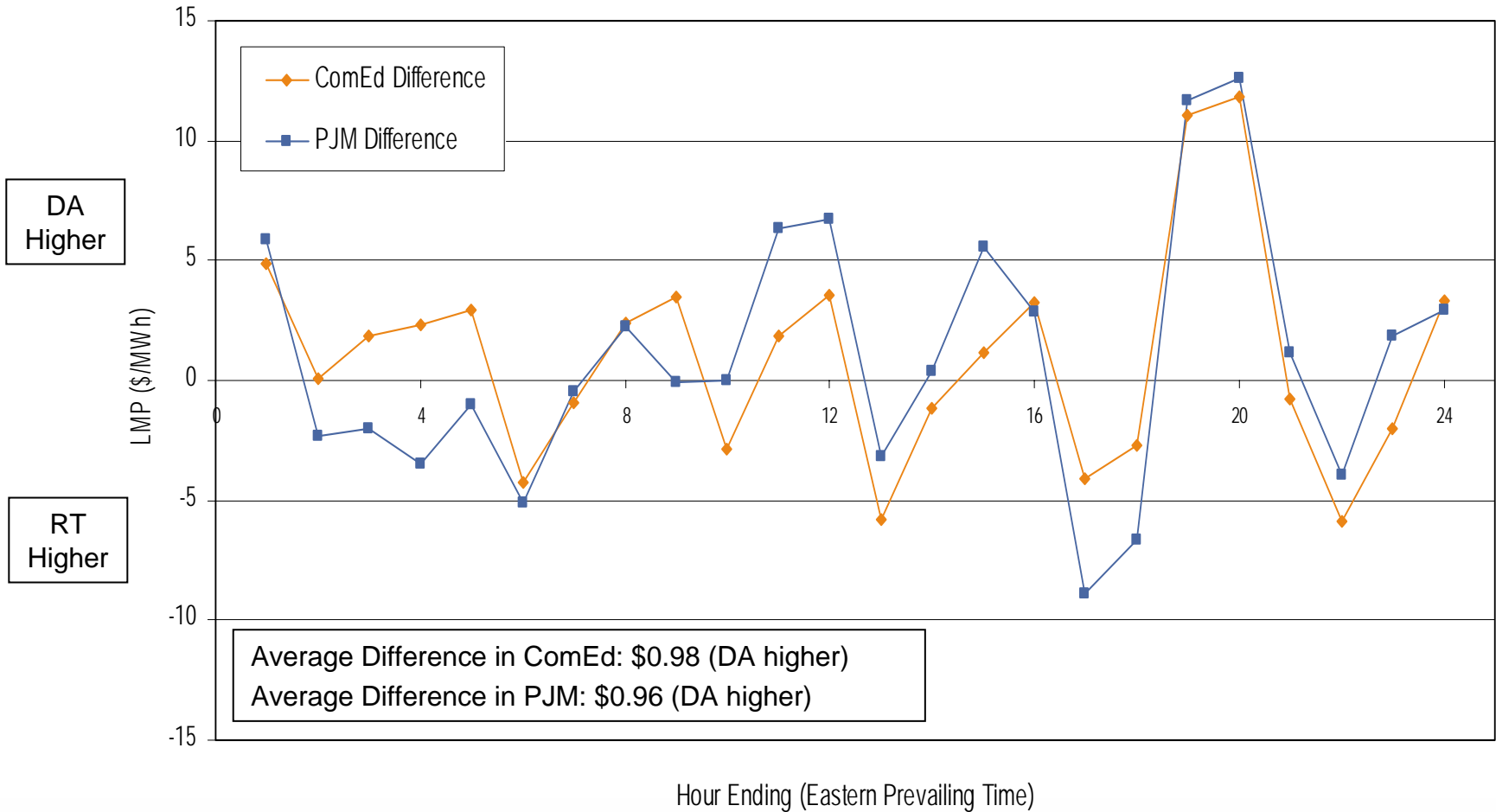
### Average Hourly Real-Time LMP December 2005



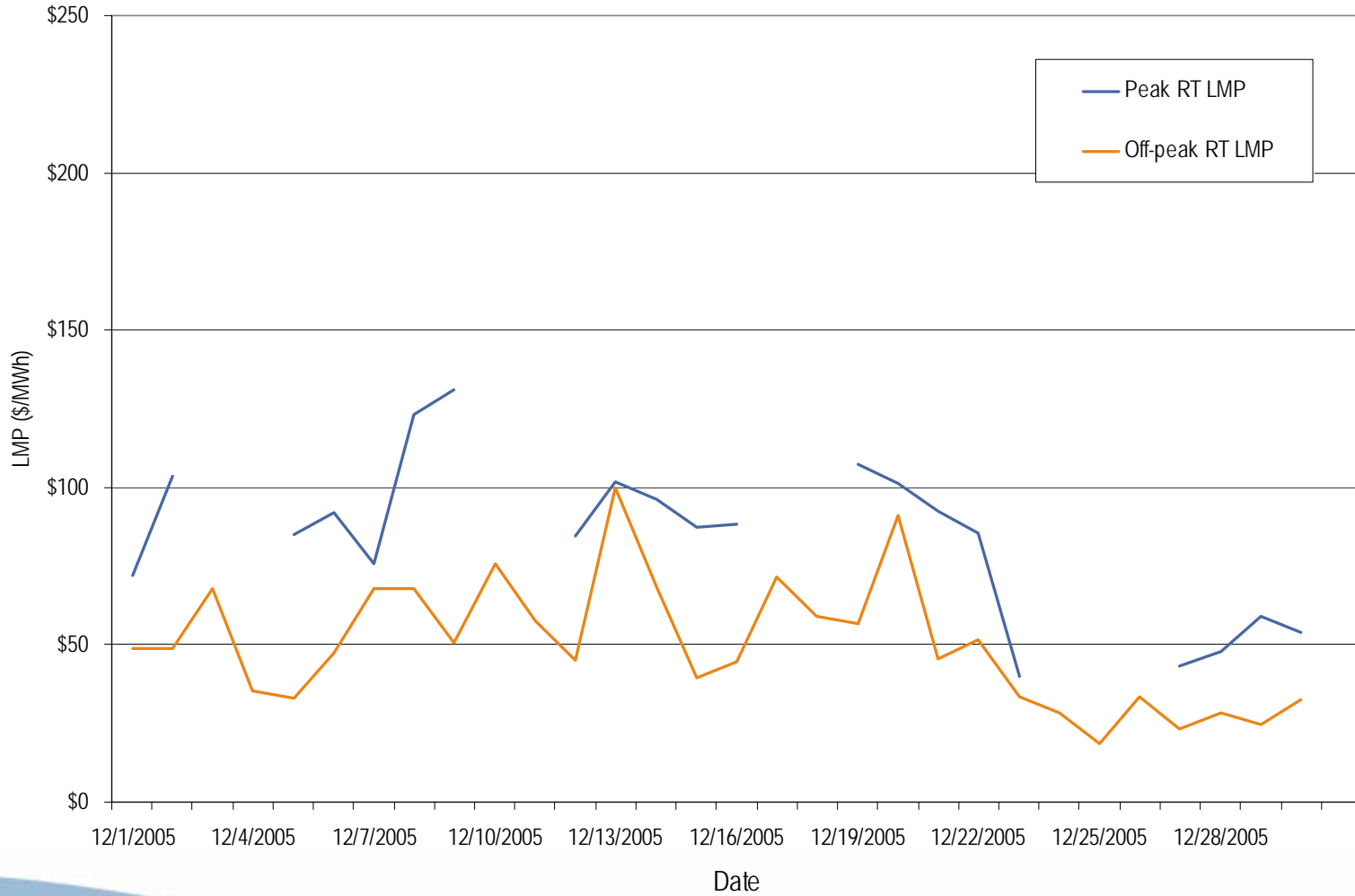
### Average Hourly Day-Ahead LMP December 2005



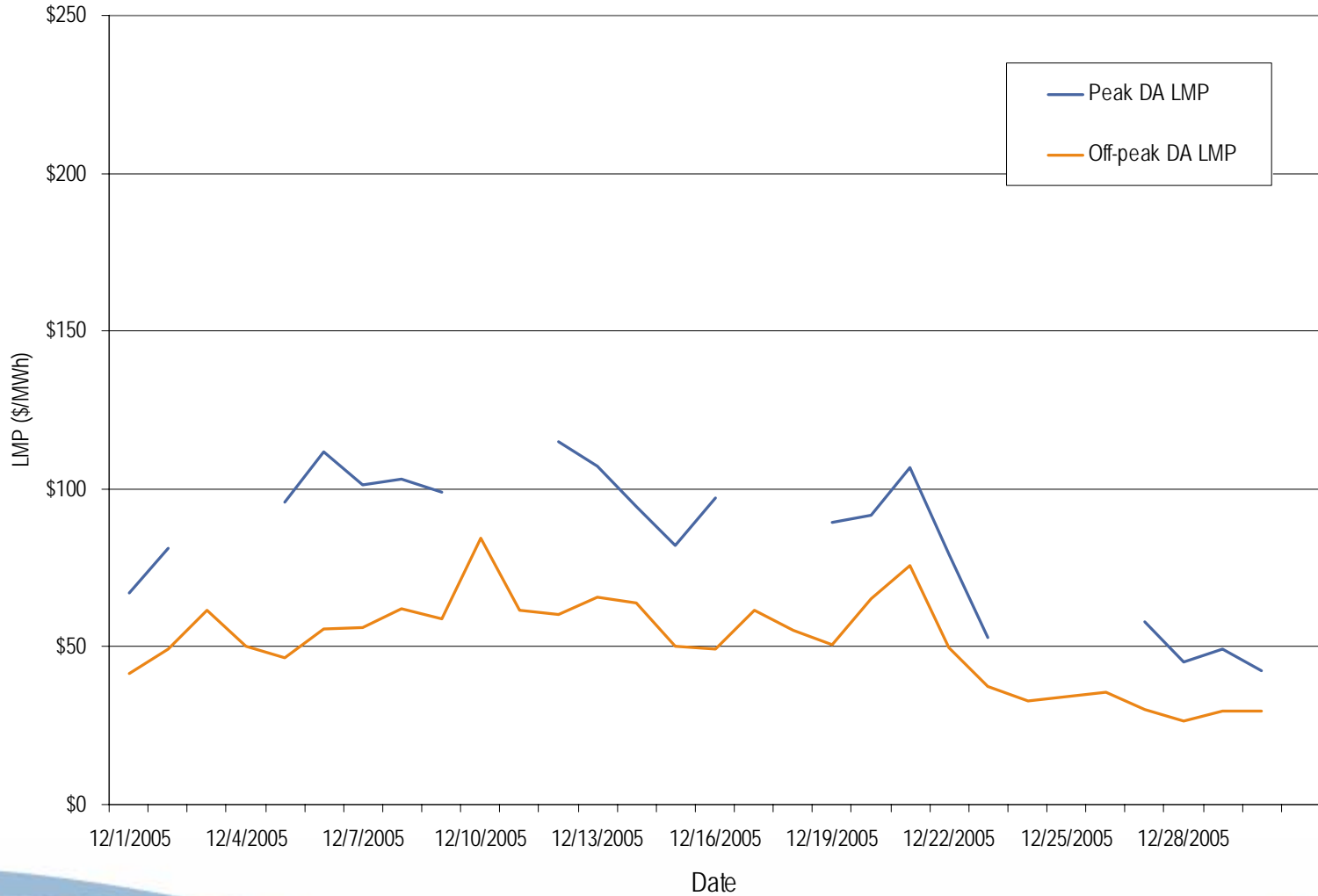
## Average Hourly Difference of Day-Ahead and Real-Time LMPs December 2005



## ComEd real-time peak and off-peak average daily LMP December 2005

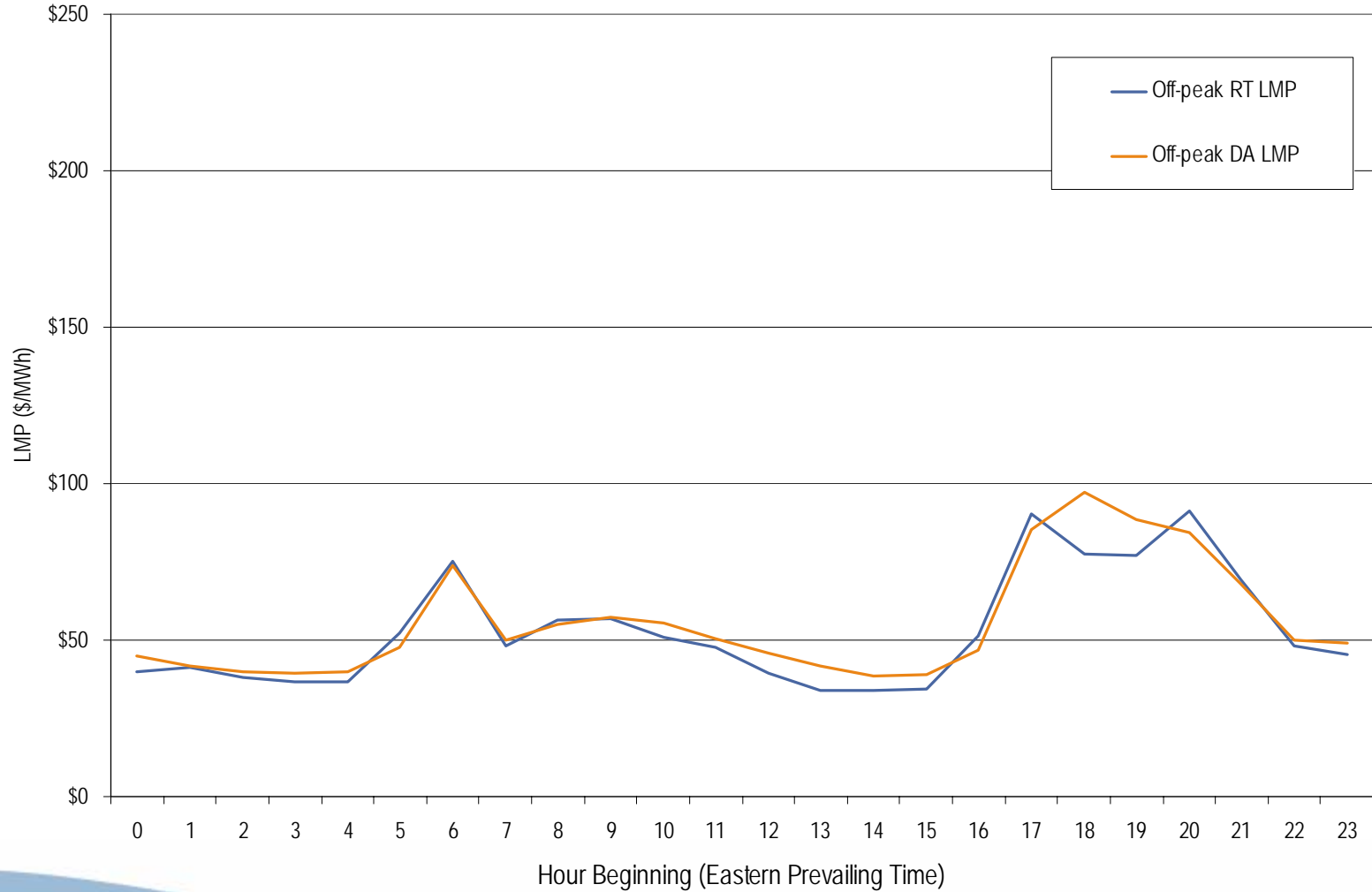


## ComEd day-ahead peak and off-peak average daily LMP December 2005

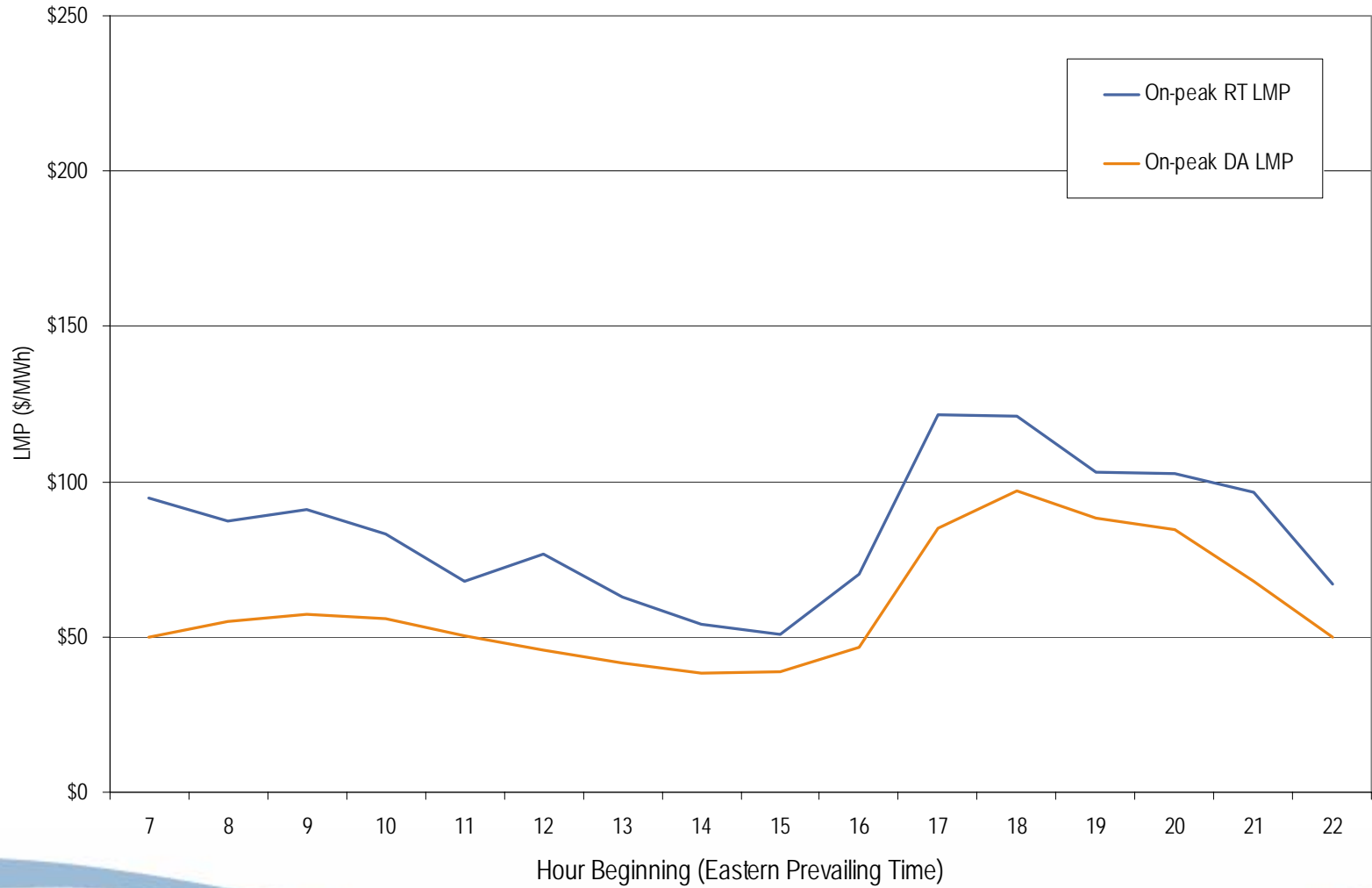




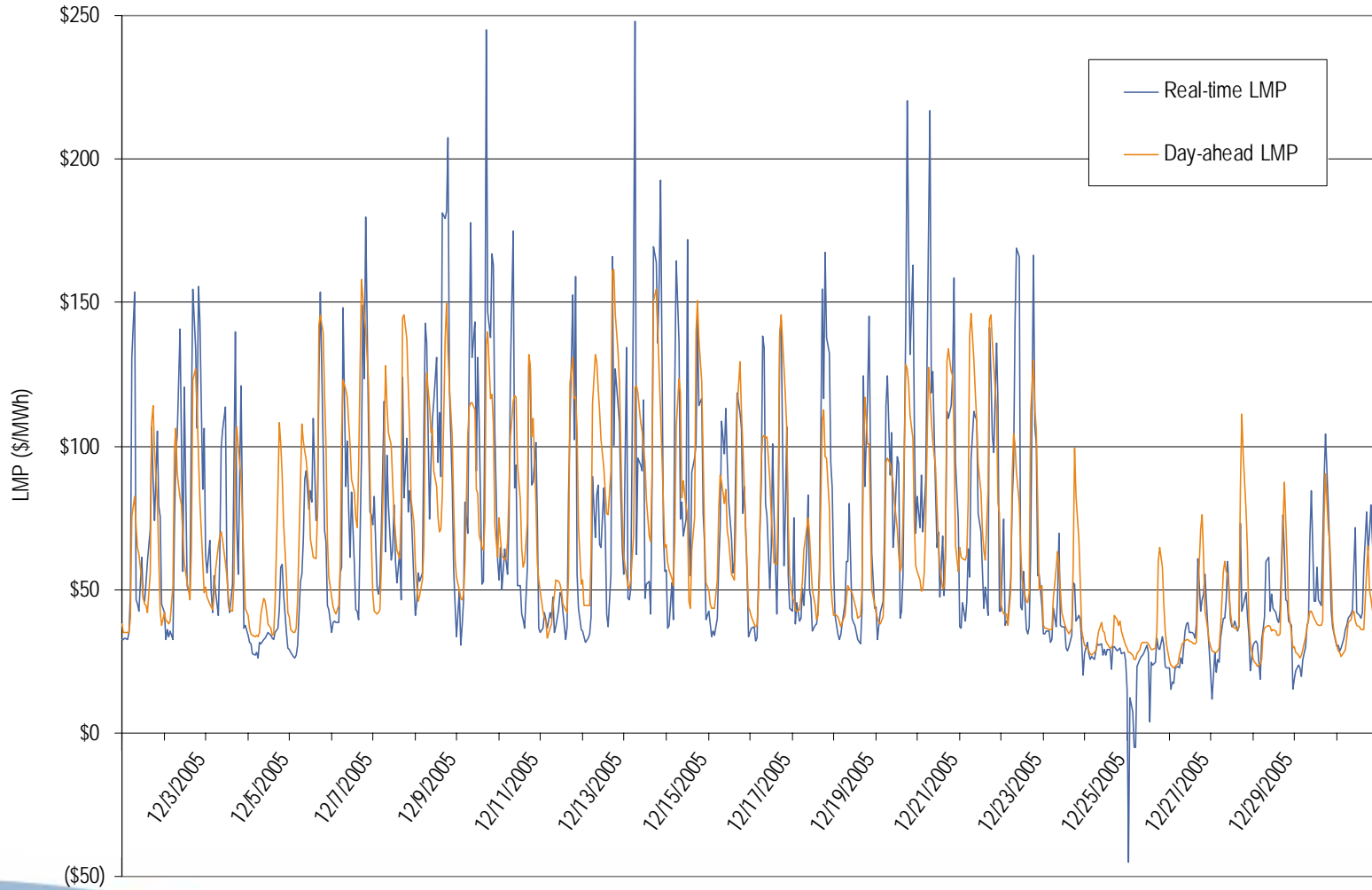
## ComEd real-time and day-ahead hourly average off-peak LMP December 2005



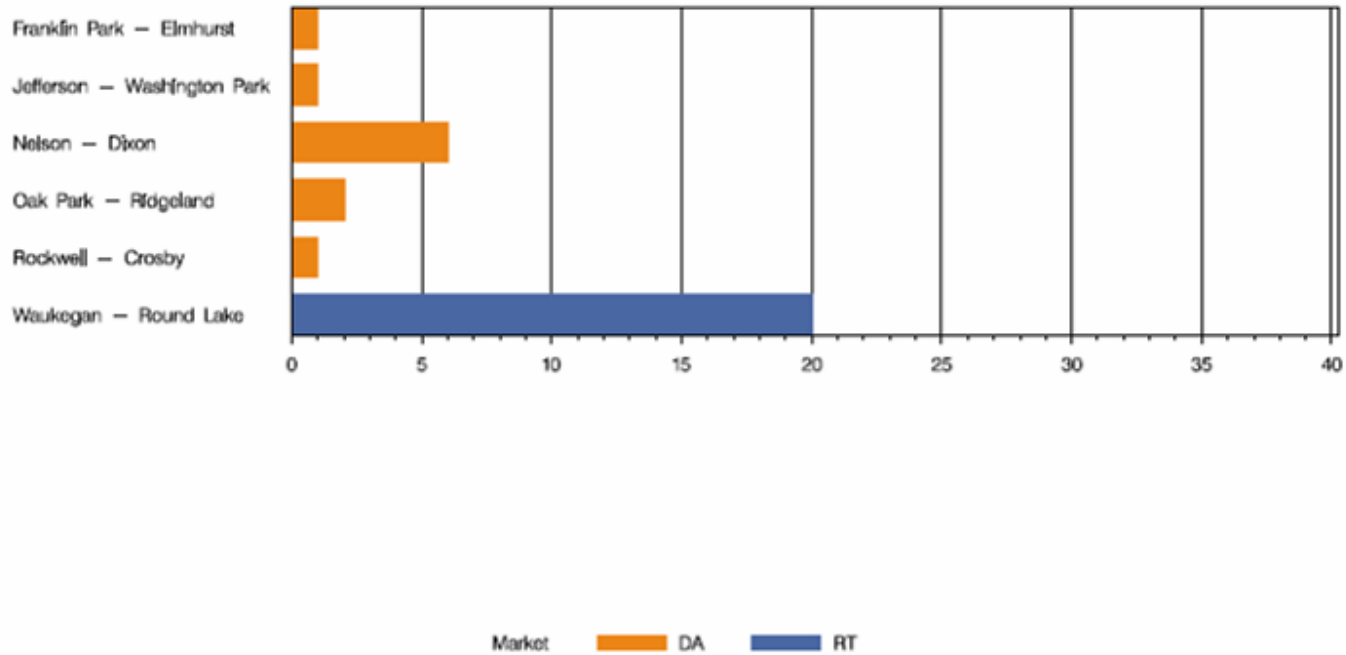
## ComEd real-time and day-ahead hourly average on-peak LMP December 2005



## ComEd real-time and day-ahead hourly zonal LMP December 2005



## COMED Congestion Event Hours by Facility December 2005



## Offer Capping for December 2005:

- There were 20 event hours of Real-Time congestion in ComEd in December.
  - There was 1 offer capped unit hour associated with this congestion.
- There were 11 event hours of Day-Ahead congestion in ComEd in December.
  - There were 100 offer capped unit hours associated with this congestion.

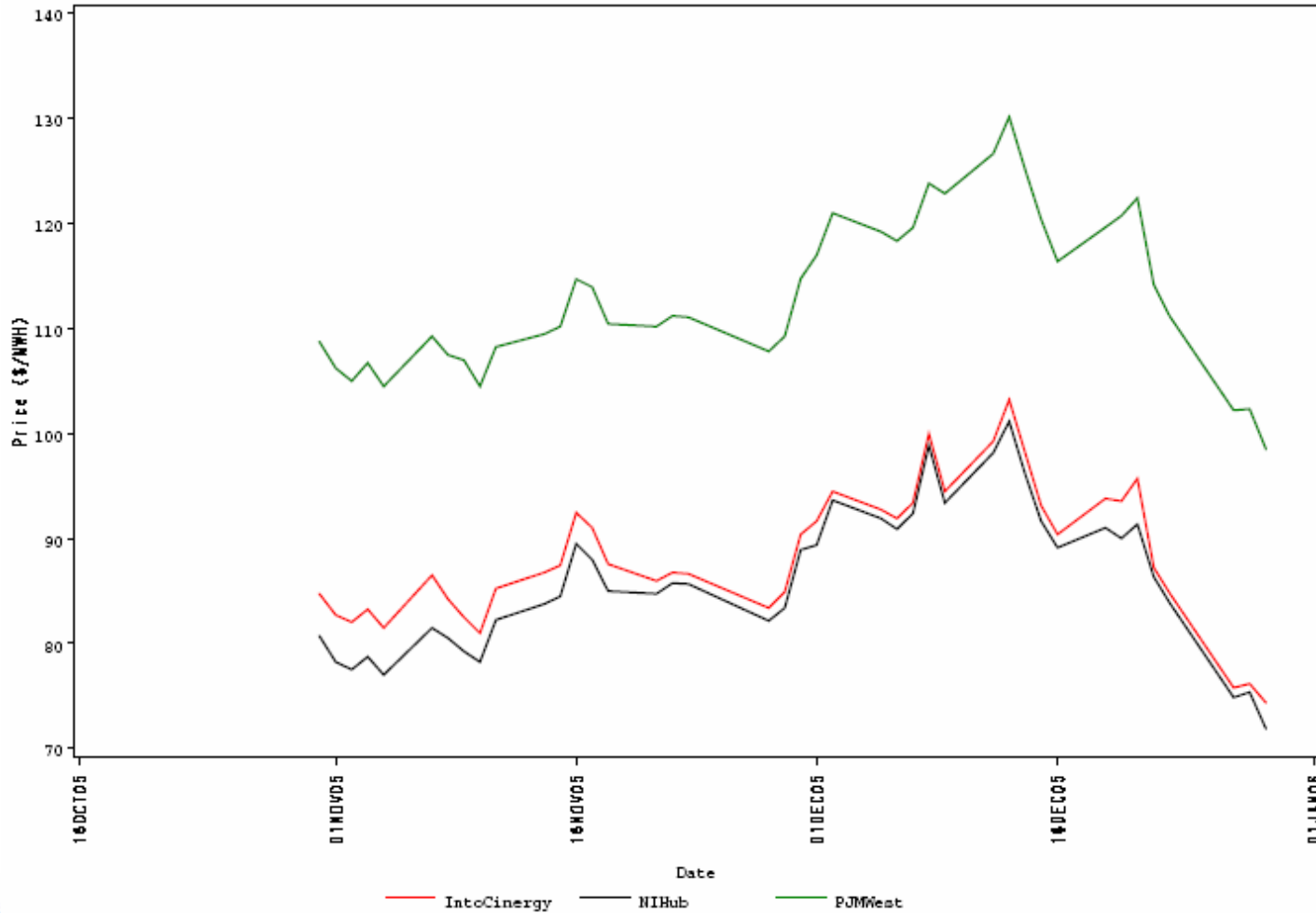
## ComEd Control Area TLRs called December 2005

FGID	Description	Events	Duration (Hr)	Highest Level
506	Nelson 345/138 kV xfmr 84 l/o Nelson 345/138 xfmr 82	1	6.8	3a
3264	Nelson-Nelson RT FLO Nelson-Dixon B	1	2.1	3a

- Forward prices for the January 2006 contract showed varying spreads during December.
  - Spreads reflect traders' expectations about future prices.
  - The maximum NIHub-CINergy spread was  $-\$0.80$  per MWh during December.
  - The minimum NIHub-CINergy spread was  $-\$4.35$  per MWh during December.
  - The average NIHub-CINergy spread was  $-\$1.64$  per MWh during December.
  - The NIHub-CINergy spread was  $-\$2.50$  per MWh on the final trading day for the January 2006 contract.

### Cinergy, NIHub and PJM West Forward Prices

contract=Jan2006





- Forward prices for the February 2006 contract showed varying spreads during December.
  - Spreads reflect traders' expectations about future prices.
  - The maximum NIHub-CINergy spread was -\$1.00 per MWh during December.
  - The minimum NIHub-CINergy spread was -\$4.55 per MWh during December.
  - The average NIHub-CINergy spread was -\$2.42 per MWh during December.
  - The NIHub-CINergy spread was -\$3.25 per MWh on the final trading day of December for the February 2006 contract.

## Cinergy, NIHub and PJM West Forward Prices

contract-Feb2006

