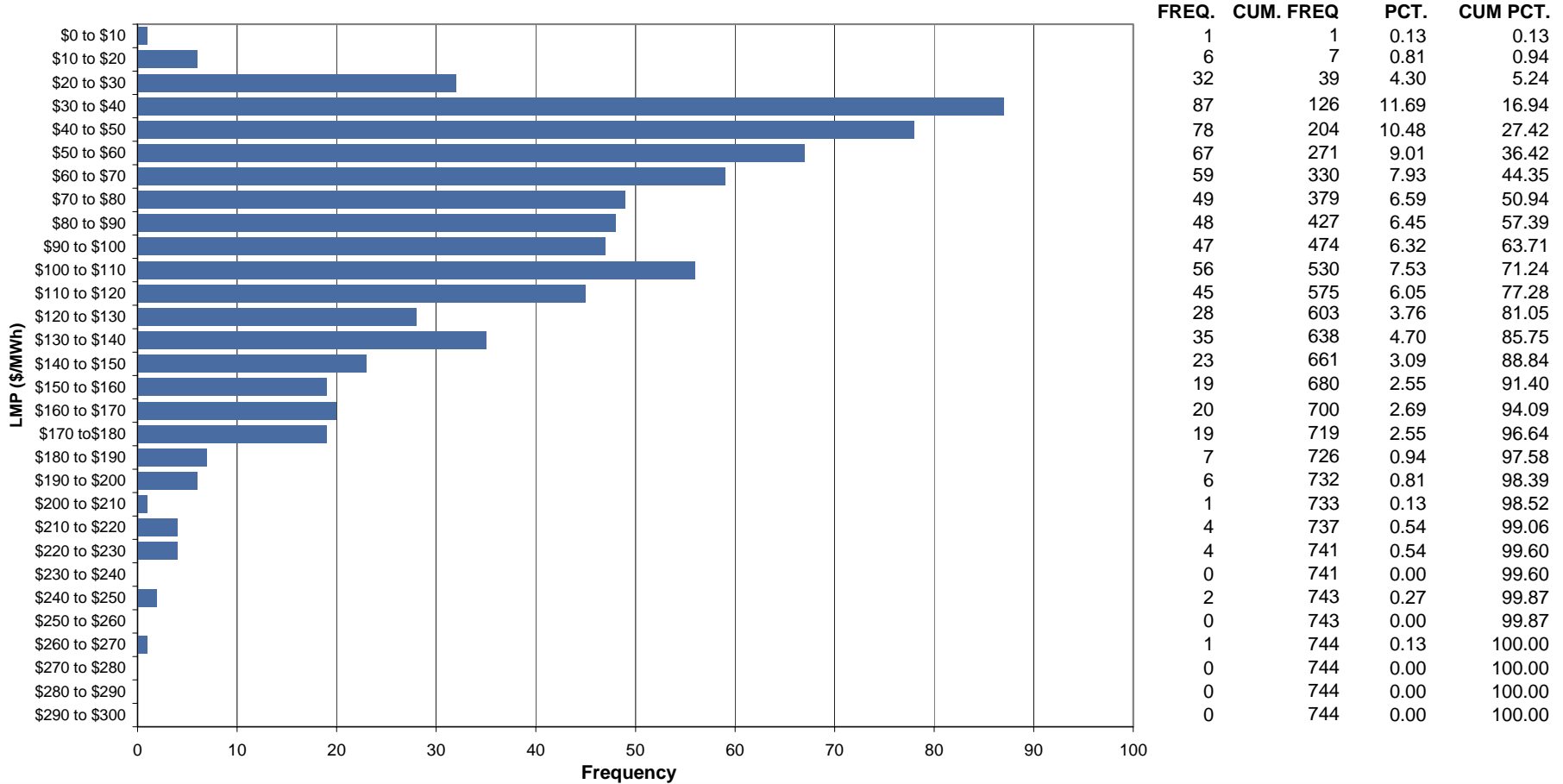




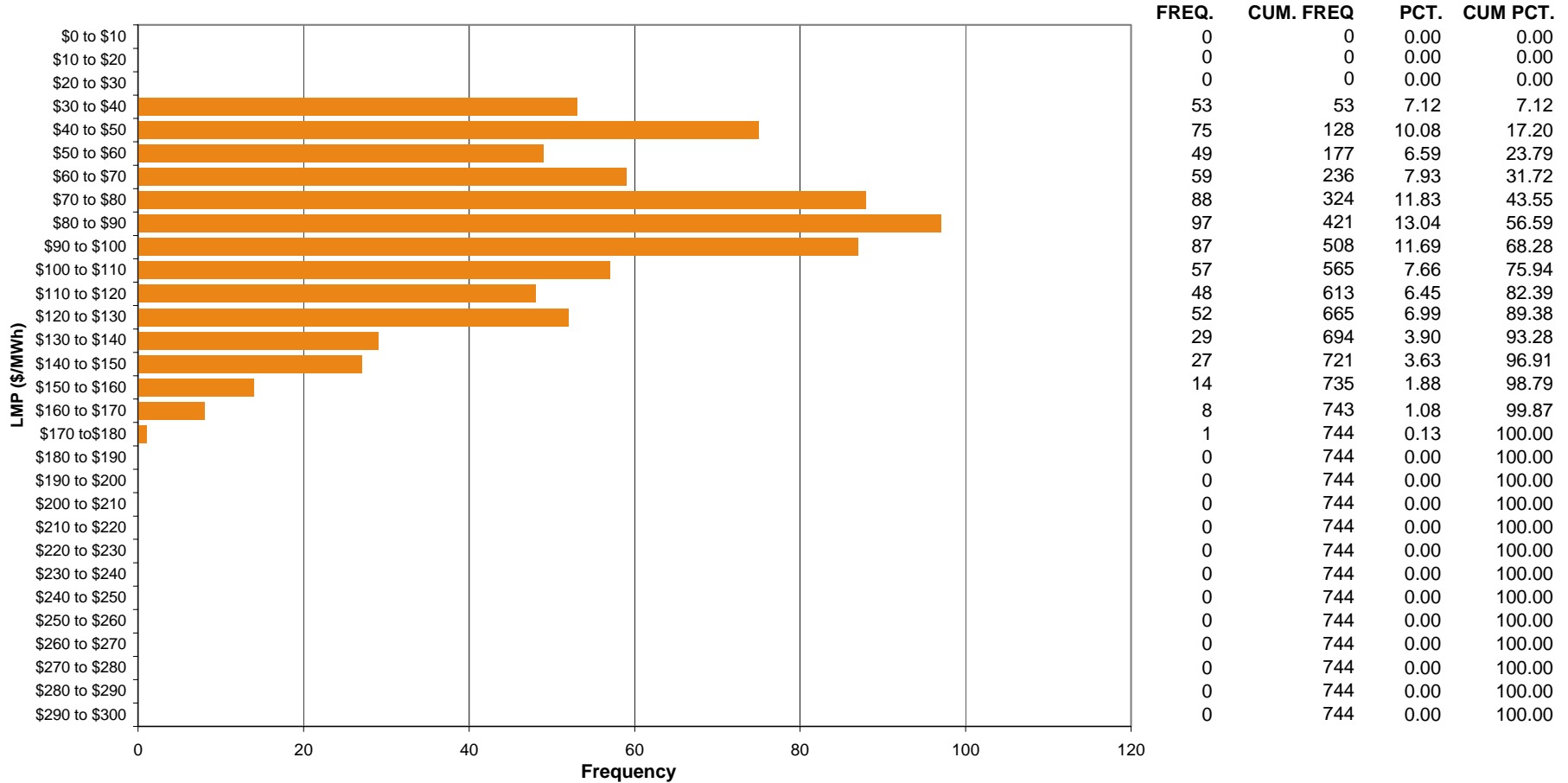
Dominion Control Zone Market Monitoring Report for December 2005

Market Monitoring Unit
January 2006

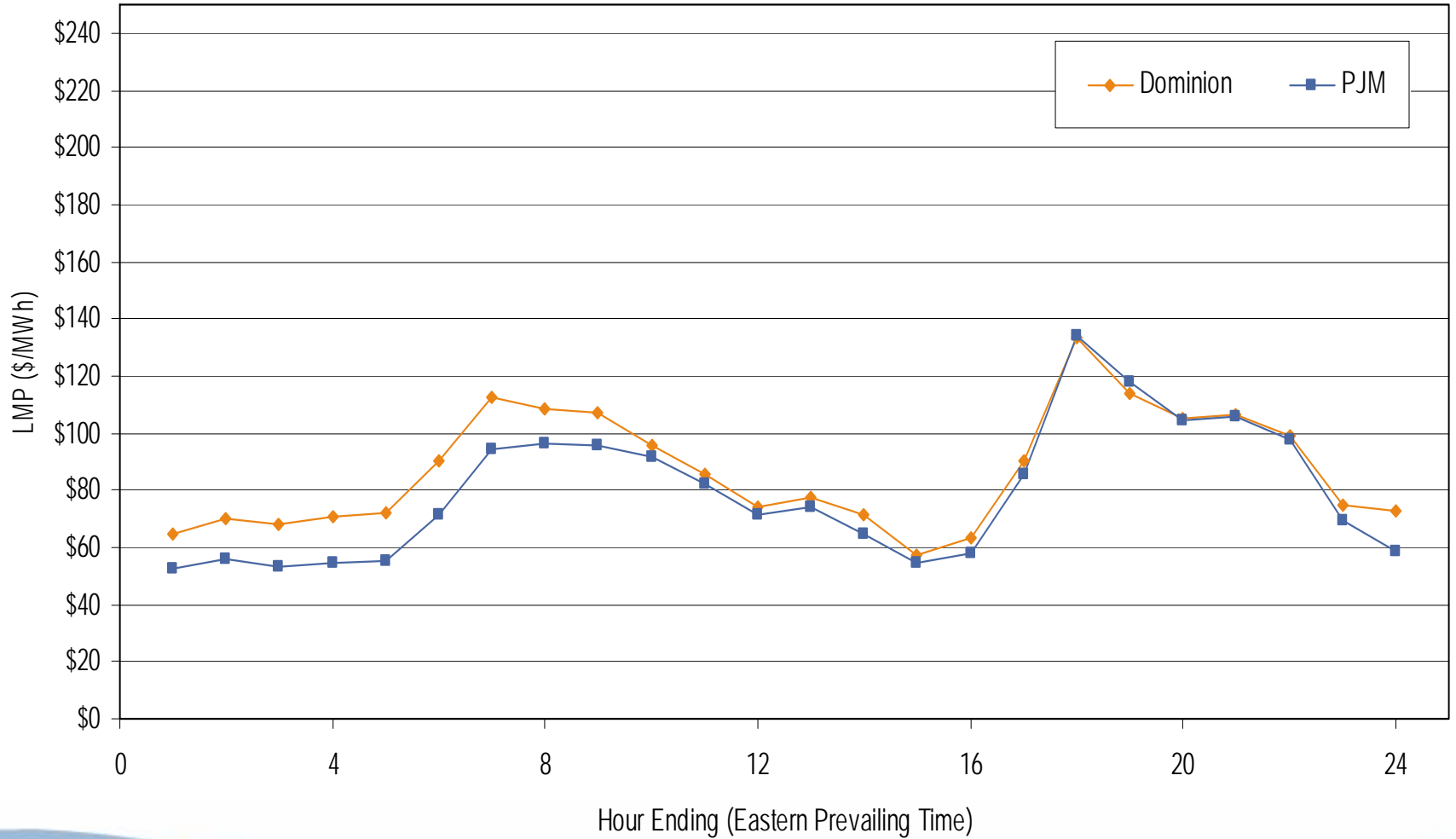
Frequency Distribution by Hours of Dominion Real-time LMP December 2005



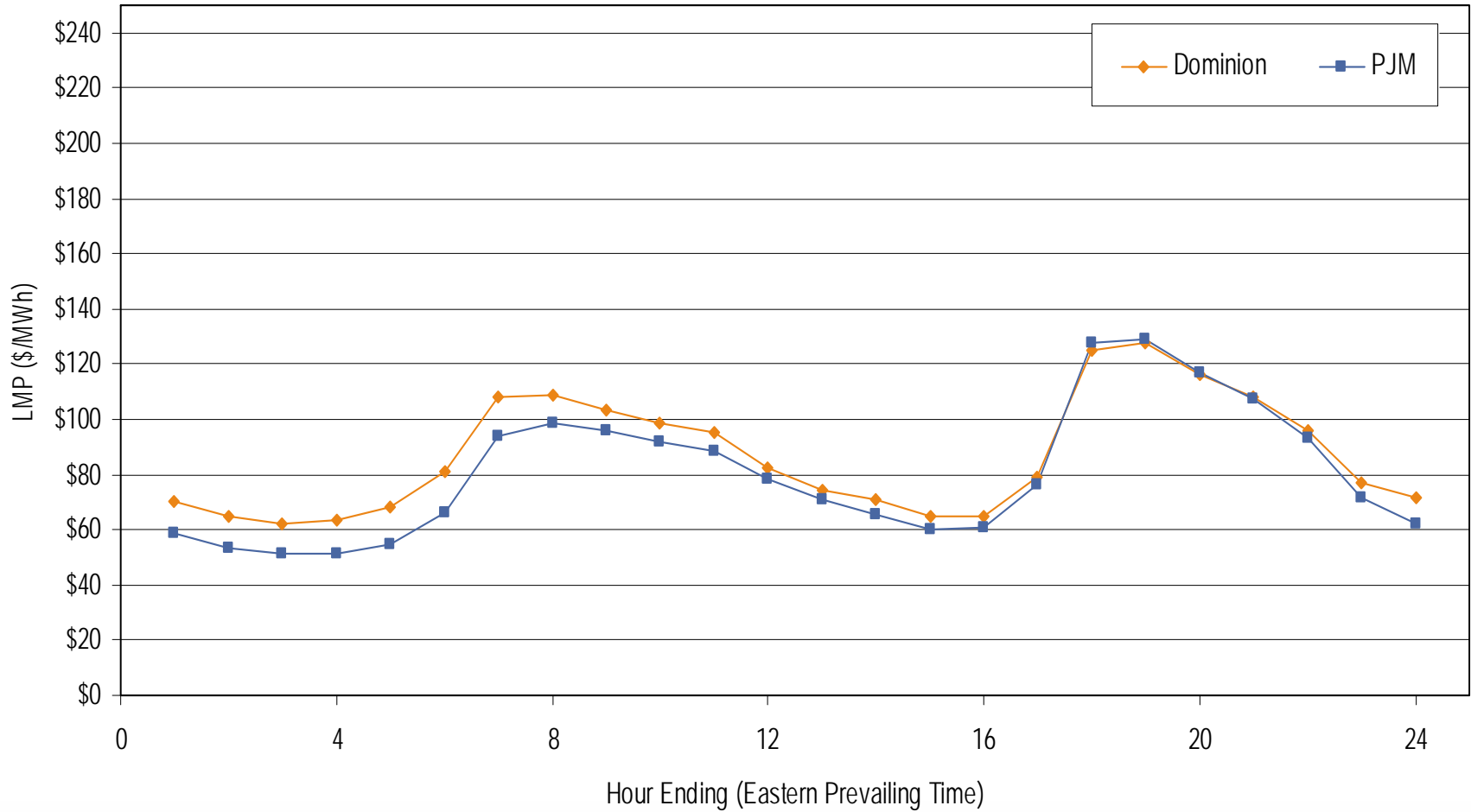
Frequency Distribution by Hours of Dominion Day-ahead LMP December 2005



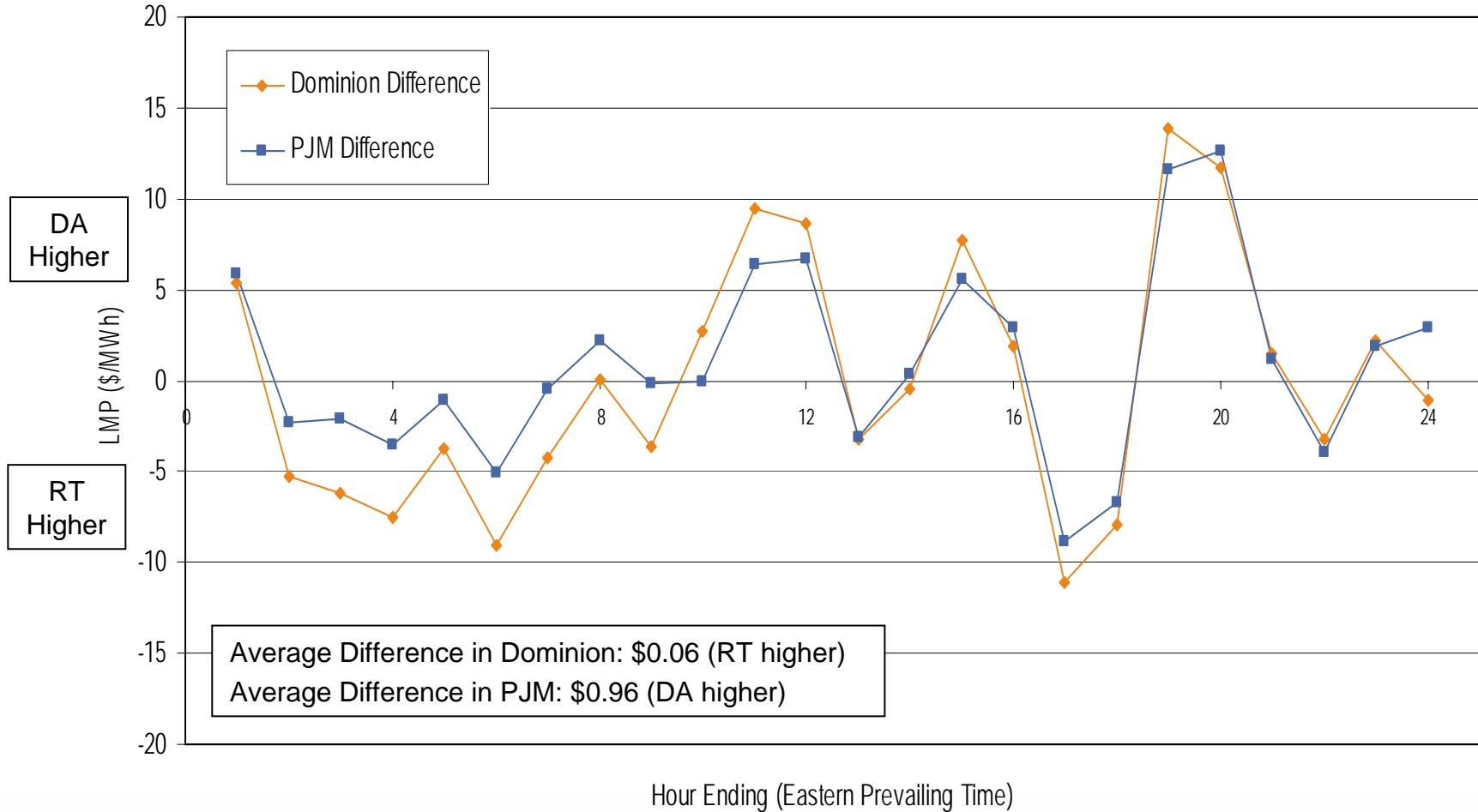
Average Hourly Real-Time LMP December 2005



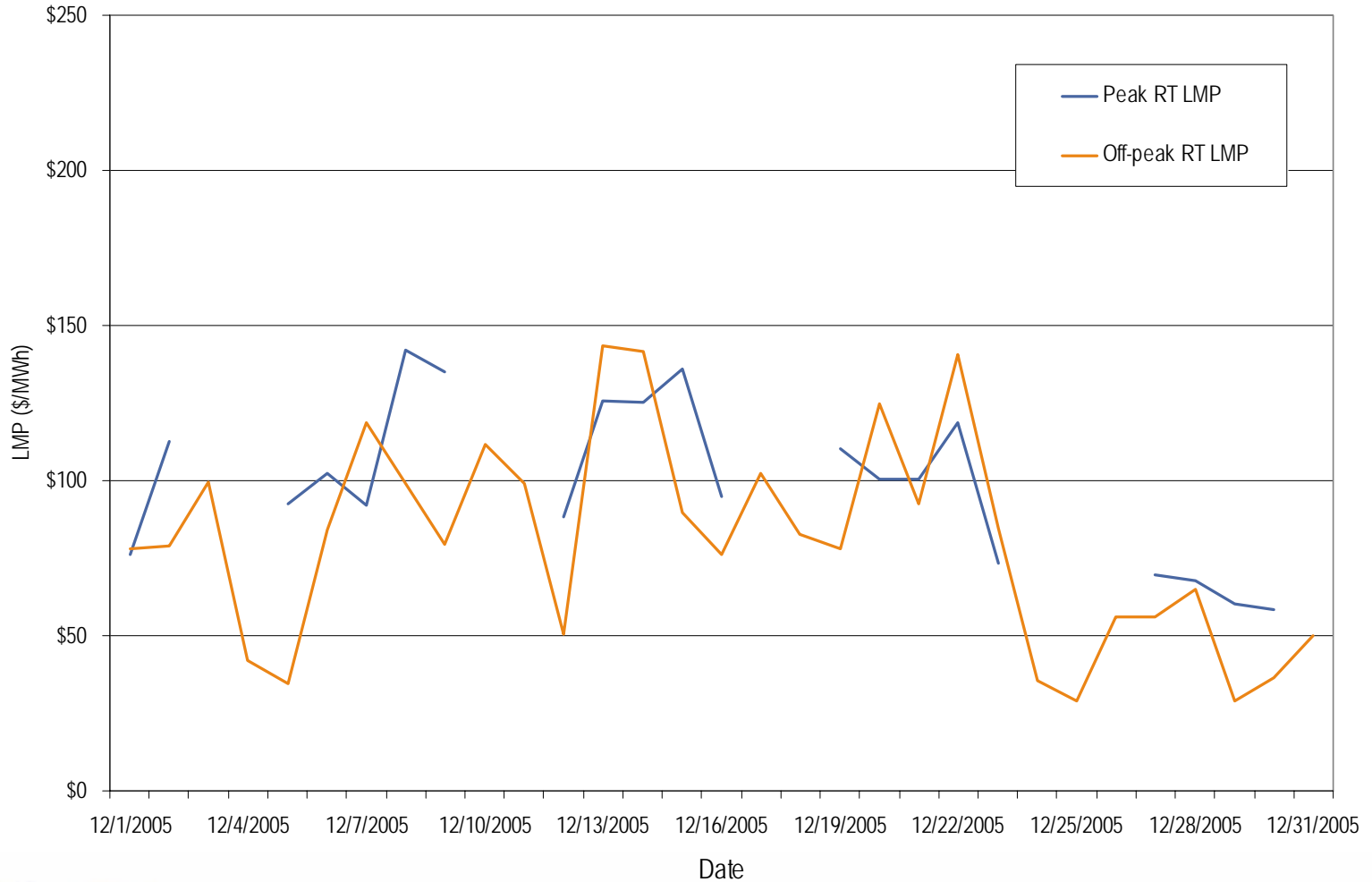
Average Hourly Day-Ahead LMP December 2005



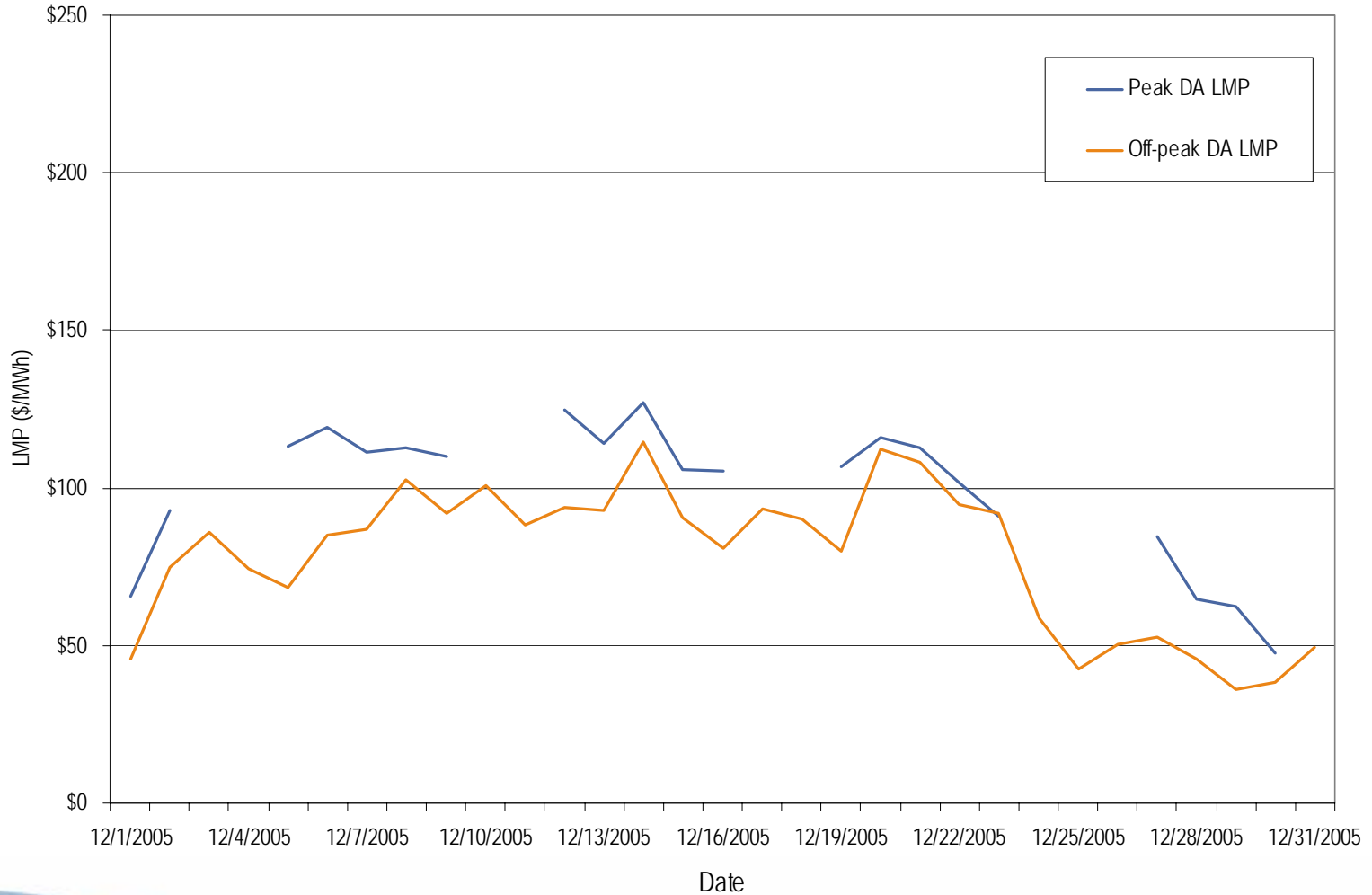
Average Hourly Difference of Day-Ahead and Real-Time LMPs December 2005



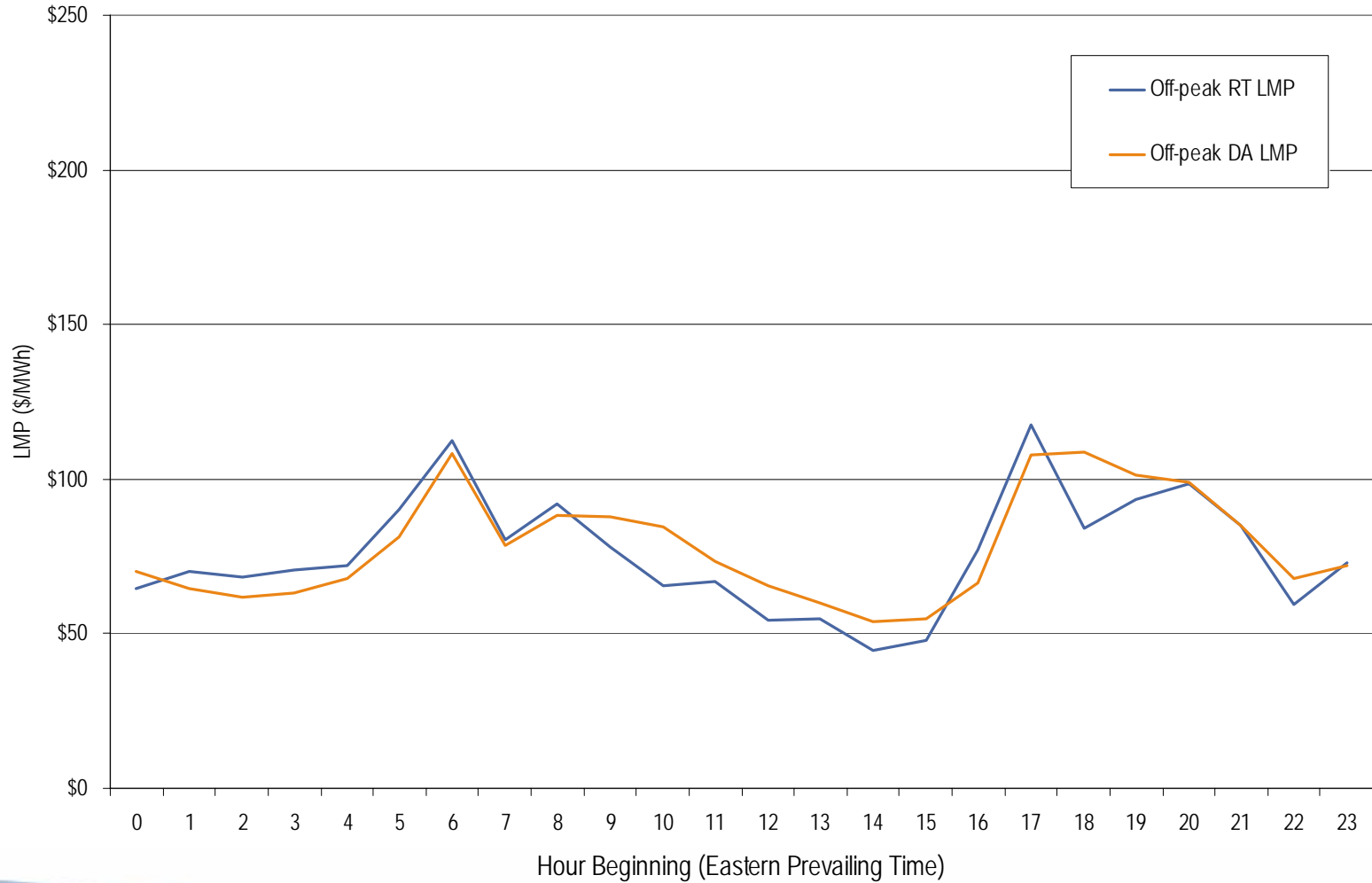
Dominion real-time peak and off-peak average daily LMP December 2005



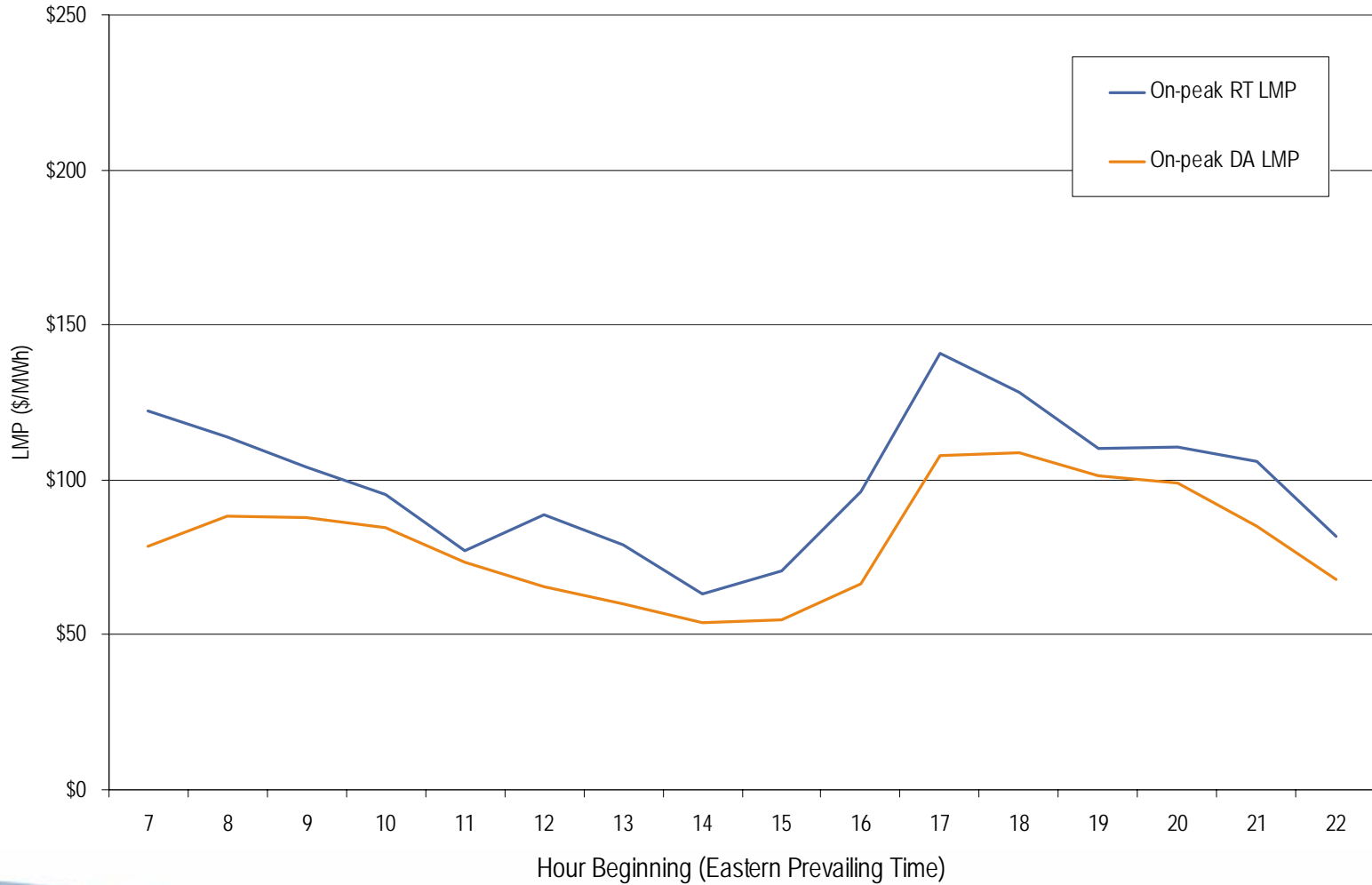
Dominion day-ahead peak and off-peak average daily LMP December 2005



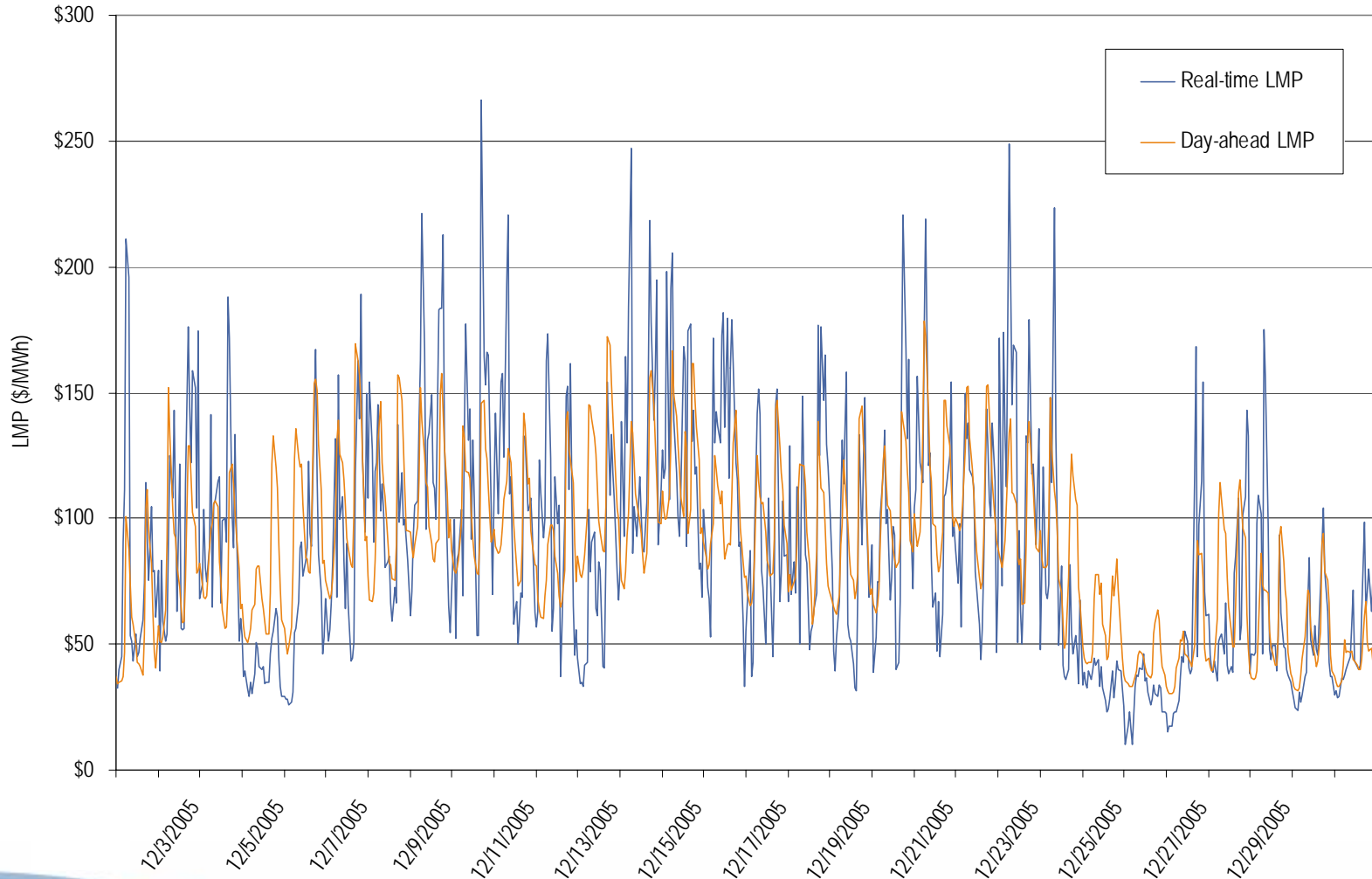
Dominion real-time and day-ahead hourly average off-peak LMP December 2005



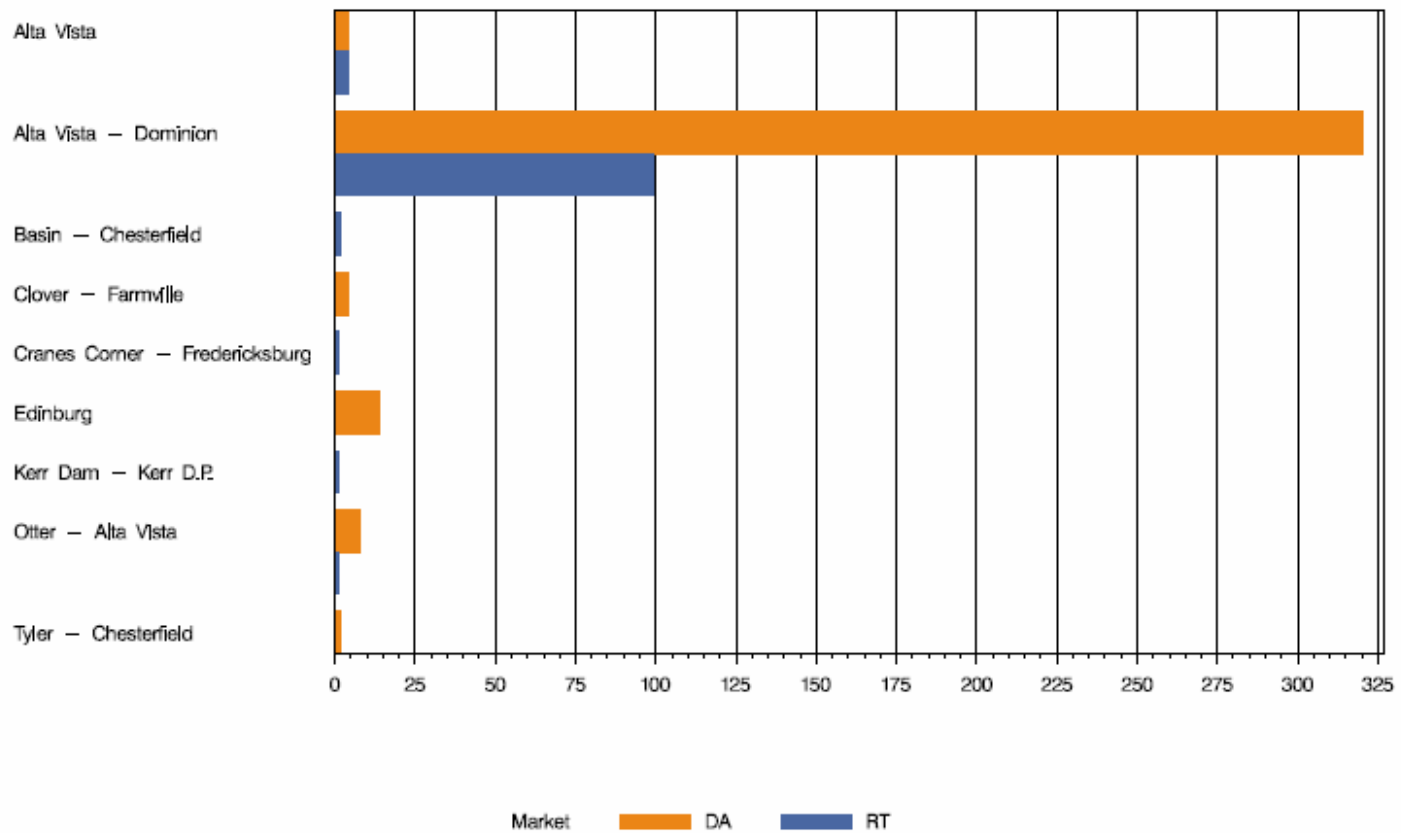
Dominion real-time and day-ahead hourly average on-peak LMP December 2005



Dominion real-time and day-ahead hourly zonal LMP December 2005



DOM Congestion Event Hours by Facility December 2005



Offer Capping for December 2005:

- There were 108 event hours of Real-Time congestion in Dominion in December.
 - There were 45 offer capped unit hours associated with this congestion.
- There were 352 event hours of Day-Ahead congestion in Dominion in December.
 - There was no offer capping associated with this congestion.