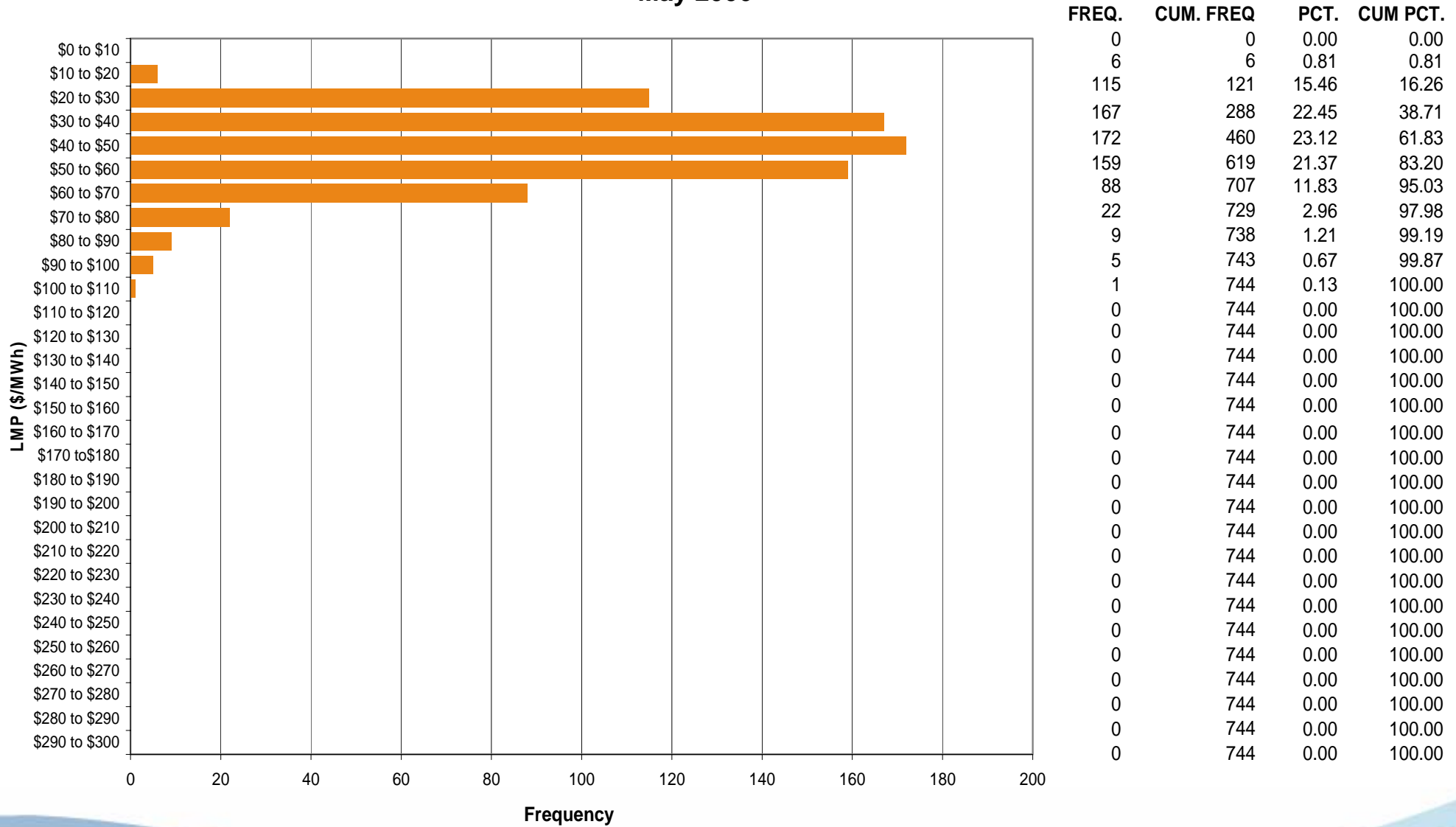




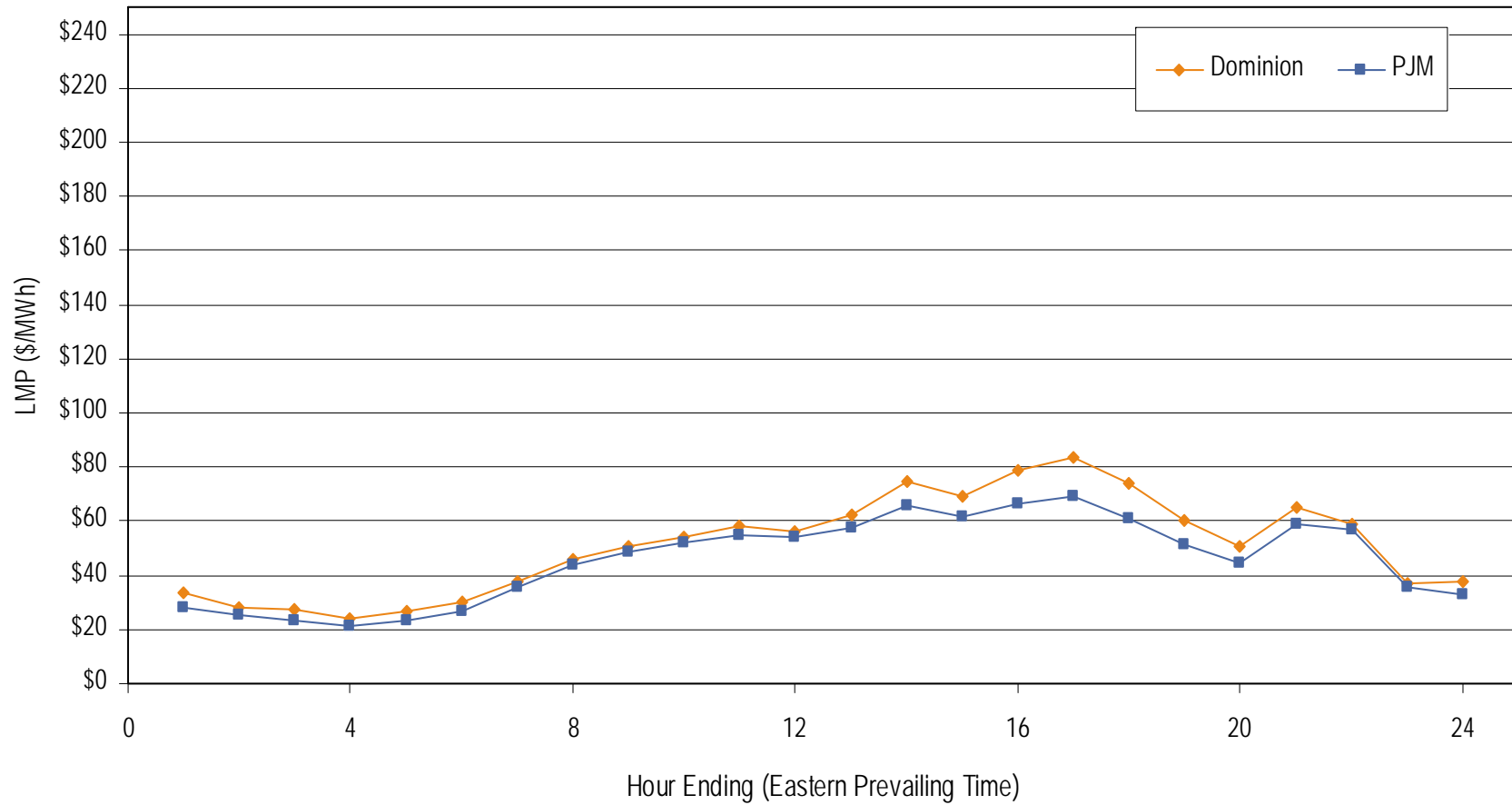
Dominion Control Zone Market Monitoring Report for May 2006

Market Monitoring Unit
June 2006

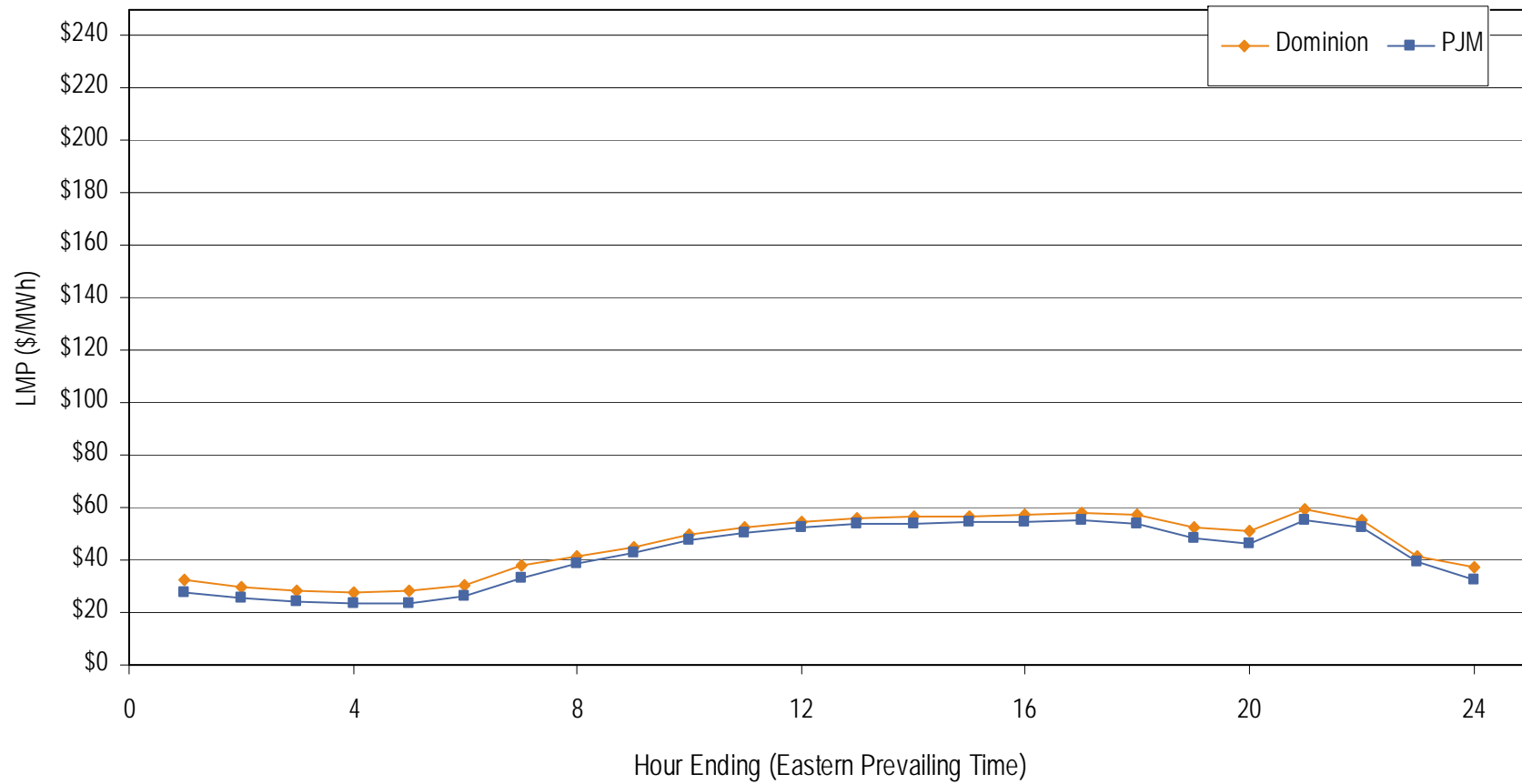
Frequency distribution by hours of Dominion day-ahead LMP May 2006



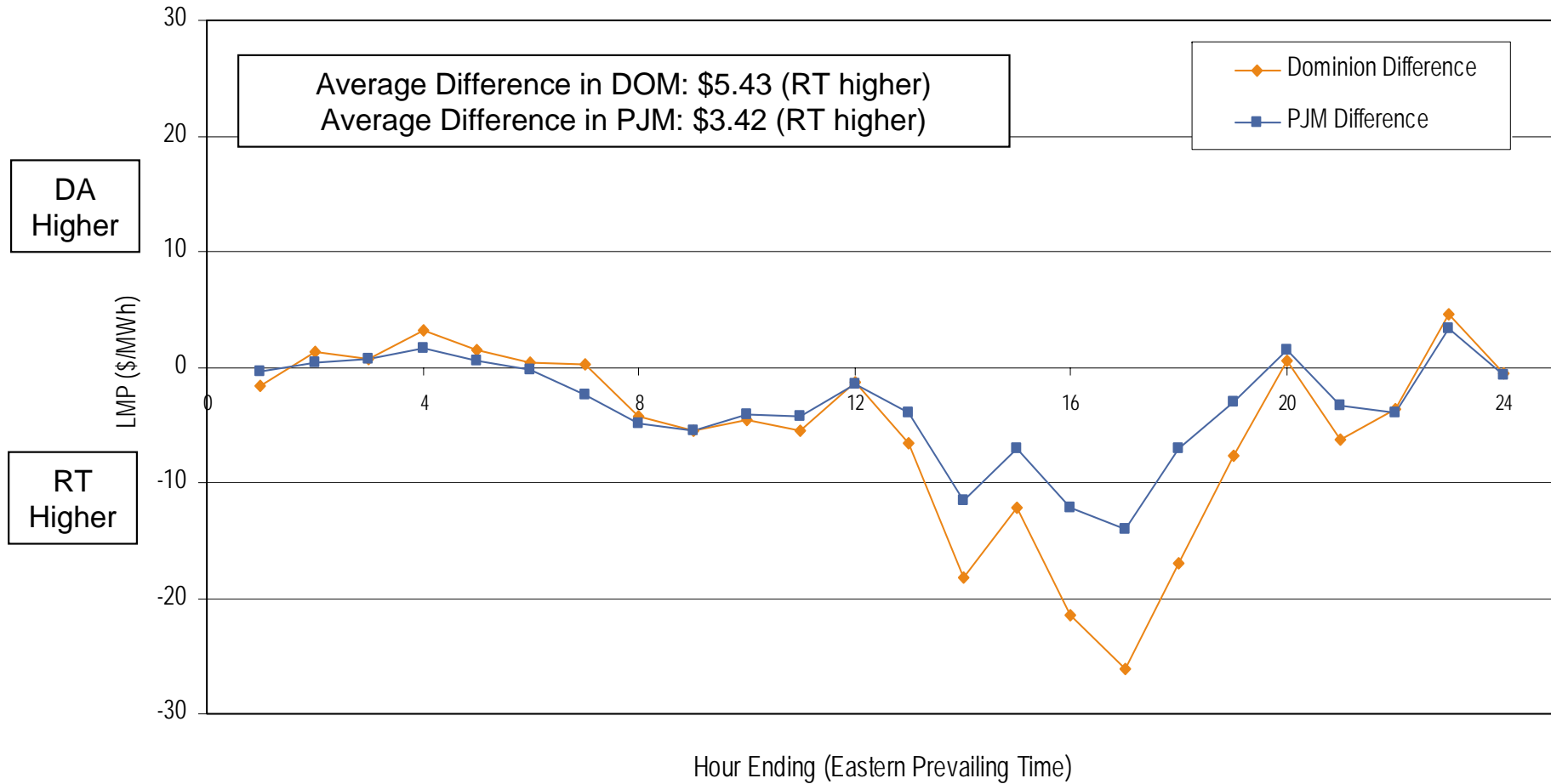
**Average Hourly Real-Time LMP
May 2006**



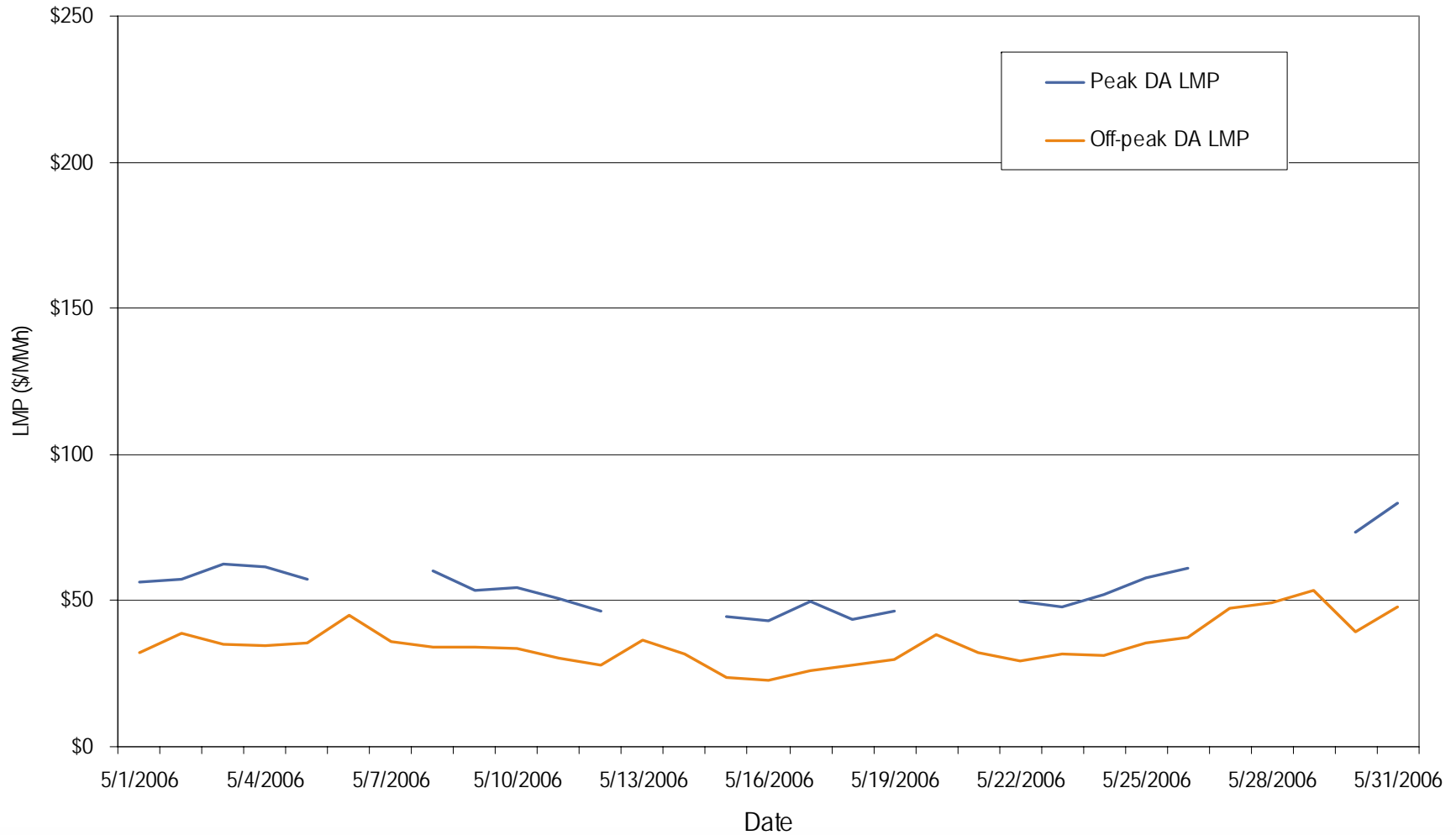
**Average Hourly Day-Ahead LMP
May 2006**



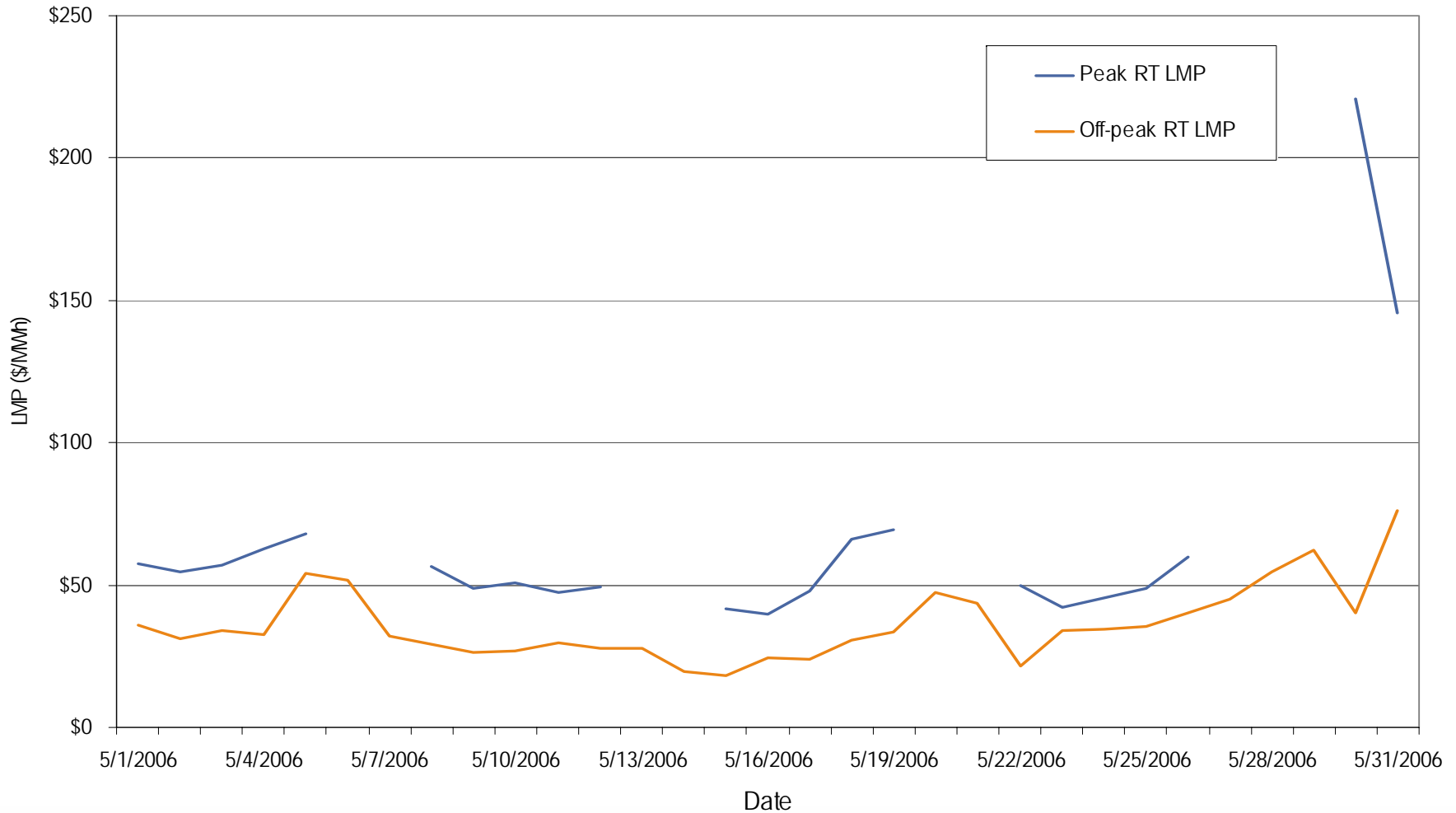
**Average Hourly Difference of Day-Ahead and Real-Time LMPs
May 2006**



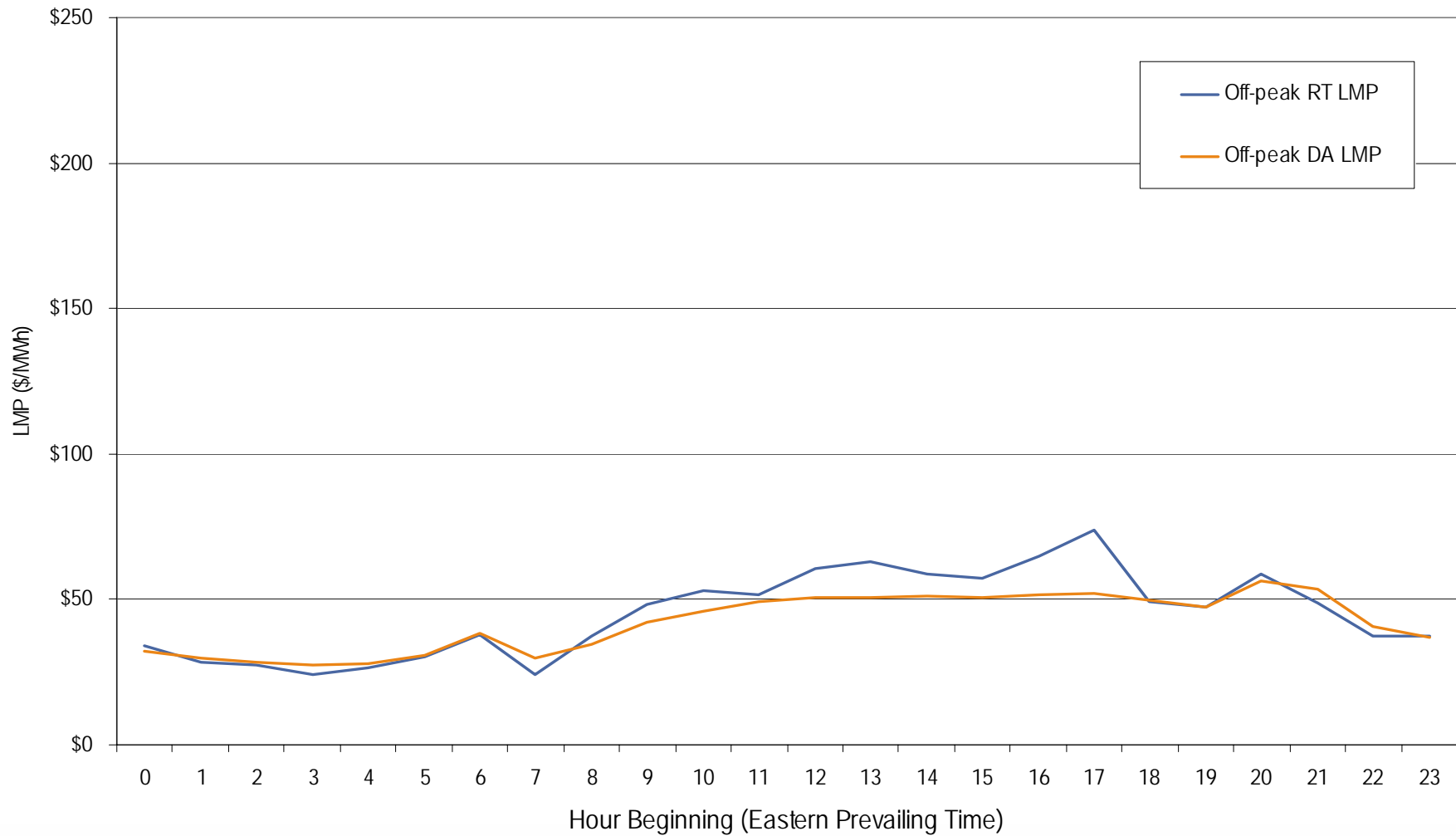
**Dominion day-ahead peak and off-peak average daily LMP
May 2006**



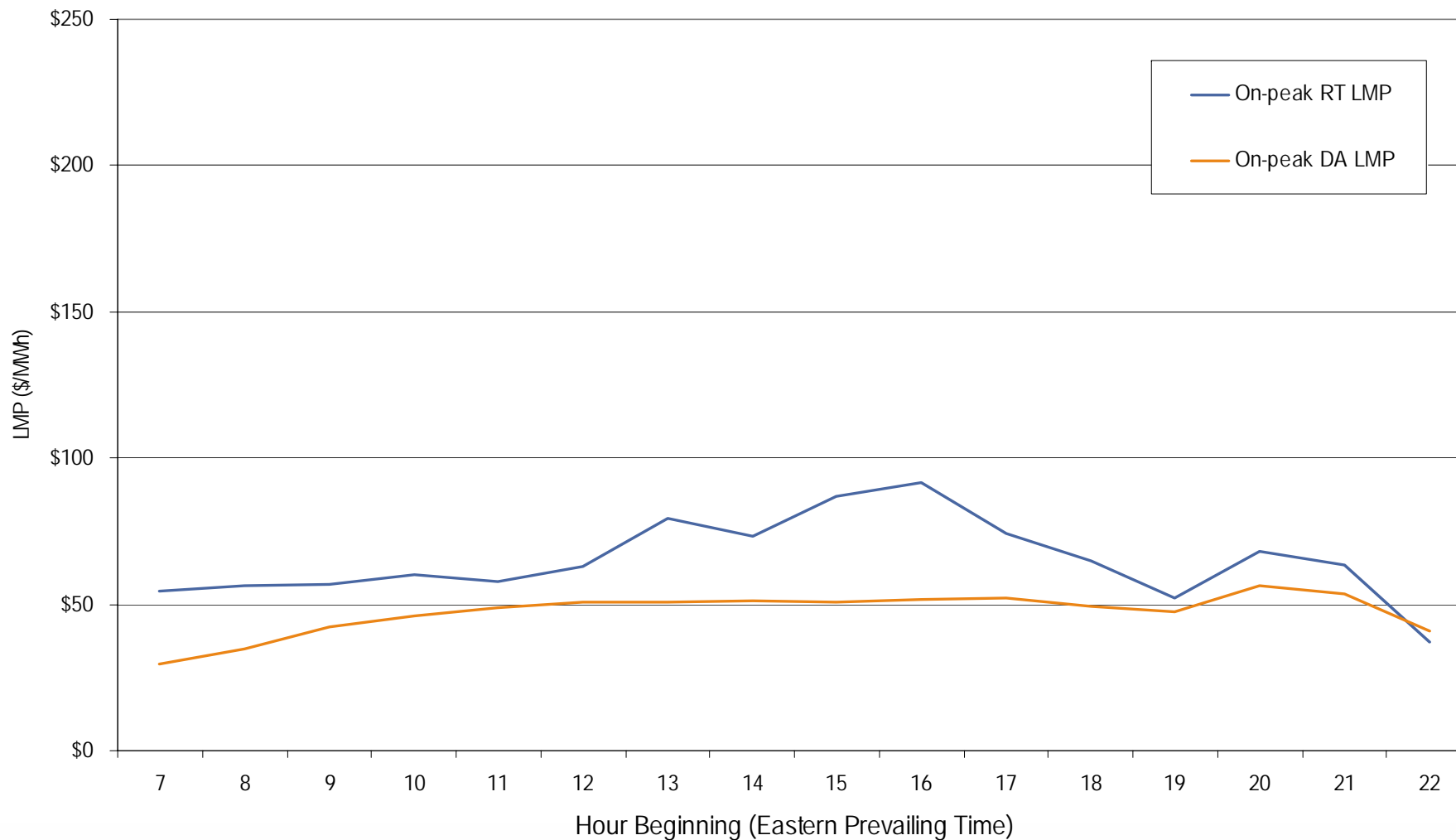
**Dominion real-time peak and off-peak average daily LMP
May 2006**



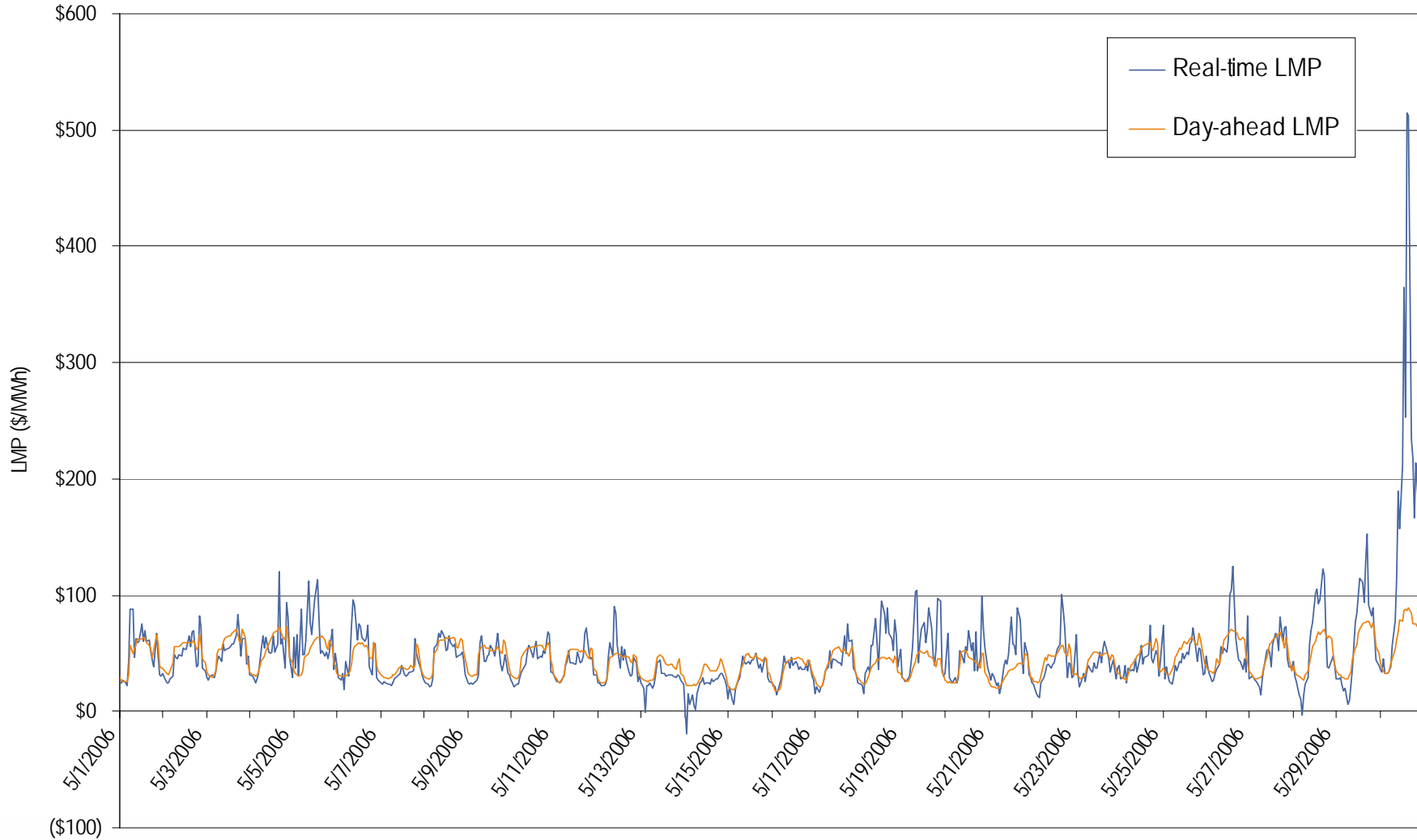
**Dominion real-time and day-ahead hourly average off-peak LMP
May 2006**



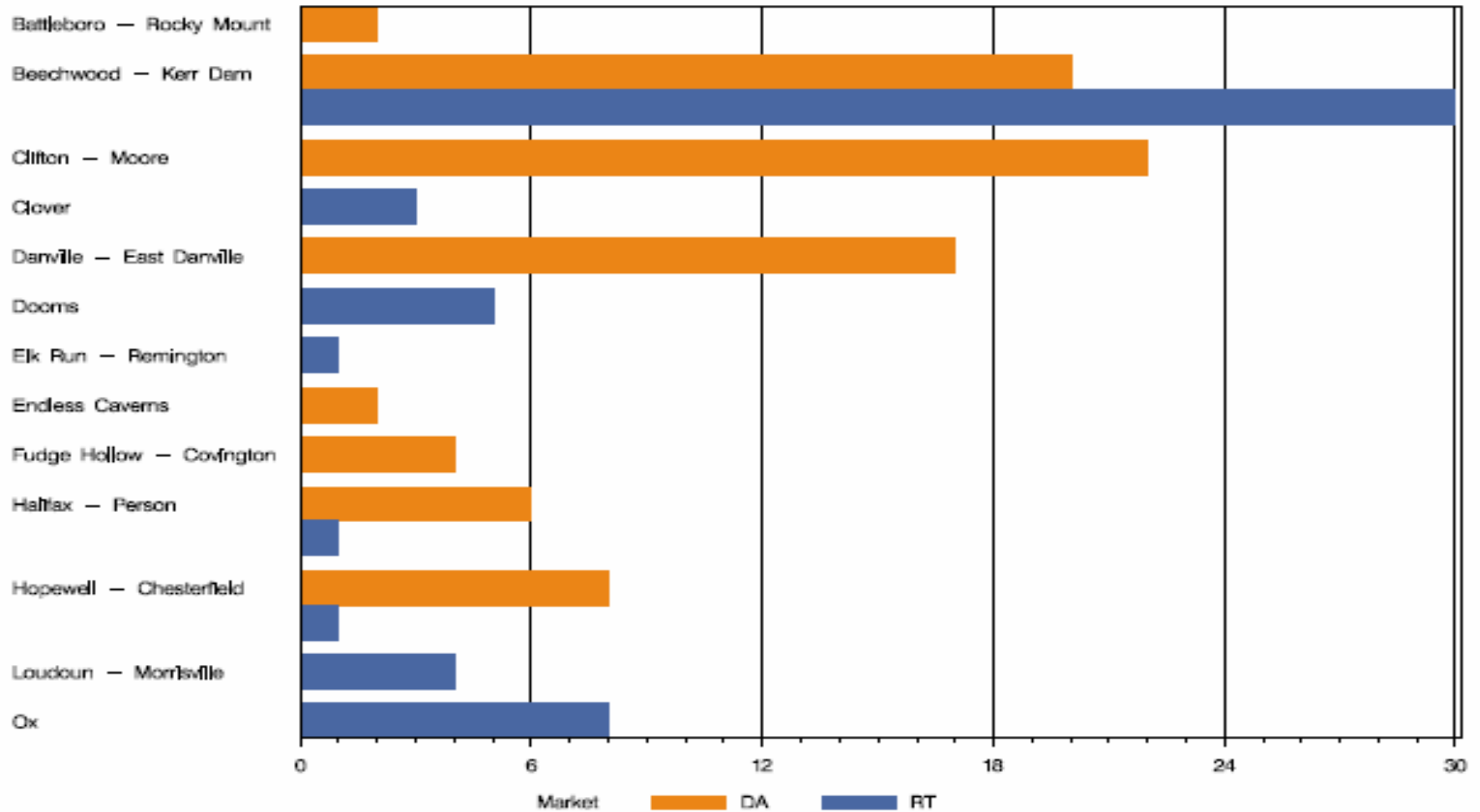
**Dominion real-time and day-ahead hourly average on-peak LMP
May 2006**



**Dominion real-time and day-ahead hourly zonal LMP
May 2006**



DOM Congestion Event Hours by Facility May 2006



Offer Capping for May 2006:

- There were 53 event hours of Real-Time congestion in Dominion in May.
 - There were 68 offer capped unit hours in Real-Time.
- There were 81 event hours of Day-Ahead congestion in Dominion in May.
 - There was no offer capping in Day-Ahead.