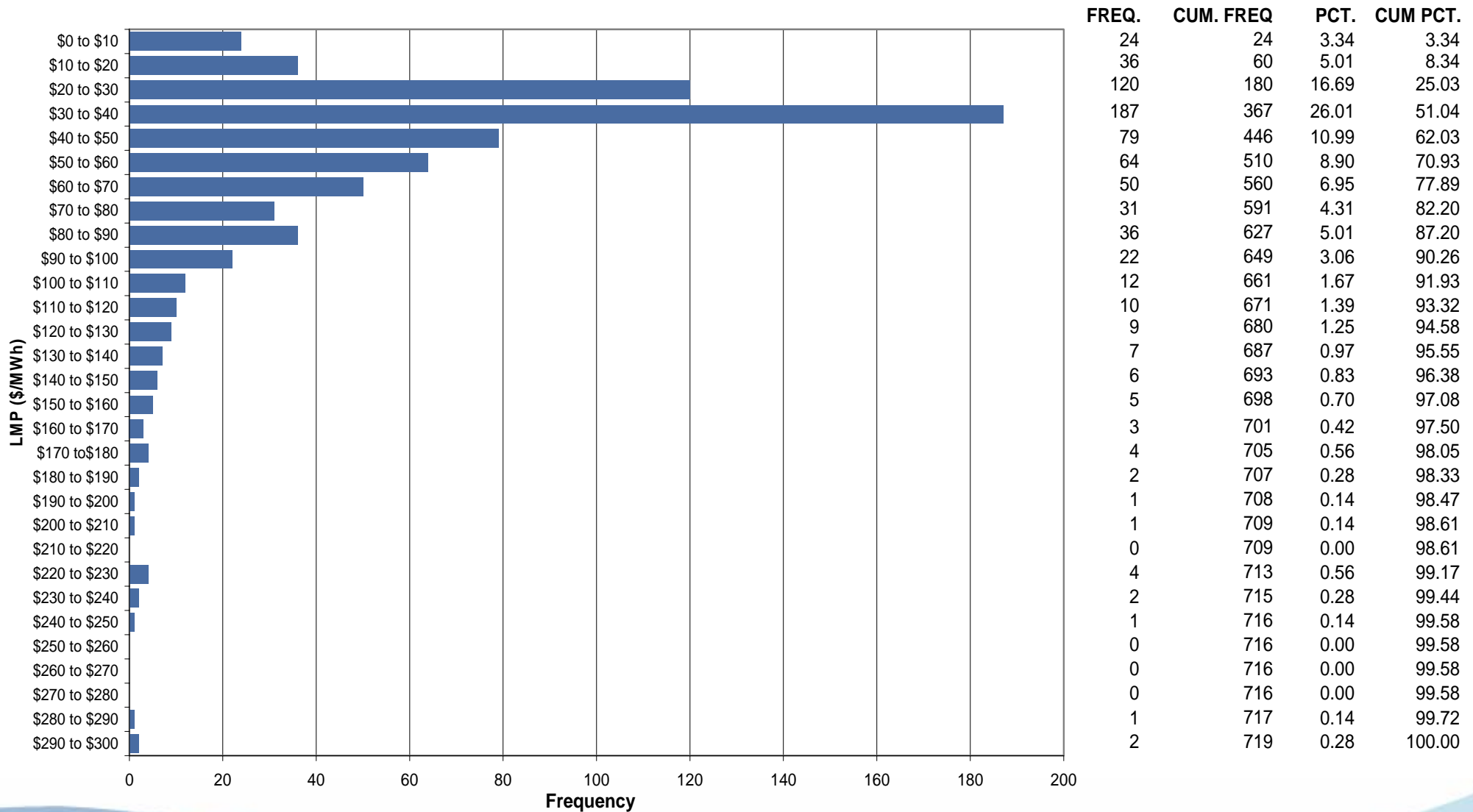




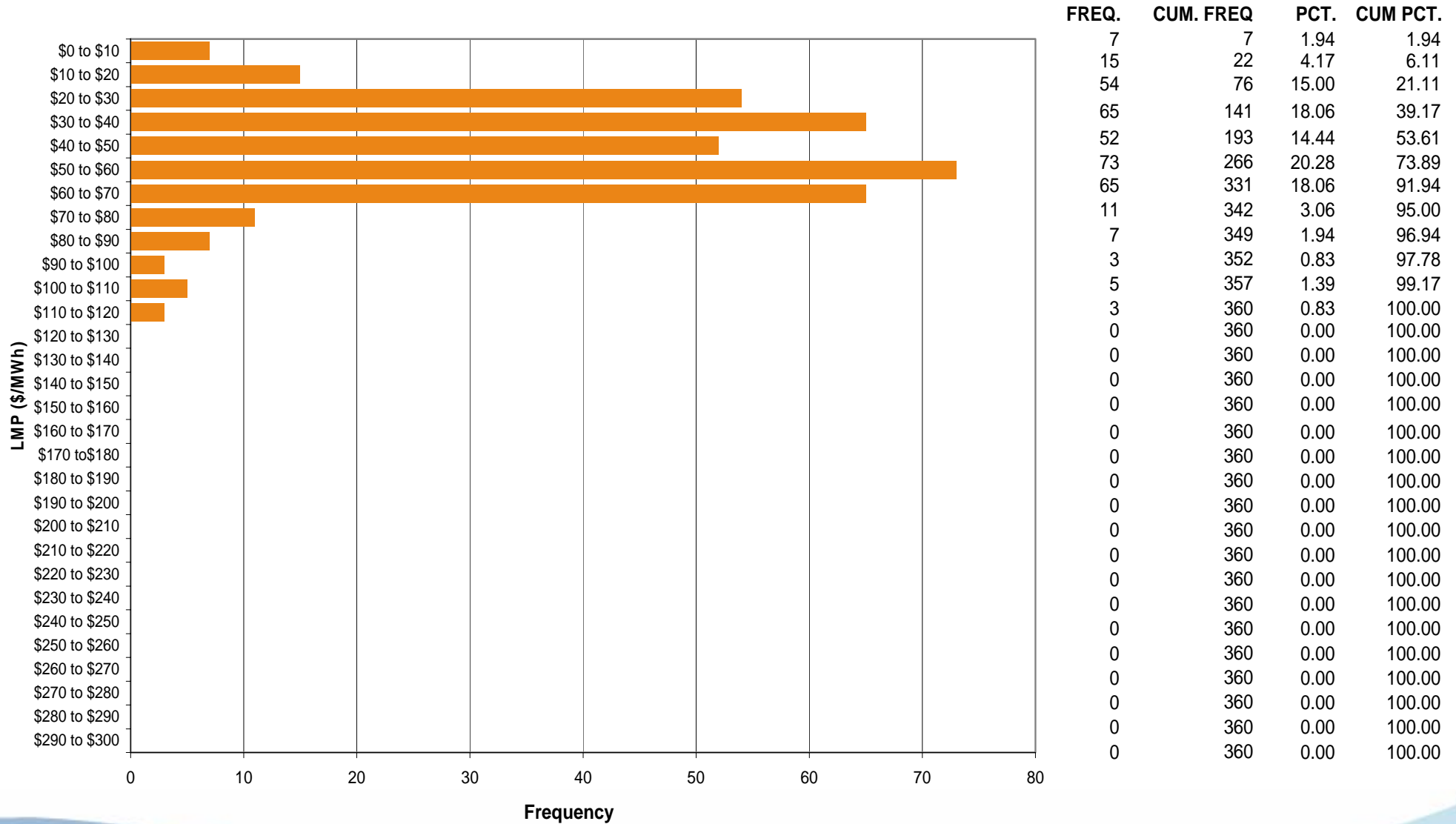
Dominion Control Zone Market Monitoring Report for June 2006

Market Monitoring Unit
July 2006

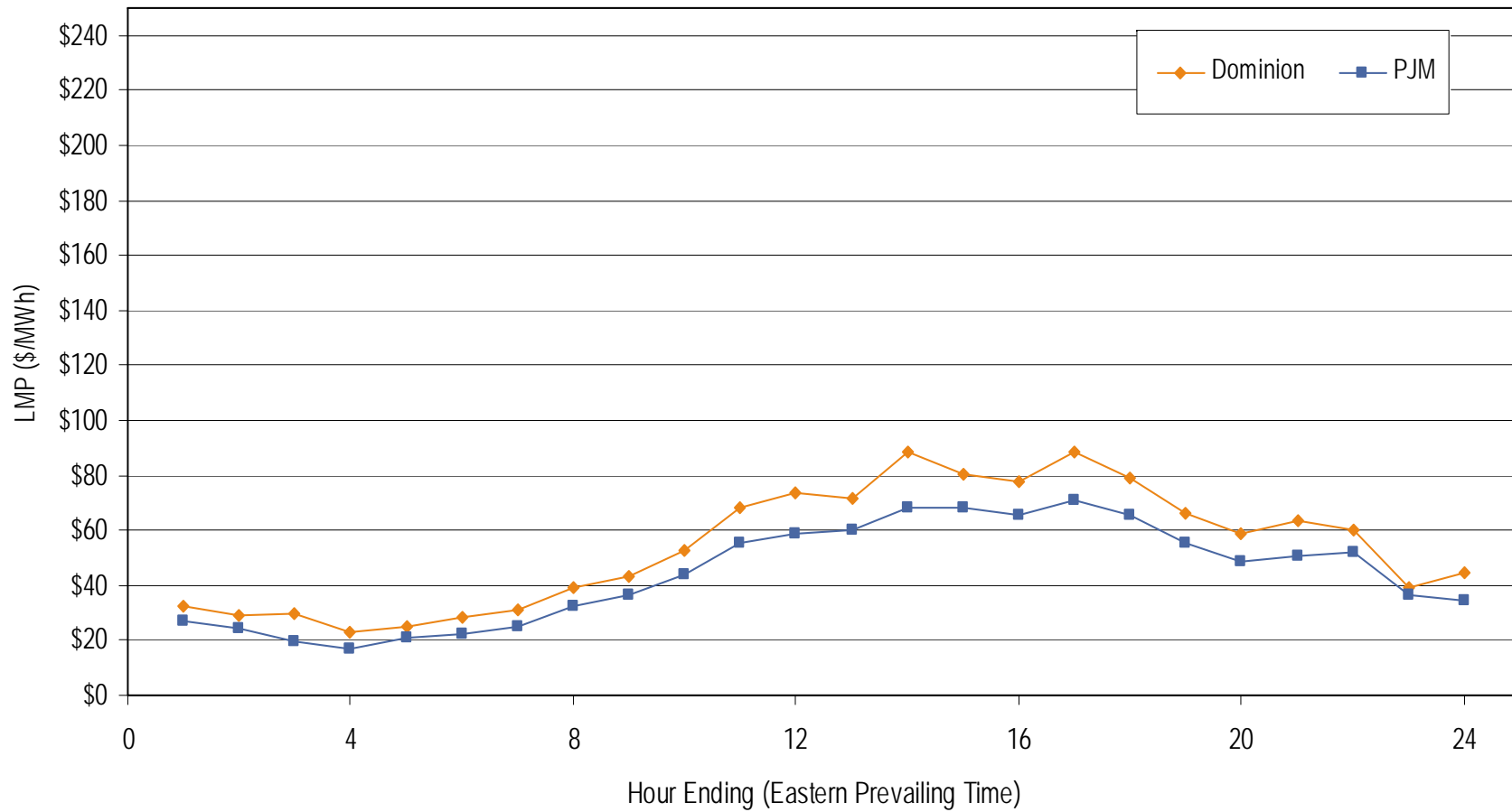
Frequency distribution by hours of Dominion real-time LMP June 2006



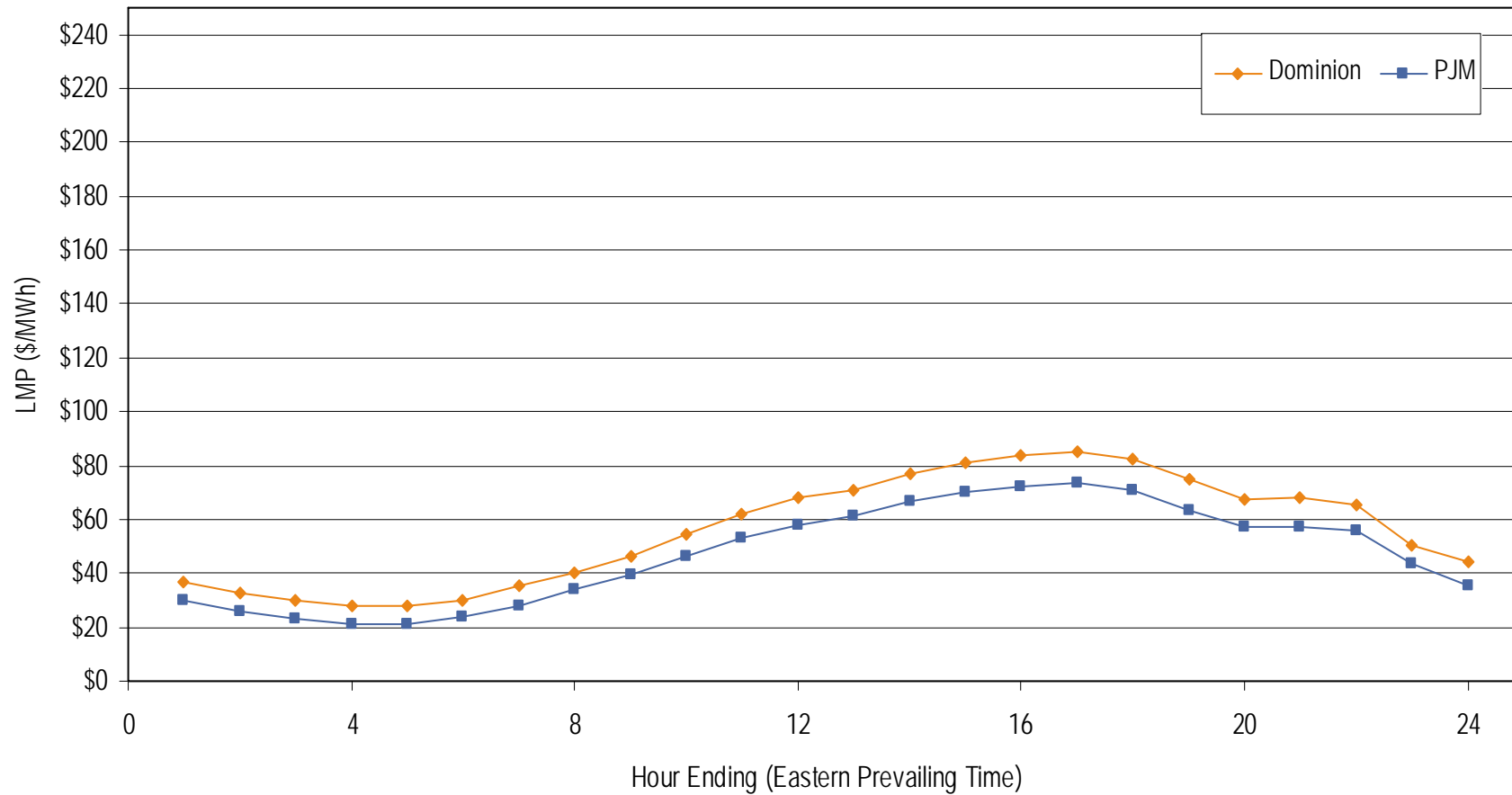
Frequency distribution by hours of Dominion day-ahead LMP June 2006



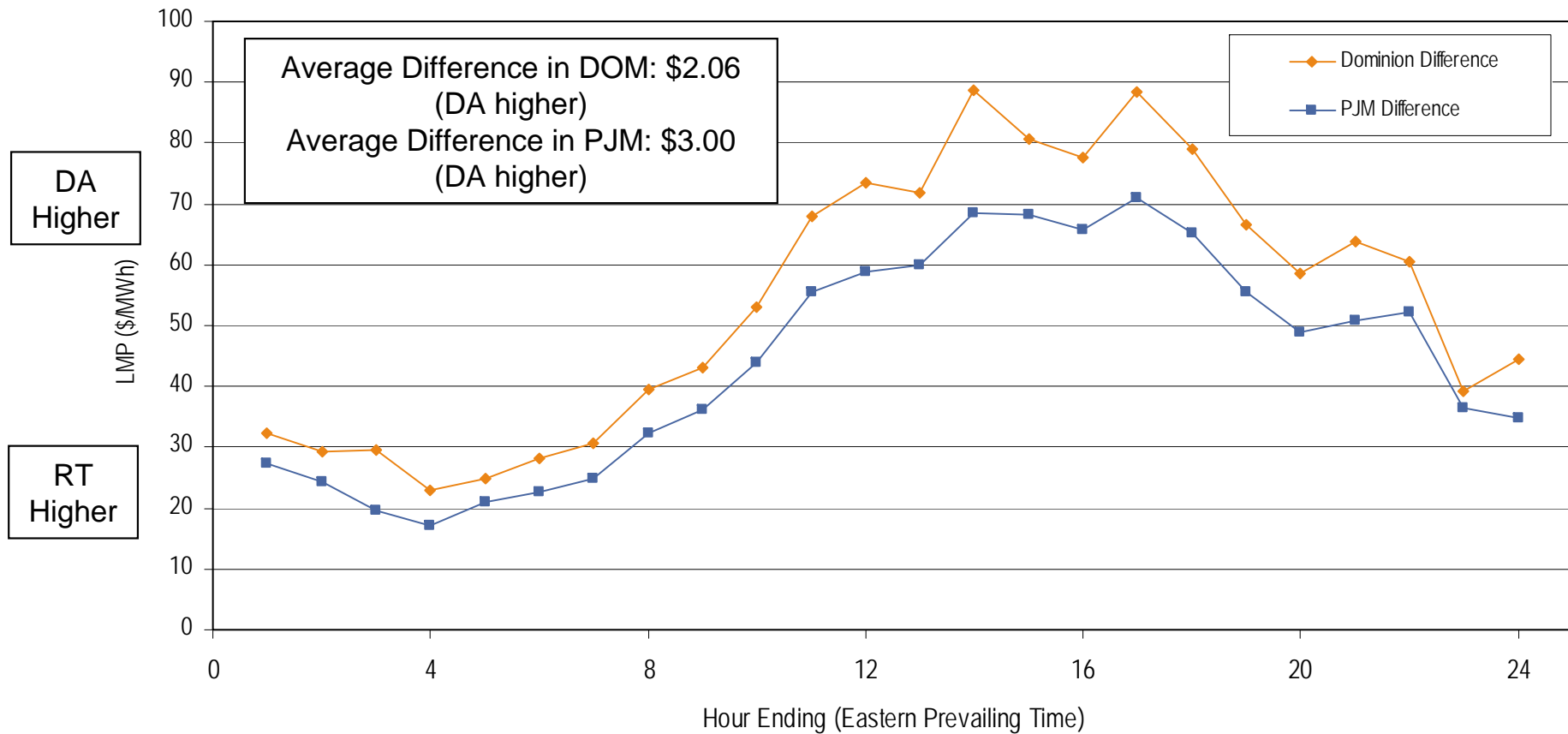
**Average Hourly Real-Time LMP
June 2006**



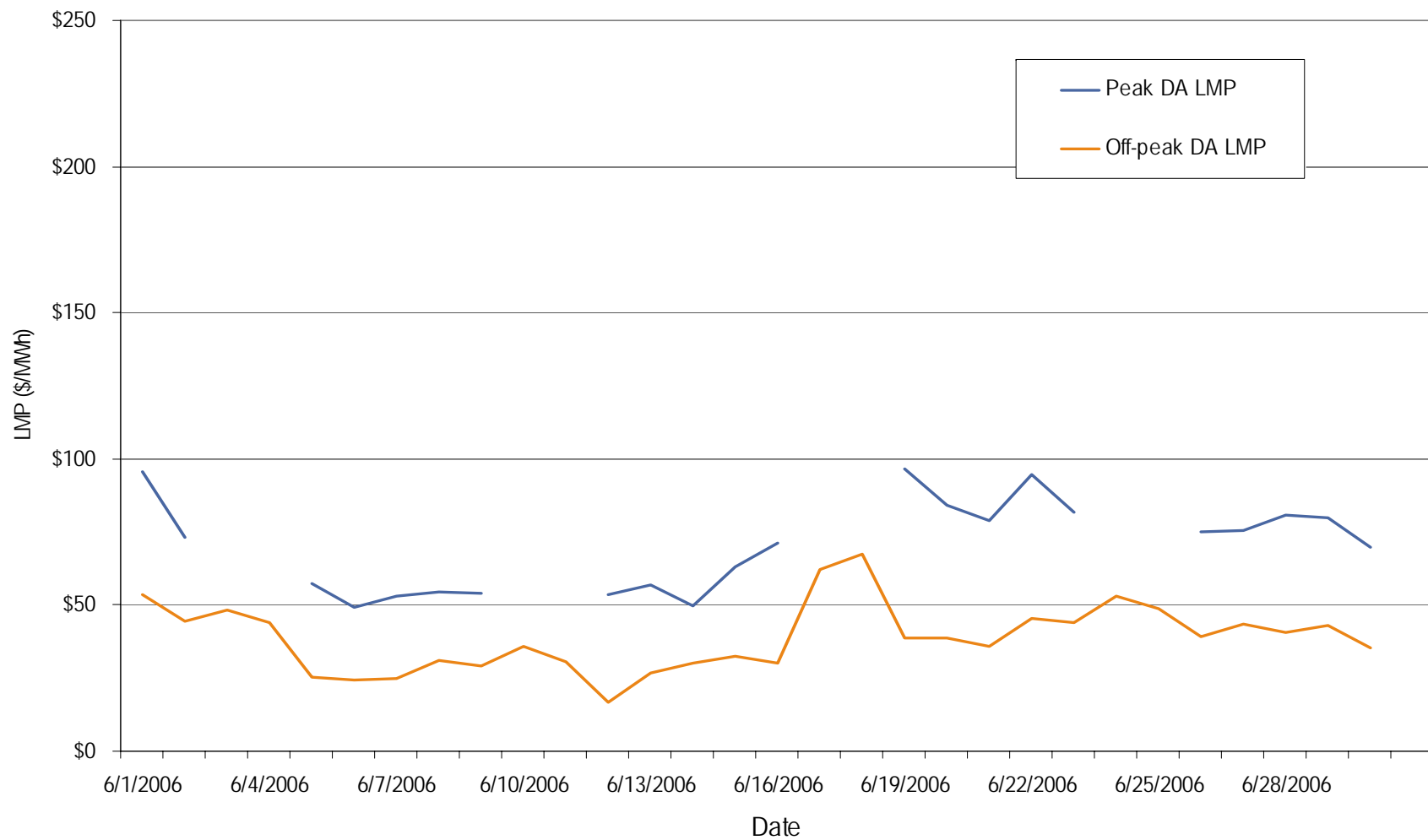
**Average Hourly Day-Ahead LMP
June 2006**



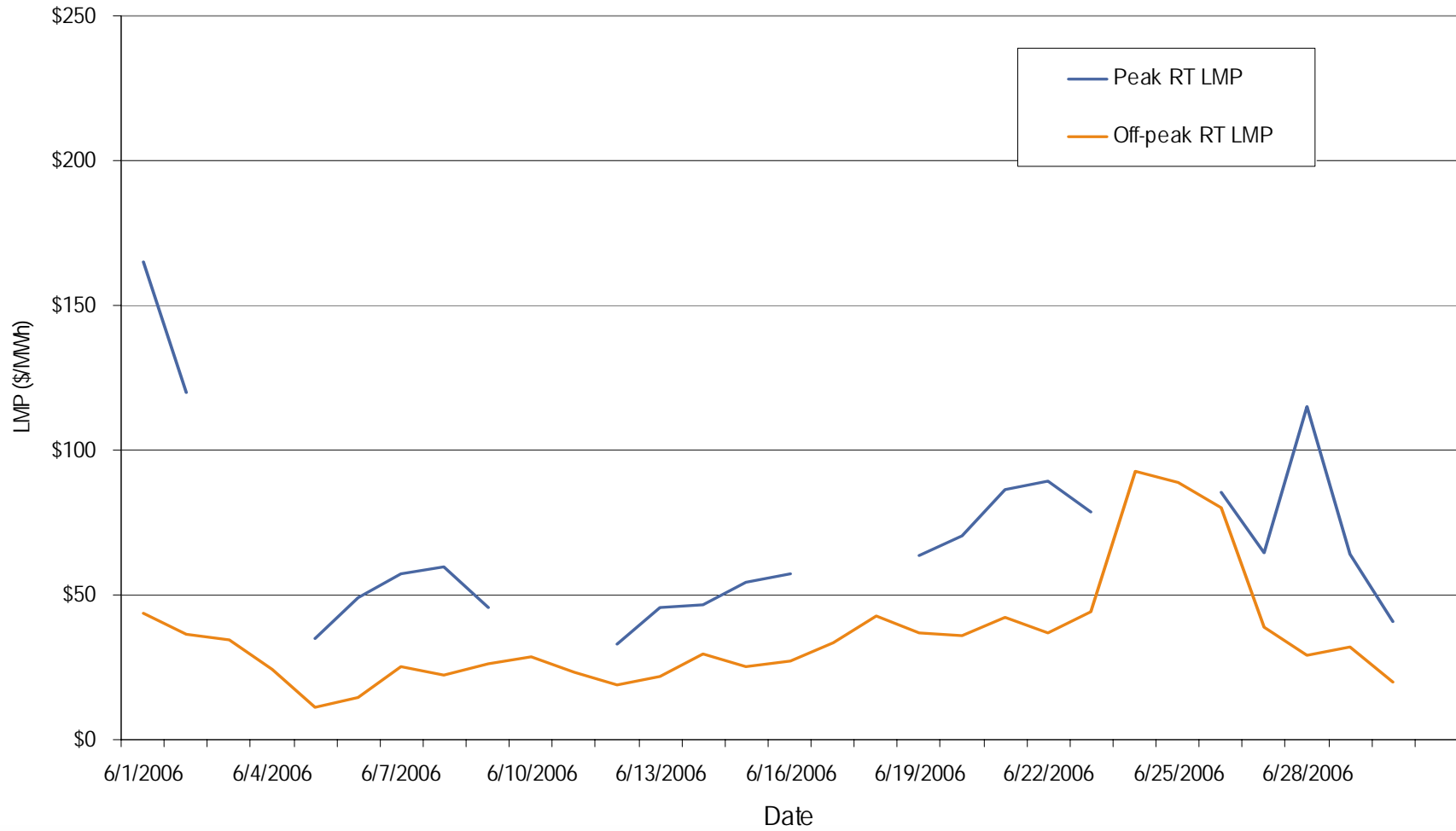
**Average Hourly Difference of Day-Ahead and Real-Time LMPs
June 2006**



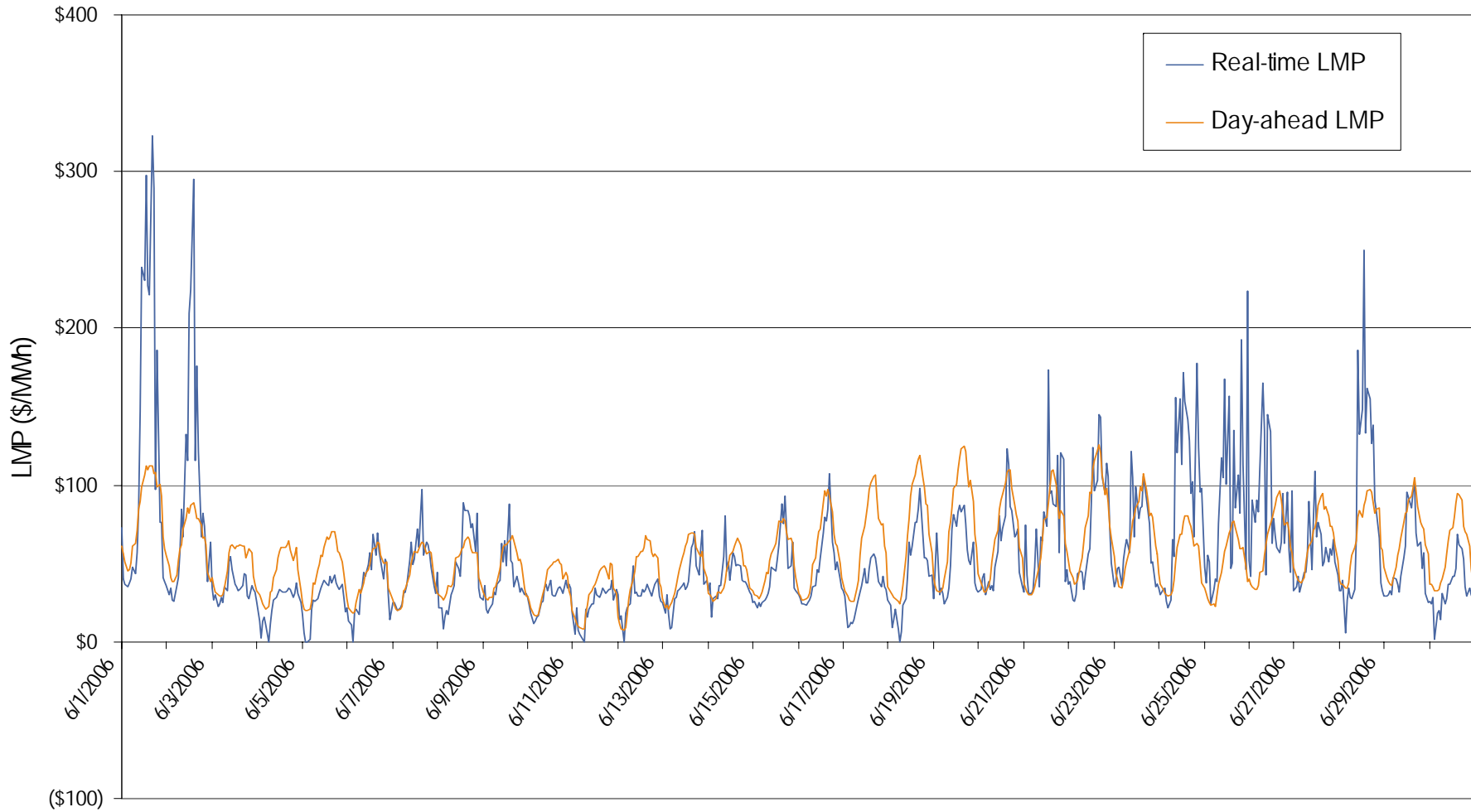
Dominion day-ahead peak and off-peak average daily LMP June 2006



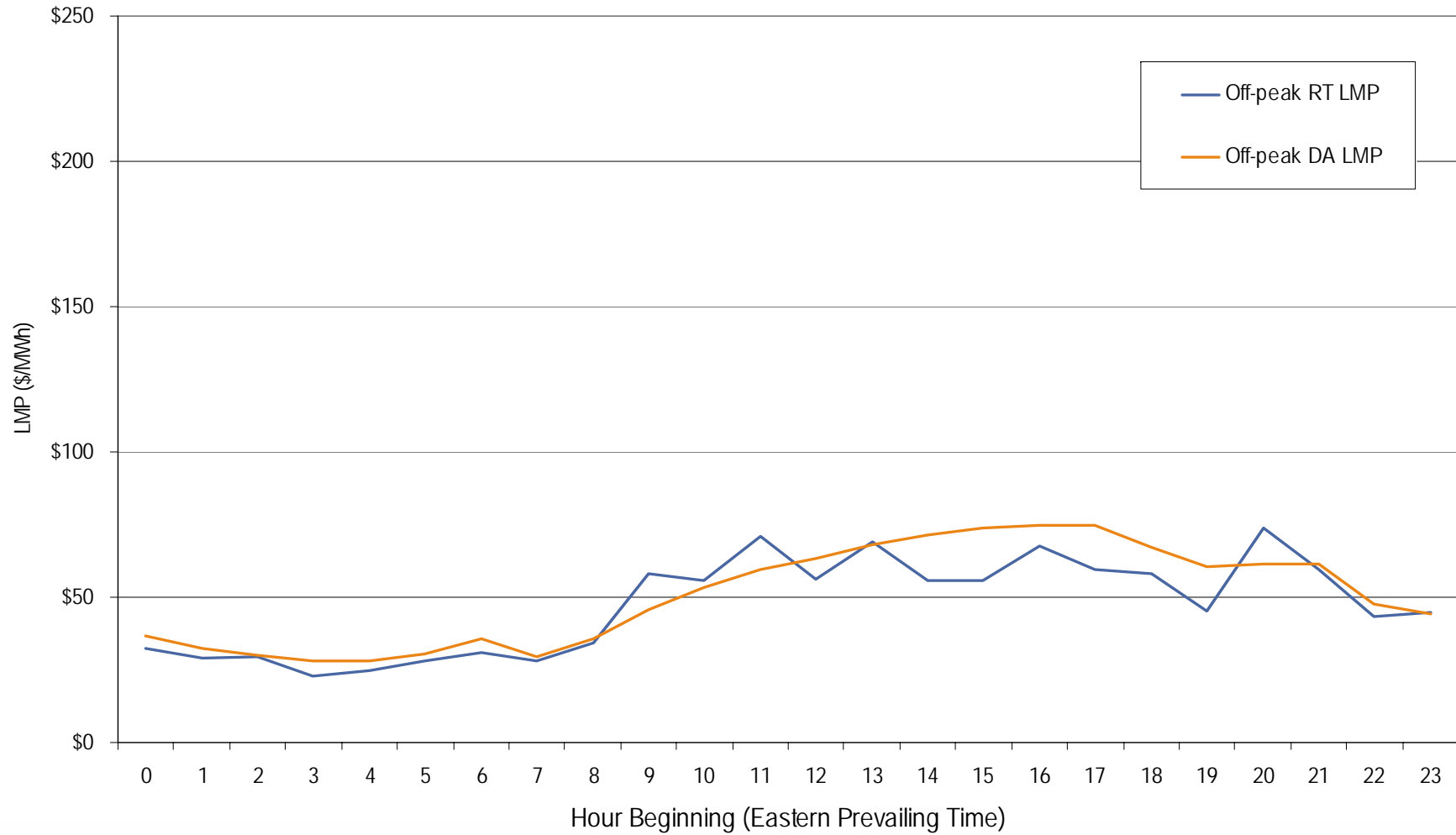
**Dominion real-time peak and off-peak average daily LMP
June 2006**



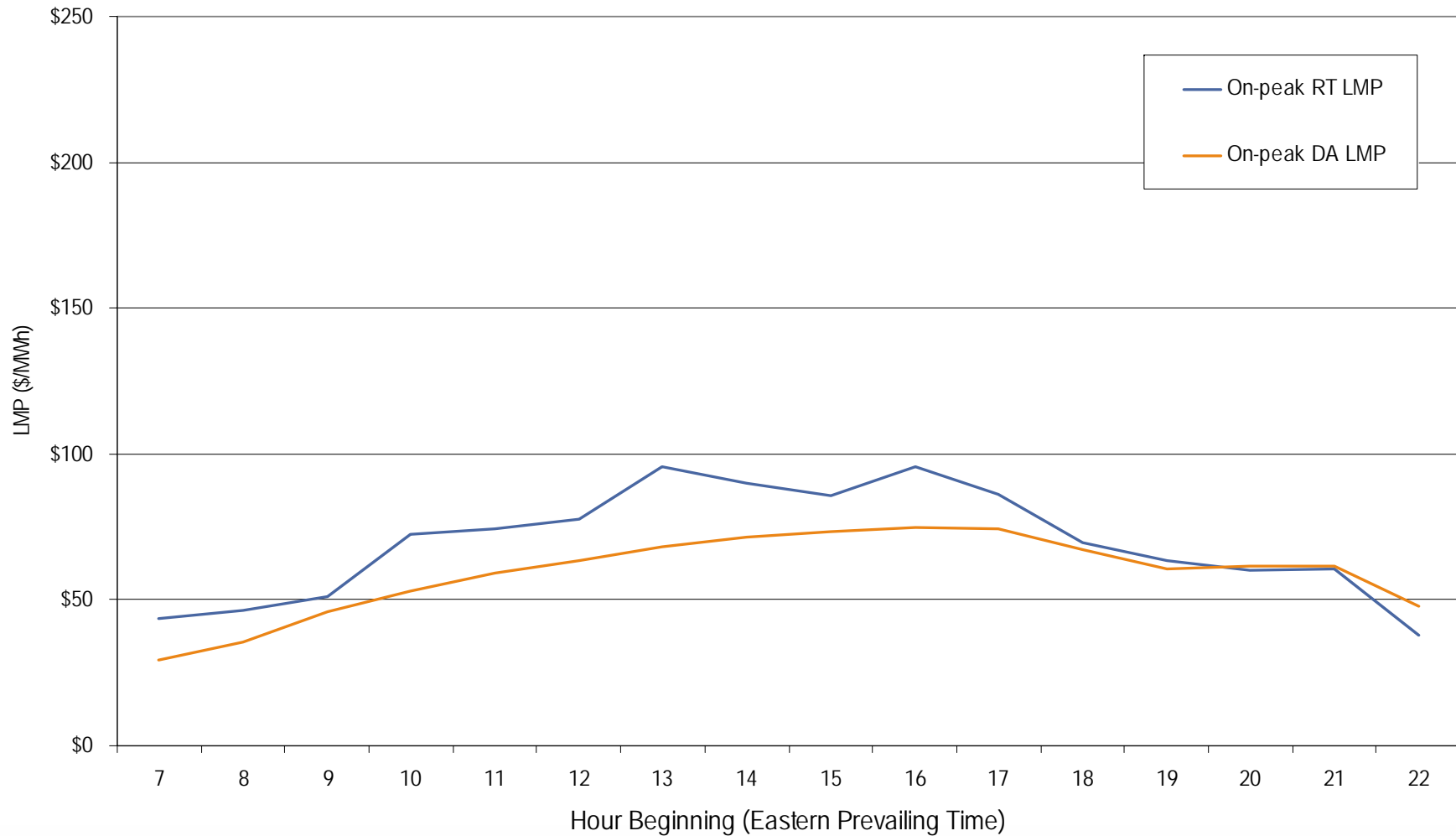
Dominion real-time and day-ahead hourly zonal LMP June 2006



**Dominion real-time and day-ahead hourly average off-peak LMP
June 2006**

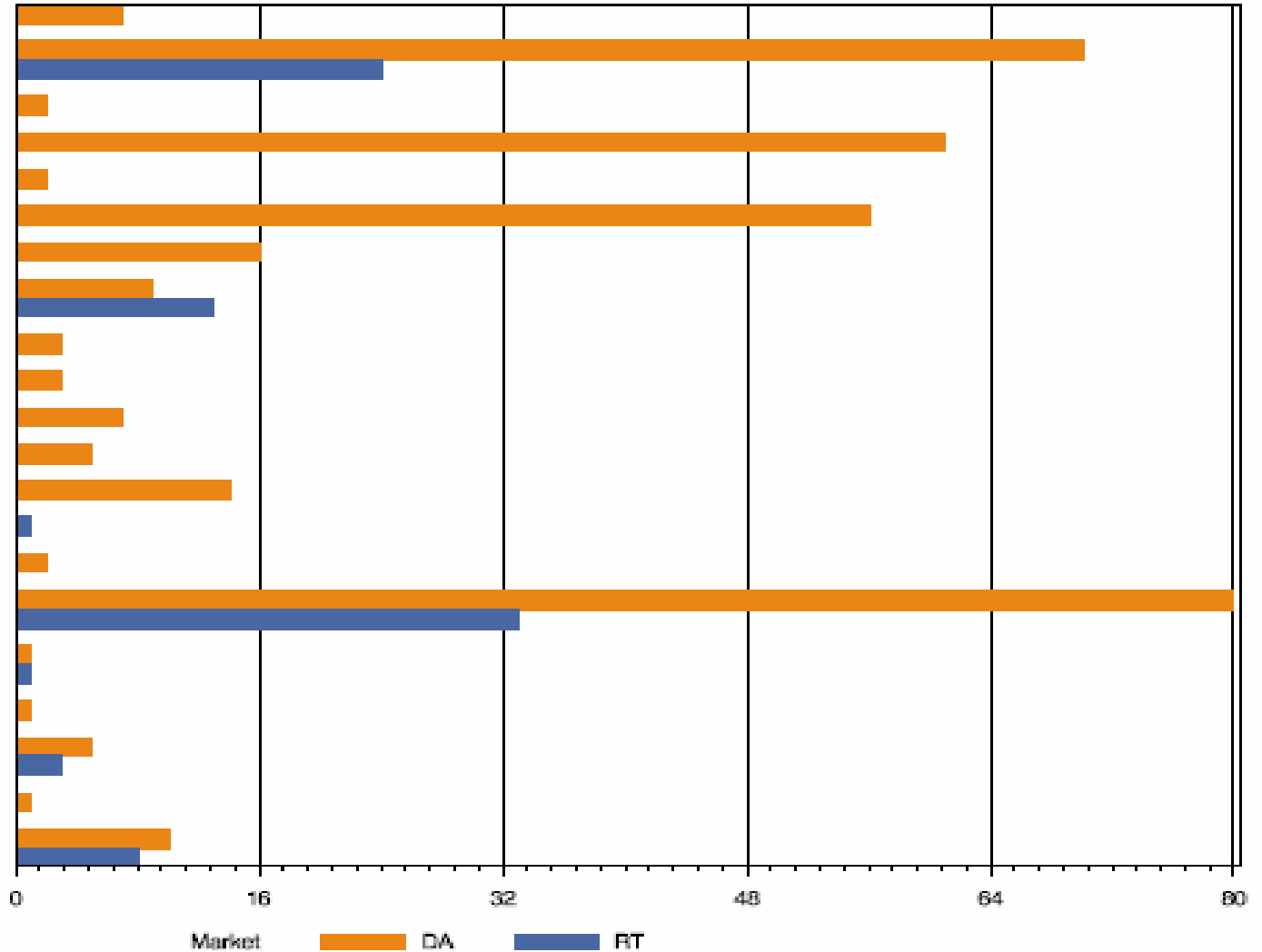


**Dominion real-time and day-ahead hourly average on-peak LMP
June 2006**



DOM Congestion Event Hours by Facility June 2006

- Alta Vista — Dominion
- Beechwood — Kerr Dam
- Buggs Island — Kerr Dam
- Chase City — Jones Store
- Cushew — Balcony Falls
- Danville — East Danville
- Dayton — Harrisonburg
- Dooms
- Dooms — Waynesboro
- Dupont Waynesboro — Waynesboro
- Edinburg
- Endless Caverns
- Farmville
- Fredericksburg
- Fudge Hollow — Covington
- Halifax — Mount Laurel
- Loudoun — Montsville
- Mount Storm — Valley
- Possum Point
- Stuarts Draft — Dupont Waynesbor
- Tyler — Chesterfield



Offer Capping for June 2006:

- There were 83 event hours of Real-Time congestion in Dominion in June.
 - There were 68 offer capped unit hours in Real-Time.
- There were 357 event hours of Day-Ahead congestion in Dominion in June.
 - There was no offer capping in Day-Ahead.