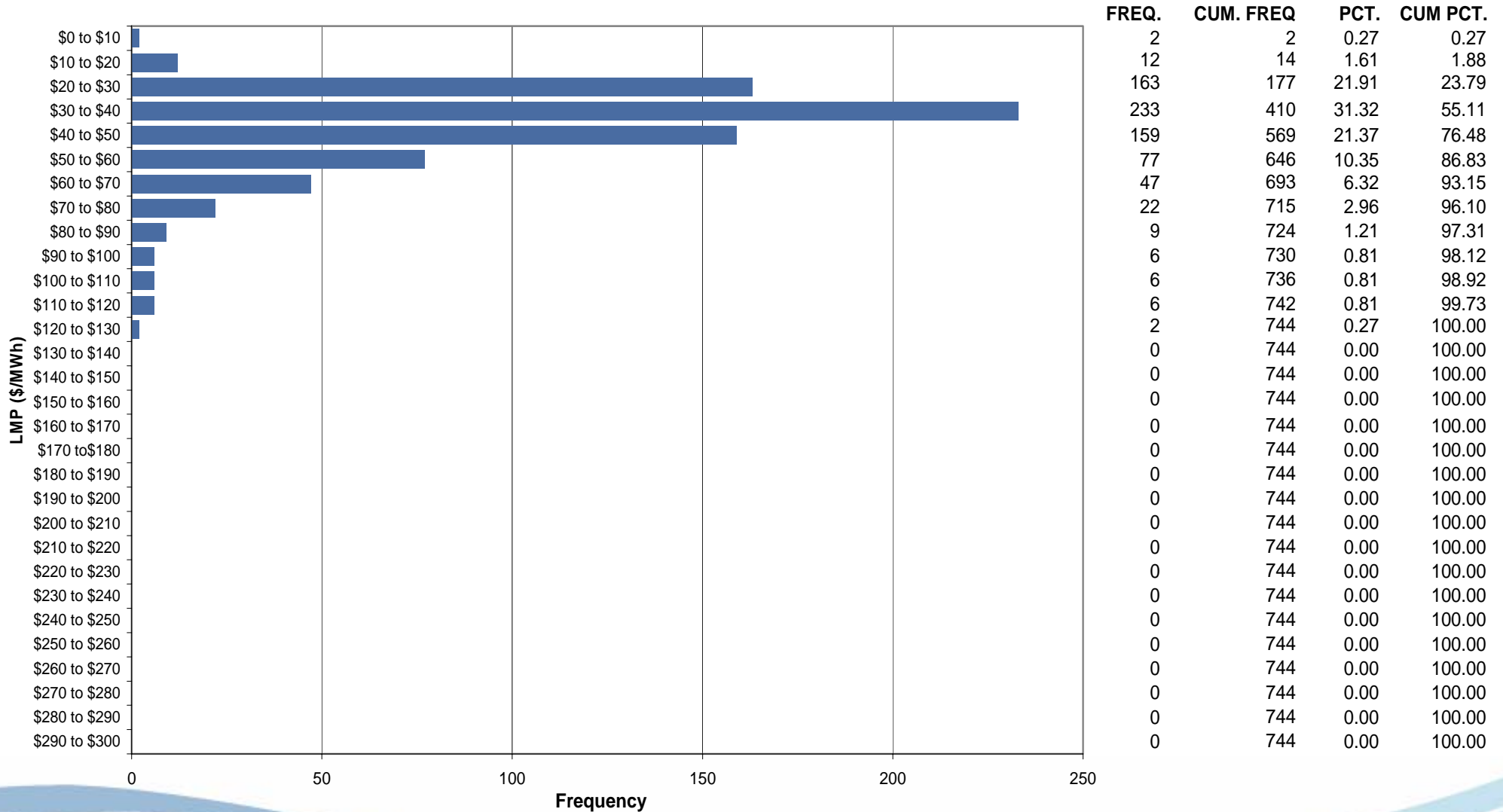




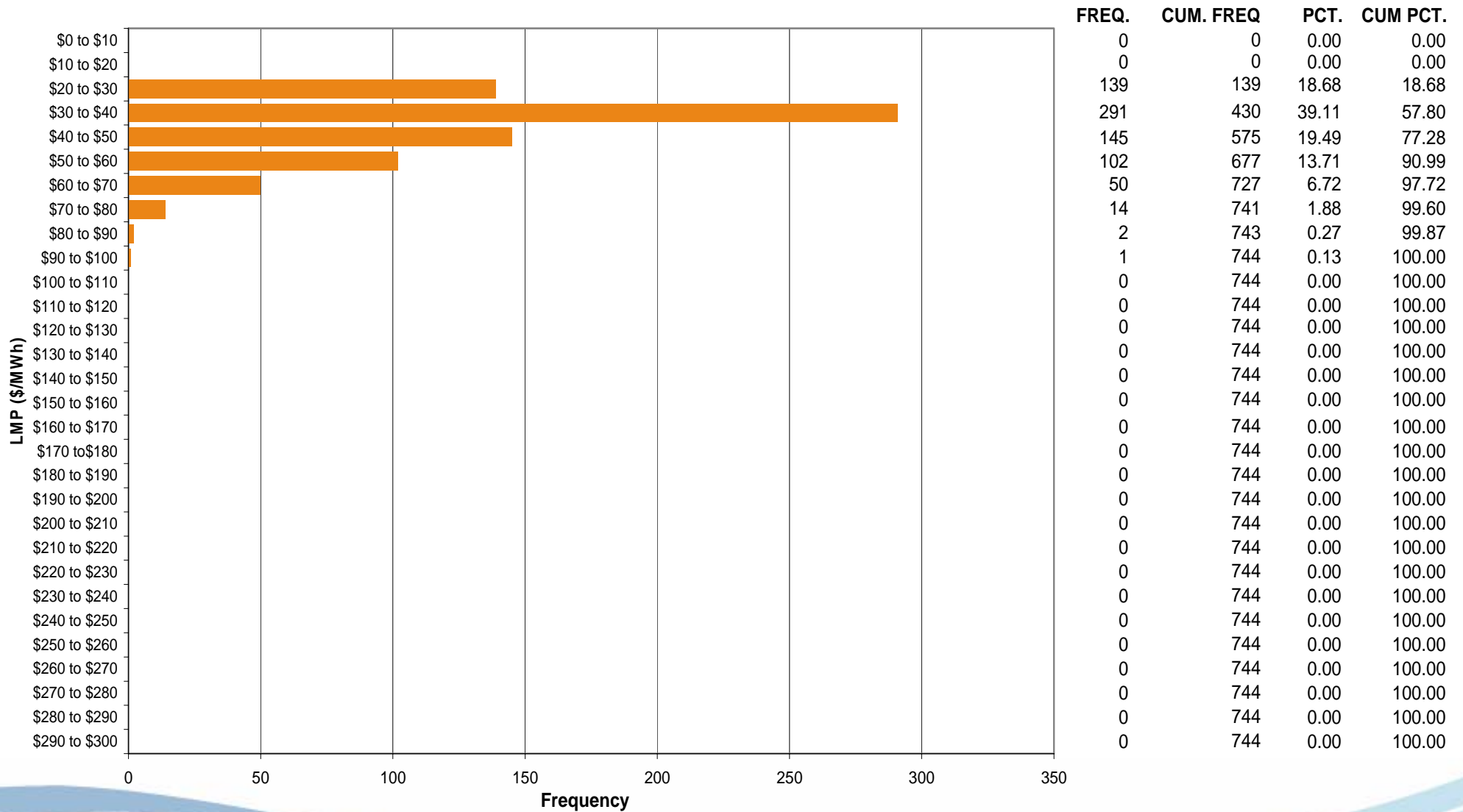
# ComEd Control Zone Market Monitoring Report for March 2006

Market Monitoring Unit  
April 2006

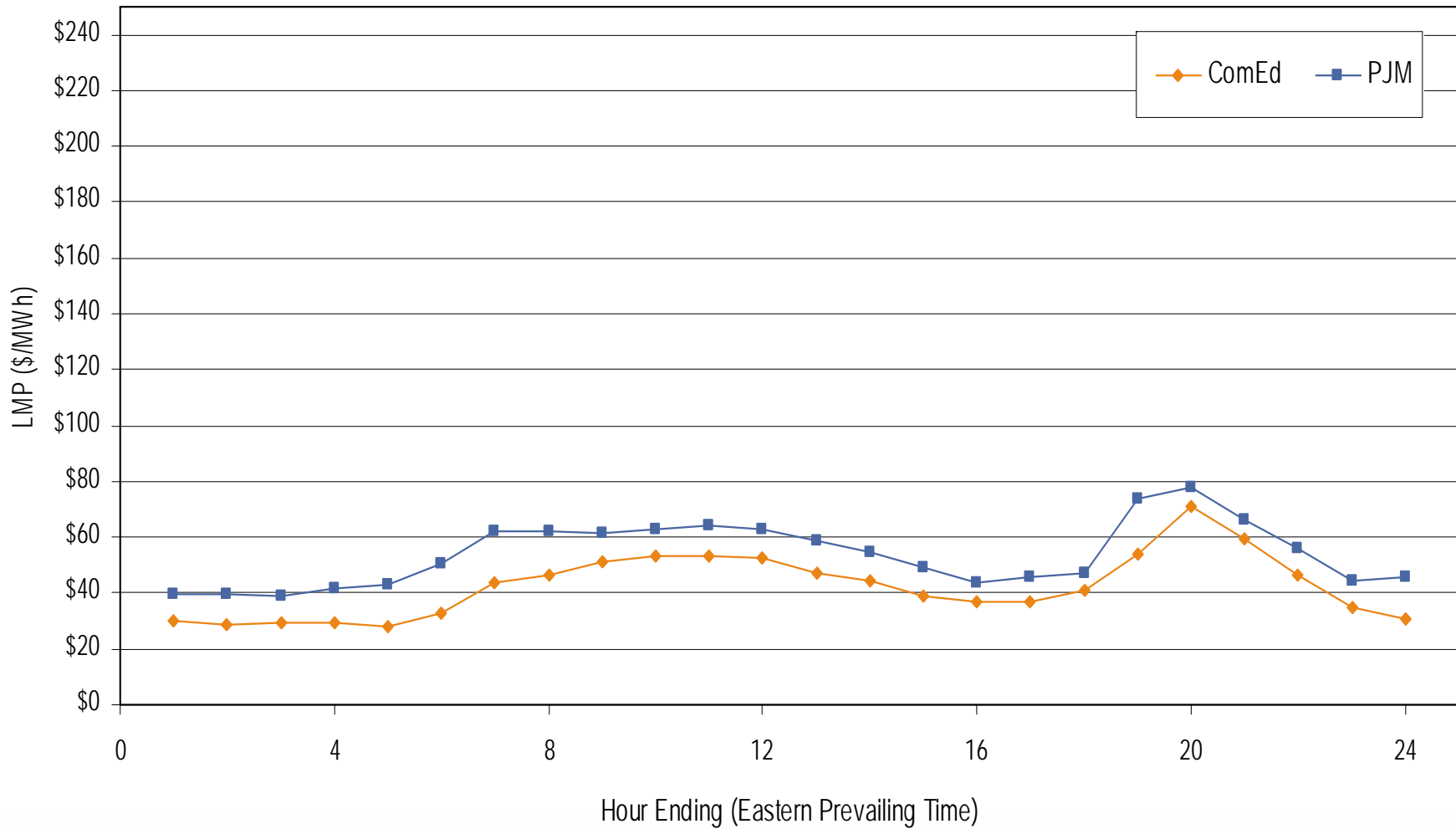
### Frequency distribution by hours of ComEd real-time LMP March 2006



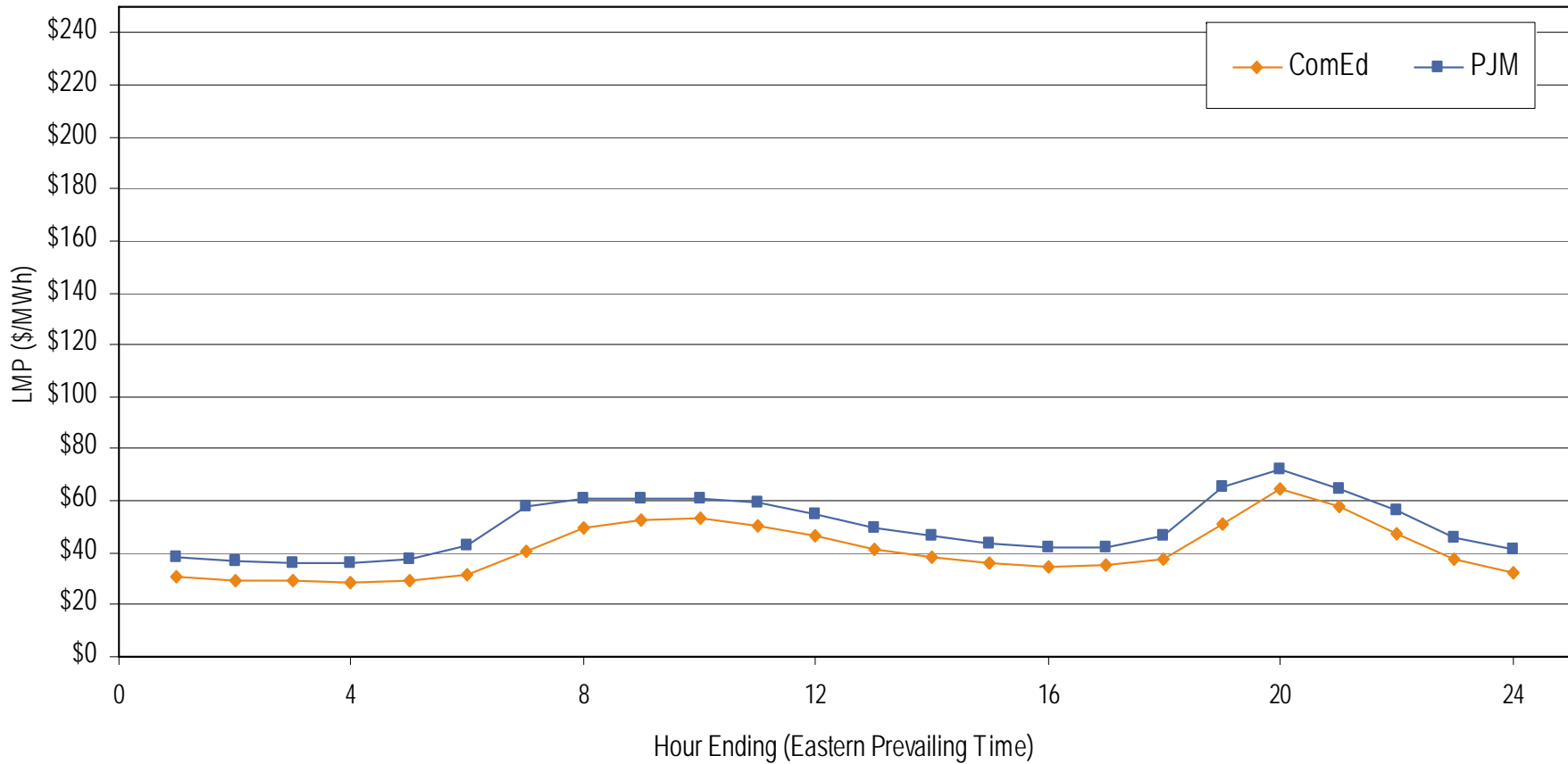
### Frequency distribution by hours of ComEd day-ahead LMP March 2006



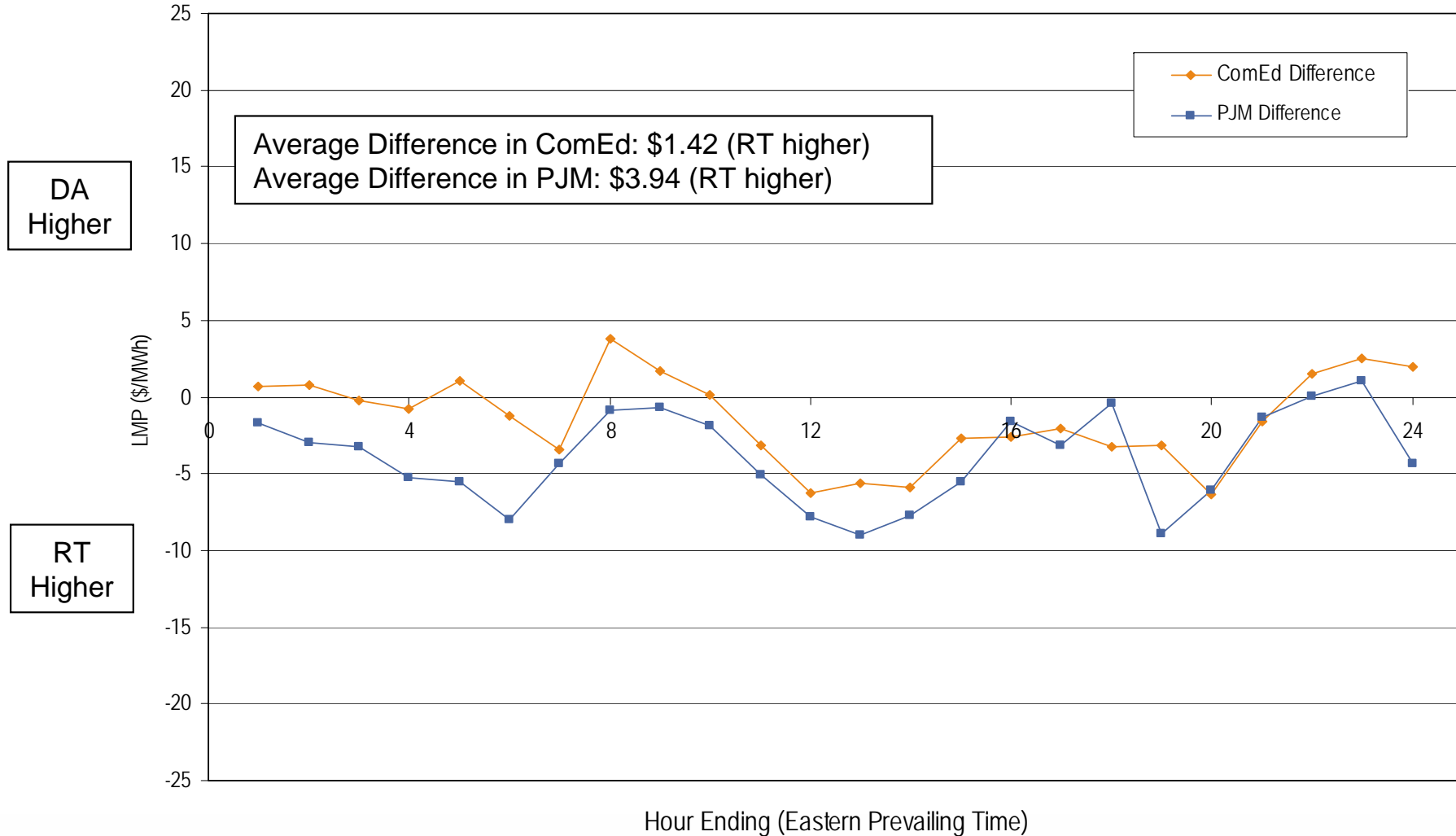
**Average hourly real-time LMP  
March 2006**



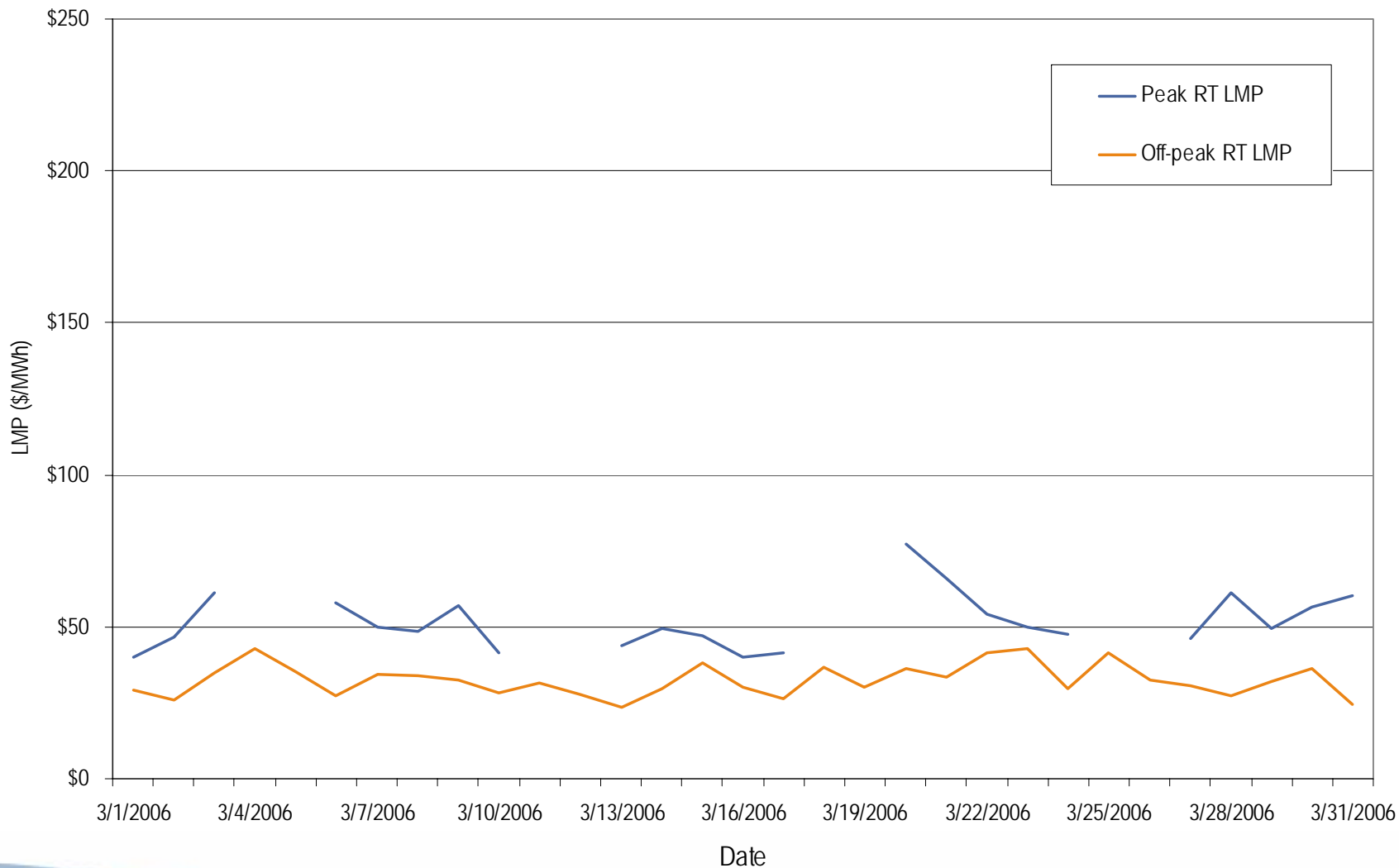
**Average hourly day-ahead LMP  
March 2006**



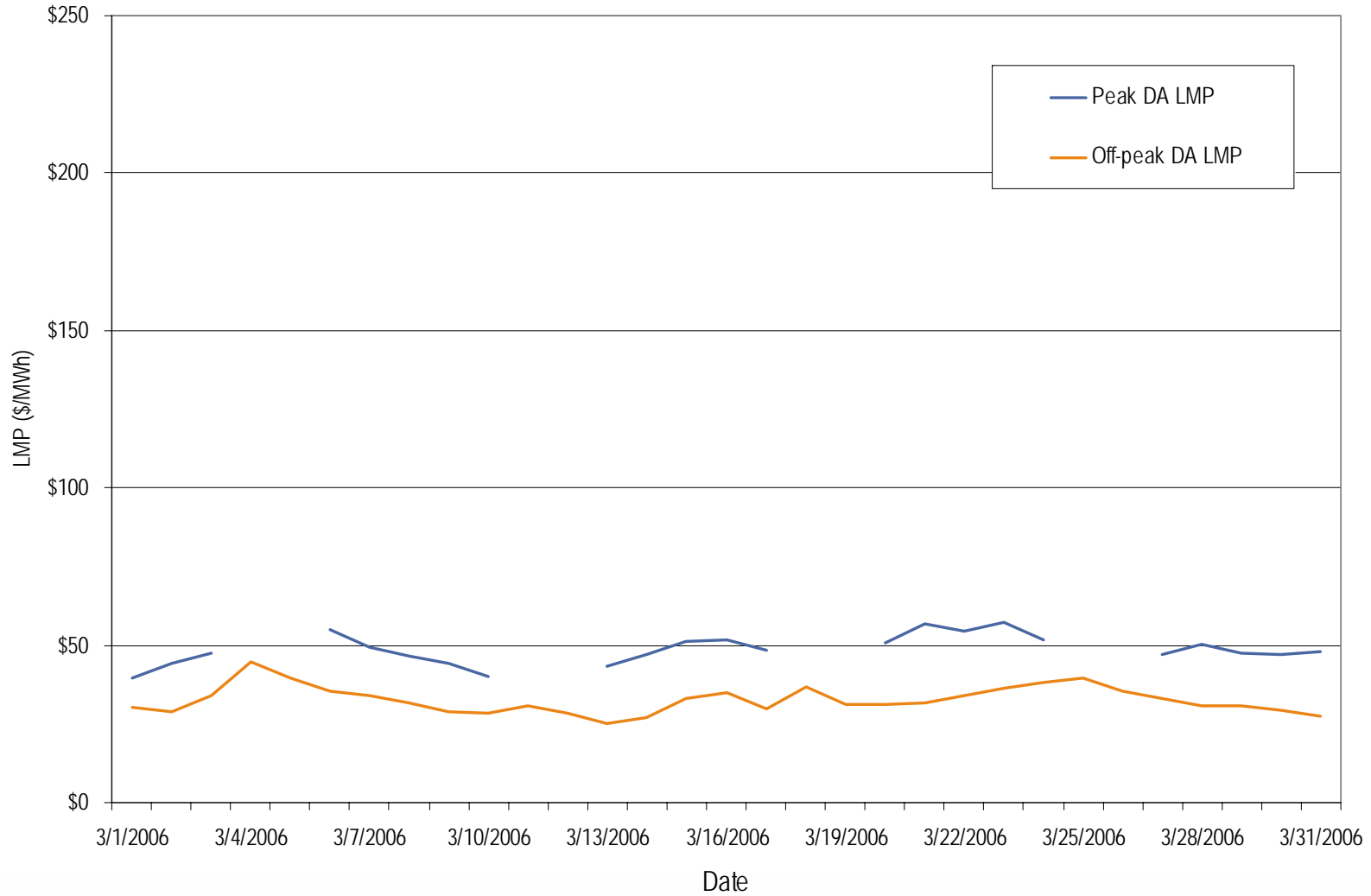
**Average hourly difference of day-ahead and real-time LMPs  
March 2006**



## ComEd real-time peak and off-peak average daily LMP March 2006

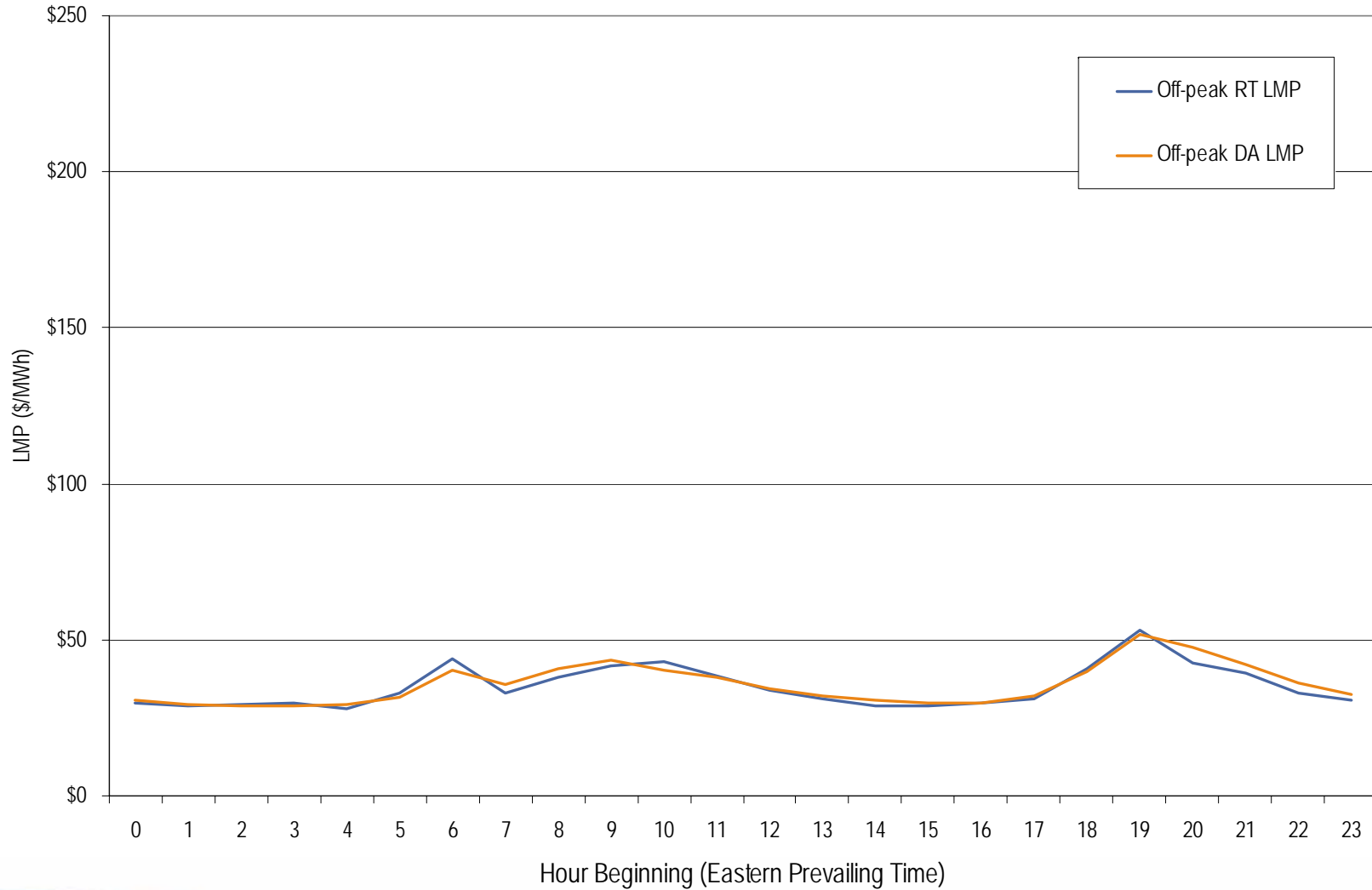


**ComEd day-ahead peak and off-peak average daily LMP  
March 2006**

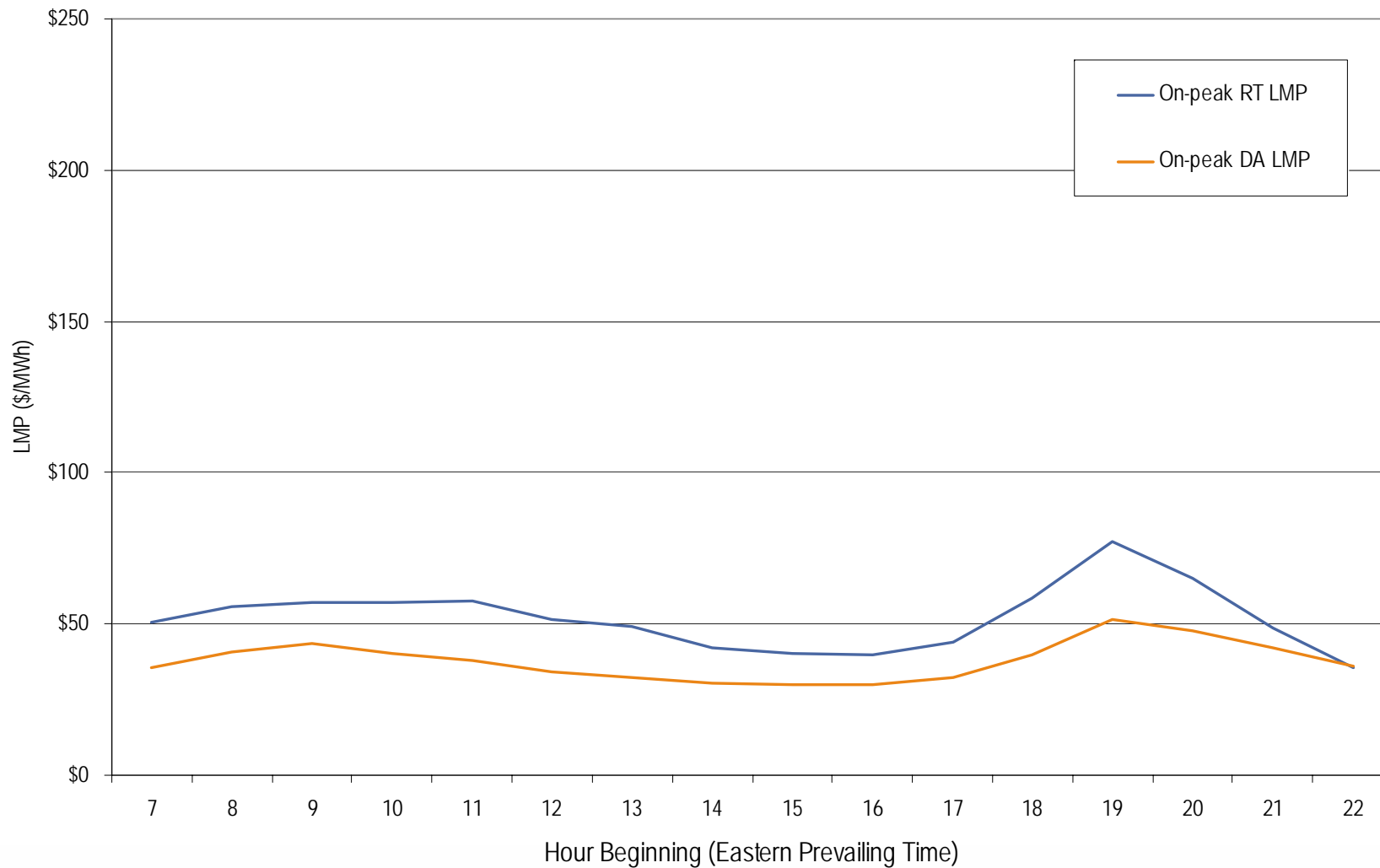




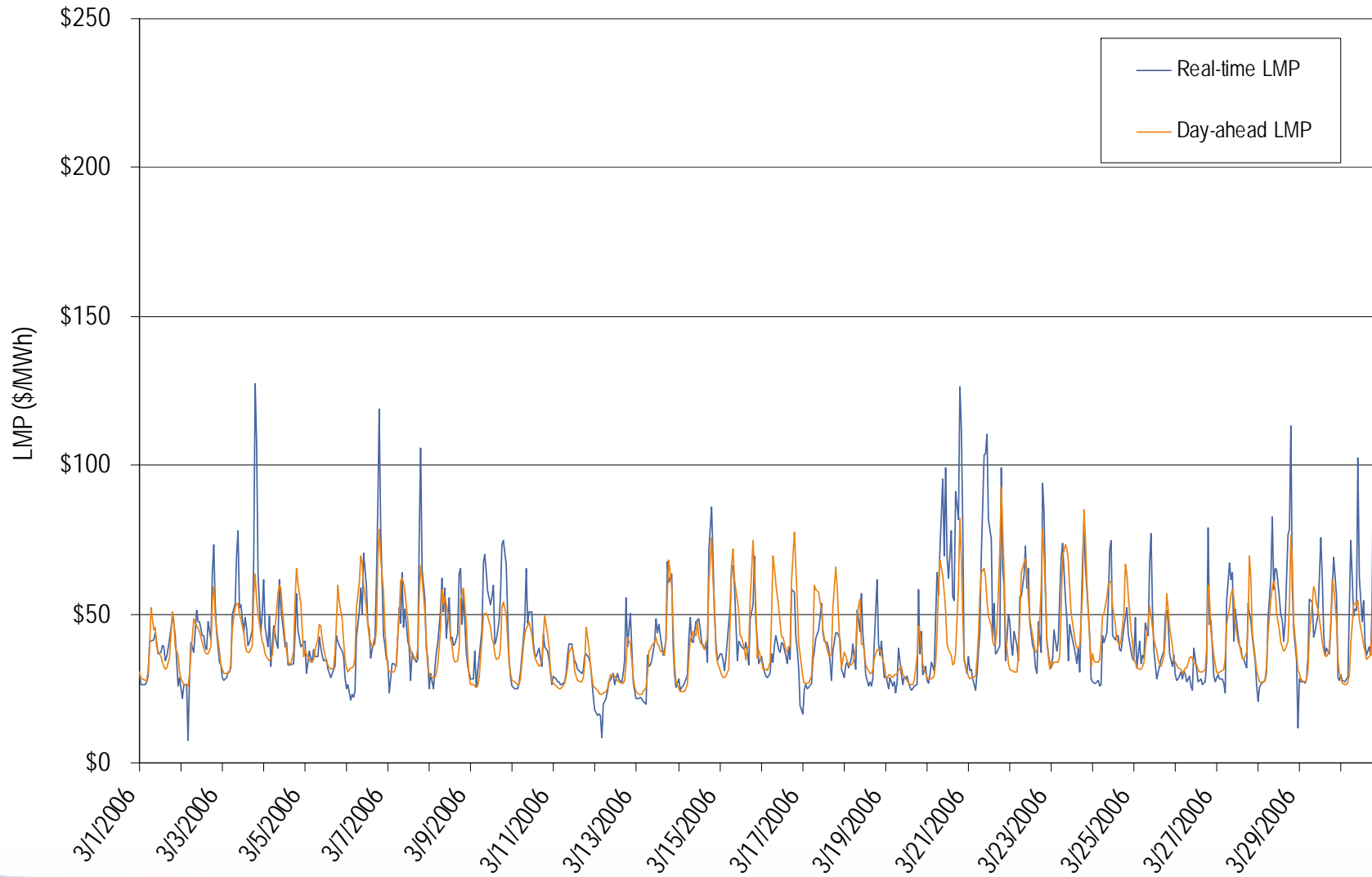
**ComEd real-time and day-ahead hourly average off-peak LMP  
March 2006**



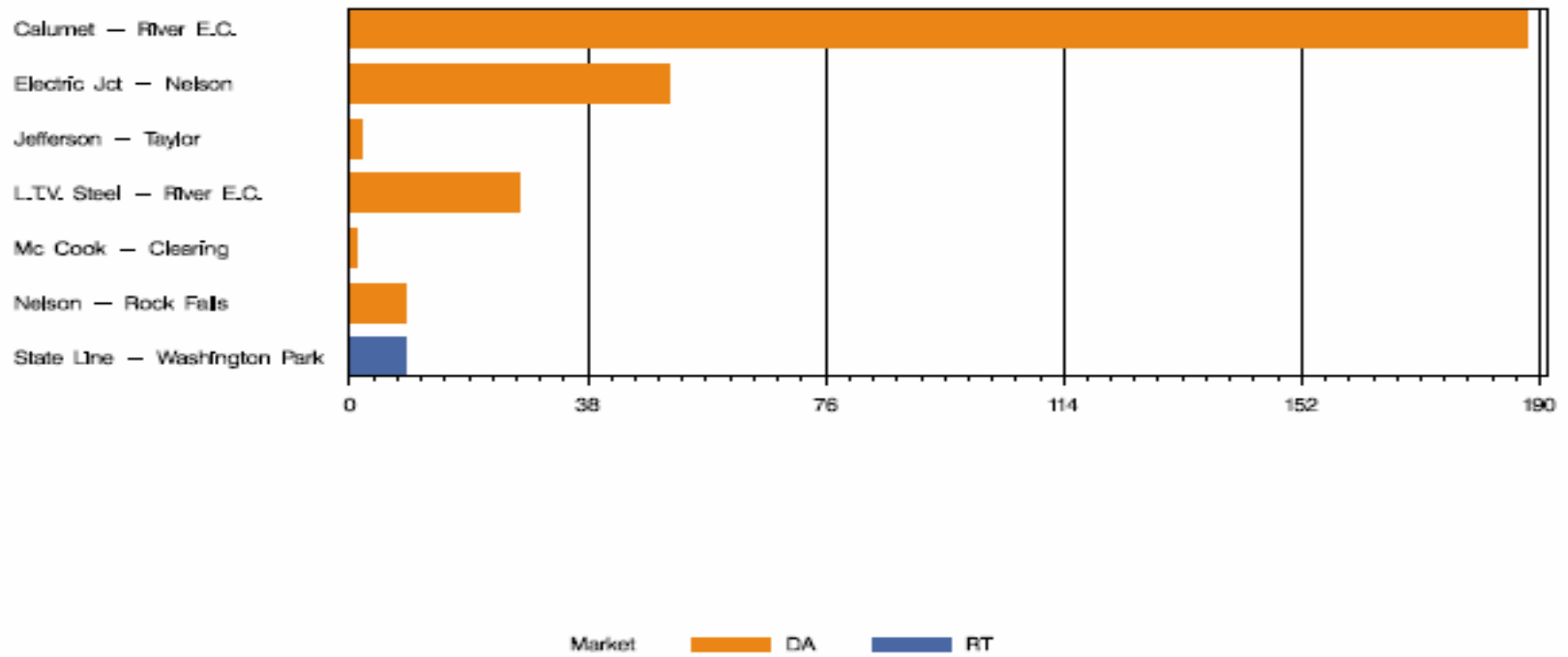
## ComEd real-time and day-ahead hourly average on-peak LMP March 2006



## ComEd real-time and day-ahead hourly zonal LMP March 2006



## COMED Congestion Event Hours by Facility March 2006



## Offer Capping for March 2006:

- There were 9 event hours of Real-Time congestion in ComEd in March.
  - There were 20 offer capped unit hours in Real-Time.
- There were 278 event hours of Day-Ahead congestion in ComEd in March.
  - There were 24 offer capped unit hours in Day-Ahead.

- There were no TLRs called for the ComEd Control Area in March.

- Forward prices for the April 2006 contract showed varying spreads during March.
  - Spreads reflect traders' expectations about future prices.
  - The maximum NIHub-CINergy spread was \$1.75 per MWh during March.
  - The minimum NIHub-CINergy spread was -\$2.75 per MWh during March.
  - The average NIHub-CINergy spread was \$0.09 per MWh during March.
  - The NIHub-CINergy spread was \$1.75 per MWh on the final trading day for the April 2006 contract.

## Cinergy, NIHub and PJM West Forward Prices

contract=Apr06





- Forward prices for the May 2006 contract showed varying spreads during March.
  - Spreads reflect traders' expectations about future prices.
  - The maximum NIHub-CINergy spread was \$0.55 per MWh during March.
  - The minimum NIHub-CINergy spread was -\$3.60 per MWh during March.
  - The average NIHub-CINergy spread was -\$2.16 per MWh during March.
  - The NIHub-CINergy spread was \$0.50 per MWh on the final trading day of March for the May 2006 contract.

## Cinergy, NIHub and PJM West Forward Prices

contract=May06

