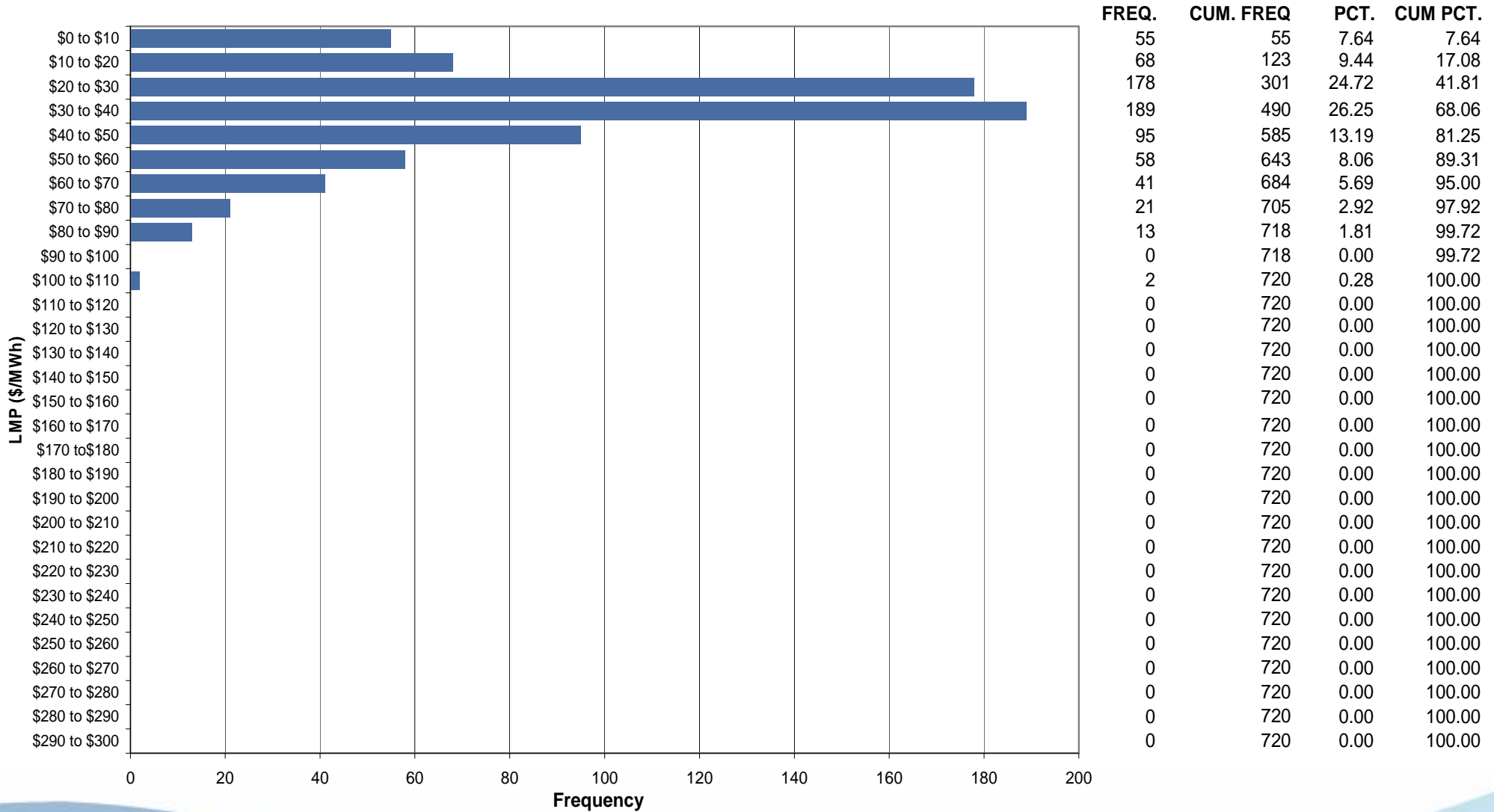




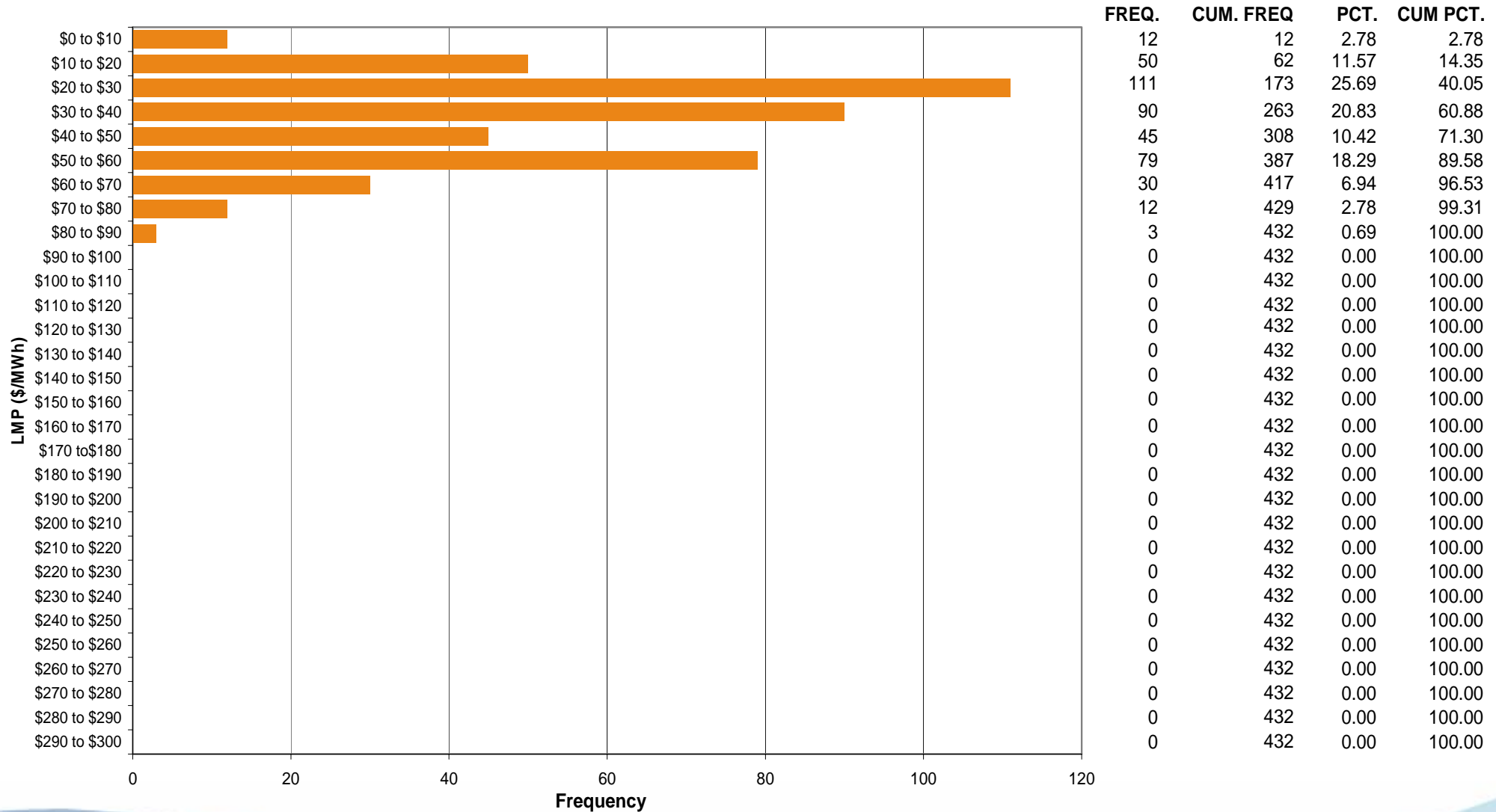
ComEd Control Zone Market Monitoring Report for June 2006

Market Monitoring Unit
July 2006

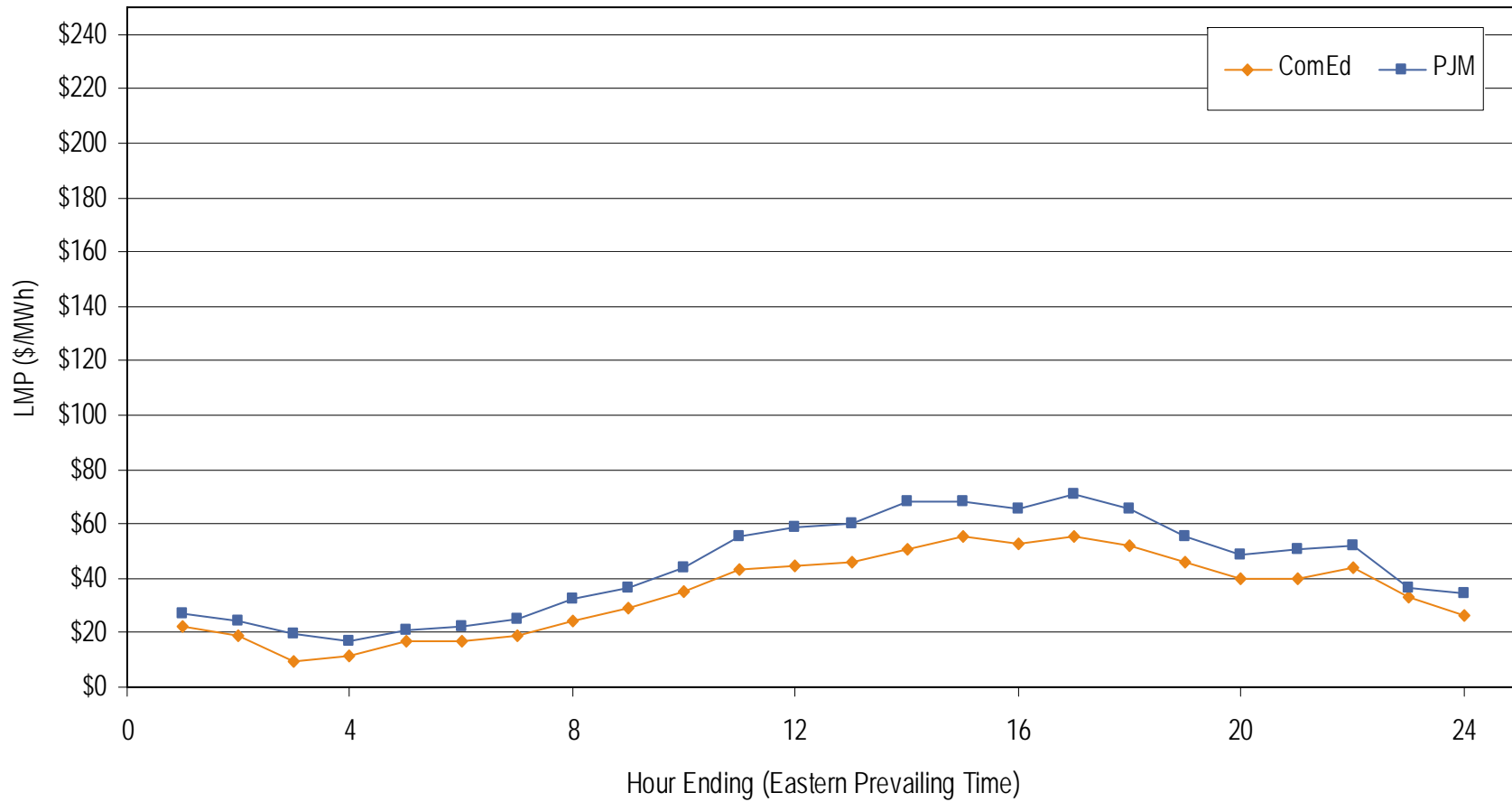
Frequency distribution by hours of ComEd real-time LMP June 2006



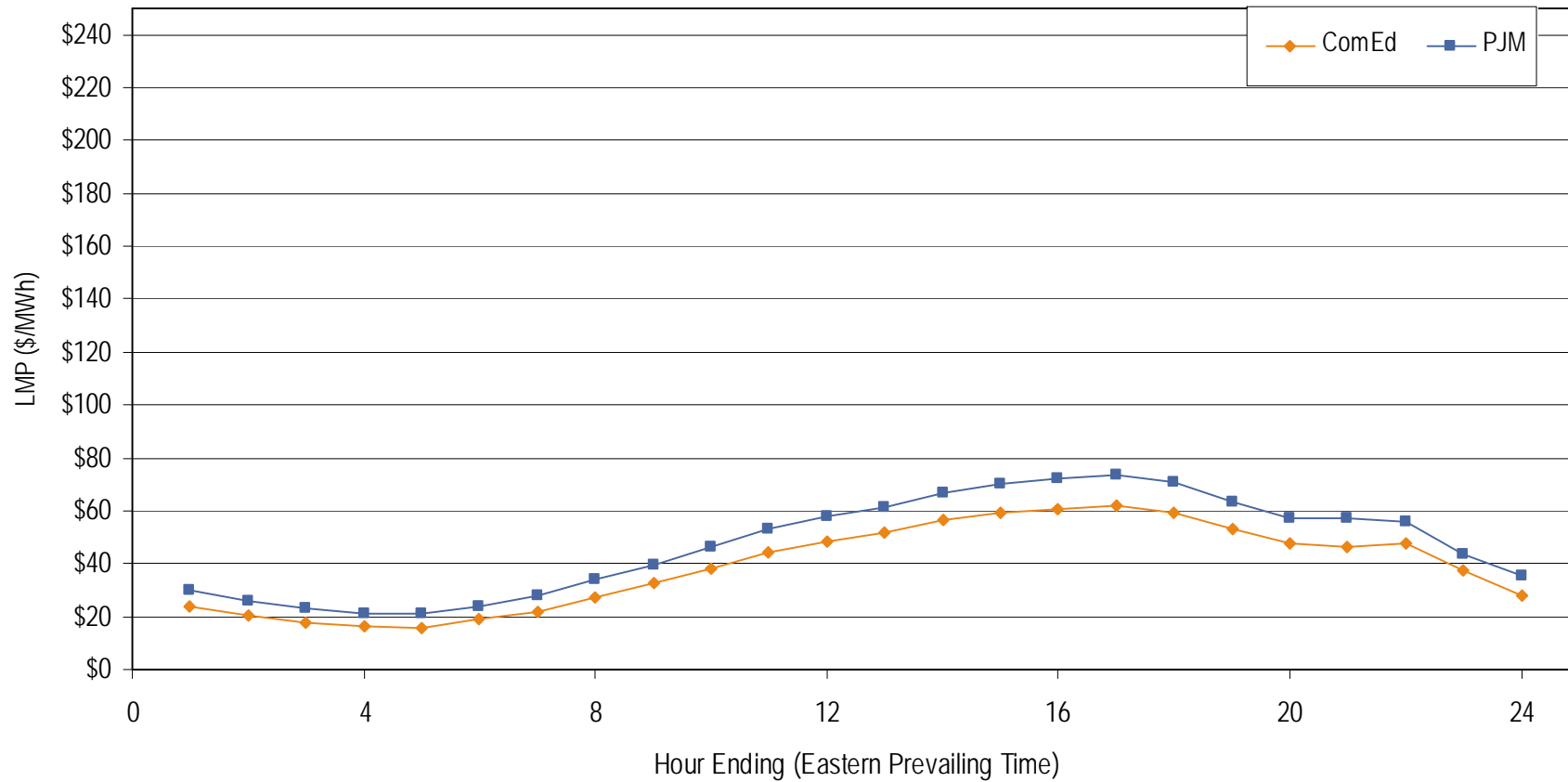
Frequency distribution by hours of ComEd day-ahead LMP
June 2006



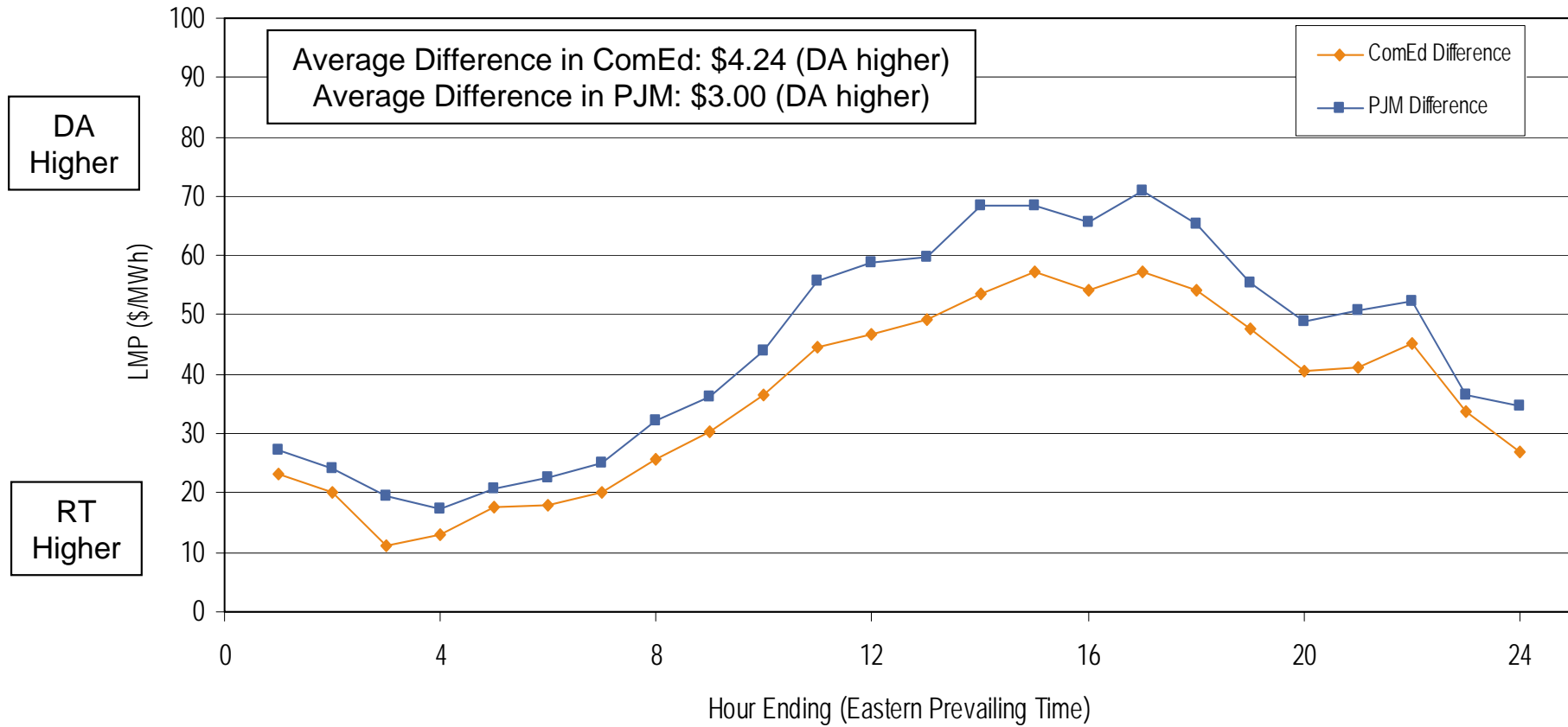
**Average Hourly Real-Time LMP
June 2006**



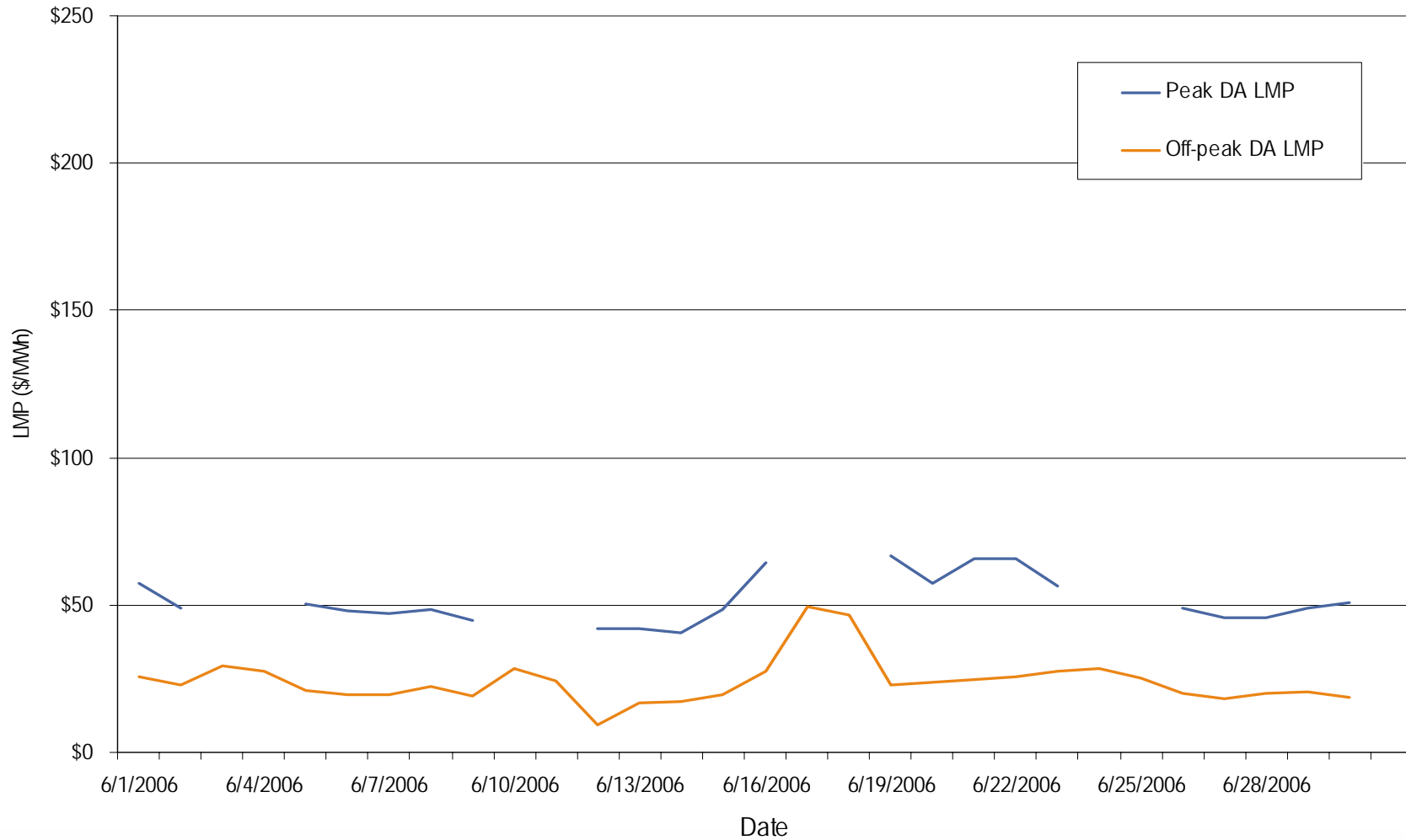
**Average Hourly Day-Ahead LMP
June 2006**



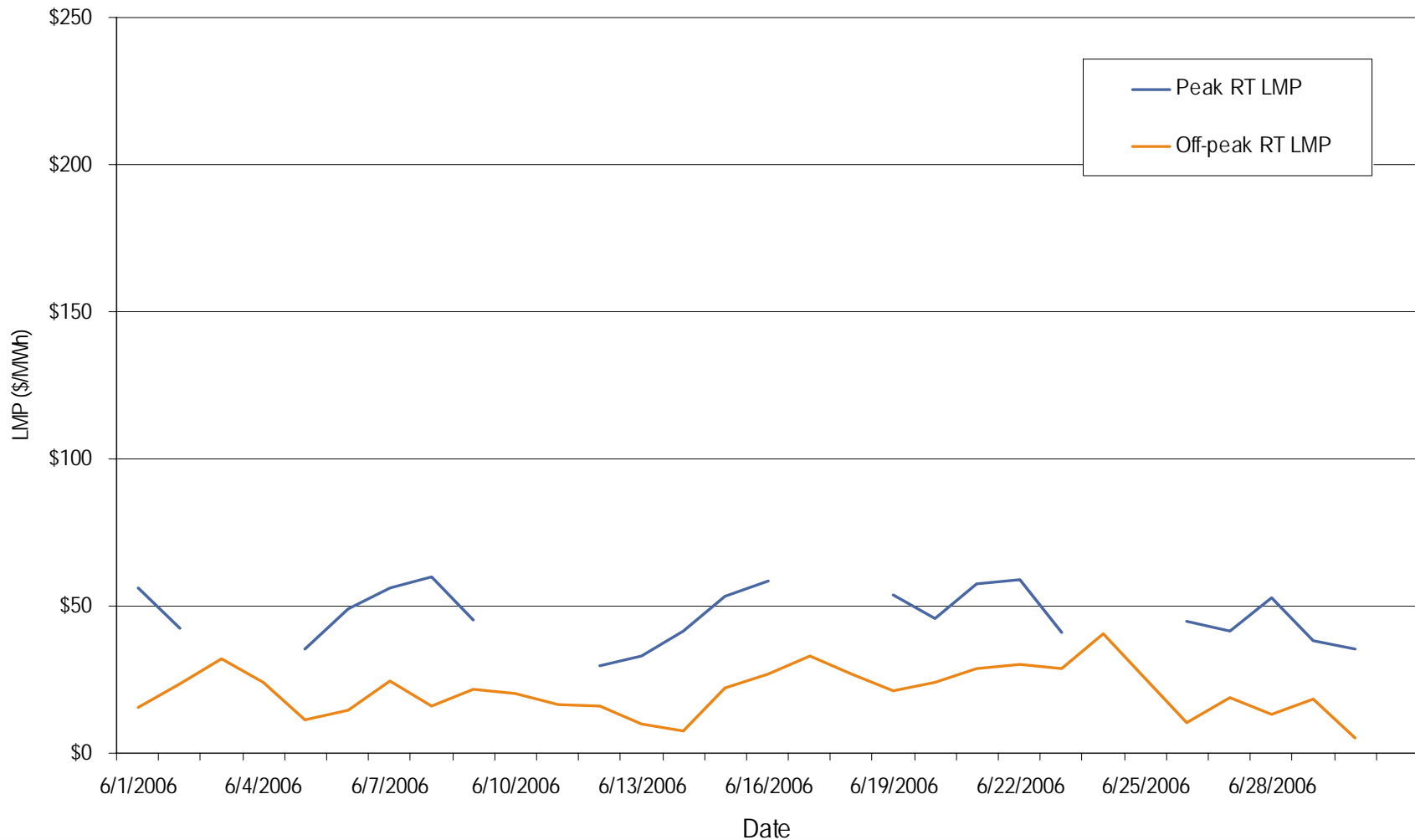
**Average Hourly Difference of Day-Ahead and Real-Time LMPs
June 2006**



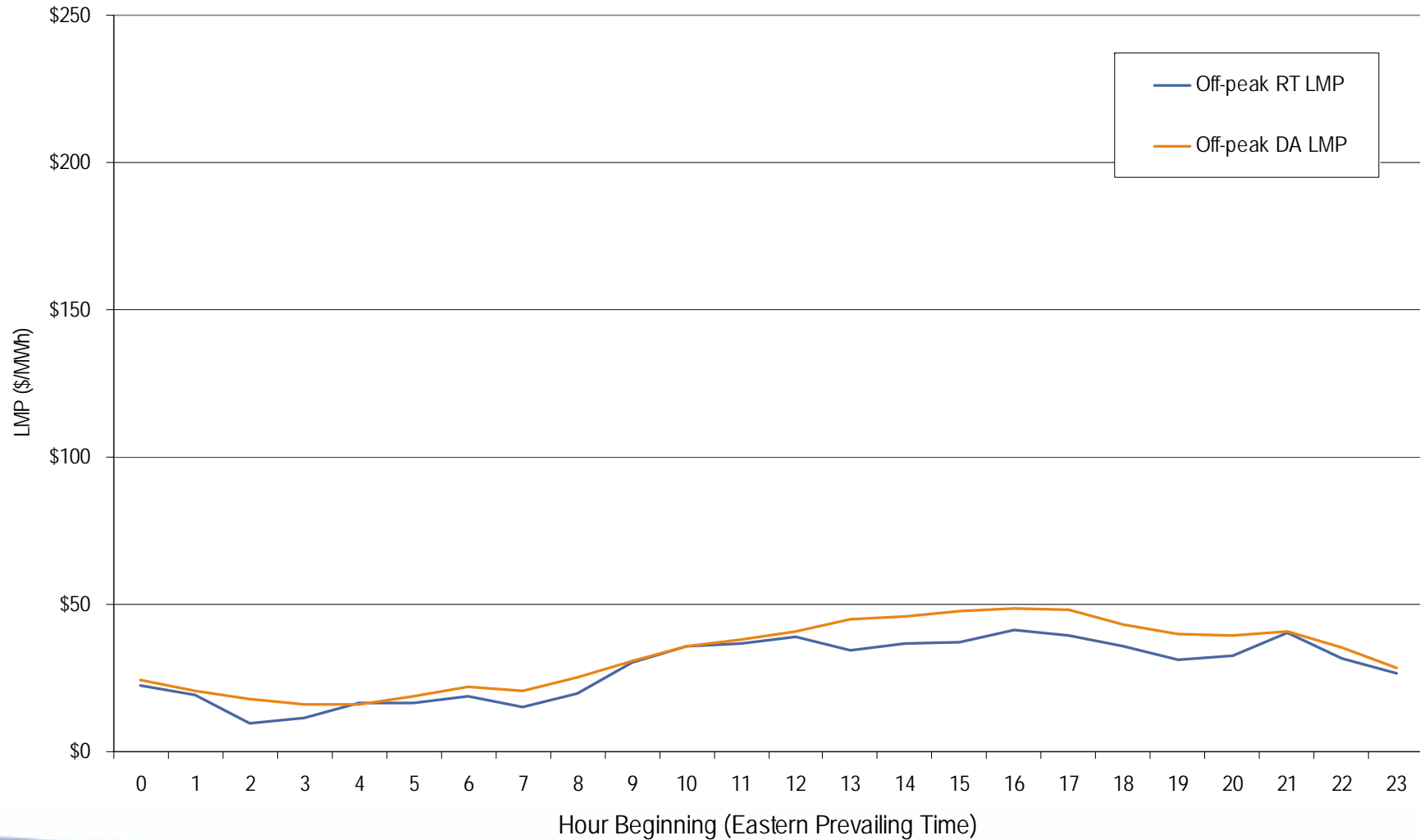
**ComEd day-ahead peak and off-peak average daily LMP
June 2006**



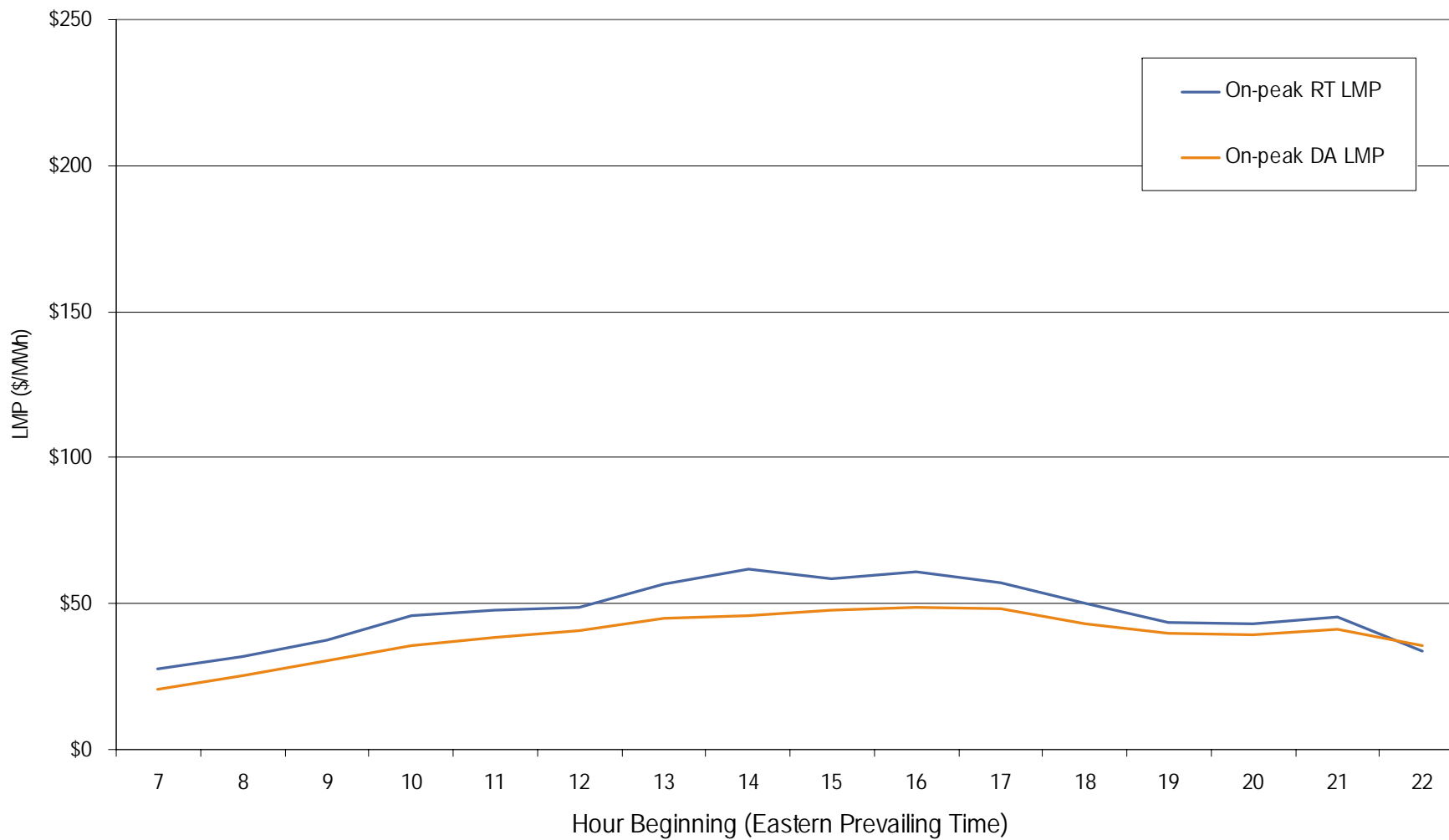
ComEd real-time peak and off-peak average daily LMP June 2006



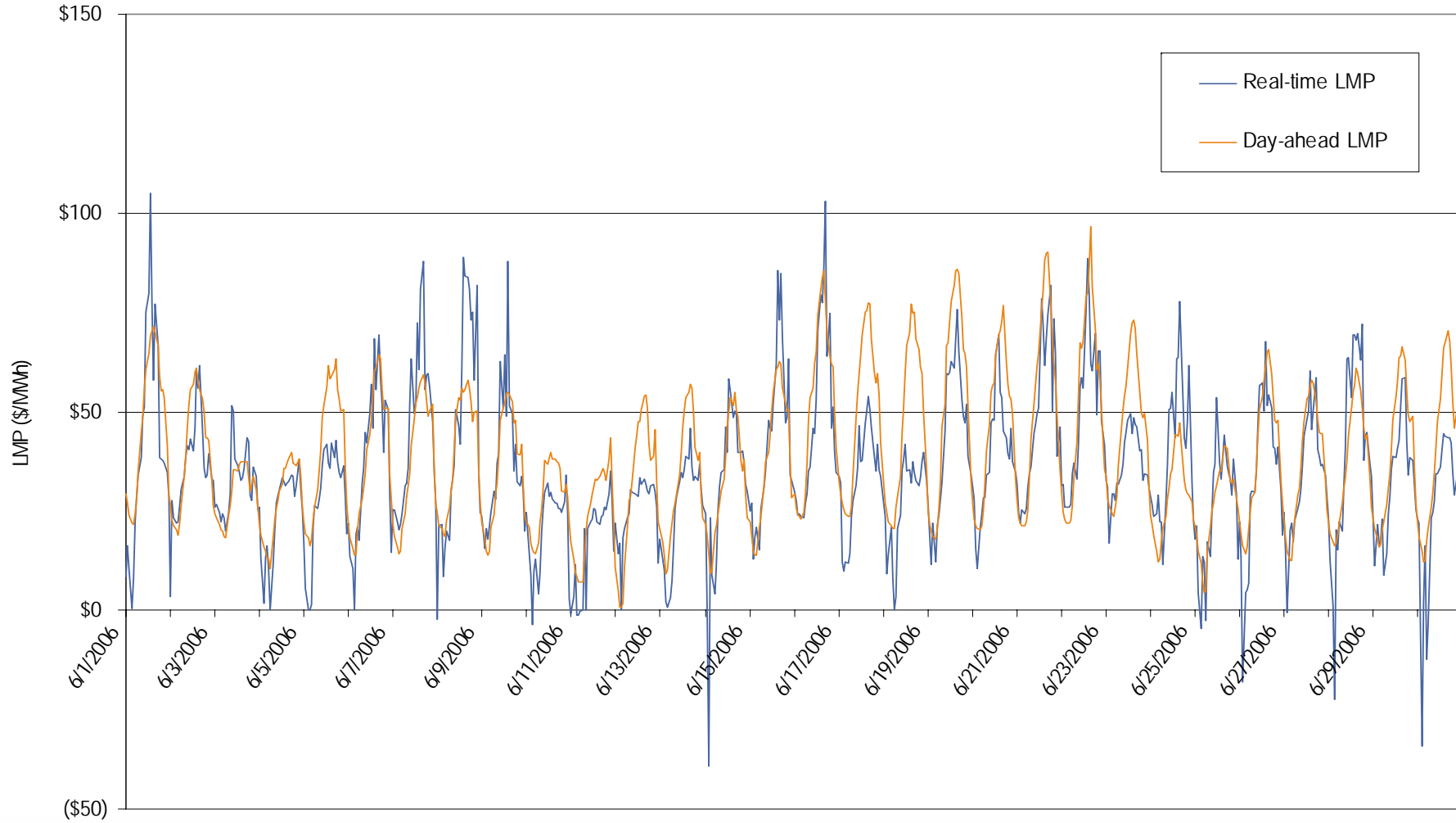
**ComEd real-time and day-ahead hourly average off-peak LMP
June 2006**



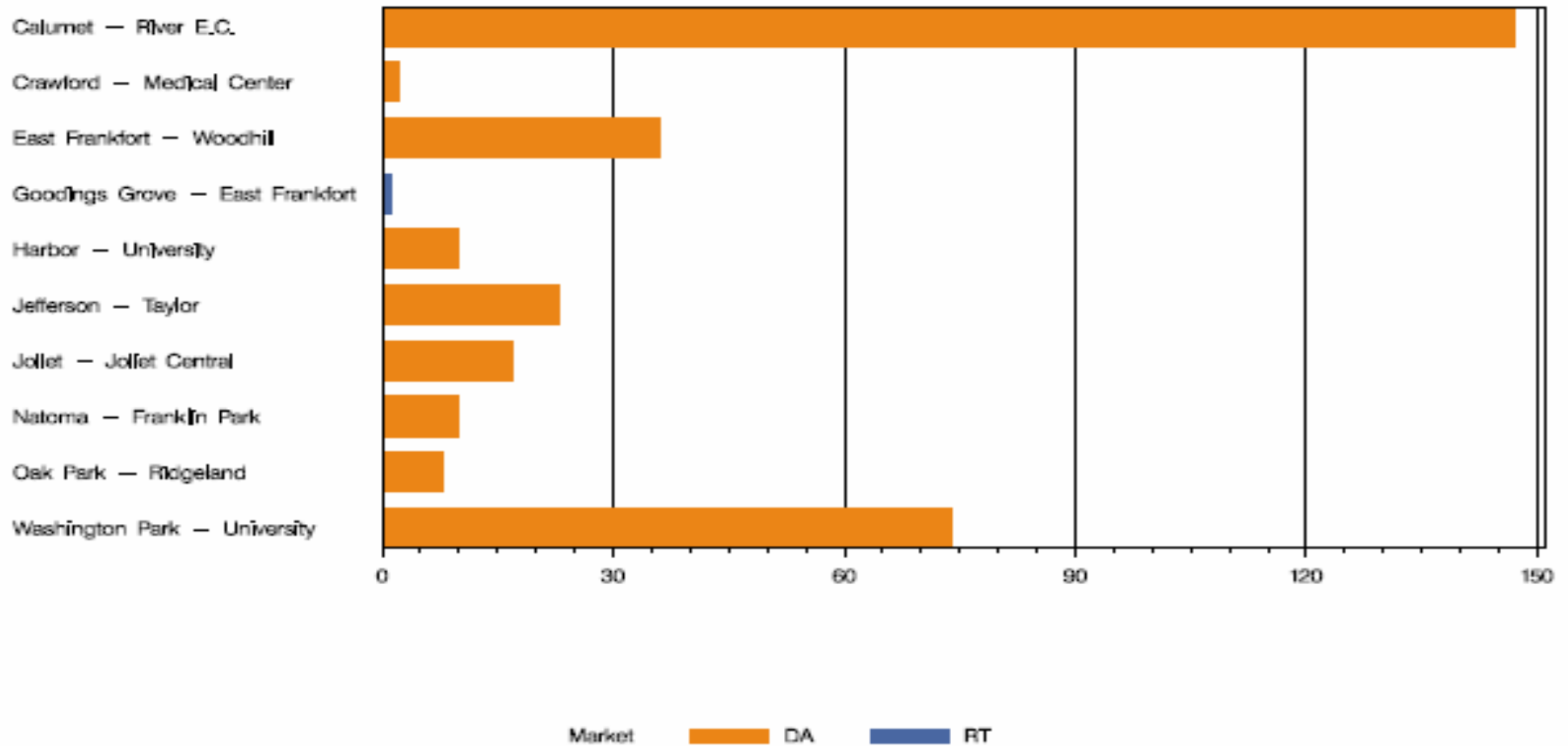
**ComEd real-time and day-ahead hourly average on-peak LMP
June 2006**



ComEd real-time and day-ahead hourly zonal LMP June 2006



COMED Congestion Event Hours by Facility June 2006



Offer Capping for April 2006:

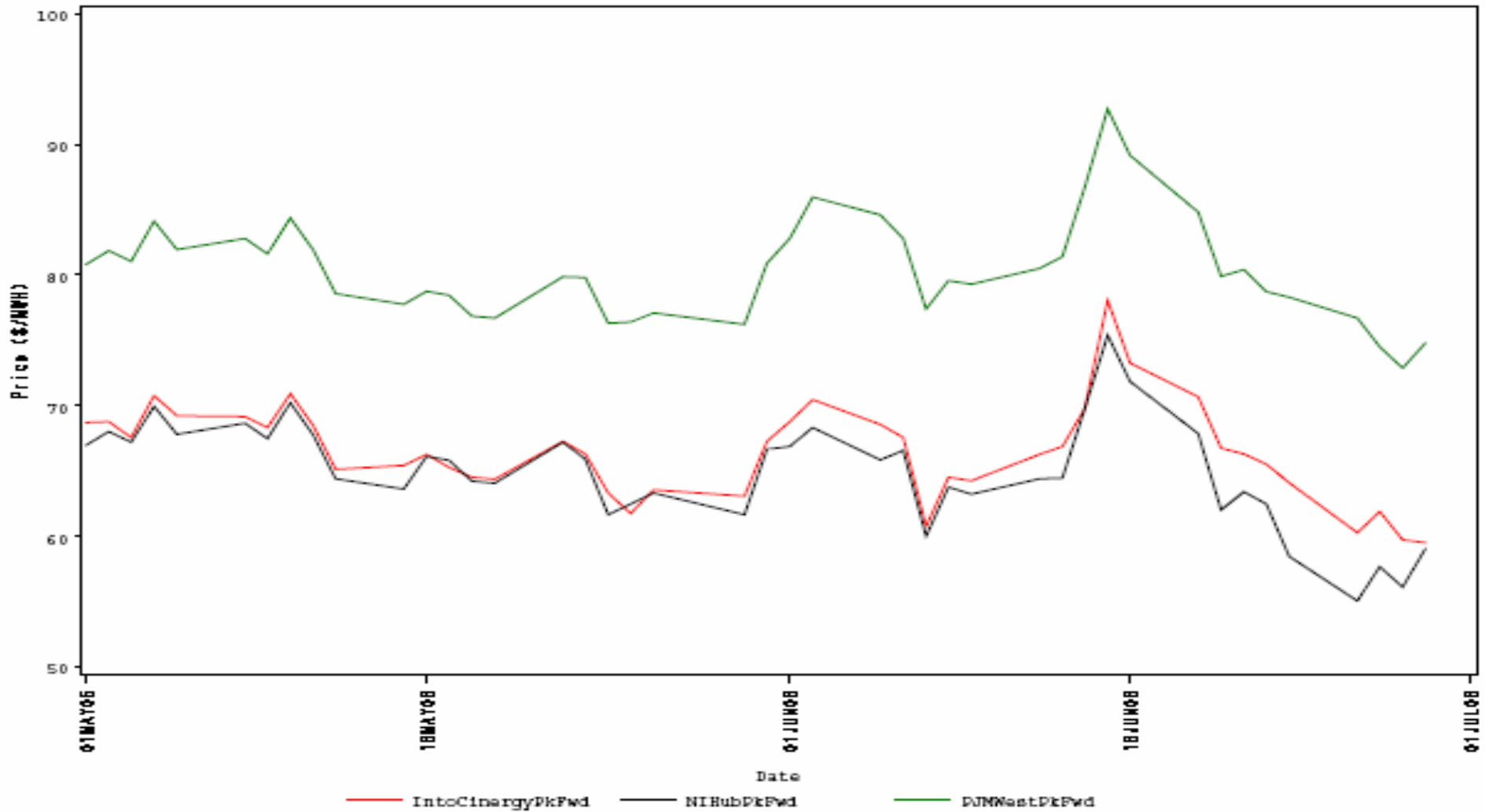
- There were 1 event hours of Real-Time congestion in ComEd in April.
 - There were 17 offer capped unit hours in Real-Time.
- There were 327 event hours of Day-Ahead congestion in ComEd in April.
 - There was no offer capping in Day-Ahead.

- There were no TLRs called for the ComEd Control Area in June.

- Forward prices for the July 2006 contract showed varying spreads during June.
 - Spreads reflect traders' expectations about future prices.
 - The maximum NIHub-CINergy spread was \$0.00 per MWh during June.
 - The minimum NIHub-CINergy spread was -\$5.65 per MWh during June.
 - The average NIHub-CINergy spread was -\$2.44 per MWh during June.
 - The NIHub-CINergy spread was -\$0.45 per MWh on the final trading day for the July 2006 contract.

Cinergy, NIHub and PJM West Forward Prices

contract=Jul06



- Forward prices for the August 2006 contract showed varying spreads during June.
 - Spreads reflect traders' expectations about future prices.
 - The maximum NIHub-CINergy spread was \$2.55 per MWh during June.
 - The minimum NIHub-CINergy spread was -\$6.85 per MWh during June.
 - The average NIHub-CINergy spread was -\$2.33 per MWh during June.
 - The NIHub-CINergy spread was -\$0.05 per MWh on the final trading day of June for the August 2006 contract.

Cinergy, NIHub and PJM West Forward Prices

contract=Aug06

