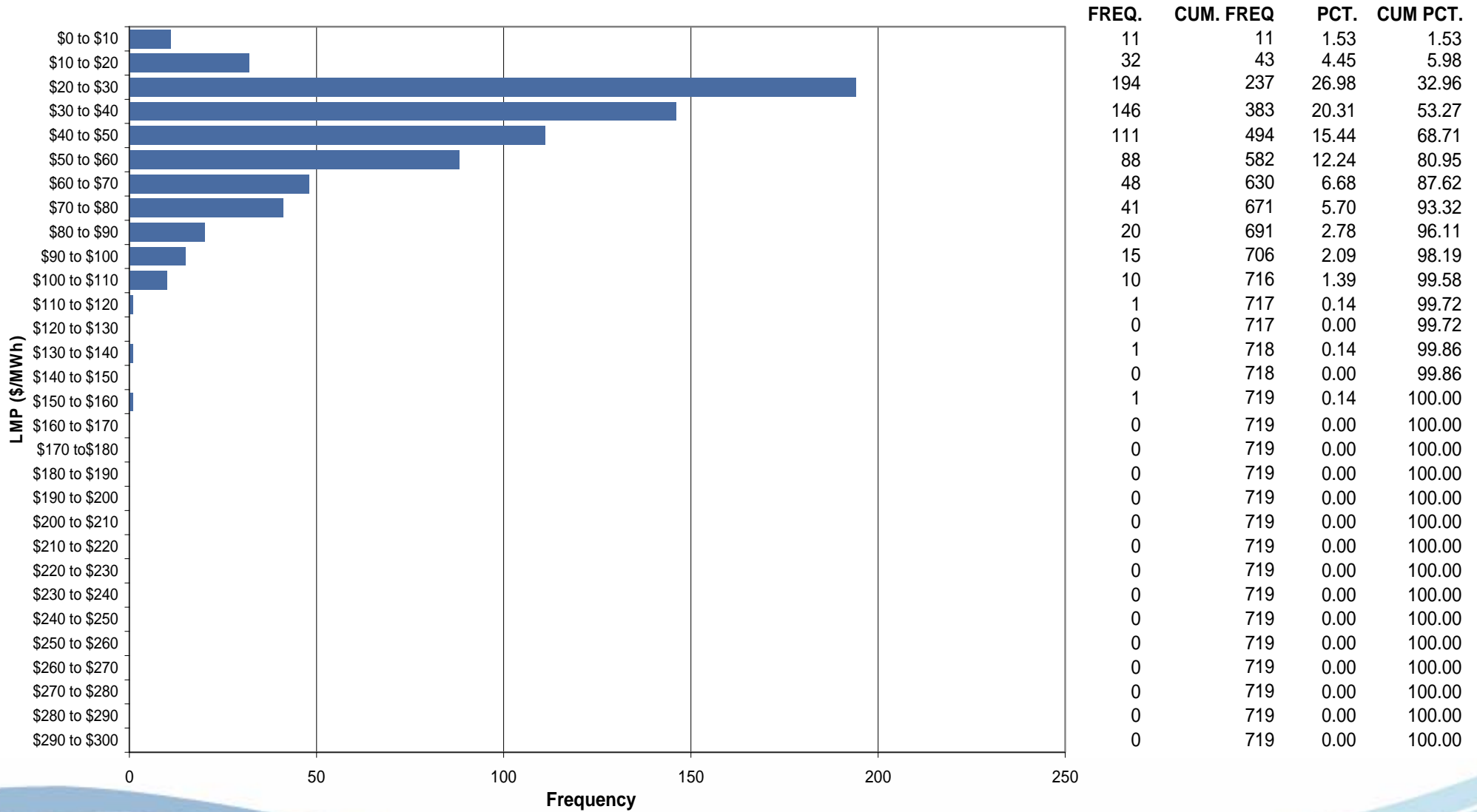




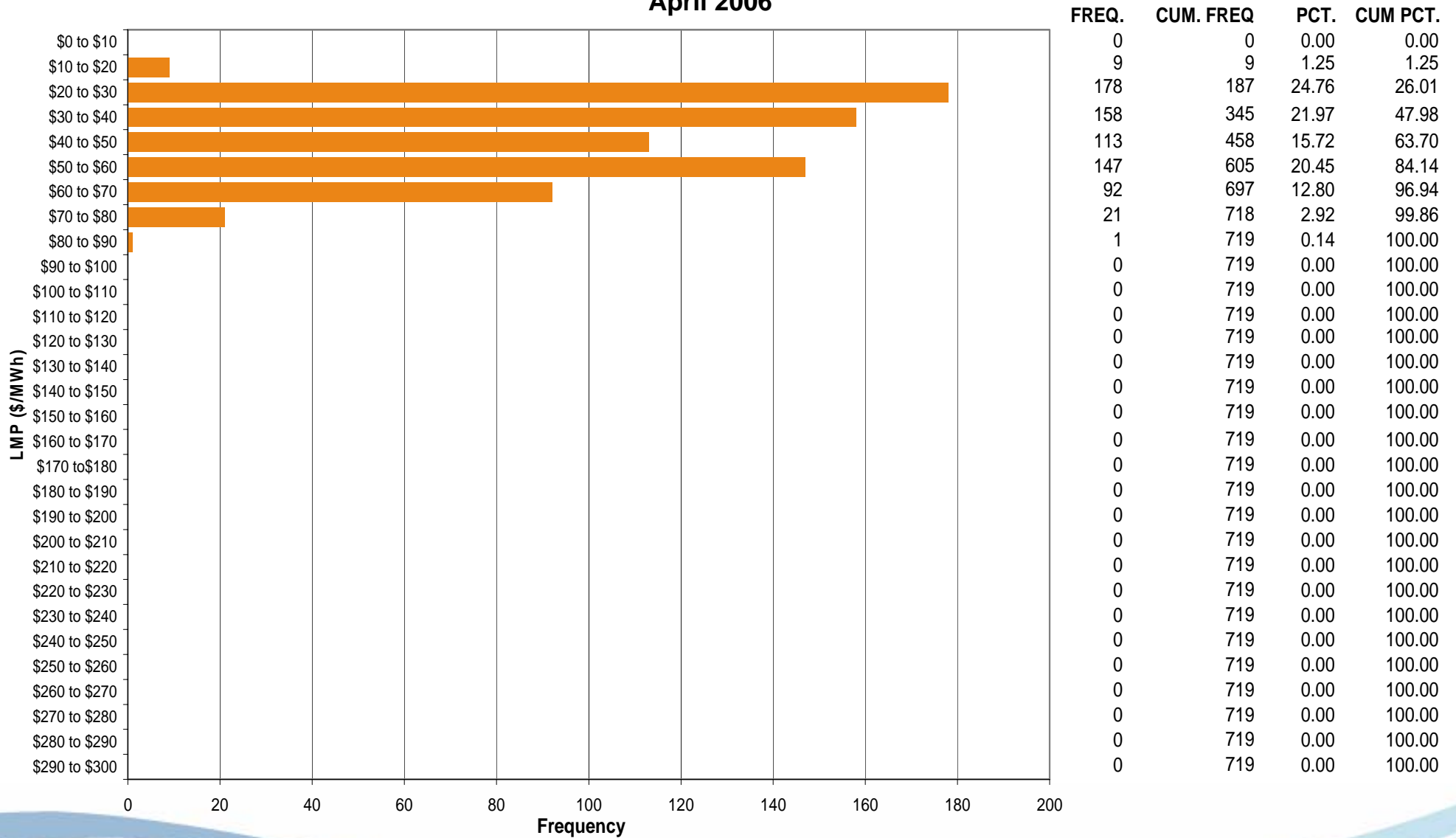
# ComEd Control Zone Market Monitoring Report for April 2006

Market Monitoring Unit  
March 2006

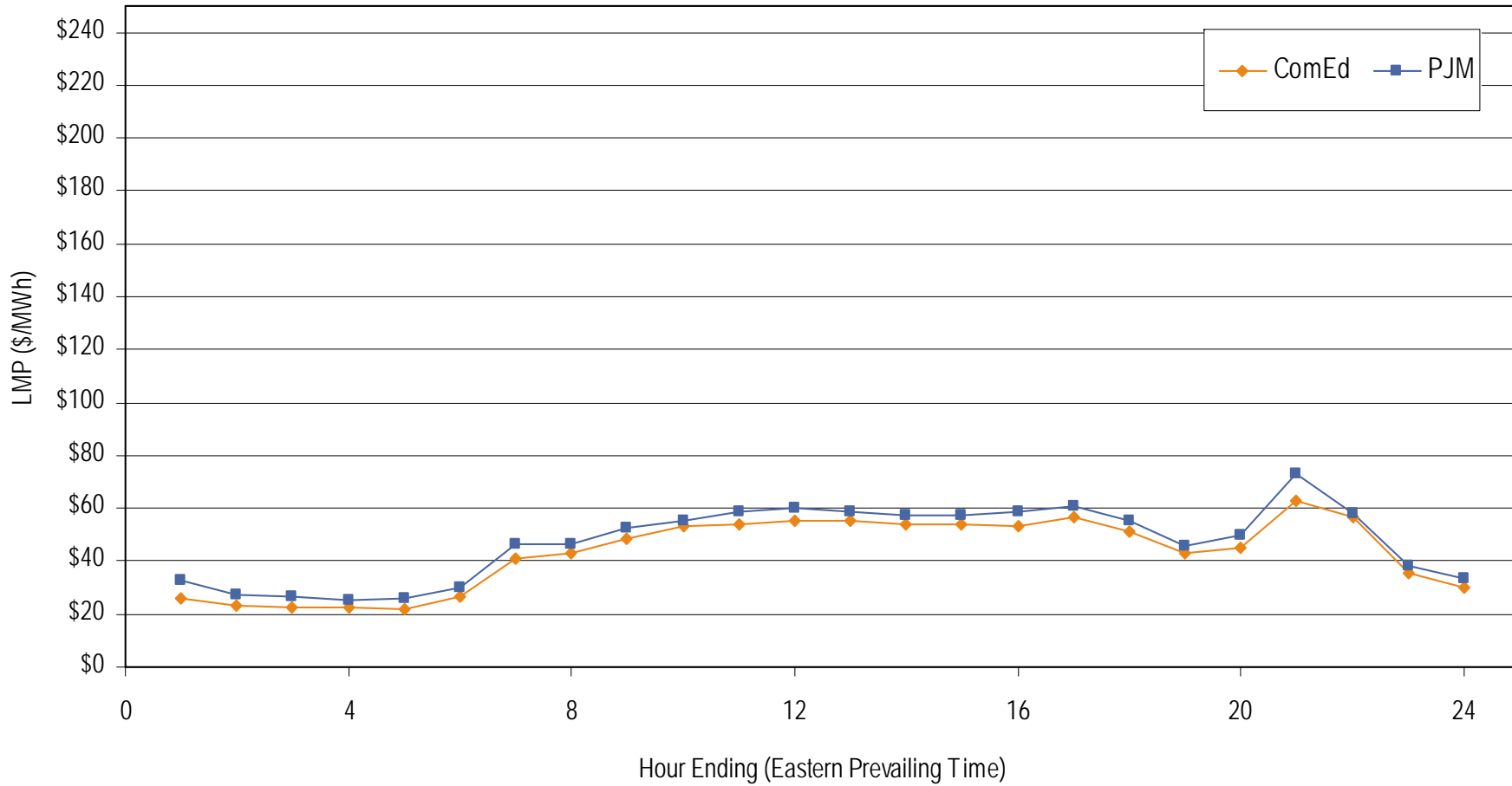
### Frequency distribution by hours of ComEd real-time LMP April 2006



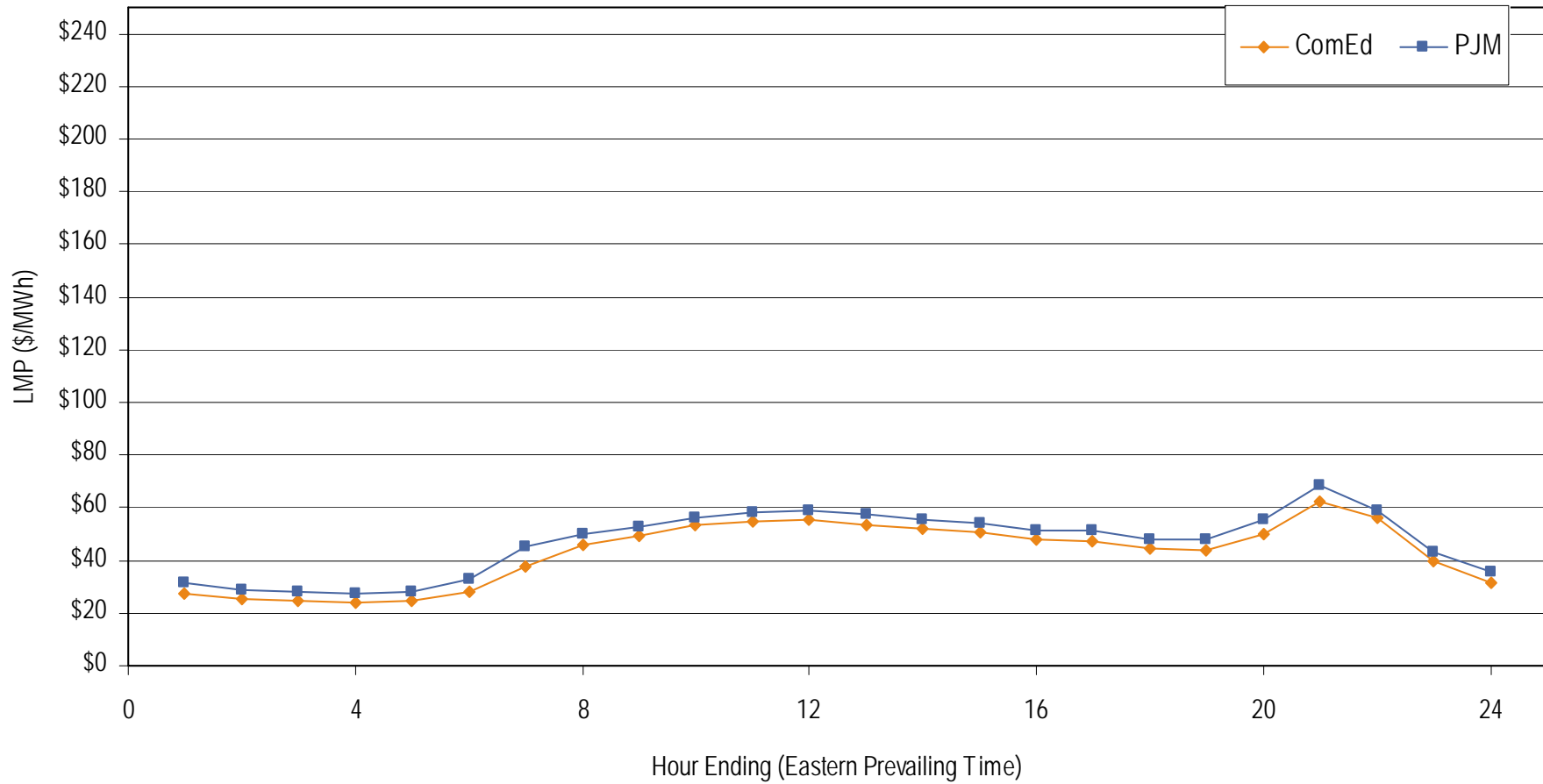
### Frequency distribution by hours of ComEd day-ahead LMP April 2006



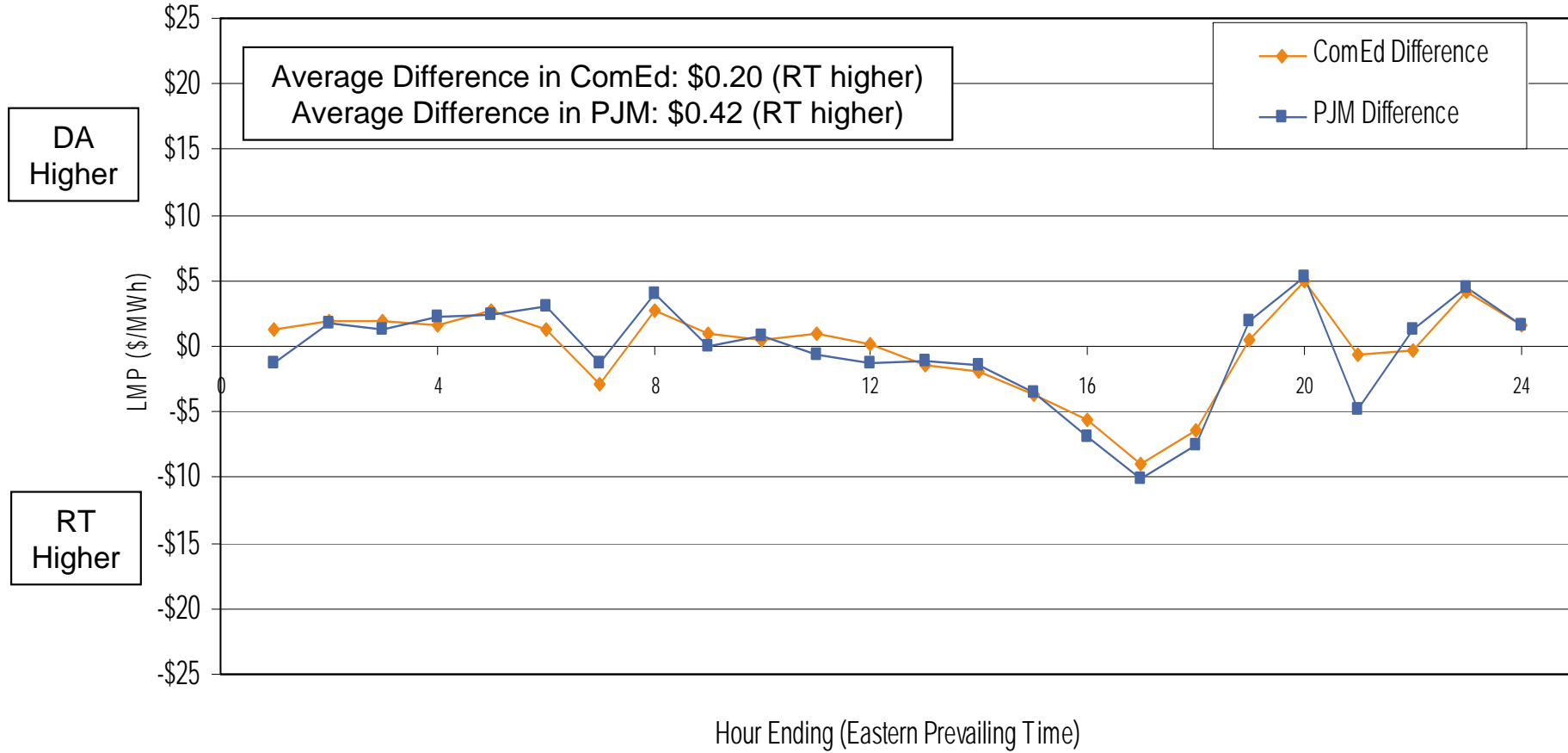
**Average hourly real-time LMP  
April 2006**



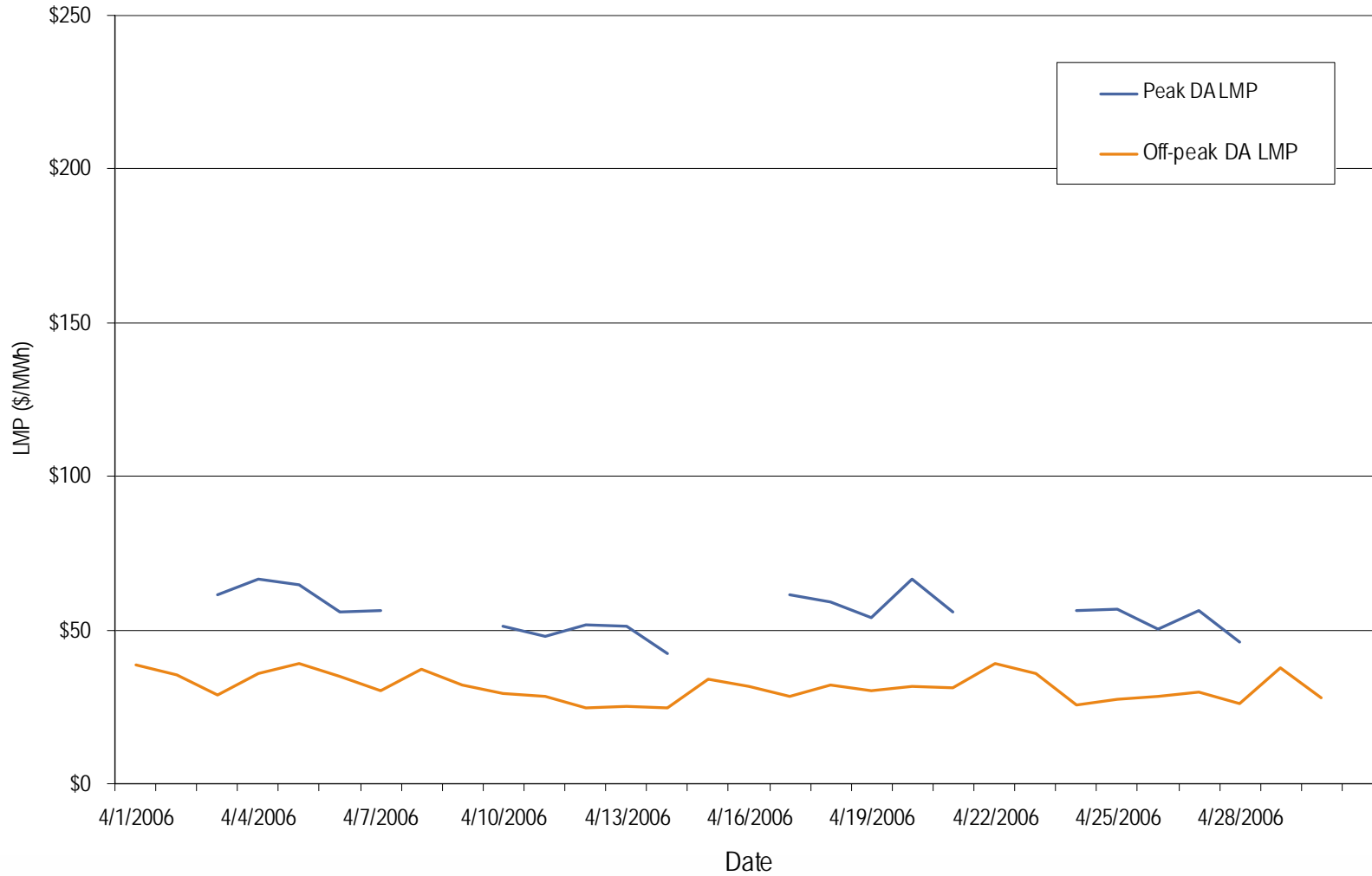
**Average hourly day-ahead LMP  
April 2006**



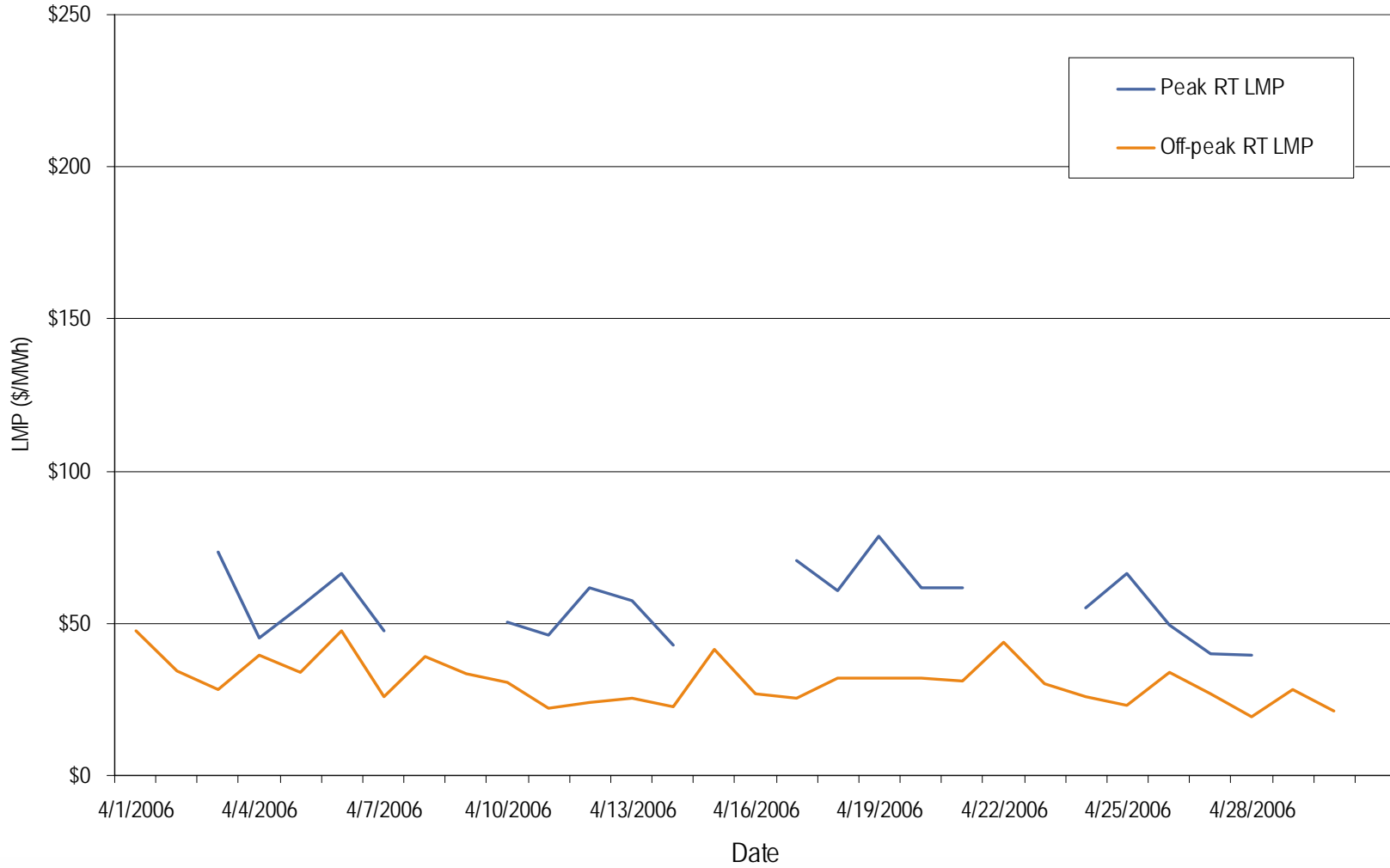
**Average hourly difference of day-ahead and real-time LMPs  
April 2006**



**ComEd day-ahead peak and off-peak average daily LMP  
April 2006**

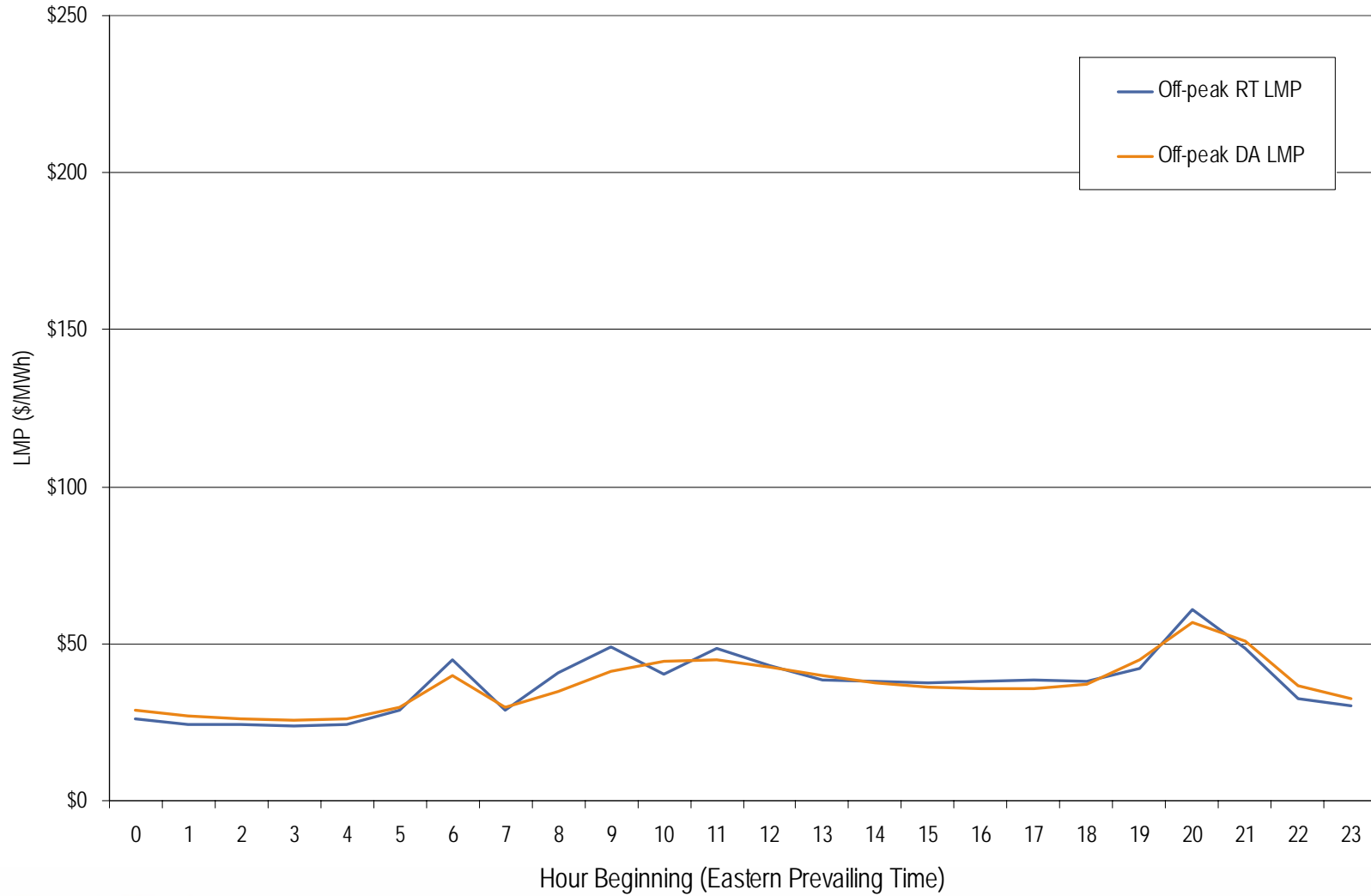


## ComEd real-time peak and off-peak average daily LMP April 2006

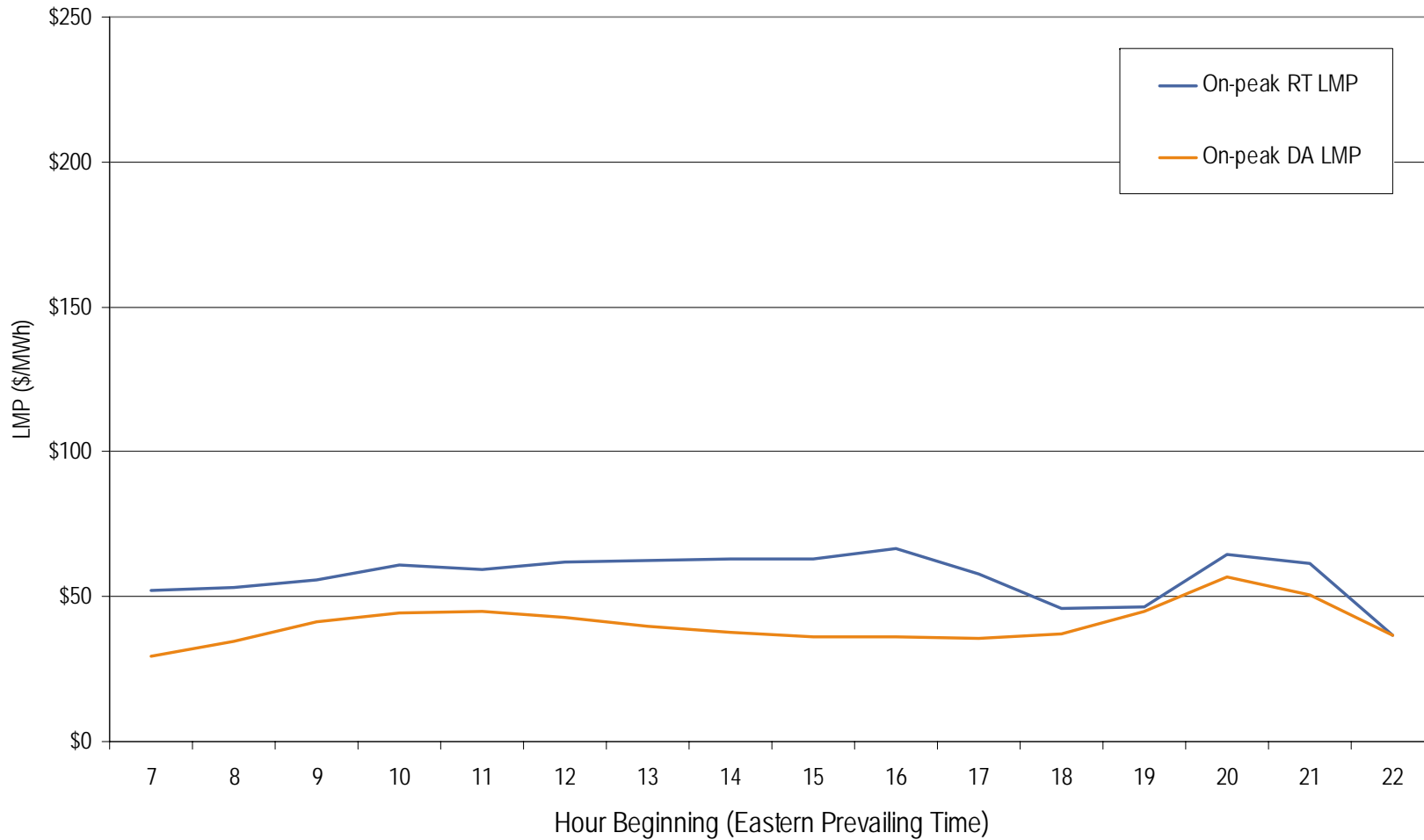




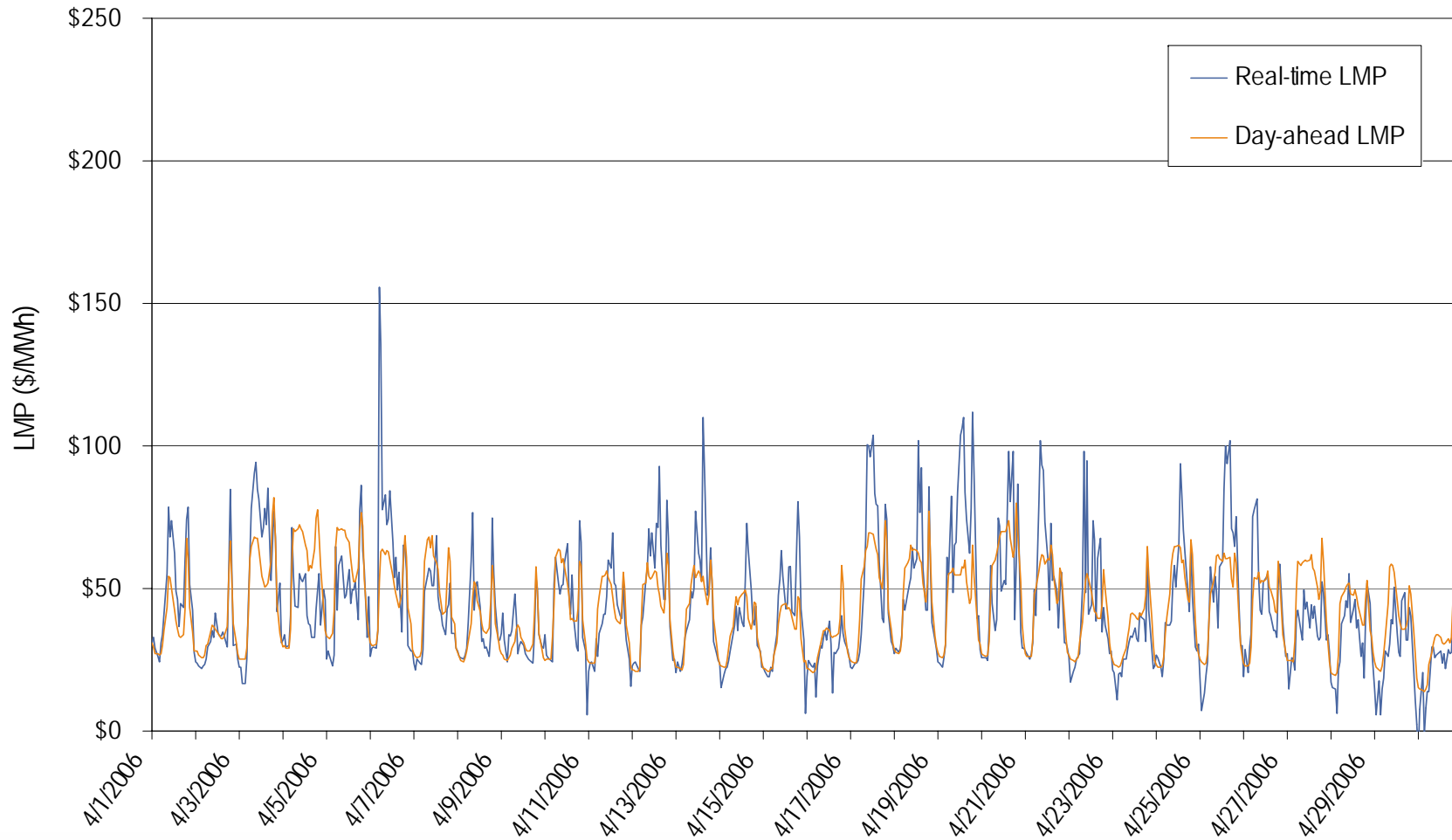
**ComEd real-time and day-ahead hourly average off-peak LMP  
April 2006**



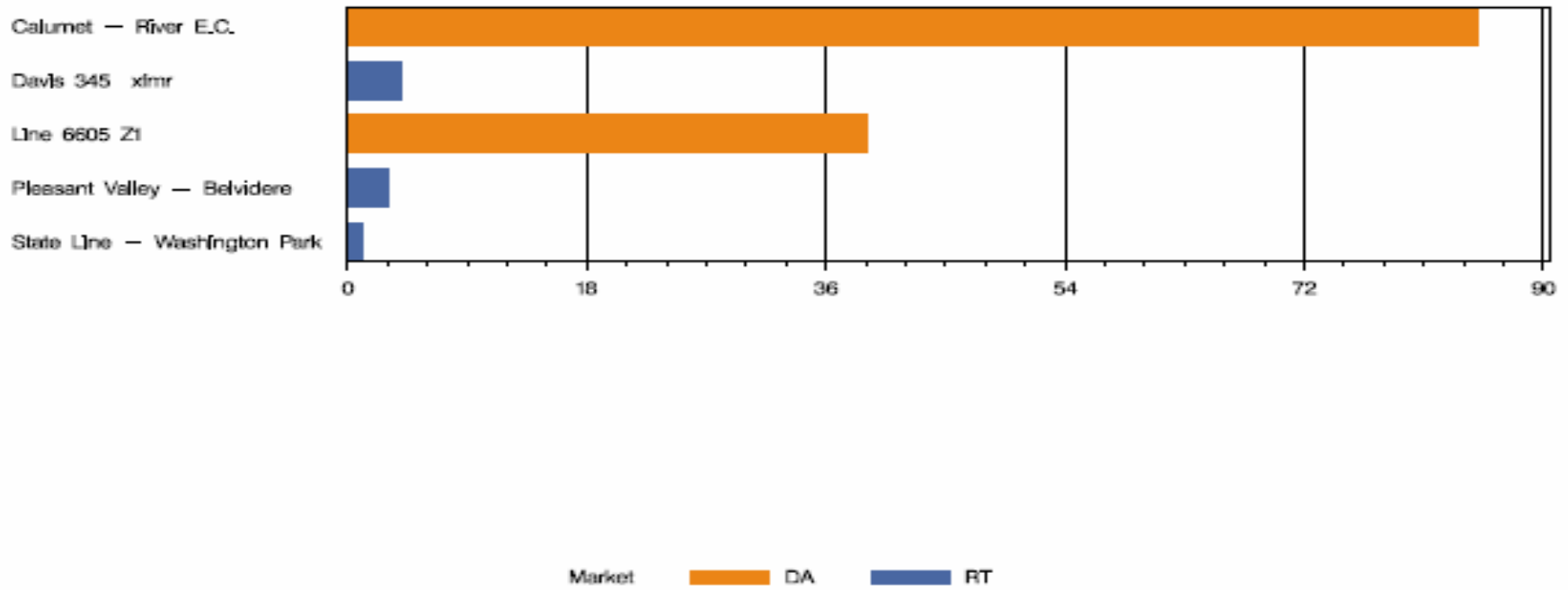
**ComEd real-time and day-ahead hourly average on-peak LMP  
April 2006**



## ComEd real-time and day-ahead hourly zonal LMP April 2006



## COMED Congestion Event Hours by Facility April 2006



## Offer Capping for April 2006:

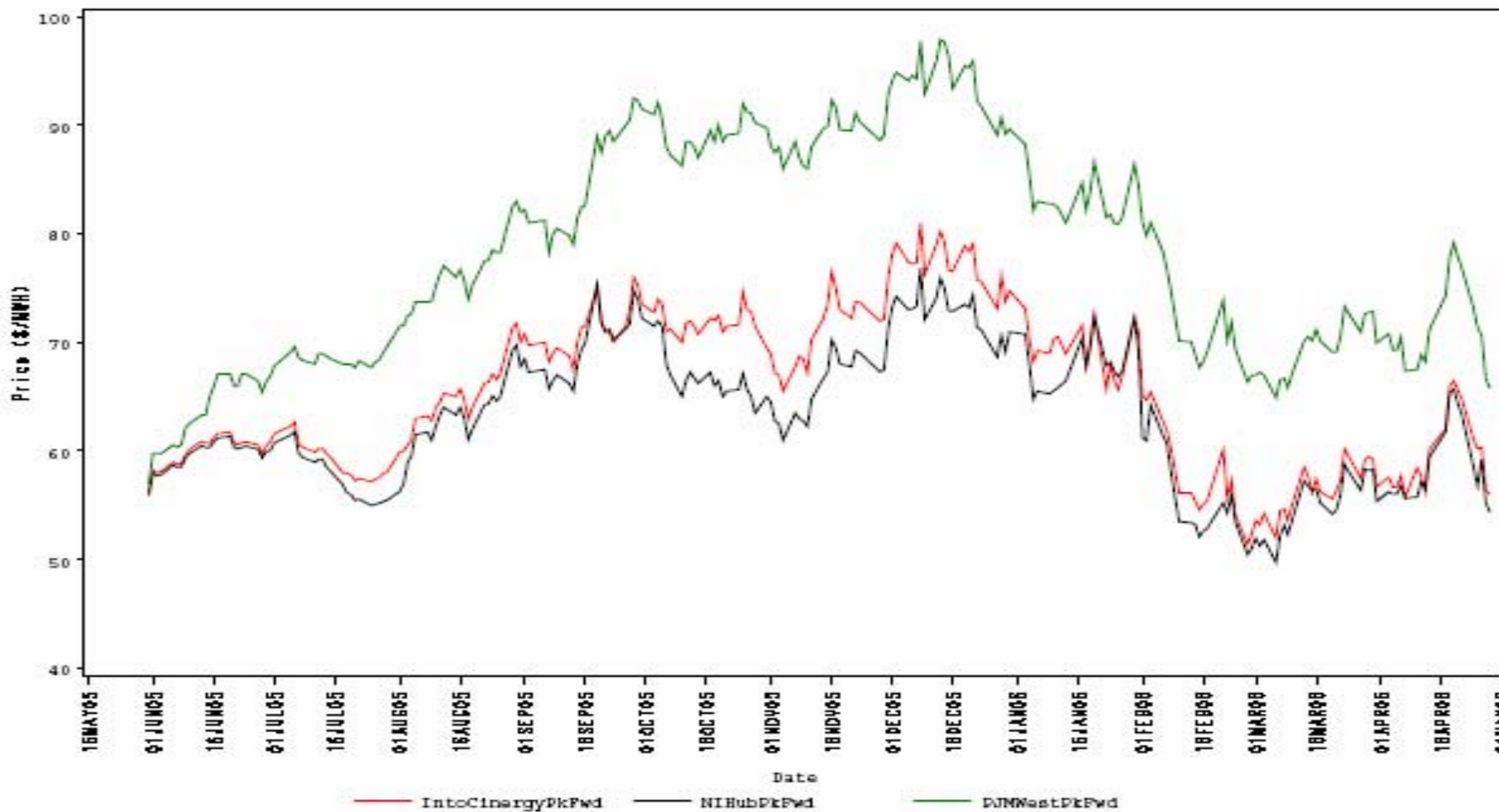
- There were 8 event hours of Real-Time congestion in ComEd in April.
  - There were 48 offer capped unit hours in Real-Time.
- There were 124 event hours of Day-Ahead congestion in ComEd in April.
  - There was no offer capping in Day-Ahead.

- There were no TLRs called for the ComEd Control Area in April.

- Forward prices for the May 2006 contract showed varying spreads during April.
  - Spreads reflect traders' expectations about future prices.
  - The maximum NIHub-CINergy spread was \$2.25 per MWh during April.
  - The minimum NIHub-CINergy spread was -\$1.05 per MWh during April.
  - The average NIHub-CINergy spread was \$0.73 per MWh during April.
  - The NIHub-CINergy spread was \$1.30 per MWh on the final trading day for the May 2006 contract.

## Cinergy, NIHub and PJM West Forward Prices

contract=Jun06





- Forward prices for the June 2006 contract showed varying spreads during April.
  - Spreads reflect traders' expectations about future prices.
  - The maximum NIHub-CINergy spread was \$0.30 per MWh during April.
  - The minimum NIHub-CINergy spread was -\$3.45 per MWh during April.
  - The average NIHub-CINergy spread was -\$2.16 per MWh during March.
  - The NIHub-CINergy spread was -\$1.60 per MWh on the final trading day of April for the June 2006 contract.

## Cinergy, NIHub and PJM West Forward Prices

contract=May06

