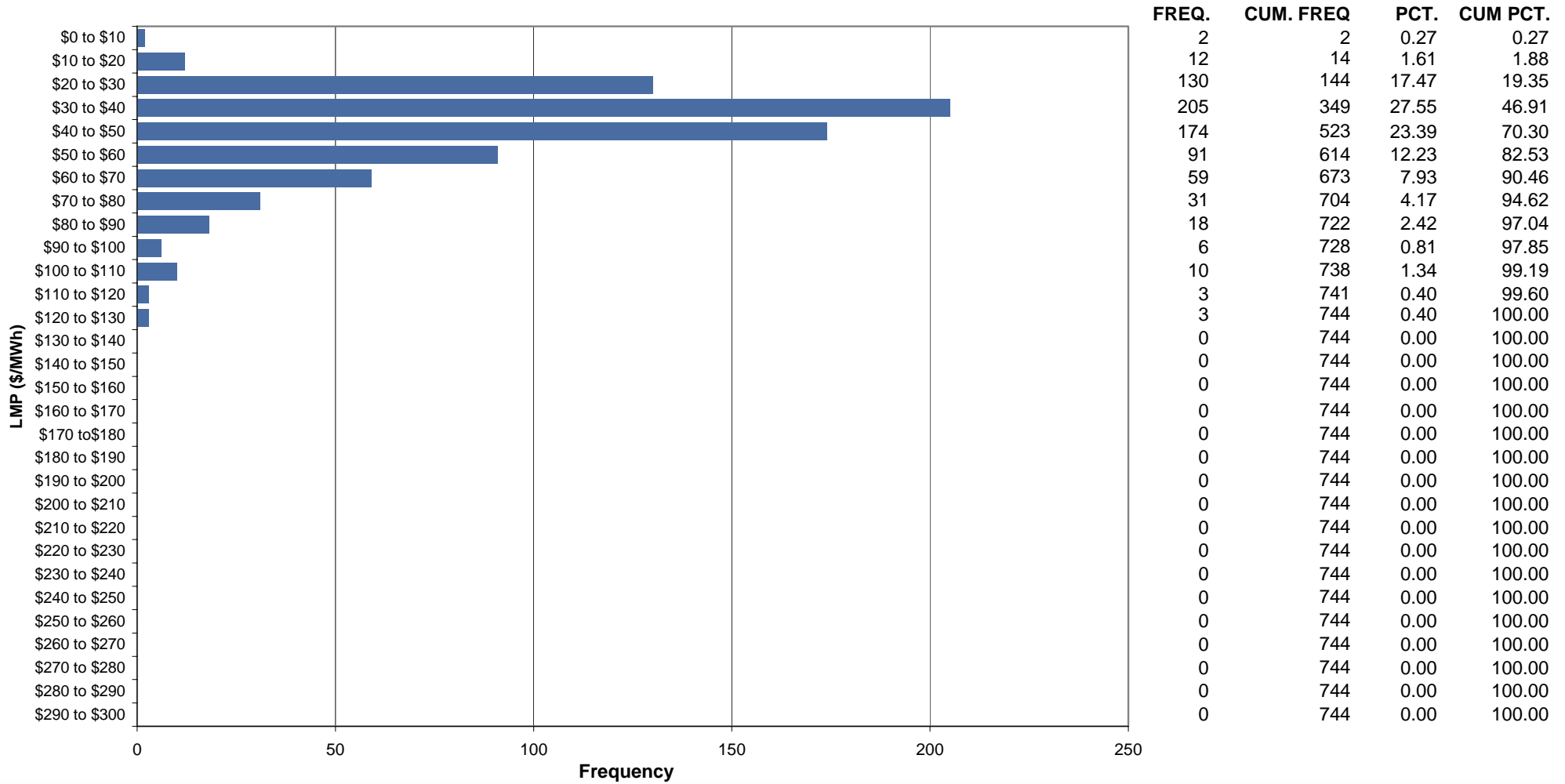




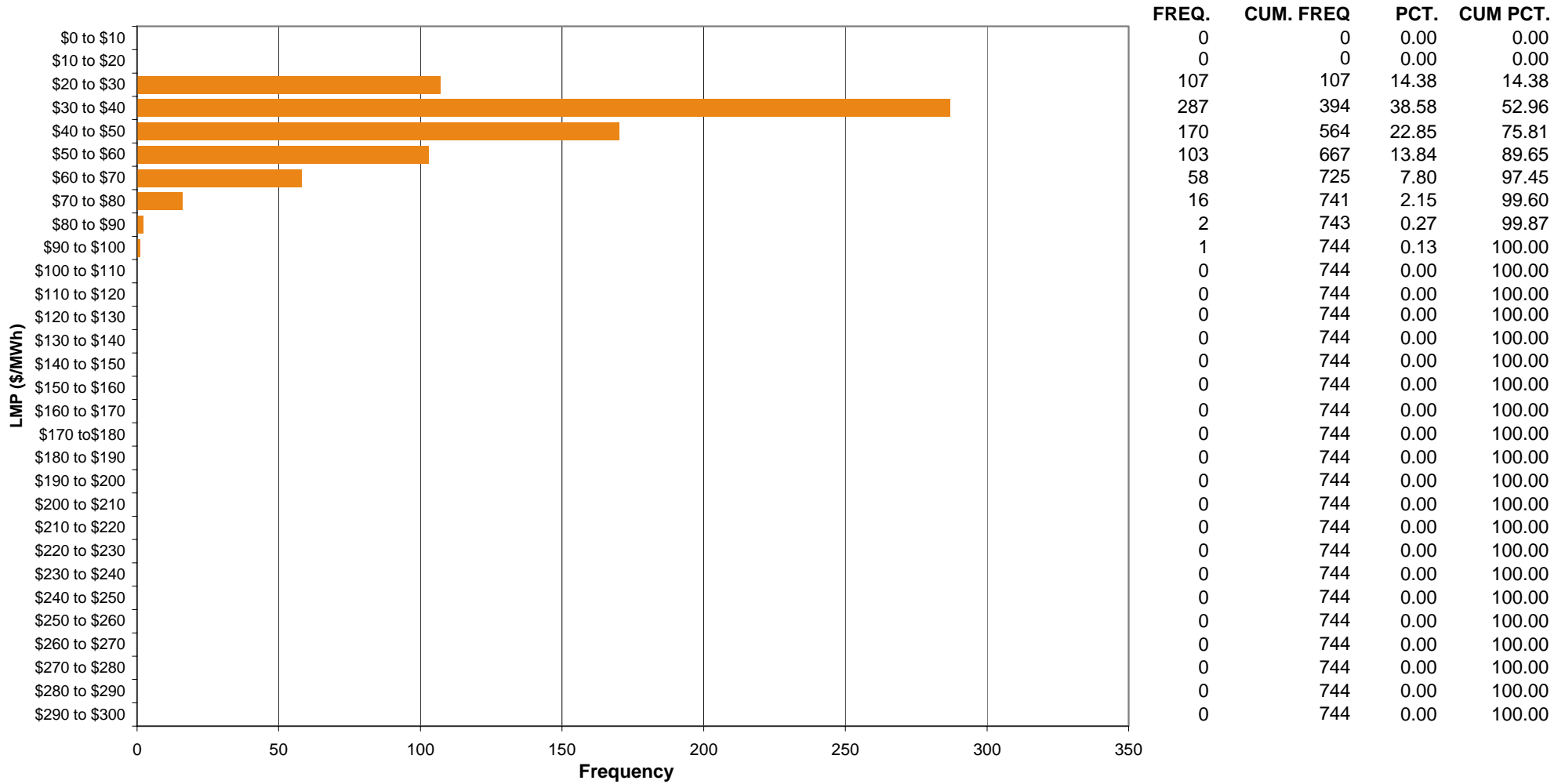
# AEP Control Zone Market Monitoring Report for March 2006

Market Monitoring Unit  
April 2006

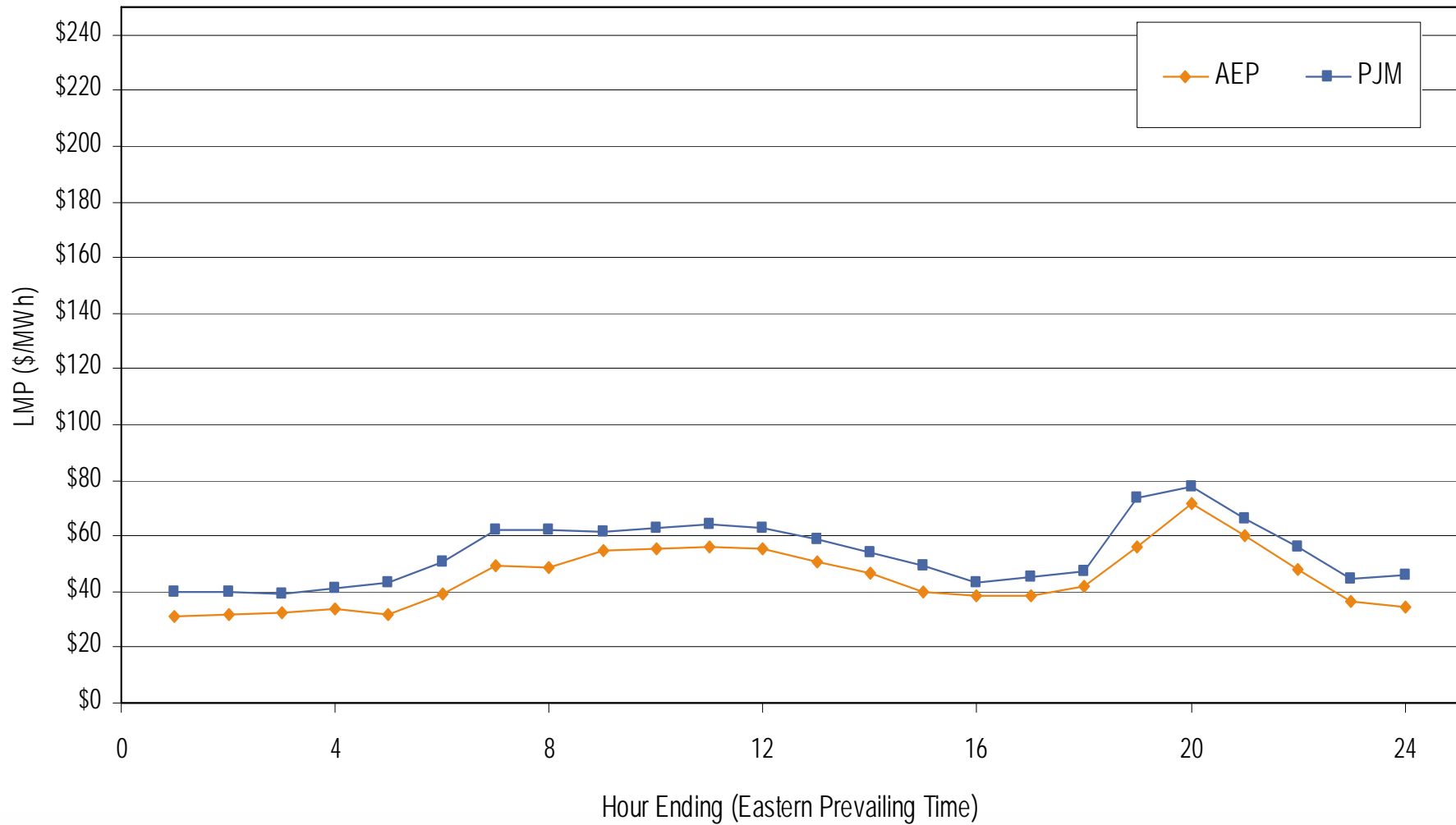
### Frequency distribution by hours of AEP real-time LMP March 2006



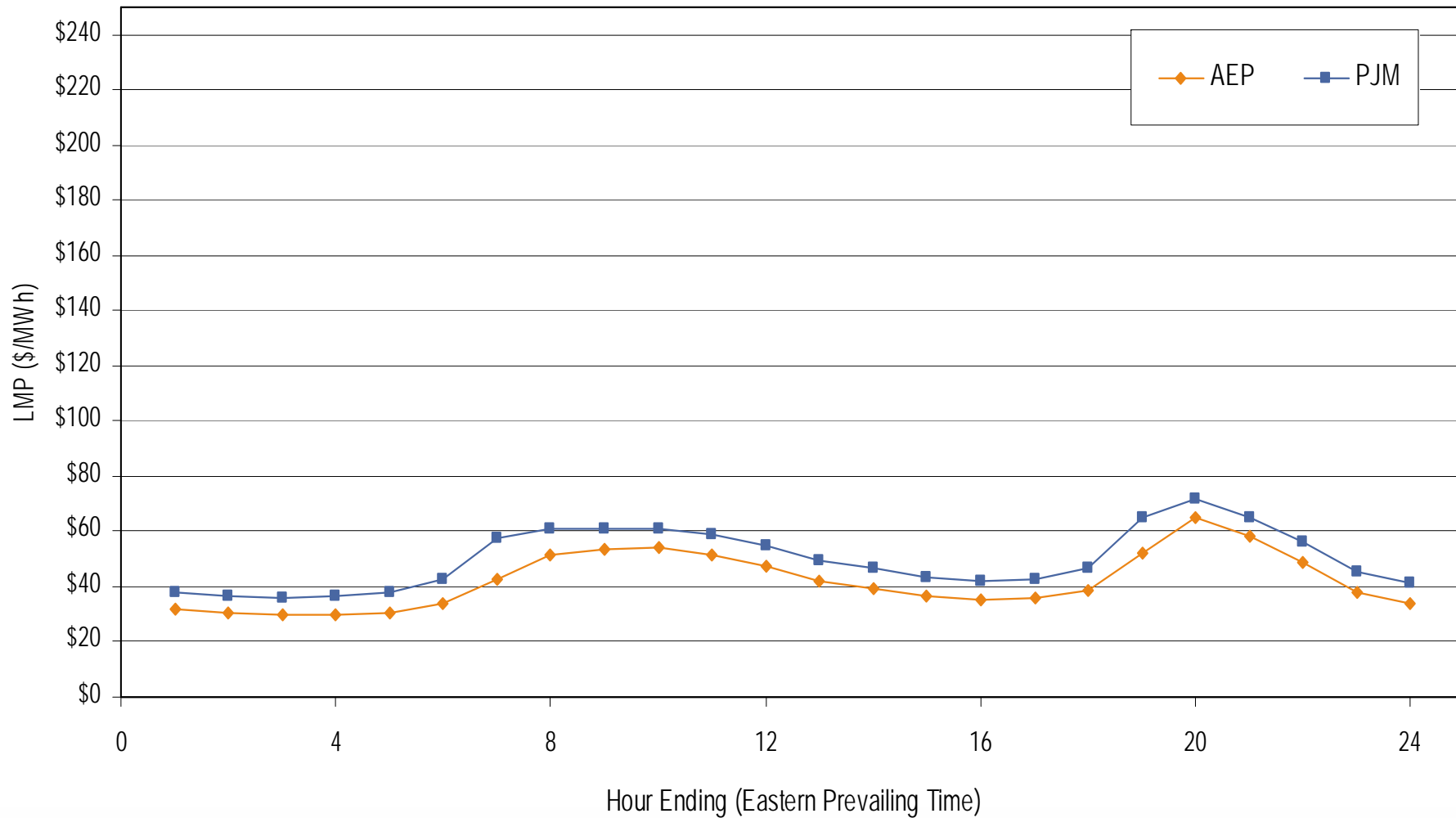
### Frequency distribution by hours of AEP day-ahead LMP March 2006



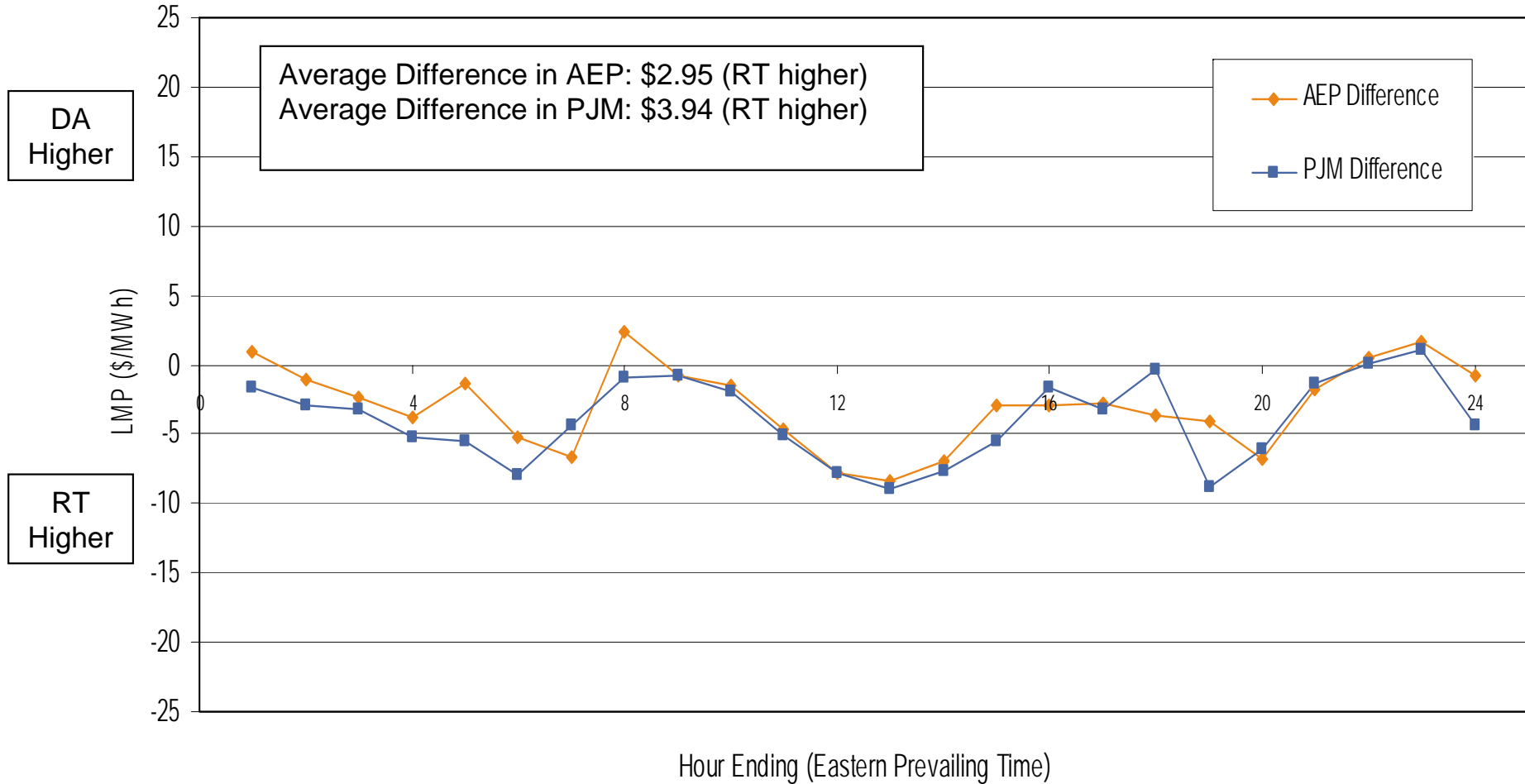
**Average hourly real-time LMP  
March 2006**



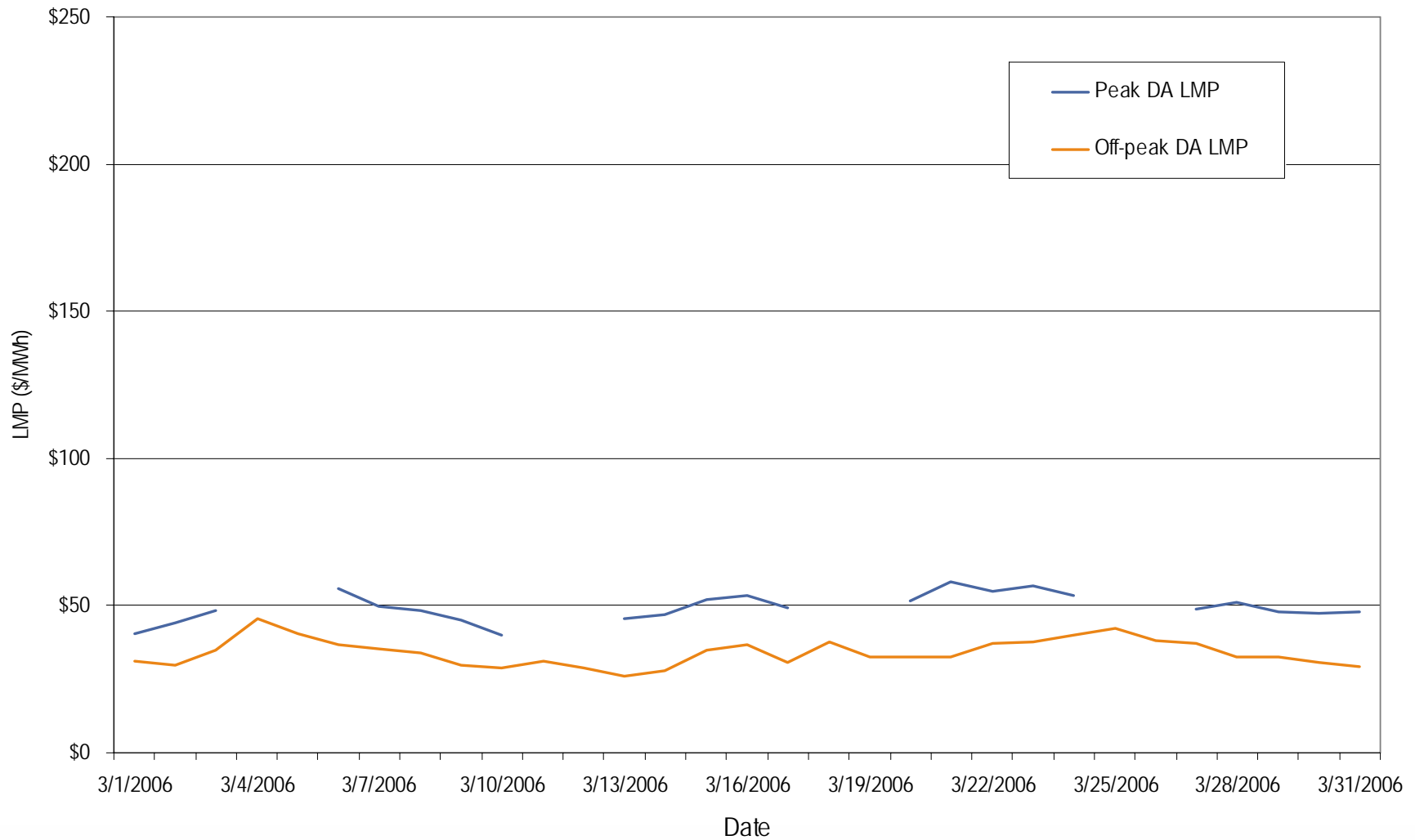
**Average hourly day-ahead LMP  
March 2006**



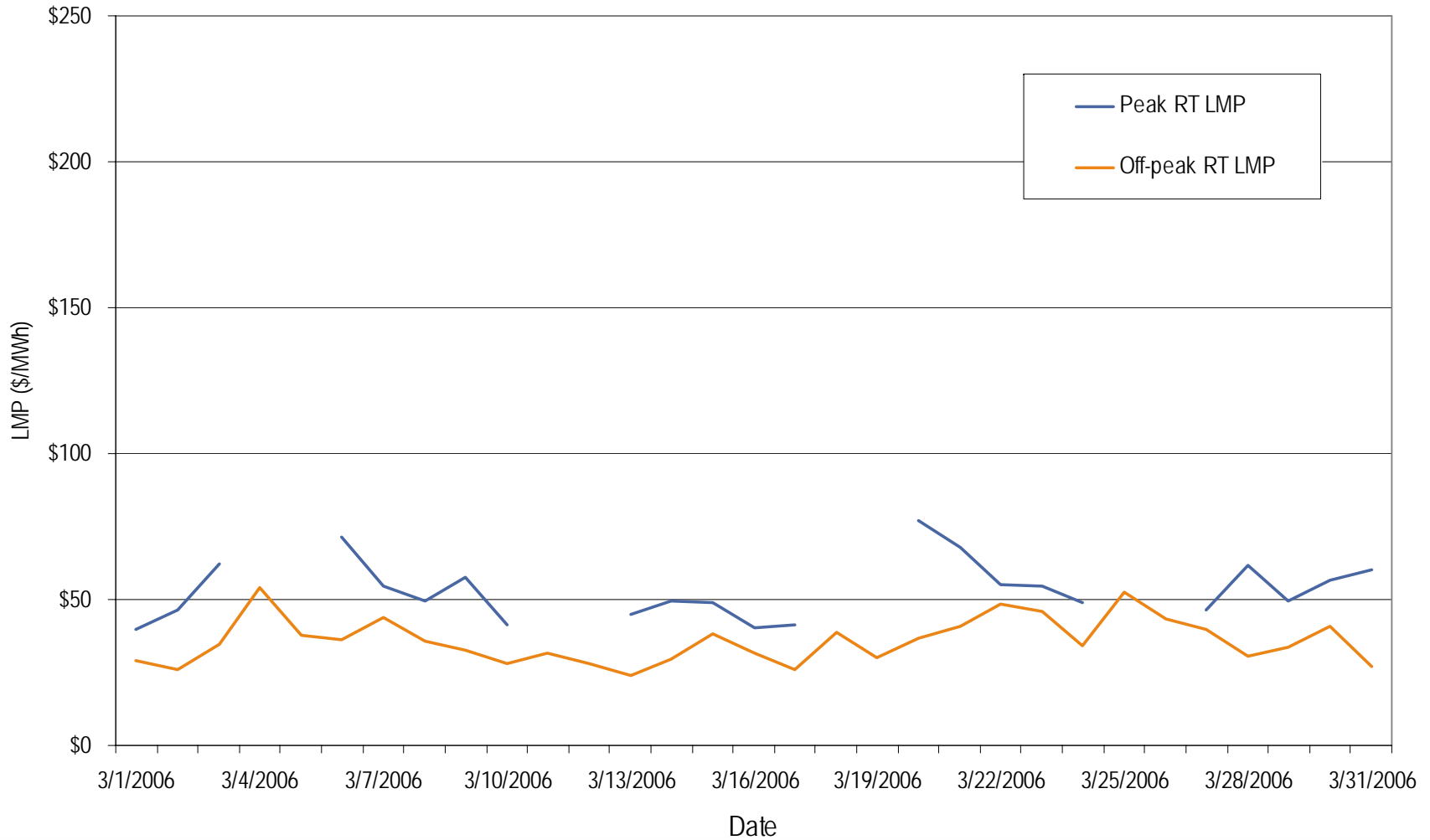
**Average hourly difference of day-ahead and real-time LMPs  
March 2006**



## AEP day-ahead peak and off-peak average daily LMP March 2006

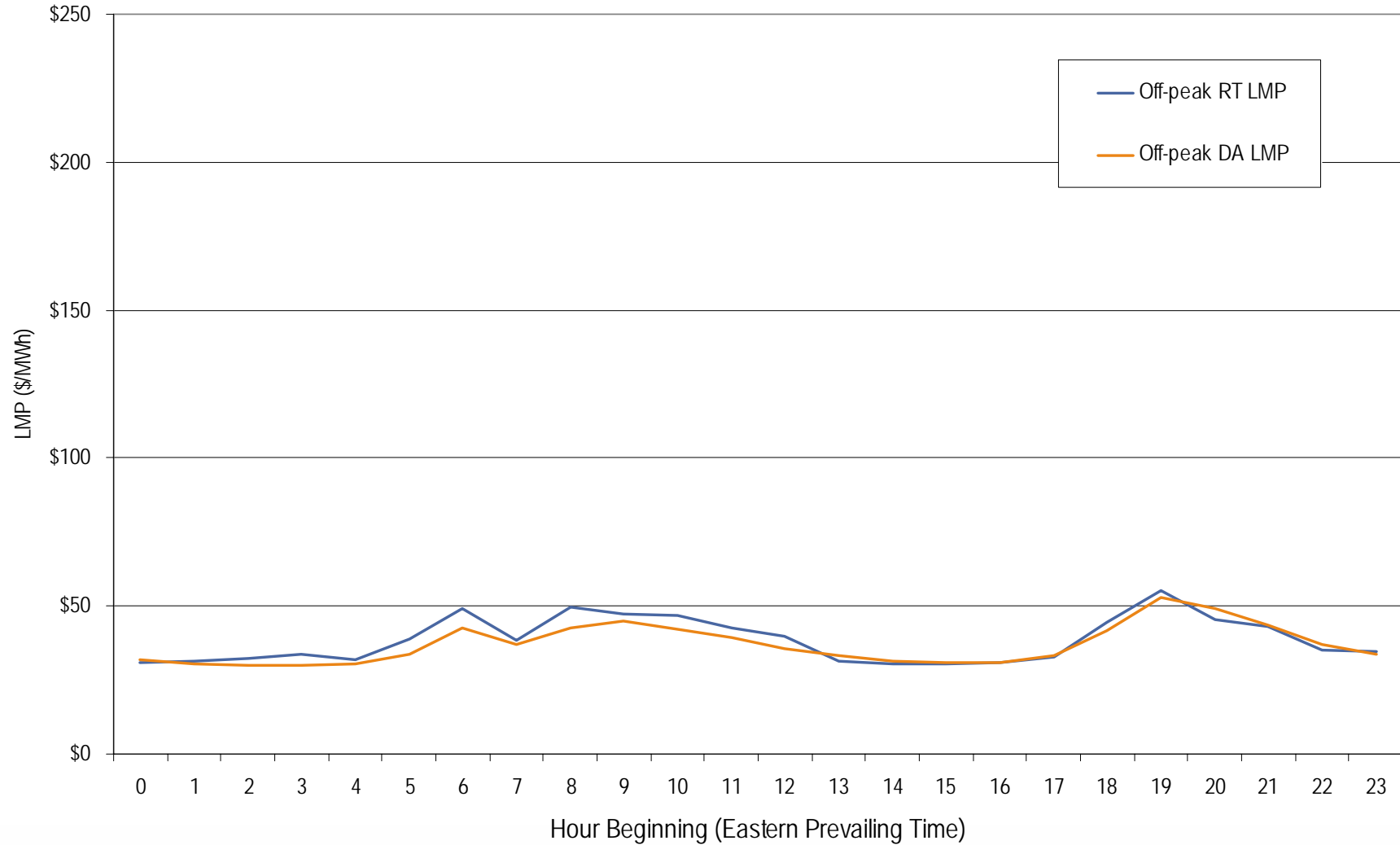


## AEP real-time peak and off-peak average daily LMP March 2006

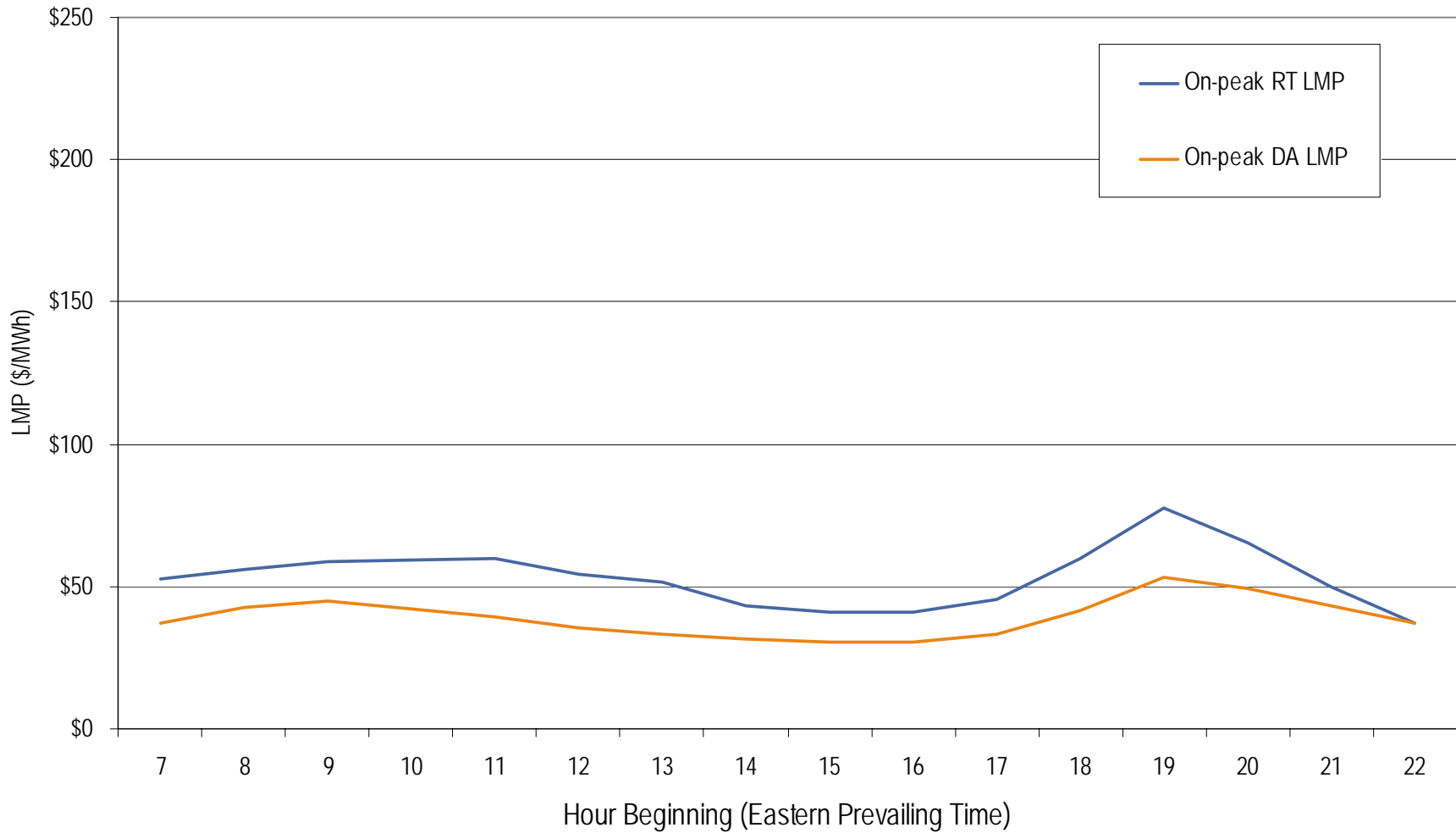




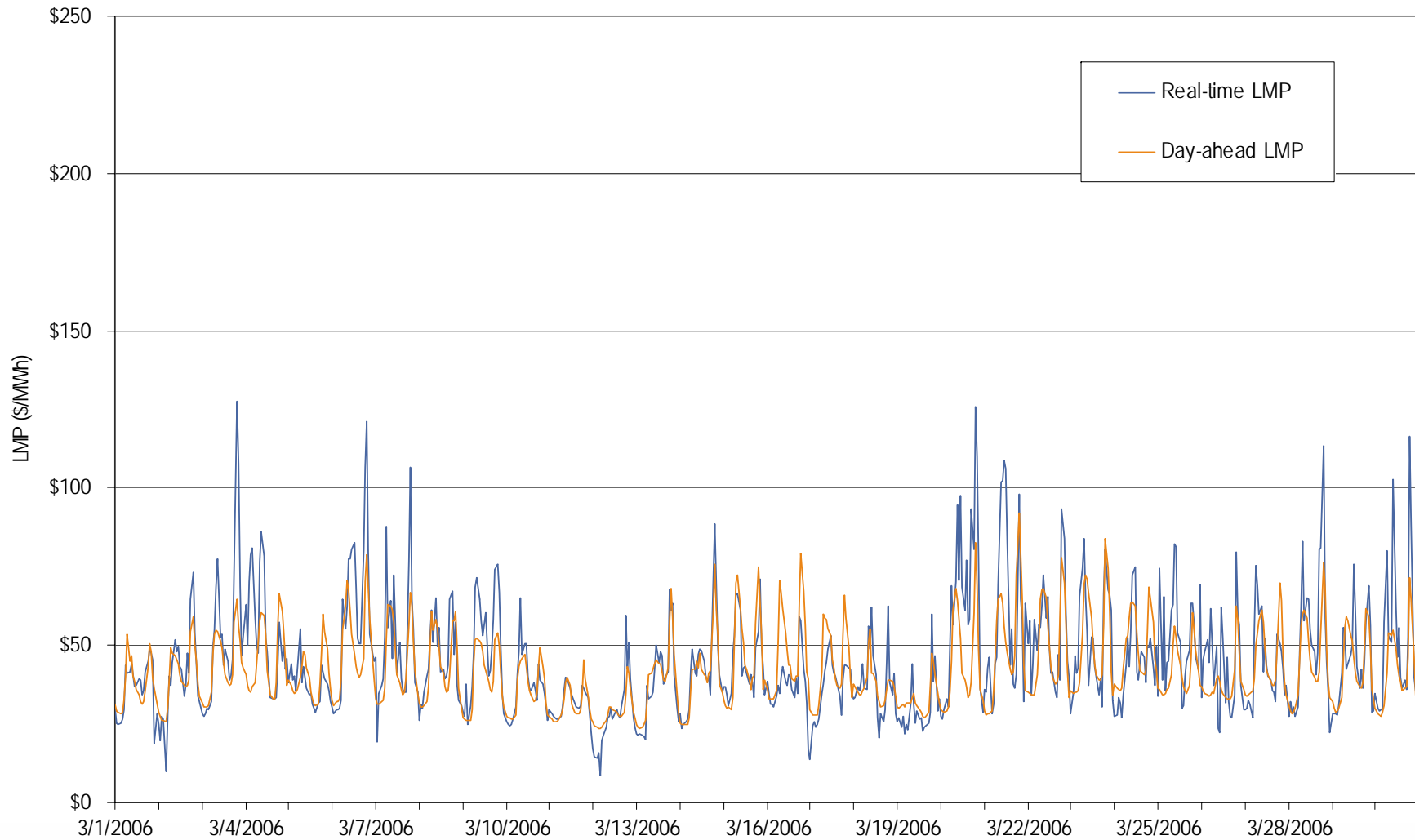
## AEP real-time and day-ahead hourly average off-peak LMP March 2006



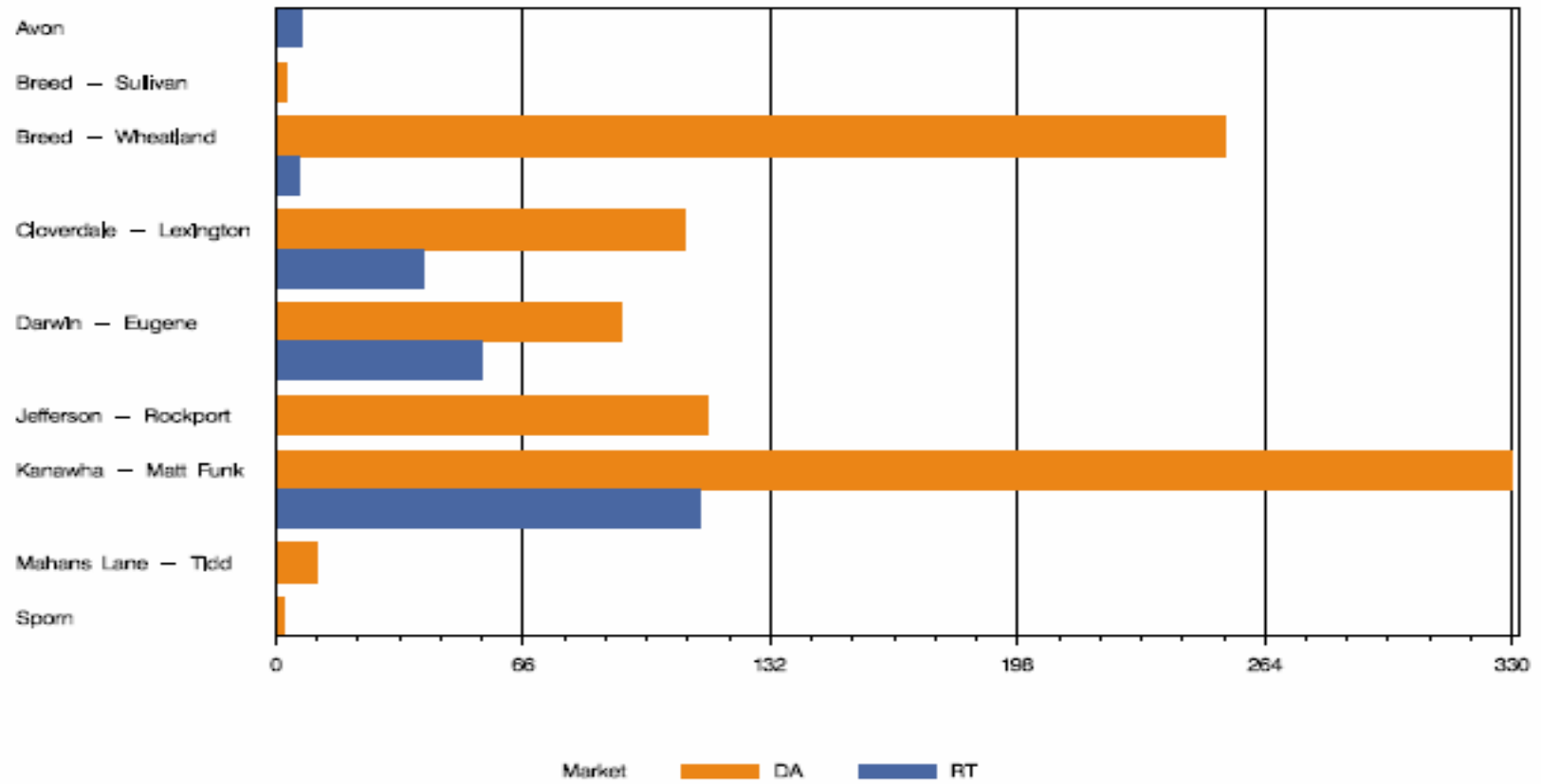
## AEP real-time and day-ahead hourly average on-peak LMP March 2006



## AEP real-time and day-ahead hourly zonal LMP March 2006



## AEP Congestion Event Hours by Facility March 2006



## Offer Capping for March 2006:

- There were 220 event hours of Real-Time congestion in AEP in March.
  - There were 80 offer capped unit hours in Real-Time.
- There were 918 event hours of Day-Ahead congestion in AEP in March.
  - There was no offer capping in Day-Ahead.