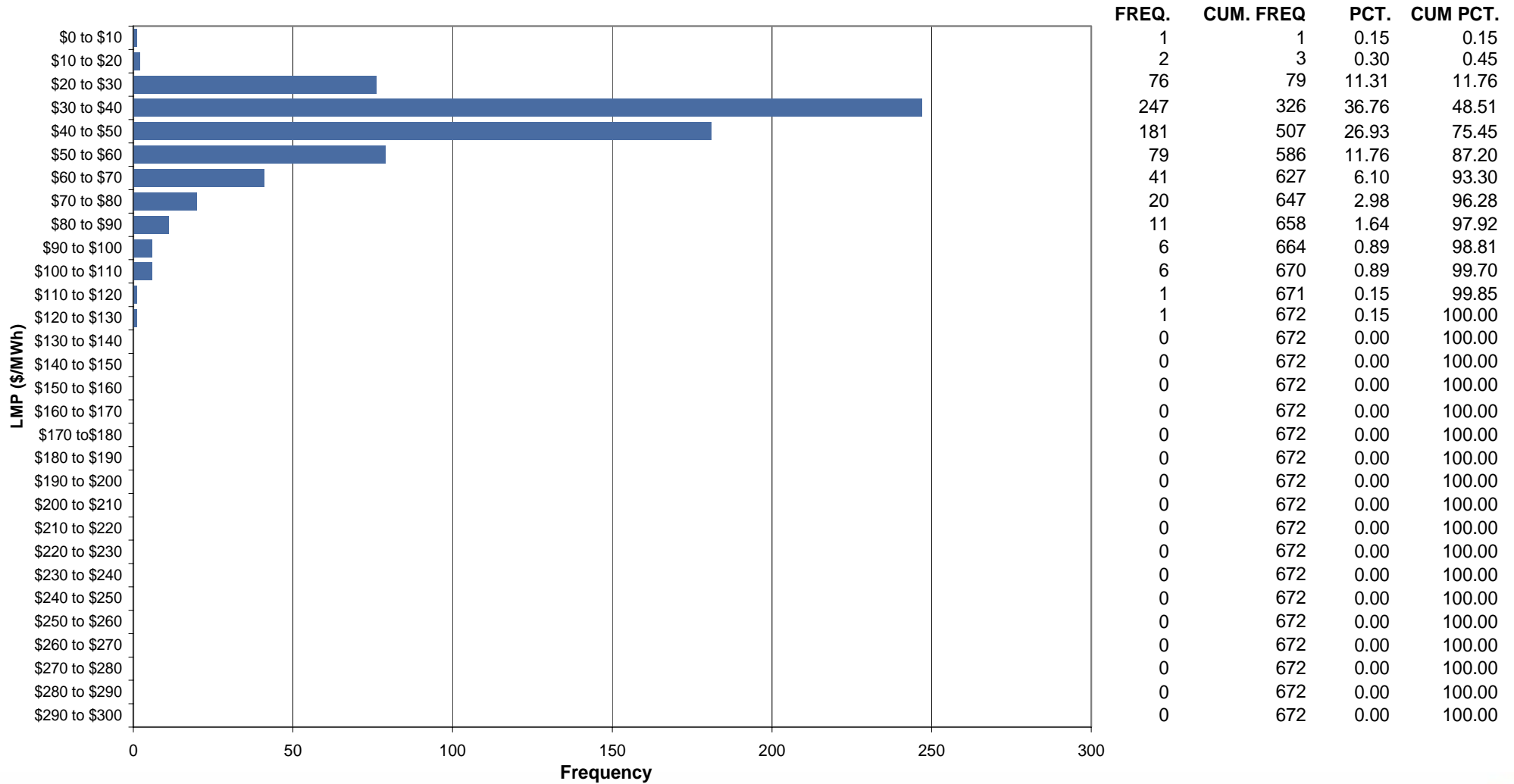




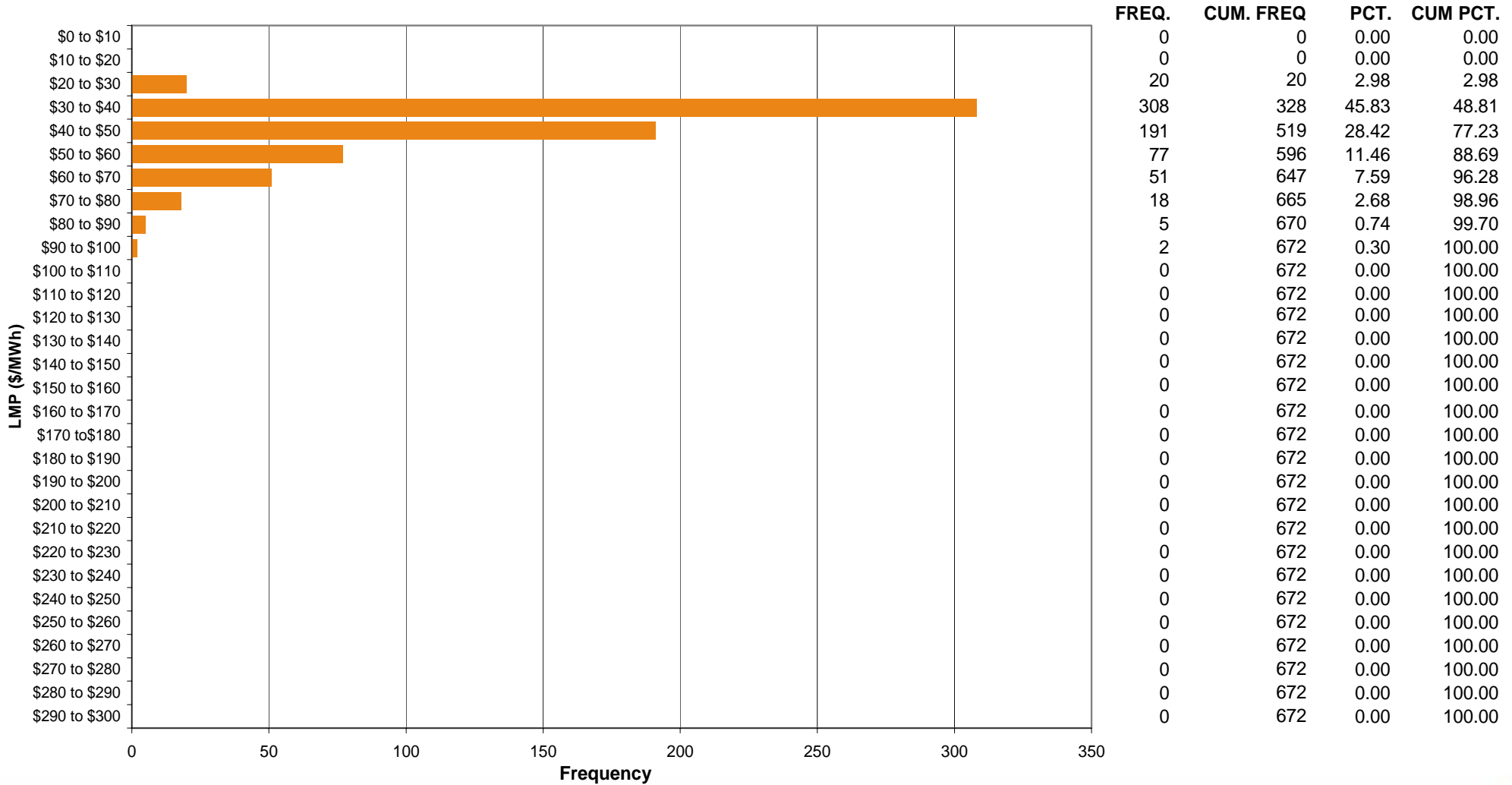
AEP Control Zone Market Monitoring Report for February 2006

Market Monitoring Unit
March 2006

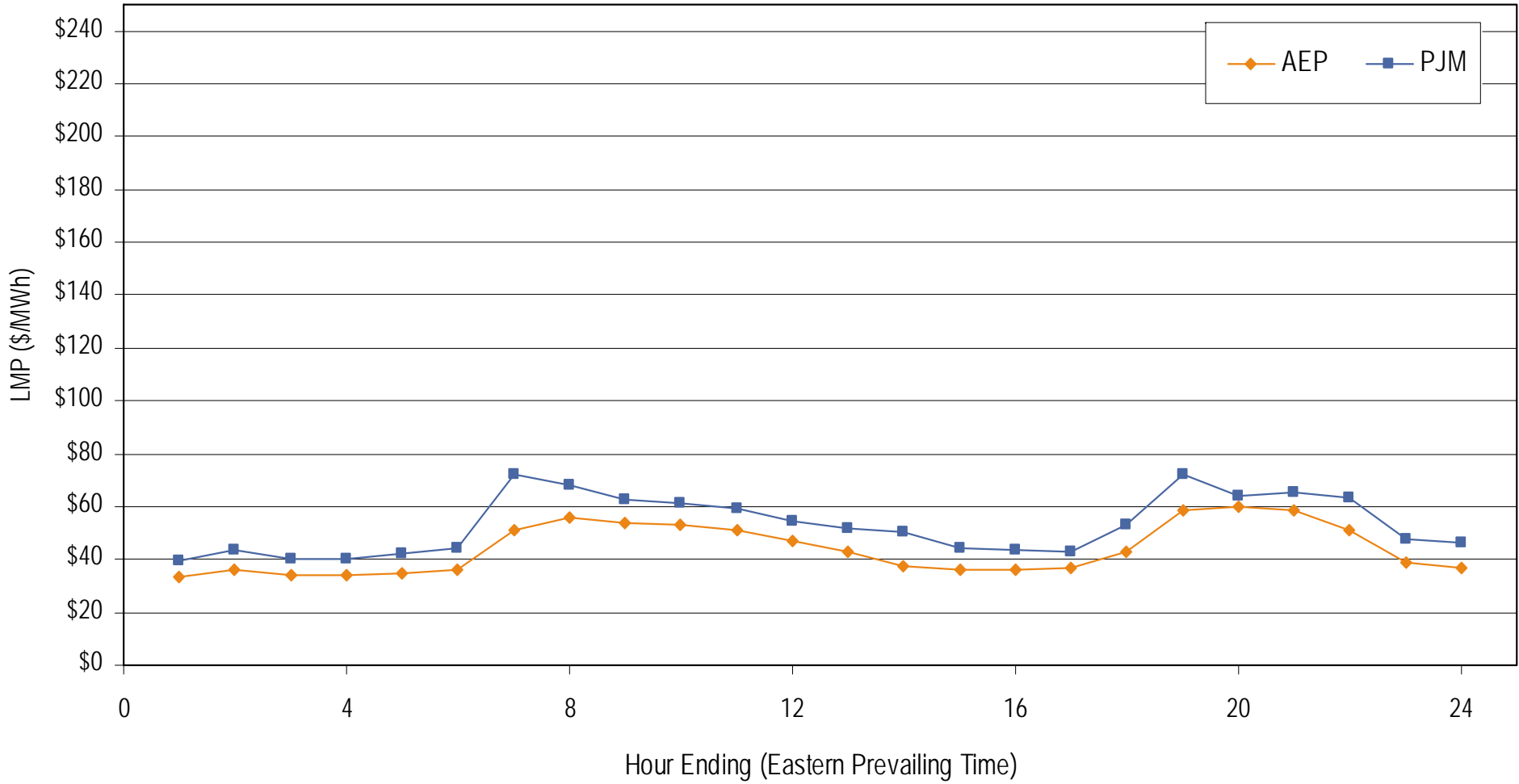
Frequency Distribution by Hours of AEP Real-time LMP February 2006



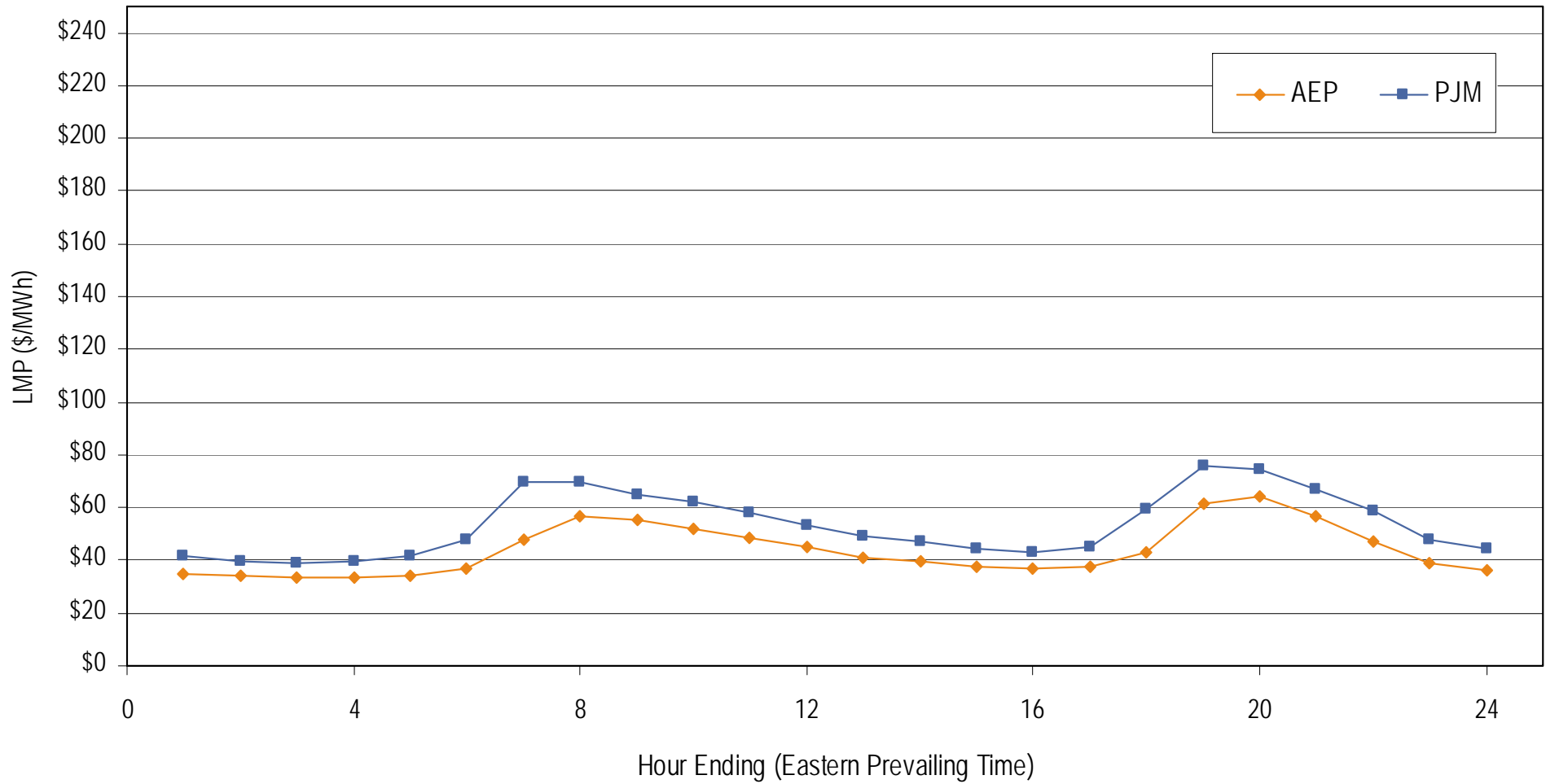
Frequency Distribution by Hours of AEP Day-ahead LMP February 2006



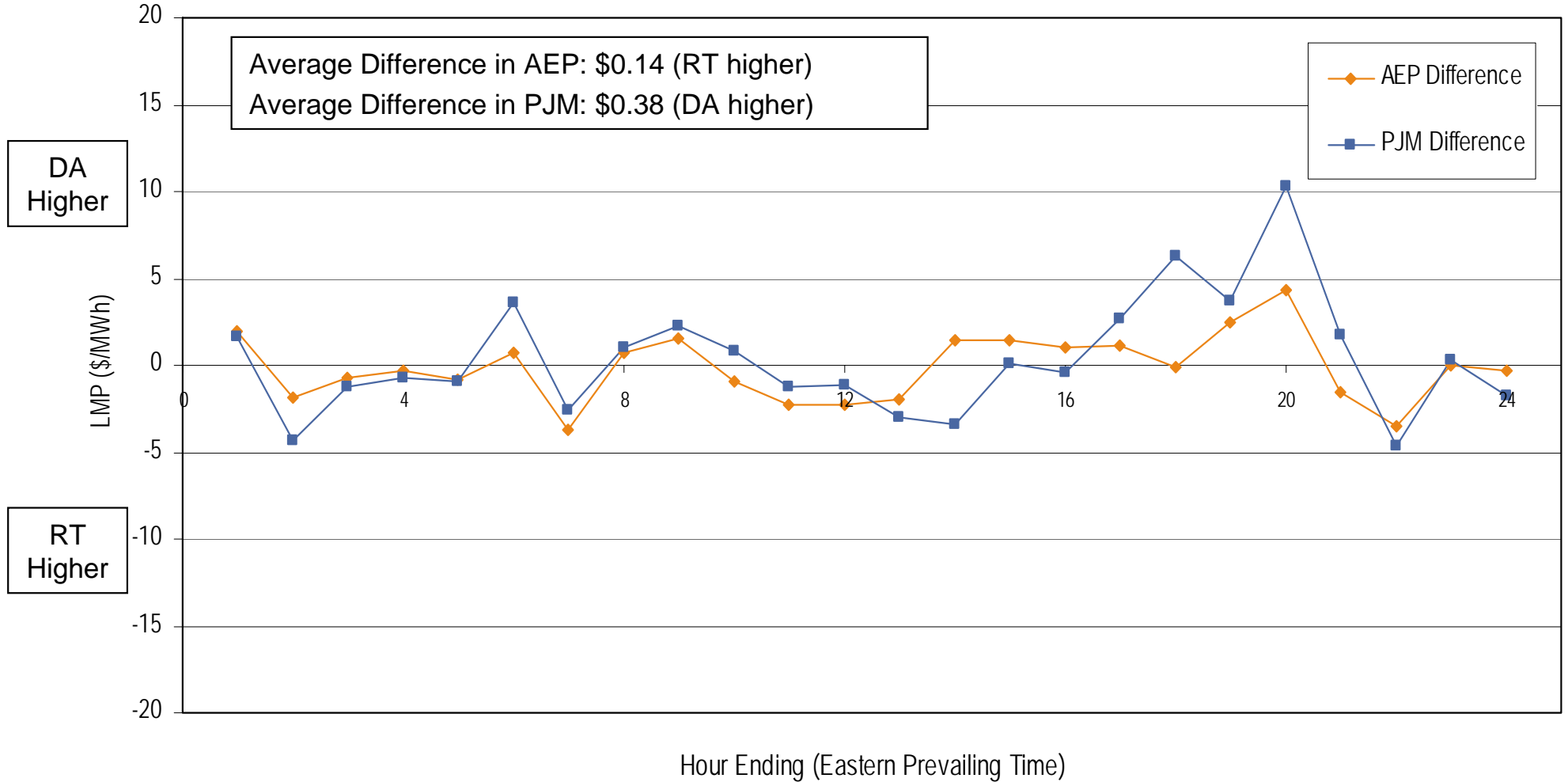
**Average Hourly Real-Time LMP
February 2006**



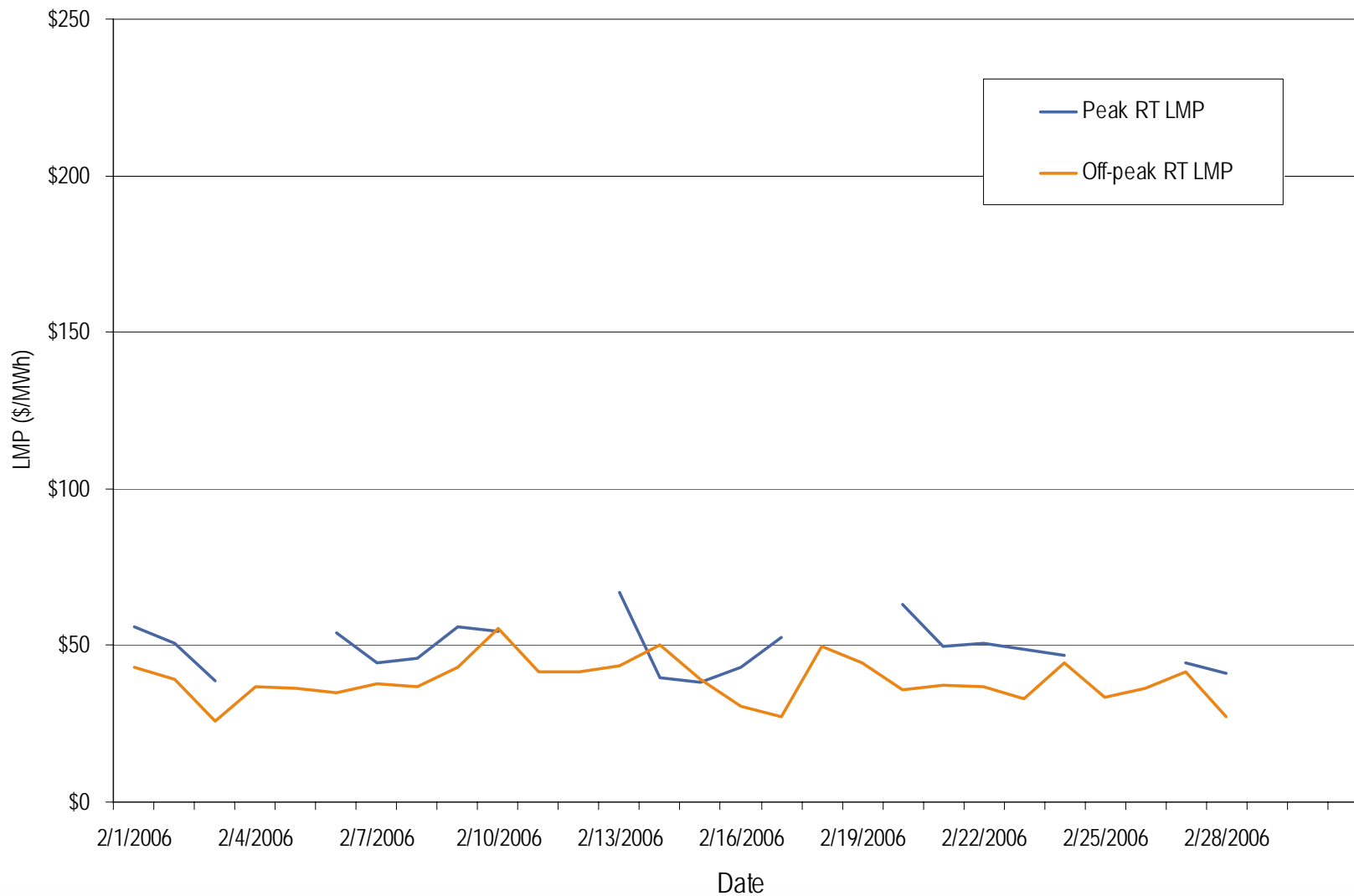
**Average Hourly Day-Ahead LMP
February 2006**



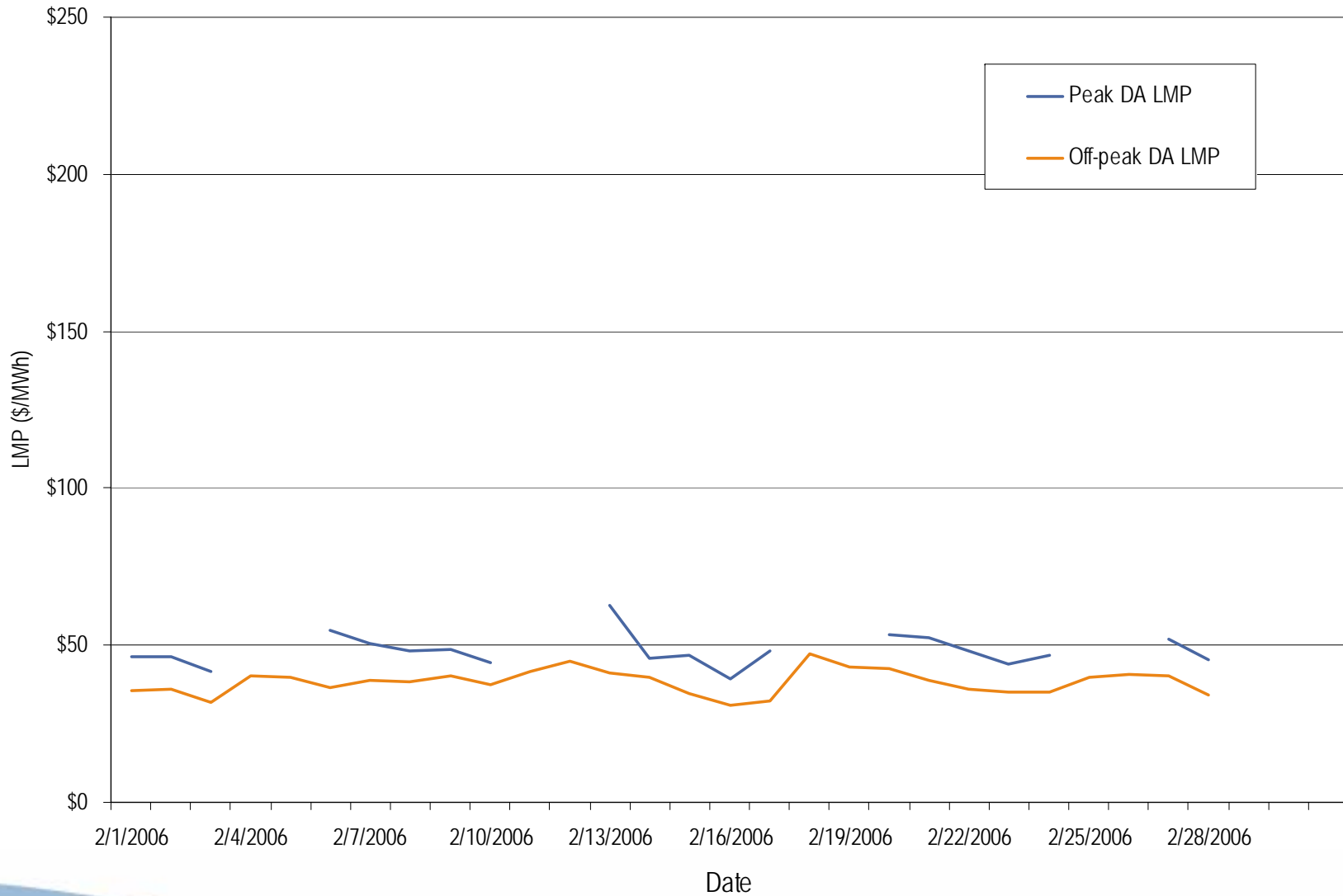
**Average Hourly Difference of Day-Ahead and Real-Time LMPs
February 2006**



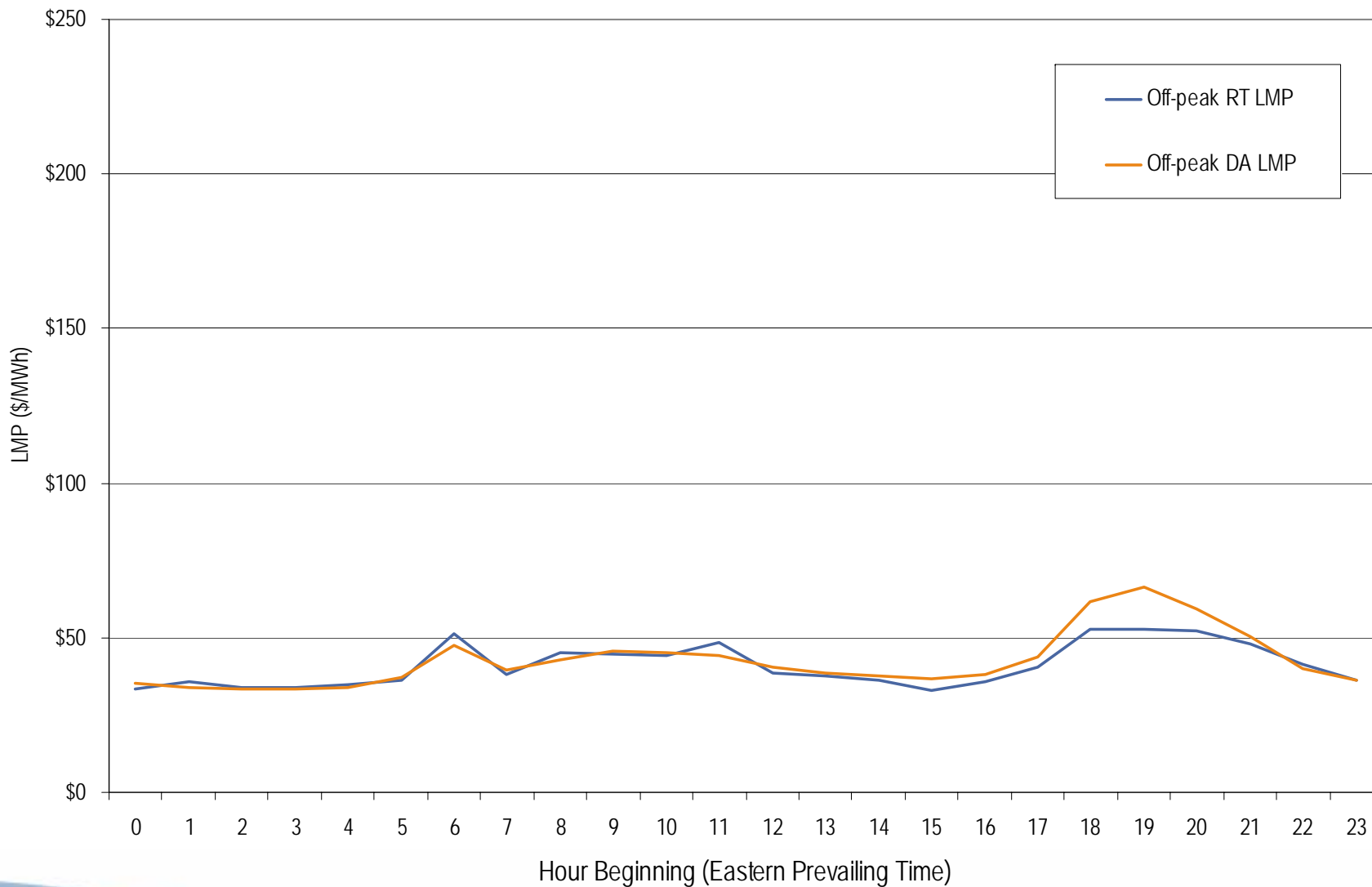
AEP real-time peak and off-peak average daily LMP February 2006



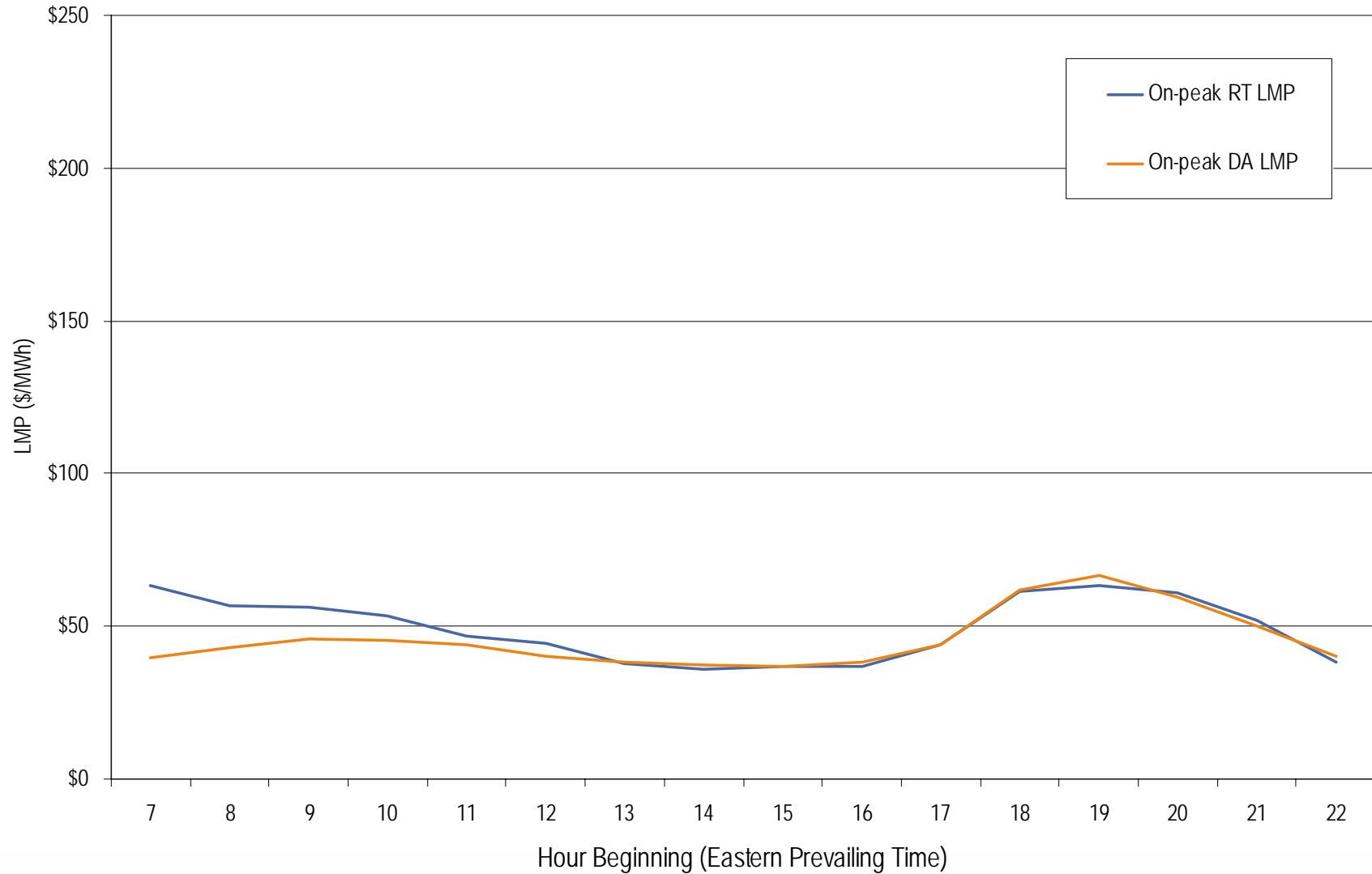
AEP day-ahead peak and off-peak average daily LMP February 2006



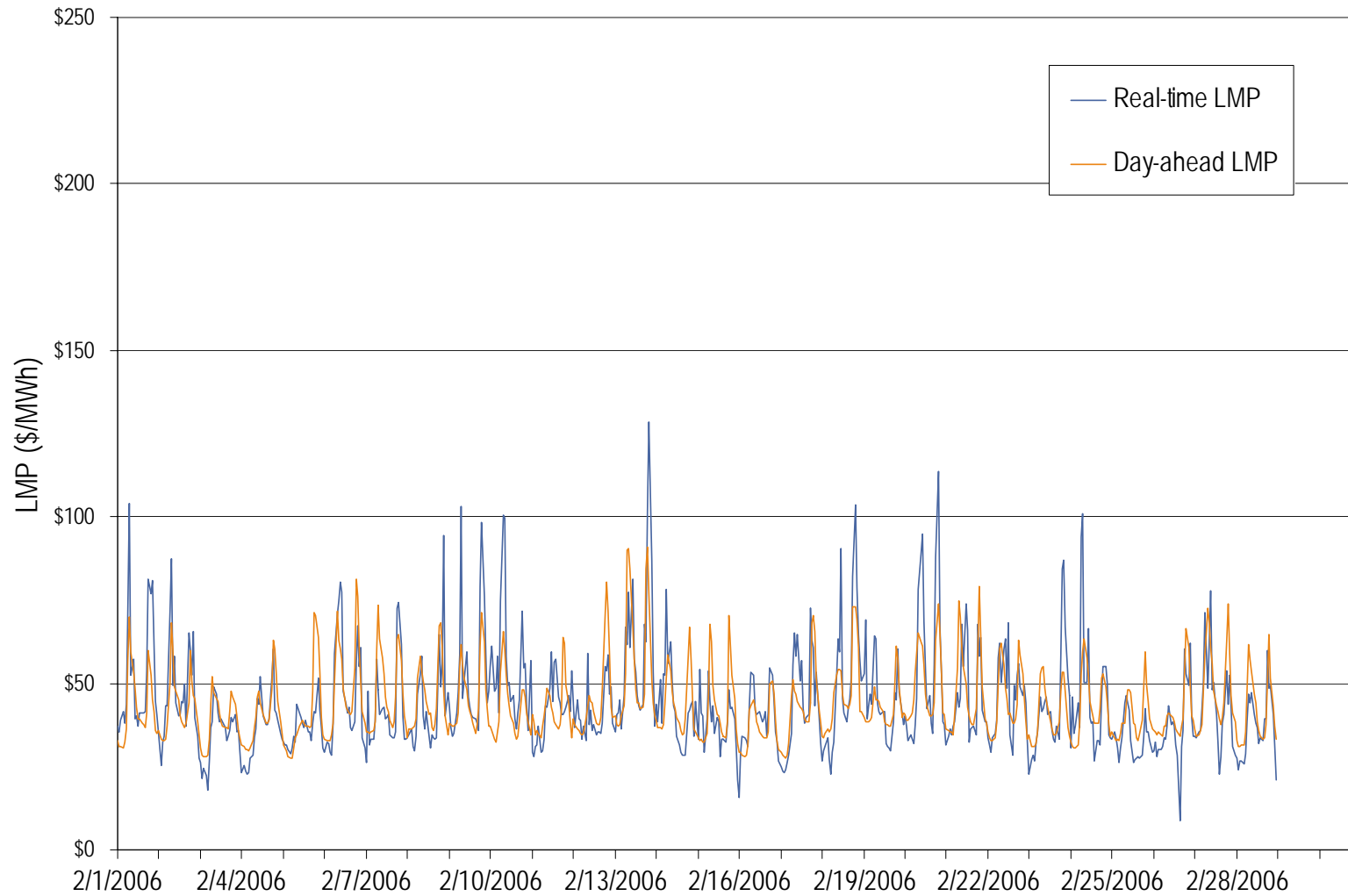
AEP real-time and day-ahead hourly average off-peak LMP February 2006



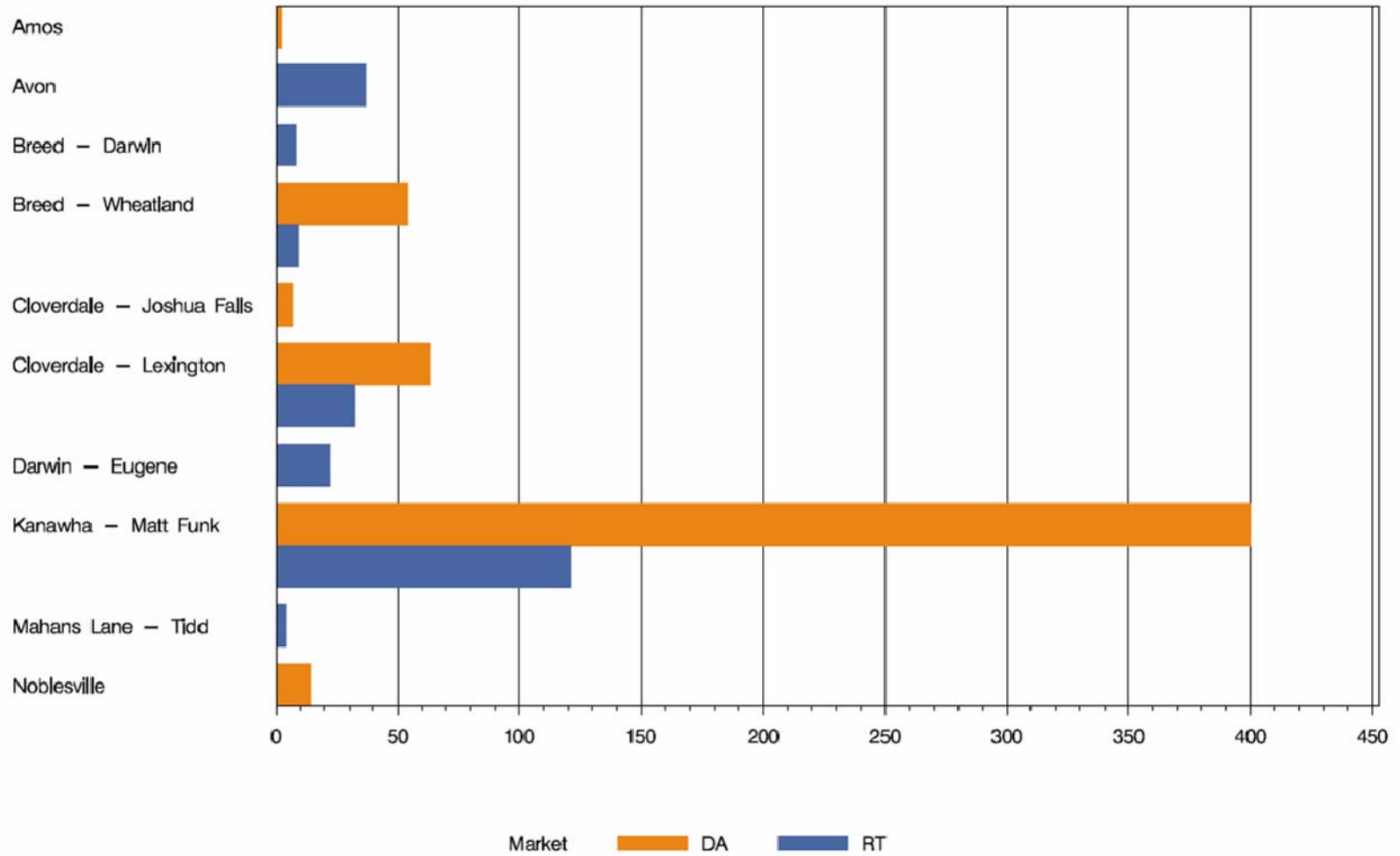
AEP real-time and day-ahead hourly average on-peak LMP February 2006



AEP real-time and day-ahead hourly zonal LMP February 2006



AEP Congestion Event Hours by Facility February 2006



Offer Capping for February 2006:

- There were 233 event hours of Real-Time congestion in AEP in February.
 - There were 262 offer capped unit hours associated with this congestion.
- There were 540 event hours of Day-Ahead congestion in AEP in February.
 - There was no offer capping associated with this congestion.