

# **November 11, 2025 Synchronized Reserve Performance Inquiry Results**

Operating Committee  
January 8, 2026

Joel Romero Luna  
Earl Hyatt



Monitoring Analytics

# Reserve Performance Inquiry on Shortfall

- The IMM contacted resources regarding their underperformance during the November 11, 2025 synchronized reserve event.
- The November 11, 2025 event had a 83% response (2,254 MW responded of 2,720 MW deployed, 466 MW did not perform).
- Performance including over response was 104% (2,829 MW).
- Results:
  - 60 resources of interest contacted (82% of total shortfall).
  - So far, 36 resources categorized by primary cause of shortfall, representing approximately 299 MW (64% of the total 466 MW of shortfall initially of interest).

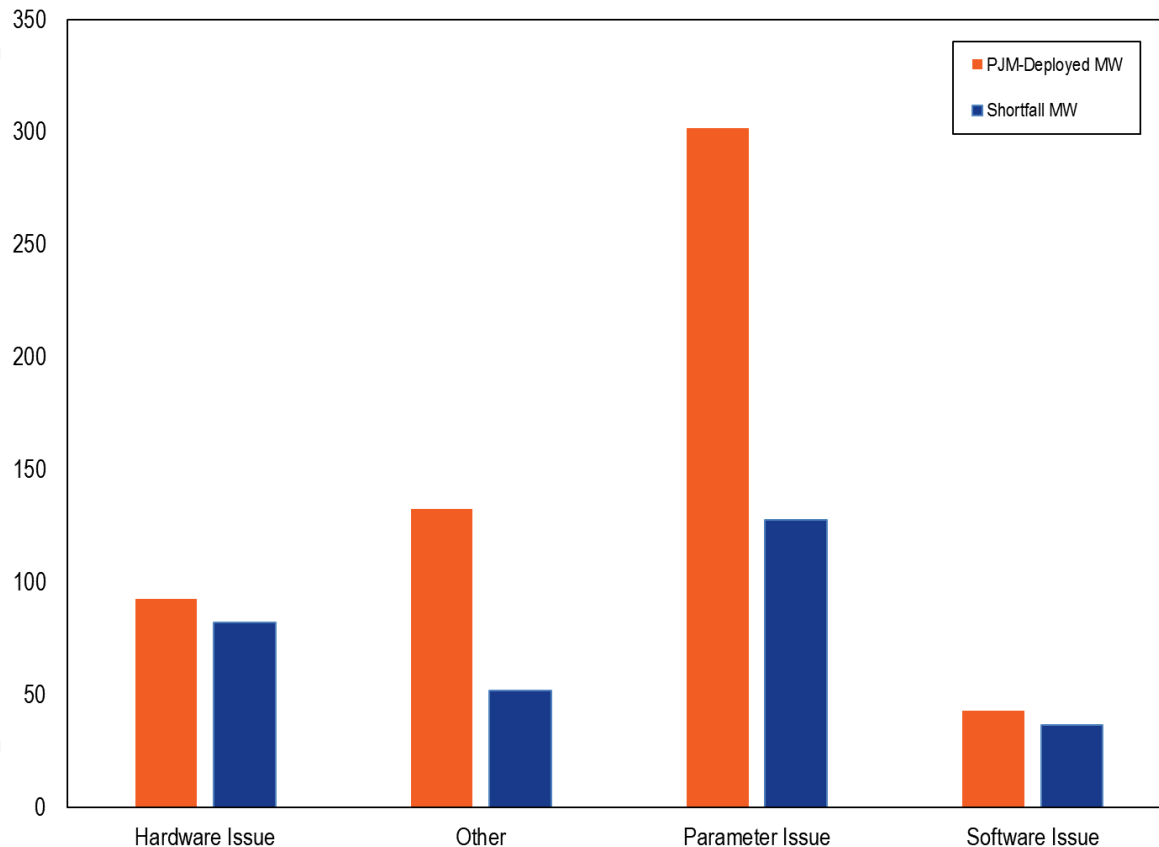
Note: Values can change as communications continue. Numbers might differ from PJM presentations.

# Category Definitions

Issue Category	Definition
Communication	Delayed action, mistimed action, failure to act, delayed communication, or failure to communicate by MOC operator or plant personnel after contact/notification
Hardware/Software	Mechanical problems that occur during response; misconfiguration or logic errors in software that deploys the response or manages/monitors the unit; or problems with fuel that limit response
Modeling	Transition time to put equipment into or out of service or time needed to change direction of unit
Parameter	Ramp rates, economic maximums, offer amounts, and other parameters overstated resource ability
Personnel	Incorrect action or lack of action taken by MOC operator or plant personnel after contact/notification. Contact/notification was made, but operator did not know what to do when spin event was called



# MW Shortfall by Primary Cause



# Historical Categorization Results

Day	Communication	Hardware/Software	Modeling	Parameter	Personnel	Total
08-Jul-2024	860.6	85.9	78.1	355.9	271.9	1,652.4
18-Aug-2024	56.3	271.5	49.7	183.2	36.2	596.8
10-Nov-2024	28.2	1.6	107.2	207.1	79.4	423.5
05-Feb-2025	0.0	113.6	54.9	83.1	240.5	492.1
01-Jul-2025	0.0	17.2	211.6	82.0	8.0	318.7
22-Jul-2025	35.5	142.1	178.8	136.8	29.8	523.0
25-Sep-2025	0.1	135.8	34.8	102.2	139.2	412.0
17-Oct-2025	13.1	26.8	59.9	105.3	69.4	274.5
28-Oct-2025	2.3	301.1	12.7	265.0	1.9	583.0



# Historical Results

- **Observations:**
  - **Communication issues have become less concerning.**
  - **Personnel issues continue to be persistent. Generation owners / MOC should maintain focus on operator training.**
  - **Parameter issues should be dealt with existing tools (e.g. spin max exceptions, updating ramp rates, ensuring eco max are updated)**



# Event Response Including Full Response from Assigned Resources

Day	Assigned MW	Capped Response MW	Reported Performance	Full Response MW	Full Performance
08-Jul-2024	3,234	1,479	46%	1,621	50%
21-Jul-2024	2,379	1,766	74%	2,079	87%
18-Aug-2024	1,945	1,342	69%	1,672	86%
10-Nov-2024	1,919	1,483	77%	2,330	121%
05-Feb-2025	1,924	1,252	65%	1,623	84%
01-Jul-2025	2,942	2,337	79%	2,933	100%
22-Jul-2025	3,312	2,610	79%	3,304	100%
25-Sep-2025	3,343	2,566	77%	3,297	99%
17-Oct-2025	2,387	1,893	79%	2,397	100%
28-Oct-2025	2,282	1,389	61%	1,847	81%
11-Nov-2025	2,720	2,254	83%	2,829	104%

# IMM Recommendation

- **PJM's calculation metric for synchronized reserve performance artificially understates performance.**
- **The IMM recommends that PJM calculate the synchronized reserve performance metrics including the performance of all units assigned reserves.**
- **The IMM recommends that PJM calculate the synchronized reserve performance metrics without capping the performance of over performing units at the assigned reserve amount.**



**Monitoring Analytics, LLC**

**2621 Van Buren Avenue**

**Suite 160**

**Eagleview, PA**

**19403**

**(610) 271-8050**

**[MA@monitoringanalytics.com](mailto:MA@monitoringanalytics.com)**

**[www.MonitoringAnalytics.com](http://www.MonitoringAnalytics.com)**

