

MMU Issues

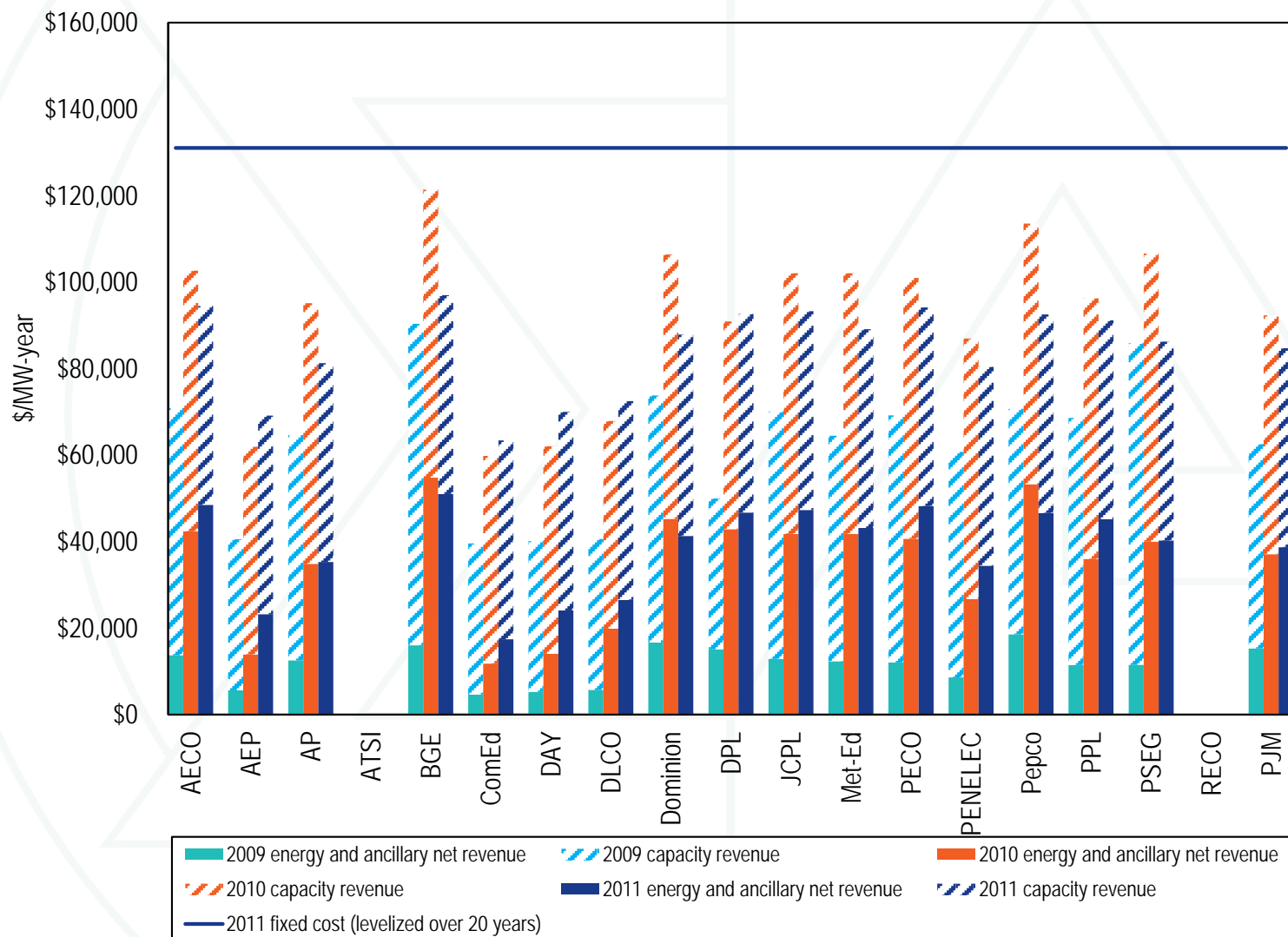
Members Committee
February 21, 2012

Joe Bowring

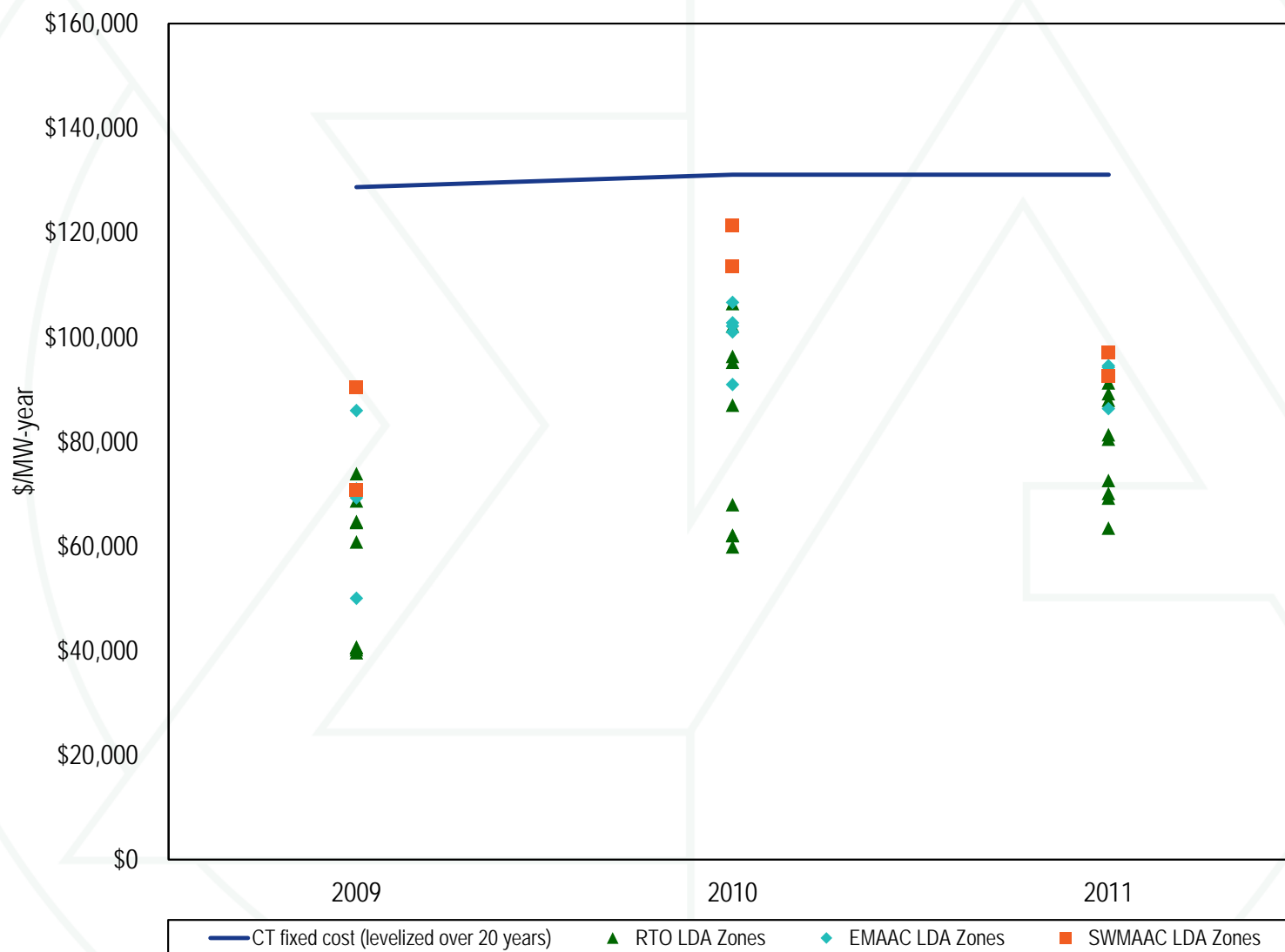


Monitoring Analytics

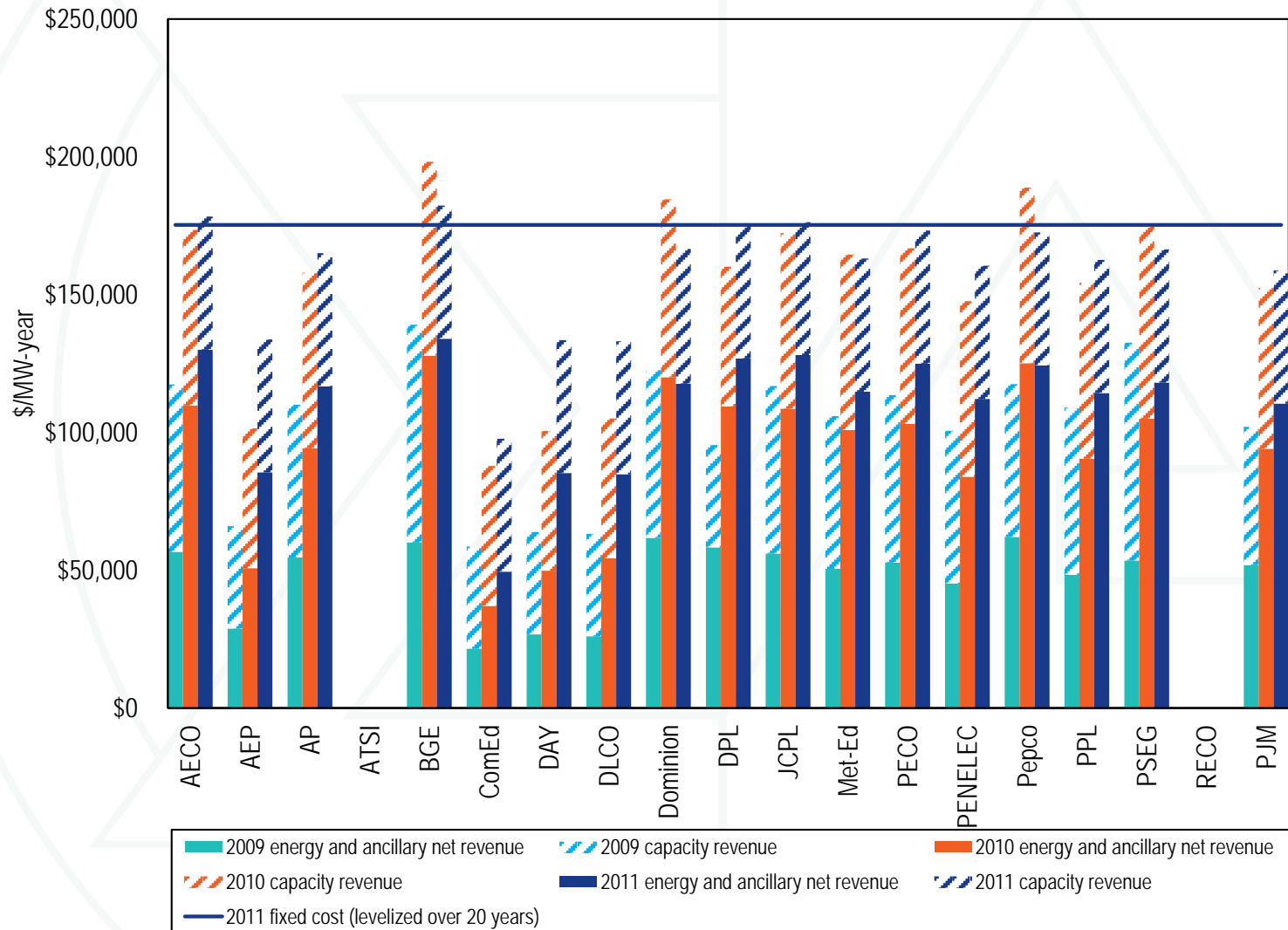
New entrant CT net revenue and 20-year levelized fixed cost (Dollars per installed MW-year)



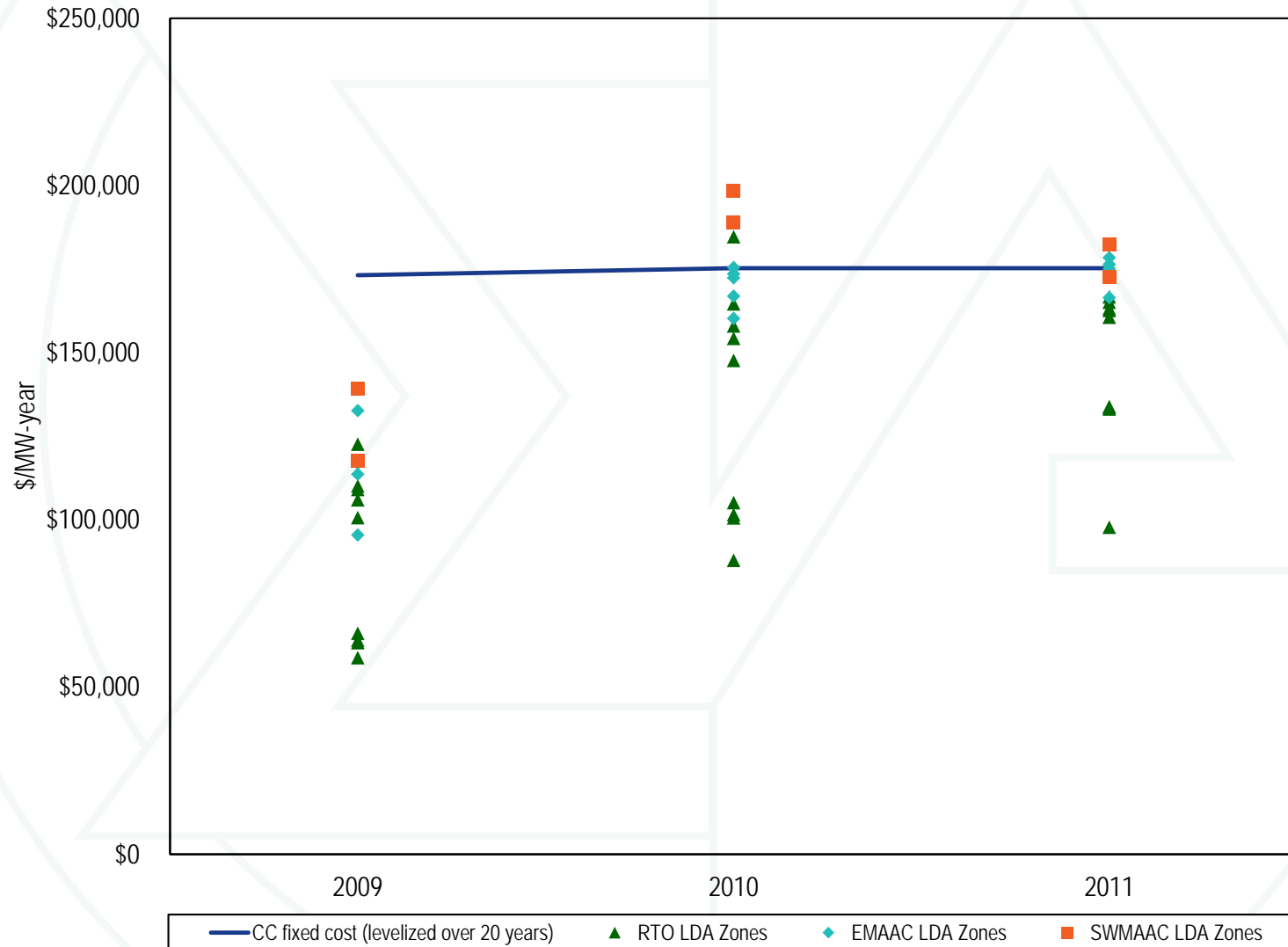
New entrant CT net revenue and 20-year levelized fixed cost by LDA (Dollars per installed MW-year)



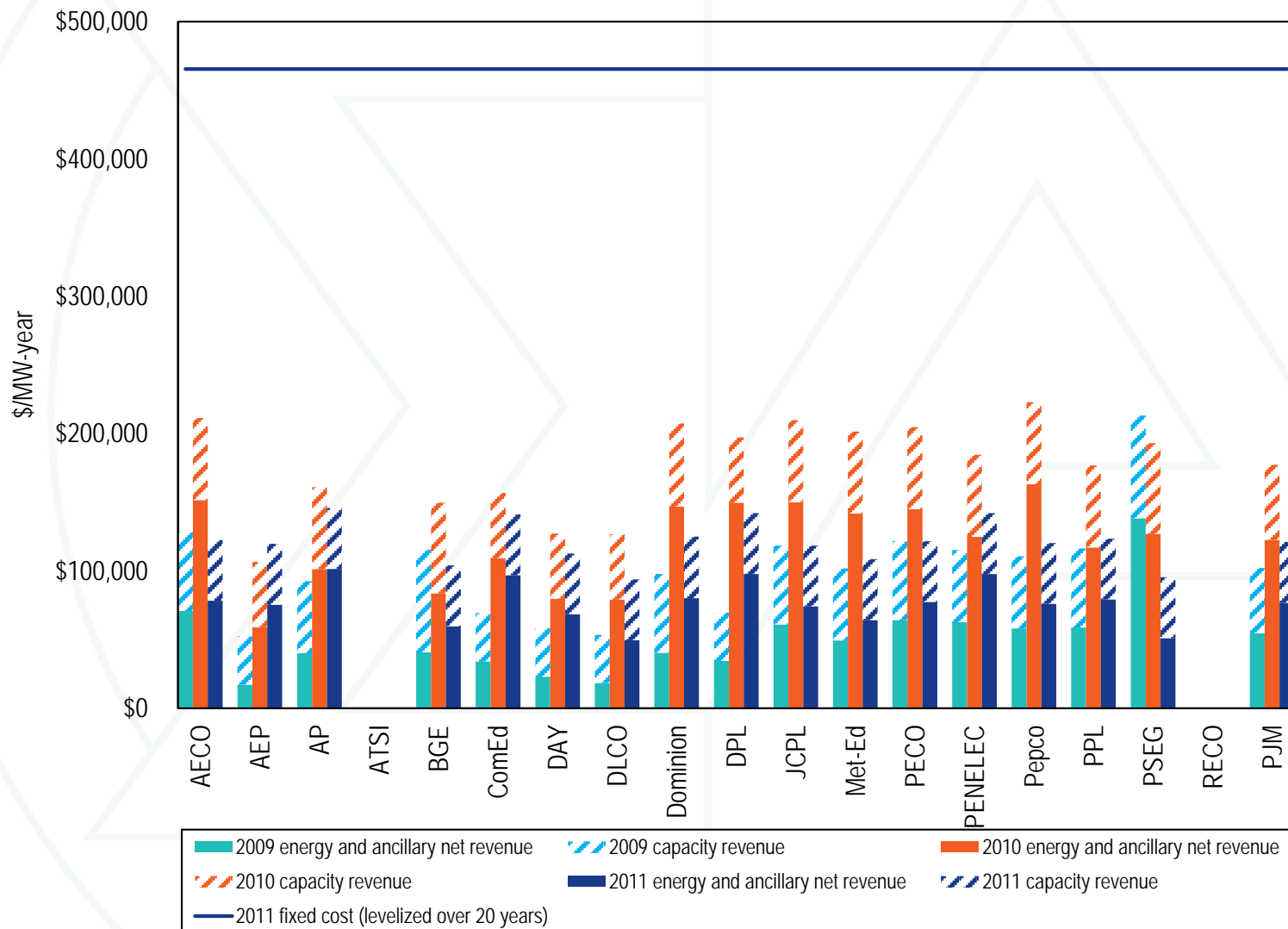
New entrant CC net revenue and 20-year levelized fixed cost (Dollars per installed MW-year)



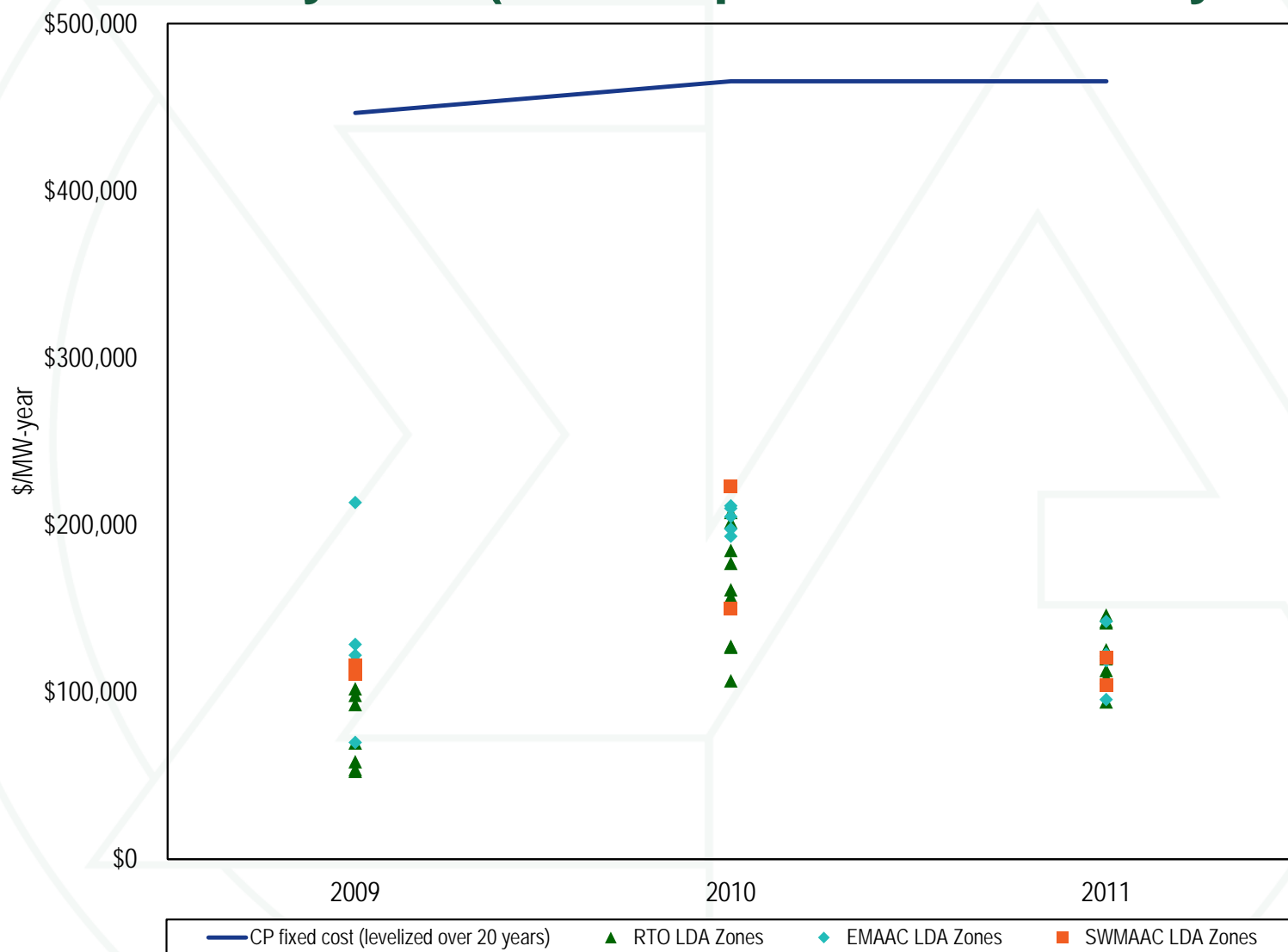
New entrant CC net revenue and 20-year levelized fixed cost by LDA (Dollars per installed MW-year)



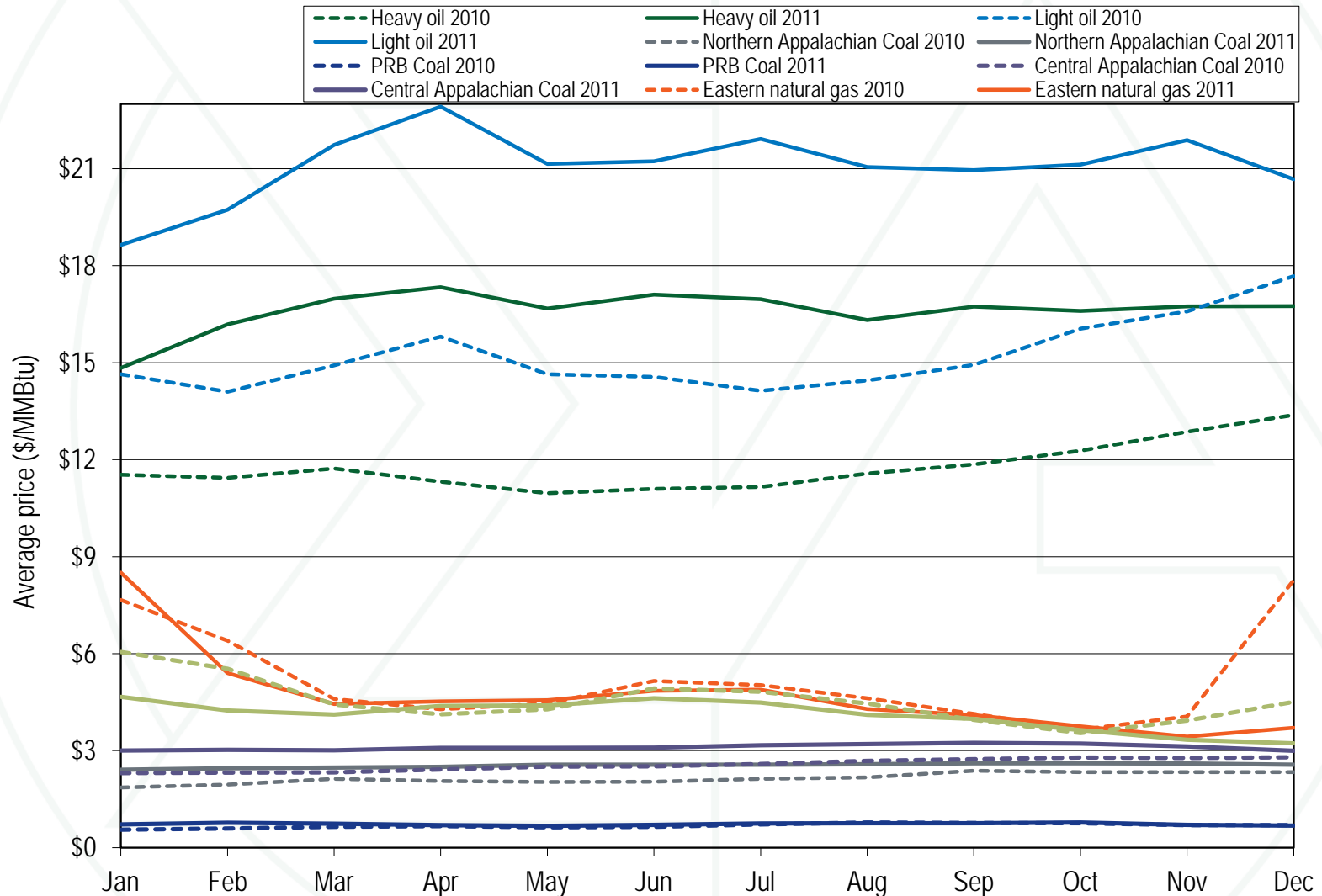
New entrant CP net revenue and 20-year levelized fixed cost (Dollars per installed MW-year)



New entrant CP net revenue and 20-year levelized fixed cost by LDA (Dollars per installed MW-year)



Spot average fuel price comparison: Calendar years 2010 through 2011



Avoidable cost recovery by quartile from all PJM Markets for select technologies for calendar year 2011

Technology	Recovery of avoidable costs from all markets		
	First quartile	Second quartile	Third quartile
CC - NUG Cogeneration Frame B or E Technology	220%	296%	635%
CC - Two of Three on One Frame F Technology	455%	722%	1,088%
CT - First & Second Generation Aero (P&W FT 4)	282%	522%	676%
CT - First & Second Generation Frame B	384%	546%	677%
CT - Second Generation Frame E	677%	718%	1,075%
CT - Third Generation Aero	387%	573%	632%
CT - Third Generation Frame F	609%	789%	959%
Diesel	487%	742%	2,495%
Hydro	849%	1,061%	1,163%
Nuclear	NA	NA	NA
Oil or Gas Steam	87%	177%	209%
Pumped Storage	186%	443%	664%
Sub-Critical Coal	91%	158%	212%
Super Critical Coal	60%	209%	314%

Installed capacity associated with various levels of avoidable cost recovery: Calendar year 2011

Groups of coal plants by percent recovery of avoidable cost	Installed capacity (MW)	Percent of total
0% - 65%	4,040	13%
65% - 75%	204	1%
75% - 90%	544	2%
90% - 100%	1,615	5%
> 100%	25,507	80%
Total	31,909	100%

PJM day-ahead average load: Calendar years 2000 through 2011

Year	PJM Day-Ahead Load (MWh)						Year-to-Year Change					
	Average Load	Average Up-to Congestion	Average Load and Up-to Congestion	Load Standard Deviation	Up-to Congestion Standard Deviation	Load and Up-to Congestion Standard Deviation	Average Load	Average Up-to Congestion	Average Load and Up-to Congestion	Load Standard Deviation	Up-to Congestion Standard Deviation	Load and Up-to Congestion Standard Deviation
2000	33,045	0	33,045	6,850	0	6,850	NA	NA	NA	NA	NA	NA
2001	33,318	76	33,392	6,489	205	6,530	0.8%	NA	1.1%	(5.3%)	NA	(4.7%)
2002	42,131	196	41,471	10,130	347	12,049	26.5%	159.3%	24.2%	56.1%	69.4%	84.5%
2003	44,340	406	44,735	7,883	353	7,850	5.2%	107.5%	7.9%	(22.2%)	1.8%	(34.9%)
2004	61,034	910	61,944	16,318	837	16,603	37.6%	124.1%	38.5%	107.0%	137.0%	111.5%
2005	92,002	1,359	93,369	17,381	796	17,566	50.7%	49.3%	50.7%	6.5%	(4.8%)	5.8%
2006	94,793	3,681	98,478	16,048	105	16,690	3.0%	170.8%	5.5%	(7.7%)	(86.8%)	(5.0%)
2007	100,912	4,498	105,418	16,190	105	16,656	6.5%	22.2%	7.0%	0.9%	(0.0%)	(0.2%)
2008	95,522	6,288	101,287	15,439	106	16,575	(5.3%)	39.8%	(3.9%)	(4.6%)	0.3%	(0.5%)
2009	88,707	6,217	94,002	14,896	2,157	16,477	(7.1%)	(1.1%)	(7.2%)	(3.5%)	1,941.9%	(0.6%)
2010	90,985	12,952	103,935	17,014	7,778	21,361	2.6%	108.3%	10.6%	14.2%	260.5%	29.6%
2011	91,713	22,153	113,866	17,830	5,767	20,708	0.8%	71.0%	9.6%	4.8%	(25.9%)	(3.1%)

PJM day-ahead average generation: Calendar years 2000 through 2011

Year	PJM Day-Ahead Generation (MWh)						Year-to-Year Change					
	Average Generation (Cleared Generation and INC Offers)	Average Up-to Congestion	Average Total Generation (Cleared Generation, INC Offers and Up-to Congestion)	Standard Deviation Generation (Cleared Generation and INC Offers)	Standard Deviation Up-to Congestion	Standard Deviation Total Generation (Cleared Generation, INC Offers and Up-to Congestion)	Average Generation (Cleared Generation and INC Offers)	Average Up-to Congestion	Average Total Generation (Cleared Generation, INC Offers and Up-to Congestion)	Standard Deviation Generation (Cleared Generation and INC Offers)	Standard Deviation Up-to Congestion	Standard Deviation Total Generation (Cleared Generation, INC Offers and Up-to Congestion)
2000	32,942	0	32,942	15,307	0	6,706	NA	NA	NA	NA	NA	NA
2001	32,966	76	33,042	6,308	205	6,340	0.1%	NA	0.3%	(58.8%)	NA	(5.5%)
2002	40,849	196	41,045	11,982	347	12,035	23.9%	159.3%	24.2%	89.9%	69.4%	89.8%
2003	43,922	406	44,328	7,822	353	7,779	7.5%	107.5%	8.0%	(34.7%)	1.8%	(35.4%)
2004	61,493	910	62,404	17,194	837	17,460	40.0%	124.1%	40.8%	119.8%	137.0%	124.5%
2005	92,911	1,359	94,270	17,440	796	17,621	51.1%	49.3%	51.1%	1.4%	(4.8%)	0.9%
2006	95,743	3,681	99,424	16,515	105	17,150	3.0%	170.8%	5.5%	(5.3%)	(86.8%)	(2.7%)
2007	103,302	4,498	107,801	16,746	105	17,195	7.9%	22.2%	8.4%	1.4%	(0.0%)	0.3%
2008	98,487	6,288	104,775	15,996	106	16,404	(4.7%)	39.8%	(2.8%)	(4.5%)	0.3%	(4.6%)
2009	90,591	6,217	96,808	15,394	2,157	16,350	(8.0%)	(1.1%)	(7.6%)	(3.8%)	1,941.9%	(0.3%)
2010	94,340	12,952	107,290	17,394	7,778	21,806	4.1%	108.3%	10.8%	13.0%	260.5%	33.4%
2011	94,977	22,153	117,130	18,069	5,767	20,977	0.7%	71.0%	9.2%	3.9%	(25.9%)	(3.8%)

Hourly average volume of cleared and submitted INCs, DECs by month: Calendar years 2010 and 2011

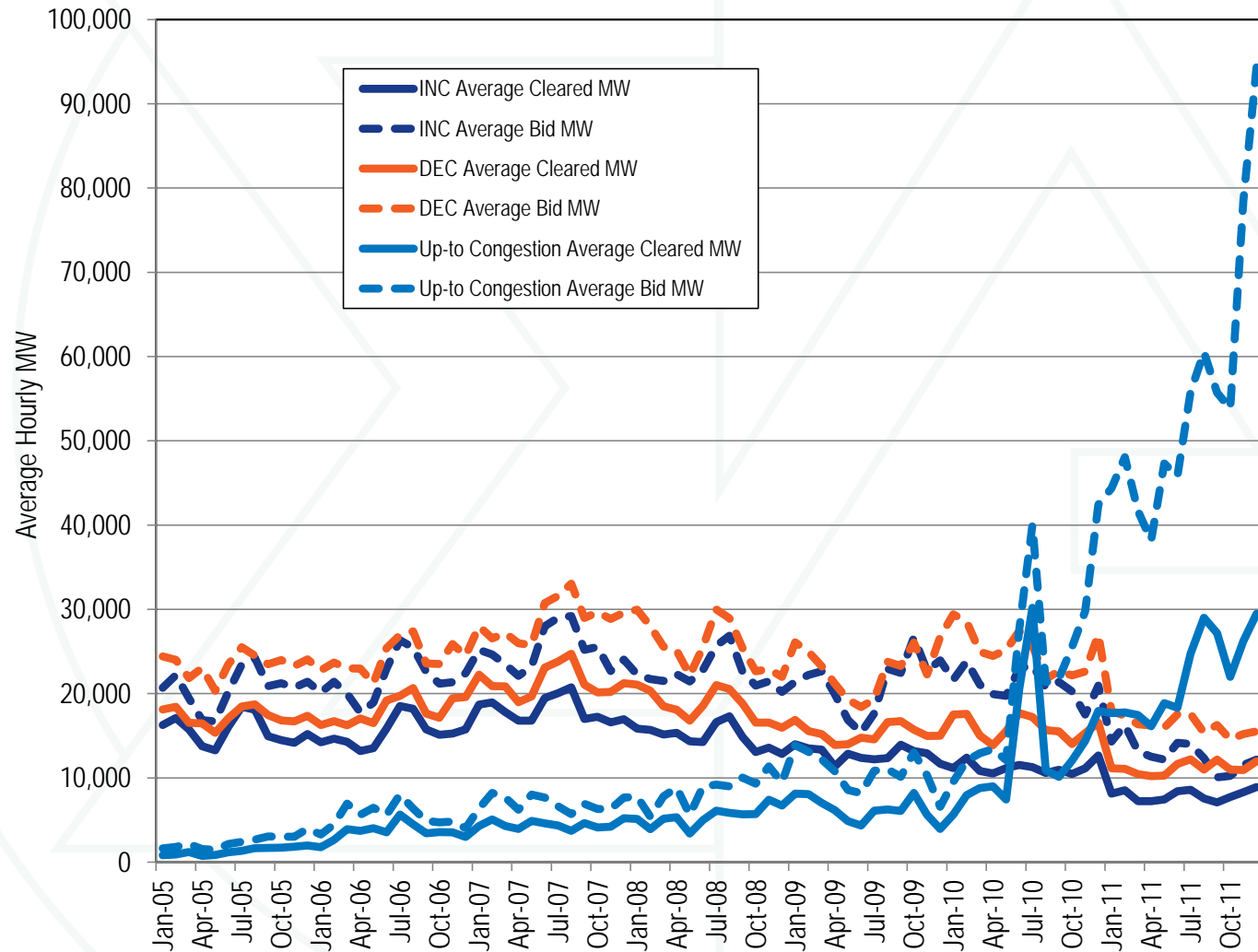
Year	Increment Offers				Decrement Bids			
	Average Cleared MW	Average Submitted MW	Average Cleared Volume	Average Submitted Volume	Average Cleared MW	Average Submitted MW	Average Cleared Volume	Average Submitted Volume
2010 Jan	11,144	21,634	282	936	17,513	29,406	266	893
2010 Feb	12,387	23,827	387	1,122	17,602	28,542	270	883
2010 Mar	10,811	21,062	308	915	15,019	24,968	253	763
2010 Apr	10,512	19,940	289	784	13,875	24,458	246	705
2010 May	11,165	19,744	218	806	15,556	25,194	223	787
2010 Jun	11,534	22,956	254	1,496	17,689	27,422	258	1,246
2010 Jul	11,276	23,414	250	1,585	17,223	25,690	304	1,284
2010 Aug	10,567	20,751	226	1,332	15,656	21,745	327	1,140
2010 Sep	10,944	21,365	263	1,232	15,522	22,646	311	1,072
2010 Oct	10,454	20,253	234	1,129	14,011	22,154	253	1,030
2010 Nov	11,134	17,495	220	1,035	15,315	22,618	271	1,055
2010 Dec	12,656	20,957	277	1,340	16,560	26,995	274	1,266
2010 Annual	11,208	21,101	267	1,143	15,952	25,135	271	1,011
2011 Jan	8,137	14,299	218	1,077	11,135	17,917	224	963
2011 Feb	8,530	16,263	215	1,672	11,071	17,355	230	1,034
2011 Mar	7,230	13,164	201	1,059	10,435	16,343	219	982
2011 Apr	7,222	12,516	185	984	10,211	16,199	202	846
2011 May	7,443	12,161	220	835	10,250	15,956	243	800
2011 Jun	8,405	14,171	238	1,084	11,648	17,542	279	1,015
2011 Jul	8,595	14,006	185	1,234	12,196	17,567	213	1,140
2011 Aug	7,540	12,349	120	1,034	10,992	15,368	161	847
2011 Sep	7,092	10,071	114	591	12,171	16,268	147	648
2011 Oct	7,726	10,242	104	351	10,983	14,550	116	396
2011 Nov	8,290	11,545	105	382	10,936	15,204	118	416
2011 Dec	8,914	12,159	107	409	11,964	15,515	114	404
2011 Annual	7,792	12,924	180	992	11,109	16,507	203	867



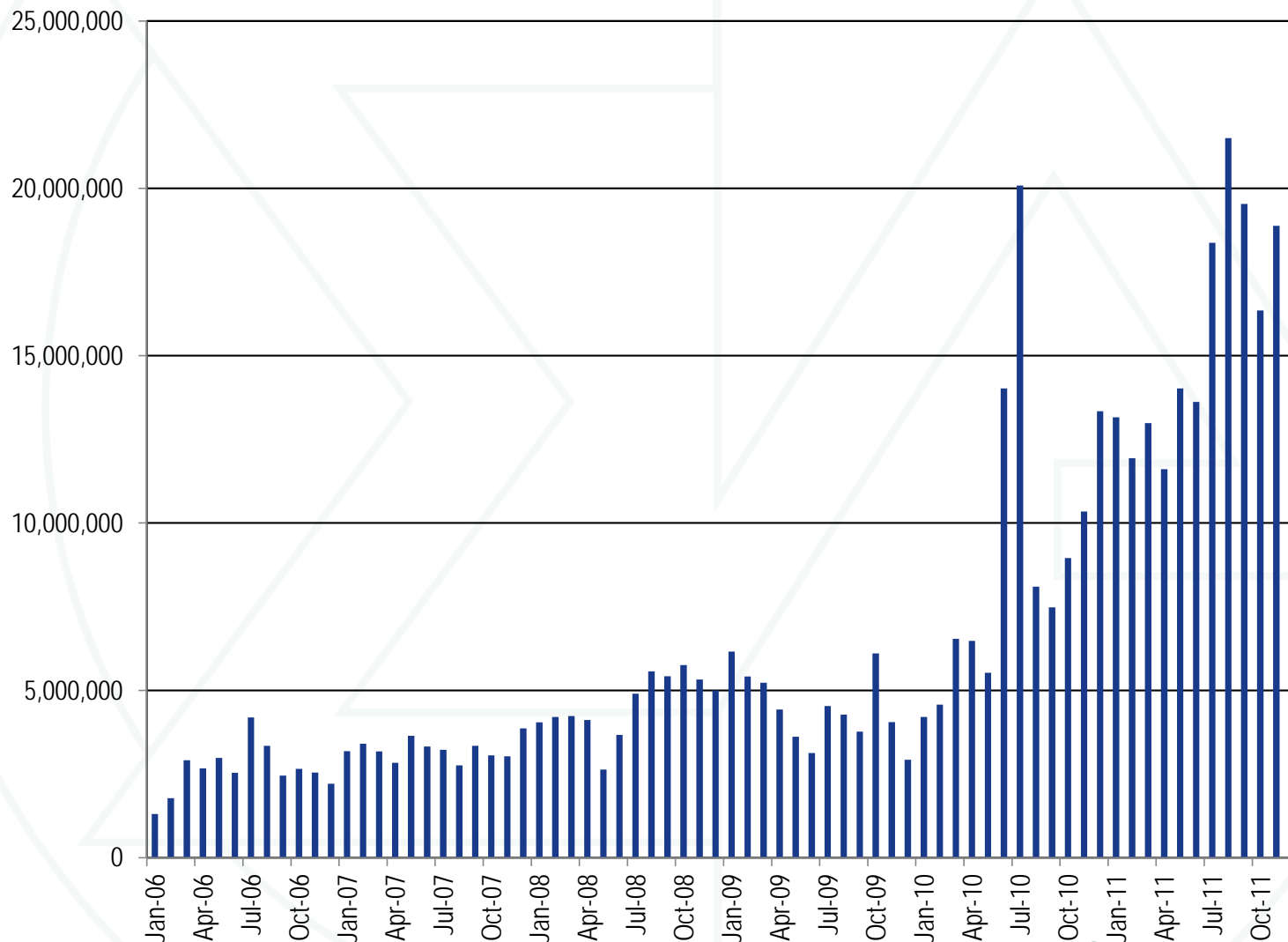
Hourly average of cleared and submitted up-to congestion bids by month: Calendar years 2010 and 2011

Year	Up-to Congestion			
	Average Cleared MW	Average Submitted MW	Average Cleared Volume	Average Submitted Volume
2010 Jan	5,647	9,549	114	189
2010 Feb	7,961	12,047	150	244
2010 Mar	8,796	12,916	149	234
2010 Apr	9,004	13,398	137	215
2010 May	7,430	12,114	131	208
2010 Jun	20,537	27,576	168	266
2010 Jul	30,176	40,006	202	336
2010 Aug	10,902	21,354	150	287
2010 Sep	10,114	21,777	156	488
2010 Oct	12,044	25,544	195	473
2010 Nov	14,380	29,788	261	602
2010 Dec	17,928	42,414	319	724
2010 Annual	12,910	22,374	178	355
2011 Jan	17,687	44,361	338	779
2011 Feb	17,759	48,052	386	877
2011 Mar	17,451	41,666	419	940
2011 Apr	16,114	38,182	488	1,106
2011 May	18,854	47,312	560	1,199
2011 Jun	18,323	45,802	508	1,141
2011 Jul	24,742	55,809	641	1,285
2011 Aug	28,996	60,531	654	1,348
2011 Sep	27,184	55,706	638	1,267
2011 Oct	21,985	53,830	616	1,345
2011 Nov	26,234	78,486	718	1,682
2011 Dec	29,471	94,316	720	1,837
2011 Annual	22,067	55,338	557	1,234

Hourly volume of bid and cleared INC, DEC and Up-to Congestion bids (MW) by month: January, 2005 through December, 2011



Monthly up-to congestion cleared bids in MWh: January 2006 through December 2011



Key Legal/Regulatory Matters

- **Capacity Portability (EL11-4081)**
- **FE Complaint re FTR Allocation (EL12-19)**
- **Balancing Operating Reserves Cases**
 - **Calculation of LOC (ER12-469)**
 - **Submittal of IBTs (EL12-8)**
- **NYISO Interface pricing Proposal (ER08-1281)**
- **Double Counting Compliance(ER11-3322)**
- **Gross CONE Valuations (ER12-513)**
- **Exelon/CEG Merger (EC11-83; MDPSC Case No. 9271)**
- **Maryland RFP Rules (MDPSC Case No. 9214)**

Monitoring Analytics, LLC

2621 Van Buren Avenue

Suite 160

Eagleville, PA

19403

(610) 271-8050

MA@monitoringanalytics.com

www.MonitoringAnalytics.com

