

## Net Revenue

The Market Monitoring Unit (MMU) analyzed measures of PJM energy market structure, participant conduct and market performance. As part of the review of market performance, the analysis includes the theoretical new entrant net revenues for combustion turbine (CT), combined cycle (CC), coal plant (CP), diesel (DS), nuclear, solar, and wind generating units. The analysis also includes net revenue adequacy for nuclear plants.

## Overview

### Net Revenue

- Energy market net revenues are significantly affected by energy prices and fuel prices. Energy prices and eastern gas prices increased and western gas and coal prices decreased in the first nine months of 2024 compared to the first nine months of 2023. The net effects were that in the first nine months of 2024, average energy market theoretical net revenues increased by 17 percent for a new combustion turbine (CT), increased by 4 percent for a new combined cycle (CC), increased by 130 percent for a new coal plant (CP), increased by 5 percent for a new nuclear plant, increased by 361 percent for a new diesel (DS), increased by 5 percent for a new onshore wind installation, increased by 12 percent for a new offshore wind installation and increased by 17 percent for a new solar installation.
- The price of eastern natural gas increased and the prices of western natural gas and coal decreased in the first nine months of 2024. The marginal costs of a new CC and CT were greater than the marginal cost of a new CP only in January 2024.
- In the first nine months of 2024, spark spreads and dark spreads increased in BGE, COMED, PSEG and Western Hub compared to the first nine months of 2023. The volatility of spark spreads also increased for BGE, COMED, PSEG, and Western Hub compared to the first nine months of 2023.
- Of the 16 PJM nuclear plants analyzed, seven are expected to cover their avoidable costs from energy and capacity market revenues in 2024,

excluding any subsidies. All PJM nuclear plants are expected to have a surplus in 2024 when subsidies are included. All PJM nuclear plants are expected to cover their avoidable costs from energy and capacity market revenues in 2025 and 2026, without subsidies.

## Recommendations

- The MMU recommends that the net revenue calculation used by PJM to calculate the net Cost of New Entry (CONE) and net ACR be based on a forward looking calculation of expected energy and ancillary services net revenues using historical revenues that are scaled based on forward prices for energy and fuel. (Priority: Medium. First reported 2019. Status: Not adopted.)

## Conclusion

Wholesale electric power markets are affected by externally imposed reliability requirements. A regulatory authority external to the market makes a determination as to the acceptable level of reliability which is enforced through a requirement to maintain a target level of installed or unforced capacity. The requirement to maintain a target level of installed capacity can be enforced via a variety of mechanisms, including government construction of generation, full requirement contracts with developers to construct and operate generation, state utility commission mandates to construct capacity, or capacity markets of various types. Regardless of the enforcement mechanism, the exogenous requirement to construct capacity in excess of what is constructed in response to energy market signals alone has an impact on energy markets. The reliability requirement results in maintaining a level of capacity in excess of the level that would result from the operation of an energy market alone. The result of that additional capacity is to reduce the level and volatility of energy market prices and to reduce the duration of high energy market prices. This, in turn, reduces net revenue to generation owners which reduces the incentive to invest. The exact level of both aggregate and locational excess capacity is a function of the calculation methods used by RTOs and ISOs. A basic purpose of the capacity market is allow all cleared capacity resources the opportunity to cover their net avoidable costs on an

annual basis to ensure the economic sustainability of the reliable energy market.

## Net Revenue

When compared to annualized fixed costs and avoidable costs, net revenue is an indicator of generation investment profitability, and thus is a measure of overall market performance as well as a measure of the incentive to invest in new generation and to maintain existing generation in PJM markets. Net revenue equals total revenue received by generators from PJM energy, capacity and ancillary service markets and from the provision of black start and reactive services and capability, and from subsidies like RECs, less the short run marginal costs of energy production. In other words, net revenue is the amount that remains, after the short run marginal costs of energy production have been subtracted from gross revenue. Net revenue is the contribution to fixed costs, which include a return on investment, depreciation and income taxes, and to avoidable costs, which include long term and intermediate term operation and maintenance expenses.<sup>1</sup> Net revenue is the contribution to total fixed and avoidable costs received by generators from all PJM markets.

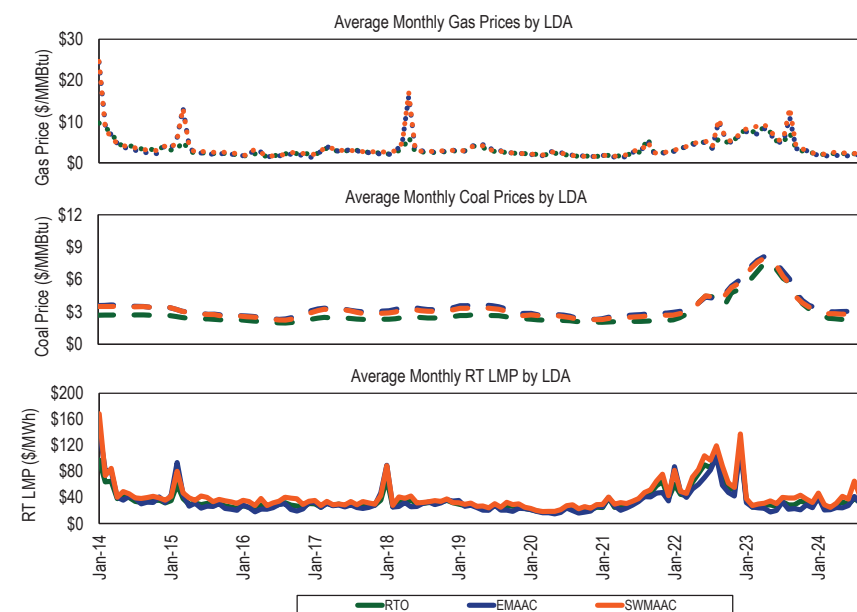
In a perfectly competitive, energy only market in long run equilibrium, net revenue from the energy market would be expected to equal the annualized fixed and avoidable costs for the marginal unit, including a competitive return on investment. The PJM market design includes other markets that contribute to the payment of fixed and avoidable costs. In PJM, the energy, capacity and ancillary service markets are all significant sources of revenue to cover the fixed and avoidable costs of generators, as are payments for the provision of black start and reactive services. Thus, in a perfectly competitive market in long run equilibrium, with energy, capacity and ancillary service markets, net revenue from all sources would be expected to equal the annualized fixed and avoidable costs of generation for the marginal unit. Net revenue is a measure of whether generators are receiving competitive returns on invested capital and of whether market prices are high enough to encourage entry of new capacity and to encourage maintaining existing capacity. In actual wholesale power markets, where equilibrium seldom occurs, net revenue is expected to

<sup>1</sup> Avoidable costs are sometimes referred to as going forward costs.

fluctuate above and below the equilibrium level based on actual conditions in all relevant markets.

Net revenues are significantly affected by energy prices, fuel prices and capacity prices. The real-time load-weighted average LMP in the first nine months of 2024 increased 11.1 percent from the first nine months of 2023, from \$30.87 per MWh to \$34.31 per MWh. Eastern gas prices increased and western gas and coal prices decreased in the first nine months of 2024 compared to the first nine months of 2023. The price of eastern natural gas was 2.8 percent higher, the price of western natural gas was 6.3 percent lower; the price of Northern Appalachian coal was 20.9 percent lower; the price of Central Appalachian coal was 13.8 percent lower; and the price of Powder River Basin coal was 5.3 percent lower (Figure 7-1).

**Figure 7-1 Energy market net revenue factor trends: 2014 through September 2024**



## Spark Spreads and Dark Spreads

The spark or dark spread is defined as the difference between the LMP received for selling power and the cost of fuel used to generate power, converted to a cost per MWh. The spark spread compares power prices to the cost of gas and the dark spread compares power prices to the cost of coal. The spread is a measure of the approximate difference between revenues and marginal costs and is an indicator of net revenue and profitability.

$$\text{Spread} \left( \frac{\$}{\text{MWh}} \right) = \text{LMP} \left( \frac{\$}{\text{MWh}} \right) - \text{Fuel Price} \left( \frac{\$}{\text{MMBtu}} \right) * \text{Heat Rate} \left( \frac{\text{MMBtu}}{\text{MWh}} \right)$$

Spread volatility is a result of fluctuations in LMP and the price of fuel. Spreads can be positive or negative.

In the first nine months of 2024, spark spreads and dark spreads increased in BGE, COMED, PSEG and Western Hub compared to the first nine months of 2023. The volatility of spark spreads and dark spreads also increased in BGE, COMED, PSEG and Western Hub compared to the first nine months of 2023.

Table 7-1 shows average peak hour spreads by year and Table 7-2 shows the associated standard deviations.

**Table 7-1 Peak hour spark and dark spreads (\$/MWh)**

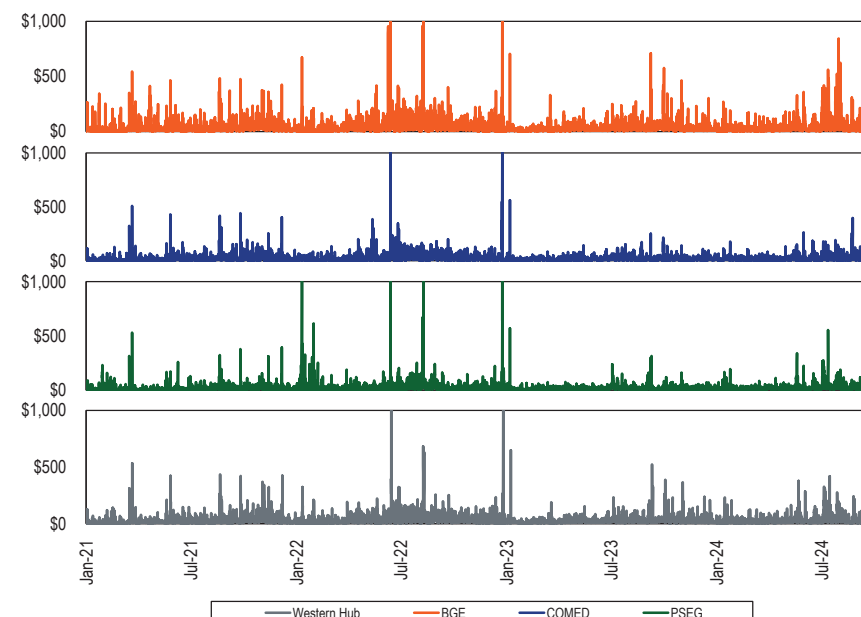
	BGE		COMED		PSEG		Western Hub	
Jan-Sep	Spark	Dark	Spark	Dark	Spark	Dark	Spark	Dark
2023	\$28.07	\$8.89	\$15.59	\$8.41	\$13.71	(\$8.47)	\$21.72	\$3.07
2024	\$36.35	\$24.84	\$18.96	\$13.59	\$18.12	\$0.94	\$26.32	\$15.15
Percent change	29%	179%	22%	62%	32%	NA	21%	394%

**Table 7-2 Peak hour spark and dark spread standard deviation (\$/MWh)**

	BGE		COMED		PSEG		Western Hub	
Jan-Sep	Spark	Dark	Spark	Dark	Spark	Dark	Spark	Dark
2023	\$32.7	\$33.1	\$19.4	\$19.7	\$23.0	\$21.4	\$29.2	\$25.7
2024	\$57.2	\$57.2	\$27.6	\$27.3	\$28.9	\$29.4	\$33.8	\$33.4
Percent change	75%	73%	42%	38%	25%	38%	16%	30%

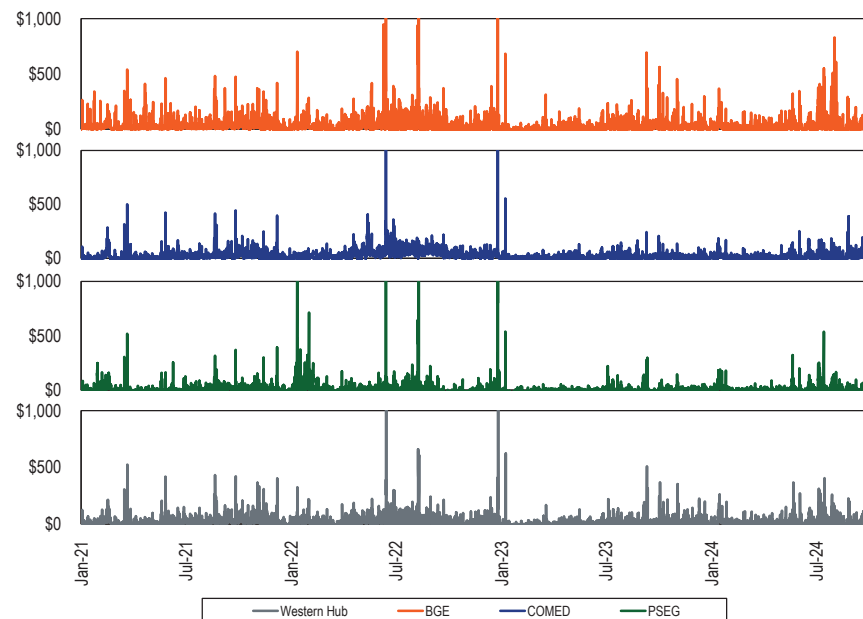
Figure 7-2 shows the hourly spark spread for peak hours for BGE, COMED, PSEG, and Western Hub.

**Figure 7-2 Hourly spark spread (gas) for peak hours (\$/MWh): 2021 through September 2024<sup>2</sup>**



<sup>2</sup> Spark spreads use a combined cycle heat rate of 7,000 Btu/kWh, zonal hourly LMPs and daily gas prices; Chicago City Gate for COMED, Zone 6 non-NY for BGE, Zone 6 NY for PSEG, and Texas Eastern M3 for Western Hub.

Figure 7-3 Hourly dark spread (coal) for peak hours (\$/MWh): 2021 through September 2024<sup>3</sup>



<sup>3</sup> Dark spreads use a heat rate of 10,000 Btu/kWh, zonal hourly LMPs, daily coal prices, and average transportation costs by coal type; Powder River Basin coal for COMED, Northern Appalachian coal for BGE and Western Hub, and Central Appalachian coal for PSEG.

## Theoretical Energy Market Net Revenue

The net revenues presented in this section are theoretical as they are based on explicitly stated assumptions about how a new unit with specific characteristics would operate under economic dispatch. The economic dispatch uses technology specific operating constraints in the calculation of a new unit's operations and potential net revenue in PJM markets.

Analysis of energy market net revenues for a new unit includes eight power plant configurations:

- The CT plant is a single GE Frame 7HA.02 CT with an installed capacity of 360.1 MW, equipped with evaporative coolers, and selective catalytic reduction (SCR) for NO<sub>x</sub> reduction.
- The CC plant includes two single shaft 1x1 GE Frame 7HA.02 CTs, each with a single combustion turbine, heat recovery steam generator, and steam turbine with a total installed capacity of 1,100 MW, equipped with SCR for NO<sub>x</sub> reduction, dry cooling, duct burners, and dual fuel capability.
- The CP is a subcritical steam unit with an installed capacity of 600.0 MW, equipped with selective catalytic reduction system (SCR) for NO<sub>x</sub> control, a flue gas desulphurization (FGD) system with chemical injection for SO<sub>x</sub> and mercury control, and a baghouse for particulate control.
- The DS plant is a single oil fired CAT 2 MW unit with an installed capacity of 2.0 MW using New York Harbor ultra low sulfur diesel.
- The nuclear plant includes two units and related facilities using the Westinghouse AP1000 technology with an installed capacity of 2,200 MW.
- The onshore wind installation includes 104 Siemens 2.9 MW wind turbines with an installed capacity of 301.6 MW.
- The offshore wind installation includes 40 Siemens 10.0 MW wind turbines with an installed capacity of 400.0 MW.
- The solar installation is a 472 acre ground mounted tracking solar farm with an installed AC capacity of 200 MW.
- The battery storage unit is a 2.5 MW, 10 hour battery capable of providing 2.5 MWh for 10 hours, or 25 MWh.

Net revenue calculations for the CT, CC and CP include the hourly effect of actual local ambient air temperature on plant heat rates and generator output for each of the three plant configurations.<sup>4 5</sup> Plant heat rates account for the efficiency changes and corresponding cost changes resulting from ambient air temperatures.

CO<sub>2</sub>, NO<sub>x</sub> and SO<sub>2</sub> emission allowance costs are included in the hourly plant dispatch cost, the short run marginal cost.<sup>6</sup> CO<sub>2</sub>, NO<sub>x</sub> and SO<sub>2</sub> emission allowance costs were obtained from daily spot cash prices.<sup>7</sup>

The class average equivalent availability factor for each type of plant was calculated from PJM data and incorporated into all revenue calculations.<sup>8</sup>

Zonal net revenues reflect average zonal LMP and fuel costs based on locational fuel indices and zone specific delivery charges.<sup>9</sup> The delivered fuel cost for natural gas reflects the zonal, daily delivered price of natural gas from a specific pipeline and is from published commodity daily cash prices, with a basis adjustment for transportation costs.<sup>10</sup> The delivered cost of coal reflects the zone specific, delivered price of coal and was developed from the published prompt month prices, adjusted for rail transportation costs.<sup>11</sup> Net revenues are calculated for all zones except OVEC.<sup>12</sup>

Short run marginal cost includes fuel costs, emissions costs, and the short run marginal component of VOM costs.<sup>13 14</sup> Average short run marginal costs are shown, including all components, in Table 7-3 and the short run marginal component of VOM is also shown separately.

**Table 7-3 Average short run marginal costs: January through September, 2024**

Unit Type	Short Run Marginal Costs (\$/MWh)	Heat Rate (Btu/kWh)	VOM (\$/MWh)
CT	\$30.45	9,241	\$0.54
CC	\$18.62	6,369	\$0.88
CP	\$36.54	9,250	\$5.64
DS	\$192.70	9,660	\$0.25
Nuclear	\$0.00	NA	\$0.00
Wind	\$0.00	NA	\$0.00
Wind (off shore)	\$0.00	NA	\$0.00
Solar	\$0.00	NA	\$0.00

A comparison of the monthly average short run marginal cost of the theoretical CT, CC and CP plants since 2014 shows that, on average, the short run marginal costs of the CC plant have been less than those of the CP plant but the costs of the CC plant have been more volatile than the costs of the CP plant as a result of the higher volatility of gas prices compared to coal prices (Figure 7-4). The marginal costs of a new CC and CT were greater than the marginal cost of a new CP only in January 2024. The marginal costs are based on spot fuel costs. Individual generation plants may have contracts for coal that differ significantly from spot prices.

<sup>4</sup> Hourly ambient conditions supplied by DTN.

<sup>5</sup> Heat rates provided by Pasteris Energy, Inc. No load costs are included in the dispatch price since each unit type is dispatched at full load for every economic hour resulting in a single offer point.

<sup>6</sup> CO<sub>2</sub> emission allowance costs only included for states participating in RGGI.

<sup>7</sup> CO<sub>2</sub>, NO<sub>x</sub> and SO<sub>2</sub> emission daily prompt prices obtained from Evolution Markets, Inc.

<sup>8</sup> Outage figures obtained from the PJM eGADS database.

<sup>9</sup> Startup fuel burns and emission rates provided by Pasteris Energy, Inc. Startup station power consumption costs were obtained from the station service rates published quarterly by PJM and netted against the MW produced during startup at the preceding applicable hourly LMP. All starts associated with combined cycle units are assumed to be warm starts.

<sup>10</sup> Gas daily cash prices obtained from Platts.

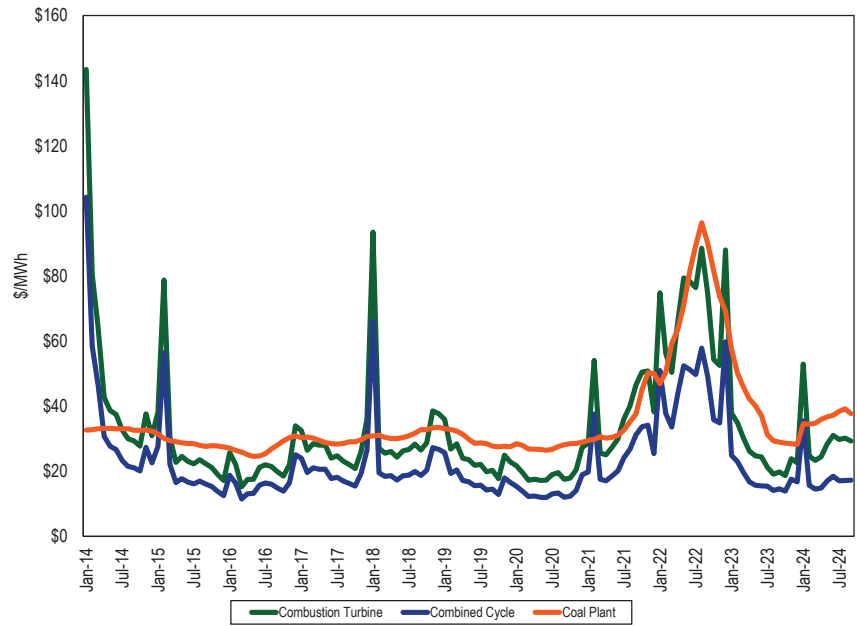
<sup>11</sup> Coal prompt month prices obtained from Platts.

<sup>12</sup> The Ohio Valley Electric Corporation (OVEC) includes a generating plant in Ohio and a generating plant in Indiana, and high voltage transmission lines, but does not occupy a single geographic footprint like the other control zones.

<sup>13</sup> Fuel costs are calculated using the daily spot price and may not equal what individual participants actually paid.

<sup>14</sup> VOM rates provided by Pasteris Energy, Inc.

Figure 7-4 Average short run marginal costs: 2014 through September 2024



The net revenue measure does not include the potentially significant contribution from the explicit or implicit sale of the option value of physical units or from bilateral agreements to sell output at a price other than the PJM day-ahead or real-time energy market prices, e.g., a forward price.

Gas prices, coal prices, and energy prices are reflected in new unit capacity factors. Table 7-4 shows the average capacity factor for new units. The capacity factors for a new CT and CC decreased in the first nine months of 2024 compared to the first nine months of 2023. CP capacity factors in the first nine months of 2024 are consistent with historical capacity factors, after an extremely low capacity factor in the first nine months of 2023.

Table 7-4 Average capacity factor: January through September, 2014 through 2024

Jan-Sep	CT	CC	CP	DS	Nuclear	On Shore	
						Wind	Solar
2014	48%	75%	62%	4%	91%	23%	17%
2015	63%	76%	57%	3%	92%	22%	19%
2016	71%	78%	48%	1%	91%	22%	17%
2017	53%	72%	40%	1%	93%	25%	19%
2018	58%	81%	42%	3%	94%	25%	18%
2019	51%	79%	24%	1%	92%	25%	19%
2020	50%	79%	11%	1%	93%	24%	18%
2021	40%	78%	39%	1%	93%	23%	18%
2022	40%	78%	35%	1%	92%	24%	19%
2023	54%	75%	19%	0%	93%	23%	17%
2024	50%	66%	32%	1%	93%	23%	21%

### New Entrant Combustion Turbine

Energy market net revenue was calculated for a new CT plant economically dispatched by PJM. It was assumed that the CT plant had a minimum run time of two hours. The unit was first committed day ahead in profitable blocks of at least two hours, including start costs. If the unit was not already committed day ahead, it was run in real time in standalone profitable blocks of at least two hours, or any additional profitable hours bordering the profitable day-ahead or real-time block.

The new entrant CT is larger and more efficient than most CTs currently operating in PJM. The new entrant CT energy market net revenue results must therefore be interpreted carefully when comparing to existing CTs which are generally smaller and less efficient than the newest CT technology used by the new entrant CT.

New entrant CT plant energy market net revenues were lower in 7 of the 20 zones in the first nine months of 2024 as a result of the relative changes in energy and gas prices in those zones (Table 7-5).

**Table 7-5 Energy net revenue for a new entrant gas fired CT under economic dispatch: January through September, 2014 through 2024 (Dollars per installed MW-year)<sup>15</sup>**

Zone	Jan-Sep											Change in 2024 from 2023
	2014	2015	2016	2017	2018	2019	2020	2021	2022	2023	2024	
ACEC	\$73,405	\$41,708	\$46,249	\$22,093	\$26,654	\$20,547	\$5,743	\$10,290	\$31,629	\$18,535	\$13,747	(26%)
AEP	\$67,449	\$54,923	\$47,821	\$26,232	\$66,440	\$32,619	\$28,343	\$34,229	\$84,256	\$47,744	\$60,209	26%
APS	\$90,853	\$86,337	\$51,965	\$31,277	\$67,802	\$17,863	\$14,195	\$23,621	\$57,551	\$45,600	\$25,497	(44%)
ATSI	\$49,411	\$47,866	\$46,175	\$27,588	\$78,519	\$33,933	\$28,701	\$33,750	\$78,372	\$43,461	\$71,851	65%
BGE	\$88,636	\$60,519	\$79,045	\$32,085	\$47,455	\$25,748	\$22,946	\$34,435	\$93,840	\$66,508	\$51,907	(22%)
COMED	\$31,315	\$25,079	\$29,620	\$17,939	\$29,727	\$18,371	\$15,930	\$22,137	\$60,292	\$33,158	\$46,901	41%
DAY	\$44,343	\$44,007	\$44,581	\$26,759	\$74,664	\$37,463	\$32,823	\$45,405	\$93,162	\$51,671	\$77,784	51%
DOM	\$59,304	\$51,218	\$55,122	\$27,695	\$51,983	\$27,191	\$23,669	\$39,286	\$99,843	\$51,255	\$71,649	40%
DPL	\$58,747	\$27,998	\$24,357	\$10,733	\$21,770	\$13,405	\$8,166	\$22,060	\$52,631	\$38,060	\$32,410	(15%)
DUKE	\$40,531	\$41,305	\$42,521	\$25,534	\$82,843	\$33,962	\$29,196	\$42,284	\$87,770	\$49,230	\$71,143	45%
DUQ	\$39,013	\$62,838	\$61,651	\$34,218	\$50,815	\$22,957	\$24,168	\$28,662	\$68,985	\$60,075	\$66,338	10%
EKPC	\$59,896	\$43,174	\$41,526	\$21,852	\$50,179	\$26,697	\$24,964	\$31,657	\$75,449	\$40,349	\$49,746	23%
JCPLC	\$74,696	\$40,861	\$41,674	\$25,592	\$27,533	\$19,586	\$6,288	\$9,372	\$30,180	\$18,366	\$12,522	(32%)
MEC	\$72,367	\$72,623	\$61,579	\$42,471	\$38,978	\$23,145	\$25,643	\$36,920	\$96,323	\$39,606	\$52,917	34%
PE	\$121,487	\$120,357	\$76,585	\$41,150	\$75,603	\$29,818	\$31,263	\$39,860	\$90,900	\$64,507	\$82,907	29%
PECO	\$74,378	\$71,310	\$58,363	\$33,913	\$35,130	\$18,652	\$18,545	\$19,682	\$48,635	\$25,171	\$44,386	76%
PEPCO	\$64,618	\$39,478	\$40,681	\$20,329	\$38,778	\$15,797	\$11,062	\$22,063	\$51,285	\$33,796	\$34,293	1%
PPL	\$190,484	\$139,459	\$62,799	\$38,323	\$77,618	\$21,159	\$19,976	\$35,373	\$89,011	\$42,353	\$59,511	41%
PSEG	\$90,869	\$83,039	\$62,484	\$39,212	\$39,815	\$20,785	\$6,299	\$13,134	\$33,757	\$18,587	\$12,154	(35%)
REC	\$66,401	\$46,358	\$45,660	\$26,864	\$29,648	\$20,669	\$7,102	\$21,483	\$37,341	\$23,561	\$13,052	(45%)
PJM	\$58,381	\$60,023	\$51,023	\$28,593	\$50,598	\$24,018	\$19,251	\$28,285	\$68,061	\$40,580	\$47,546	17%

<sup>15</sup> The energy net revenues presented for the PJM area in this section are calculated using the zonal average LMP.



## New Entrant Combined Cycle

Energy market net revenue was calculated for a new CC plant economically dispatched by PJM. It was assumed that the CC plant had a minimum run time of four hours. The unit was first committed day ahead in profitable blocks of at least four hours, including start costs.<sup>16</sup> The unit was allowed to extend its run in real time if it was profitable to do so.

New entrant CC plant energy market net revenues were lower in 8 of the 20 zones in the first nine months of 2024 as a result of the relative changes in energy and gas prices in those zones (Table 7-6).

**Table 7-6 Energy net revenue for a new entrant CC under economic dispatch: January through September, 2014 through 2024 (Dollars per installed MW-year)<sup>17</sup>**

Zone	Jan-Sep											Change in 2024
	2014	2015	2016	2017	2018	2019	2020	2021	2022	2023	2024	from 2023
ACEC	\$107,700	\$62,168	\$56,886	\$39,174	\$50,966	\$41,724	\$22,926	\$30,946	\$59,195	\$27,837	\$18,504	(34%)
AEP	\$92,815	\$77,655	\$62,247	\$44,434	\$92,617	\$56,774	\$44,425	\$61,016	\$156,624	\$76,251	\$84,304	11%
APS	\$131,582	\$118,635	\$80,327	\$54,564	\$102,536	\$48,260	\$39,833	\$59,701	\$122,585	\$67,327	\$39,292	(42%)
ATSI	\$69,129	\$71,026	\$61,144	\$45,061	\$102,961	\$57,830	\$44,671	\$61,626	\$149,711	\$71,671	\$95,279	33%
BGE	\$133,084	\$95,354	\$106,523	\$57,009	\$83,020	\$58,009	\$50,680	\$73,303	\$158,802	\$91,285	\$71,815	(21%)
COMED	\$40,701	\$41,928	\$43,638	\$30,194	\$47,185	\$35,931	\$28,771	\$40,983	\$111,441	\$54,086	\$62,726	16%
DAY	\$62,981	\$68,115	\$60,283	\$45,341	\$100,422	\$61,853	\$49,281	\$74,584	\$168,028	\$81,438	\$101,579	25%
DOM	\$89,684	\$76,237	\$71,013	\$46,788	\$76,716	\$51,745	\$40,594	\$65,887	\$165,930	\$80,837	\$94,334	17%
DPL	\$89,342	\$43,314	\$38,818	\$18,293	\$35,953	\$19,416	\$11,694	\$31,060	\$82,570	\$47,426	\$40,862	(14%)
DUKE	\$55,669	\$63,890	\$57,594	\$42,793	\$106,861	\$57,909	\$45,372	\$69,534	\$160,692	\$78,439	\$94,626	21%
DUQ	\$62,643	\$74,406	\$71,816	\$49,873	\$77,284	\$44,548	\$40,878	\$54,321	\$133,467	\$85,815	\$89,113	4%
EKPC	\$81,876	\$66,320	\$55,747	\$39,454	\$76,898	\$50,190	\$41,067	\$57,851	\$143,528	\$68,621	\$72,887	6%
JCPLC	\$110,941	\$61,681	\$52,688	\$42,416	\$51,793	\$41,341	\$23,460	\$31,507	\$58,853	\$28,351	\$16,854	(41%)
MEC	\$103,311	\$87,534	\$68,353	\$55,898	\$64,015	\$45,180	\$40,376	\$63,212	\$156,206	\$64,015	\$75,541	18%
PE	\$151,728	\$125,644	\$81,939	\$55,665	\$99,692	\$53,422	\$45,753	\$68,989	\$164,023	\$89,111	\$104,617	17%
PECO	\$107,953	\$88,284	\$65,466	\$48,832	\$62,412	\$39,572	\$33,222	\$45,013	\$91,624	\$44,852	\$65,922	47%
PEPCO	\$100,641	\$73,941	\$70,434	\$42,566	\$71,155	\$44,697	\$32,087	\$49,752	\$100,034	\$54,400	\$45,779	(16%)
PPL	\$204,880	\$137,227	\$69,121	\$52,350	\$96,714	\$41,840	\$34,576	\$61,216	\$159,222	\$65,329	\$79,705	22%
PSEG	\$131,707	\$100,778	\$69,820	\$53,889	\$67,714	\$43,435	\$24,685	\$35,851	\$61,501	\$28,384	\$15,888	(44%)
REC	\$103,106	\$65,662	\$56,066	\$43,741	\$53,424	\$43,108	\$25,788	\$43,568	\$72,081	\$34,420	\$17,852	(48%)
PJM	\$100,026	\$79,990	\$64,996	\$45,417	\$76,017	\$46,839	\$36,007	\$53,996	\$123,806	\$61,995	\$64,374	4%

<sup>16</sup> All starts associated with combined cycle units are assumed to be warm starts.

<sup>17</sup> The energy net revenues presented for the PJM area in this section represent the zonal average energy net revenues.



## New Entrant Coal Plant

Energy market net revenue was calculated for a new CP plant economically dispatched by PJM. It was assumed that the CP plant had a minimum run time of eight hours. The unit was first committed day ahead in profitable blocks of at least eight hours, including start costs. The unit was allowed to extend its run in real time if it was profitable to do so.

New entrant CP plant energy market net revenues were higher in all zones in the first nine months of 2024 as a result of higher dark spreads (Table 7-7).

**Table 7-7 Energy net revenue for a new entrant CP: January through September, 2014 through 2024 (Dollars per installed MW-year)<sup>18</sup>**

Zone	Jan-Sep										Change in 2024	
	2014	2015	2016	2017	2018	2019	2020	2021	2022	2023	2024	from 2023
ACEC	\$113,398	\$47,038	\$10,176	\$3,349	\$29,606	\$3,777	\$179	\$5,784	\$10,591	\$4,384	\$6,751	54%
AEP	\$101,550	\$45,454	\$30,945	\$26,763	\$52,538	\$12,589	\$4,193	\$40,314	\$33,649	\$7,768	\$35,720	360%
APS	\$100,484	\$40,907	\$12,174	\$12,354	\$39,299	\$4,619	\$1,988	\$14,164	\$17,454	\$10,397	\$10,722	3%
ATSI	\$112,748	\$47,552	\$27,158	\$27,067	\$54,195	\$10,452	\$2,774	\$33,583	\$42,104	\$9,147	\$32,168	252%
BGE	\$160,039	\$77,059	\$42,361	\$12,521	\$47,695	\$7,999	\$4,767	\$23,102	\$48,926	\$23,876	\$29,763	25%
COMED	\$100,679	\$35,752	\$21,437	\$21,515	\$26,276	\$11,102	\$1,478	\$39,918	\$175,681	\$42,490	\$52,660	24%
DAY	\$104,869	\$45,060	\$25,861	\$25,582	\$52,374	\$12,280	\$5,245	\$45,574	\$32,898	\$9,303	\$39,672	326%
DOM	\$144,105	\$81,887	\$39,456	\$18,363	\$57,001	\$12,827	\$5,546	\$42,998	\$105,920	\$21,935	\$56,206	156%
DPL	\$153,229	\$67,849	\$20,071	\$8,560	\$43,597	\$9,115	\$4,101	\$18,483	\$34,764	\$20,073	\$21,513	7%
DUKE	\$95,548	\$41,037	\$23,659	\$23,198	\$58,239	\$10,811	\$4,340	\$41,361	\$30,385	\$8,784	\$35,455	304%
DUQ	\$87,906	\$36,914	\$23,742	\$24,388	\$54,041	\$9,411	\$3,853	\$31,965	\$37,383	\$8,438	\$31,485	273%
EKPC	\$92,512	\$34,882	\$19,929	\$18,799	\$35,031	\$7,634	\$3,462	\$35,529	\$28,127	\$7,127	\$32,852	361%
JCPLC	\$117,588	\$46,725	\$7,563	\$4,344	\$30,331	\$3,387	\$765	\$5,606	\$11,494	\$4,183	\$6,112	46%
MEC	\$144,624	\$64,202	\$17,424	\$14,224	\$43,173	\$7,414	\$4,754	\$30,300	\$69,689	\$7,355	\$24,719	236%
PE	\$119,745	\$57,342	\$21,026	\$10,659	\$38,207	\$7,005	\$3,019	\$27,466	\$46,167	\$7,983	\$32,571	308%
PECO	\$109,397	\$44,739	\$8,406	\$3,368	\$29,236	\$3,625	\$254	\$12,268	\$20,125	\$4,485	\$13,609	203%
PEPCO	\$112,907	\$39,127	\$9,917	\$2,959	\$29,507	\$3,734	\$508	\$14,243	\$19,419	\$9,114	\$19,341	112%
PPL	\$108,732	\$43,645	\$6,736	\$3,547	\$28,721	\$2,338	\$359	\$15,285	\$25,307	\$4,306	\$11,943	177%
PSEG	\$163,820	\$72,273	\$12,359	\$7,058	\$35,677	\$5,064	\$257	\$5,807	\$20,921	\$4,825	\$6,105	27%
REC	\$158,832	\$72,439	\$11,758	\$6,912	\$34,884	\$5,981	\$680	\$11,050	\$24,190	\$4,322	\$7,034	63%
PJM	\$120,136	\$52,094	\$19,608	\$13,776	\$40,981	\$7,558	\$2,626	\$24,740	\$41,760	\$11,015	\$25,320	130%

<sup>18</sup> The energy net revenues presented for the PJM area in this section represent the zonal average energy net revenues.

## New Entrant Nuclear Plant

Energy market net revenue was calculated assuming that the nuclear plant was dispatched day ahead by PJM for all available plant hours. The unit runs for all hours and output reflects the class average equivalent availability factor.<sup>19</sup>

New entrant nuclear plant energy market net revenues were slightly lower in five zones and higher in 15 zones in the first nine months of 2024 as a result of changes in day-ahead energy prices by zone (Table 7-8).

**Table 7-8 Energy net revenue for a new entrant nuclear plant: January through September, 2014 through 2024 (Dollars per installed MW-year)<sup>20</sup>**

Zone	Jan-Sep											Change in 2024
	2014	2015	2016	2017	2018	2019	2020	2021	2022	2023	2024	from 2023
ACEC	\$360,915	\$229,102	\$152,141	\$165,191	\$213,169	\$148,853	\$107,061	\$180,256	\$389,808	\$147,539	\$166,161	13%
AEP	\$286,963	\$204,221	\$167,316	\$178,362	\$218,529	\$163,269	\$124,405	\$206,222	\$433,840	\$189,325	\$188,240	(1%)
APS	\$311,630	\$225,877	\$172,174	\$179,527	\$230,145	\$163,243	\$124,485	\$204,549	\$439,825	\$193,181	\$195,506	1%
ATSI	\$299,869	\$208,113	\$169,248	\$181,909	\$229,744	\$165,213	\$124,987	\$203,527	\$429,077	\$187,587	\$190,076	1%
BGE	\$400,502	\$278,999	\$222,930	\$196,171	\$255,697	\$178,806	\$139,161	\$229,760	\$506,498	\$230,332	\$248,080	8%
COMED	\$258,226	\$175,674	\$156,006	\$166,122	\$172,584	\$147,141	\$113,554	\$194,154	\$382,686	\$164,292	\$159,205	(3%)
DAY	\$289,914	\$204,805	\$168,415	\$182,281	\$226,966	\$169,847	\$130,249	\$218,439	\$448,879	\$198,572	\$197,321	(1%)
DOM	\$353,605	\$251,055	\$185,648	\$188,523	\$247,128	\$170,020	\$126,856	\$221,515	\$513,644	\$215,302	\$225,879	5%
DPL	\$384,366	\$248,859	\$174,096	\$174,105	\$232,687	\$158,433	\$114,761	\$202,715	\$413,970	\$166,809	\$190,478	14%
DUKE	\$278,699	\$199,944	\$165,436	\$179,053	\$234,243	\$165,438	\$125,799	\$212,664	\$441,154	\$195,379	\$189,648	(3%)
DUQ	\$270,088	\$195,317	\$164,951	\$178,387	\$229,363	\$162,886	\$126,588	\$200,496	\$420,972	\$185,093	\$187,870	2%
EKPC	\$274,997	\$192,691	\$160,945	\$173,419	\$203,840	\$160,268	\$123,371	\$204,660	\$435,731	\$189,988	\$185,060	(3%)
JCPLC	\$364,815	\$227,874	\$146,982	\$169,405	\$213,944	\$148,377	\$107,801	\$180,926	\$397,338	\$151,037	\$165,718	10%
MEC	\$349,545	\$221,331	\$148,453	\$173,836	\$213,225	\$152,073	\$113,794	\$198,614	\$456,180	\$163,150	\$175,115	7%
PE	\$323,485	\$220,294	\$160,794	\$172,815	\$217,995	\$157,504	\$118,552	\$197,242	\$425,954	\$180,145	\$192,999	7%
PECO	\$353,646	\$223,312	\$145,566	\$164,881	\$211,302	\$145,791	\$105,656	\$178,095	\$384,359	\$142,144	\$164,404	16%
PEPCO	\$388,376	\$262,198	\$198,294	\$191,299	\$248,756	\$173,483	\$129,574	\$220,188	\$488,466	\$219,512	\$233,598	6%
PPL	\$350,494	\$221,731	\$145,926	\$167,451	\$206,624	\$144,711	\$106,689	\$185,085	\$419,729	\$151,063	\$163,664	8%
PSEG	\$385,152	\$237,992	\$150,318	\$171,295	\$218,177	\$150,459	\$108,427	\$185,947	\$403,646	\$152,583	\$167,105	10%
REC	\$379,412	\$239,194	\$150,110	\$172,155	\$218,908	\$153,663	\$111,146	\$198,097	\$418,357	\$163,228	\$179,408	10%
PJM	\$333,235	\$223,429	\$165,287	\$176,309	\$222,151	\$158,974	\$119,146	\$201,158	\$432,506	\$179,313	\$188,277	5%

<sup>19</sup> The annual class average equivalent availability factor was used in the calculation of energy market net revenues.

<sup>20</sup> The energy net revenues presented for the PJM area in this section represent the zonal average energy net revenues because fuel costs for nuclear units are included in the NEI nuclear costs.

## New Entrant Diesel

Energy market net revenue was calculated for a DS plant economically dispatched by PJM in real time.

New entrant DS plant energy market net revenues were higher in all zones in the first nine months of 2024 as a result of higher and more volatile energy prices (Table 7-9).

**Table 7-9 Energy market net revenue for a new entrant DS: January through September, 2014 through 2024 (Dollars per installed MW-year)**

Zone	Jan-Sep											Change in 2024 from 2023
	2014	2015	2016	2017	2018	2019	2020	2021	2022	2023	2024	
ACEC	\$32,623	\$12,075	\$2,405	\$800	\$9,969	\$1,849	\$448	\$1,213	\$9,466	\$311	\$2,336	651%
AEP	\$14,425	\$3,691	\$831	\$1,334	\$4,113	\$2,109	\$641	\$2,657	\$4,197	\$467	\$1,512	224%
APS	\$17,985	\$7,169	\$910	\$1,194	\$6,619	\$1,864	\$1,616	\$2,367	\$4,454	\$506	\$1,423	181%
ATSI	\$14,091	\$3,468	\$1,973	\$1,660	\$6,951	\$1,862	\$2,056	\$2,231	\$4,184	\$503	\$2,691	435%
BGE	\$49,568	\$15,595	\$7,196	\$2,314	\$12,647	\$3,220	\$3,503	\$5,992	\$12,078	\$1,114	\$12,903	1,059%
COMED	\$11,311	\$2,151	\$638	\$1,267	\$702	\$1,623	\$336	\$2,690	\$2,818	\$217	\$1,185	447%
DAY	\$14,235	\$3,444	\$905	\$1,569	\$3,809	\$2,201	\$546	\$3,901	\$4,336	\$482	\$2,196	356%
DOM	\$42,535	\$11,136	\$2,193	\$1,798	\$14,452	\$2,567	\$1,115	\$7,182	\$11,090	\$1,499	\$6,499	334%
DPL	\$37,438	\$16,044	\$3,417	\$1,966	\$13,916	\$6,074	\$7,559	\$13,240	\$13,160	\$5,946	\$10,999	85%
DUKE	\$13,404	\$2,885	\$1,291	\$2,991	\$6,473	\$2,092	\$417	\$3,572	\$4,134	\$476	\$1,438	202%
DUQ	\$12,963	\$2,951	\$2,279	\$1,403	\$7,949	\$1,767	\$3,428	\$2,454	\$4,159	\$499	\$4,903	882%
EKPC	\$14,441	\$2,730	\$851	\$896	\$1,892	\$1,964	\$450	\$3,366	\$4,213	\$459	\$1,431	212%
JCPLC	\$32,717	\$13,021	\$870	\$1,103	\$11,091	\$1,774	\$1,248	\$1,098	\$9,111	\$314	\$2,414	669%
MEC	\$31,781	\$12,875	\$886	\$2,585	\$10,938	\$1,458	\$1,722	\$3,983	\$11,703	\$431	\$2,627	509%
PE	\$15,964	\$6,410	\$876	\$1,247	\$5,438	\$1,213	\$905	\$1,579	\$3,995	\$396	\$1,664	320%
PECO	\$32,130	\$12,366	\$862	\$1,047	\$9,804	\$1,852	\$513	\$1,254	\$9,424	\$292	\$3,516	1,104%
PEPCO	\$51,173	\$11,388	\$2,939	\$1,757	\$12,291	\$2,777	\$1,110	\$4,210	\$10,574	\$935	\$7,663	719%
PPL	\$32,719	\$13,011	\$773	\$1,643	\$8,764	\$893	\$400	\$1,877	\$7,641	\$342	\$2,278	566%
PSEG	\$32,303	\$12,629	\$930	\$1,103	\$10,277	\$2,120	\$292	\$1,626	\$9,404	\$308	\$1,722	459%
REC	\$29,837	\$13,705	\$973	\$1,113	\$9,530	\$2,084	\$595	\$6,116	\$9,128	\$331	\$1,500	353%
PJM	\$29,787	\$8,937	\$1,700	\$1,539	\$8,381	\$2,168	\$1,445	\$3,630	\$7,463	\$791	\$3,645	361%

## New Entrant Onshore Wind Installation

Energy market net revenues for an onshore wind installation were calculated hourly assuming the unit generated at the average hourly capacity factor of all operating wind units in the zone with an installed capacity greater than 3 MW.<sup>21</sup>

Onshore wind energy market net revenues in the first nine months of 2024 were higher or flat as a result of changes in energy prices.

**Table 7-10 Energy market net revenue for an onshore wind installation (Dollars per installed MW-year): January through September, 2014 through 2024**

Jan-Sep												Change in 2024 from 2023
Zone	2014	2015	2016	2017	2018	2019	2020	2021	2022	2023	2024	
AEP	\$80,488	\$54,850	\$45,842	\$48,743	\$69,611	\$49,912	\$30,754	\$47,276	\$106,828	\$46,094	\$49,330	7%
APS	\$83,957	\$55,410	\$40,843	\$51,330	\$69,984	\$42,199	\$32,374	\$42,649	\$96,708	\$45,219	\$45,229	0%
COMED	\$72,887	\$46,732	\$39,315	\$48,121	\$46,613	\$44,297	\$26,061	\$46,357	\$97,383	\$37,238	\$40,995	10%
PE	\$101,629	\$67,821	\$42,369	\$50,687	\$69,843	\$41,131	\$28,813	\$40,510	\$90,826	\$36,527	\$37,069	1%

## New Entrant Offshore Wind Installation

Energy market net revenues for an offshore wind installation were calculated hourly assuming the unit generated at a 40 percent capacity factor.

Offshore wind energy market net revenues were higher in the first nine months of 2024 as a result of higher energy prices.

**Table 7-11 Energy market net revenue for an offshore wind installation (Dollars per installed MW-year): January through September, 2014 through 2024**

Jan-Sep												Change in 2024 from 2023
Zone	2014	2015	2016	2017	2018	2019	2020	2021	2022	2023	2024	
ACEC	\$149,772	\$96,219	\$64,564	\$69,660	\$90,860	\$64,497	\$46,801	\$76,737	\$170,516	\$60,970	\$71,916	18%
DOM	\$157,995	\$104,655	\$79,002	\$79,539	\$105,879	\$72,441	\$54,828	\$97,137	\$231,511	\$91,249	\$96,009	5%
DPL	\$160,094	\$105,291	\$71,639	\$73,520	\$100,412	\$69,266	\$51,820	\$90,525	\$184,874	\$71,504	\$81,573	14%

<sup>21</sup> Net revenues are calculated for zones in which there are sufficient operating units to determine capacity factor for a new entrant unit.

## New Entrant Solar Installation

Energy market net revenues for a solar installation were calculated hourly assuming the unit was generating at the average hourly capacity factor of operating solar units in the zone with an installed capacity greater than 3 MW.<sup>22</sup>

Solar energy market net revenues in the first nine months of 2024 were higher as a result of higher energy prices.

Under cost of service regulation, units are guaranteed that they will cover their total costs, assuming that the costs were determined to be reasonable. To the extent that units built in the PJM markets did not cover their total costs, investors were worse off and customers were better off than under cost of service regulation, ignoring the benefits of competition on increasing efficiency, reducing costs and improving technology and ignoring the possibility of over earning under cost of service regulation.

**Table 7-12 Energy market net revenue for a solar installation (Dollars per installed MW-year): January through September, 2014 through 2024**

Zone	Jan-Sep											Change in 2024 from 2023
	2014	2015	2016	2017	2018	2019	2020	2021	2022	2023	2024	
ACEC	\$60,221	\$43,274	\$32,609	\$31,056	\$35,469	\$27,917	\$19,596	\$32,504	\$81,463	\$25,279	\$32,178	27%
DOM	-	-	\$58,175	\$57,902	\$65,866	\$49,013	\$36,735	\$68,442	\$193,528	\$63,208	\$65,750	4%
DPL	-	-	\$37,917	\$42,030	\$51,312	\$39,029	\$27,848	\$40,417	\$94,522	\$41,173	\$50,497	23%
JCPLC	\$56,051	\$36,464	\$28,520	\$30,176	\$33,486	\$25,962	\$19,723	\$31,508	\$75,466	\$23,982	\$27,818	16%
PSEG	\$54,074	\$42,695	\$32,929	\$33,321	\$36,560	\$29,236	\$21,338	\$36,438	\$82,821	\$25,857	\$29,369	14%

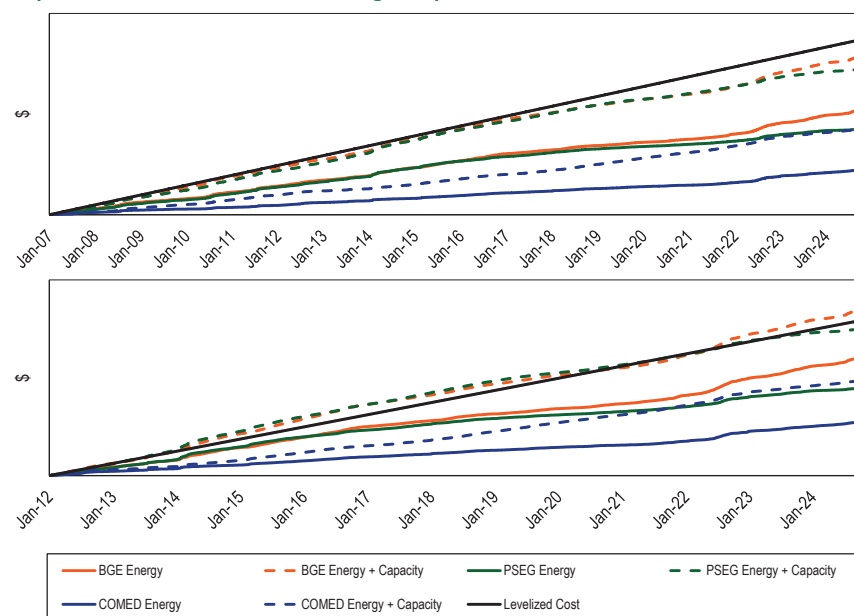
## Historical New Entrant CC Revenue Adequacy

Total unit net revenues include energy and capacity market revenues. Analysis of the total unit revenues of theoretical new entrant CCs for three representative locations shows that CC units that entered the PJM markets in 2007 have covered 90 percent of their total costs in the BGE Zone and 83 percent of total costs in the PSEG Zone, and 49 percent of total costs in the COMED Zone, including the return on and of capital, on a cumulative basis. The analysis also shows that theoretical new entrant CCs that entered the PJM markets in 2012 have covered over 100 percent of their total costs on a cumulative basis in the BGE Zone, 94 percent of their total costs in PSEG Zone, and 61 percent of total costs in the COMED Zone. Energy market revenues alone were not sufficient to cover total costs in any scenario, which demonstrates the critical role of the capacity market revenue in covering total costs. Covering 100 percent of total costs in this analysis includes earning the assumed rate of return. Units earned a positive rate of return even when covering less than 100 percent of the identified costs.

<sup>22</sup> Net revenues are calculated for zones in which there are sufficient operating units to determine capacity factor for a new entrant unit.

Figure 7-5 compares cumulative energy market net revenues and energy market net revenues plus capacity market revenues to cumulative leveled costs for a new entrant CC that began operation on January 1, 2007, and a new entrant CC that began operation on January 1, 2012. The solid black line shows the total net revenue required to cover total costs. The solid colored lines show net energy revenue by zone. The dashed colored lines show the sum of net energy and capacity revenue by zone.

**Figure 7-5 Historical new entrant CC revenue adequacy: 2007 through September 2024 and 2012 through September 2024<sup>23</sup>**



<sup>23</sup> The gas pipeline pricing points used in this analysis are Zone 6 non-NY for BGE, Chicago City Gate for COMED, and Texas Eastern M3 for PSEG.

Table 7-13 shows the percent of leveled total costs recovered from the start date through 2023. Table 7-13 also shows the return (IRR) earned from the start date through June 2024. For example, for a CC built in BGE in 2012, the resource would have earned a 14 percent IRR compared to the required 12 percent. In contrast, for a CC built in ComEd in 2012, the resource would have earned a 2 percent IRR compared to the required 12 percent.

**Table 7-13 Percent of leveled total costs recovered**

	2007 CC	2012 CC
Percent of leveled costs covered at 12% IRR		
BGE	90%	106%
COMED	49%	61%
PSEG	83%	94%
IRR at which leveled costs are covered		
BGE	9%	14%
COMED	0%	2%
PSEG	7%	11%

The assumptions used for this analysis are shown in Table 7-14.

**Table 7-14 Assumptions for analysis of new entry in 2007 and 2012**

	2007 CC	2012 CC
Project Cost	\$658,598,000	\$665,995,000
Fixed O&M (\$/MW-Year)	\$20,016	\$20,126
End of Life Value	\$0	\$0
Loan Term	20 years	20 years
Percent Equity (%)	50%	50%
Percent Debt (%)	50%	50%
Loan Interest Rate (%)	7%	7%
Cost of Equity (%)	12.0%	12.0%
Federal Income Tax Rate (%)	35%	35%
State Income Tax Rate (%)	9%	9%
General Escalation (%)	2.5%	2.5%
Technology	GE Frame 7FA.04	GE Frame 7FA.05
ICAP (MW)	601	655
Depreciation MACRS 150% declining balance	20 years	20 years
IRR (%)	12.0%	12.0%

## Nuclear Net Revenue Analysis

The analysis of nuclear plants includes annual avoidable costs and incremental capital expenditures from the Nuclear Energy Institute (NEI) based on NEI's calculations of average costs for all U.S. nuclear plants.<sup>24</sup> <sup>25</sup> The analysis includes the most recent operating cost data and incremental capital expenditure data for single unit plants and multi unit plants published by NEI, for 2022.<sup>26</sup> This is likely to result in conservatively high costs for the forward looking analysis. NEI average operating costs have decreased since their peak in 2012 (a 10.8 percent decrease from 2012 through 2022 for all plants including single and multiple unit plants).<sup>27</sup> NEI average incremental capital expenditures have decreased since their peak in 2012 (a 34.5 percent decrease from 2012 through 2022 for all plants including single and multiple unit plants).<sup>28</sup> NEI's incremental capital expenditures peaked in 2012 as a result of regulatory requirements following the 2011 accident at the Fukushima nuclear plant in Japan.

The results for nuclear plants are sensitive to small changes in PJM energy and capacity prices, both actual and forward prices.<sup>29</sup> When gas prices are high and LMPs are high as a result, net revenues to nuclear plants increase. In 2014, the polar vortex resulted in a significant increase in net revenues to nuclear plants. When gas prices are low and LMPs are low as a result, net revenues to nuclear plants decrease. In 2016, PJM energy prices were then at the lowest level since the introduction of competitive markets on April 1, 1999, and remained low in 2017. As a result, in 2016 and 2017, a significant

proportion of nuclear plants did not cover annual avoidable costs based on current year prices.<sup>30</sup> In 2018, high gas prices and high LMPs resulted in a significant increase in net revenues for nuclear plants in PJM. Energy prices in 2018 were significantly higher than in 2017. Although energy prices in 2019 were lower than in 2016, higher capacity market revenues more than offset the difference. In 2020, PJM energy prices were at the lowest level since the introduction of competitive markets, even lower than in 2016. Average energy prices in 2022 were higher than energy prices in any year since the inception of PJM markets in 1999. Based on forward prices as of September 30, 2024, expected nuclear plant energy revenues for 2025 and 2026 are higher than actual revenues in all years since 2014, with the exception of 2022. The actual net revenue results for individual nuclear plants are a function of the degree to which actual unit costs are less than or greater than the benchmark NEI data.

Table 7-15 shows energy market prices, Table 7-16 and Table 7-17 show capacity market prices and Table 7-18 shows nuclear cost data for the 16 nuclear plants in PJM in addition to Oyster Creek, which retired September 17, 2018, and Three Mile Island, which retired September 20, 2019.<sup>31</sup> The analysis excludes the Catawba 1 nuclear unit. Partial data is provided for the Cook, North Anna, and Surry nuclear units. The AEP Cook nuclear units are designated FRR. North Anna 1 and 2 and Surry 1 and 2 are part of the Dominion FRR for the 2022/2023 Delivery Year. FRR units receive cost of service revenues and are not subject to PJM market revenues.<sup>32</sup> Duke's Catawba 1 is not in PJM but is pseudo tied to PJM.

For nuclear plants, all calculations are based on publicly available data in order to avoid revealing confidential information. Historical nuclear unit revenue is based on day-ahead LMP at the relevant node. Nuclear unit capacity revenue assumes that the unit cleared its full unforced capacity at the BRA locational clearing price. Unforced capacity is determined using the annual class average EFORD rate.

<sup>24</sup> Operating costs from: Nuclear Energy Institute (December 2023). "Nuclear Costs in Context," <<https://www.nei.org/CorporateSite/media/filefolder/resources/reports-and-briefs/2023-Costs-in-Context.pdf>>. Individual plants may vary from the average due to factors such as geographic location, local labor costs, the timing of refueling outages and other unit specific factors. This is the most current NEI data available.

<sup>25</sup> The NEI costs for Hope Creek were treated as that of a two unit configuration because the unit is located in the same area as Salem 1 & 2. The net surplus of Hope Creek is sensitive to the accuracy of this assumption.

<sup>26</sup> NEI also provides average costs by plant run by operators with one plant or multiple plants, by market, and by type of nuclear reactor. Plants run by operators with multiple plants have lower average costs than plants run by operators with a single plant. Plants participating in wholesale markets have lower average costs than plants in regulated markets. PWR reactors have lower average generating costs than BWR reactors.

<sup>27</sup> Operating costs in this paragraph are operating costs as specified by NEI and do not include fuel costs or capital expenditures. Operating costs for single unit plants increased by \$1.31/MWh, or 5.3 percent, from 2021 to 2022 in nominal dollars, but decreased in real dollars (2022 dollars). Operating costs for multiple unit plants increased by \$0.51/MWh, or 3.1 percent, from 2021 to 2022 in nominal dollars, but decreased in real dollars (2022 dollars).

<sup>28</sup> Capital expenditures have decreased 28.9 percent since 2012 for single unit plants and 34.7 percent for multiple unit plants in nominal dollars.

<sup>29</sup> A change in the capacity market price of \$24 per MW-day translates into a change in capacity revenue of \$1.00 per MWh for a nuclear power plant operating at a capacity factor of 100 percent. A change in the capacity market price of \$24 per MW-day translates into a change in capacity revenue of \$1.04 per MWh for a nuclear power plant operating at a capacity factor of 0.957 percent.

<sup>30</sup> The MMU submitted testimony in New Jersey on the same issues of nuclear economics. *Establishing Nuclear Diversity Certificate Program*. Bill No. S-877 New Jersey Senate Environment and Energy Committee. (2018). *Revised Statement of Joseph Bowling*.

<sup>31</sup> Installed capacity is from NEI, "Map of U.S. Nuclear Plants," <<https://www.nei.org/resources/map-of-us-nuclear-plants>>.

<sup>32</sup> See "Resources Designated in 2022/2023 FRR Capacity Plans as of April 23, 2021," <<https://www.pjm.com/-/media/markets-ops/rpm/rpm-auction-info/2022-2023/2022-2023-resources-designated-in-frr-plans.ashx>>



Table 7-15 Nuclear unit day-ahead LMP: 2008 through 2023

	ICAP (MW)	Average DA LMP (\$/MWh)															
		2008	2009	2010	2011	2012	2013	2014	2015	2016	2017	2018	2019	2020	2021	2022	2023
Beaver Valley	1,808	\$49.46	\$31.51	\$35.59	\$37.43	\$30.34	\$34.24	\$41.86	\$30.35	\$27.07	\$29.11	\$36.35	\$26.22	\$20.33	\$37.07	\$67.02	\$29.63
Braidwood	2,337	\$48.10	\$27.76	\$31.48	\$32.02	\$27.51	\$30.26	\$37.34	\$25.97	\$24.30	\$24.99	\$27.11	\$22.88	\$18.23	\$33.74	\$58.20	\$25.78
Byron	2,300	\$47.61	\$23.98	\$28.49	\$28.09	\$24.25	\$29.22	\$35.05	\$21.00	\$17.94	\$23.79	\$26.96	\$22.19	\$17.66	\$32.81	\$57.70	\$25.36
Calvert Cliffs	1,726	\$78.63	\$41.05	\$51.27	\$46.53	\$35.19	\$40.27	\$57.88	\$40.30	\$32.64	\$31.57	\$38.79	\$28.00	\$21.88	\$41.24	\$78.11	\$35.45
Cook	2,177	\$52.26	\$32.20	\$36.52	\$37.41	\$30.09	\$34.14	\$40.49	\$29.94	\$26.93	\$28.03	\$31.44	\$25.07	\$19.59	\$34.81	\$63.46	\$28.88
Davis Besse	894	-	-	-	\$39.68	\$31.68	\$36.10	\$47.21	\$31.94	\$27.80	\$28.85	\$34.44	\$26.33	\$20.54	\$37.34	\$68.07	\$29.63
Dresden	1,797	\$48.76	\$28.27	\$32.73	\$33.07	\$28.42	\$31.82	\$39.22	\$27.45	\$25.89	\$26.35	\$28.25	\$23.41	\$18.73	\$34.32	\$59.35	\$25.11
Hope Creek	1,172	\$73.34	\$39.43	\$48.03	\$45.52	\$33.07	\$37.43	\$51.99	\$32.41	\$23.20	\$26.78	\$32.93	\$22.45	\$17.32	\$30.16	\$60.64	\$22.97
LaSalle	2,265	\$47.96	\$27.71	\$31.53	\$31.93	\$27.56	\$30.94	\$37.88	\$26.28	\$23.95	\$24.71	\$27.19	\$22.75	\$18.14	\$33.54	\$57.90	\$25.55
Limerick	2,242	\$73.49	\$39.49	\$48.23	\$45.27	\$33.09	\$37.28	\$51.71	\$32.65	\$23.37	\$26.99	\$33.08	\$22.68	\$17.31	\$31.05	\$61.25	\$23.16
North Anna	1,892	\$75.14	\$39.89	\$50.59	\$45.47	\$33.87	\$38.55	\$53.37	\$38.05	\$30.50	\$31.27	\$38.44	\$27.39	\$21.06	\$39.99	\$76.51	\$33.75
Oyster Creek	608	\$75.49	\$40.43	\$49.29	\$46.74	\$33.69	\$38.62	\$52.85	\$33.10	\$23.79	\$27.52	NA	NA	NA	NA	NA	NA
Peach Bottom	2,550	\$73.09	\$39.32	\$47.70	\$44.73	\$32.81	\$37.37	\$51.52	\$31.98	\$23.07	\$26.76	\$32.63	\$21.58	\$16.93	\$30.77	\$61.29	\$23.01
Perry	1,240	-	-	\$36.99	\$38.76	\$31.68	\$36.69	\$46.14	\$32.77	\$27.84	\$29.91	\$37.24	\$26.76	\$20.49	\$37.76	\$68.56	\$30.39
Quad Cities	1,819	\$47.28	\$24.81	\$27.53	\$26.79	\$20.43	\$25.94	\$30.71	\$19.47	\$18.04	\$23.09	\$25.54	\$21.13	\$15.95	\$31.39	\$57.82	\$25.01
Salem	2,285	\$73.41	\$39.51	\$48.02	\$45.50	\$33.06	\$37.40	\$51.96	\$32.37	\$23.18	\$26.76	\$32.90	\$22.43	\$17.32	\$30.12	\$60.59	\$22.95
Surry	1,676	\$71.96	\$39.02	\$49.30	\$45.01	\$33.62	\$37.98	\$51.75	\$37.91	\$30.08	\$31.08	\$38.50	\$26.65	\$20.41	\$39.30	\$74.21	\$32.74
Susquehanna	2,494	\$69.96	\$38.24	\$45.95	\$44.78	\$32.10	\$36.76	\$50.93	\$32.47	\$23.66	\$27.14	\$32.42	\$21.08	\$16.03	\$30.36	\$59.60	\$23.77
Three Mile Island	803	\$72.46	\$39.11	\$46.72	\$44.15	\$32.43	\$36.83	\$50.47	\$30.94	\$22.96	\$27.12	\$31.76	NA	NA	NA	NA	NA

Table 7-16 BRA capacity market clearing prices (\$/MW-Day): 2007/2008 through 2025/2026<sup>33 34</sup>

	ICAP (MW)	BRA Capacity Price (\$/MW-Day)																		
		07/08	08/09	09/10	10/11	11/12	12/13	13/14	14/15	15/16	16/17	17/18	18/19	19/20	20/21	21/22	22/23	23/24	24/25	25/26
Beaver Valley	1,808	\$41	\$112	\$102	\$174	\$110	\$16	\$28	\$126	\$136	\$59	\$120	\$165	\$100	\$77	\$140	\$50	\$34	\$29	\$270
Braidwood	2,337	\$41	\$112	\$102	\$174	\$110	\$16	\$28	\$126	\$136	\$59	\$120	\$215	\$203	\$188	\$196	\$69	\$34	\$29	\$270
Byron	2,300	\$41	\$112	\$102	\$174	\$110	\$16	\$28	\$126	\$136	\$59	\$120	\$215	\$203	\$188	\$196	\$69	\$34	\$29	\$270
Calvert Cliffs	1,726	\$189	\$210	\$237	\$174	\$110	\$133	\$226	\$137	\$167	\$119	\$120	\$165	\$100	\$86	\$140	\$96	\$49	\$49	\$270
Cook	2,177	NA	NA	NA	NA	NA	NA	NA	NA	NA	NA	NA	NA	NA	NA	NA	NA	NA	NA	NA
Davis Besse	894	-	-	-	-	\$109	\$20	\$28	\$126	\$357	\$114	\$120	\$165	\$100	\$77	\$171	\$50	\$34	\$29	\$270
Dresden	1,797	\$41	\$112	\$102	\$174	\$110	\$16	\$28	\$126	\$136	\$59	\$120	\$215	\$203	\$188	\$196	\$69	\$34	\$29	\$270
Hope Creek	1,172	\$198	\$149	\$191	\$174	\$110	\$140	\$245	\$137	\$167	\$119	\$120	\$225	\$120	\$188	\$166	\$98	\$49	\$54	\$270
LaSalle	2,265	\$41	\$112	\$102	\$174	\$110	\$16	\$28	\$126	\$136	\$59	\$120	\$215	\$203	\$188	\$196	\$69	\$34	\$29	\$270
Limerick	2,242	\$198	\$149	\$191	\$174	\$110	\$140	\$245	\$137	\$167	\$119	\$120	\$225	\$120	\$188	\$166	\$98	\$49	\$54	\$270
North Anna	1,892	\$41	\$112	\$102	\$174	\$110	\$16	\$28	\$126	\$136	\$59	\$120	\$165	\$100	\$77	\$140	NA	NA	NA	\$444
Oyster Creek	608	\$198	\$149	\$191	\$174	\$110	\$140	\$245	\$137	\$167	\$119	\$120	\$225	\$120	\$188	-	-	-	-	-
Peach Bottom	2,550	\$198	\$149	\$191	\$174	\$110	\$140	\$245	\$137	\$167	\$119	\$120	\$225	\$120	\$188	\$166	\$98	\$49	\$54	\$270
Perry	1,240	-	-	-	-	\$109	\$20	\$28	\$126	\$357	\$114	\$120	\$165	\$100	\$77	\$171	\$50	\$34	\$29	\$270
Quad Cities	1,819	\$41	\$112	\$102	\$174	\$110	\$16	\$28	\$126	\$136	\$59	\$120	\$215	\$203	\$188	\$196	\$69	\$34	\$29	\$270
Salem	2,285	\$198	\$149	\$191	\$174	\$110	\$140	\$245	\$137	\$167	\$119	\$120	\$225	\$120	\$188	\$166	\$98	\$49	\$54	\$270
Surry	1,676	\$41	\$112	\$102	\$174	\$110	\$16	\$28	\$126	\$136	\$59	\$120	\$165	\$100	\$77	\$140	NA	NA	NA	\$444
Susquehanna	2,494	\$41	\$112	\$191	\$174	\$110	\$133	\$226	\$137	\$167	\$119	\$120	\$165	\$100	\$86	\$140	\$96	\$49	\$49	\$270
Three Mile Island	803	\$41	\$112	\$191	\$174	\$110	\$133	\$226	\$137	\$167	\$119	\$120	\$165	\$100	\$86	\$140	-	-	-	-

<sup>33</sup> Oyster Creek retired September 17, 2018. Exelon. "Oyster Creek Generating Station Retires from Service," (September 17, 2018) <<http://www.exeloncorp.com/newsroom/oyster-creek-retires>>. Three Mile Island retired September 20, 2019. Exelon. "Three Mile Island Generating Station Unit 1 Retires from Service After 45 Years," (September 20, 2019) <<https://www.exeloncorp.com/newsroom/three-mile-island-generating-station-unit-1-retires>>. For the 2022/2023 Delivery Year, Surry is part of Dominion FRR.

<sup>34</sup> Cook is designated FRR. North Anna and Surry are in Dominion FRR beginning with the 2022/2023 Delivery Year. North Anna and Surry are in the PJM Capacity Market beginning with the 2025/2026 Delivery Year.

Table 7-17 Nuclear unit capacity market revenue (\$/MWh): 2008 through 2025<sup>35 36</sup>

	ICAP (MW)	Capacity Revenue (\$/MWh)																	
		2008	2009	2010	2011	2012	2013	2014	2015	2016	2017	2018	2019	2020	2021	2022	2023	2024	2025
Beaver Valley	1,808	\$3.57	\$4.50	\$6.23	\$5.87	\$2.41	\$1.01	\$3.70	\$5.75	\$3.96	\$4.17	\$6.42	\$5.61	\$3.81	\$4.93	\$3.80	\$1.76	\$1.34	\$7.33
Braidwood	2,337	\$3.57	\$4.50	\$6.23	\$5.87	\$2.41	\$1.01	\$3.70	\$5.75	\$3.96	\$4.17	\$7.71	\$9.20	\$8.58	\$8.35	\$5.28	\$2.10	\$1.34	\$7.33
Byron	2,300	\$3.57	\$4.50	\$6.23	\$5.87	\$2.41	\$1.01	\$3.70	\$5.75	\$3.96	\$4.17	\$7.71	\$9.20	\$8.58	\$8.35	\$5.28	\$2.10	\$1.34	\$7.33
Calvert Cliffs	1,726	\$8.73	\$9.59	\$8.64	\$5.87	\$5.38	\$8.21	\$7.53	\$6.74	\$6.04	\$5.26	\$6.42	\$5.62	\$4.07	\$5.10	\$4.97	\$2.97	\$2.14	\$7.70
Cook	2,177	NA	NA	NA	NA	NA	NA	NA	NA	NA	NA	NA	NA	NA	NA	NA	NA	NA	NA
Davis Besse	894	NA	NA	NA	NA	\$2.49	\$1.08	\$3.70	\$11.40	\$9.33	\$5.17	\$6.42	\$5.61	\$3.81	\$5.73	\$4.36	\$1.76	\$1.34	\$7.33
Dresden	1,797	\$3.57	\$4.50	\$6.23	\$5.87	\$2.41	\$1.01	\$3.70	\$5.75	\$3.96	\$4.17	\$7.71	\$9.20	\$8.58	\$8.35	\$5.28	\$2.10	\$1.34	\$7.33
Hope Creek	1,172	\$7.33	\$7.37	\$7.82	\$5.87	\$5.54	\$8.81	\$7.87	\$6.74	\$6.04	\$5.26	\$7.98	\$7.24	\$7.05	\$7.59	\$5.48	\$3.00	\$2.24	\$7.77
LaSalle	2,265	\$3.57	\$4.50	\$6.23	\$5.87	\$2.41	\$1.01	\$3.70	\$5.75	\$3.96	\$4.17	\$7.71	\$9.20	\$8.58	\$8.35	\$5.28	\$2.10	\$1.34	\$7.33
Limerick	2,242	\$7.33	\$7.37	\$7.82	\$5.87	\$5.54	\$8.81	\$7.87	\$6.74	\$6.04	\$5.26	\$7.98	\$7.24	\$7.05	\$7.59	\$5.48	\$3.00	\$2.24	\$7.77
North Anna	1,892	\$3.57	\$4.50	\$6.23	\$5.87	\$2.41	\$1.01	\$3.70	\$5.75	\$3.96	\$4.17	\$6.42	\$5.61	\$3.81	\$4.93	NA	NA	NA	\$11.22
Oyster Creek	608	\$7.33	\$7.37	\$7.82	\$5.87	\$5.54	\$8.81	\$7.87	\$6.74	\$6.04	\$5.26	-	-	-	-	-	-	-	-
Peach Bottom	2,550	\$7.33	\$7.37	\$7.82	\$5.87	\$5.54	\$8.81	\$7.87	\$6.74	\$6.04	\$5.26	\$7.98	\$7.24	\$7.05	\$7.59	\$5.48	\$3.00	\$2.24	\$7.77
Perry	1,240	NA	NA	NA	NA	\$2.49	\$1.08	\$3.70	\$11.40	\$9.33	\$5.17	\$6.42	\$5.61	\$3.81	\$5.73	\$4.36	\$1.76	\$1.34	\$7.33
Quad Cities	1,819	\$3.57	\$4.50	\$6.23	\$5.87	\$2.41	\$1.01	\$3.70	\$5.75	\$3.96	\$4.17	\$7.71	\$9.20	\$8.58	\$8.35	\$5.28	\$2.10	\$1.34	\$7.33
Salem	2,285	\$7.33	\$7.37	\$7.82	\$5.87	\$5.54	\$8.81	\$7.87	\$6.74	\$6.04	\$5.26	\$7.98	\$7.24	\$7.05	\$7.59	\$5.48	\$3.00	\$2.24	\$7.77
Surry	1,676	\$3.57	\$4.50	\$6.23	\$5.87	\$2.41	\$1.01	\$3.70	\$5.75	\$3.96	\$4.17	\$6.42	\$5.61	\$3.81	\$4.93	NA	NA	NA	\$11.22
Susquehanna	2,494	\$3.57	\$6.72	\$7.82	\$5.87	\$5.38	\$8.21	\$7.53	\$6.74	\$6.04	\$5.26	\$6.42	\$5.61	\$4.06	\$5.10	\$4.97	\$2.97	\$2.14	\$7.70
Three Mile Island	803	\$3.57	\$6.72	\$7.82	\$5.87	\$5.38	\$8.21	\$7.53	\$6.74	\$6.04	\$5.26	\$6.42	-	-	-	-	-	-	-

<sup>35</sup> Capacity revenue calculated by adjusting the BRA Capacity Price for calendar year, by the class average EFORD, and by the annual class average capacity factor. Class average EFORD and capacity factor is from *2023 Annual State of the Market Report for PJM*, Volume 2, Section 5: Capacity Market.

<sup>36</sup> Oyster Creek retired September 17, 2018. Exelon. "Oyster Creek Generating Station Retires from Service," (September 17, 2018) <<http://www.exeloncorp.com/newsroom/oyster-creek-retires>>. Three Mile Island retired September 20, 2019. Exelon. "Three Mile Island Generating Station Unit 1 Retires from Service After 45 Years," (September 20, 2019) <<https://www.exeloncorp.com/newsroom/three-mile-island-generating-station-unit-1-retires>>.

Table 7-18 Nuclear unit costs: 2008 through 2022<sup>37 38</sup>

	ICAP (MW)	NEI Costs (\$/MWh)														
		2008	2009	2010	2011	2012	2013	2014	2015	2016	2017	2018	2019	2020	2021	2022
Beaver Valley	1,808	\$26.73	\$29.76	\$31.34	\$34.51	\$36.06	\$33.84	\$33.84	\$32.90	\$31.63	\$30.89	\$29.07	\$28.38	\$27.03	\$27.18	\$28.63
Braidwood	2,337	\$26.73	\$29.76	\$31.34	\$34.51	\$36.06	\$33.84	\$33.84	\$32.90	\$31.63	\$30.89	\$29.07	\$28.38	\$27.03	\$27.18	\$28.63
Byron	2,300	\$26.73	\$29.76	\$31.34	\$34.51	\$36.06	\$33.84	\$33.84	\$32.90	\$31.63	\$30.89	\$29.07	\$28.38	\$27.03	\$27.18	\$28.63
Calvert Cliffs	1,726	\$26.73	\$29.76	\$31.34	\$34.51	\$36.06	\$33.84	\$33.84	\$32.90	\$31.63	\$30.89	\$29.07	\$28.38	\$27.03	\$27.18	\$28.63
Cook	2,177	\$26.73	\$29.76	\$31.34	\$34.51	\$36.06	\$33.84	\$33.84	\$32.90	\$31.63	\$30.89	\$29.07	\$28.38	\$27.03	\$27.18	\$28.63
Davis Besse	894	\$35.31	\$39.36	\$41.23	\$45.45	\$47.41	\$44.16	\$44.32	\$44.51	\$41.39	\$42.66	\$42.00	\$38.40	\$39.64	\$37.42	\$41.08
Dresden	1,797	\$26.73	\$29.76	\$31.34	\$34.51	\$36.06	\$33.84	\$33.84	\$32.90	\$31.63	\$30.89	\$29.07	\$28.38	\$27.03	\$27.18	\$28.63
Hope Creek	1,172	\$26.73	\$29.76	\$31.34	\$34.51	\$36.06	\$33.84	\$33.84	\$32.90	\$31.63	\$30.89	\$29.07	\$28.38	\$27.03	\$27.18	\$28.63
LaSalle	2,265	\$26.73	\$29.76	\$31.34	\$34.51	\$36.06	\$33.84	\$33.84	\$32.90	\$31.63	\$30.89	\$29.07	\$28.38	\$27.03	\$27.18	\$28.63
Limerick	2,242	\$26.73	\$29.76	\$31.34	\$34.51	\$36.06	\$33.84	\$33.84	\$32.90	\$31.63	\$30.89	\$29.07	\$28.38	\$27.03	\$27.18	\$28.63
North Anna	1,892	\$26.73	\$29.76	\$31.34	\$34.51	\$36.06	\$33.84	\$33.84	\$32.90	\$31.63	\$30.89	\$29.07	\$28.38	\$27.03	\$27.18	\$28.63
Oyster Creek	608	\$35.31	\$39.36	\$41.23	\$45.45	\$47.41	\$44.16	\$44.32	\$44.51	\$41.39	\$42.66	-	-	-	-	-
Peach Bottom	2,550	\$26.73	\$29.76	\$31.34	\$34.51	\$36.06	\$33.84	\$33.84	\$32.90	\$31.63	\$30.89	\$29.07	\$28.38	\$27.03	\$27.18	\$28.63
Perry	1,240	\$35.31	\$39.36	\$41.23	\$45.45	\$47.41	\$44.16	\$44.32	\$44.51	\$41.39	\$42.66	\$42.00	\$38.40	\$39.64	\$37.42	\$41.08
Quad Cities	1,819	\$26.73	\$29.76	\$31.34	\$34.51	\$36.06	\$33.84	\$33.84	\$32.90	\$31.63	\$30.89	\$29.07	\$28.38	\$27.03	\$27.18	\$28.63
Salem	2,285	\$26.73	\$29.76	\$31.34	\$34.51	\$36.06	\$33.84	\$33.84	\$32.90	\$31.63	\$30.89	\$29.07	\$28.38	\$27.03	\$27.18	\$28.63
Surry	1,676	\$26.73	\$29.76	\$31.34	\$34.51	\$36.06	\$33.84	\$33.84	\$32.90	\$31.63	\$30.89	\$29.07	\$28.38	\$27.03	\$27.18	\$28.63
Susquehanna	2,494	\$26.73	\$29.76	\$31.34	\$34.51	\$36.06	\$33.84	\$33.84	\$32.90	\$31.63	\$30.89	\$29.07	\$28.38	\$27.03	\$27.18	\$28.63
Three Mile Island	803	\$35.31	\$39.36	\$41.23	\$45.45	\$47.41	\$44.16	\$44.32	\$44.51	\$41.39	\$42.66	\$42.00	-	-	-	-

Table 7-19 shows the surplus or shortfall in \$/MWh for the 16 nuclear plants in PJM, and Oyster Creek and Three Mile Island, calculated using historic LMP and cost data. In 2020, no nuclear plants covered their fuel costs, operating costs, and incremental capital expenditures as a result of lower energy prices. In 2021 and 2022, all nuclear plants more than covered their fuel costs, operating costs, and capital expenditures as a result of higher energy prices. In 2023, only two nuclear plants covered their fuel costs, operating costs, and incremental capital expenditures as a result of lower energy and capacity prices. The surplus or shortfall assumes that the unit receives the DA LMP, reactive capability revenue, cleared its full unforced capacity at the BRA locational clearing price, and has costs equal to the NEI average costs.<sup>39</sup> Unforced capacity is determined using the annual class average EFORD rate.

The market revenues are based in part on the sale of capacity. Some nuclear plants did not clear the capacity market in some years as a result of decisions by plant owners about how to offer the plants in the capacity market auctions. When nuclear plants do not clear in the capacity market, it is a result of the offer behavior of the plants and does not accurately reflect the economic viability of the plants. This analysis is intended to define whether the plants are receiving a retirement signal from the PJM markets. If the plants are viable including both energy and capacity market revenues based on actual clearing prices, then the PJM markets indicate that the plant is economically viable. If plant owners decide to offer so as to not clear in the capacity market, that does not change the market signals to the plants. Such decisions may reflect a variety of considerations. Quad Cities and a portion of Byron's capacity did not clear in the 2019/2020

<sup>37</sup> Operating costs from: Nuclear Energy Institute (December, 2023). "Nuclear Costs in Context," <<https://www.nei.org/CorporateSite/media/filefolder/resources/reports-and-briefs/2023-Costs-in-Context.pdf>>.

<sup>38</sup> Oyster Creek retired on September 17, 2018. Exelon. "Oyster Creek Generating Station Retires from Service," (September 17, 2018) <<http://www.exeloncorp.com/newsroom/oyster-creek-retires>>. Three Mile Island retired September 20, 2019. Exelon. "Three Mile Island Generating Station Unit 1 Retires from Service After 45 Years," (September 20, 2019) <<https://www.exeloncorp.com/newsroom/three-mile-island-generating-station-unit-1-retires>>.

<sup>39</sup> Installed capacity is from NEI. "Maps of U.S. Nuclear Plants," <<https://www.nei.org/resources/map-of-us-nuclear-plants>>.

Auction.<sup>40</sup> Quad Cities did not clear in the 2020/2021 Auction.<sup>41</sup> Dresden and most of Byron did not clear in the 2021/2022 Auction.<sup>42</sup> Beaver Valley, Davis Besse, and Perry did not clear in the 2021/2022 Auction.<sup>43</sup> Byron, Dresden, and Quad Cities did not clear in the 2022/2023 Auction.<sup>44</sup>

Nuclear unit revenue is a combination of energy market revenue, ancillary market revenue and capacity market revenue. Negative energy market prices do not have a significant impact on nuclear unit revenue. Since 2014, negative energy market prices have affected nuclear plants' annual total revenues by an average of 0.1 percent. Negative LMPs reduced nuclear plant total revenues by an average of 0.0 percent and a maximum of 0.6 percent in 2014, an average of 0.2 percent and a maximum of 1.2 percent in 2015, an average of 0.1 percent and a maximum of 0.7 percent in 2016, an average of 0.0 percent and a maximum of 0.6 percent in 2017, an average of 0.0 percent and a maximum of 0.0 percent in 2018, an average of 0.0 percent and a maximum of 0.2 percent in 2019, an average of 0.1 percent and a maximum of 1.7 percent in 2020, an average of 0.0 percent and a maximum of 0.3 percent in 2021, an average of 0.0 percent and a maximum of 0.0 percent in 2022, an average of 0.0 percent and a maximum of 0.1 percent in 2023, and an average of 0.7 percent and a maximum of 6.3 percent in the first nine months of 2024.<sup>45</sup>

In 2023, only two nuclear plants covered their fuel costs, operating costs, and incremental capital expenditures as a result of lower energy and capacity prices.

Table 7-19 shows the surplus or shortfall for the 16 nuclear plants in PJM in \$/MWh.

**Table 7-19 Nuclear unit surplus (shortfall) based on public data in \$/MWh: 2008 through 2023**

	ICAP (MW)	Surplus (Shortfall) (\$/MWh)															
		2008	2009	2010	2011	2012	2013	2014	2015	2016	2017	2018	2019	2020	2021	2022	2023
Beaver Valley	1,808	\$26.3	\$6.3	\$10.5	\$8.8	(\$3.3)	\$1.4	\$11.7	\$3.2	(\$0.4)	\$2.6	\$13.9	\$3.7	(\$2.7)	\$15.0	\$42.4	\$3.0
Braidwood	2,337	\$24.9	\$2.5	\$6.4	\$3.4	(\$6.1)	(\$2.6)	\$7.2	(\$1.2)	(\$3.2)	(\$1.6)	\$5.9	\$3.9	(\$0.0)	\$15.1	\$35.0	(\$0.6)
Byron	2,300	\$24.5	(\$1.3)	\$3.4	(\$0.6)	(\$9.4)	(\$3.6)	\$4.9	(\$6.1)	(\$9.6)	(\$2.8)	\$5.8	\$3.2	(\$0.6)	\$14.1	\$34.5	(\$1.0)
Calvert Cliffs	1,726	\$60.6	\$20.9	\$28.6	\$17.9	\$4.5	\$14.6	\$31.6	\$14.1	\$7.2	\$6.1	\$16.3	\$5.4	(\$0.9)	\$19.4	\$54.6	\$10.0
Cook	2,177	NA	NA	NA	NA	NA	NA	NA	NA	NA	NA	NA	NA	NA	NA	NA	NA
Davis Besse	894	NA	NA	NA	NA	(\$13.2)	(\$7.0)	\$6.6	(\$1.2)	(\$4.0)	(\$8.4)	(\$0.9)	(\$6.3)	(\$15.1)	\$5.9	\$31.6	(\$9.5)
Dresden	1,797	\$25.6	\$3.0	\$7.6	\$4.4	(\$5.2)	(\$1.0)	\$9.1	\$0.3	(\$1.6)	(\$0.1)	\$7.1	\$4.5	\$0.5	\$15.7	\$36.2	(\$1.2)
Hope Creek	1,172	\$54.0	\$17.0	\$24.5	\$16.9	\$2.6	\$12.4	\$26.0	\$6.3	(\$1.9)	\$1.6	\$12.3	\$1.8	(\$2.2)	\$11.0	\$38.0	(\$2.2)
LaSalle	2,265	\$24.8	\$2.5	\$6.4	\$3.3	(\$6.1)	(\$1.9)	\$7.7	(\$0.9)	(\$3.6)	(\$1.9)	\$6.0	\$3.7	(\$0.2)	\$14.8	\$34.7	(\$0.9)
Limerick	2,242	\$54.1	\$17.1	\$24.7	\$16.6	\$2.6	\$12.2	\$25.7	\$6.5	(\$2.1)	\$1.5	\$12.1	\$1.6	(\$2.6)	\$11.6	\$38.2	(\$2.4)
North Anna	1,892	\$52.0	\$14.6	\$25.5	\$16.8	\$0.2	\$5.7	\$23.2	\$10.9	\$3.0	\$4.7	\$16.0	\$4.8	(\$2.0)	\$17.9	NA	NA
Oyster Creek	608	\$47.5	\$8.4	\$15.9	\$7.2	(\$8.2)	\$3.3	\$16.4	(\$4.7)	(\$11.6)	(\$9.9)	NA	NA	NA	NA	NA	NA
Peach Bottom	2,550	\$53.7	\$16.9	\$24.2	\$16.1	\$2.3	\$12.3	\$25.5	\$5.8	(\$2.2)	\$1.4	\$11.8	\$0.7	(\$2.7)	\$11.5	\$38.4	(\$2.3)
Perry	1,240	NA	NA	NA	NA	(\$13.2)	(\$6.4)	\$5.5	(\$0.3)	(\$4.0)	(\$7.4)	\$1.9	(\$5.8)	(\$15.1)	\$6.3	\$32.1	(\$8.7)
Quad Cities	1,819	\$24.1	(\$0.4)	\$2.4	(\$1.8)	(\$13.2)	(\$6.9)	\$0.6	(\$7.7)	(\$9.5)	(\$3.5)	\$4.3	\$2.1	(\$2.4)	\$12.7	\$34.6	(\$1.4)
Salem	2,285	\$54.0	\$17.1	\$24.5	\$16.9	\$2.6	\$12.4	\$26.0	\$6.2	(\$2.1)	\$1.5	\$12.1	\$1.6	(\$2.3)	\$10.9	\$37.8	(\$2.3)
Surry	1,676	\$48.8	\$13.8	\$24.2	\$16.4	(\$0.0)	\$5.1	\$21.6	\$10.8	\$2.6	\$4.5	\$16.0	\$4.0	(\$2.6)	\$17.2	NA	NA
Susquehanna	2,494	\$46.8	\$15.2	\$22.4	\$16.1	\$1.4	\$11.1	\$24.6	\$6.3	(\$1.6)	\$1.8	\$10.1	(\$1.4)	(\$6.6)	\$8.6	\$36.3	(\$1.6)
Three Mile Island	803	\$40.7	\$6.5	\$13.3	\$4.6	(\$9.6)	\$0.9	\$13.7	(\$6.8)	(\$12.4)	(\$10.3)	(\$3.8)	NA	NA	NA	NA	NA

40 Exelon, "Exelon Announces Outcome of 2019-2020 PJM Capacity Auction," (May 25, 2016) <<http://www.exeloncorp.com/newsroom/pjm-auction-results-2016>>.

41 Exelon, "Exelon Announces Outcome of 2020-2021 PJM Capacity Auction," (May 24, 2017) <<http://www.exeloncorp.com/newsroom/pjm-auction-results-release-2017>>.

42 Exelon, "Exelon Announces Outcome of 2021-2022 PJM Capacity Auction," (May 24, 2018) <<http://www.exeloncorp.com/newsroom/exelon-announces-outcome-of-2021-2022-pjm-capacity-auction>>.

43 PRNewswire, "FirstEnergy Solutions Comments on Results of PJM Capacity Auction," (May 24, 2018) <<https://www.prnewswire.com/news-releases/firstenergy-solutions-comments-on-results-of-pjm-capacity-auction-300654549.html>>.

44 NuclearNewswire, "Byron, Dresden, Quad Cities Fail to Clear in PJM Capacity Auction," (June 8, 2021) <<https://www.ans.org/news/article-2967/byron-dresden-quad-cities-fail-to-clear-in-pjm-capacity-auction/>>.

45 Analysis is based on actual unit generation and received energy market and capacity market revenues. Negative prices in the DA and RT market were set to zero for comparison. Results round to 0.0 percent.

Table 7-20 shows the surplus or shortfall for the 16 nuclear plants in PJM in dollars.

**Table 7-20 Nuclear unit surplus (shortfall) based on public data (\$M): 2008 through 2023**

	ICAP (MW)	Surplus (Shortfall) (\$ in millions)															
		2008	2009	2010	2011	2012	2013	2014	2015	2016	2017	2018	2019	2020	2021	2022	2023
Beaver Valley	1,808	\$393.5	\$93.3	\$156.3	\$131.1	(\$49.4)	\$21.0	\$174.8	\$47.7	(\$8.9)	\$35.7	\$204.3	\$51.0	(\$42.5)	\$223.0	\$632.2	\$41.8
Braidwood	2,337	\$482.3	\$48.3	\$122.8	\$65.2	(\$118.7)	(\$49.6)	\$138.9	(\$22.7)	(\$65.2)	(\$33.3)	\$110.8	\$70.7	(\$4.2)	\$290.0	\$674.9	(\$14.8)
Byron	2,300	\$465.5	(\$24.2)	\$64.1	(\$10.5)	(\$178.9)	(\$68.6)	\$93.2	(\$116.7)	(\$185.2)	(\$55.5)	\$106.4	\$56.6	(\$14.8)	\$267.5	\$654.7	(\$22.7)
Calvert Cliffs	1,726	\$865.9	\$297.3	\$406.9	\$254.8	\$64.5	\$208.4	\$449.6	\$201.4	\$100.7	\$84.7	\$229.8	\$74.0	(\$15.3)	\$275.3	\$778.7	\$141.6
Cook	2,177	NA	NA	NA	NA	NA	NA	NA	NA	NA	NA	NA	NA	NA	NA	NA	NA
Davis Besse	894	NA	NA	NA	NA	(\$98.0)	(\$51.4)	\$48.6	(\$8.6)	(\$31.5)	(\$63.7)	(\$8.4)	(\$47.2)	(\$111.5)	\$42.1	\$232.3	(\$72.6)
Dresden	1,797	\$380.7	\$44.6	\$112.9	\$65.7	(\$77.7)	(\$15.0)	\$134.6	\$4.4	(\$26.5)	(\$5.5)	\$102.2	\$62.2	\$4.1	\$231.7	\$536.2	(\$21.4)
Hope Creek	1,172	\$523.2	\$164.8	\$237.0	\$163.2	\$24.8	\$119.9	\$251.6	\$60.5	(\$23.2)	\$11.2	\$114.5	\$12.5	(\$25.4)	\$103.0	\$364.2	(\$26.1)
LaSalle	2,265	\$464.9	\$45.9	\$119.9	\$61.5	(\$114.1)	(\$35.3)	\$144.7	(\$16.3)	(\$69.8)	(\$37.5)	\$109.0	\$66.1	(\$5.6)	\$277.3	\$648.5	(\$18.7)
Limerick	2,242	\$1,003.7	\$316.3	\$457.2	\$307.6	\$47.8	\$226.5	\$476.3	\$120.1	(\$41.1)	\$25.3	\$221.7	\$28.2	(\$48.7)	\$213.8	\$707.9	(\$46.4)
North Anna	1,892	\$813.9	\$228.5	\$397.7	\$262.7	\$3.5	\$89.3	\$362.6	\$170.2	\$44.3	\$71.2	\$246.5	\$71.4	(\$33.3)	\$279.3	NA	NA
Oyster Creek	608	\$239.0	\$42.4	\$79.7	\$35.9	(\$41.1)	\$16.4	\$82.3	(\$23.4)	(\$58.2)	(\$49.6)	NA	NA	NA	NA	NA	NA
Peach Bottom	2,550	\$1,133.0	\$356.3	\$508.8	\$338.5	\$48.4	\$259.6	\$537.6	\$122.6	(\$53.0)	\$23.7	\$242.9	\$9.1	(\$63.3)	\$237.2	\$805.9	(\$56.0)
Perry	1,240	NA	NA	NA	NA	(\$135.8)	(\$65.3)	\$56.6	(\$3.5)	(\$43.2)	(\$77.5)	\$16.9	(\$61.1)	(\$155.2)	\$62.6	\$327.2	(\$92.8)
Quad Cities	1,819	\$363.1	(\$6.7)	\$36.3	(\$27.7)	(\$199.0)	(\$103.5)	\$8.6	(\$115.3)	(\$145.0)	(\$54.5)	\$62.7	\$29.0	(\$37.1)	\$190.1	\$519.7	(\$23.2)
Salem	2,285	\$1,021.3	\$322.8	\$461.9	\$317.9	\$48.2	\$233.1	\$490.0	\$117.1	(\$45.5)	\$21.3	\$222.5	\$24.0	(\$49.6)	\$200.2	\$708.9	(\$51.3)
Surry	1,676	\$676.9	\$190.3	\$334.4	\$226.4	(\$0.4)	\$71.2	\$298.9	\$148.8	\$33.5	\$60.4	\$219.1	\$53.2	(\$38.4)	\$237.8	NA	NA
Susquehanna	2,494	\$965.9	\$312.8	\$461.6	\$332.2	\$29.4	\$229.0	\$506.6	\$129.9	(\$39.7)	\$31.2	\$201.0	(\$34.4)	(\$141.3)	\$172.0	\$742.6	(\$39.6)
Three Mile Island	803	\$270.5	\$42.9	\$88.2	\$30.2	(\$63.7)	\$5.9	\$90.7	(\$45.2)	(\$82.3)	(\$68.1)	(\$25.3)	NA	NA	NA	NA	NA

In order to evaluate the expected viability of nuclear plants, analysis was performed based on known energy market prices for January through September 2024, forward energy market prices for October through December 2024, 2025, and 2026 and known capacity market prices for 2024 and 2025. The purpose of the forward analysis is to evaluate whether current forward prices are consistent with nuclear plants covering their annual avoidable costs over the next three years. While the forward capacity market prices are known through the 2025/2026 Delivery Year, actual energy prices will vary from forward values. Nuclear plants may choose to sell their output at a range of forward prices and for a range of future years.

Table 7-21 shows PJM energy prices (LMP), annual fuel, and operating and capital expenditures used for the analysis of the period 2024 through 2026. Capacity revenues are not presented for calendar year 2026 because the 2026/2027 BRA has not yet been run. The LMPs are based on forward prices with a basis adjustment for the specific plant locations.<sup>46</sup> Forward prices are as of September 30, 2024. The capacity prices are known through 2025 based on PJM capacity auction results.

<sup>46</sup> Forward prices on September 30, 2024. Forward prices are reported for PJM trading hubs which are adjusted to reflect the historical differences between prices at the trading hub and prices at the relevant plant locations. The basis adjustment is based on 2023 data.

**Table 7-21 Forward prices in PJM energy markets, capacity revenue, and annual costs**

	ICAP (MW)	Average Forward LMP (\$/MWh)			Ancillary Revenue (\$/MWh)	Capacity Revenue (\$/MWh)		2022 NEI Costs (\$/MWh)		
		2024	2025	2026	Reactive	2024	2025	Fuel	Operating	Capital
Beaver Valley	1,808	\$31.54	\$43.38	\$45.83	\$0.21	\$1.34	\$7.33	\$5.36	\$17.01	\$6.26
Braidwood	2,337	\$25.41	\$38.07	\$40.38	\$0.17	\$1.34	\$7.33	\$5.36	\$17.01	\$6.26
Byron	2,300	\$25.95	\$37.30	\$39.54	\$0.15	\$1.34	\$7.33	\$5.36	\$17.01	\$6.26
Calvert Cliffs	1,726	\$38.43	\$48.94	\$51.70	\$0.19	\$2.14	\$7.70	\$5.36	\$17.01	\$6.26
Cook	2,177	\$30.39	\$42.30	\$44.68	\$0.13	NA	NA	\$5.36	\$17.01	\$6.26
Davis Besse	894	\$31.49	\$42.48	\$44.92	\$0.21	\$1.34	\$7.33	\$5.38	\$26.09	\$9.61
Dresden	1,797	\$26.54	\$37.53	\$39.75	\$0.23	\$1.34	\$7.33	\$5.36	\$17.01	\$6.26
Hope Creek	1,172	\$27.81	\$35.22	\$37.35	\$0.47	\$2.24	\$7.77	\$5.36	\$17.01	\$6.26
LaSalle	2,265	\$25.13	\$37.89	\$40.18	\$0.13	\$1.34	\$7.33	\$5.36	\$17.01	\$6.26
Limerick	2,242	\$27.53	\$35.30	\$37.43	\$0.10	\$2.24	\$7.77	\$5.36	\$17.01	\$6.26
North Anna	1,892	\$36.95	\$47.58	\$50.31	\$0.18	NA	\$11.22	\$5.36	\$17.01	\$6.26
Peach Bottom	2,550	\$27.64	\$35.17	\$37.30	\$0.31	\$2.24	\$7.77	\$5.36	\$17.01	\$6.26
Perry	1,240	\$32.47	\$44.42	\$46.95	\$0.21	\$1.34	\$7.33	\$5.38	\$26.09	\$9.61
Quad Cities	1,819	\$26.08	\$36.41	\$38.57	\$0.13	\$1.34	\$7.33	\$5.36	\$17.01	\$6.26
Salem	2,285	\$27.78	\$35.20	\$37.33	\$0.35	\$2.24	\$7.77	\$5.36	\$17.01	\$6.26
Surry	1,676	\$35.46	\$46.36	\$49.03	\$0.16	NA	\$11.22	\$5.36	\$17.01	\$6.26
Susquehanna	2,494	\$26.53	\$35.54	\$37.65	\$0.32	\$2.14	\$7.70	\$5.36	\$17.01	\$6.26

The MMU also calculates the capacity price that would be required to cover the net avoidable costs for each nuclear plant.

Based on the FERC order allowing the inclusion of major maintenance in energy offers, major maintenance costs can no longer be included in gross ACR values offered in the capacity market.<sup>47</sup> The MMU calculates the capacity price that would be required to cover the net avoidable costs for each nuclear plant with major maintenance included in avoidable costs and with major maintenance excluded from avoidable costs. For the case including major maintenance, gross ACR is NEI total cost including fuel, operating cost, and incremental capital expenditures. For the case excluding major maintenance, gross ACR is NEI total cost including fuel and operating cost, excluding capital expenditures as a proxy for fixed VOM, given that NEI does not provide a breakout of major maintenance. NEI incremental capital expenditures are likely to be a conservatively low estimate of major maintenance expense.

47 See 167 FERC ¶ 61,030 at P 41 (2019).

All generating plants including nuclear plants must cover their gross avoidable costs, including major maintenance, to remain economically viable. All of the MMU analysis of nuclear plant economics includes gross avoidable costs as reported by NEI unless explicitly stated otherwise.

In Table 7-22, the capacity price required to cover avoidable costs in \$/MWh is calculated by taking the total NEI costs in \$/MWh and subtracting the total expected energy and ancillary services revenues in \$/MWh. Total expected energy revenue is the unit's ICAP multiplied by the average forward LMP multiplied by the class average capacity factor. Total expected ancillary services revenue is unit specific reactive capability revenue.<sup>48</sup> The capacity price required to cover avoidable costs in \$/MW-day is calculated by multiplying the required price in \$/MWh by 24. Plants

may have actual operating costs higher or lower than the NEI average.

In Table 7-22, the capacity price required to cover avoidable costs is \$0/MW-day for some units in 2024 and all units in 2025 and 2026 using NEI data as reported including capital expenditures, and is \$0/MW-day for all plants, excluding capital expenditures as a proxy for major maintenance, in 2024, 2025, and 2026.<sup>49</sup> Net revenues based on forward energy prices alone are greater than or equal to avoidable costs in 2025 and 2026 without any contribution from capacity market revenues for all plants. The result is that all net ACR values for 2025 and 2026 in Table 7-22 are zero.

48 Reactive Supply & Voltage Control Revenue Requirements available from PJM <<https://www.pjm.com/markets-and-operations/billing-settlements-and-credit.aspx>>.

49 PJM's tariff definition of avoidable costs excludes major maintenance. PJM includes major maintenance costs in the definition of short run marginal costs in energy offers.

Table 7-22 Net ACR

	ICAP (MW)	Net ACR (\$/MWh)			Net ACR (\$/MW-Day)			Net ACR Excluding Capital (\$/MW-Day)		
		2024	2025	2026	2024	2025	2026	2024	2025	2026
Beaver Valley	1,808	\$0.00	\$0.00	\$0.00	\$0.00	\$0.00	\$0.00	\$0.00	\$0.00	\$0.00
Braidwood	2,337	\$3.04	\$0.00	\$0.00	\$69.87	\$0.00	\$0.00	\$0.00	\$0.00	\$0.00
Byron	2,300	\$2.53	\$0.00	\$0.00	\$58.05	\$0.00	\$0.00	\$0.00	\$0.00	\$0.00
Calvert Cliffs	1,726	\$0.00	\$0.00	\$0.00	\$0.00	\$0.00	\$0.00	\$0.00	\$0.00	\$0.00
Cook	2,177	\$0.00	\$0.00	\$0.00	\$0.00	\$0.00	\$0.00	\$0.00	\$0.00	\$0.00
Davis Besse	894	\$9.38	\$0.00	\$0.00	\$215.47	\$0.00	\$0.00	\$0.00	\$0.00	\$0.00
Dresden	1,797	\$1.86	\$0.00	\$0.00	\$42.69	\$0.00	\$0.00	\$0.00	\$0.00	\$0.00
Hope Creek	1,172	\$0.35	\$0.00	\$0.00	\$8.06	\$0.00	\$0.00	\$0.00	\$0.00	\$0.00
LaSalle	2,265	\$3.37	\$0.00	\$0.00	\$77.39	\$0.00	\$0.00	\$0.00	\$0.00	\$0.00
Limerick	2,242	\$1.00	\$0.00	\$0.00	\$23.07	\$0.00	\$0.00	\$0.00	\$0.00	\$0.00
North Anna	1,892	\$0.00	\$0.00	\$0.00	\$0.00	\$0.00	\$0.00	\$0.00	\$0.00	\$0.00
Peach Bottom	2,550	\$0.68	\$0.00	\$0.00	\$15.66	\$0.00	\$0.00	\$0.00	\$0.00	\$0.00
Perry	1,240	\$8.41	\$0.00	\$0.00	\$193.06	\$0.00	\$0.00	\$0.00	\$0.00	\$0.00
Quad Cities	1,819	\$2.42	\$0.00	\$0.00	\$55.67	\$0.00	\$0.00	\$0.00	\$0.00	\$0.00
Salem	2,285	\$0.50	\$0.00	\$0.00	\$11.50	\$0.00	\$0.00	\$0.00	\$0.00	\$0.00
Surry	1,676	\$0.00	\$0.00	\$0.00	\$0.00	\$0.00	\$0.00	\$0.00	\$0.00	\$0.00
Susquehanna	2,494	\$1.78	\$0.00	\$0.00	\$40.96	\$0.00	\$0.00	\$0.00	\$0.00	\$0.00

Table 7-23 shows the surplus or shortfall that would be received net of avoidable costs and incremental capital expenditures by year, based on forward prices, on a per MWh basis. The fuel and operating costs are the 2022 NEI fuel, operating, and capital costs. Plants may have operating costs higher or lower than the NEI average. Table 7-23 shows the total dollar surplus or shortfall and adjusts energy revenues and operating costs using the annual class average capacity factor.

Hope Creek, Quad Cities, and Salem all currently receive state subsidies.<sup>50 51</sup> The NJ Board of Public Utilities, having received no applications as of December 1, 2023, closed the third eligibility period of the ZEC program for the period beginning June 1, 2025.<sup>52</sup> Braidwood, Byron, Dresden, and LaSalle will receive a state subsidy if necessary to meet a target net revenue value, in dollars per MWh, from the energy and capacity markets.<sup>53</sup> All existing nuclear plants will receive a federal subsidy if necessary to meet a target revenue value, in dollars per MWh, from the energy market.<sup>54</sup>

The Inflation Reduction Act added a significant new federal subsidy for existing nuclear power plants.<sup>55</sup> All existing nuclear plants will receive the Zero Emission Nuclear Power Production Credit (Nuclear PTC) if revenues from energy, ancillary, capacity markets, and any state subsidies are between \$25.00/MWh and \$43.75/MWh, adjusted for inflation. The Nuclear PTC of \$3.00/MWh is increased by a factor of five to \$15.00/MWh if certain prevailing wage requirements are met. The Nuclear PTC creates a revenue floor of \$40.00/MWh and does not create a revenue ceiling. If nuclear revenues are greater than \$43.75/MWh, the Nuclear PTC subsidy does not apply and units keep all profits.

50 Illinois Commerce Commission, Report to the General Assembly in Compliance with Section 1-75(d-5) of the [CEJA, Public Act 102-0662], 20 ILCS 3855/1-75(d-5)(f)(2) (August 2019). The report finds that while total ZECs payments are limited by rate impact caps and volume caps, the law's limitation does not unduly constrain the procurement of ZECs.

51 Application of PSEG Nuclear, LLC for the Zero Emission Certificate Program – Hope Creek, Order Determining the Eligibility of Hope Creek Nuclear Generator to Receive ZECs, BPU Docket No. ER20080559 (April 27, 2021). Application of PSEG Nuclear, LLC for the Zero Emission Certificate Program – Salem 1, Order Determining the Eligibility of Salem Unit 1 Nuclear Generator to Receive ZECs, BPU Docket No. ER20080557 (April 27, 2021). Application of PSEG Nuclear, LLC for the Zero Emission Certificate Program – Salem 2, Order Determining the Eligibility of Salem Unit 2 Nuclear Generator to Receive ZECs, BPU Docket No. ER20080557 (April 27, 2021).

52 See New Jersey BPU, In the Matter of the Third Eligibility Period for the Zero Emission Certificate Program Pursuant to N.J.S.A. 48-3-87.3 TO 87.7, Order Closing the Third Eligibility Period of the Zero Emission Certificate Program, Docket No. EO23080548 (February 14, 2024).

53 CEJA, Public Act 102-0662, 20 ILCS 3855/1-75.

54 See Inflation Reduction Act of 2022, Public Law 117-169 (August 16, 2022).

55 See Inflation Reduction Act of 2022, Public Law 117-169 (August 16, 2022).



The 2024 nuclear unit surplus values are shown in Table 7-23 based on forward prices as of September 30, 2024, NEI average costs, and expected subsidy values.<sup>56</sup> The current analysis, based on forward prices for energy and known forward prices for capacity, shows that 7 of the 14 PJM nuclear plants analyzed are expected to have a surplus excluding any subsidy amount in 2024. All nuclear plants are expected to have a surplus in 2024 when subsidies are included.

**Table 7-23 Nuclear unit forward annual surplus (shortfall) for 2024 and 2025**<sup>57 58 59</sup>

	Surplus (Shortfall) (\$/MWh)		Subsidy (\$/MWh)		Surplus (Shortfall) Excluding Subsidy (\$ in millions)		Surplus (Shortfall) Including Subsidy (\$ in millions)	
	2024	2025	2024	2025	2024	2025	2024	2025
Beaver Valley	\$4.46	\$22.29	\$8.55	\$0.00	\$67.8	\$338.2	\$197.7	\$338.2
Braidwood	(\$1.70)	\$16.94	\$13.45	\$0.00	(\$33.4)	\$332.3	\$230.8	\$332.3
Byron	(\$1.18)	\$16.15	\$13.05	\$0.00	(\$22.9)	\$311.8	\$229.4	\$311.8
Calvert Cliffs	\$12.13	\$28.20	\$2.40	\$0.00	\$175.9	\$408.3	\$210.8	\$408.3
Cook	NA	NA	\$10.60	\$1.05	NA	NA	NA	NA
Davis Besse	(\$8.04)	\$8.94	\$8.55	\$0.00	(\$60.4)	\$67.1	\$3.8	\$67.1
Dresden	(\$0.52)	\$16.46	\$12.50	\$0.00	(\$7.8)	\$248.4	\$181.0	\$248.4
Hope Creek	\$1.89	\$14.83	\$10.00	\$4.17	\$18.6	\$145.9	\$117.1	\$186.8
LaSalle	(\$2.03)	\$16.71	\$13.70	\$0.00	(\$38.6)	\$317.8	\$222.3	\$317.8
Limerick	\$1.24	\$14.54	\$11.10	\$0.45	\$23.3	\$273.7	\$232.5	\$282.1
North Anna	NA	\$30.34	\$5.30	\$0.00	NA	\$481.8	NA	\$481.8
Peach Bottom	\$1.56	\$14.62	\$10.85	\$0.40	\$33.4	\$313.0	\$266.0	\$321.6
Perry	(\$7.06)	\$10.88	\$7.80	\$0.00	(\$73.6)	\$113.3	\$7.7	\$113.3
Quad Cities	(\$1.08)	\$15.24	\$16.50	\$16.50	(\$16.5)	\$232.7	\$235.8	\$484.4
Salem	\$1.74	\$14.69	\$10.00	\$4.17	\$33.4	\$281.8	\$225.5	\$361.6
Surry	NA	\$29.11	\$6.50	\$0.00	NA	\$409.5	NA	\$409.5
Susquehanna	\$0.35	\$14.93	\$11.80	\$0.15	\$7.4	\$312.6	\$254.8	\$315.8

<sup>56</sup> Gross receipts used to calculate the unit subsidy include energy revenue, ancillary services revenue, capacity revenue, and state ZECs subsidies, and assumes the unit meets prevailing wage requirements and receives the Zero Emission Nuclear Power Production Credit 5 times multiplier. Effectively, nuclear power plants will receive the higher of the state or federal subsidy amount.

<sup>57</sup> The state subsidy value for Braidwood, Byron, Dresden, and LaSalle is calculated by taking the applicable Baseline Cost less forward energy prices and known capacity prices.

<sup>58</sup> The federal subsidy value for nuclear plants is defined in the Inflation Reduction Act of 2022, Public Law 117-169 (August 16, 2022).

<sup>59</sup> North Anna and Surry are in Dominion FRR beginning with the 2022/2023 Delivery Year. North Anna and Surry rejoined the PJM Capacity Market beginning with the 2025/2026 Delivery Year.

