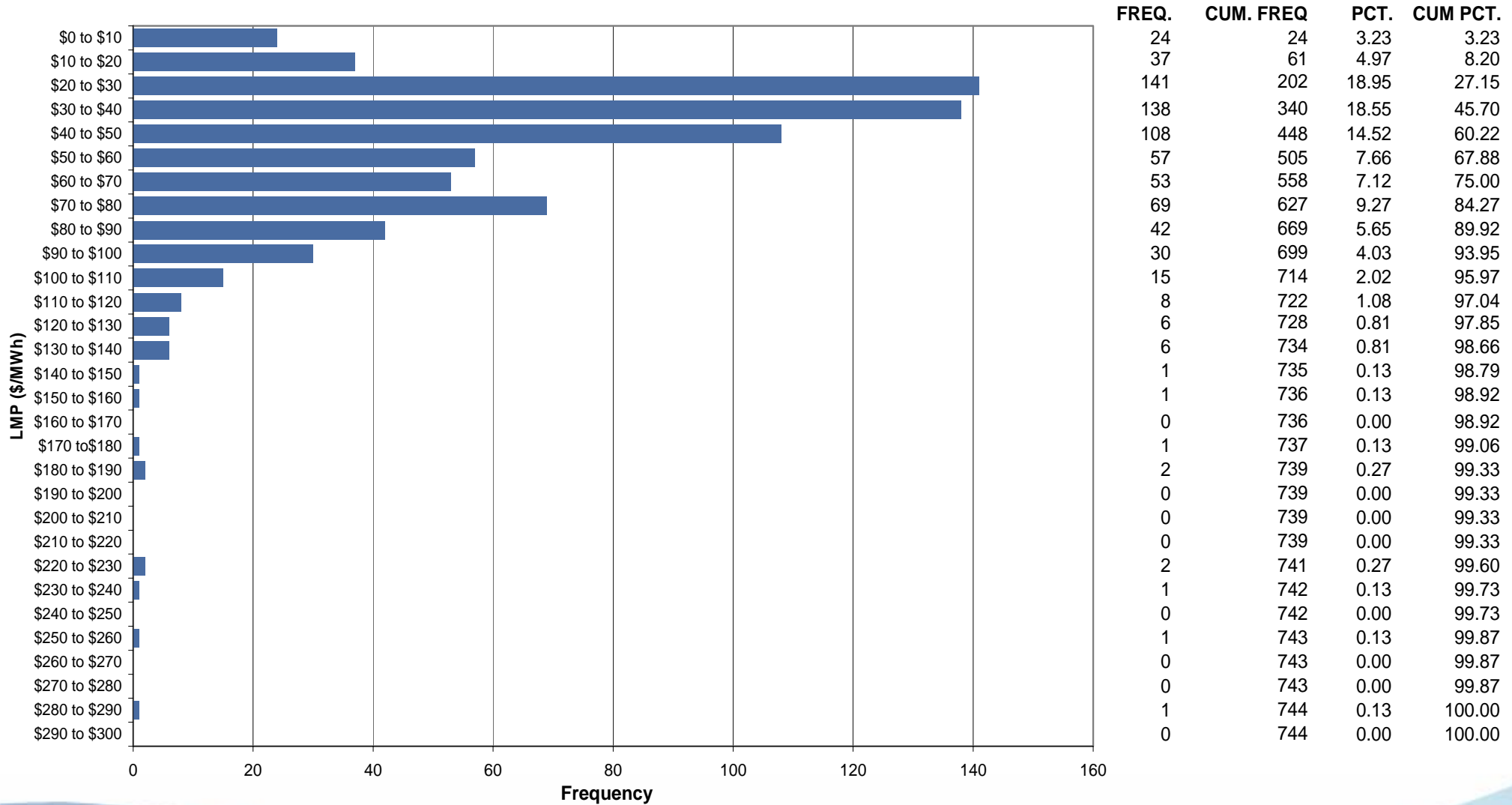




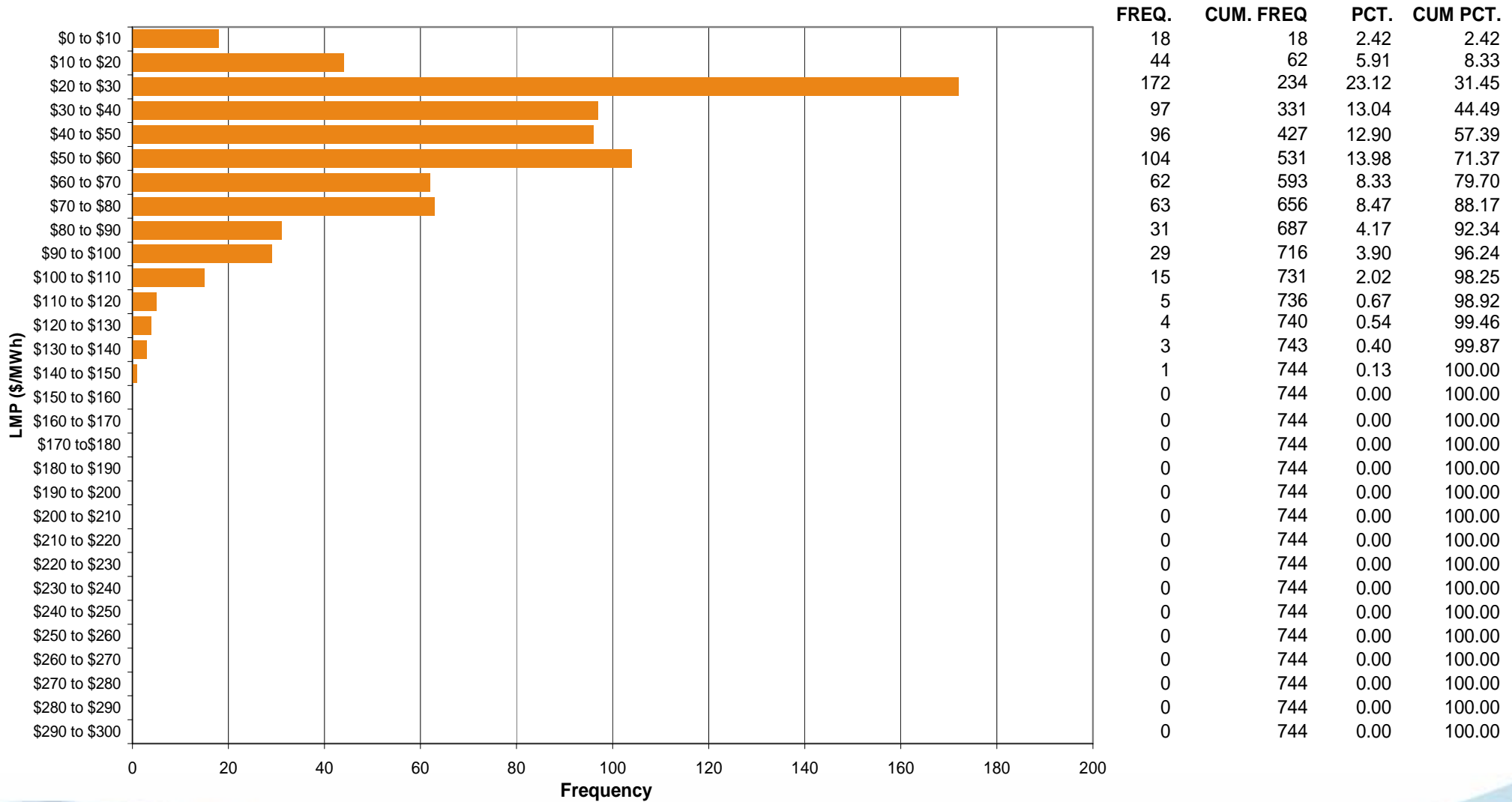
# AEP Control Zone Market Monitoring Report for July 2006

Market Monitoring Unit  
August 2006

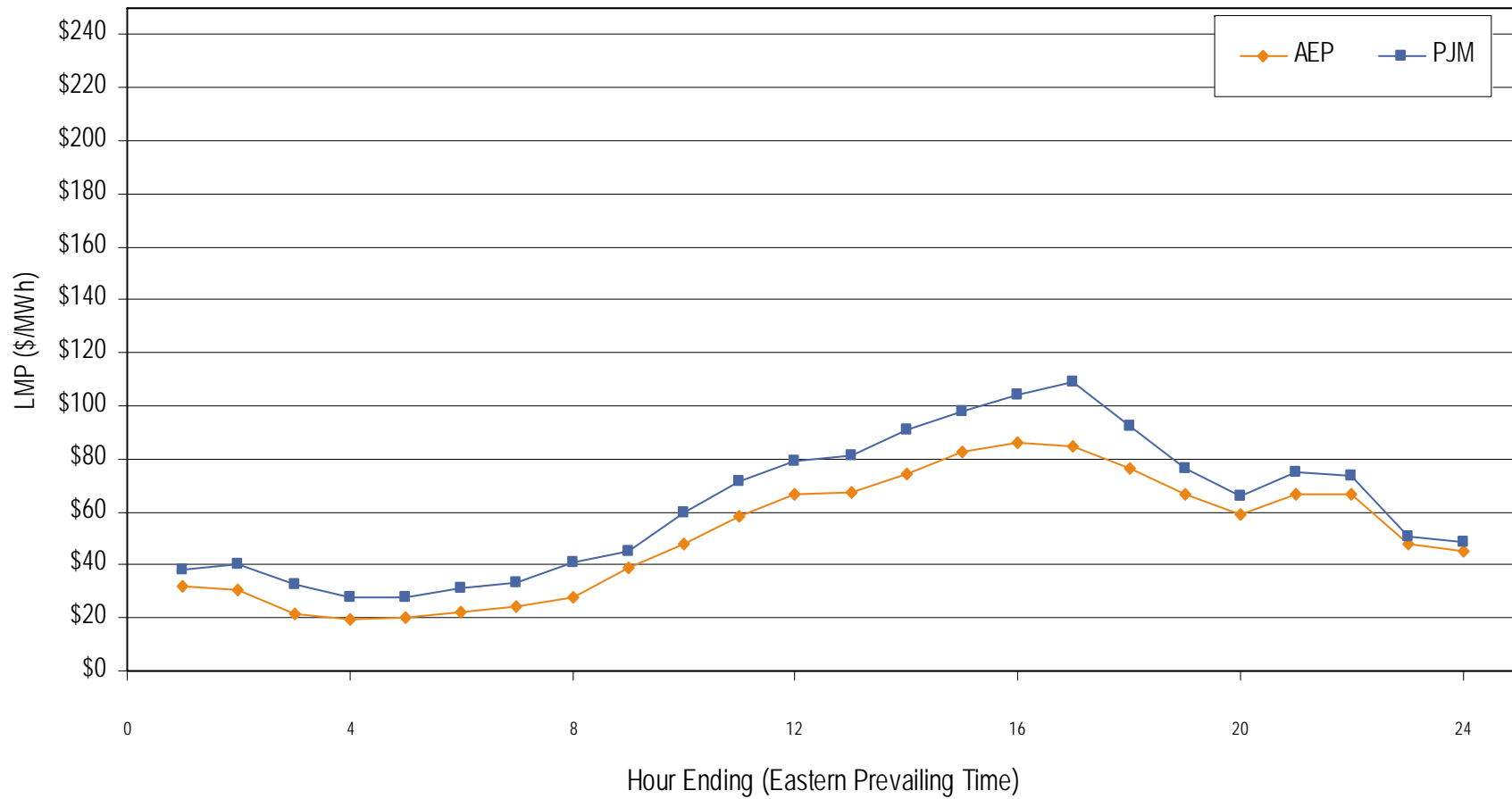
### Frequency distribution by hours of AEP real-time LMP July 2006



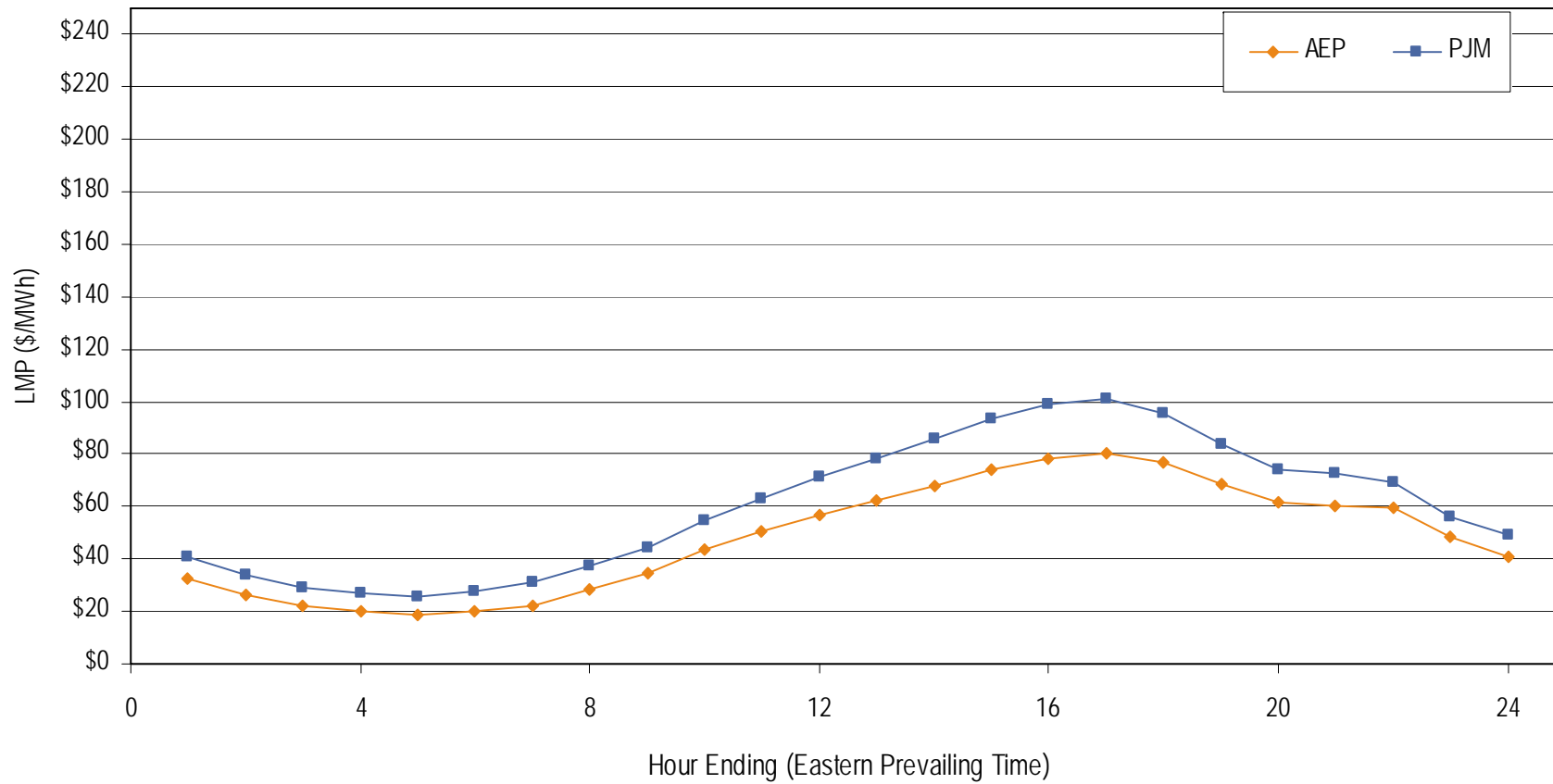
### Frequency distribution by hours of AEP day-ahead LMP July 2006



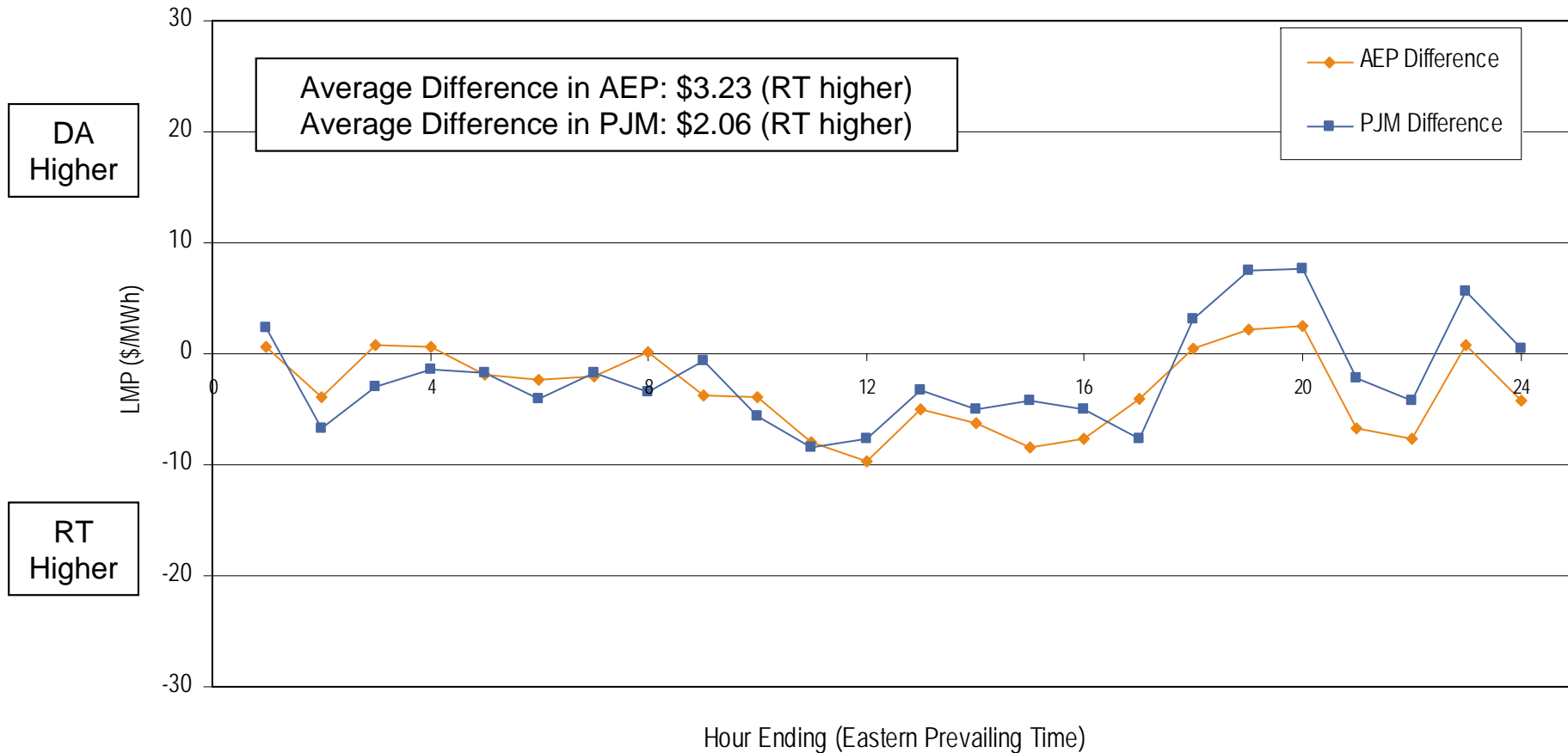
**Average Hourly Real-Time LMP  
July 2006**



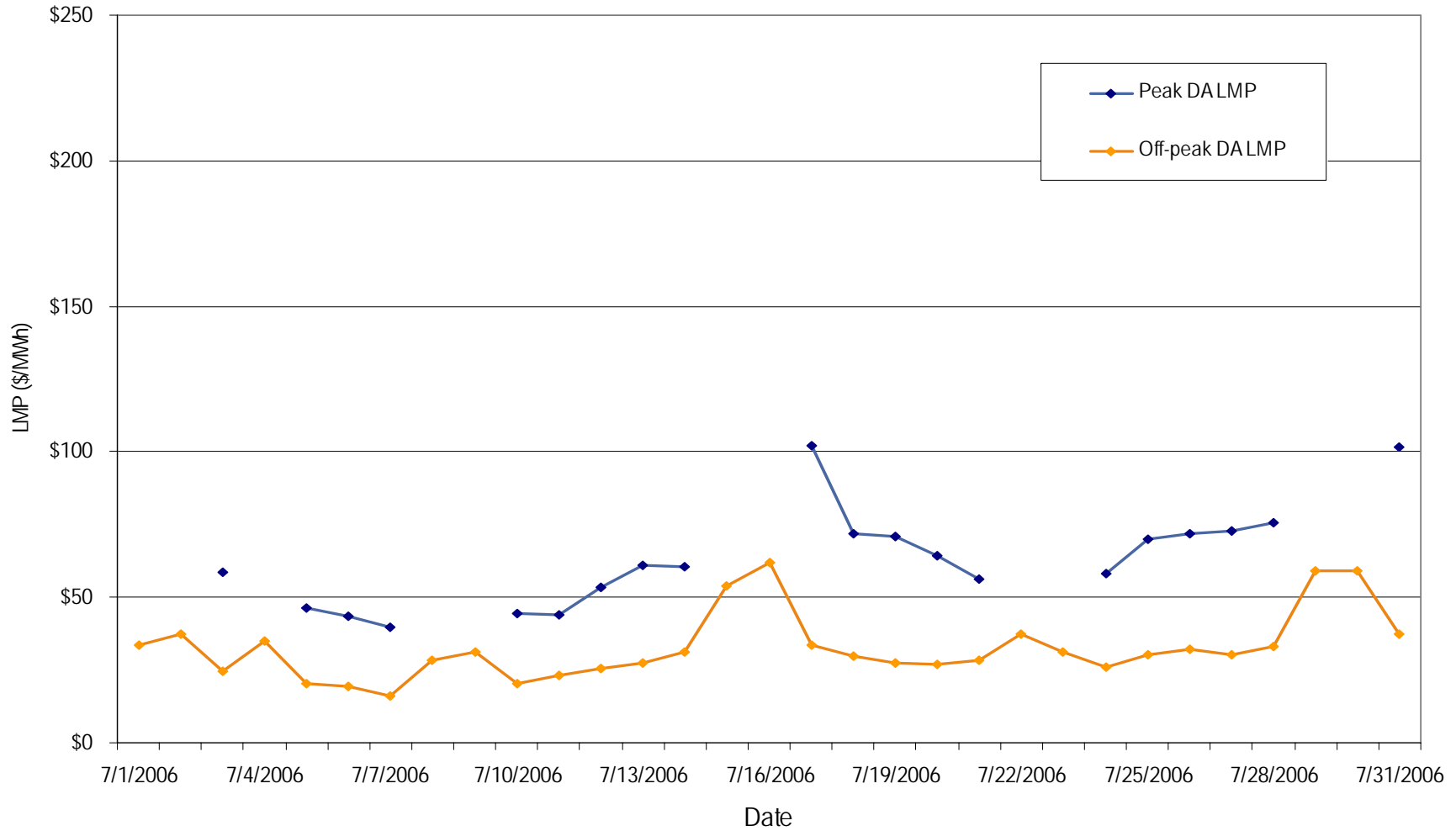
**Average Hourly Day-Ahead LMP  
July 2006**



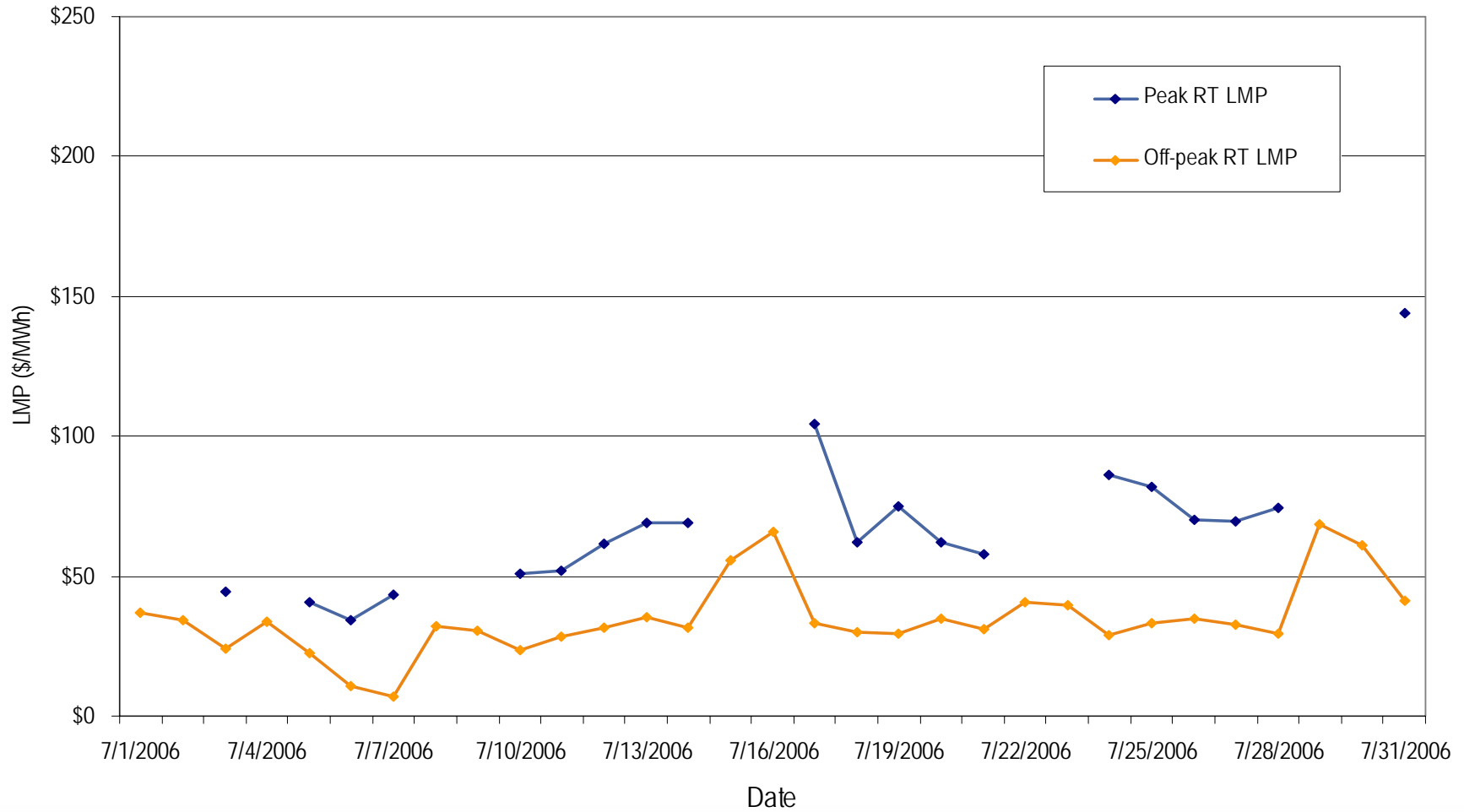
**Average Hourly Difference of Day-Ahead and Real-Time LMPs  
July 2006**



**AEP day-ahead peak and off-peak average daily LMP  
July 2006**

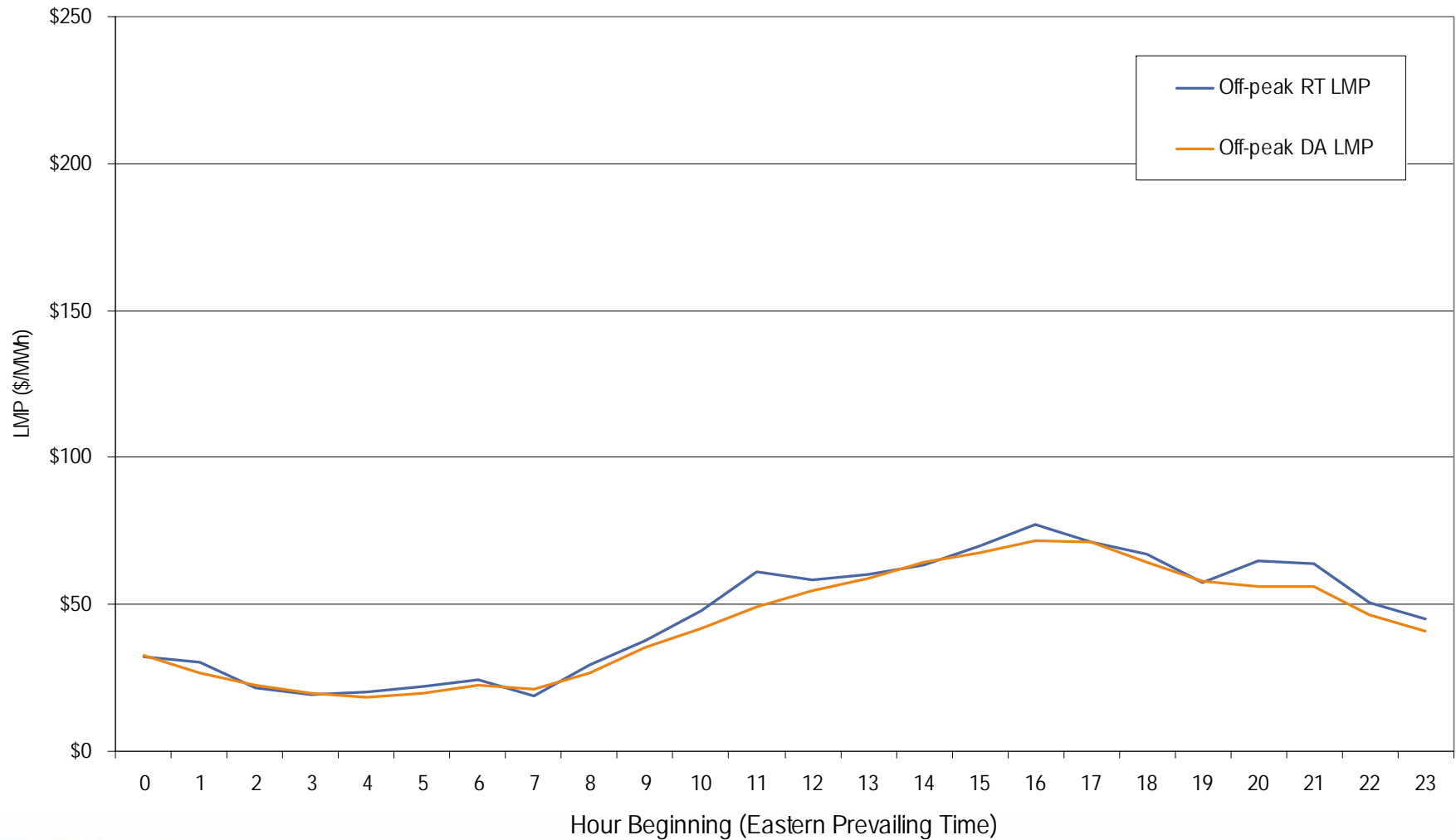


**AEP real-time peak and off-peak average daily LMP  
July 2006**

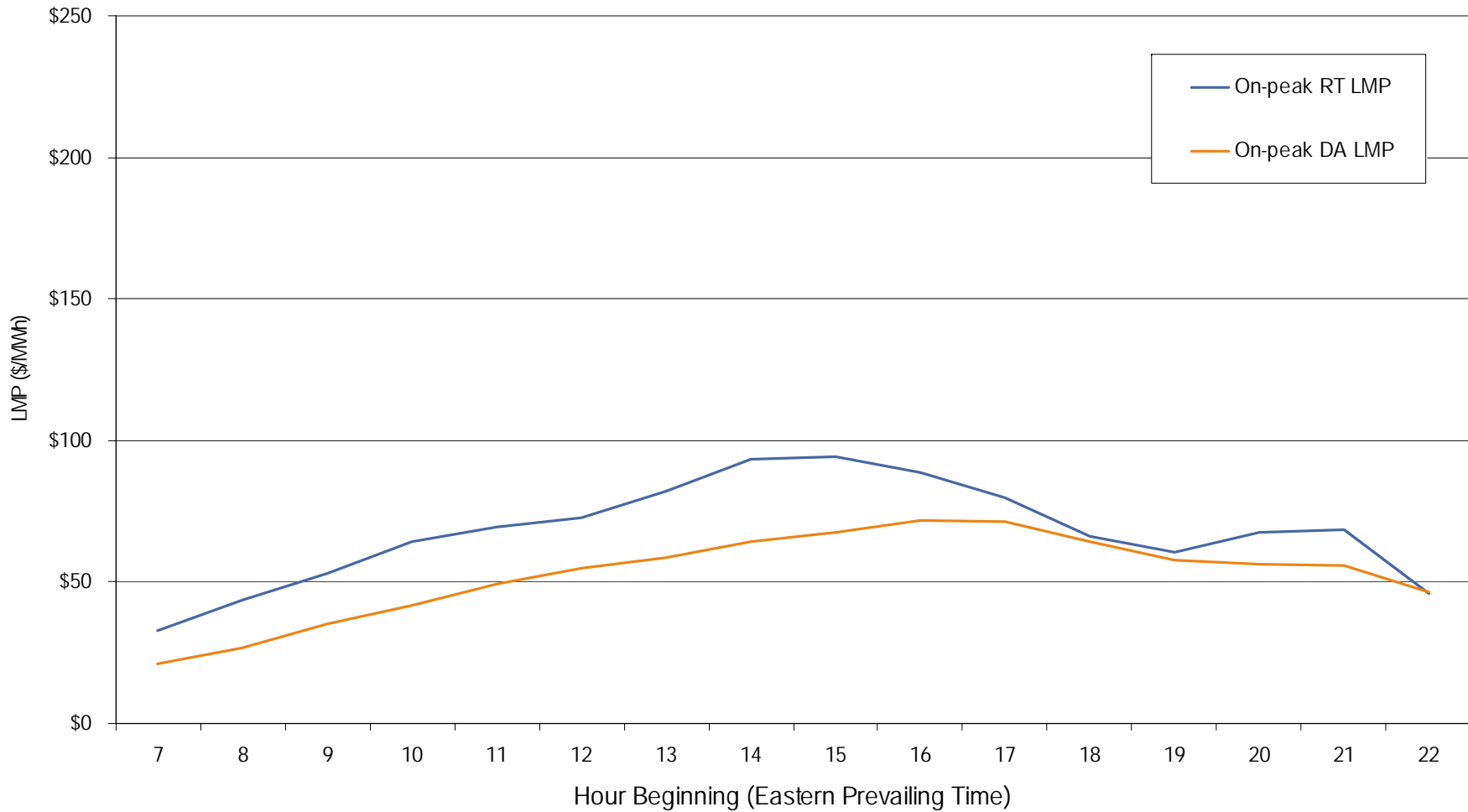




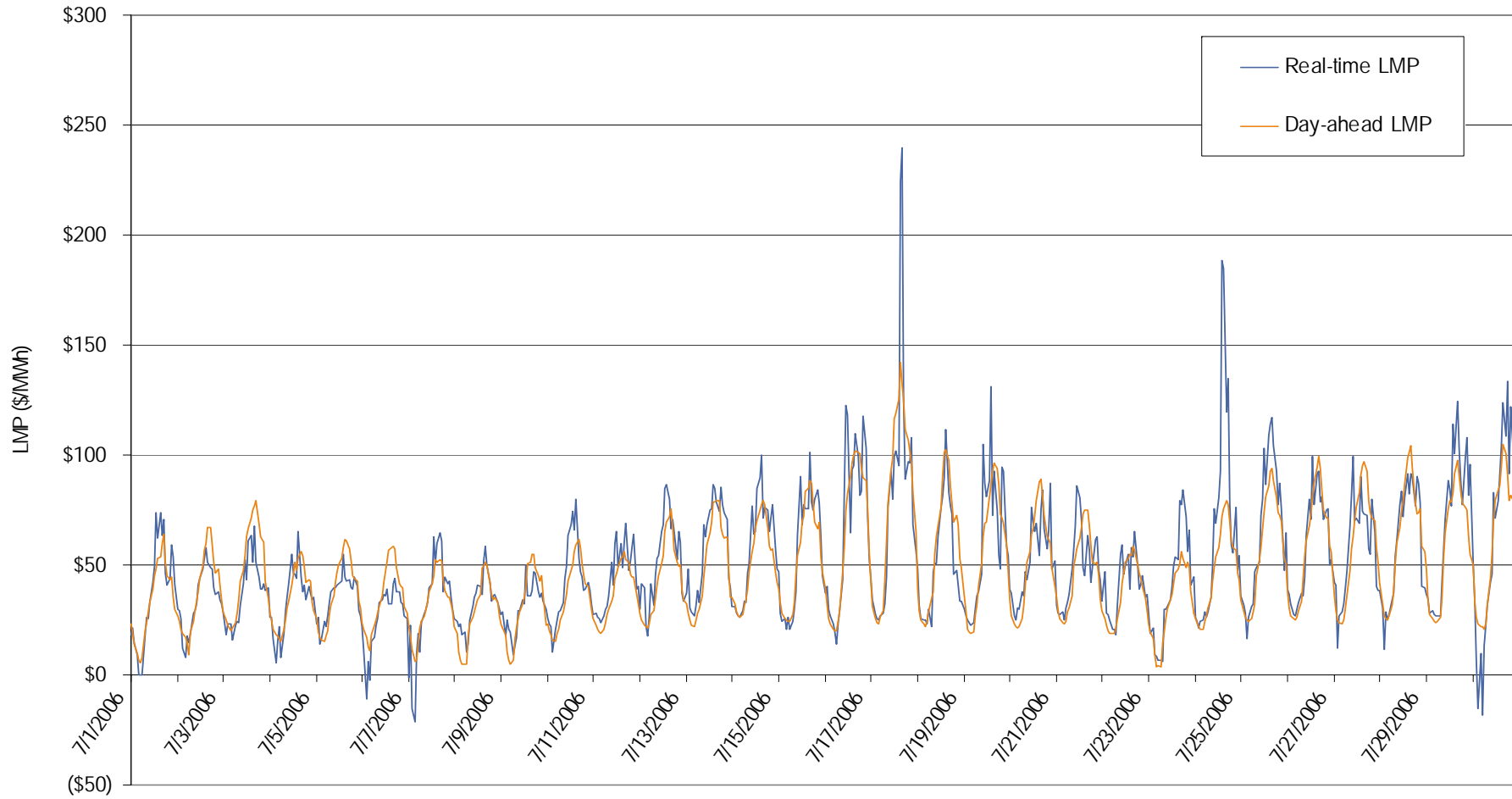
**AEP real-time and day-ahead hourly average off-peak LMP  
July 2006**



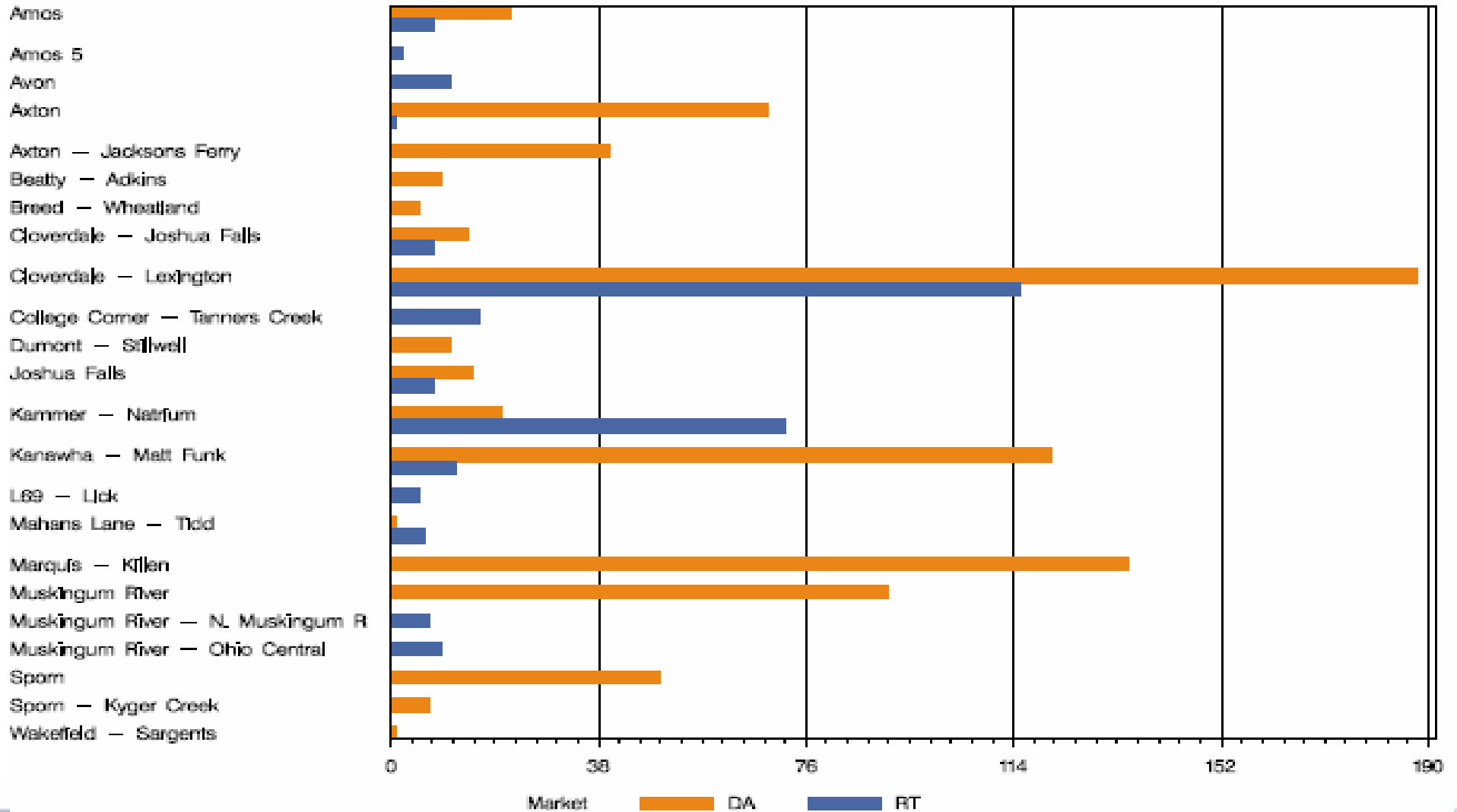
**AEP real-time and day-ahead hourly average on-peak LMP  
July 2006**



## AEP real-time and day-ahead hourly zonal LMP July 2006



## AEP Congestion Event Hours by Facility July 2006



## Offer Capping for July 2006:

- There were 280 event hours of Real-Time congestion in AEP in July.
  - There were 74 offer capped unit hours in Real-Time.
- There were 798 event hours of Day-Ahead congestion in AEP in July.
  - There was no offer capping in Day-Ahead.