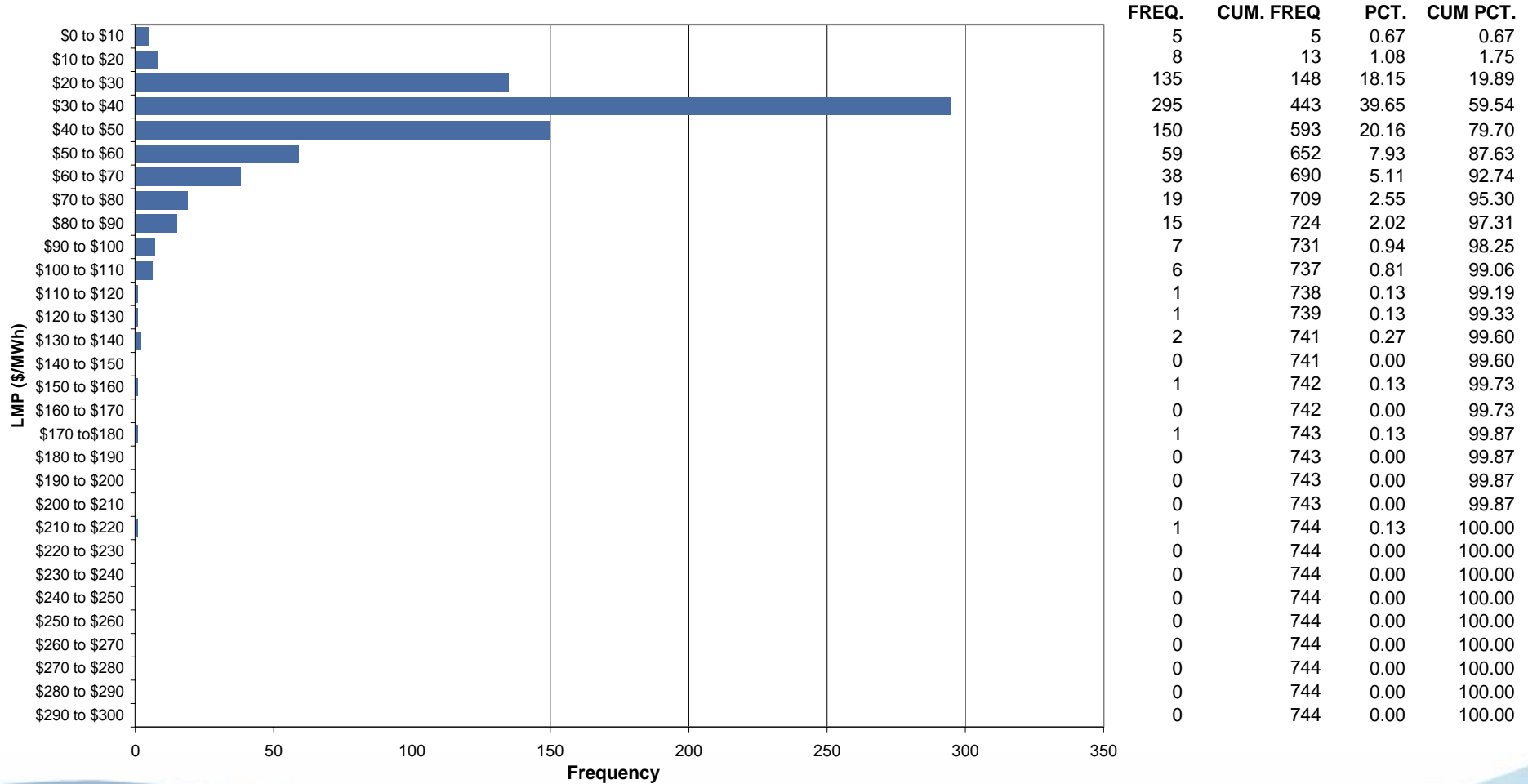




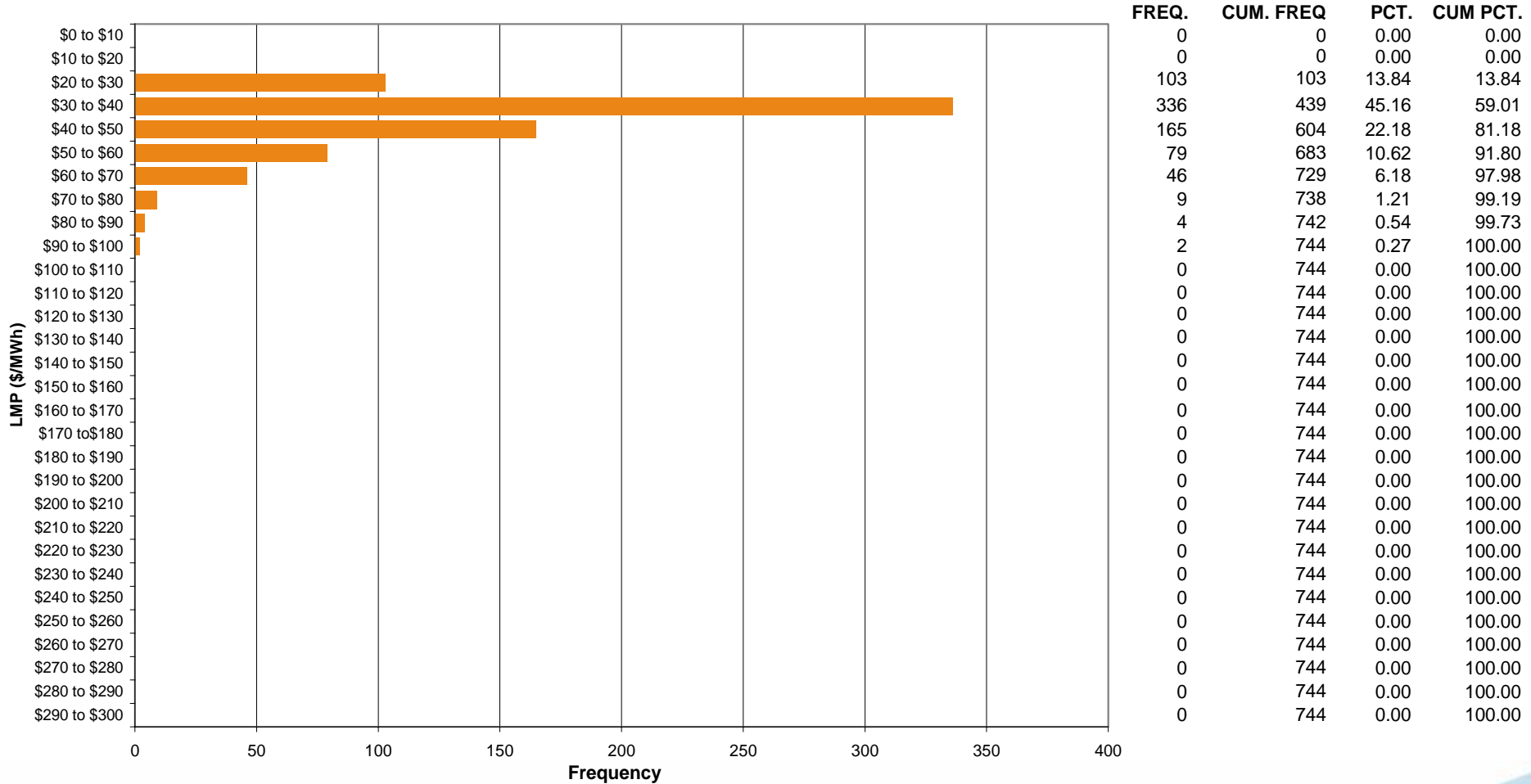
# ComEd Control Zone Market Monitoring Report for January 2006

Market Monitoring Unit  
February 2006

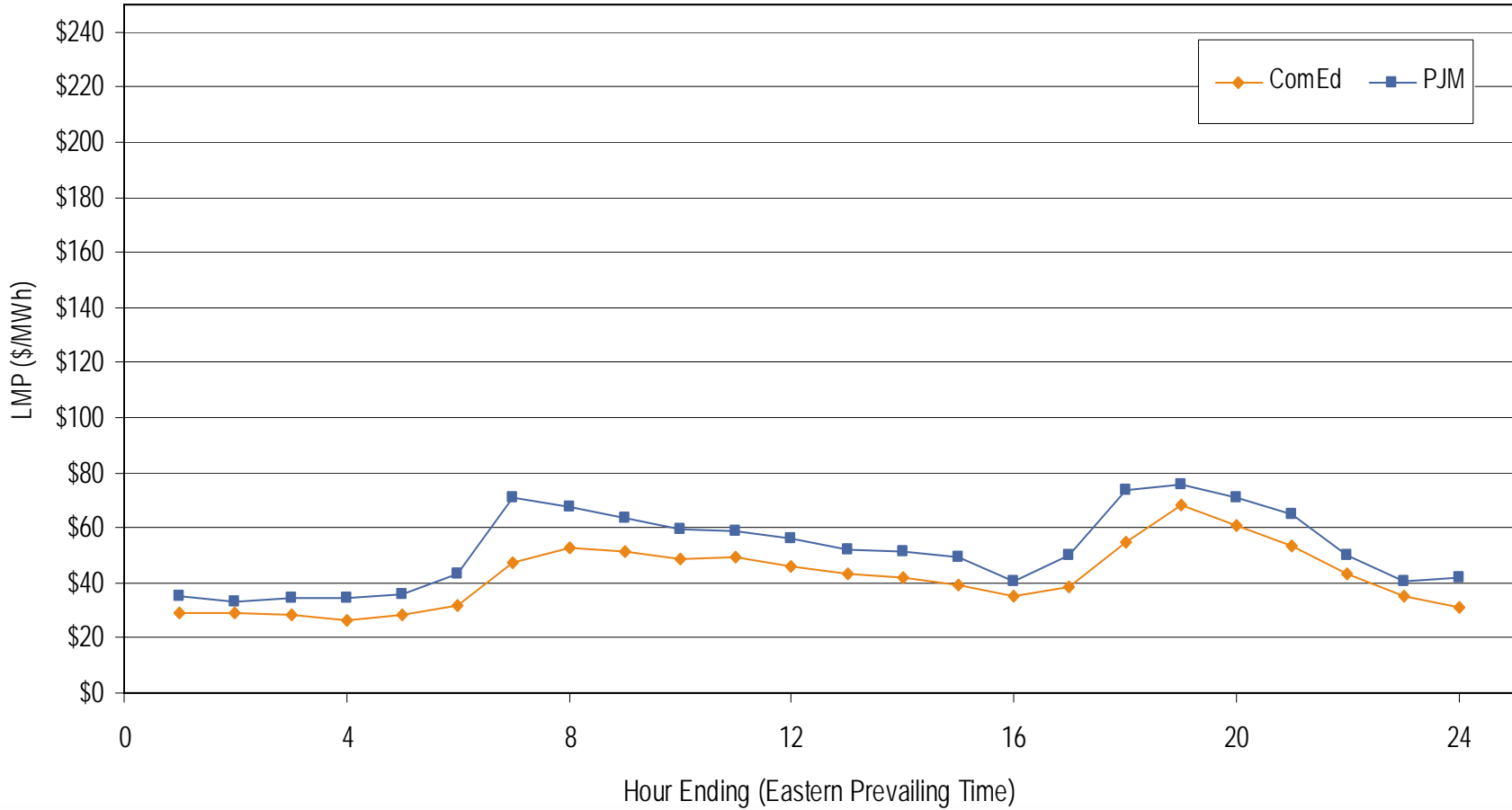
### Frequency Distribution by Hours of ComEd Real-time LMP January 2006



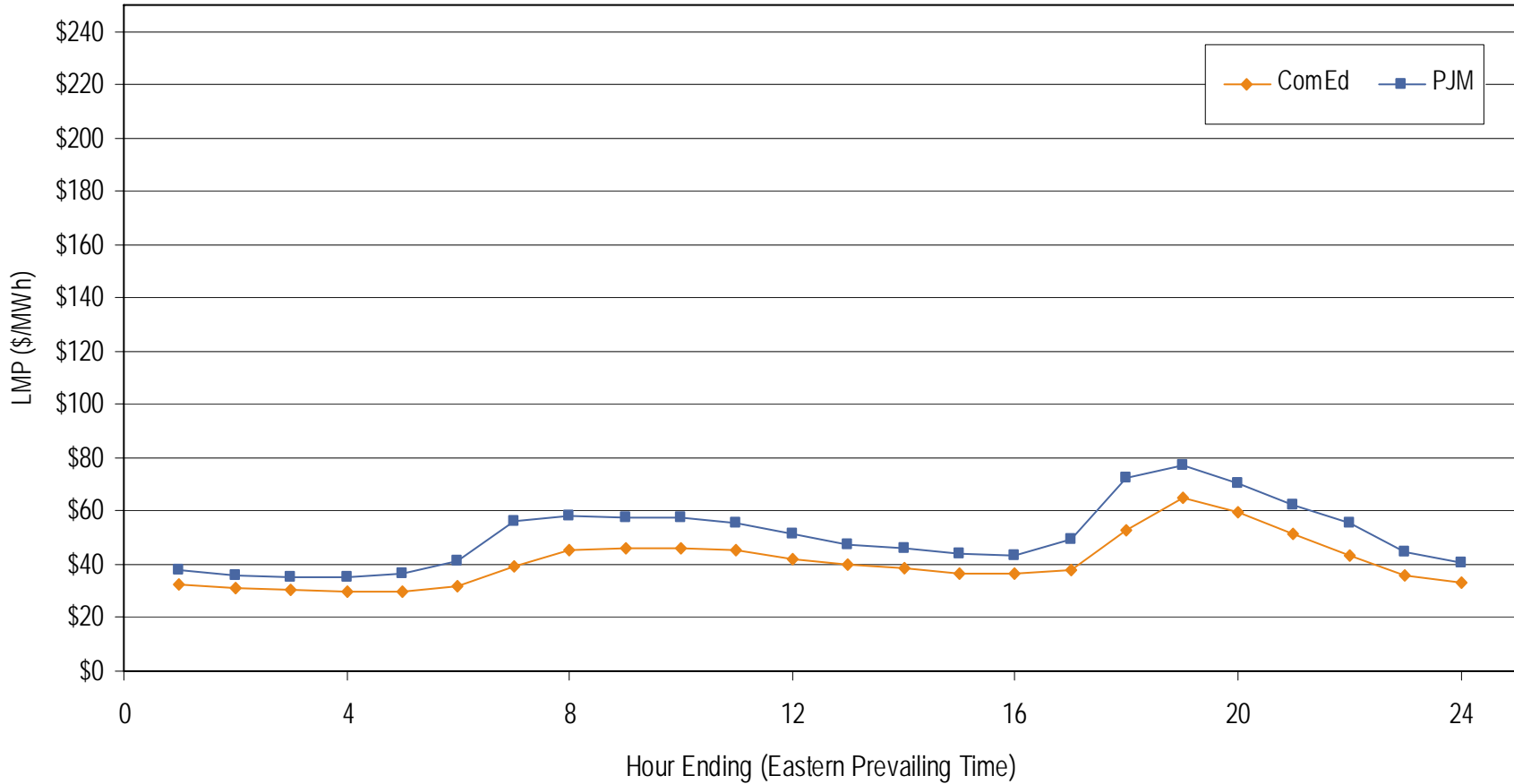
### Frequency Distribution by Hours of ComEd Day-ahead LMP January 2006



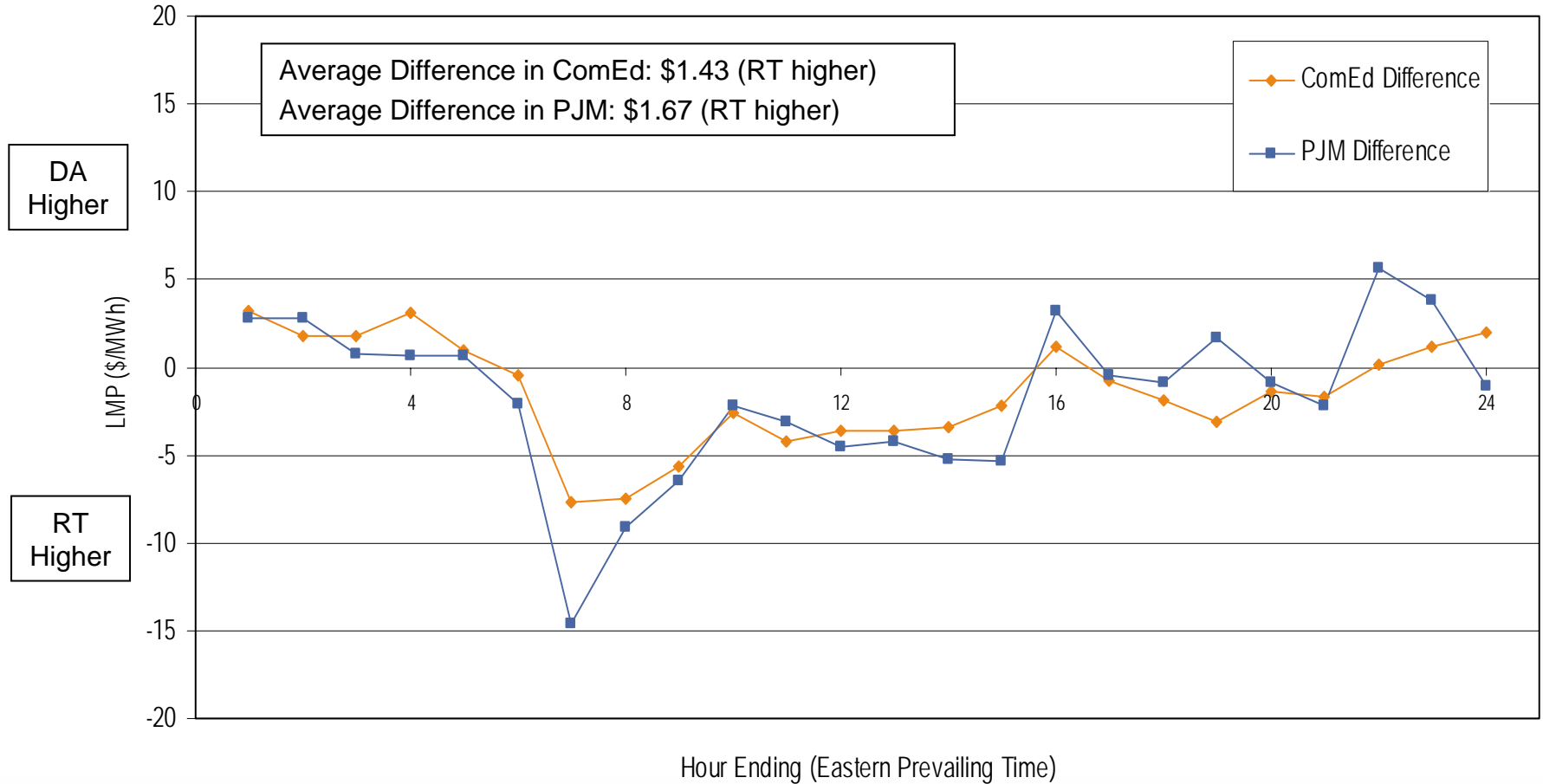
### Average Hourly Real-Time LMP January 2006



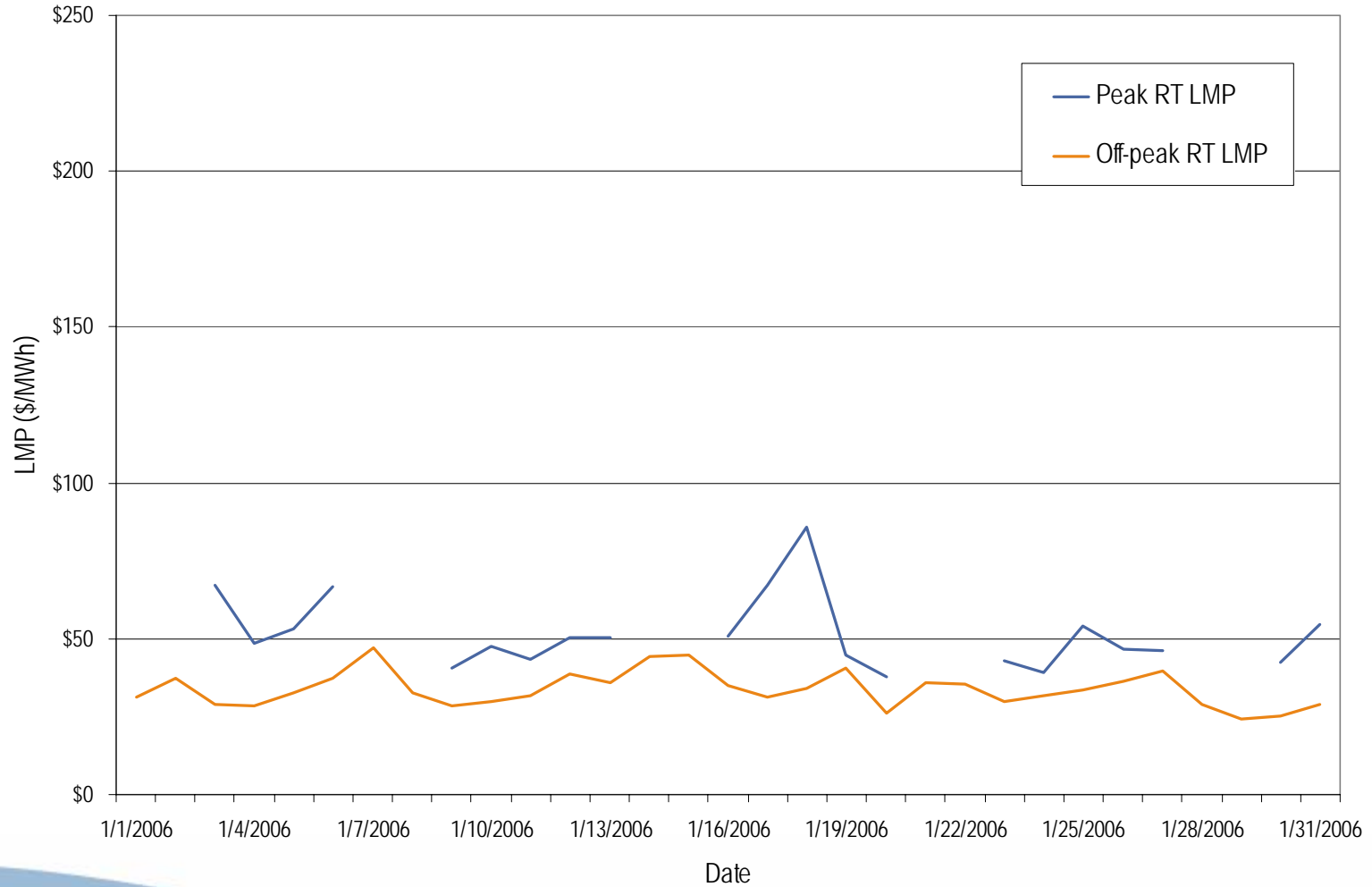
### Average Hourly Day-Ahead LMP January 2006



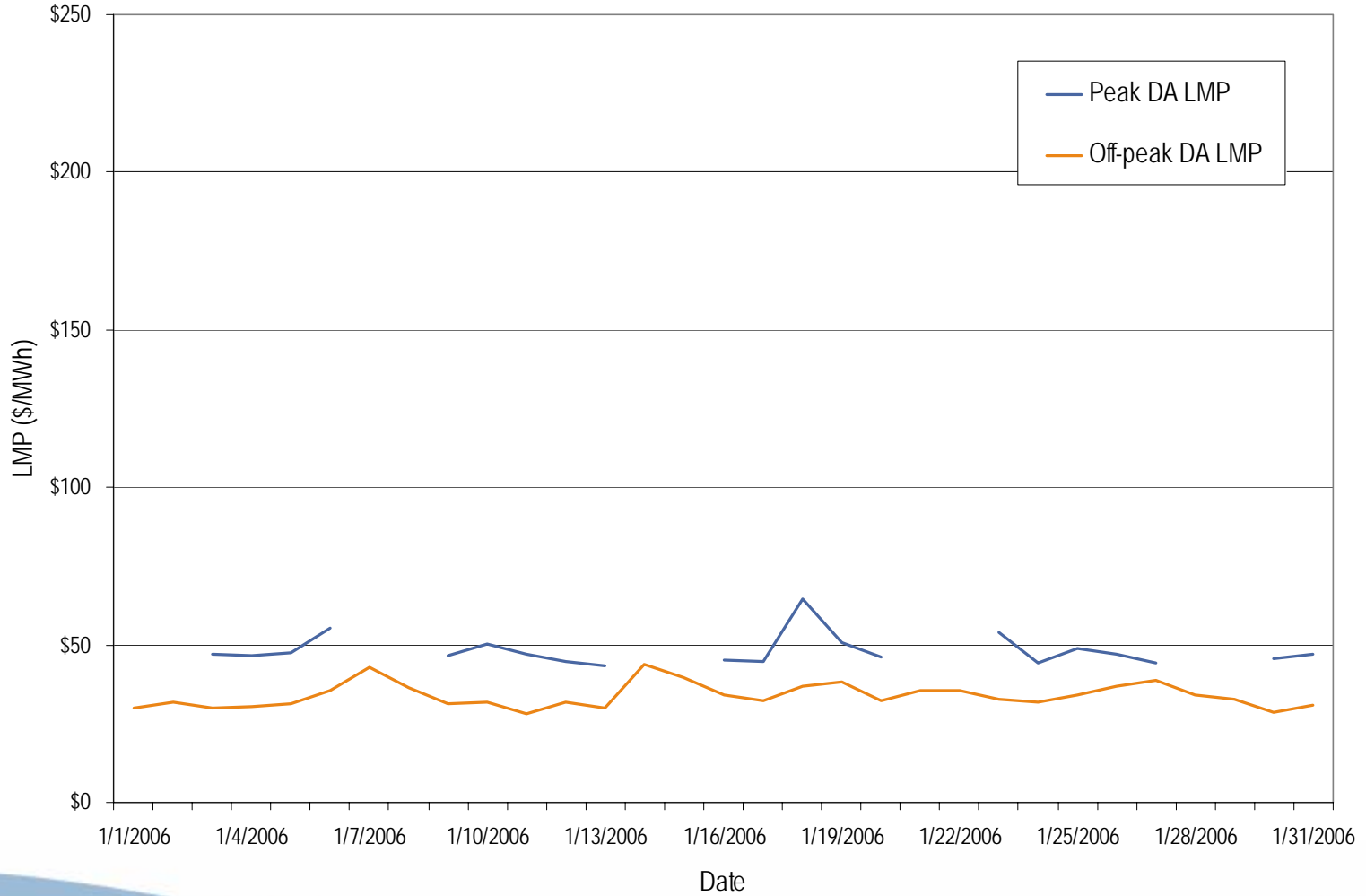
## Average Hourly Difference of Day-Ahead and Real-Time LMPs January 2006



## ComEd real-time peak and off-peak average daily LMP January 2006

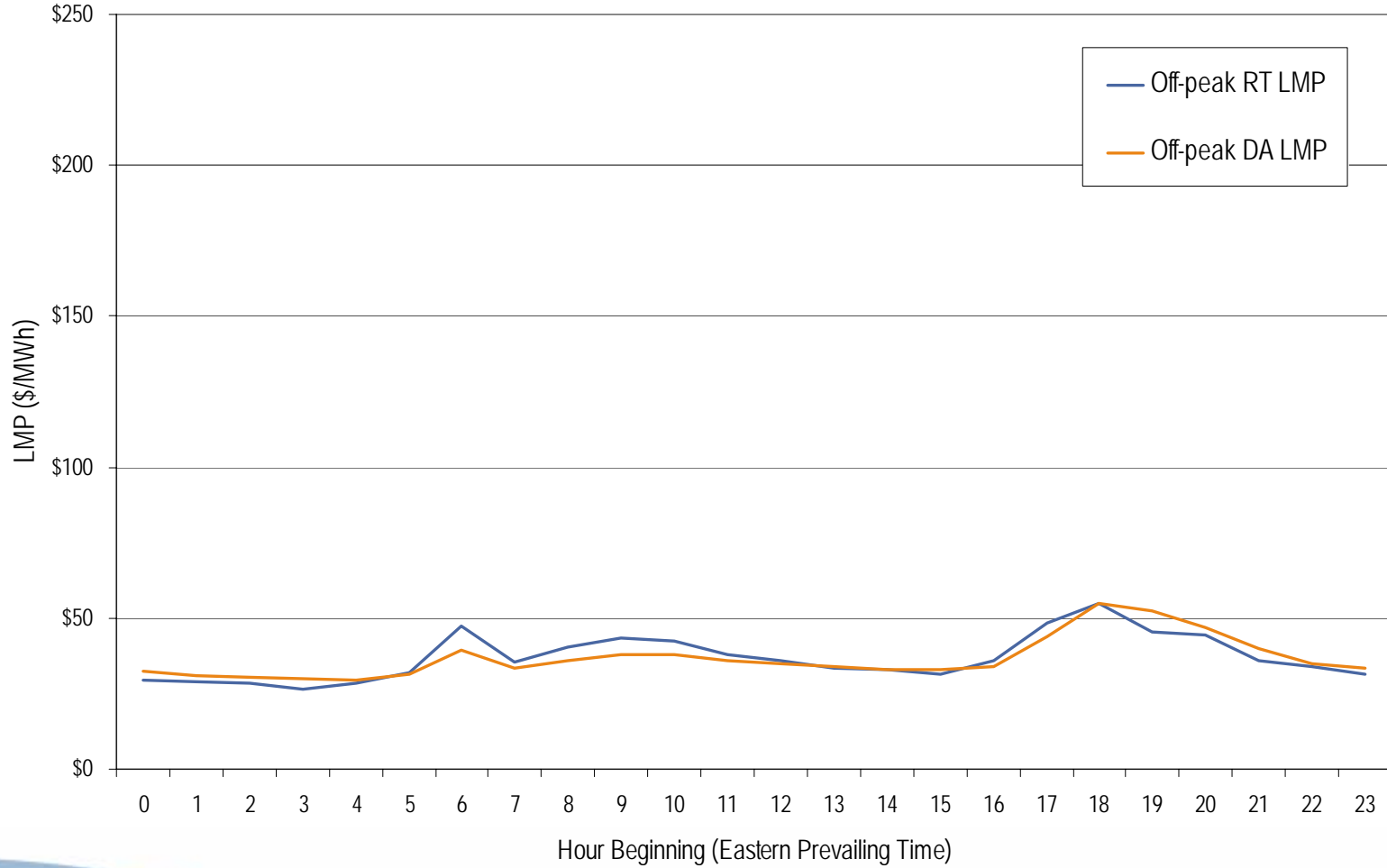


## ComEd day-ahead peak and off-peak average daily LMP January 2006

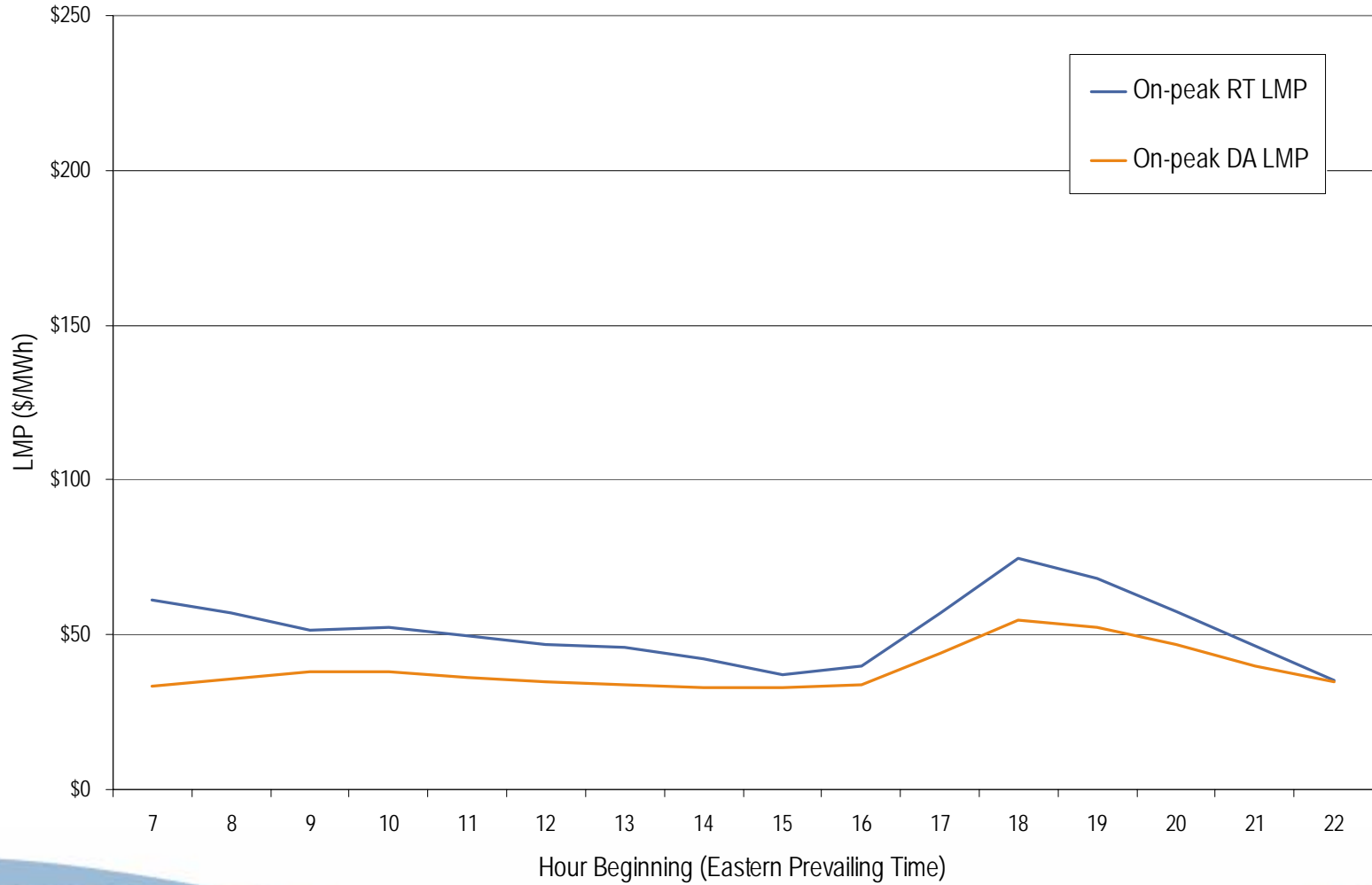




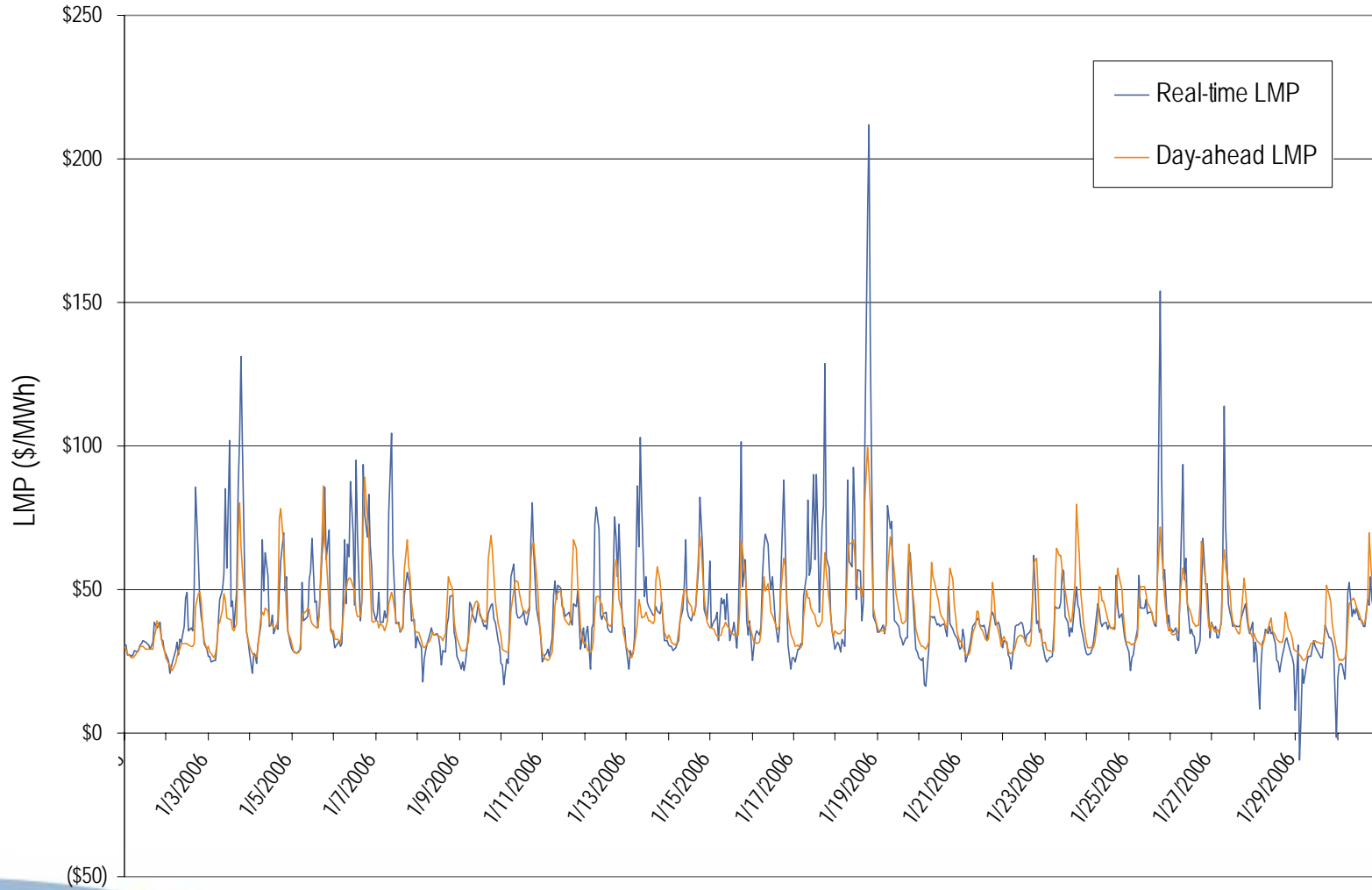
## ComEd real-time and day-ahead hourly average off-peak LMP January 2006



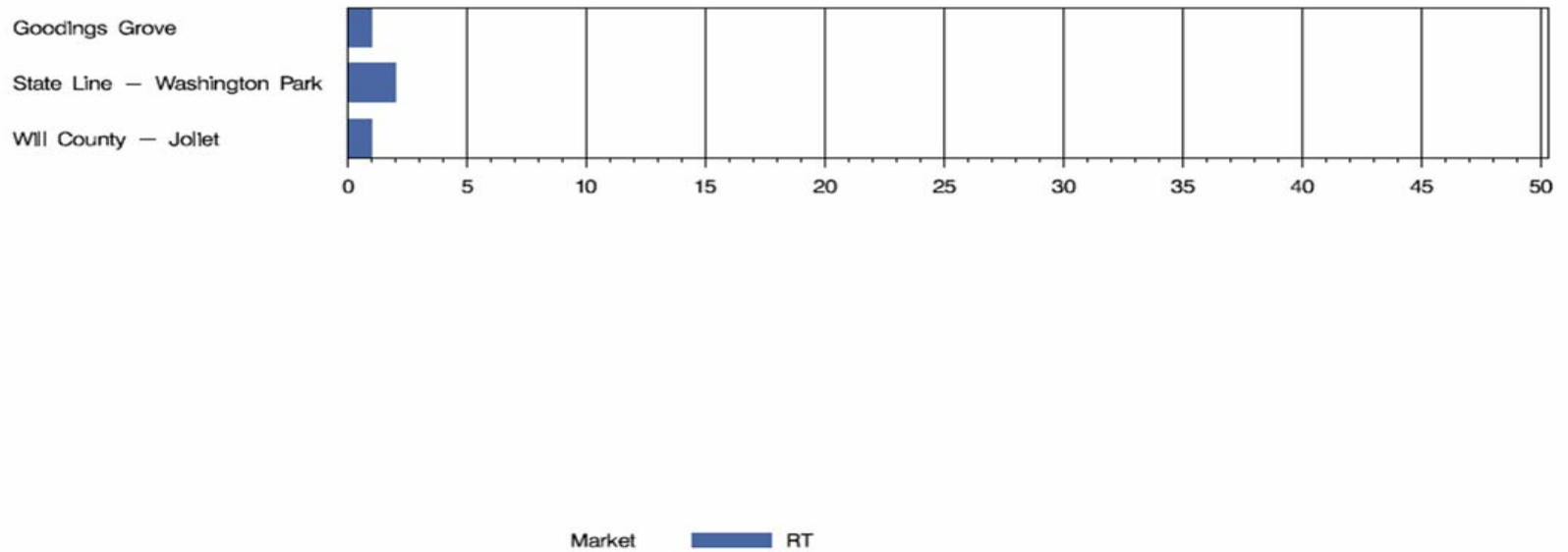
## ComEd real-time and day-ahead hourly average on-peak LMP January 2006



## ComEd real-time and day-ahead hourly zonal LMP January 2006



## COMED Congestion Event Hours by Facility January 2006



## Offer Capping for January 2006:

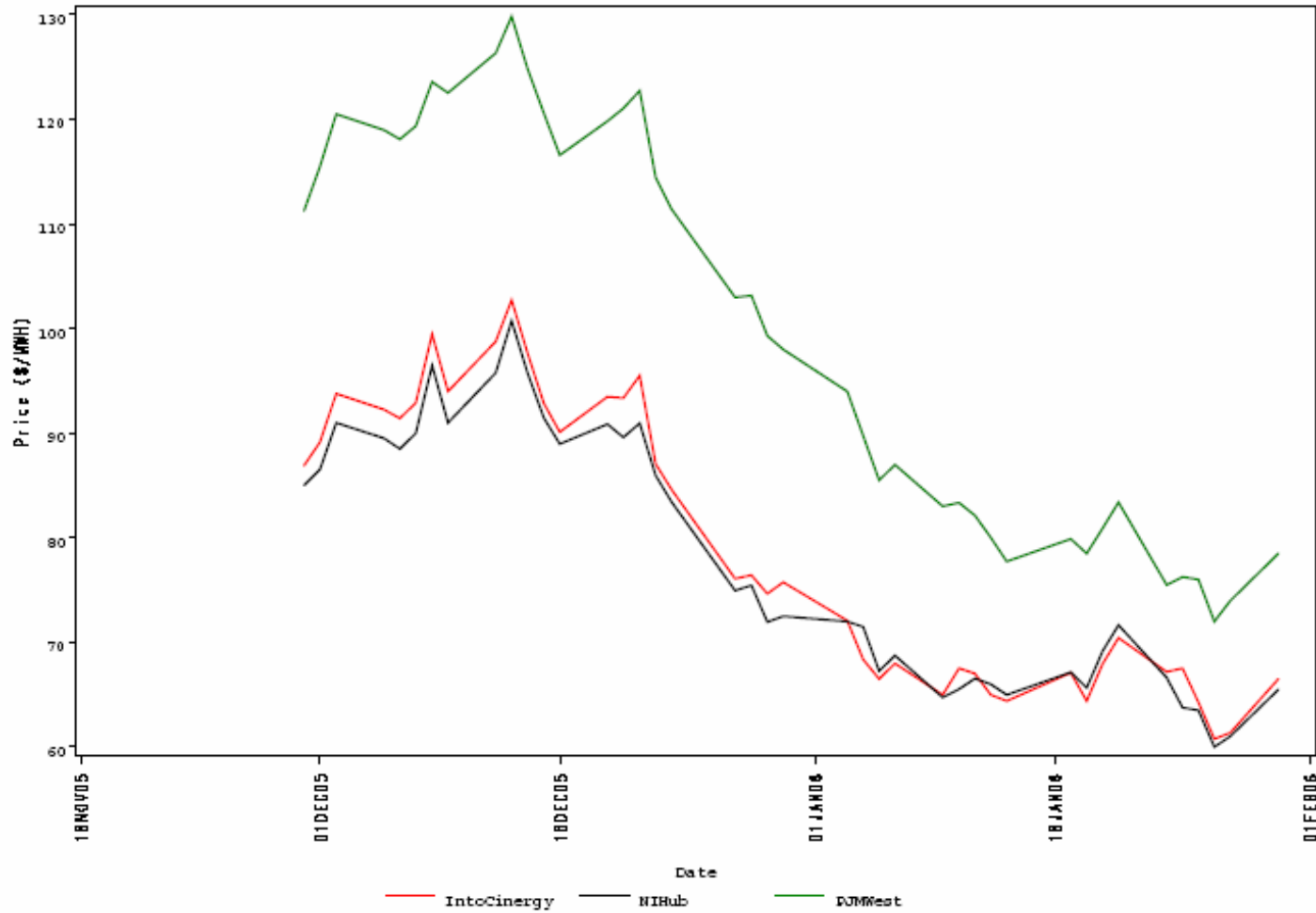
- There were 4 event hours of Real-Time congestion in ComEd in January.
  - There was no offer capping associated with this congestion.
- There were 0 event hours of Day-Ahead congestion in ComEd in January.
  - There was no offer capping associated with this congestion.

There were no TLRs called for the ComEd Control Area in January.

- Forward prices for the February 2006 contract showed varying spreads during January.
  - Spreads reflect traders' expectations about future prices.
  - The maximum NIHub-CINergy spread was \$3.15 per MWh during January.
  - The minimum NIHub-CINergy spread was -\$3.75 per MWh during January.
  - The average NIHub-CINergy spread was \$0.00 per MWh during January.
  - The NIHub-CINergy spread was -\$1.00 per MWh on the final trading day for the February 2006 contract.

### Cinergy, NIHub and PJM West Forward Prices

contract=Feb 2006





- Forward prices for the March/April 2006 contract showed varying spreads during January.
  - Spreads reflect traders' expectations about future prices.
  - The maximum NIHub-CINergy spread was \$0.35 per MWh during January.
  - The minimum NIHub-CINergy spread was -\$6.45 per MWh during January.
  - The average NIHub-CINergy spread was -\$3.44 per MWh during January.
  - The NIHub-CINergy spread was -\$2.05 per MWh on the final trading day of January for the March/April 2006 contract.

### Cinergy, NIHub and PJM West Forward Prices

contract=Mar\_Apr2006

