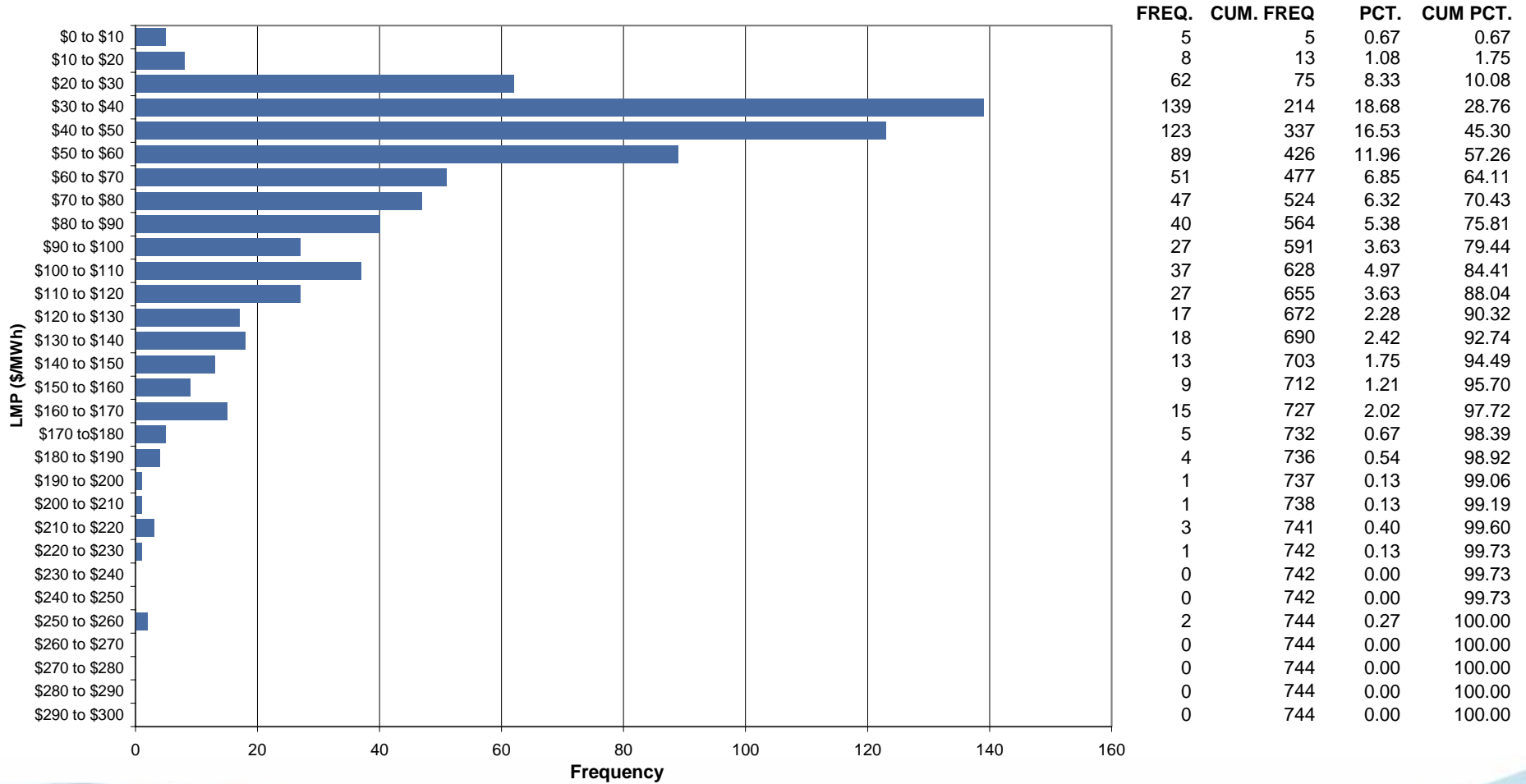




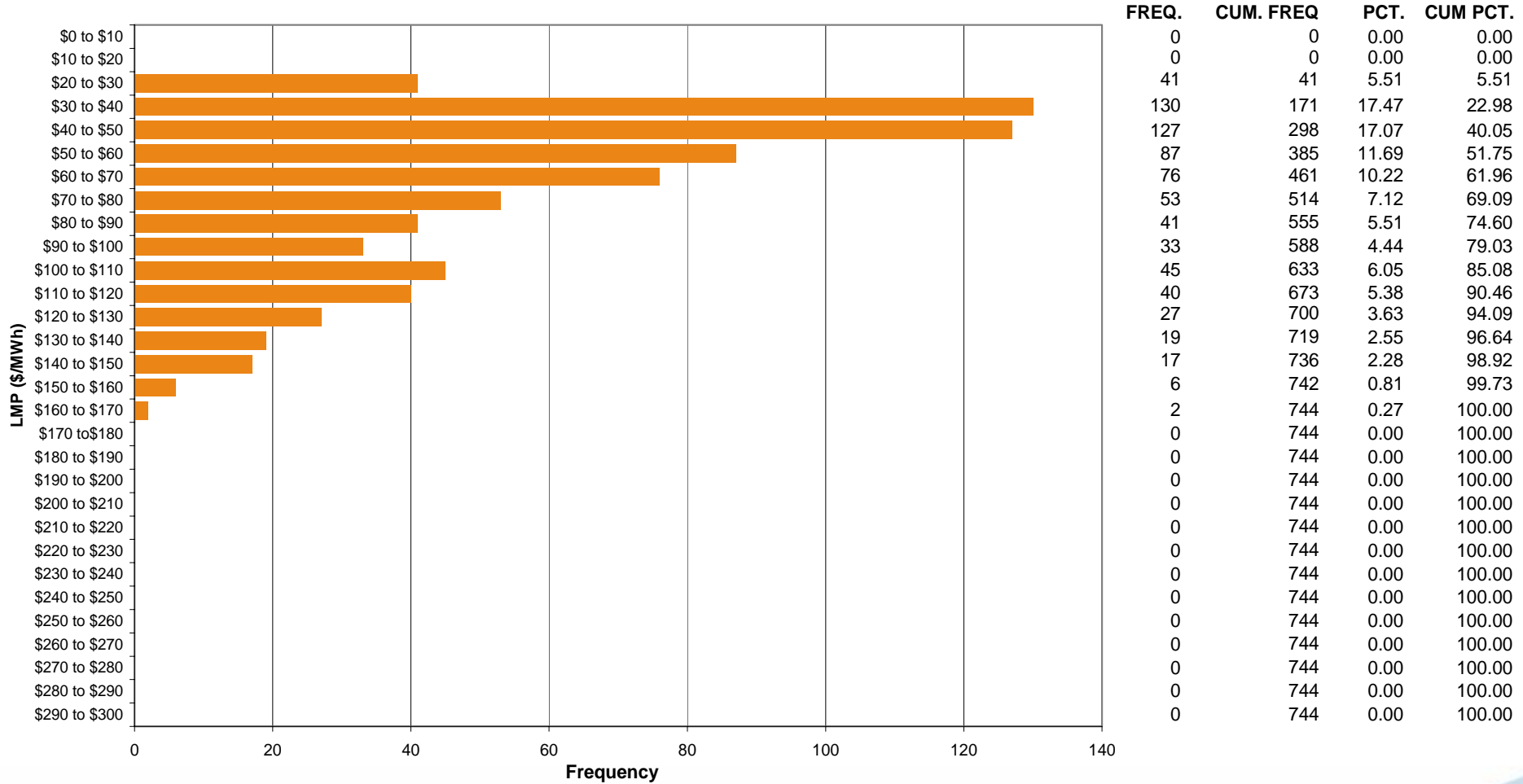
AEP Control Zone Market Monitoring Report for December 2005

Market Monitoring Unit
January 2006

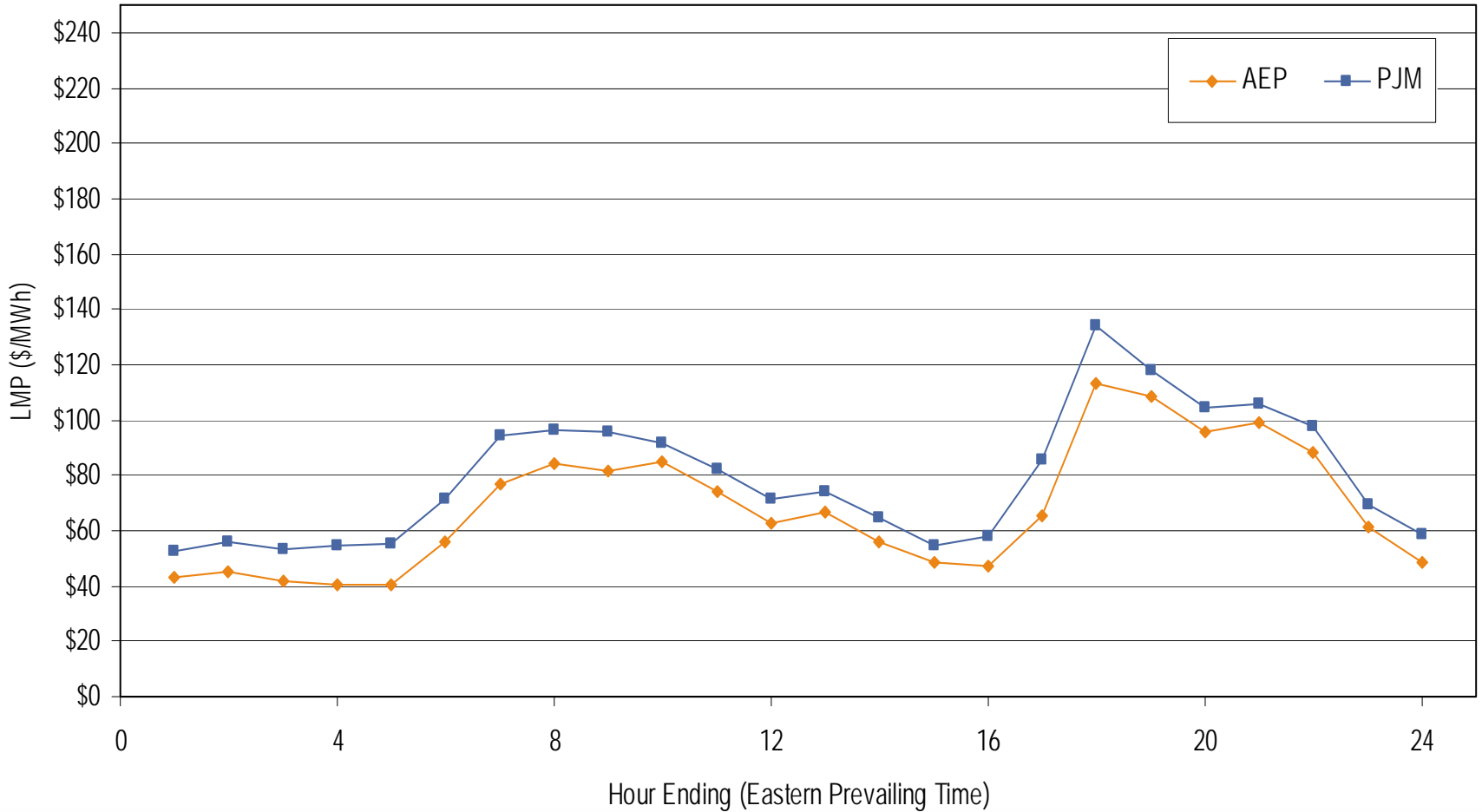
Frequency Distribution by Hours of AEP Real-time LMP December 2005



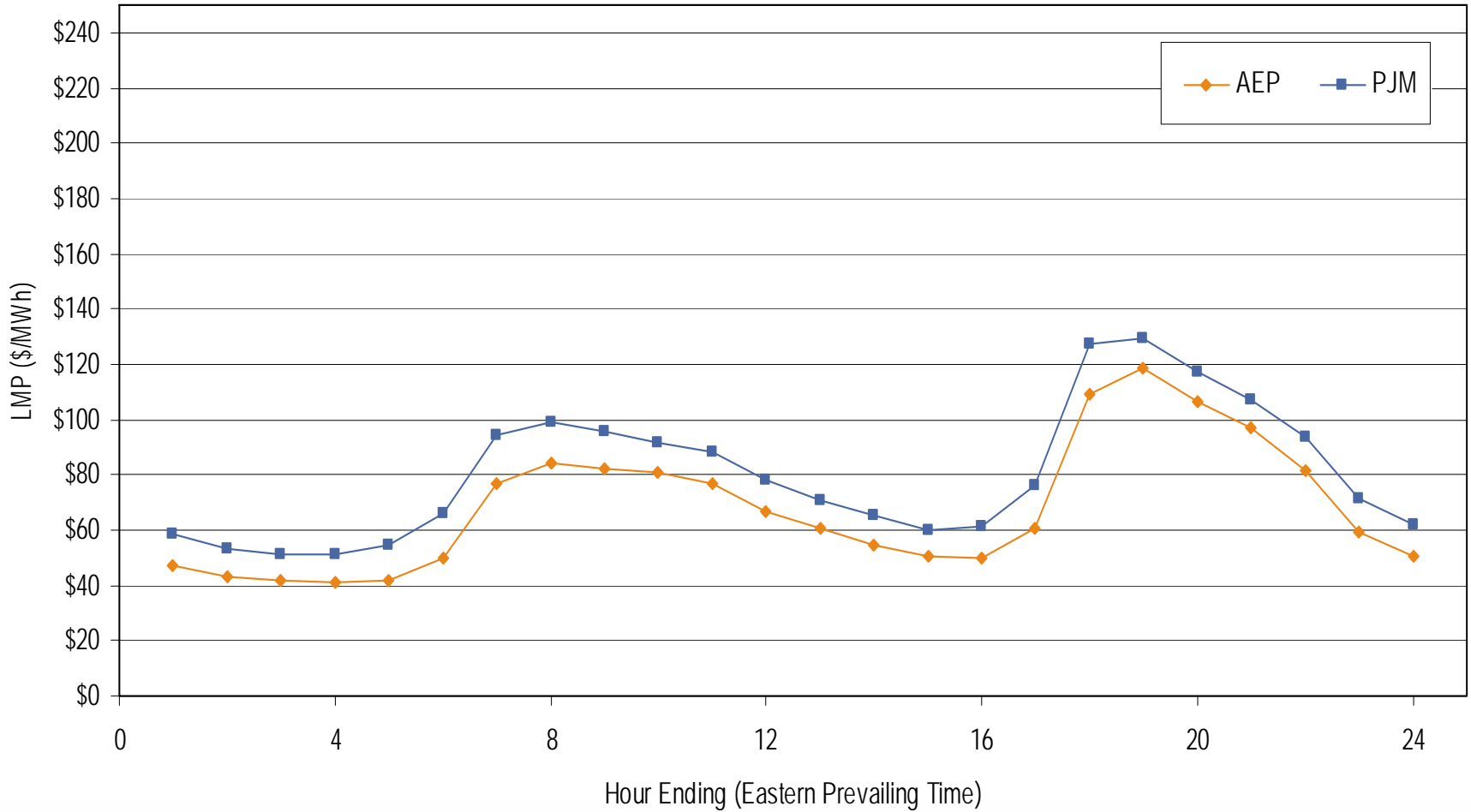
Frequency Distribution by Hours of AEP Day-ahead LMP December 2005



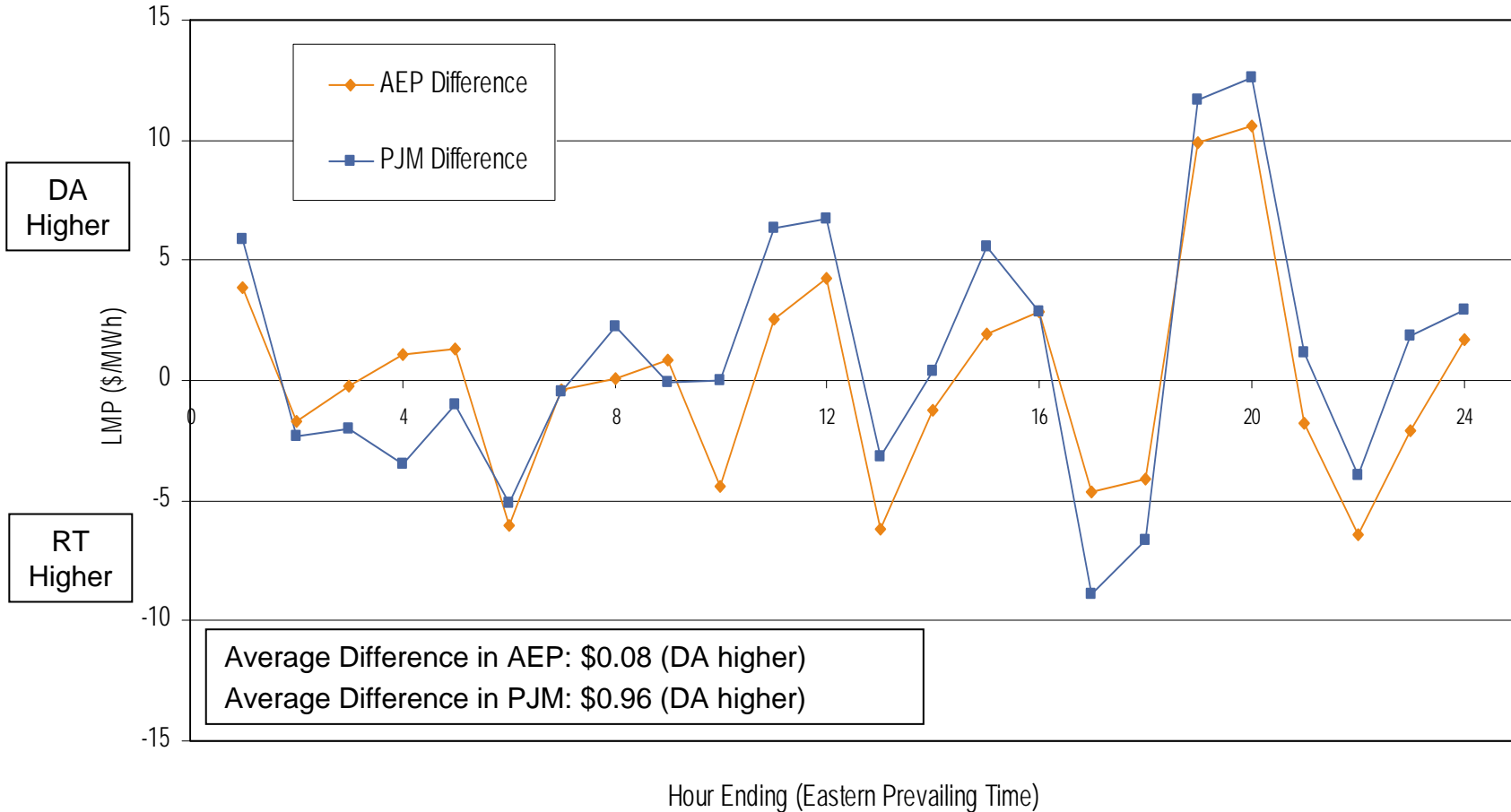
Average Hourly Real-Time LMP December 2005



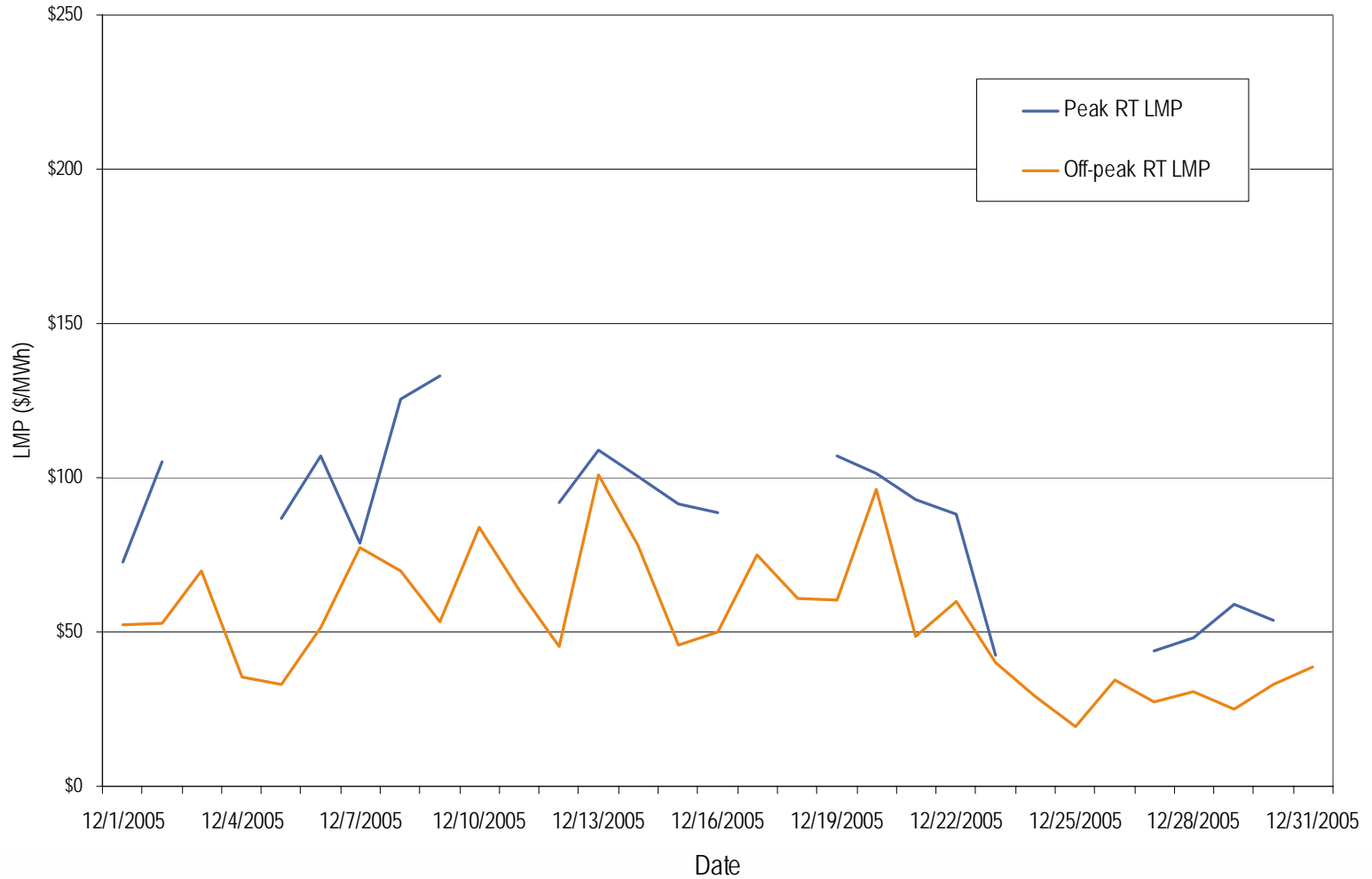
**Average Hourly Day-Ahead LMP
December 2005**



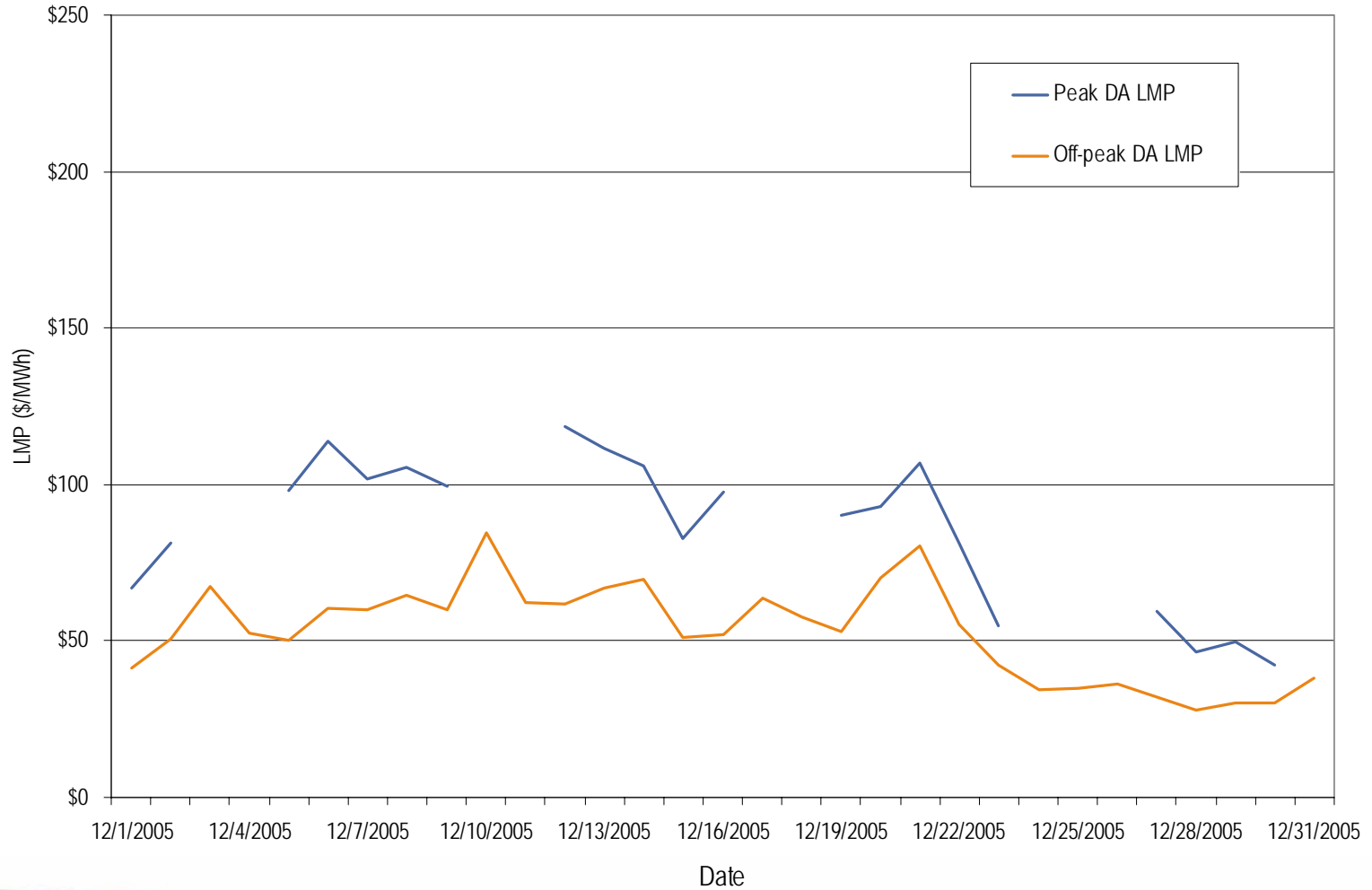
Average Hourly Difference of Day-Ahead and Real-Time LMPs December 2005



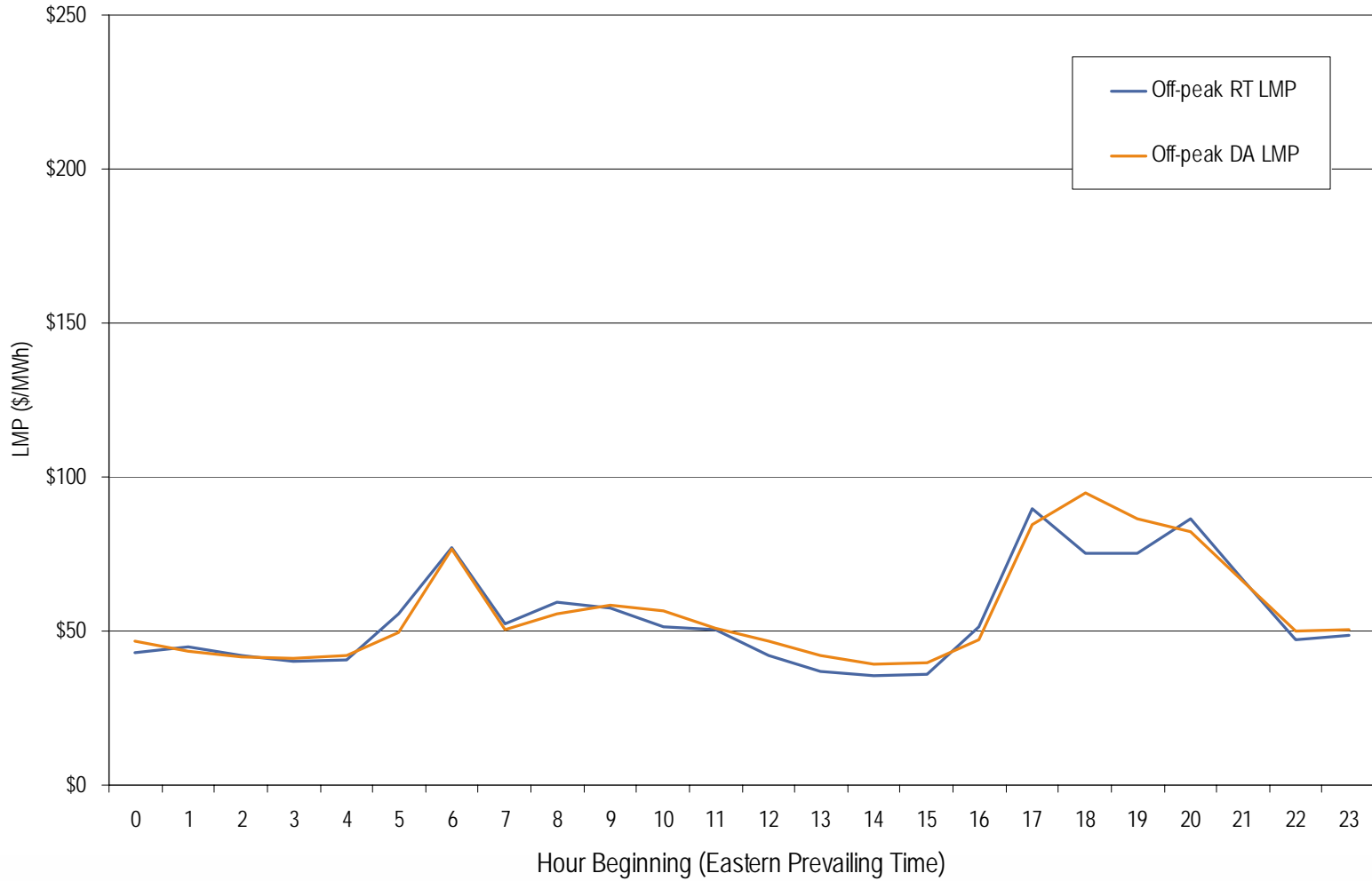
AEP real-time peak and off-peak average daily LMP December 2005



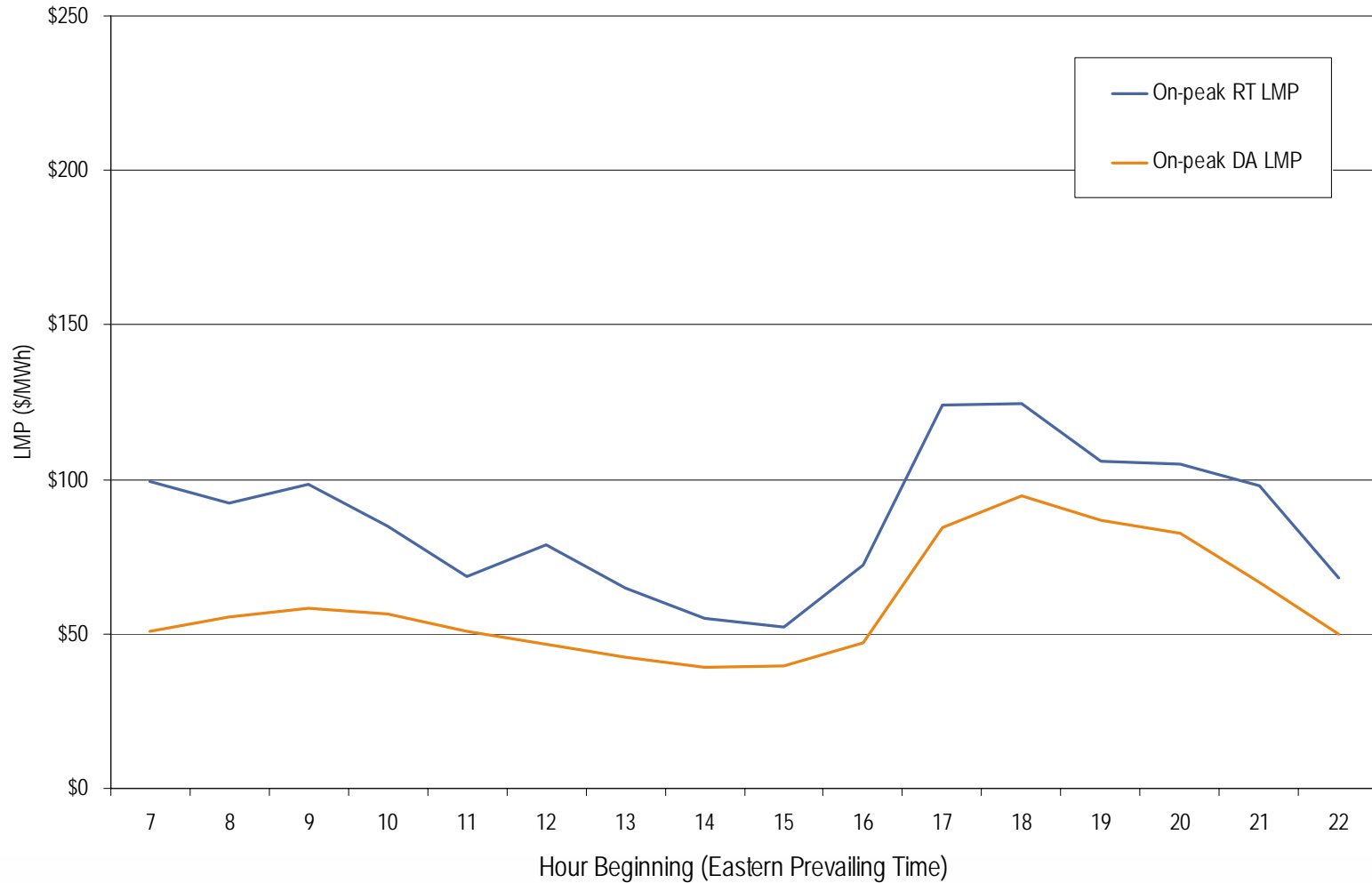
AEP day-ahead peak and off-peak average daily LMP December 2005



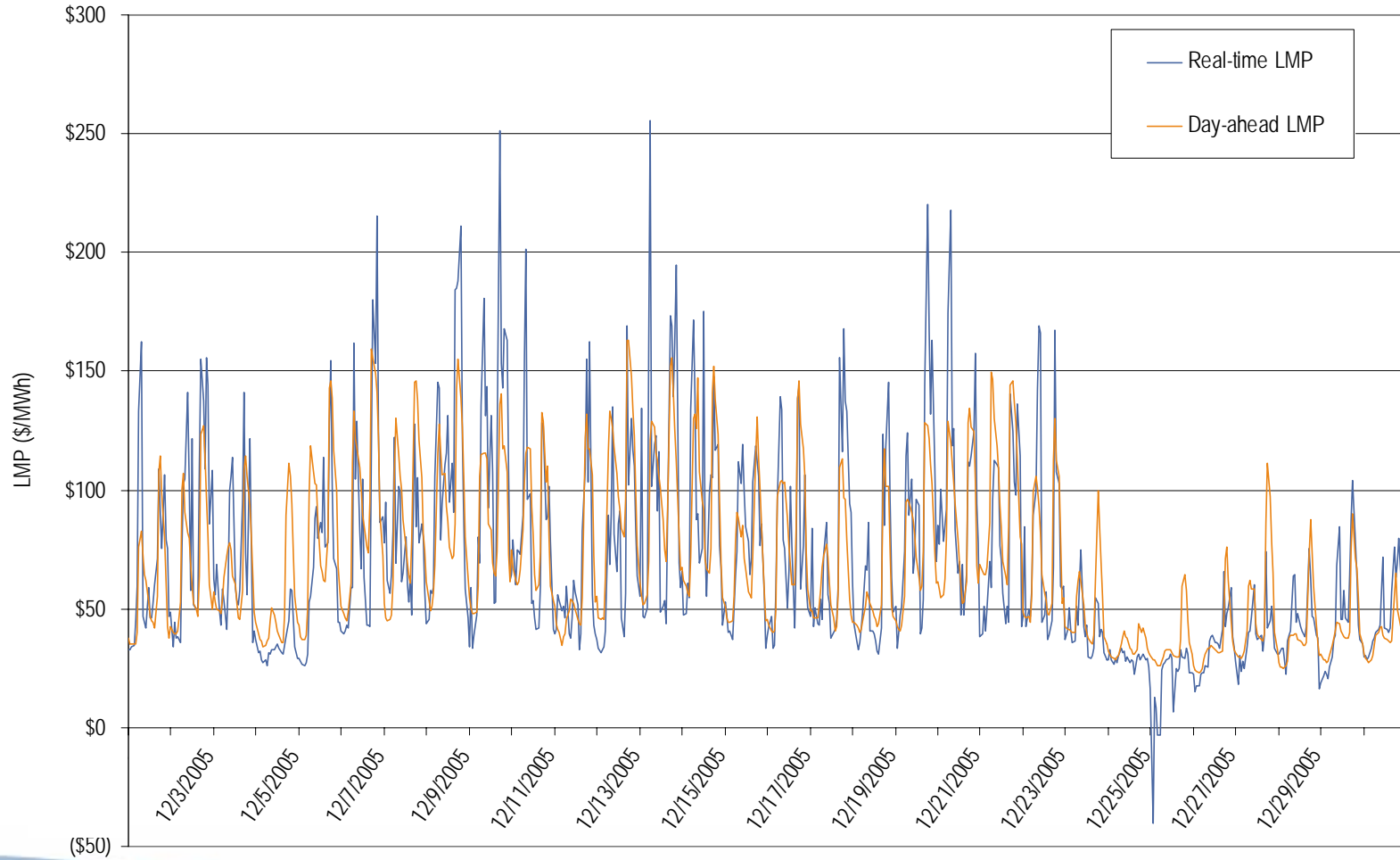
AEP real-time and day-ahead hourly average off-peak LMP December 2005



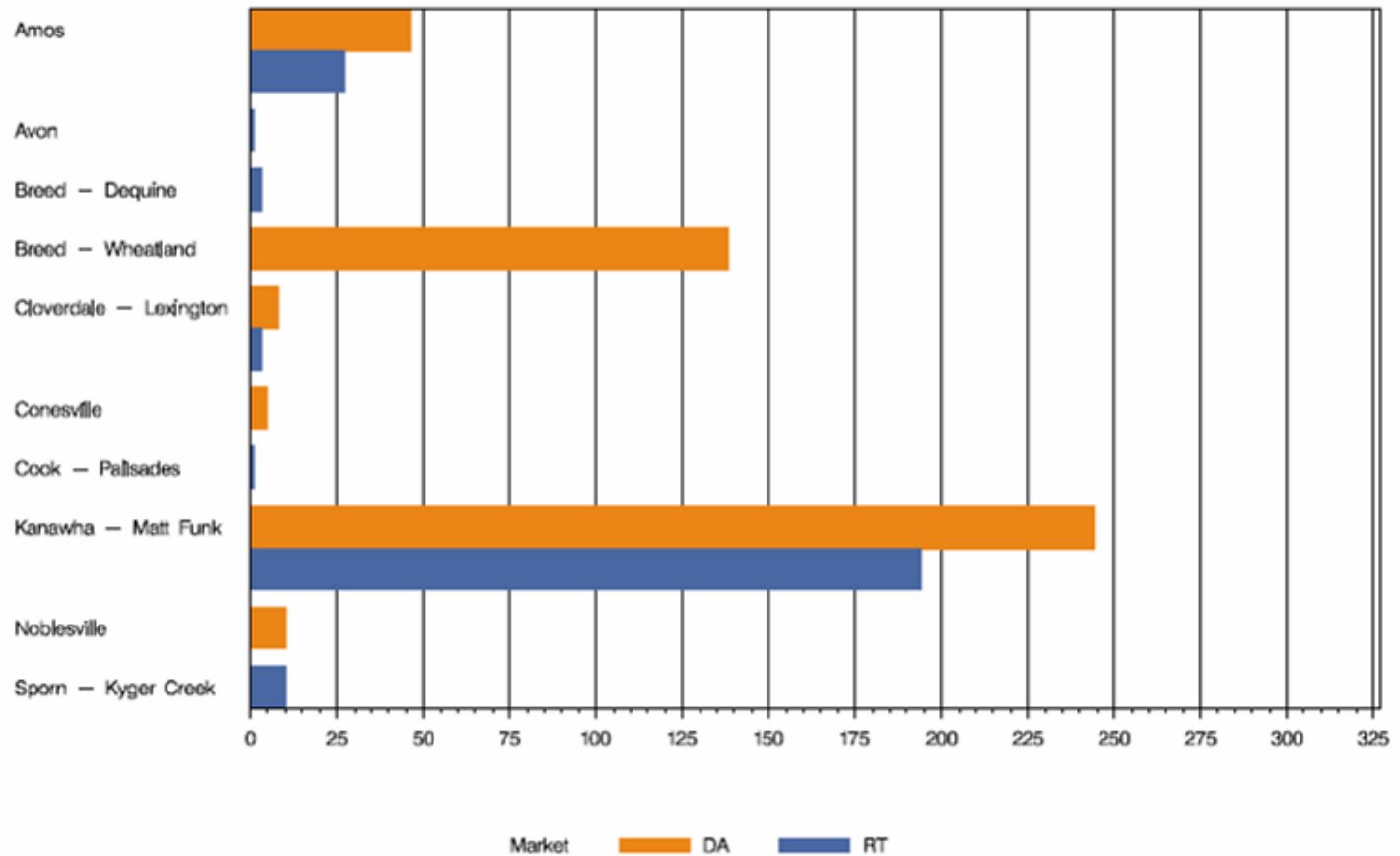
AEP real-time and day-ahead hourly average on-peak LMP December 2005



AEP real-time and day-ahead hourly zonal LMP December 2005



AEP Congestion Event Hours by Facility December 2005



Offer Capping for December 2005:

- There were 239 event hours of Real-Time congestion in AEP in January.
 - There were 194 offer capped unit hours associated with this congestion.
- There were 451 event hours of Day-Ahead congestion in AEP in December.
 - There were 24 offer capped unit hours associated with this congestion.