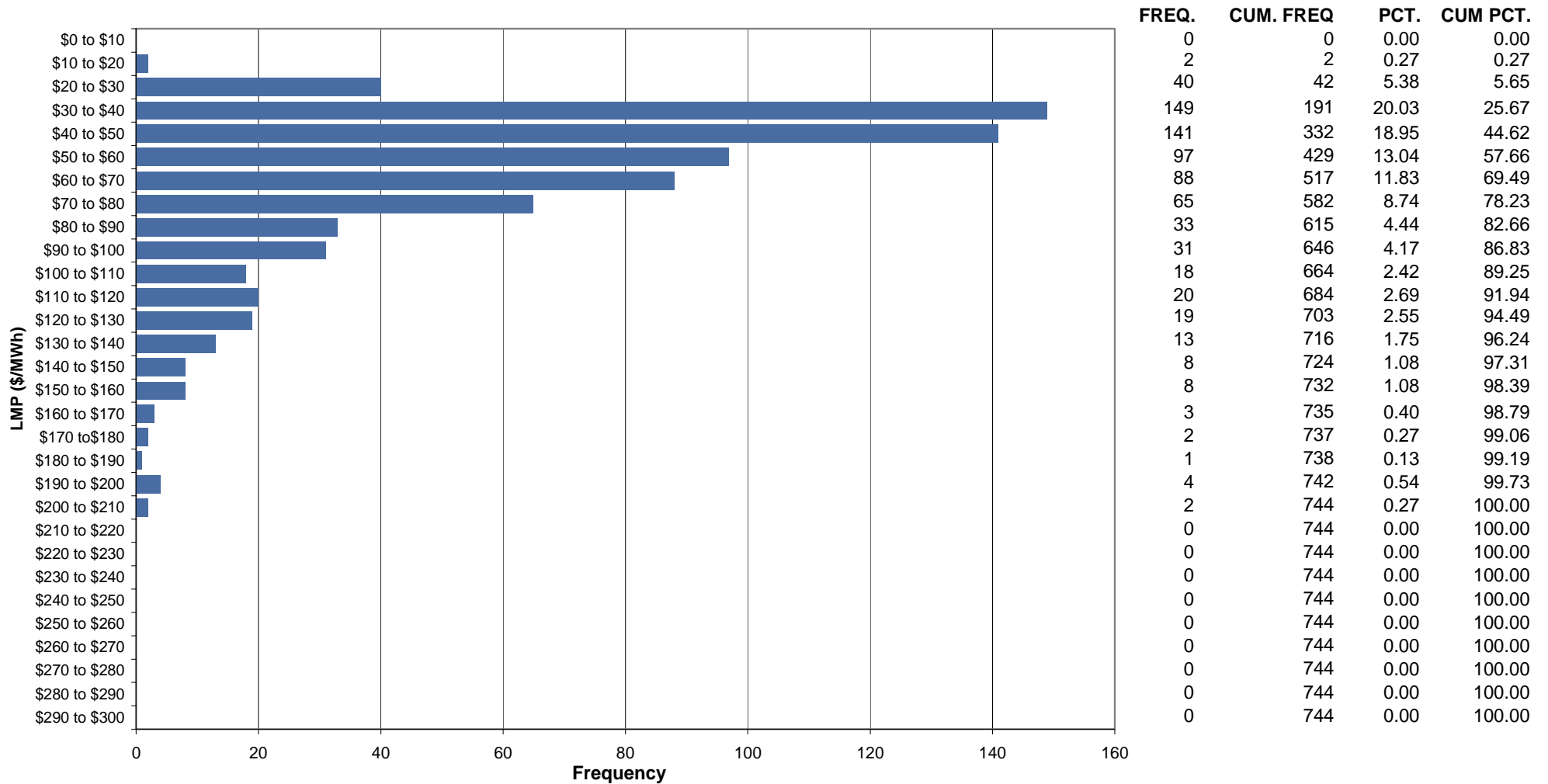




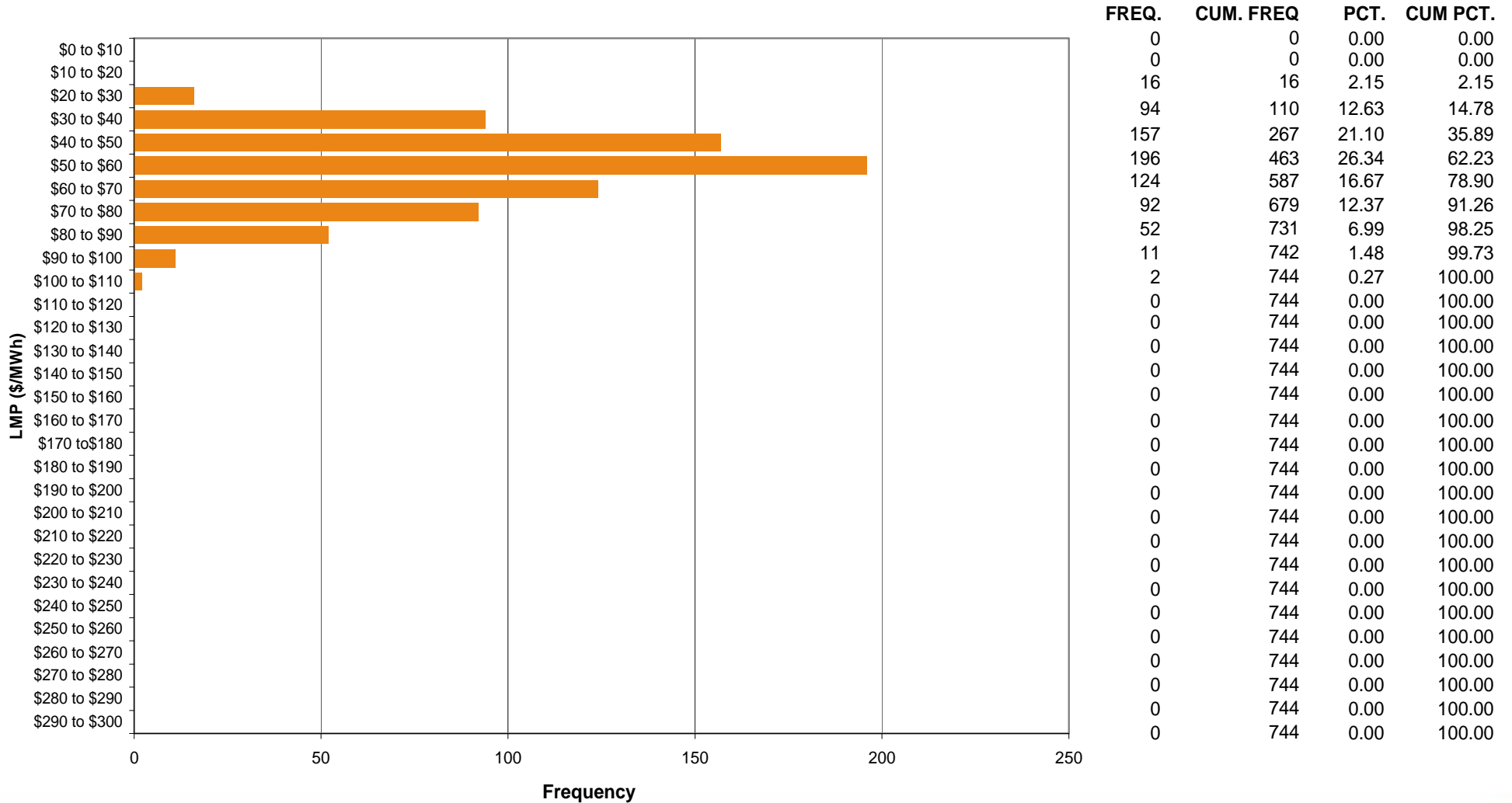
Dominion Control Zone Market Monitoring Report for March 2006

Market Monitoring Unit
April 2006

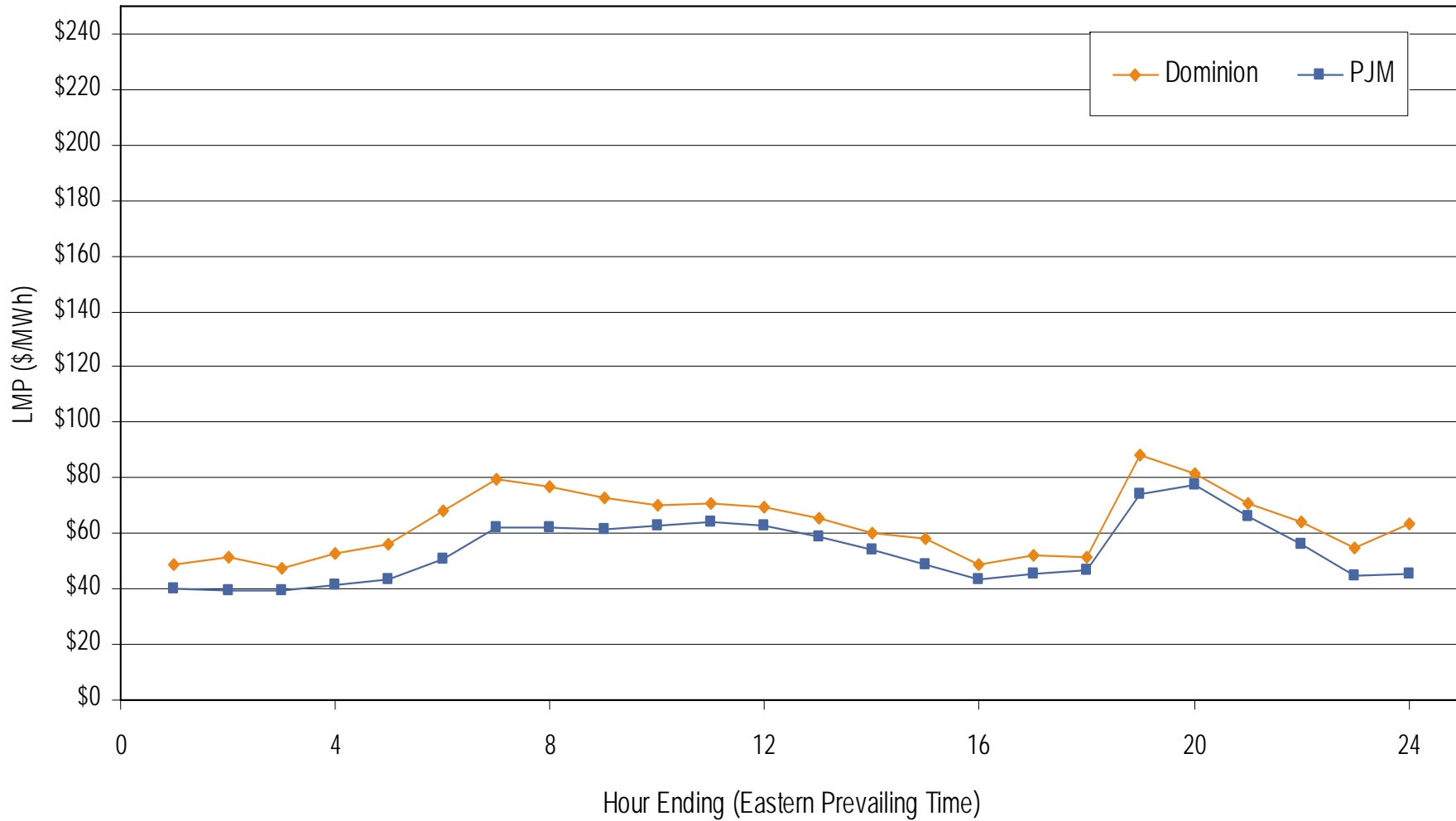
Frequency distribution by hours of Dominion real-time LMP March 2006



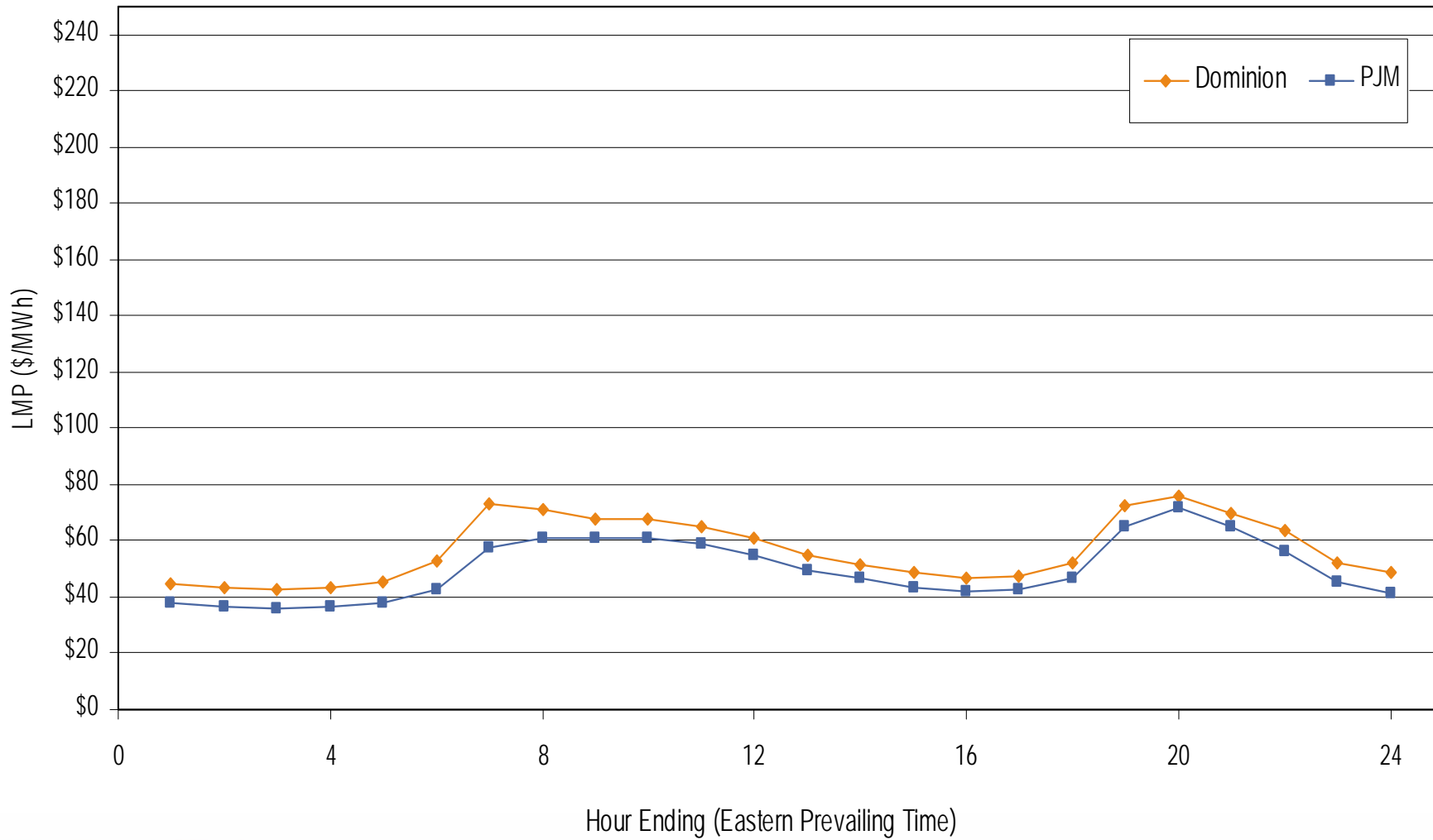
Frequency distribution by hours of Dominion day-ahead LMP March 2006



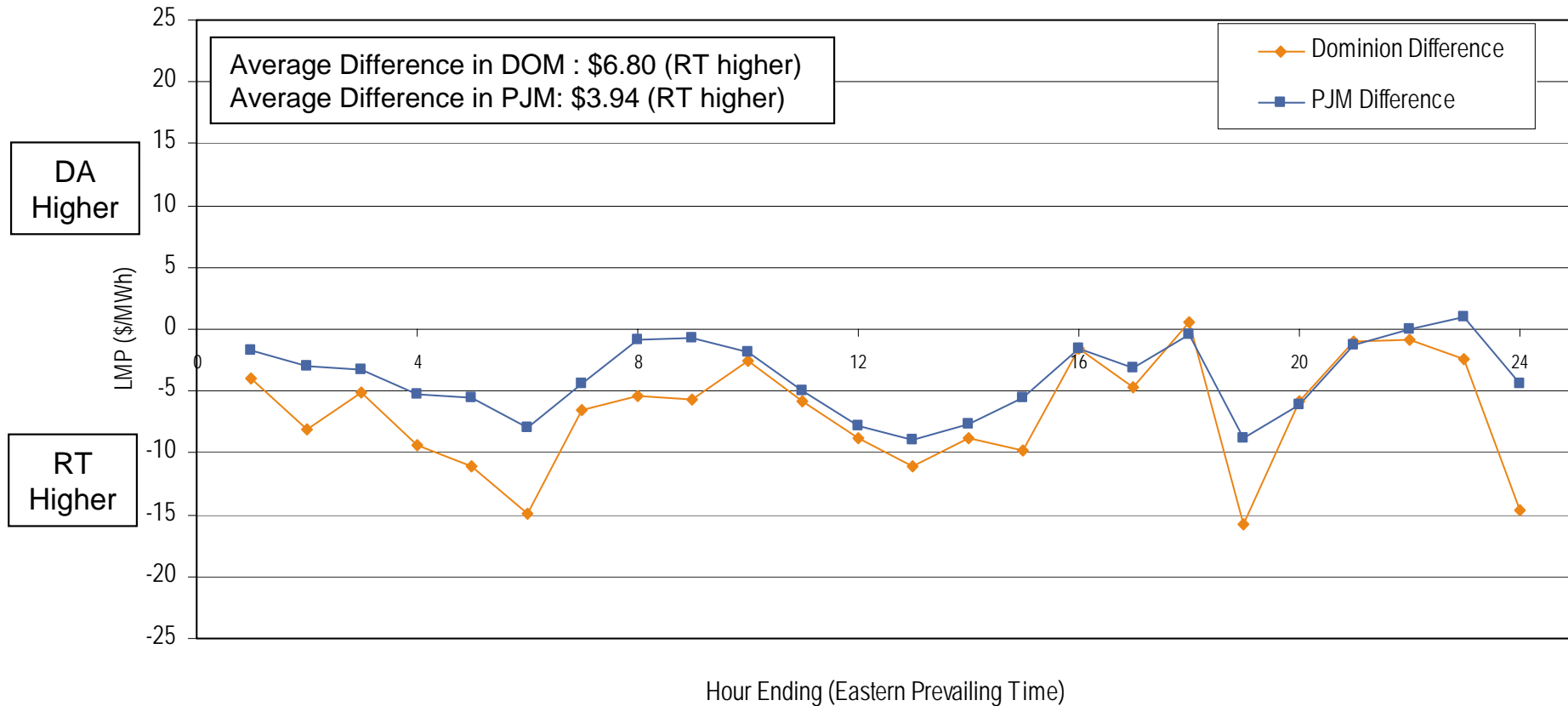
Average hourly real-time LMP
March 2006



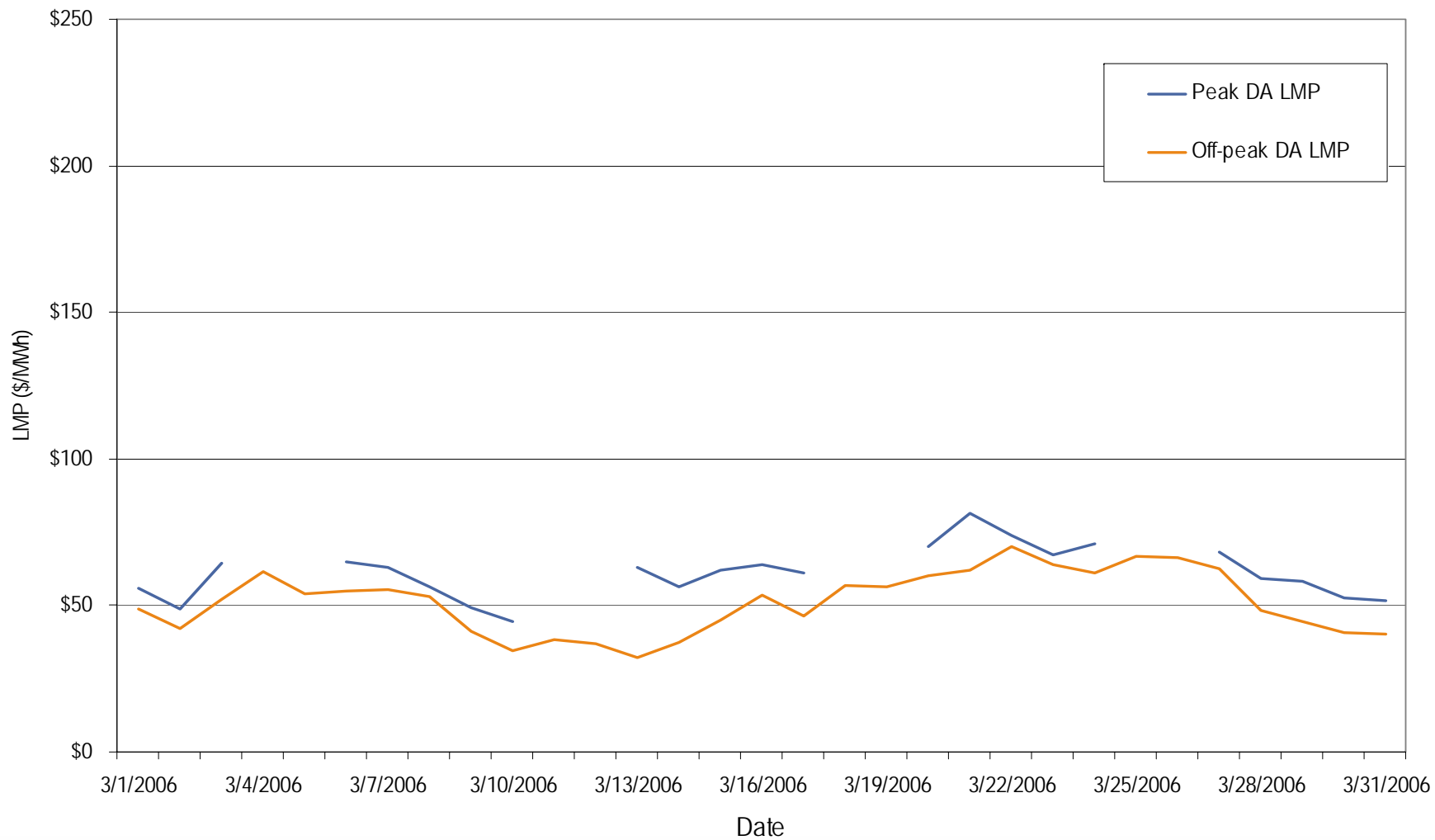
**Average hourly day-ahead LMP
March 2006**



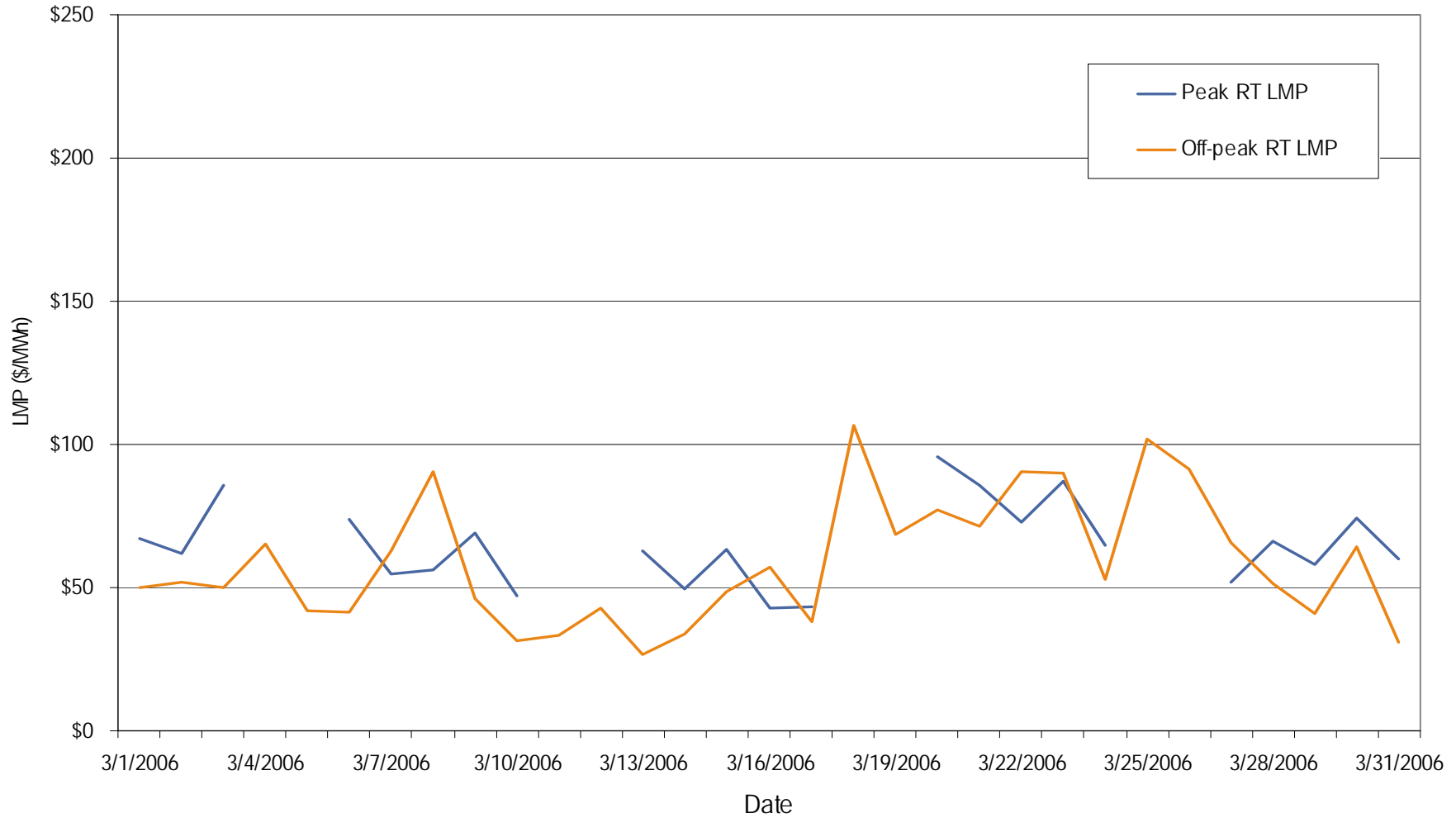
**Average hourly difference of day-ahead and real-time LMPs
March 2006**



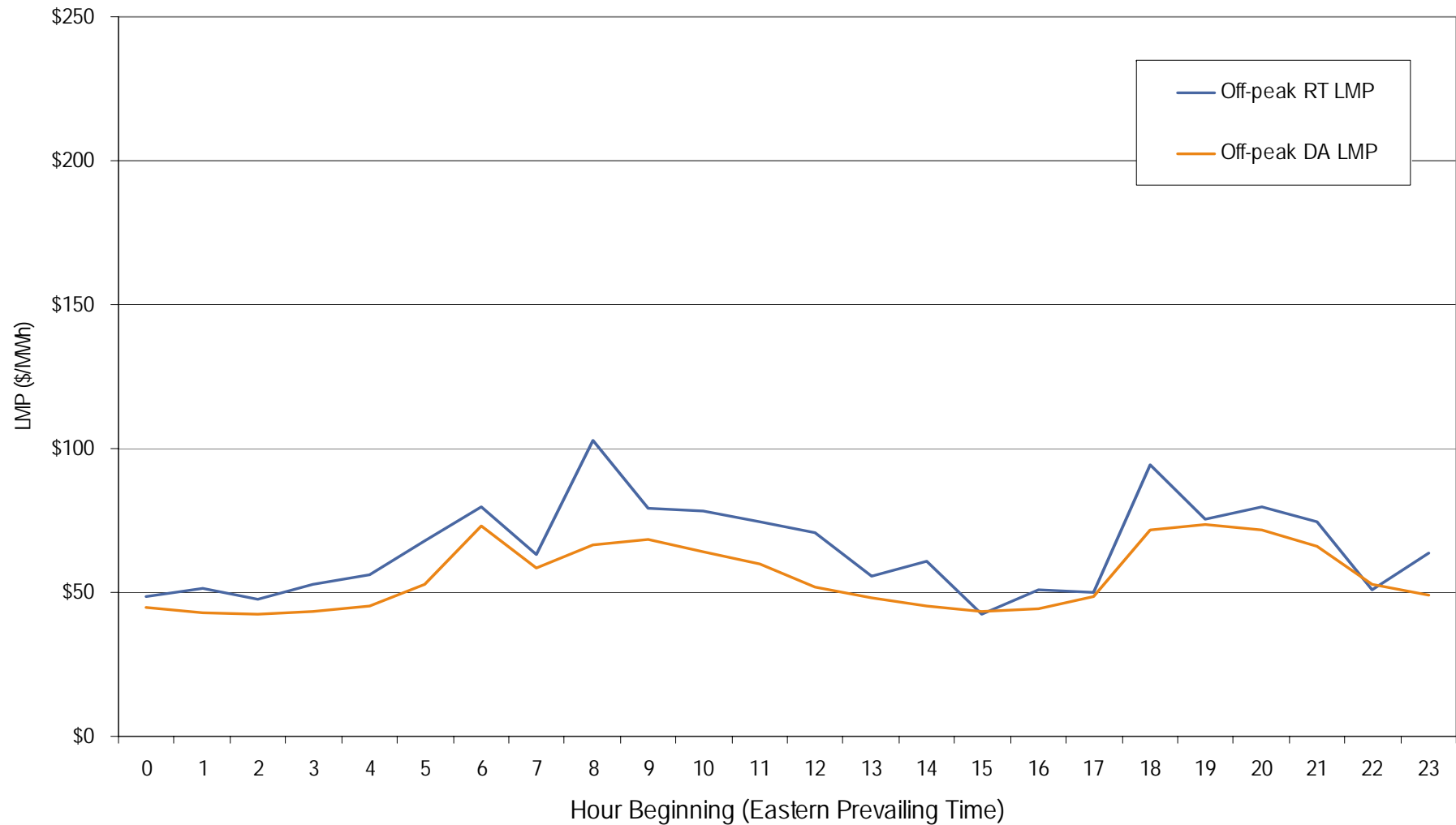
Dominion day-ahead peak and off-peak average daily LMP March 2006



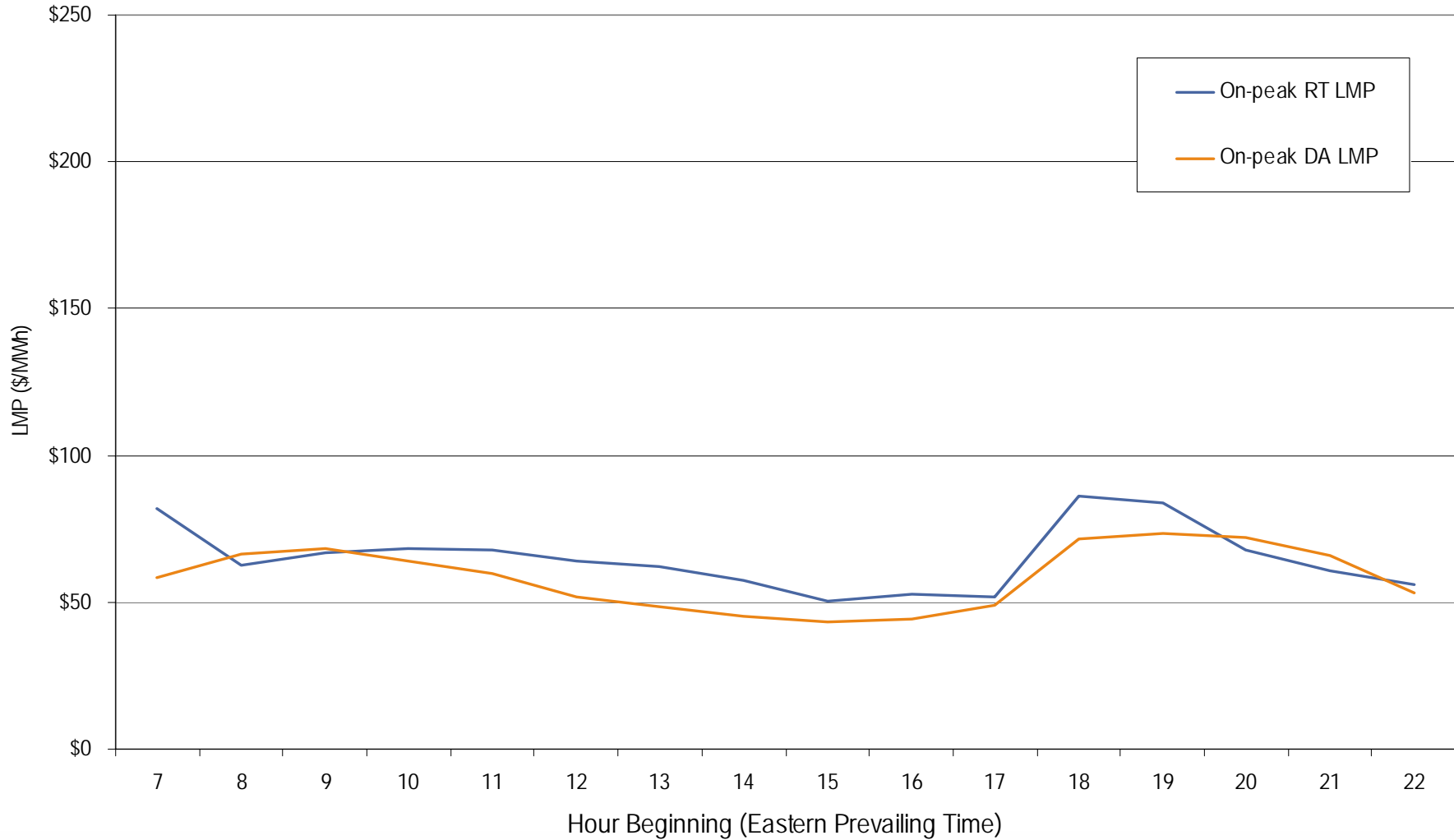
**Dominion real-time peak and off-peak average daily LMP
March 2006**



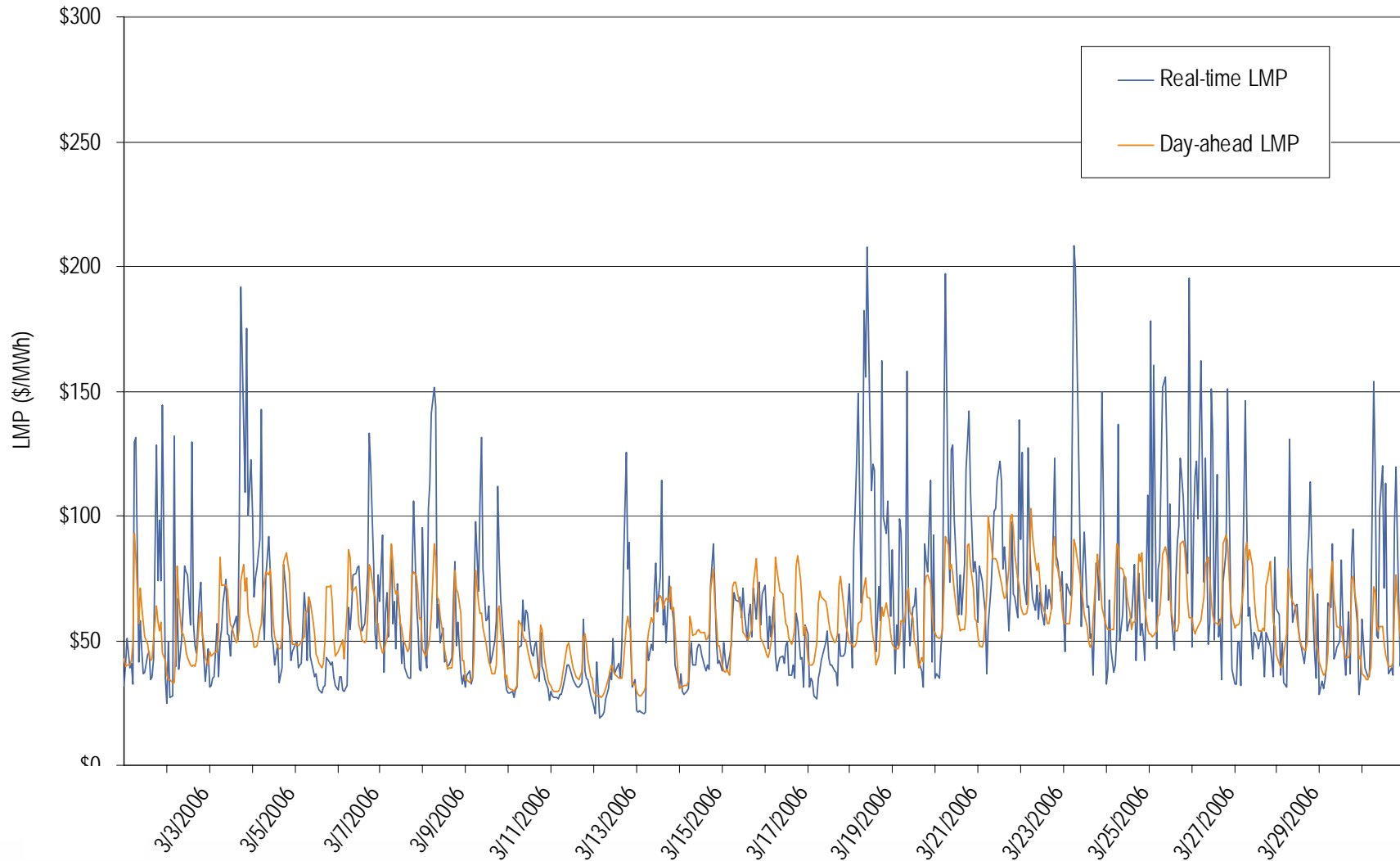
**Dominion real-time and day-ahead hourly average off-peak LMP
March 2006**



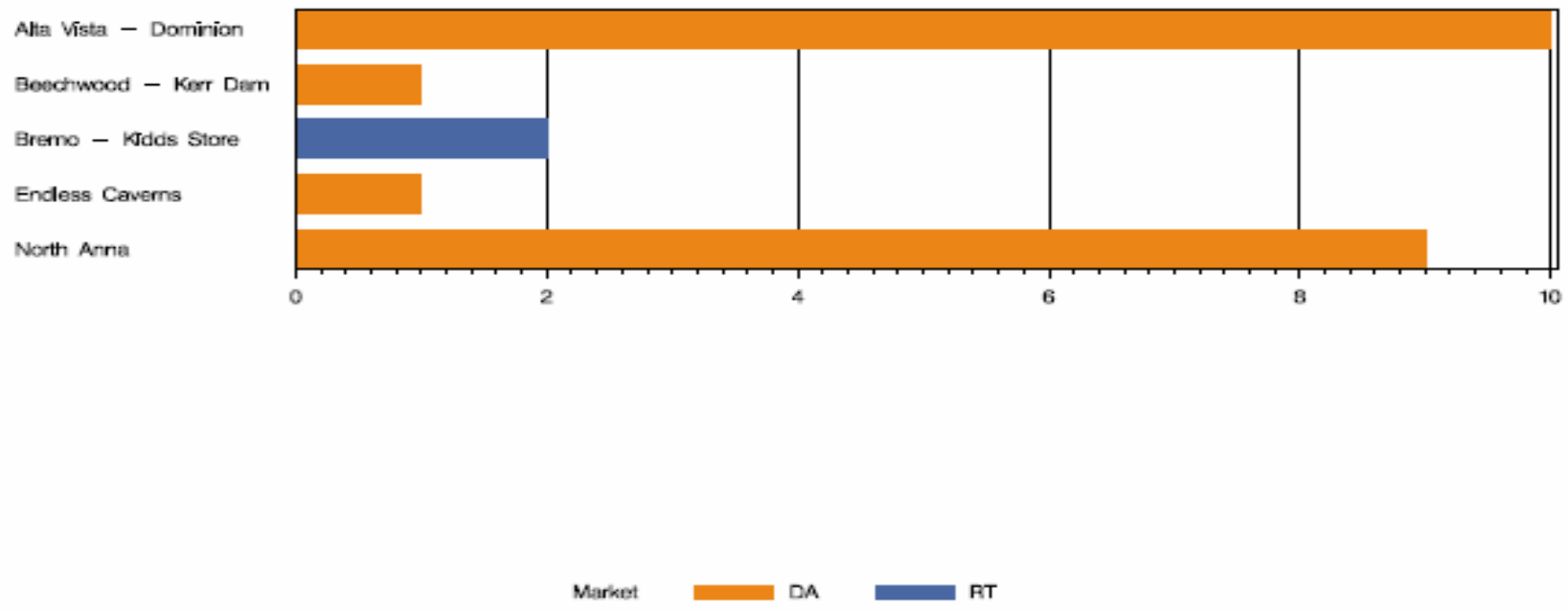
**Dominion real-time and day-ahead hourly average on-peak LMP
March 2006**



Dominion real-time and day-ahead hourly zonal LMP March 2006



DOM Congestion Event Hours by Facility
March 2006



Offer Capping for March 2006:

- There were 2 event hours of Real-Time congestion in Dominion in March.
 - There were 42 offer capped unit hours in Real-Time.
- There were 25 event hours of Day-Ahead congestion in Dominion in February.
 - There were 34 offer capped unit hours in Day-Ahead.