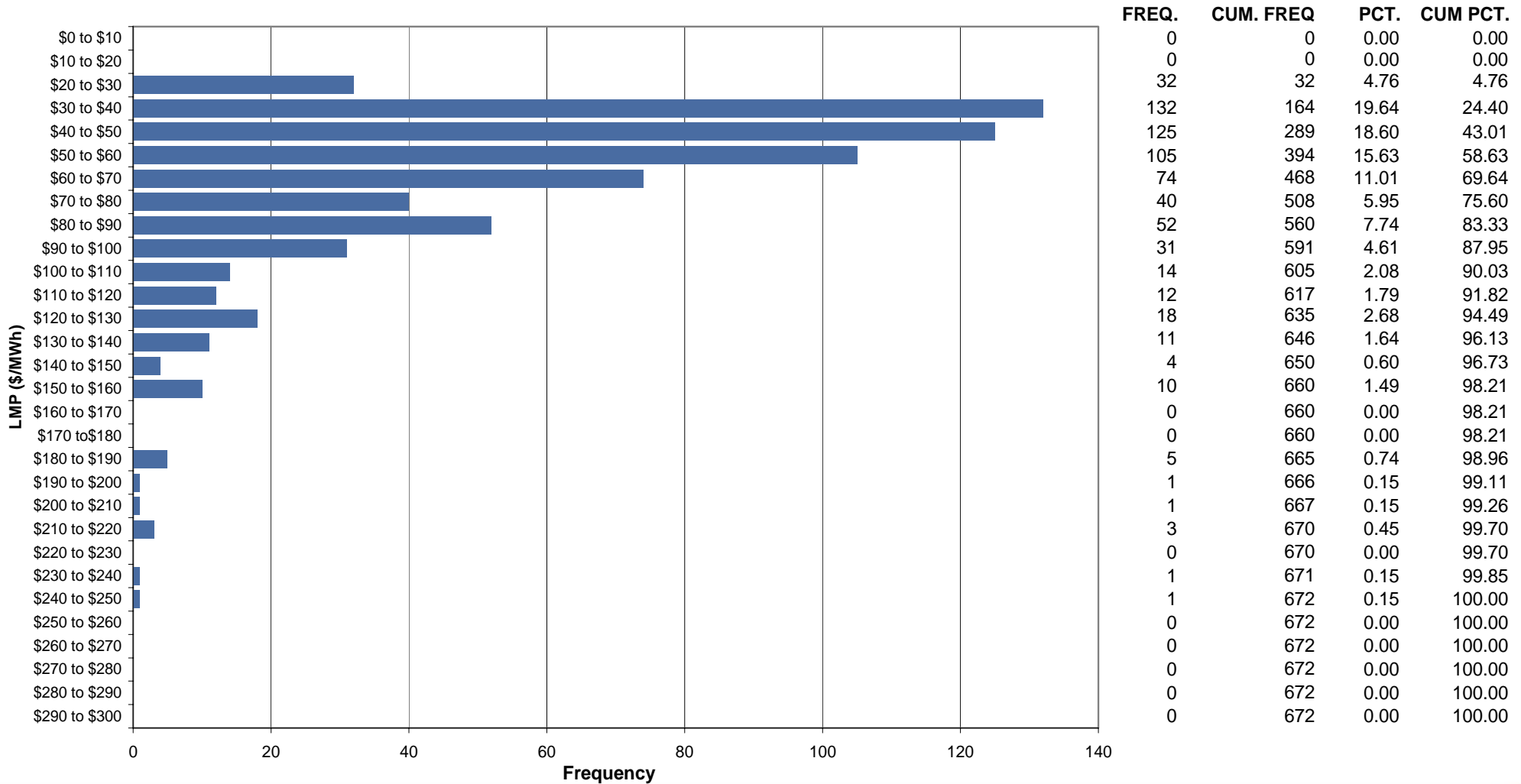




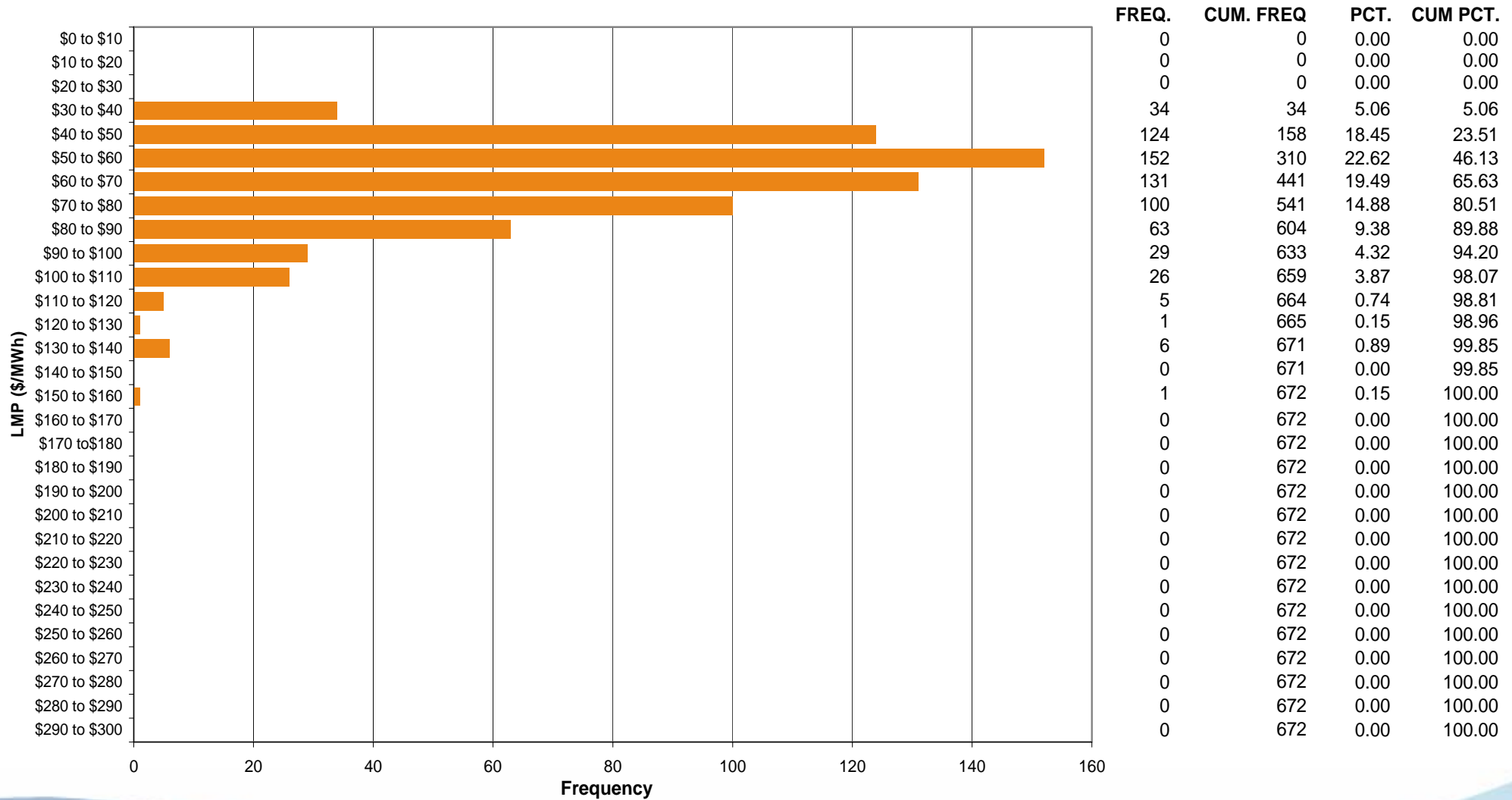
# Dominion Control Zone Market Monitoring Report for February 2006

Market Monitoring Unit  
March 2006

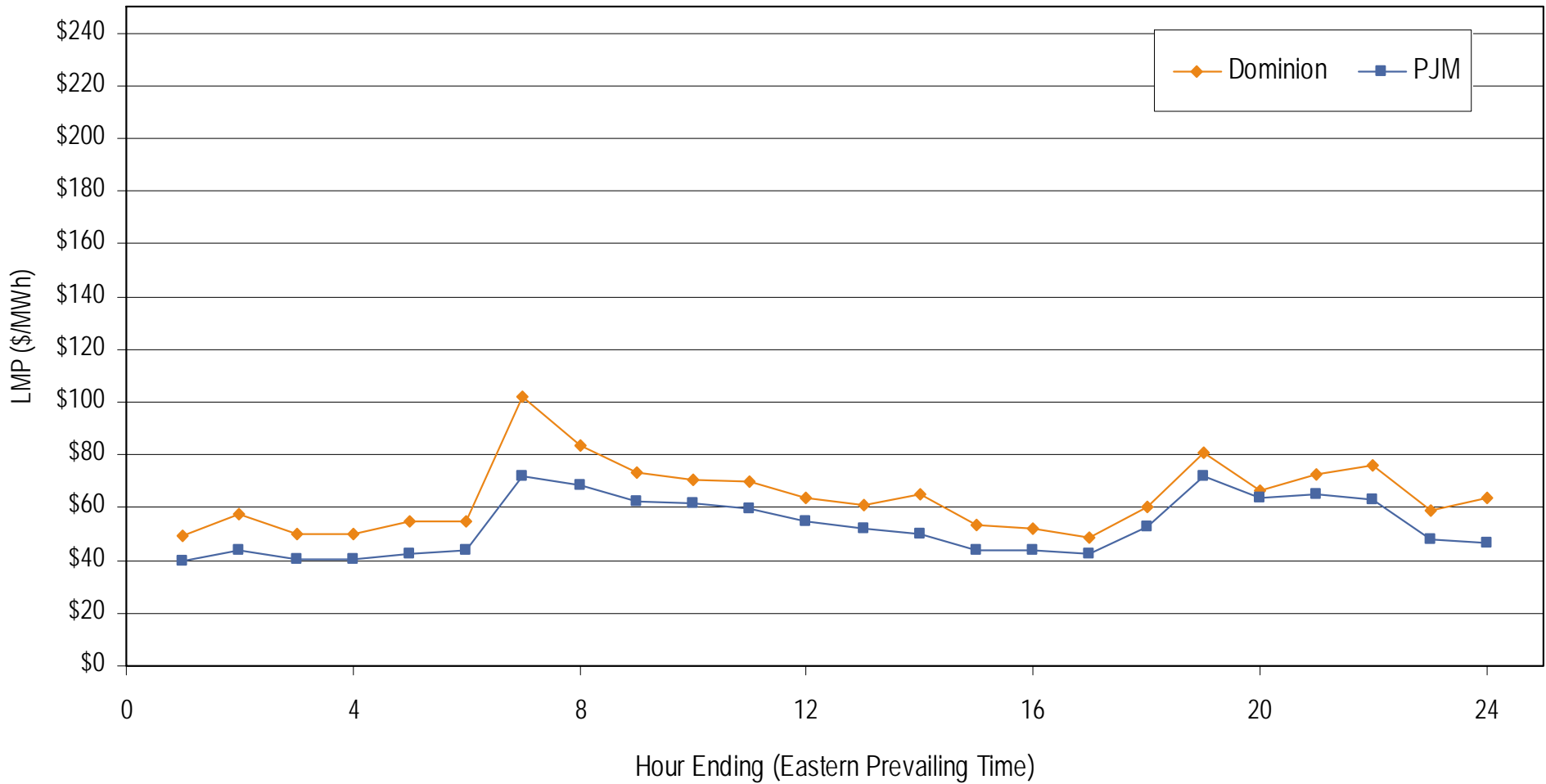
### Frequency Distribution by Hours of Dominion Real-time LMP February 2006



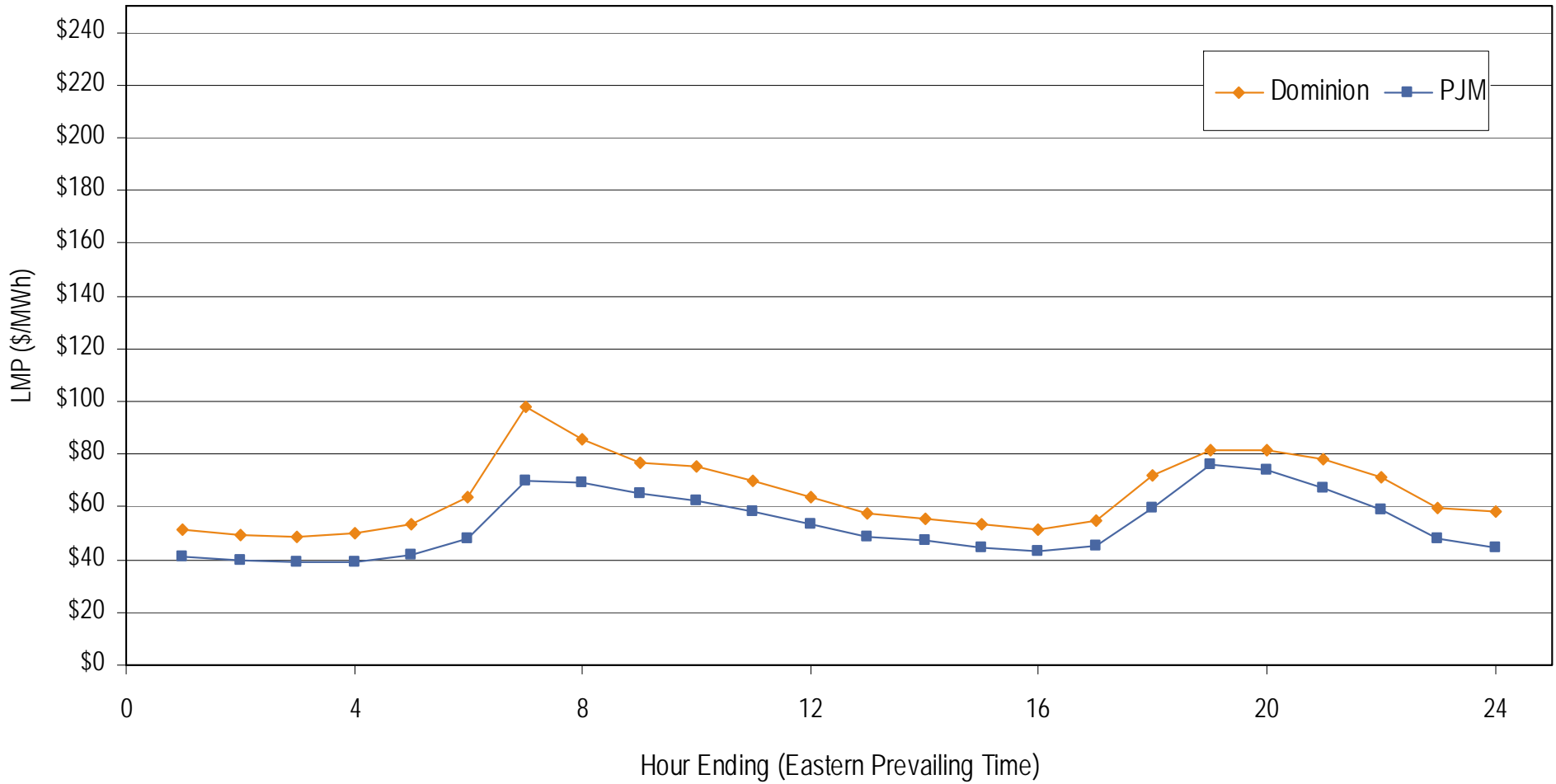
## Frequency Distribution by Hours of Dominion Day-ahead LMP February 2006



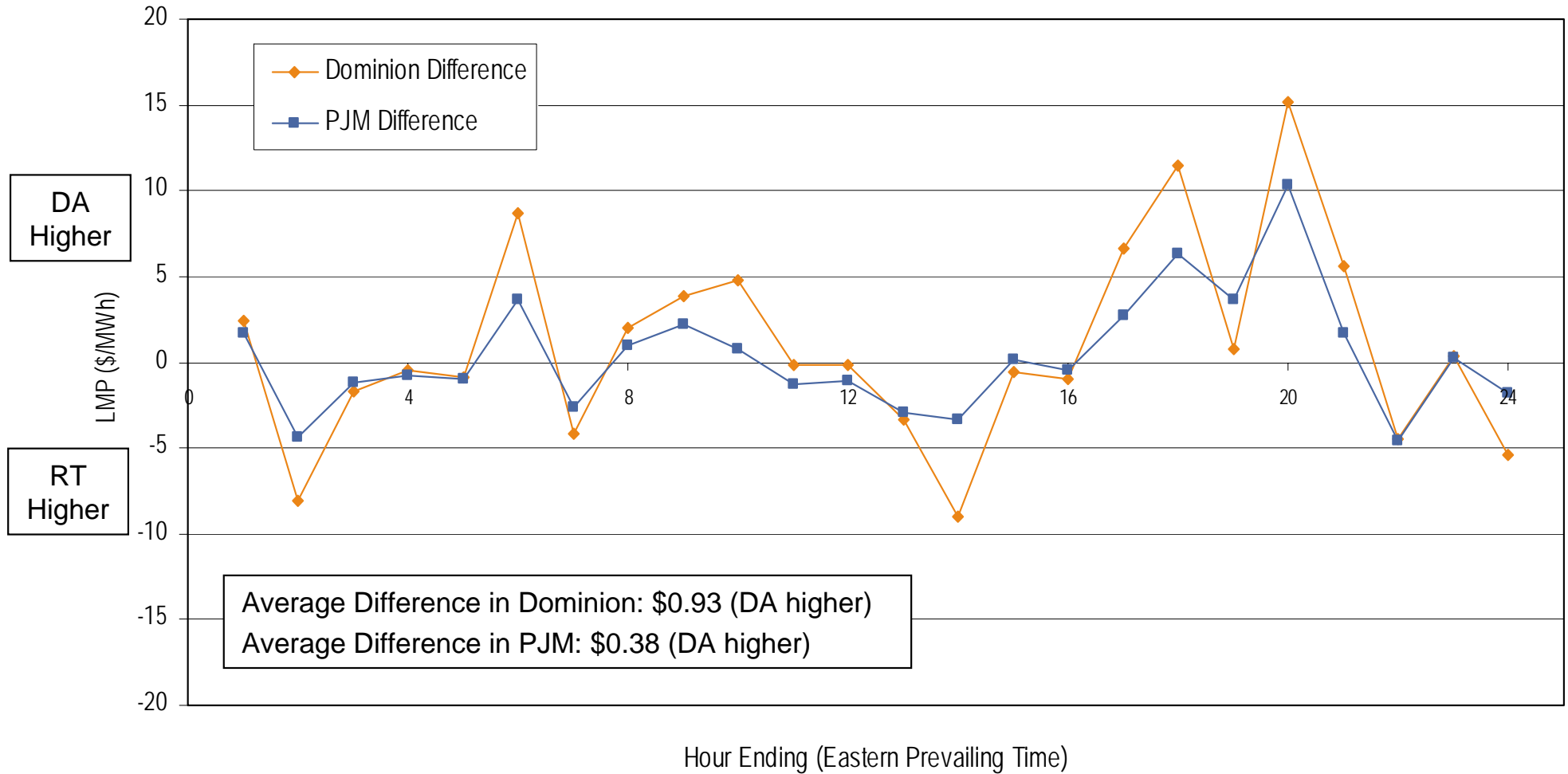
### Average Hourly Real-Time LMP February 2006



**Average Hourly Day-Ahead LMP  
February 2006**



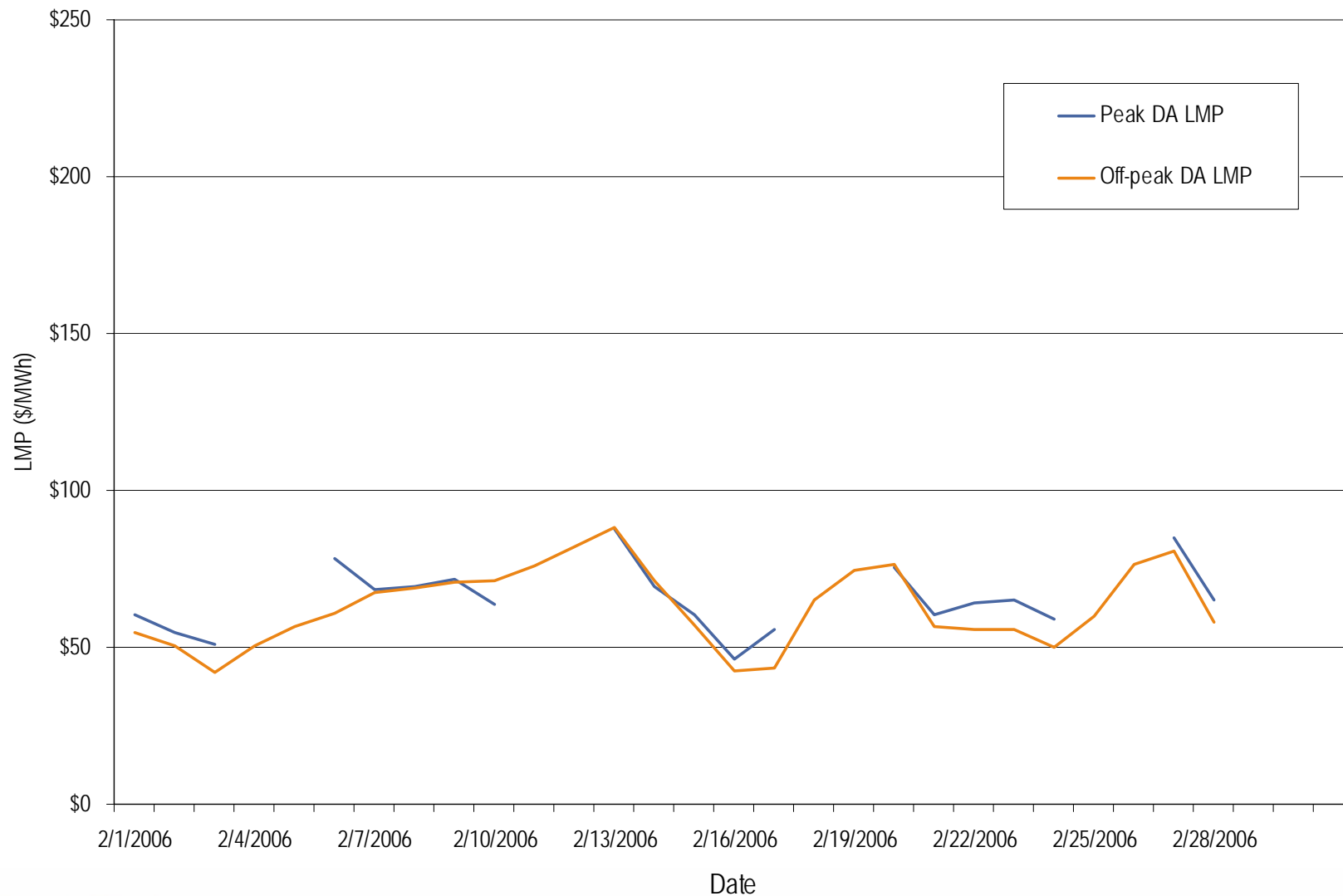
## Average Hourly Difference of Day-Ahead and Real-Time LMPs February 2006



## Dominion real-time peak and off-peak average daily LMP February 2006

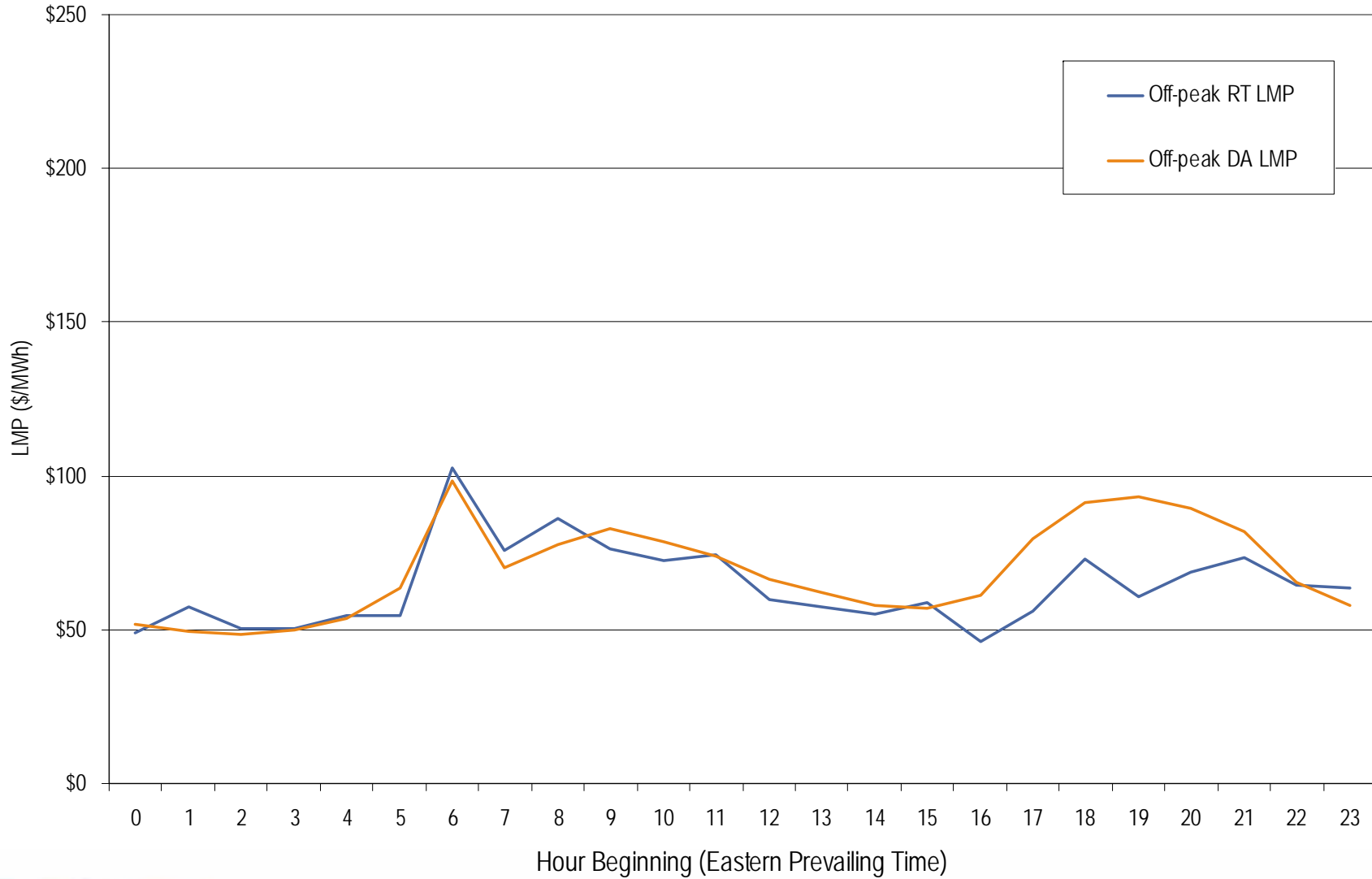


## Dominion day-ahead peak and off-peak average daily LMP February 2006

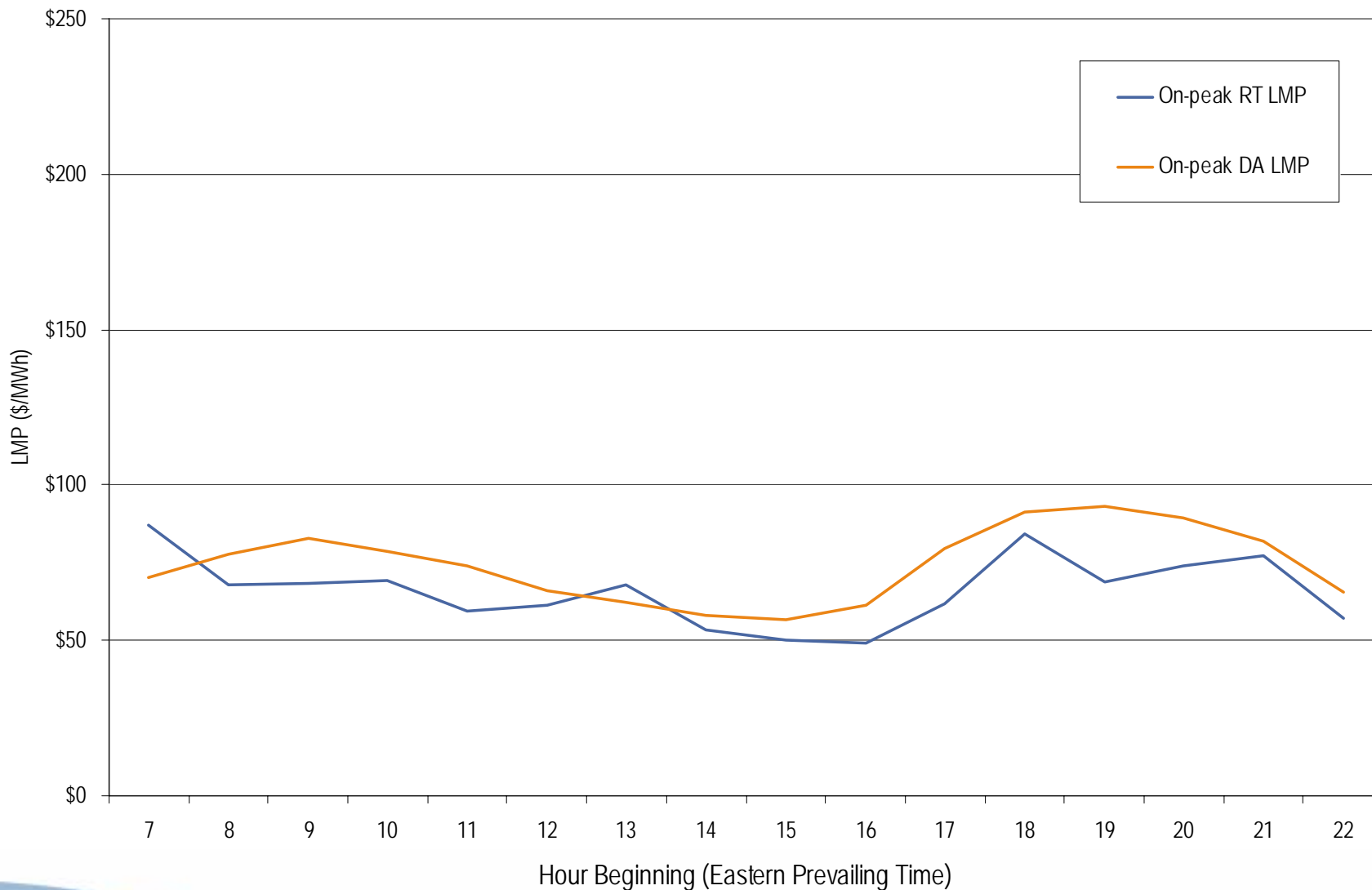




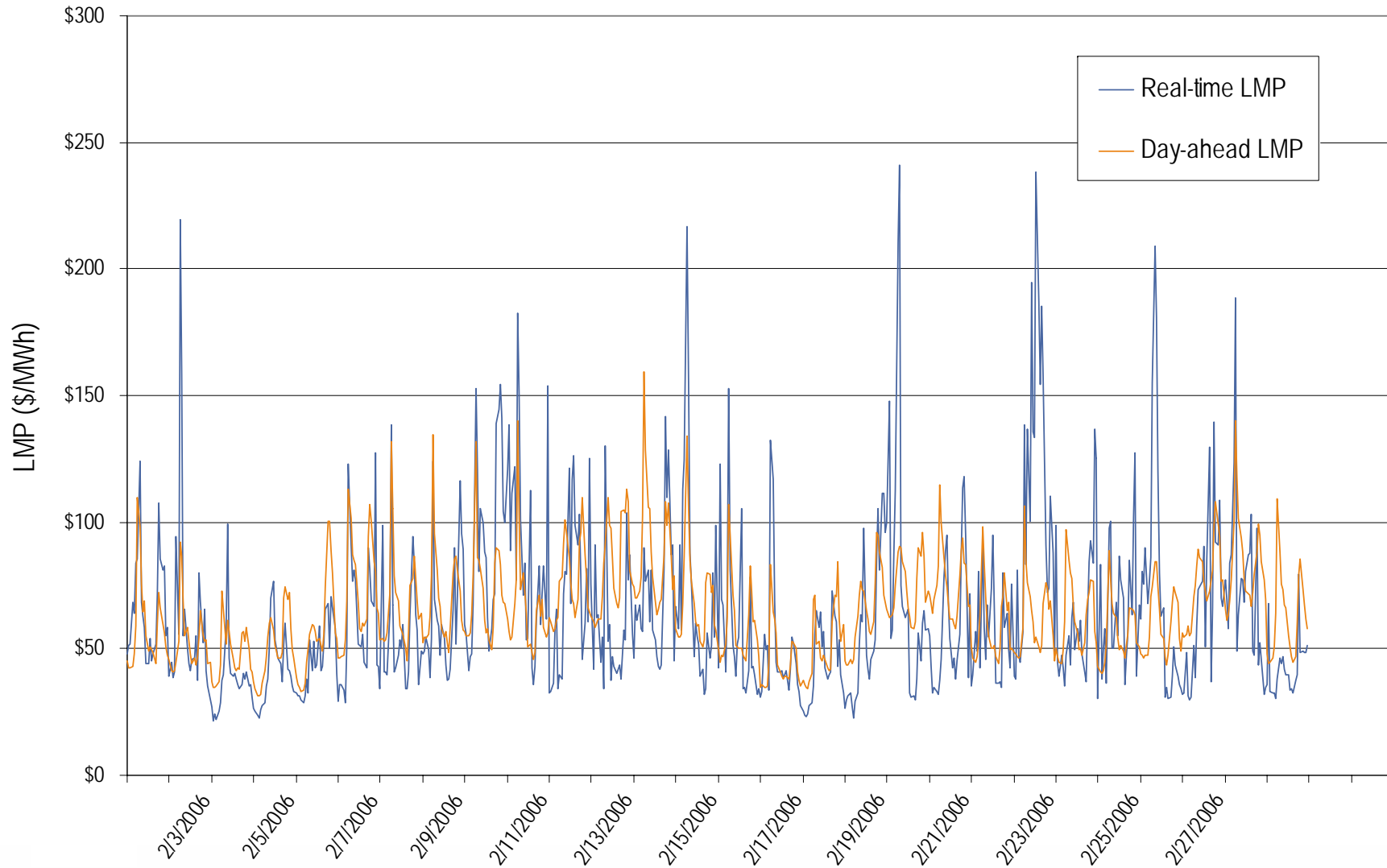
## Dominion real-time and day-ahead hourly average off-peak LMP February 2006



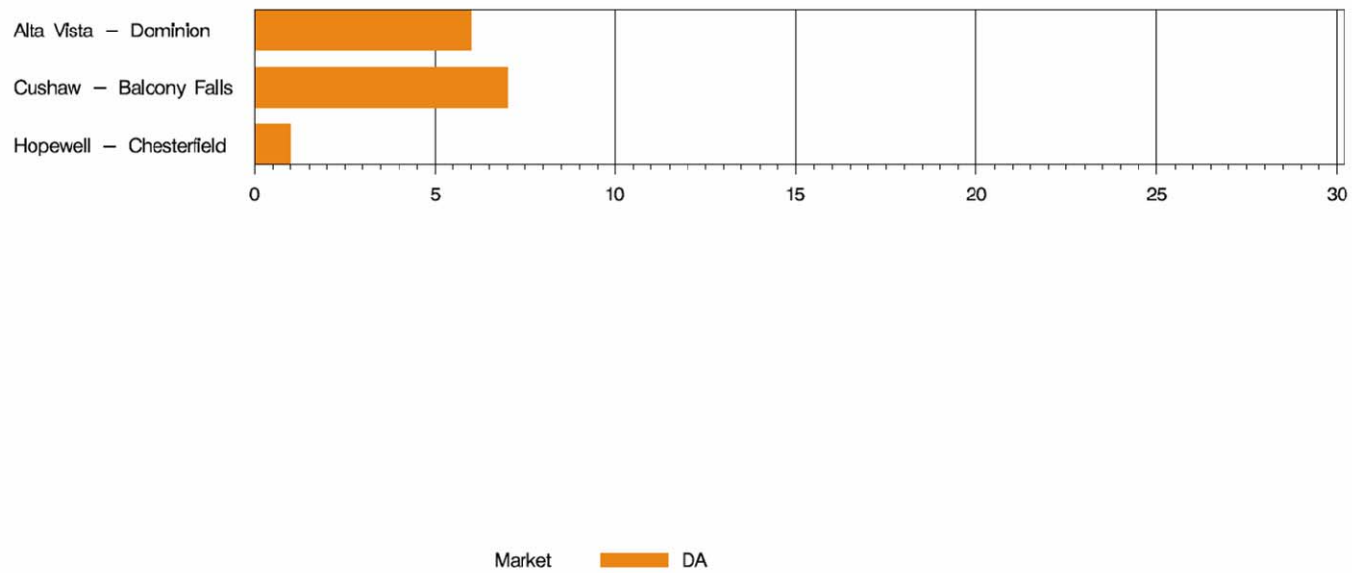
## Dominion real-time and day-ahead hourly average on-peak LMP February 2006



## Dominion real-time and day-ahead hourly zonal LMP February 2006



## DOM Congestion Event Hours by Facility February 2006



## Offer Capping for February 2006:

- There were 0 event hours of Real-Time congestion in Dominion in February.
  - There were 11 offer capped unit hours associated with this congestion.
- There were 14 event hours of Day-Ahead congestion in Dominion in February.
  - There was no offer capping associated with this congestion.