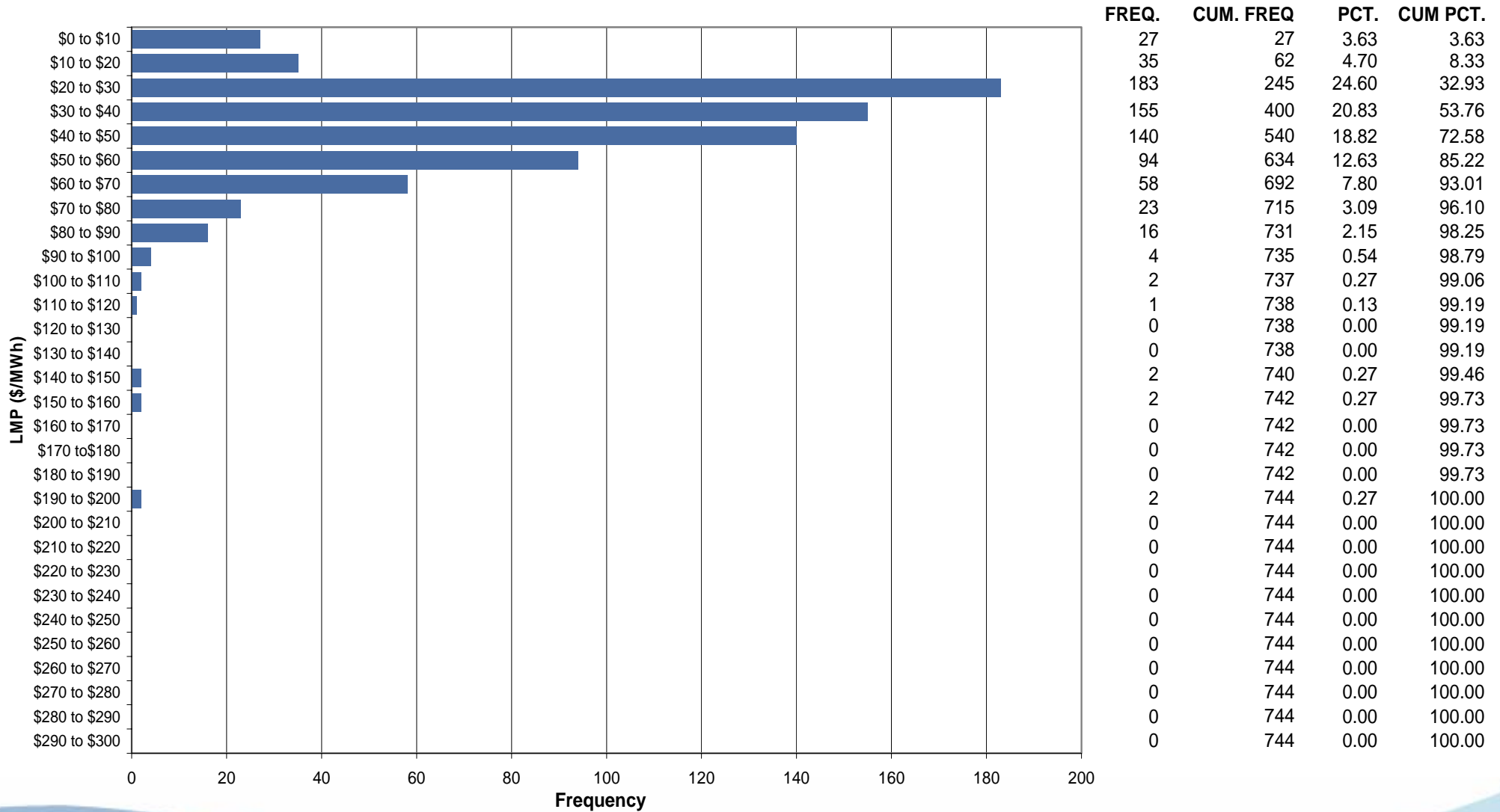




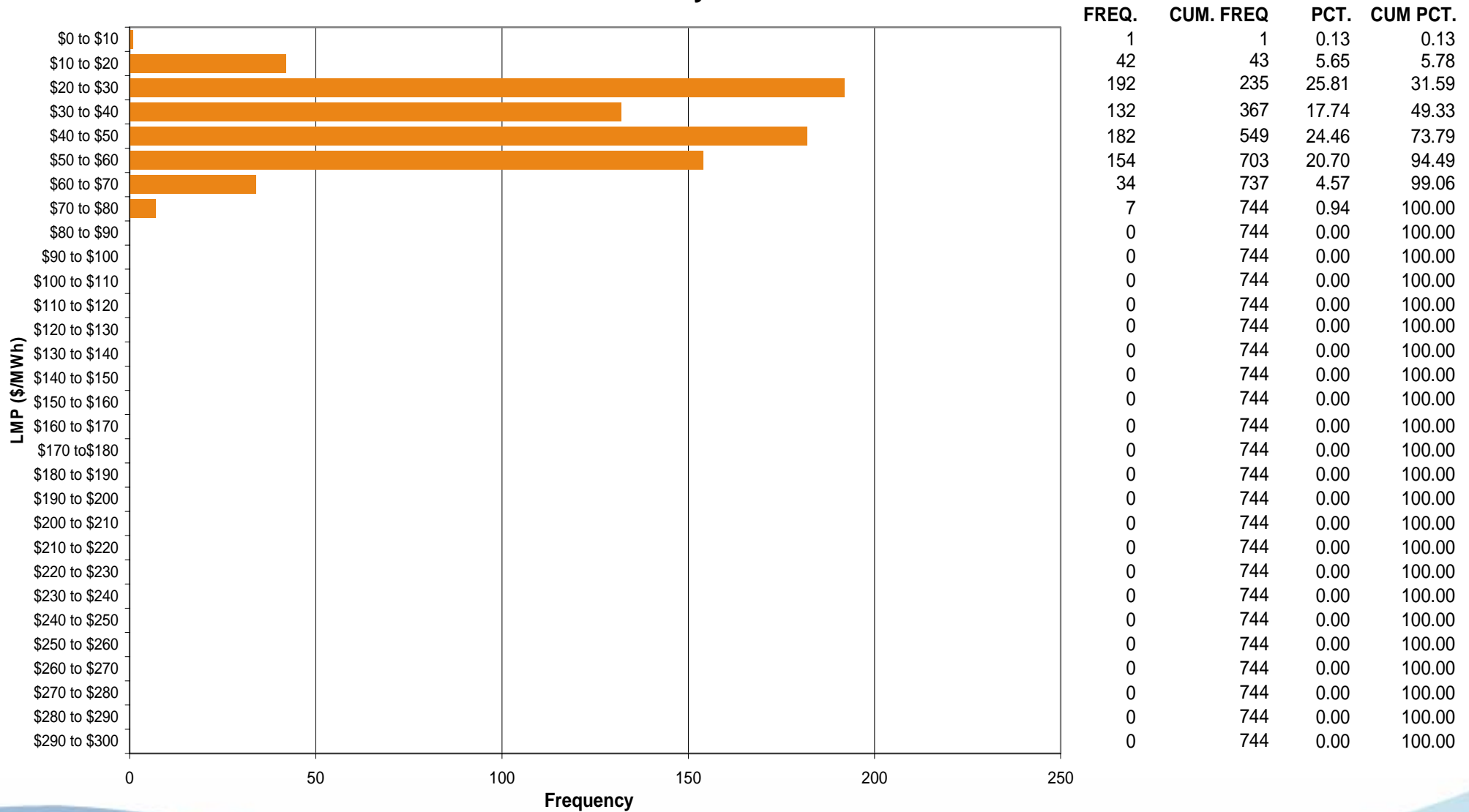
# AEP Control Zone Market Monitoring Report for May 2006

Market Monitoring Unit  
June 2006

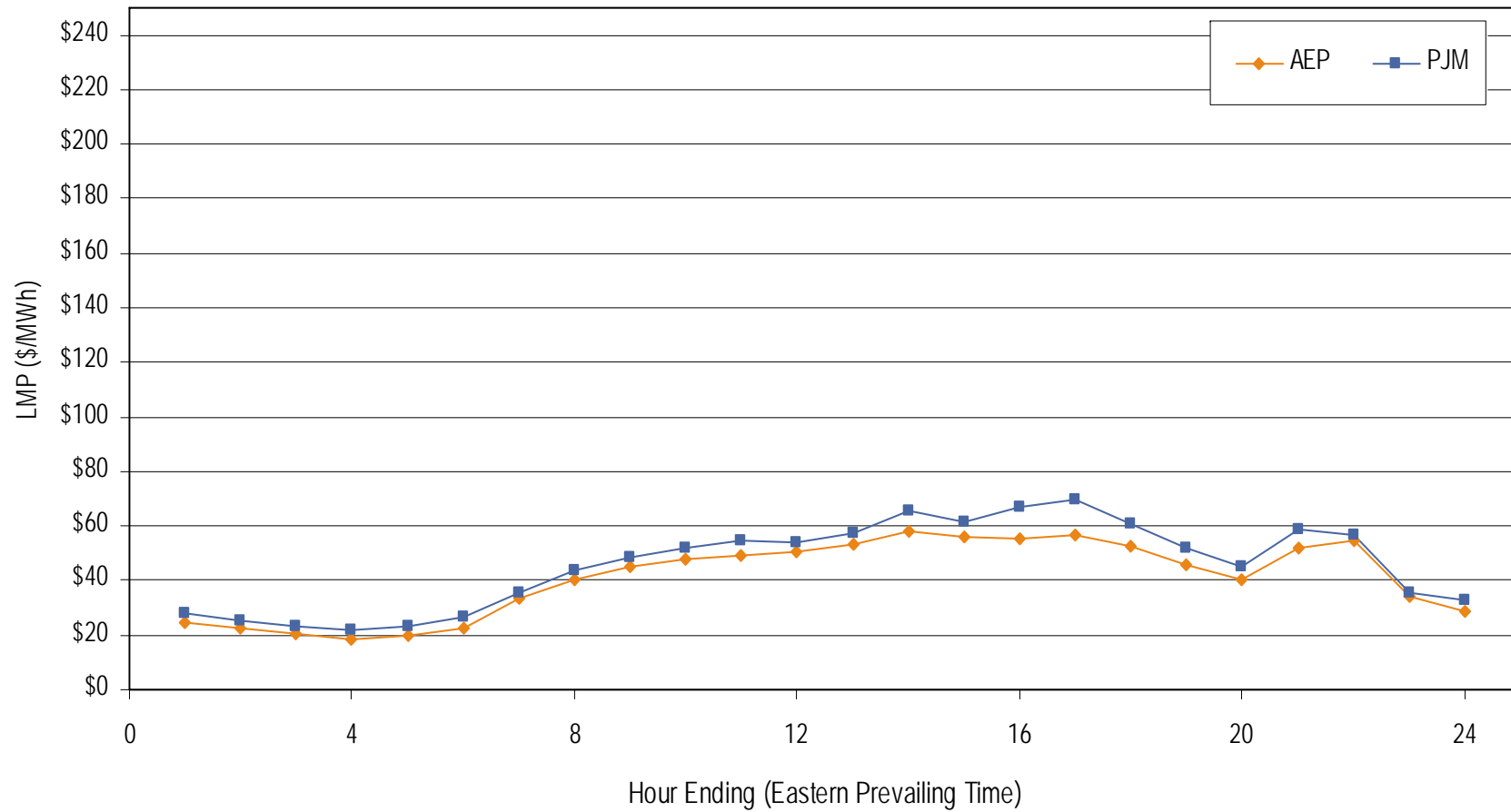
### Frequency distribution by hours of AEP real-time LMP May 2006



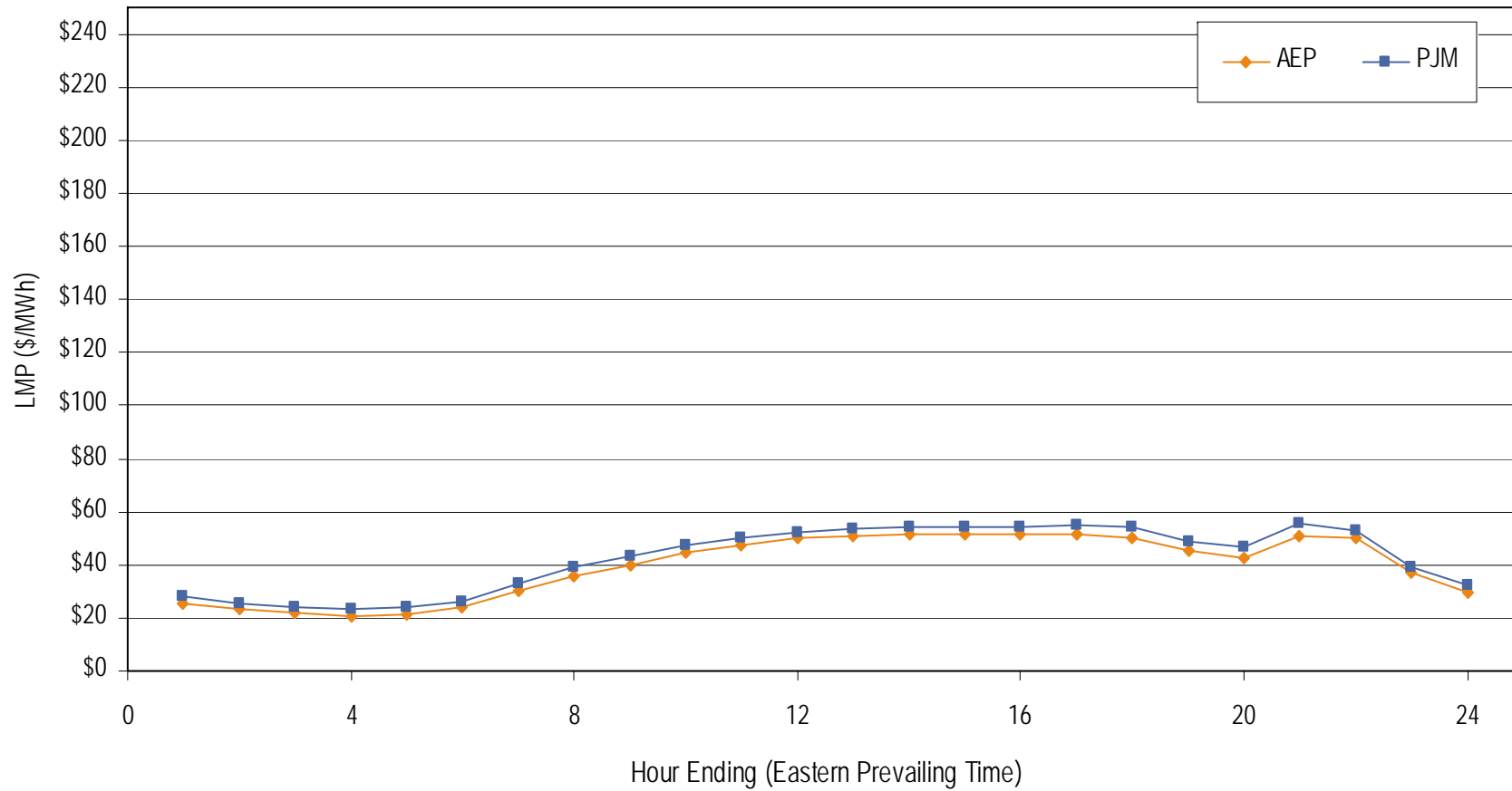
### Frequency distribution by hours of AEP day-ahead LMP May 2006



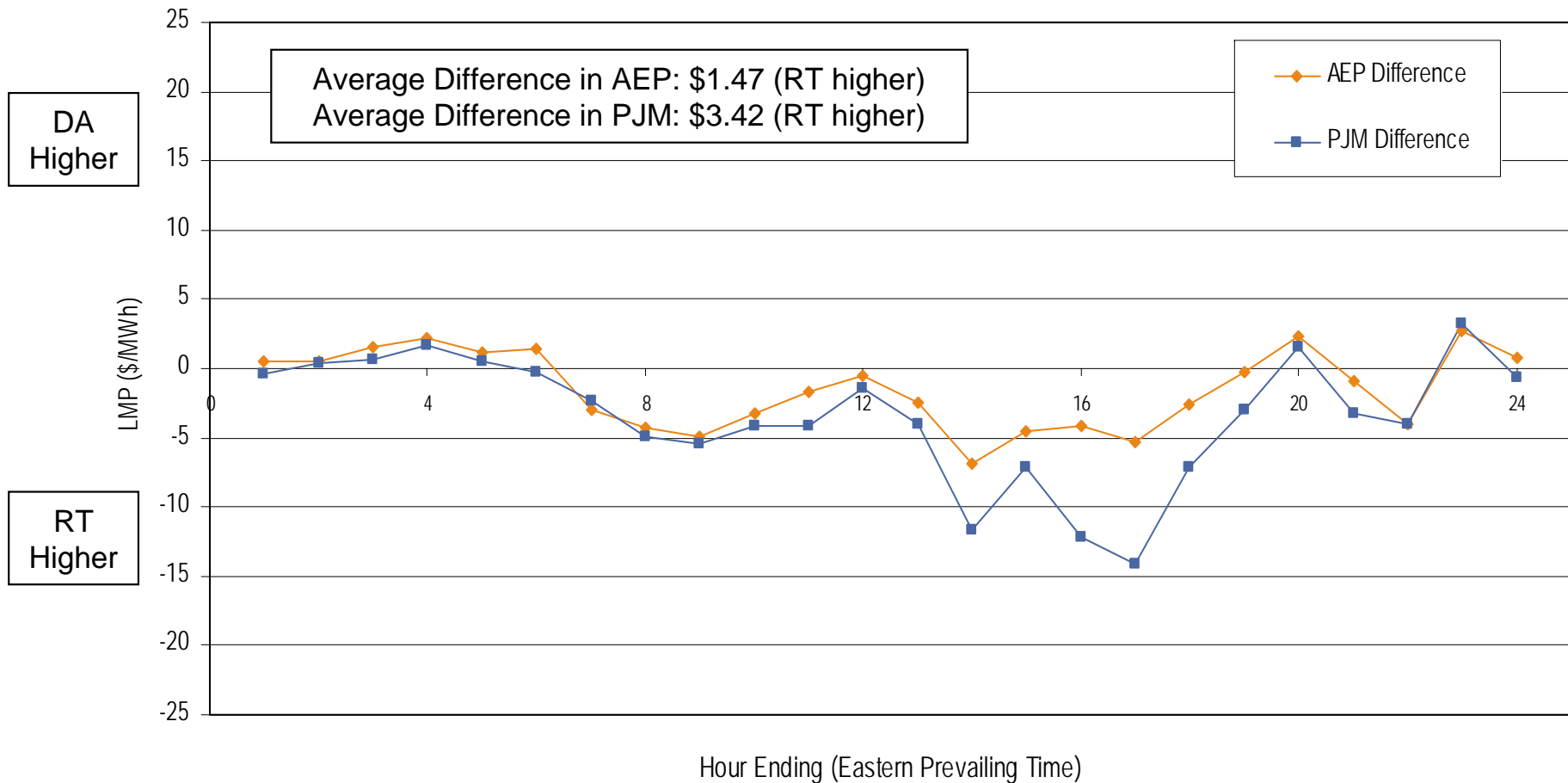
**Average Hourly Real-Time LMP  
May 2006**



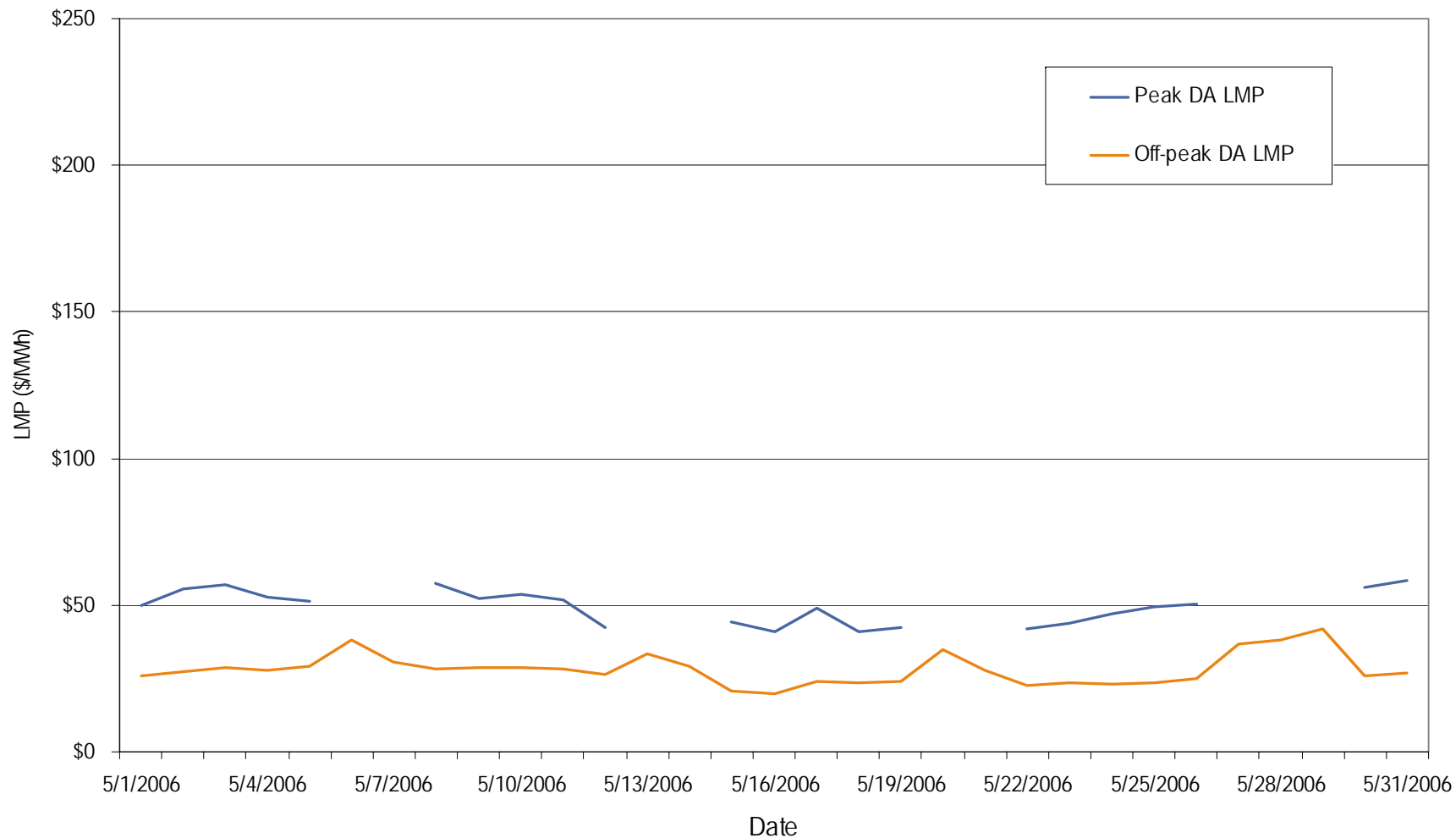
**Average Hourly Day-Ahead LMP  
May 2006**



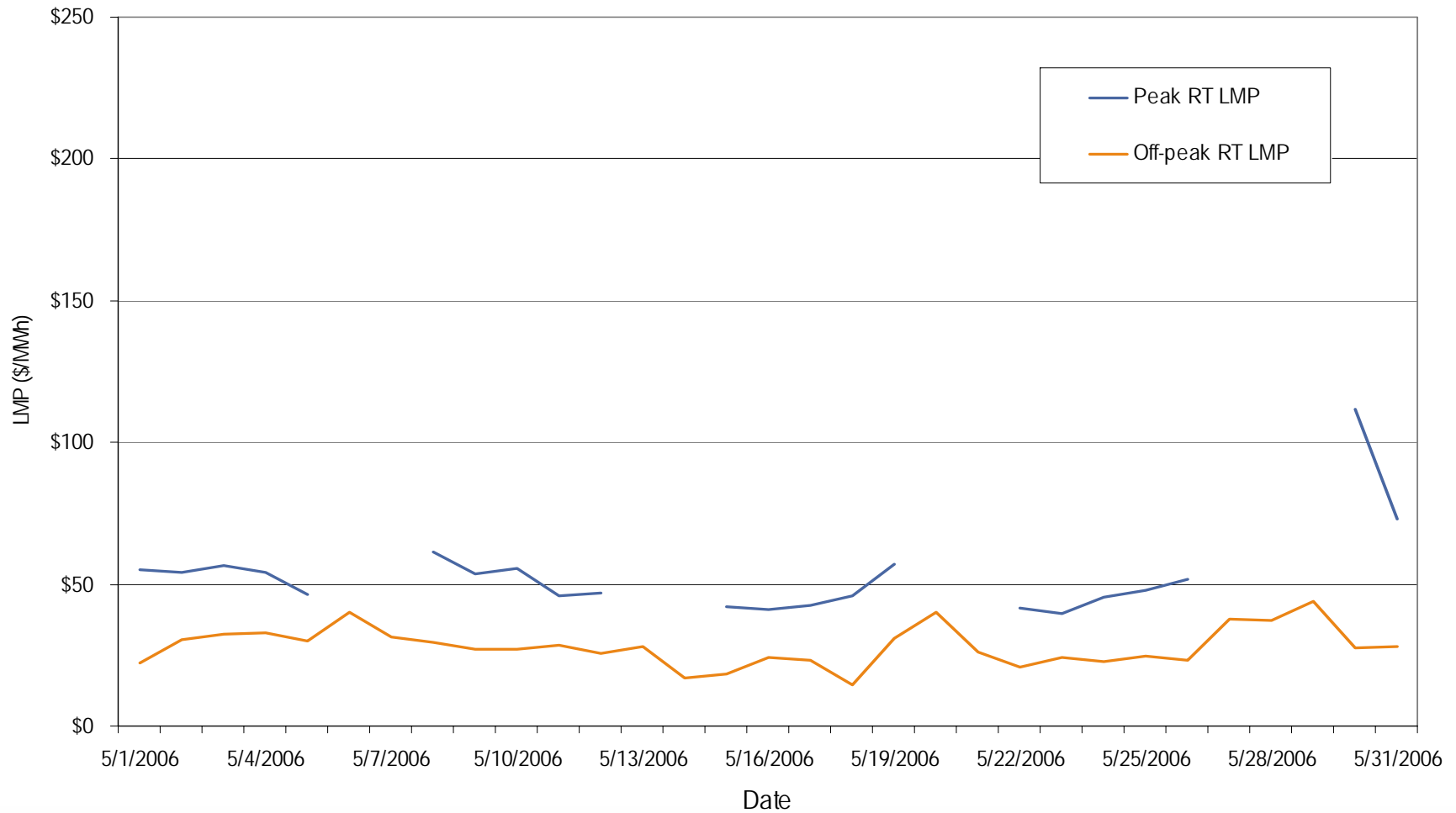
**Average Hourly Difference of Day-Ahead and Real-Time LMPs  
May 2006**



**AEP day-ahead peak and off-peak average daily LMP  
May 2006**

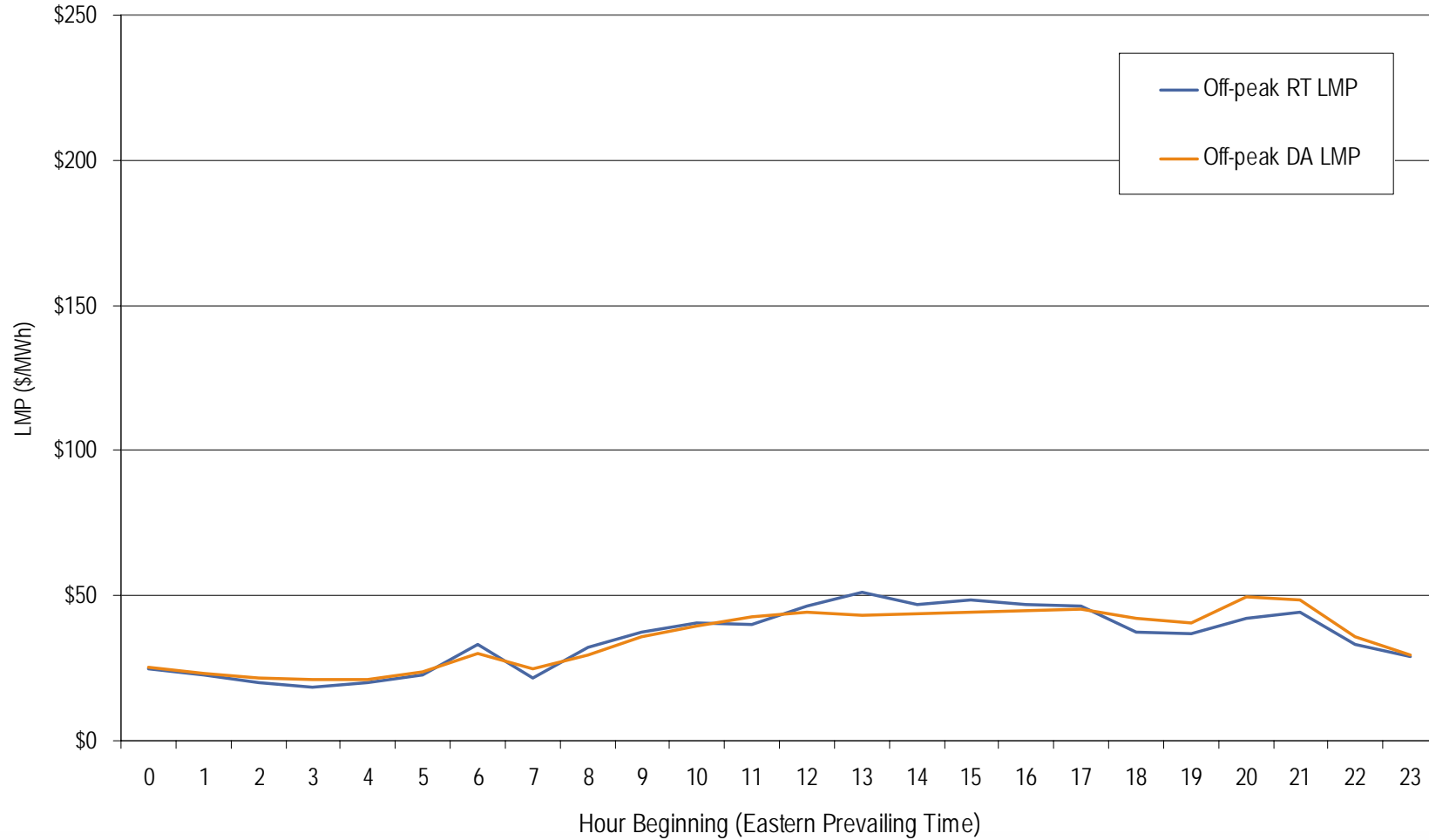


**AEP real-time peak and off-peak average daily LMP  
May 2006**

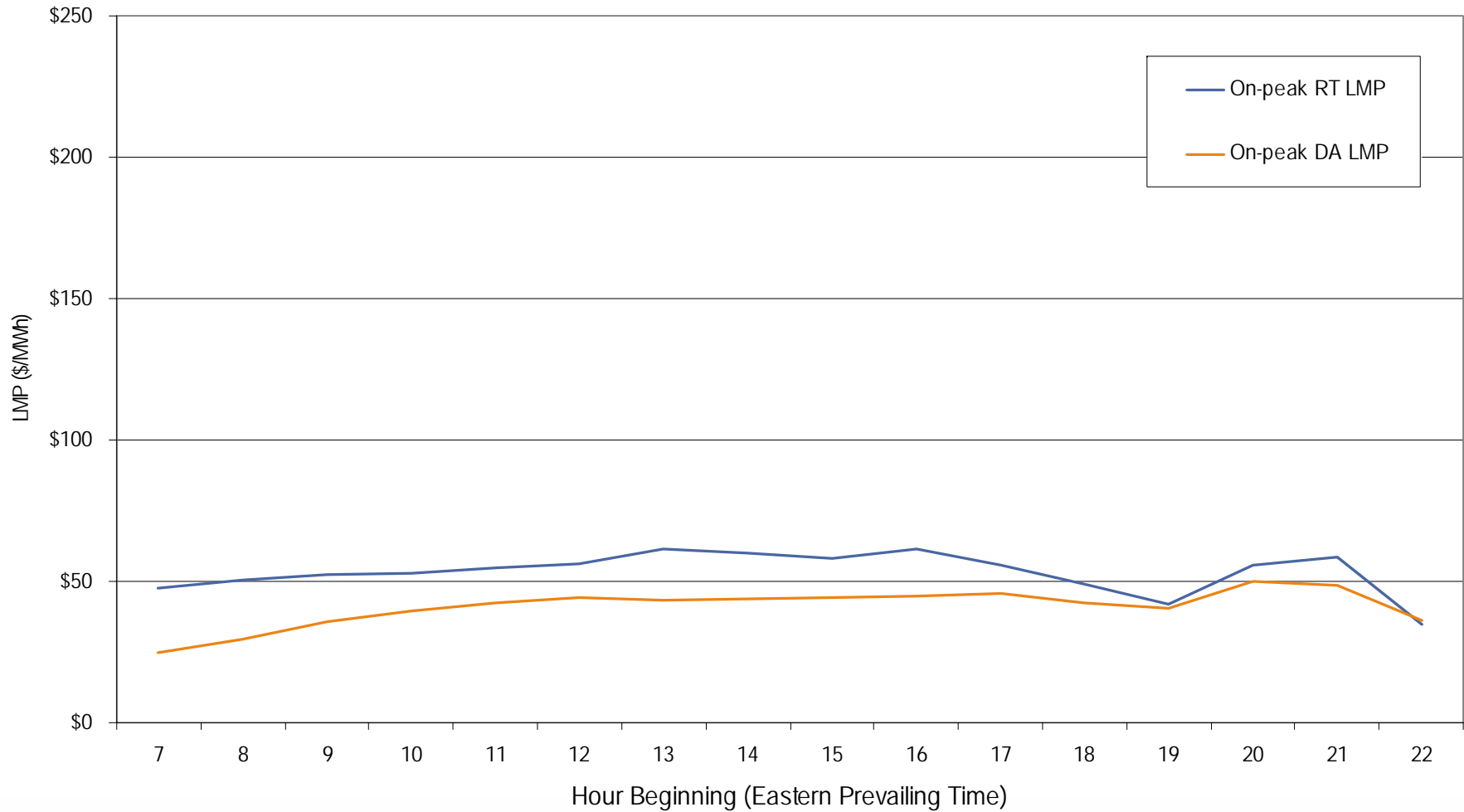




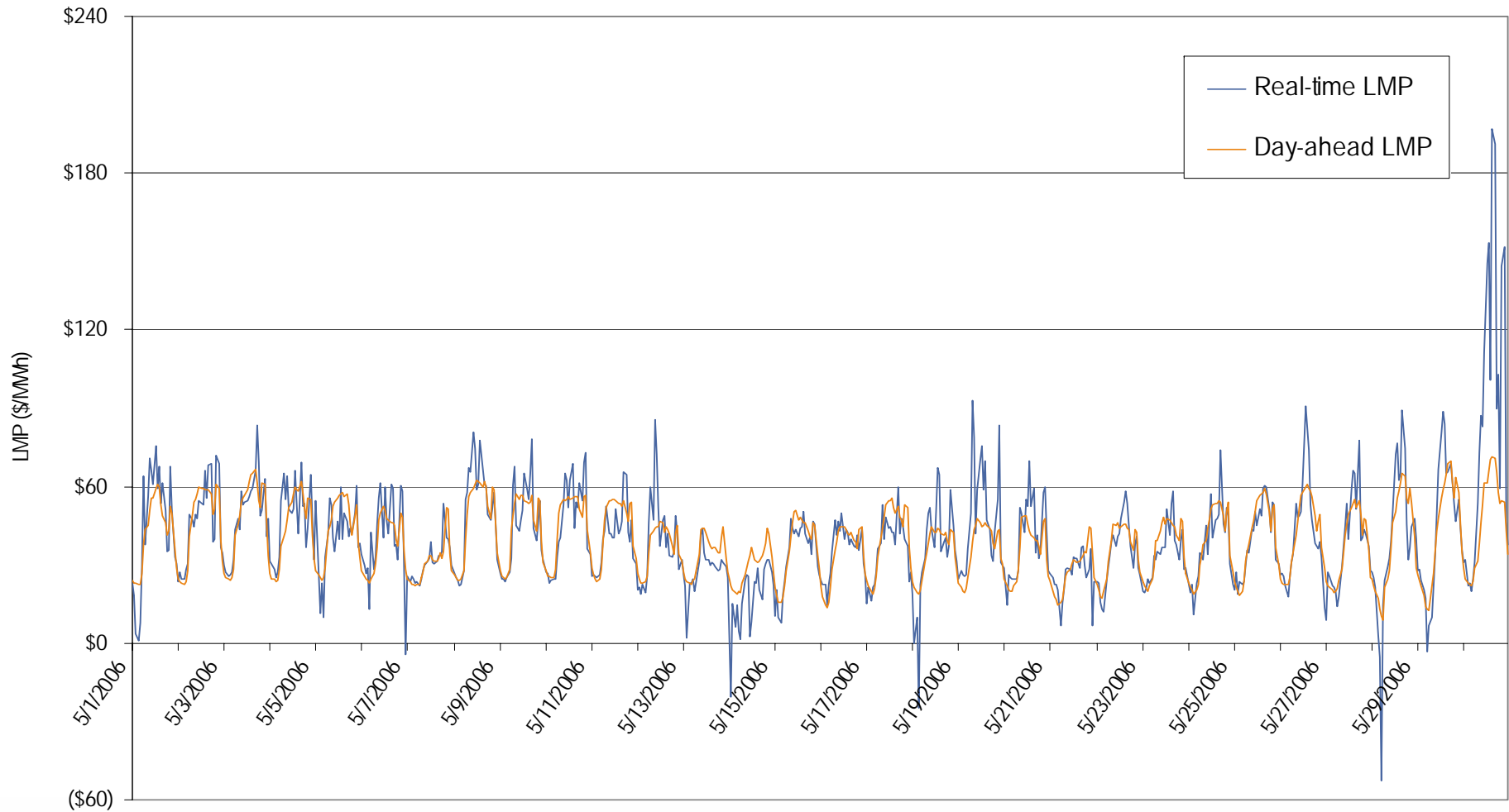
**AEP real-time and day-ahead hourly average off-peak LMP  
May 2006**



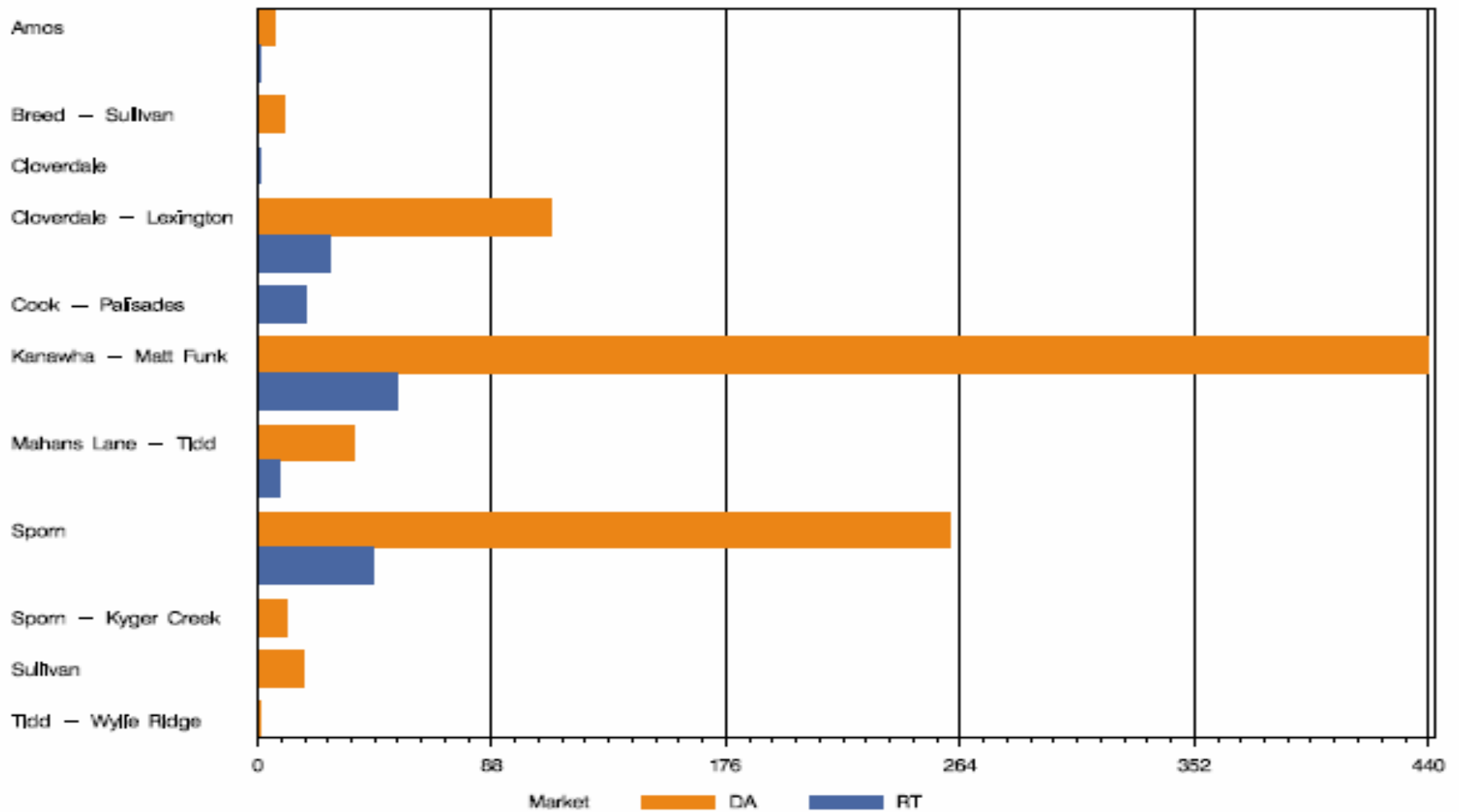
**AEP real-time and day-ahead hourly average on-peak LMP  
May 2006**



## AEP real-time and day-ahead hourly zonal LMP May 2006



## AEP Congestion Event Hours by Facility May 2006



## Offer Capping for May 2006:

- There were 150 event hours of Real-Time congestion in AEP in May.
  - There were 76 offer capped unit hours in Real-Time.
- There were 891 event hours of Day-Ahead congestion in AEP in May.
  - There were 24 offer capped unit hours in Day-Ahead.