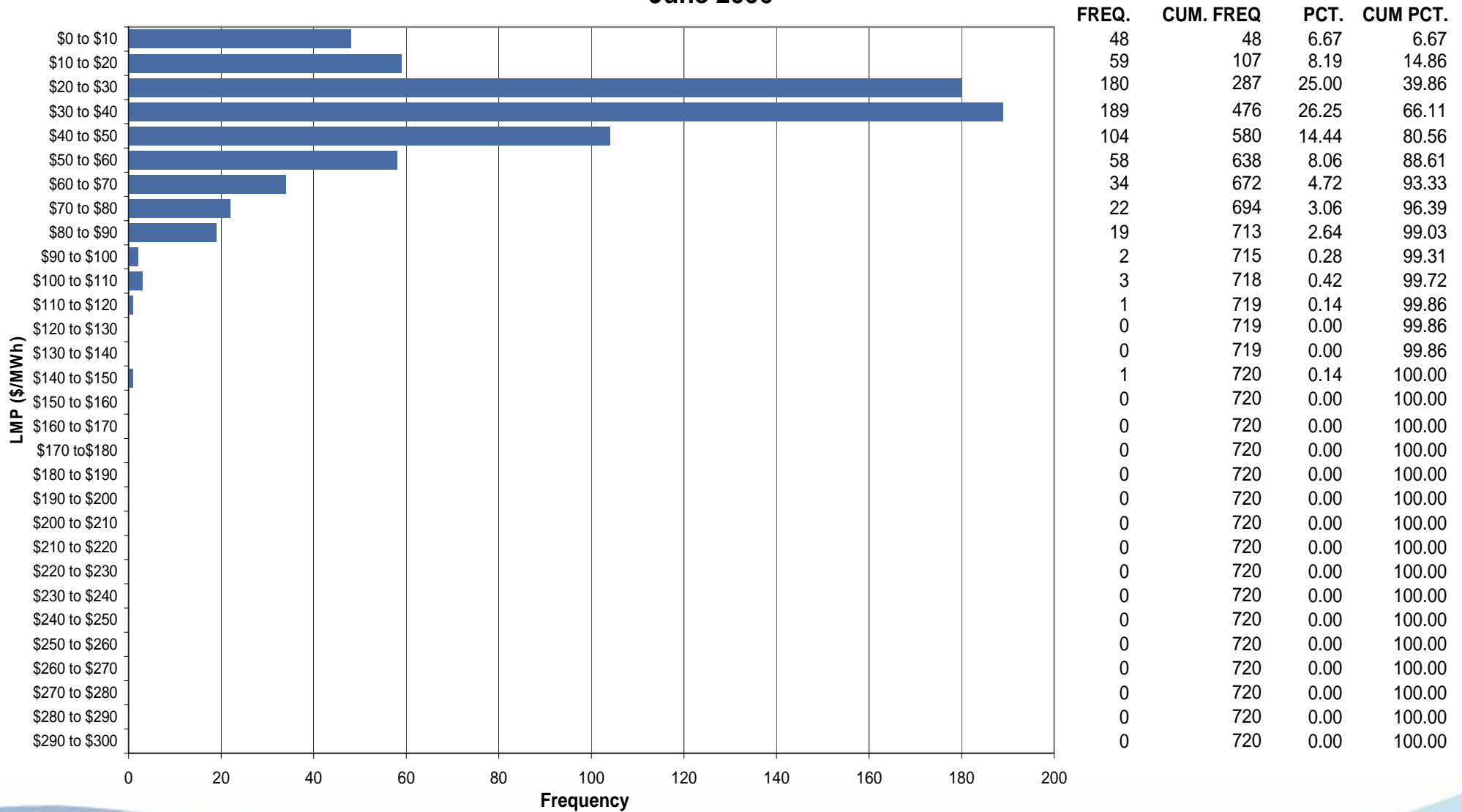




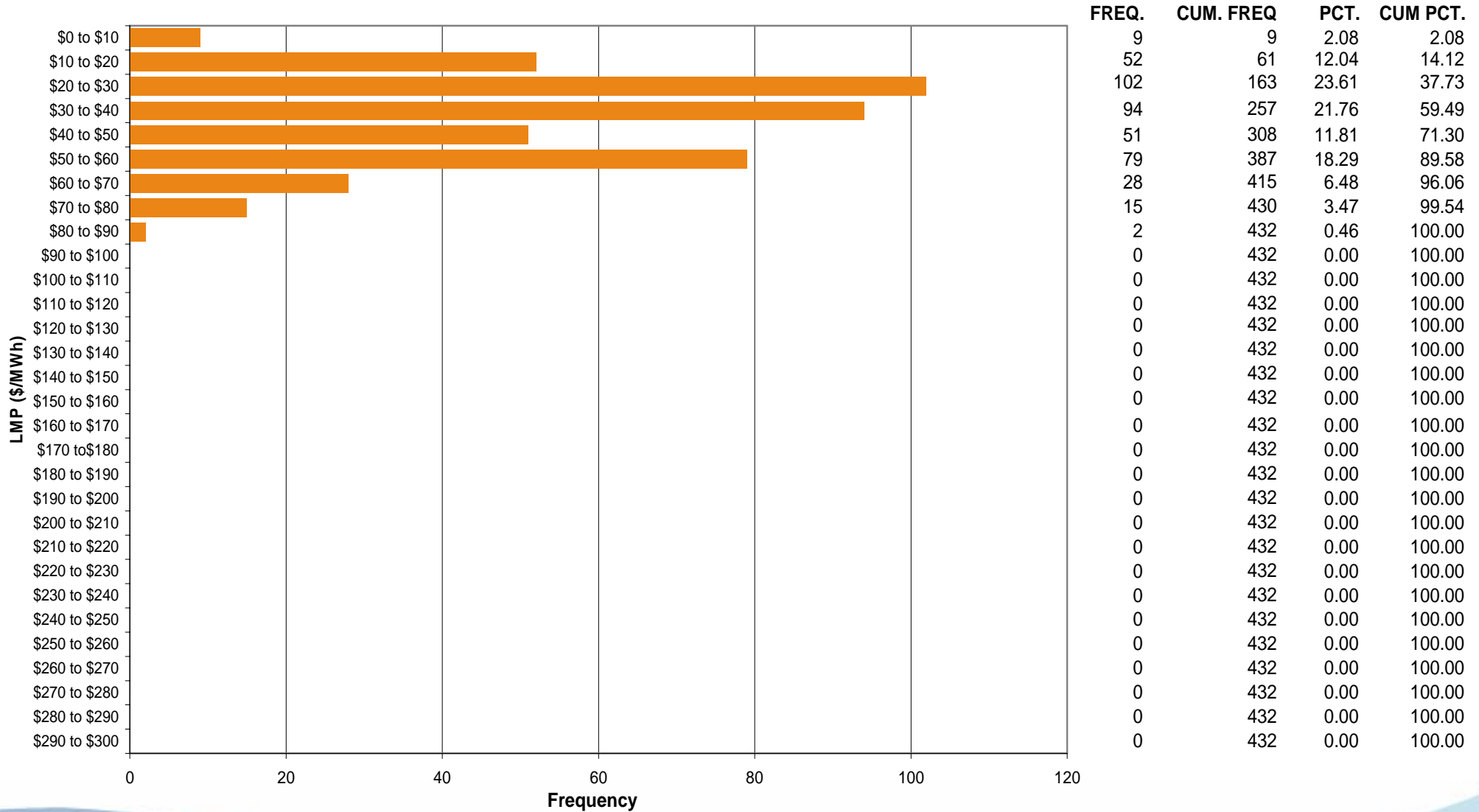
AEP Control Zone Market Monitoring Report for June 2006

Market Monitoring Unit
July 2006

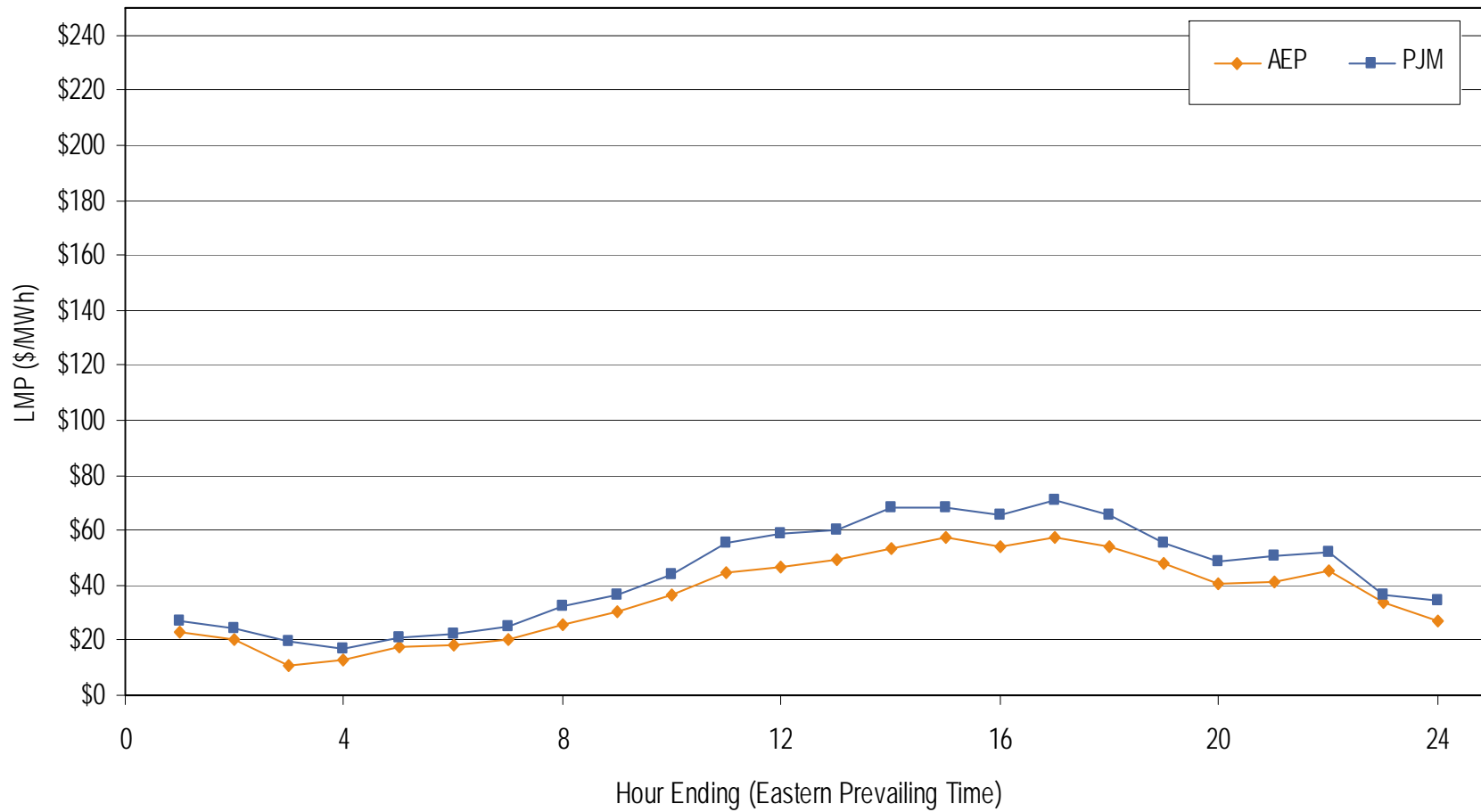
Frequency distribution by hours of AEP real-time LMP June 2006



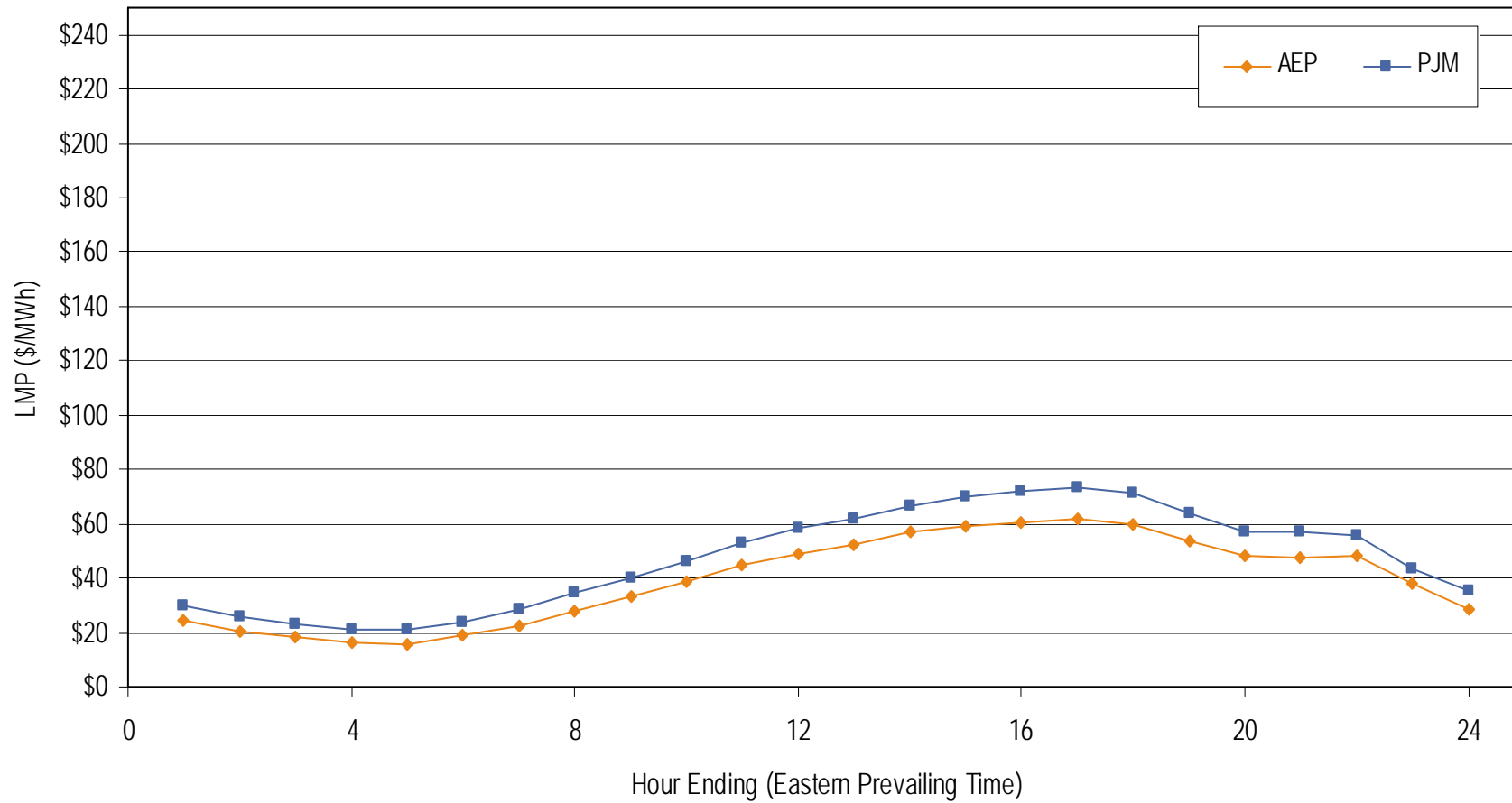
Frequency distribution by hours of AEP day-ahead LMP June 2006



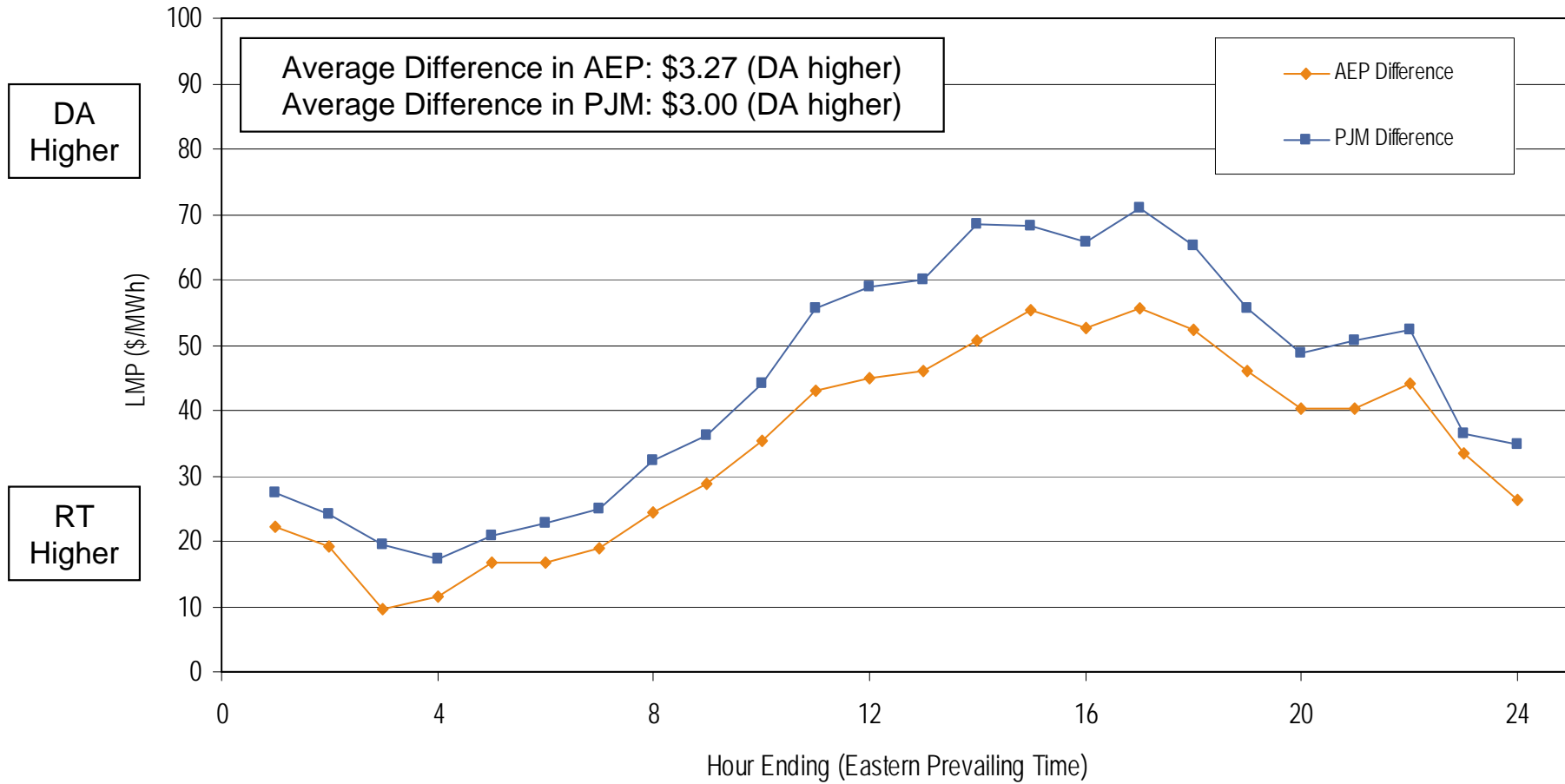
**Average Hourly Real-Time LMP
June 2006**



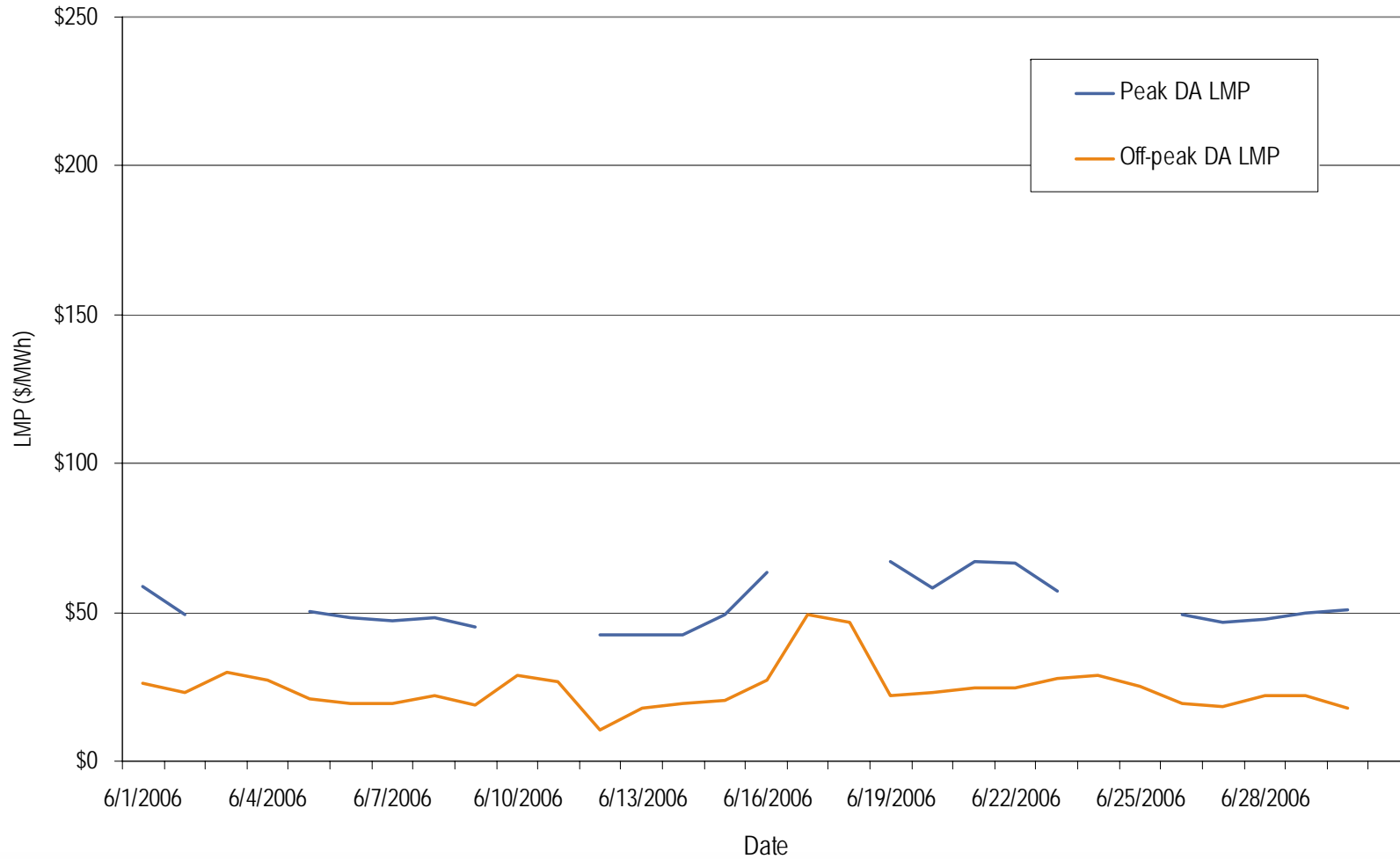
**Average Hourly Day-Ahead LMP
June 2006**



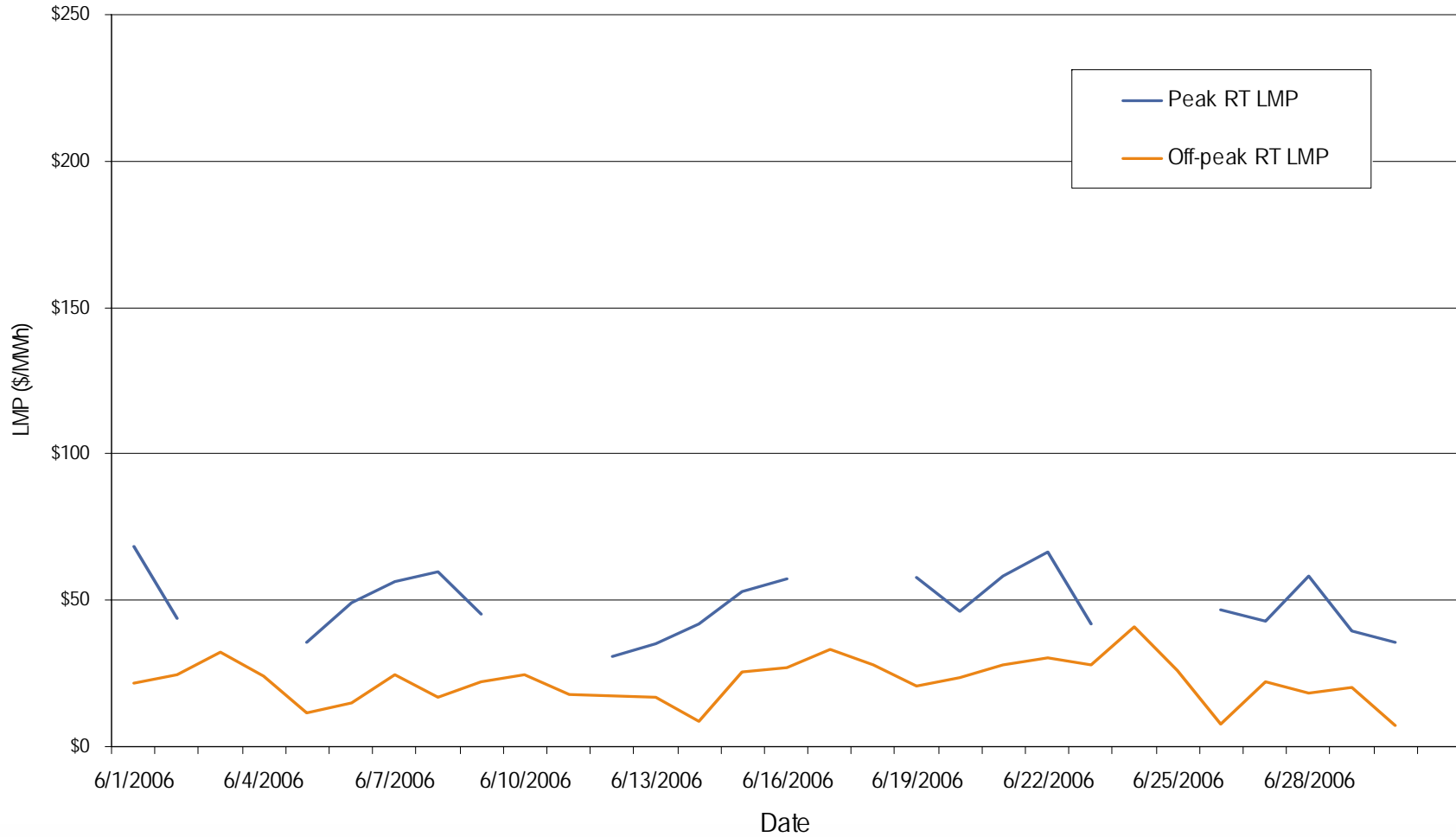
**Average Hourly Difference of Day-Ahead and Real-Time LMPs
June 2006**



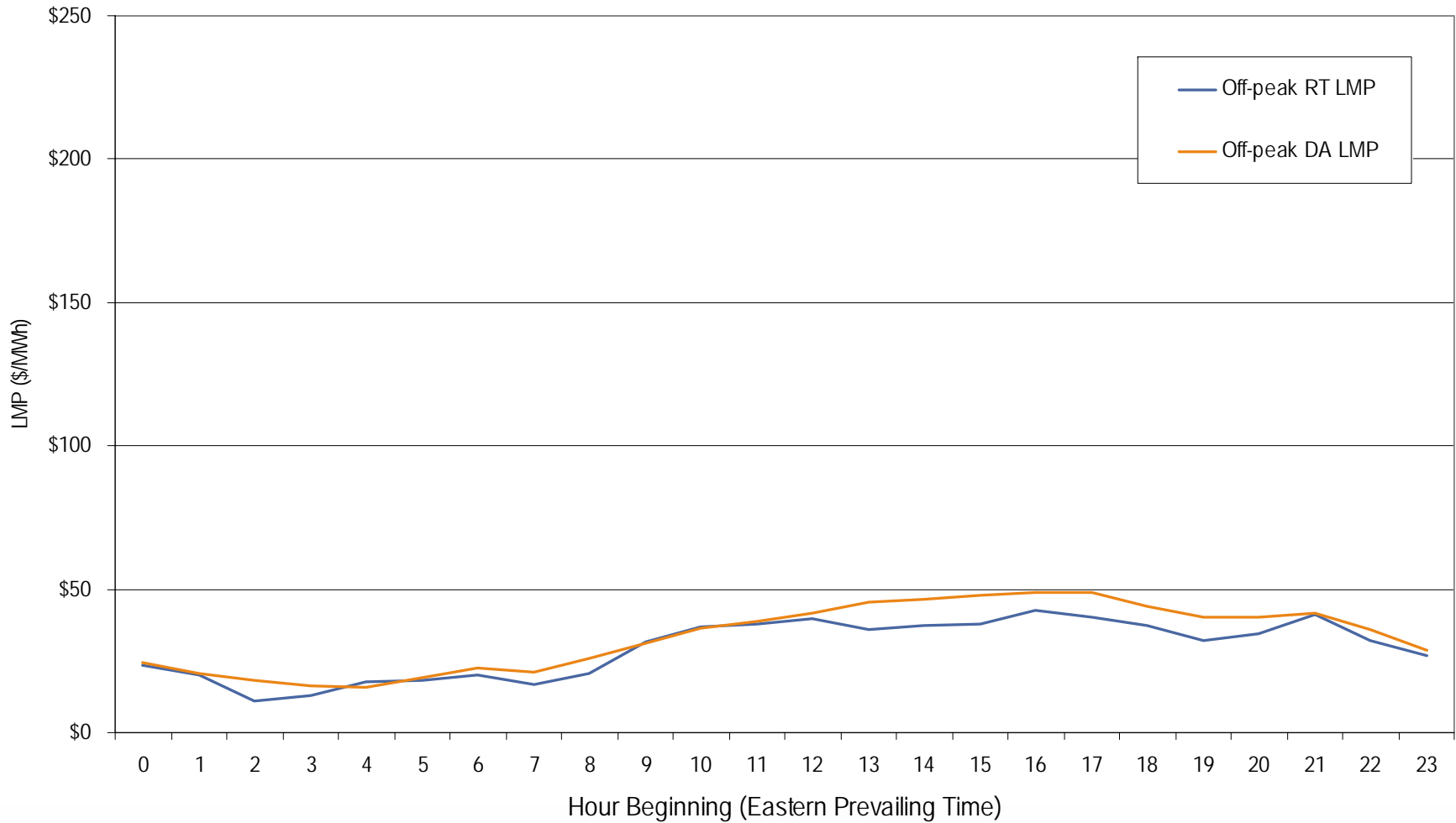
AEP day-ahead peak and off-peak average daily LMP June 2006



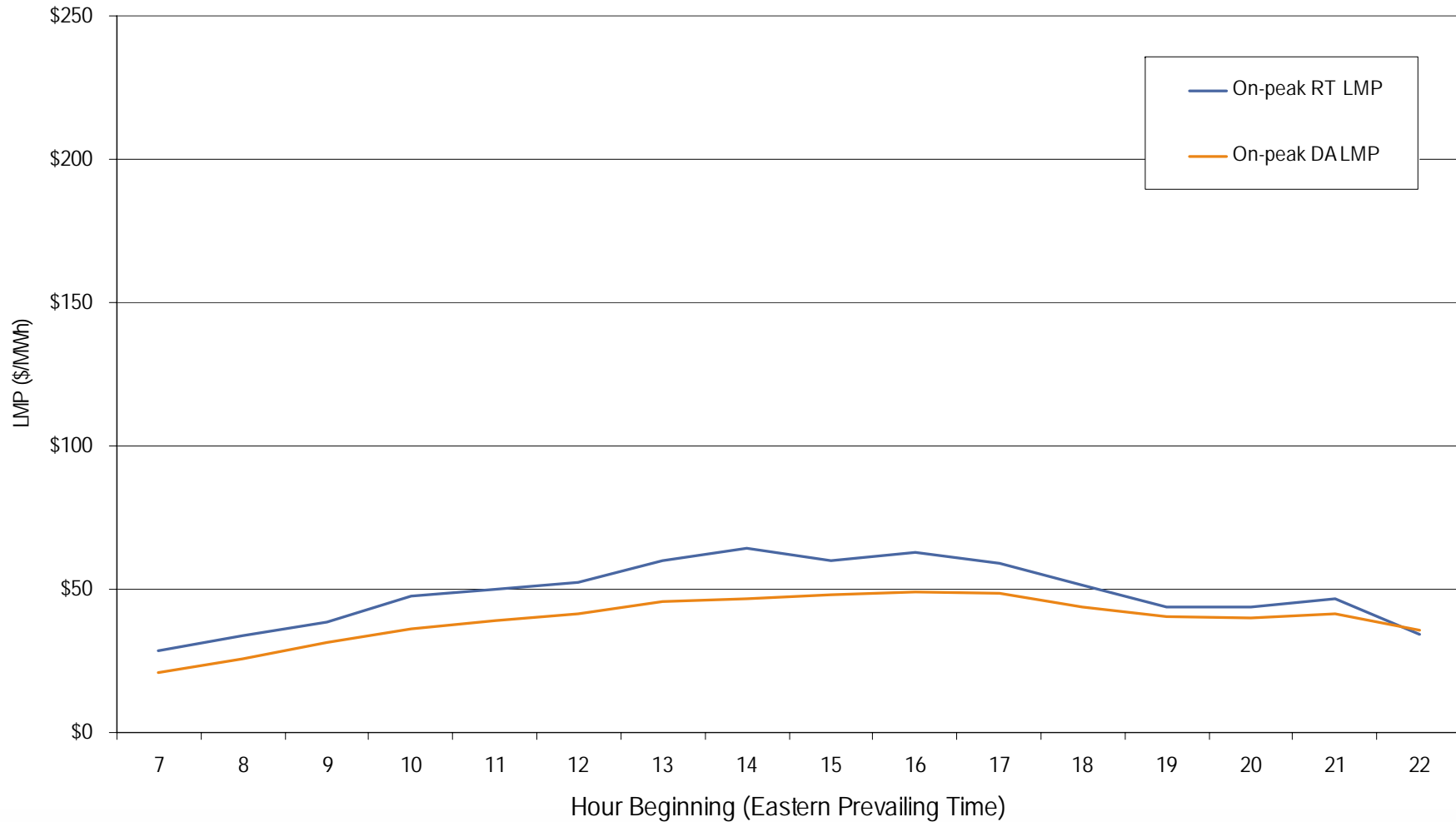
**AEP real-time peak and off-peak average daily LMP
June 2006**



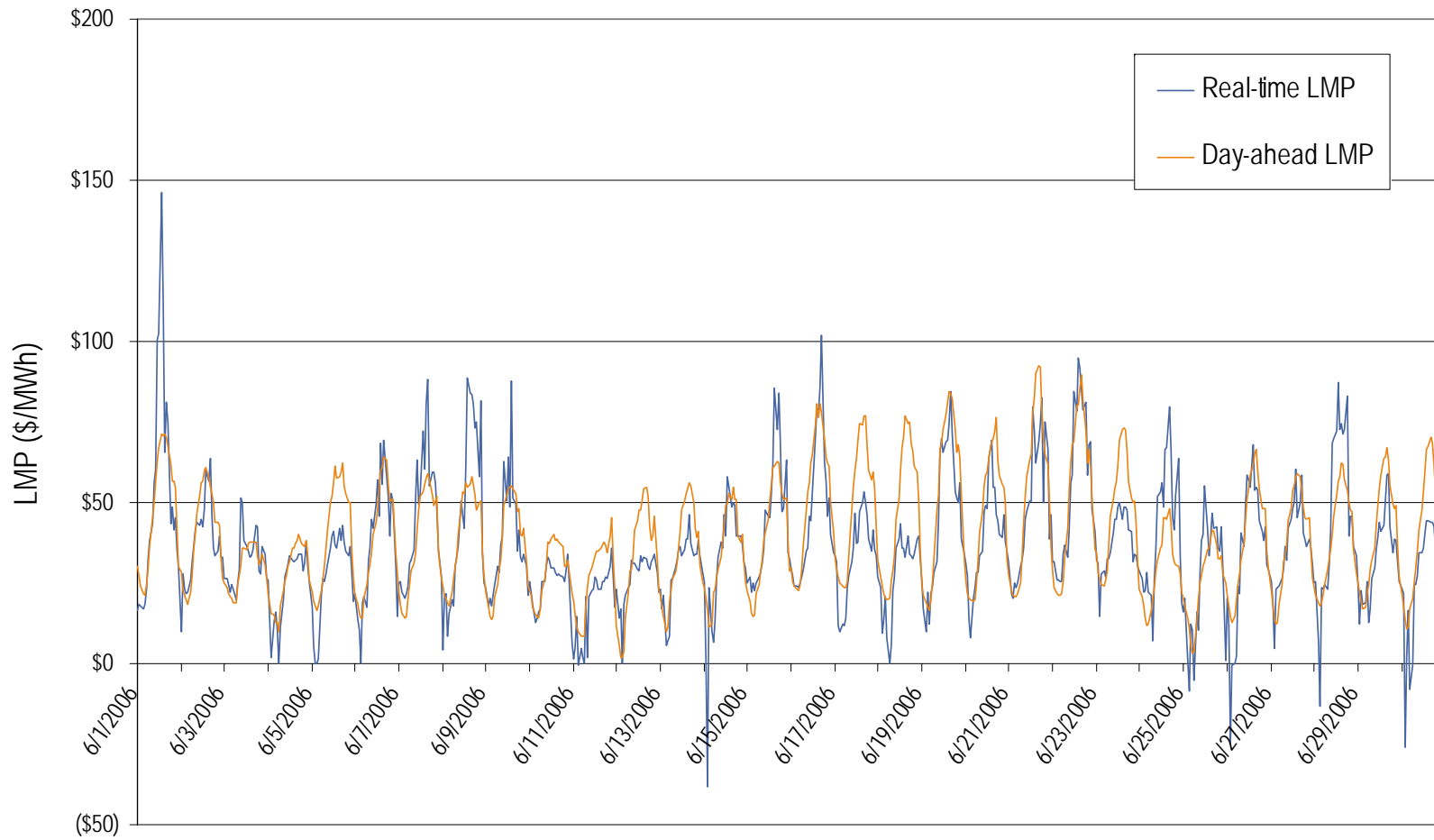
**AEP real-time and day-ahead hourly average off-peak LMP
June 2006**



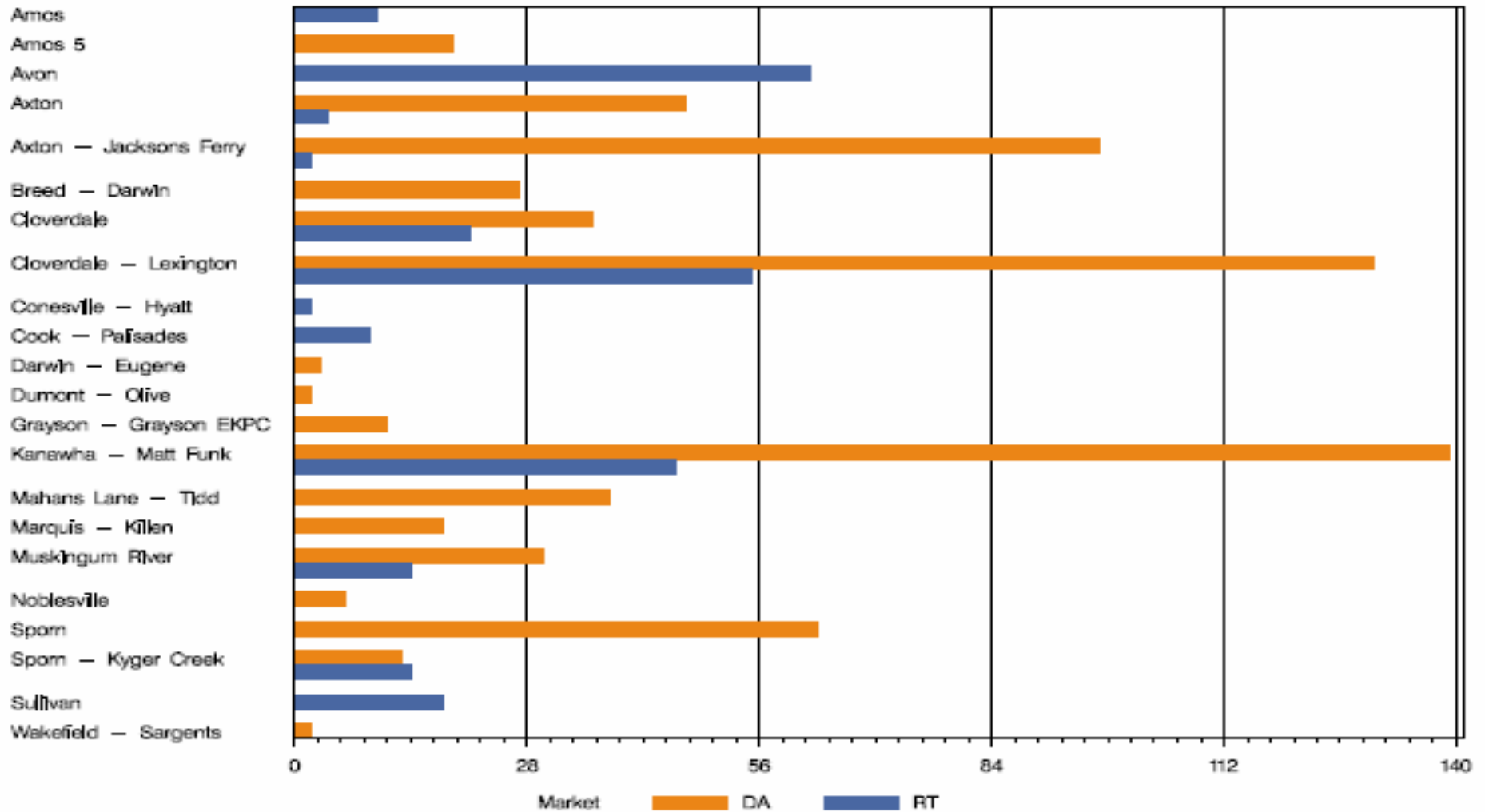
AEP real-time and day-ahead hourly average on-peak LMP June 2006



AEP real-time and day-ahead hourly zonal LMP June 2006



AEP Congestion Event Hours by Facility June 2006



Offer Capping for June 2006:

- There were 257 event hours of Real-Time congestion in AEP in June.
 - There were 76 offer capped unit hours in Real-Time.
- There were 681 event hours of Day-Ahead congestion in AEP in June.
 - There were 24 offer capped unit hours in Day-Ahead.