

2004 Tables

(Includes Data for January through July of 2004)

Table 1: 2004 Pilot Program Reductions		
Daily Reductions		
Date	MWh	Credits
5-Jan-04	24	\$2,302
6-Jan-04	88	\$7,943
7-Jan-04	47	\$4,644
13-Jan-04	18	\$1,974
14-Jan-04	62	\$5,378
15-Jan-04	40	\$3,620
16-Jan-04	56	\$4,847
21-Jan-04	18	\$1,917
23-Jan-04	46	\$5,237
26-Jan-04	42	\$3,576
27-Jan-04	17	\$1,503
30-Jan-04	1	\$78
1-Apr-04	7	\$597
2-Apr-04	28	\$3,297
5-Apr-04	39	\$3,364
7-Apr-04	0	\$31
8-Apr-04	18	\$1,691
11-Apr-04	49	\$5,805
13-Apr-04	72	\$6,658
20-Apr-04	13	\$1,444
1-May-04	123	\$11,499
24-May-04	14	\$1,538
3-Jun-04	5	\$544
7-Jun-04	46	\$5,845
8-Jun-04	4	\$374
9-Jun-04	80	\$7,900
10-Jun-04	3	\$403
14-Jun-04	126	\$11,103
15-Jun-04	30	\$2,883
16-Jun-04	8	\$671
17-Jun-04	37	\$3,450
18-Jun-04	40	\$4,640
24-Jun-04	6	\$584
1-Jul-04	36	\$3,387
2-Jul-04	28	\$3,292
6-Jul-04	16	\$1,693
7-Jul-04	8	\$1,024
8-Jul-04	9	\$894
11-Jul-04	83	\$7,291
13-Jul-04	35	\$2,787
20-Jul-04	79	\$6,958
21-Jul-04	38	\$3,536
22-Jul-04	58	\$5,948
30-Jul-04	25	\$2,887
Daily Statistics		
Total	1,620	\$157,034
Average	37	\$3,569
Maximum	126	\$11,499
Table 1: 2004 Pilot Program Reductions		
Hourly Statistics		
Maximum	49	\$5,805
Average	12	\$1,172

Table 2: 2002-2004 Price Impacts			
	ALM	Economic Program	Emergency Program
2002	\$70/MWh	\$50/MWh	\$40/MWh
2003	N/A	\$1/MWh	N/A
2004	N/A	\$1/MWh	N/A

Table 3: 2001 – 2004 Registered Participants in Load Response Programs				
	Economic Program		Emergency Program	
	Sites	MW	Sites	MW
2001		65		155
2002	116	337	61	548
2003	245	724	168	659
2004	350	1,109	4,315	1,783

Table 4: 2001 – 2004 Performance of Economic Program Participants			
	Total MWh	Total Payments	\$/MWh
2001	50	\$13,994	\$283
2002	6,462	\$761,977	\$118
2003	19,290	\$827,179	\$43
2004	31,719	\$1,096,573	\$35

Table 5: 2004 Emergency Program and Economic Program Comparison			
	MWh	Credits	Price/MWh
Emergency	0	\$0	\$0
Economic	31,719	\$1,096,573	\$35

Table 6: 2001 - 2004 Payments Comparison			
	Emergency (\$)	Economic (\$)	Total (\$)
2001	\$287,514	\$13,994	\$301,508
2002	\$282,756	\$761,997	\$1,044,753
2003	\$26,613	\$827,179	\$853,792
2004	\$0	\$1,096,573	\$1,096,573

Table 7: Load Response Programs and ALM History						
	1999	2000	2001	2002	2003	2004
ALM Resources (MW)	2,005	1,693	1,962	1,292	1,207	1,228
2000-2001 Pilot Program Resources (MW)	NA	80	220	NA	NA	NA
Load Response Program (MW)	NA	NA	NA	891	1,383	2,892
Load Response MW also enrolled in ALM	NA	NA	164	298	445	449

Table 8: 2004 Total Daily Reductions

Table 8: 2004 Total Daily Reductions								
	Real-Time		Day-Ahead		Pilot Program		Totals	
Date	RT MWh	RT Credits	DA MWh	DA Credits	MWh	Credits	MWh	Credits
2-Jan-04	126	\$110	0	\$0	0	\$0	126	\$110
3-Jan-04	1	\$0	0	\$0	0	\$0	1	\$0
5-Jan-04	60	\$243	0	\$0	24	\$2,302	84	\$2,545
6-Jan-04	56	\$1,541	0	\$0	88	\$7,943	144	\$9,484
7-Jan-04	1	\$24	0	\$0	47	\$4,644	48	\$4,668
9-Jan-04	25	\$1,424	0	\$0	0	\$0	25	\$1,424
12-Jan-04	257	\$7,329	0	\$0	0	\$0	257	\$7,329
13-Jan-04	245	\$5,252	0	\$0	18	\$1,974	264	\$7,226
14-Jan-04	163	\$7,080	0	\$0	62	\$5,378	225	\$12,458
15-Jan-04	92	\$3,639	0	\$0	40	\$3,620	132	\$7,259
16-Jan-04	160	\$8,995	0	\$0	56	\$4,847	216	\$13,841
17-Jan-04	35	\$1,903	0	\$0	0	\$0	35	\$1,903
18-Jan-04	93	\$4,379	0	\$0	0	\$0	93	\$4,379
19-Jan-04	105	\$5,072	0	\$0	0	\$0	105	\$5,072
20-Jan-04	22	\$1,422	0	\$0	0	\$0	22	\$1,422
21-Jan-04	56	\$3,954	0	\$0	18	\$1,917	74	\$5,871
22-Jan-04	230	\$12,132	0	\$0	0	\$0	230	\$12,132
23-Jan-04	166	\$13,650	0	\$0	46	\$5,237	213	\$18,887
24-Jan-04	132	\$9,058	0	\$0	0	\$0	132	\$9,058
25-Jan-04	62	\$5,475	0	\$0	0	\$0	62	\$5,475
26-Jan-04	43	\$3,658	0	\$0	42	\$3,576	85	\$7,234
27-Jan-04	142	\$11,473	0	\$0	17	\$1,503	159	\$12,977
28-Jan-04	202	\$12,448	0	\$0	0	\$0	202	\$12,448
29-Jan-04	494	\$20,527	0	\$0	0	\$0	494	\$20,527
30-Jan-04	552	\$32,152	0	\$0	1	\$78	553	\$32,229
31-Jan-04	348	\$19,814	0	\$0	0	\$0	348	\$19,814
1-Feb-04	234	\$8,328	0	\$0	0	\$0	234	\$8,328
2-Feb-04	336	\$16,190	0	\$0	0	\$0	336	\$16,190
3-Feb-04	235	\$9,167	0	\$0	0	\$0	235	\$9,167
4-Feb-04	195	\$10,093	0	\$0	0	\$0	195	\$10,093
6-Feb-04	18	\$857	0	\$0	0	\$0	18	\$857
9-Feb-04	141	\$6,692	0	\$0	0	\$0	141	\$6,692
10-Feb-04	240	\$5,750	0	\$0	0	\$0	240	\$5,750
11-Feb-04	227	\$6,486	0	\$0	0	\$0	227	\$6,486
12-Feb-04	102	\$1,817	0	\$0	0	\$0	102	\$1,817
13-Feb-04	38	\$1,302	0	\$0	0	\$0	38	\$1,302
14-Feb-04	-61	\$3	0	\$0	0	\$0	-61	\$3
15-Feb-04	45	\$771	0	\$0	0	\$0	45	\$771
16-Feb-04	695	\$30,732	0	\$0	0	\$0	695	\$30,732
17-Feb-04	733	\$18,057	0	\$0	0	\$0	733	\$18,057
18-Feb-04	350	\$9,306	0	\$0	0	\$0	350	\$9,306
19-Feb-04	281	\$2,271	0	\$0	0	\$0	281	\$2,271
20-Feb-04	126	\$1,807	0	\$0	0	\$0	126	\$1,807
21-Feb-04	157	\$4,826	0	\$0	0	\$0	157	\$4,826
23-Feb-04	324	\$8,417	0	\$0	0	\$0	324	\$8,417
24-Feb-04	321	\$2,097	0	\$0	0	\$0	321	\$2,097
25-Feb-04	180	\$3,815	0	\$0	0	\$0	180	\$3,815

Table 8: 2004 Total Daily Reductions

Date	Real-Time		Day-Ahead		Pilot Program		Totals	
	RT MWh	RT Credits	DA MWh	DA Credits	MWh	Credits	MWh	Credits
26-Feb-04	182	\$3,239	0	\$0	0	\$0	182	\$3,239
27-Feb-04	232	\$2,084	0	\$0	0	\$0	232	\$2,084
8-Mar-04	376	\$13,370	0	\$0	0	\$0	376	\$13,370
9-Mar-04	447	\$4,420	0	\$0	0	\$0	447	\$4,420
10-Mar-04	383	\$8,705	0	\$0	0	\$0	383	\$8,705
11-Mar-04	442	\$11,650	0	\$0	0	\$0	442	\$11,650
12-Mar-04	209	\$2,688	0	\$0	0	\$0	209	\$2,688
14-Mar-04	-2	\$289	0	\$0	0	\$0	-2	\$289
15-Mar-04	208	\$3,917	0	\$0	0	\$0	208	\$3,917
16-Mar-04	397	\$15,732	0	\$0	0	\$0	397	\$15,732
17-Mar-04	365	\$14,615	0	\$0	0	\$0	365	\$14,615
18-Mar-04	363	\$5,471	0	\$0	0	\$0	363	\$5,471
21-Mar-04	50	\$9,036	0	\$0	0	\$0	50	\$9,036
22-Mar-04	276	\$7,076	0	\$0	0	\$0	276	\$7,076
23-Mar-04	199	\$2,900	0	\$0	0	\$0	199	\$2,900
24-Mar-04	218	\$2,527	0	\$0	0	\$0	218	\$2,527
25-Mar-04	293	\$9,992	0	\$0	0	\$0	293	\$9,992
26-Mar-04	180	\$555	0	\$0	0	\$0	180	\$555
1-Apr-04	0	\$0	0	\$0	7	\$597	7	\$597
2-Apr-04	0	\$0	0	\$0	28	\$3,297	28	\$3,297
5-Apr-04	0	\$0	0	\$0	39	\$3,364	39	\$3,364
7-Apr-04	0	\$0	0	\$0	0	\$31	0	\$31
8-Apr-04	0	\$0	0	\$0	18	\$1,691	18	\$1,691
11-Apr-04	0	\$0	0	\$0	49	\$5,805	49	\$5,805
13-Apr-04	0	\$0	0	\$0	72	\$6,658	72	\$6,658
19-Apr-04	168	\$962	0	\$0	0	\$0	168	\$962
20-Apr-04	414	\$9,243	0	\$0	13	\$1,444	427	\$10,687
21-Apr-04	273	\$8,944	0	\$0	0	\$0	273	\$8,944
22-Apr-04	211	\$4,413	0	\$0	0	\$0	211	\$4,413
23-Apr-04	582	\$8,538	0	\$0	0	\$0	582	\$8,538
24-Apr-04	90	\$2,592	0	\$0	0	\$0	90	\$2,592
25-Apr-04	30	\$960	0	\$0	0	\$0	30	\$960
26-Apr-04	1,206	\$17,108	0	\$0	0	\$0	1,206	\$17,108
27-Apr-04	1,065	\$1,478	0	\$0	0	\$0	1,065	\$1,478
28-Apr-04	1,495	\$11,597	0	\$0	0	\$0	1,495	\$11,597
29-Apr-04	1,151	\$15,201	0	\$0	0	\$0	1,151	\$15,201
30-Apr-04	675	\$5,862	0	\$0	0	\$0	675	\$5,862
1-May-04	126	\$11,577	0	\$0	123	\$11,499	249	\$23,076
2-May-04	35	\$2,669	0	\$0	0	\$0	35	\$2,669
3-May-04	188	\$2,656	0	\$0	0	\$0	188	\$2,656
4-May-04	117	\$634	0	\$0	0	\$0	117	\$634
5-May-04	116	\$2,322	0	\$0	0	\$0	116	\$2,322
6-May-04	111	\$4,912	0	\$0	0	\$0	111	\$4,912
7-May-04	65	\$1,570	0	\$0	0	\$0	65	\$1,570
9-May-04	1	\$121	0	\$0	0	\$0	1	\$121
10-May-04	21	\$1,866	0	\$0	0	\$0	21	\$1,866
11-May-04	115	\$6,038	0	\$0	0	\$0	115	\$6,038

Table 8: 2004 Total Daily Reductions

Table 8: 2004 Total Daily Reductions								
	Real-Time		Day-Ahead		Pilot Program		Totals	
Date	RT MWh	RT Credits	DA MWh	DA Credits	MWh	Credits	MWh	Credits
12-May-04	325	\$17,811	0	\$0	0	\$0	325	\$17,811
13-May-04	304	\$17,341	0	\$0	0	\$0	304	\$17,341
14-May-04	76	\$2,999	0	\$0	0	\$0	76	\$2,999
15-May-04	12	\$1,229	0	\$0	0	\$0	12	\$1,229
16-May-04	18	\$1,787	0	\$0	0	\$0	18	\$1,787
17-May-04	10	\$27	0	\$0	0	\$0	10	\$27
18-May-04	23	\$2,189	0	\$0	0	\$0	23	\$2,189
19-May-04	11	\$848	0	\$0	0	\$0	11	\$848
20-May-04	145	\$8,125	0	\$0	0	\$0	145	\$8,125
21-May-04	128	\$6,860	0	\$0	0	\$0	128	\$6,860
22-May-04	21	\$2,094	0	\$0	0	\$0	21	\$2,094
23-May-04	23	\$2,656	0	\$0	0	\$0	23	\$2,656
24-May-04	58	\$3,324	0	\$0	14	\$1,538	71	\$4,862
25-May-04	51	\$3,602	0	\$0	0	\$0	51	\$3,602
26-May-04	80	\$3,990	0	\$0	0	\$0	80	\$3,990
27-May-04	106	\$8,822	0	\$0	0	\$0	106	\$8,822
28-May-04	118	\$6,872	0	\$0	0	\$0	118	\$6,872
29-May-04	30	\$623	0	\$0	0	\$0	30	\$623
31-May-04	4	\$342	0	\$0	0	\$0	4	\$342
1-Jun-04	4	\$400	0	\$0	0	\$0	4	\$400
2-Jun-04	10	\$571	0	\$0	0	\$0	10	\$571
3-Jun-04	31	\$2,032	0	\$0	5	\$544	36	\$2,577
4-Jun-04	89	\$4,312	0	\$0	0	\$0	89	\$4,312
6-Jun-04	1	\$17	0	\$0	0	\$0	1	\$17
7-Jun-04	43	\$3,521	0	\$0	46	\$5,845	89	\$9,366
8-Jun-04	186	\$10,478	0	\$0	4	\$374	190	\$10,852
9-Jun-04	165	\$7,654	179	\$7,961	80	\$7,900	424	\$23,516
10-Jun-04	43	\$3,033	0	\$0	3	\$403	46	\$3,436
11-Jun-04	3	\$350	0	\$0	0	\$0	3	\$350
12-Jun-04	1	\$16	0	\$0	0	\$0	1	\$16
14-Jun-04	610	\$27,176	0	\$0	126	\$11,103	735	\$38,279
15-Jun-04	706	\$18,949	0	\$0	30	\$2,883	735	\$21,832
16-Jun-04	404	\$7,130	0	\$0	8	\$671	412	\$7,801
17-Jun-04	804	\$28,894	0	\$0	37	\$3,450	841	\$32,344
18-Jun-04	1,069	\$39,826	0	\$0	40	\$4,640	1,109	\$44,466
19-Jun-04	171	\$7,245	0	\$0	0	\$0	171	\$7,245
20-Jun-04	197	\$1,963	0	\$0	0	\$0	197	\$1,963
21-Jun-04	126	\$239	0	\$0	0	\$0	126	\$239
22-Jun-04	332	\$7,095	0	\$0	0	\$0	332	\$7,095
23-Jun-04	45	\$2,553	0	\$0	0	\$0	45	\$2,553
24-Jun-04	65	\$6,025	0	\$0	6	\$584	71	\$6,609
25-Jun-04	34	\$2,745	0	\$0	0	\$0	34	\$2,745
26-Jun-04	5	\$102	0	\$0	0	\$0	5	\$102
27-Jun-04	3	\$310	0	\$0	0	\$0	3	\$310
28-Jun-04	8	\$382	0	\$0	0	\$0	8	\$382
29-Jun-04	1	\$0	0	\$0	0	\$0	1	\$0
30-Jun-04	17	\$1,208	0	\$0	0	\$0	17	\$1,208

Table 8: 2004 Total Daily Reductions

Table 8: 2004 Total Daily Reductions								
	Real-Time		Day-Ahead		Pilot Program		Totals	
Date	RT MWh	RT Credits	DA MWh	DA Credits	MWh	Credits	MWh	Credits
1-Jul-04	59	\$3,126	0	\$0	36	\$3,387	96	\$6,512
2-Jul-04	28	\$3,673	0	\$0	28	\$3,292	55	\$6,965
3-Jul-04	10	\$833	0	\$0	0	\$0	10	\$833
5-Jul-04	23	\$3,293	0	\$0	0	\$0	23	\$3,293
6-Jul-04	82	\$3,516	0	\$0	16	\$1,693	99	\$5,209
7-Jul-04	11	\$829	0	\$0	8	\$1,024	19	\$1,853
8-Jul-04	90	\$4,433	0	\$0	9	\$894	99	\$5,327
9-Jul-04	44	\$2,093	0	\$0	0	\$0	44	\$2,093
10-Jul-04	1	\$63	0	\$0	0	\$0	1	\$63
11-Jul-04	0	\$0	0	\$0	83	\$7,291	83	\$7,291
12-Jul-04	0	\$0	0	\$0	0	\$0	0	\$0
13-Jul-04	74	\$3,246	0	\$0	35	\$2,787	109	\$6,032
14-Jul-04	21	\$849	0	\$0	0	\$0	21	\$849
15-Jul-04	30	\$1,560	0	\$0	0	\$0	30	\$1,560
16-Jul-04	21	\$1,464	0	\$0	0	\$0	21	\$1,464
17-Jul-04	13	\$1,131	0	\$0	0	\$0	13	\$1,131
18-Jul-04	168	\$5,708	0	\$0	0	\$0	168	\$5,708
19-Jul-04	155	\$8,030	0	\$0	0	\$0	155	\$8,030
20-Jul-04	58	\$4,438	0	\$0	79	\$6,958	137	\$11,396
21-Jul-04	14	\$341	0	\$0	38	\$3,536	52	\$3,877
22-Jul-04	90	\$7,435	0	\$0	58	\$5,948	148	\$13,383
23-Jul-04	75	\$4,323	0	\$0	0	\$0	75	\$4,323
24-Jul-04	14	\$119	0	\$0	0	\$0	14	\$119
26-Jul-04	38	\$2,139	0	\$0	0	\$0	38	\$2,139
27-Jul-04	12	\$624	0	\$0	0	\$0	12	\$624
28-Jul-04	51	\$1,913	0	\$0	0	\$0	51	\$1,913
29-Jul-04	11	\$316	0	\$0	0	\$0	11	\$316
30-Jul-04	109	\$6,398	0	\$0	25	\$2,887	134	\$9,285
31-Jul-04	44	\$2,851	0	\$0	0	\$0	44	\$2,851
Maximum								
	1,495	\$39,826	179	\$7,961	126	\$11,499	1,495	\$44,466
Hourly Average								
	13	\$414	0	\$3	1	\$70	14	\$488
Total								
	29,920	\$931,577	179	\$7,961	1,620	\$157,034	31,719	\$1,096,573

Table 9: 2004 Economic Program Reductions under \$75/MWh

	Real- Time			Day- Ahead			Pilot			Totals		
	MWh	Credits	Hours	MWh	Credits	Hours	MWh	Credits	Hours	MWh	Credits	Hours
Total	25,491	\$510,662	2,457	122	\$5,199	35	102	\$9,656	20	25,715	\$525,517	2,512
Max	22,738	\$464,633	1,715	122	\$5,199	35	70	\$6,717	5	22,748	\$465,506	1,720
Avg	1,961	\$39,282	189	9	\$400	3	8	\$743	2	1,978	\$40,424	193

Table 9: 2004 Economic Program Reductions equal and above \$75/MWh

	Real- Time			Day- Ahead			Pilot			Totals		
	MWh	Credits	Hours	MWh	Credits	Hours	MWh	Credits	Hours	MWh	Credits	Hours
Total	4,428	\$420,915	1,292	58	\$2,763	15	1,518	\$147,379	304	6,004	\$571,056	1,611
Max	3,281	\$302,156	845	58	\$2,763	15	868	\$80,636	93	3,377	\$311,426	845
Avg	341	\$32,378	99	4	\$213	1	117	\$11,337	23	462	\$43,927	124

Table 9: 2004 Total Economic Program Reductions

	Real- Time			Day- Ahead			Pilot			Totals		
	MWh	Credits	Hours	MWh	Credits	Hours	MWh	Credits	Hours	MWh	Credits	Hours
Total	29,920	\$931,577	3,749	179	\$7,961	50	1,620	\$157,034	324	31,719	\$1,096,573	4,123

Table 10: 2004 Economic Program Zonal Reductions

Table 10: 2004 Economic Program Zonal Reductions												
	Real- Time			Day- Ahead			Pilot			Totals		
	MWh	Credits	Hours	MWh	Credits	Hours	MWh	Credits	Hours	MWh	Credits	Hours
AECO	0	\$0	0	0	\$0	0	0	\$0	0	0	\$0	0
APS	26,019	\$766,790	2,034	0	\$0	0	106	\$10,142	52	26,125	\$776,932	2,086
BGE	141	\$6,746	75	0	\$0	0	0	\$0	0	141	\$6,746	75
COMED	0	\$0	0	0	\$0	0	0	\$0	0	0	\$0	0
DPL	13	\$817	19	179	\$7,961	50	0	\$0	0	192	\$8,779	69
JCPL	12	\$1,420	10	0	\$0	0	187	\$21,595	97	199	\$23,015	107
METED	57	\$480	96	0	\$0	0	375	\$36,682	83	432	\$37,162	179
PECO	15	\$1,389	16	0	\$0	0	0	\$0	0	15	\$1,389	16
PENELEC	0	\$0	0	0	\$0	0	938	\$87,353	45	938	\$87,353	45
PEPCO	0	\$0	0	0	\$0	0	0	\$0	0	0	\$0	0
PPL	2,861	\$77,227	296	0	\$0	0	14	\$1,263	47	2,874	\$78,491	343
PSEG	803	\$76,707	1,203	0	\$0	0	0	\$0	0	803	\$76,707	1,203
RECO	0	\$0	0	0	\$0	0	0	\$0	0	0	\$0	0
Total												
	29,920	\$931,577	3,749	179	\$7,961	50	1,620	\$157,034	324	31,719	\$1,096,573	4,123
Max												
	26,019	\$766,790	2,034	179	\$7,961	50	938	\$87,353	97	26,125	\$776,932	2,086
Avg												
	2,302	\$71,660	288	14	\$612	4	125	\$12,080	25	2,440	\$84,352	317

2004 Figures

(Includes Data for January through July of 2004)

Figure 1: 2004 Daily Economic Reductions and Credits

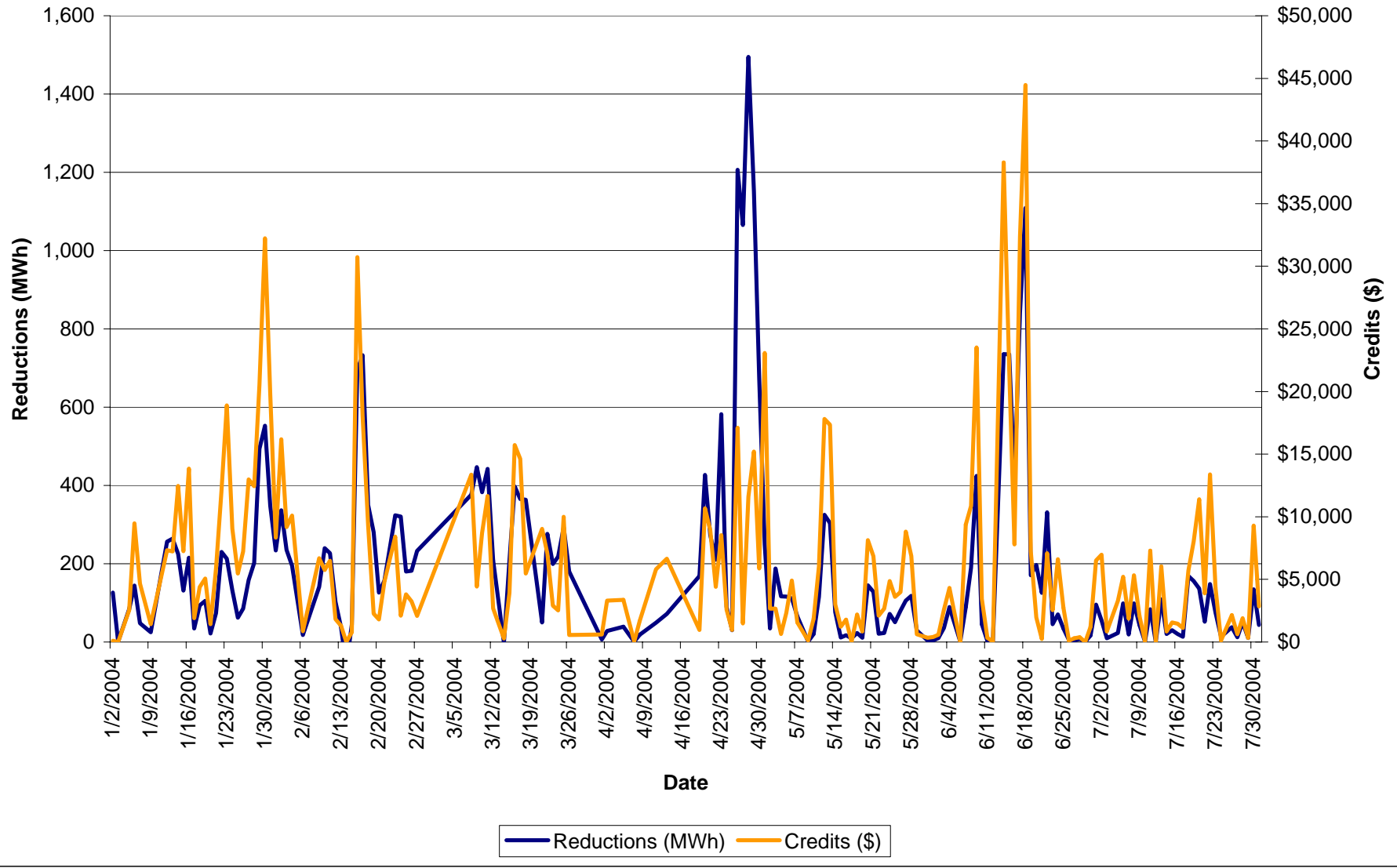


Figure 2: 2004 Economic Program Reductions vs. LMP

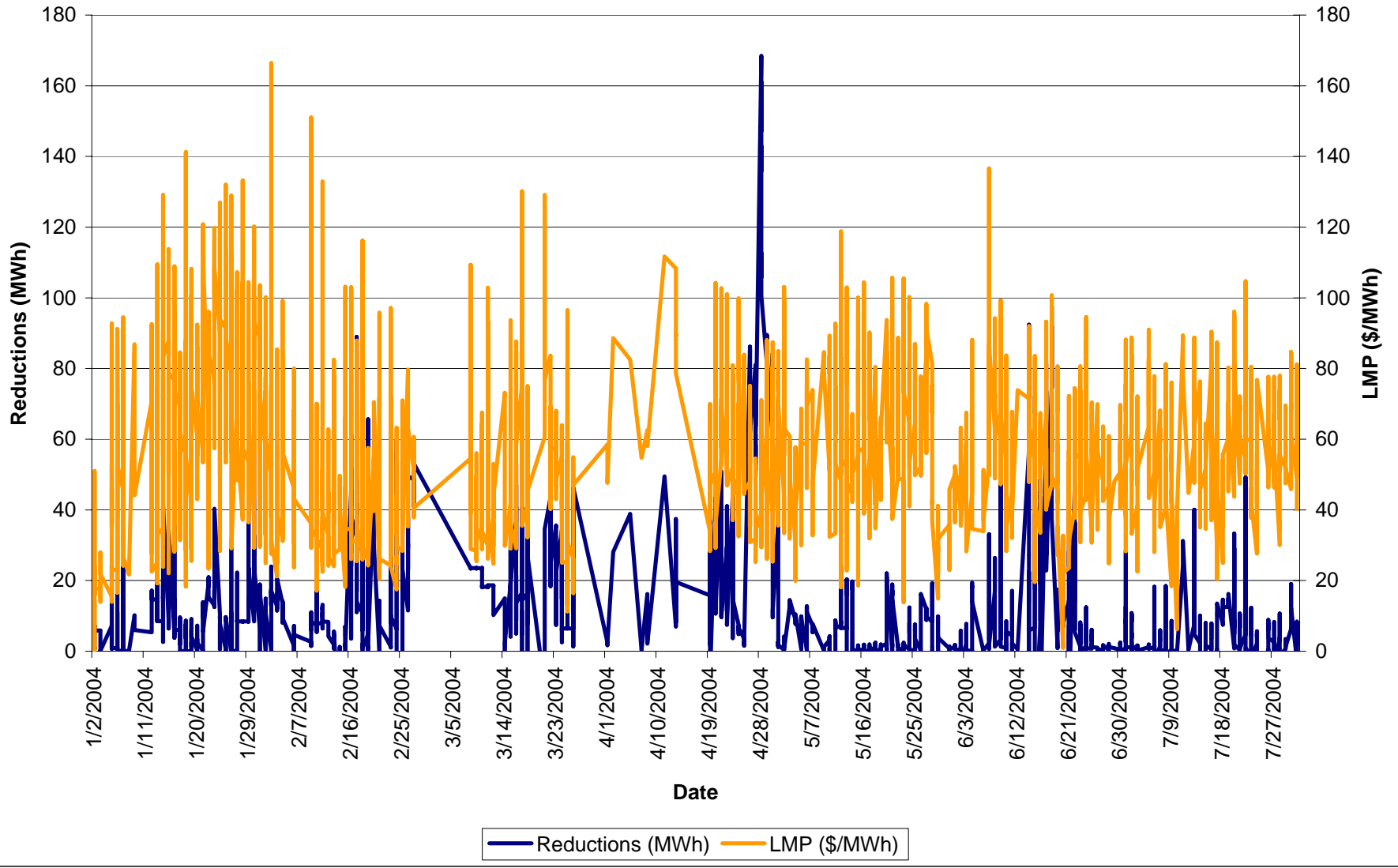


Figure 3: 2004 Economic Program Reductions vs. Load

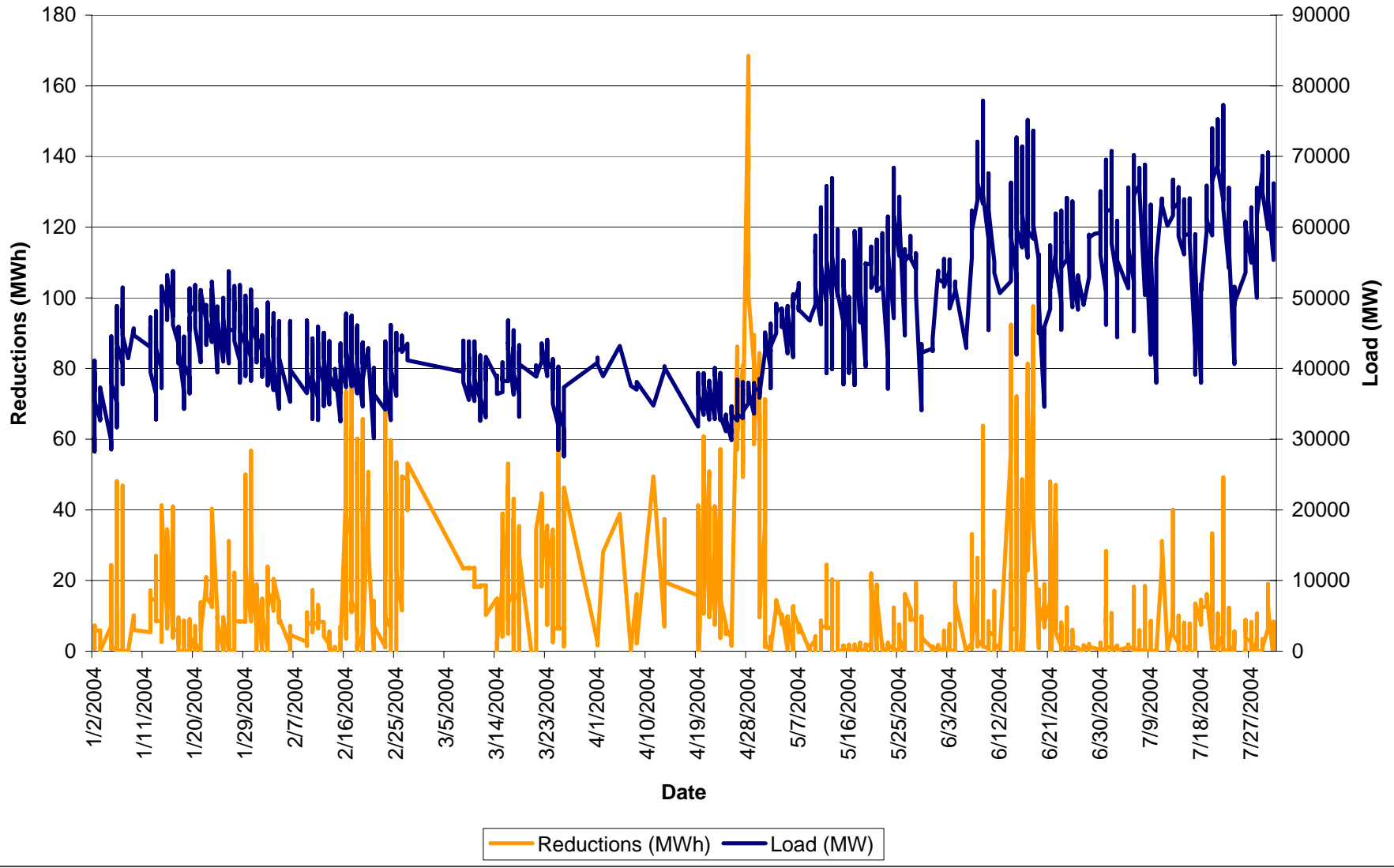


Figure 4: June-July Average PJM RTO System Aggregate Supply Curve

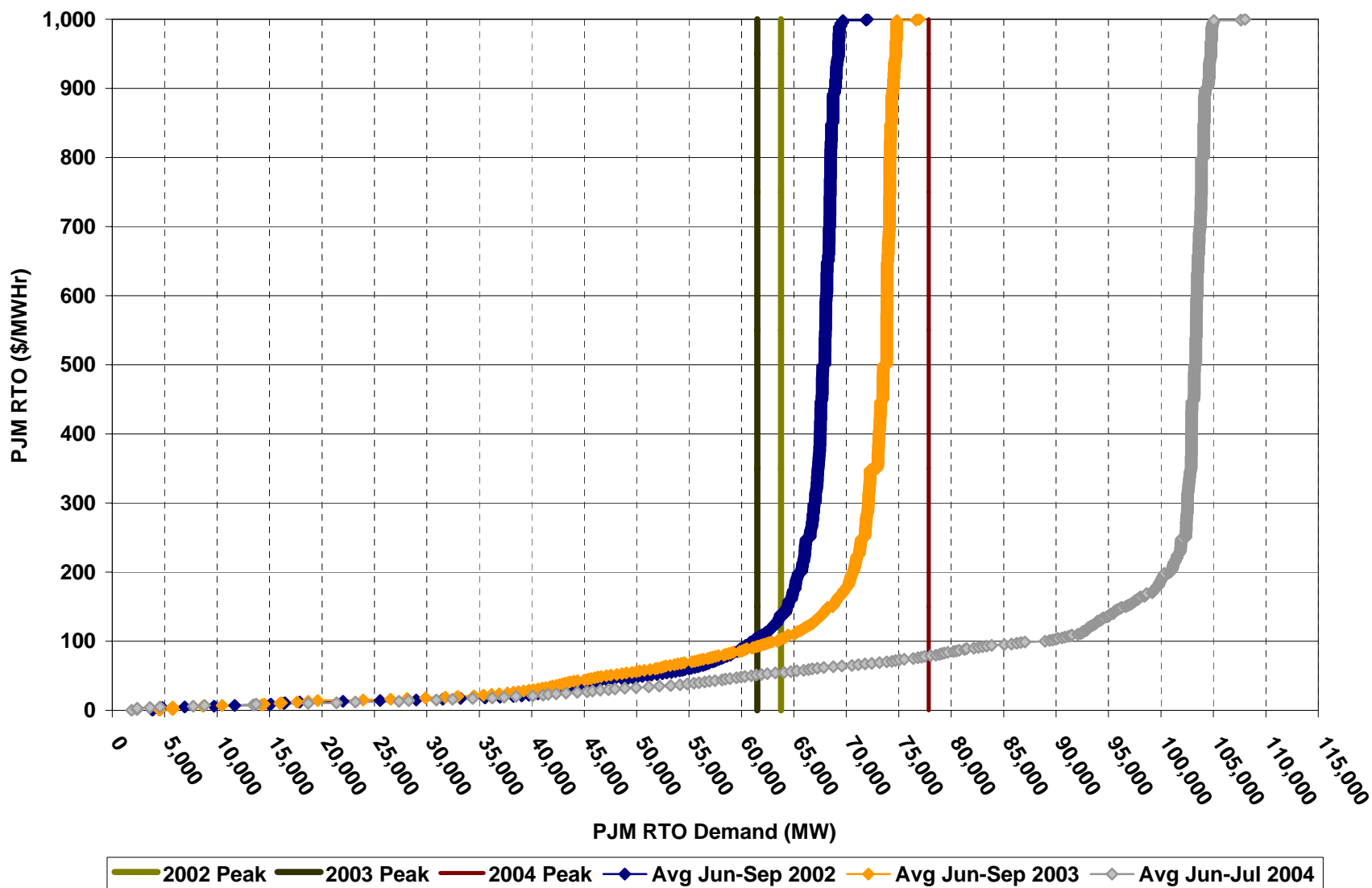


Figure 5: 2004 Average Hourly Reductions vs. PJM's Real-Time Hourly LMPs

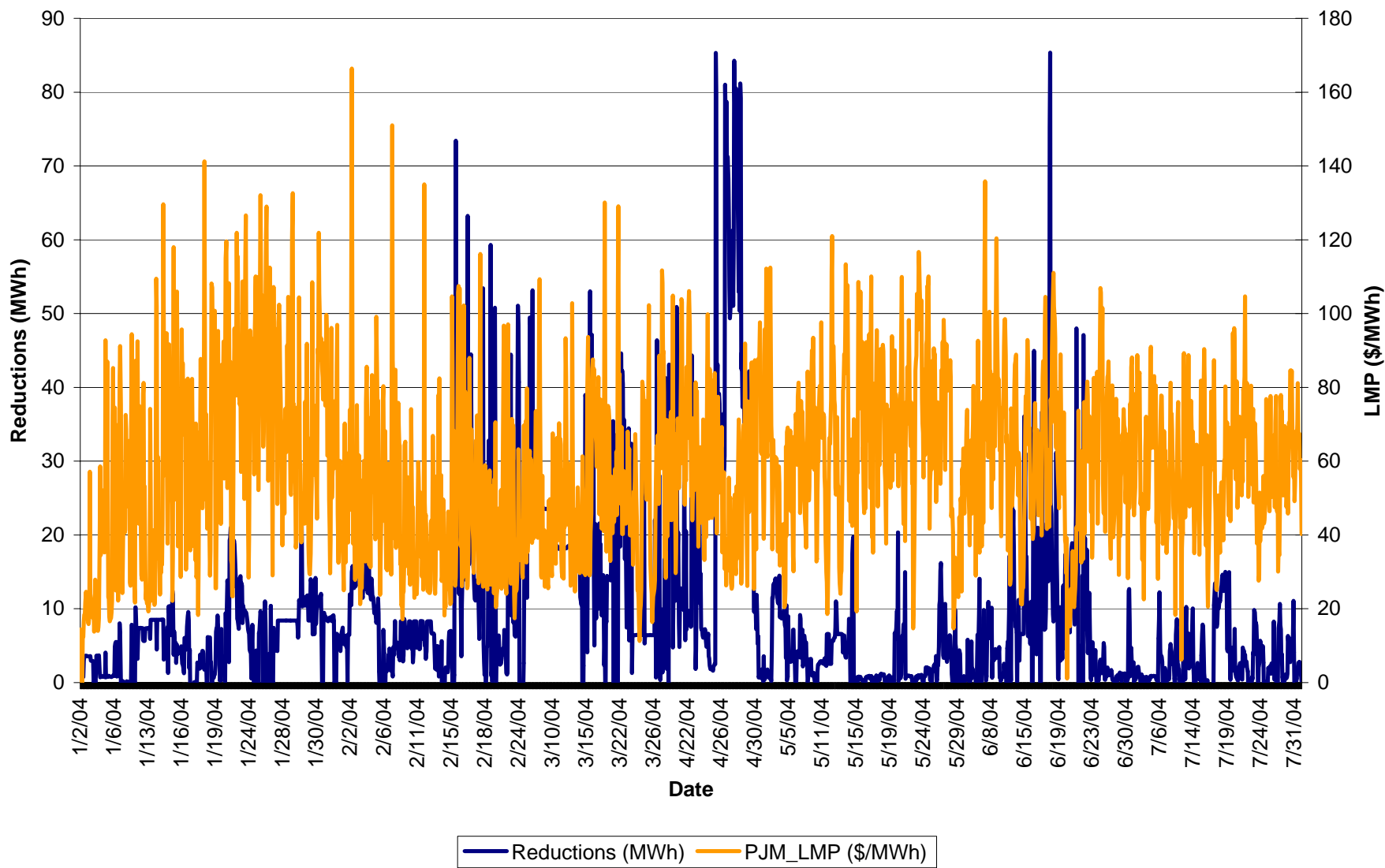


Figure 6: 2004 Frequency Distribution by Hours of Economic Program LMPs under \$75/MWh

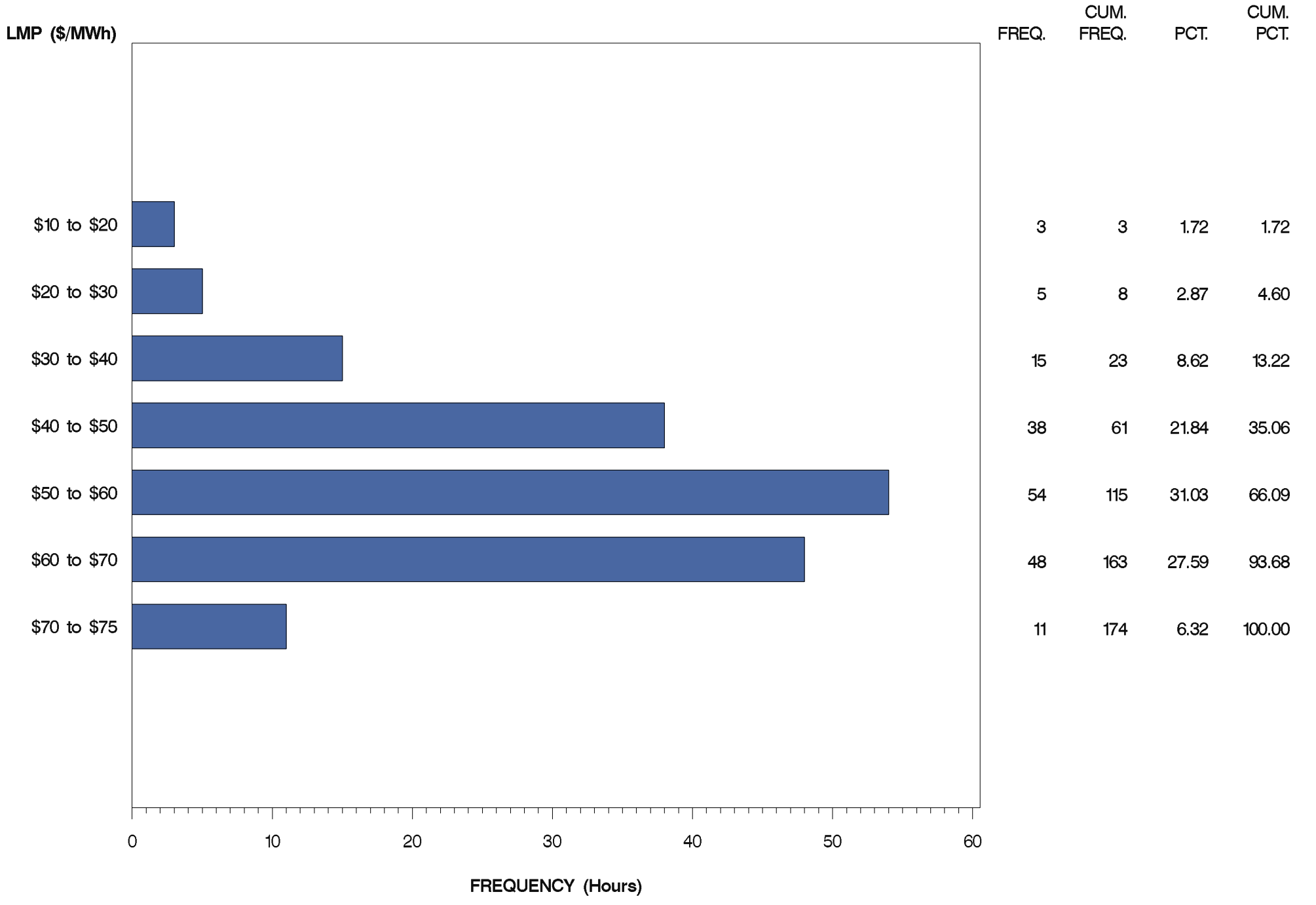


Figure 7: 2004 Frequency Distribution by Hours of Economic Program LMPs equal or above \$75/MWh

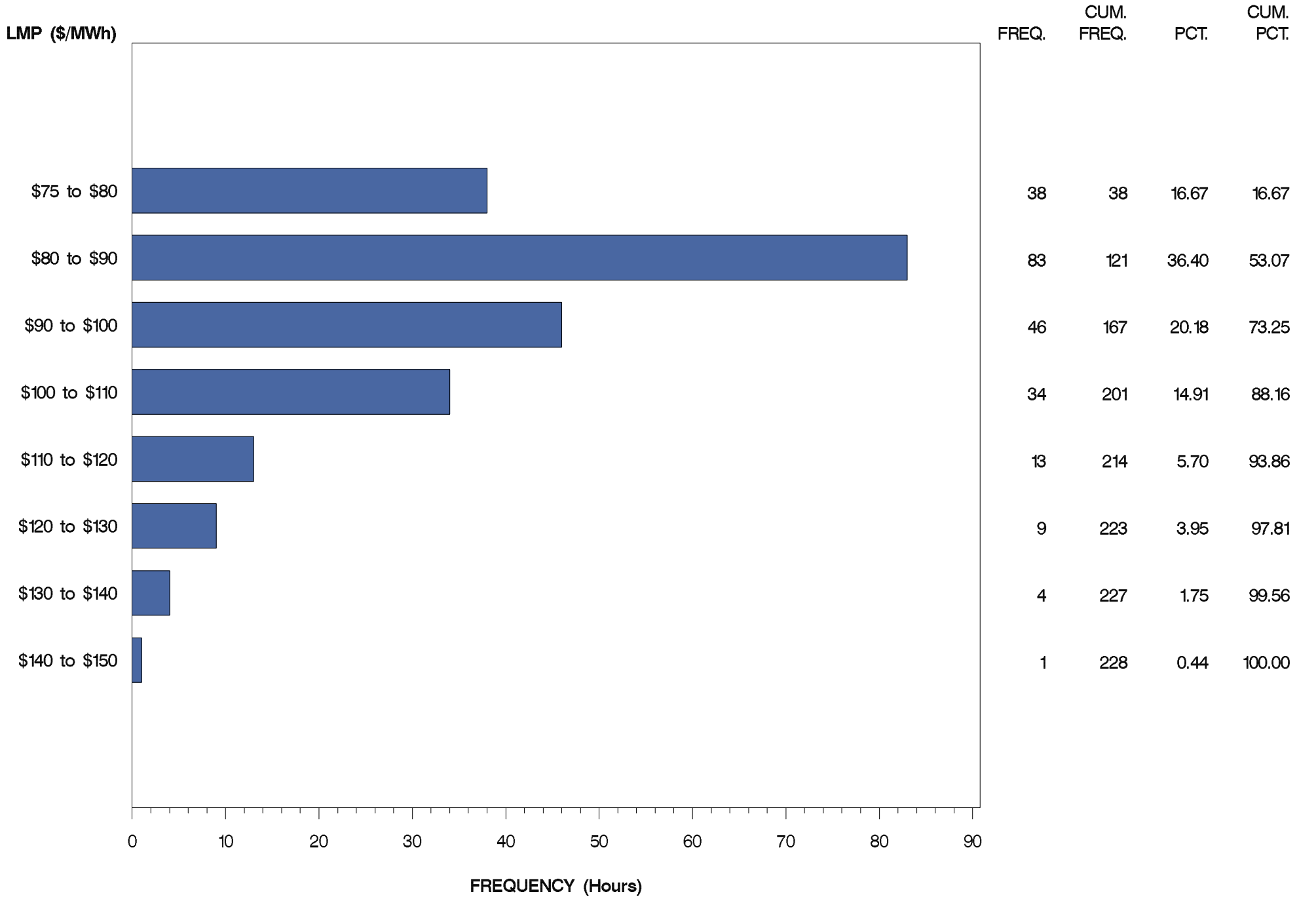


Figure 8:2004 Frequency Distribution of Economic Program LMPs under \$75/MWh over each hour of the day

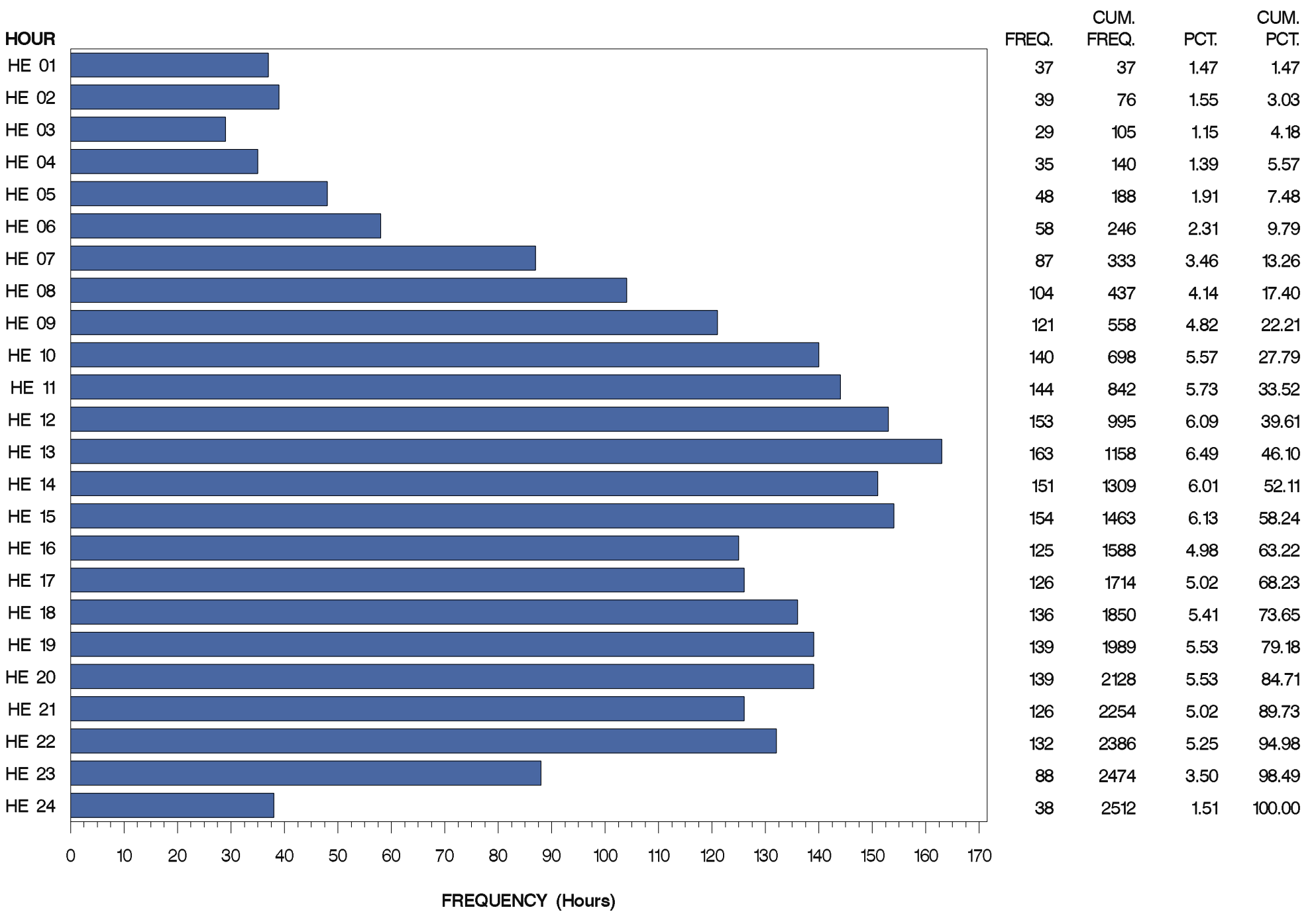


Figure 9:2004 Frequency Distribution of Economic Program LMPs equal and above \$75/MWh over each hour of the day

