

## **Attachment A**

## **2003 Tables**

<b>Table 1: 2003 Pilot Program Reductions</b>		
<b>Daily Reductions</b>		
<b>Date</b>	<b>MWh</b>	<b>Credits</b>
1-Apr-03	166	\$3,249
7-Apr-03	197	\$8,947
9-Apr-03	36	\$555
10-Apr-03	114	\$522
1-May-03	170	\$5,895
11-Jun-03	19	\$1,705
12-Jun-03	8	\$985
18-Jun-03	4	\$345
24-Jun-03	19	\$1,625
25-Jun-03	54	\$5,288
26-Jun-03	33	\$3,661
27-Jun-03	7	\$538
7-Jul-03	44	\$5,789
8-Jul-03	194	\$14,835
11-Jul-03	7	\$617
21-Jul-03	71	\$6,925
22-Jul-03	1	\$82
4-Aug-03	19	\$1,690
8-Aug-03	2	\$196
12-Aug-03	30	\$2,886
13-Aug-03	153	\$13,171
14-Aug-03	169	\$20,827
15-Aug-03	122	\$9,998
20-Aug-03	15	\$1,359
21-Aug-03	159	\$14,791
22-Aug-03	15	\$1,221
28-Aug-03	13	\$1,141
8-Sep-03	4	\$373
9-Oct-03	22	\$2,070
23-Oct-03	34	\$2,892
24-Oct-03	22	\$1,881
5-Nov-03	37	\$3,248
6-Nov-03	39	\$3,118
10-Nov-03	59	\$5,205
11-Nov-03	60	\$5,082
13-Nov-03	104	\$10,070
20-Nov-03	48	\$3,880
24-Nov-03	121	\$12,172
4-Dec-03	5	\$384
9-Dec-03	53	\$5,068
11-Dec-03	77	\$8,657
17-Dec-03	50	\$5,016
<b>Daily Statistics</b>		
<b>Total</b>	2,578	\$197,959
<b>Average</b>	61	\$4,713
<b>Maximum</b>	197	\$20,827
<b>Hourly Statistics</b>		
<b>Average</b>	15	\$1,185
<b>Maximum</b>	49	\$5,185

**Table 2: 2002-2003 Price Impacts**

	<b>ALM</b>	<b>Economic Program</b>	<b>Emergency Program</b>
<b>2002</b>	\$70/MWh	\$50/MWh	\$40/MWh
<b>2003</b>	N/A	\$1/MWh	N/A

**Table 3: 2001 – 2003 Registered Participants in Load Response Programs**

	<b>Economic Program</b>		<b>Emergency Program</b>	
	<b>Sites</b>	<b>MW</b>	<b>Sites</b>	<b>MW</b>
<b>2001</b>		65		155
<b>2002</b>	116	337	61	548
<b>2003</b>	245	724	168	659

**Table 4: 2001 – 2003 Performance of Economic Program Participants**

	<b>Total MWh</b>	<b>Total Payments</b>	<b>\$/MWh</b>
<b>2001</b>	50	\$13,994	\$283
<b>2002</b>	6,462	\$761,977	\$118
<b>2003</b>	19,290	\$827,179	\$43

**Table 5: 2003 Emergency Program and Economic Program Comparison**

	<b>MWh</b>	<b>Credits</b>	<b>Price/MWh</b>
<b>Emergency</b>	47	\$26,613	\$566
<b>Economic</b>	19,290	\$827,179	\$43

**Table 6: 2001 - 2003 Payments Comparison**

	<b>Emergency (\$)</b>	<b>Economic (\$)</b>	<b>Total (\$)</b>
<b>2001</b>	\$287,514	\$13,994	\$301,508
<b>2002</b>	\$282,756	\$761,997	\$1,044,753
<b>2003</b>	\$26,613	\$827,179	\$853,792

**Table 7: Load Response Programs and ALM History**

	<b>1999</b>	<b>2000</b>	<b>2001</b>	<b>2002</b>	<b>2003</b>
<b>ALM Resources (MW)</b>	2,005	1,693	1,962	1,292	1,207
<b>2000 -2001 Pilot Program Resources (MW)</b>	NA	80	220	NA	NA
<b>Load Response Program (MW)</b>	NA	NA	NA	891	1,383
<b>Load Response MW also enrolled in ALM</b>	NA	NA	164	298	445

**Table 8: 2003 Total Daily Reductions**

Date	Economic Program				Emergency Program		Pilot Program		Totals	
	RT MWh	RT Credits	DA MWh	DA Credits	MWh	Credits	MWh	Credits	MWh	Credits
27-Jan-03	50	\$2,980	0	\$0	0	\$0	0	\$0	50	\$2,980
28-Jan-03	85	\$2,787	0	\$0	0	\$0	0	\$0	85	\$2,787
29-Jan-03	24	\$398	0	\$0	0	\$0	0	\$0	24	\$398
3-Mar-03	193	\$24,599	0	\$0	0	\$0	0	\$0	193	\$24,599
6-Mar-03	37	\$4,693	0	\$0	0	\$0	0	\$0	37	\$4,693
7-Mar-03	64	\$4,446	0	\$0	0	\$0	0	\$0	64	\$4,446
10-Mar-03	68	\$7,411	0	\$0	0	\$0	0	\$0	68	\$7,411
11-Mar-03	118	\$7,626	0	\$0	0	\$0	0	\$0	118	\$7,626
12-Mar-03	45	\$1,887	0	\$0	0	\$0	0	\$0	45	\$1,887
13-Mar-03	126	\$3,161	0	\$0	0	\$0	0	\$0	126	\$3,161
21-Mar-03	4	\$88	0	\$0	0	\$0	0	\$0	4	\$88
27-Mar-03	42	\$1,411	0	\$0	0	\$0	0	\$0	42	\$1,411
1-Apr-03	0	\$0	0	\$0	0	\$0	166	\$3,249	166	\$3,249
7-Apr-03	0	\$0	0	\$0	0	\$0	197	\$8,947	197	\$8,947
9-Apr-03	2	\$136	0	\$0	0	\$0	36	\$555	38	\$691
10-Apr-03	0	\$0	0	\$0	0	\$0	114	\$522	114	\$522
11-Apr-03	1	\$34	0	\$0	0	\$0	0	\$0	1	\$34
21-Apr-03	1	\$11	0	\$0	0	\$0	0	\$0	1	\$11
23-Apr-03	1	\$40	0	\$0	0	\$0	0	\$0	1	\$40
1-May-03	2	\$19	0	\$0	0	\$0	170	\$5,895	172	\$5,914
2-May-03	2	\$113	0	\$0	0	\$0	0	\$0	2	\$113
9-May-03	3	\$129	0	\$0	0	\$0	0	\$0	3	\$129
14-May-03	2	\$1	0	\$0	0	\$0	0	\$0	2	\$1
19-May-03	2	\$13	0	\$0	0	\$0	0	\$0	2	\$13
22-May-03	1	\$0	0	\$0	0	\$0	0	\$0	1	\$0
11-Jun-03	0	\$0	0	\$0	0	\$0	19	\$1,705	19	\$1,705
12-Jun-03	0	\$0	0	\$0	0	\$0	8	\$985	8	\$985
14-Jun-03	3	\$219	0	\$0	0	\$0	0	\$0	3	\$219
18-Jun-03	0	\$0	0	\$0	0	\$0	4	\$345	4	\$345
19-Jun-03	41	\$82	0	\$0	0	\$0	0	\$0	41	\$82
23-Jun-03	75	\$528	0	\$0	0	\$0	0	\$0	75	\$528
24-Jun-03	129	\$5,196	0	\$0	0	\$0	19	\$1,625	148	\$6,821
25-Jun-03	346	\$13,963	0	\$0	0	\$0	54	\$5,288	400	\$19,251
26-Jun-03	778	\$36,264	84	\$9,988	0	\$0	33	\$3,661	895	\$49,912
27-Jun-03	286	\$3,740	0	\$0	0	\$0	7	\$538	293	\$4,277
29-Jun-03	0	\$24	0	\$0	0	\$0	0	\$0	0	\$24
30-Jun-03	283	\$31,860	0	\$0	0	\$0	0	\$0	283	\$31,860
1-Jul-03	0	\$1	0	\$0	0	\$0	0	\$0	0	\$1
2-Jul-03	290	\$6,111	0	\$0	0	\$0	0	\$0	290	\$6,111
3-Jul-03	0	\$2	0	\$0	0	\$0	0	\$0	0	\$2
4-Jul-03	337	\$6,640	0	\$0	0	\$0	0	\$0	337	\$6,640
5-Jul-03	362	\$18,047	4	\$260	0	\$0	0	\$0	365	\$18,307
6-Jul-03	39	\$4,057	0	\$0	0	\$0	0	\$0	39	\$4,057
7-Jul-03	557	\$26,049	0	\$0	0	\$0	44	\$5,789	602	\$31,839
8-Jul-03	280	\$5,558	35	\$3,101	0	\$0	194	\$14,835	510	\$23,493
9-Jul-03	326	\$6,454	0	\$0	0	\$0	0	\$0	326	\$6,454
10-Jul-03	305	\$3,519	48	\$1,277	0	\$0	0	\$0	354	\$4,796
11-Jul-03	262	\$5,278	0	\$0	0	\$0	7	\$617	270	\$5,896
13-Jul-03	68	\$2,337	0	\$0	0	\$0	0	\$0	68	\$2,337
14-Jul-03	282	\$7,101	0	\$0	0	\$0	0	\$0	282	\$7,101
15-Jul-03	285	\$3,785	0	\$0	0	\$0	0	\$0	285	\$3,785
16-Jul-03	171	\$8,018	0	\$0	0	\$0	0	\$0	171	\$8,018
17-Jul-03	62	\$940	0	\$0	0	\$0	0	\$0	62	\$940
18-Jul-03	258	\$637	0	\$0	0	\$0	0	\$0	258	\$637

**Table 8: 2003 Total Daily Reductions**

Date	Economic Program				Emergency Program		Pilot Program		Totals	
	RT MWh	RT Credits	DA MWh	DA Credits	MWh	Credits	MWh	Credits	MWh	Credits
19-Jul-03	60	\$1,576	0	\$0	0	\$0	0	\$0	60	\$1,576
20-Jul-03	128	\$11,147	0	\$0	0	\$0	0	\$0	128	\$11,147
21-Jul-03	276	\$30,521	0	\$0	0	\$0	71	\$6,925	347	\$37,446
22-Jul-03	133	\$5,736	0	\$0	0	\$0	1	\$82	134	\$5,817
23-Jul-03	130	\$4,001	0	\$0	0	\$0	0	\$0	130	\$4,001
24-Jul-03	78	\$3,374	0	\$0	0	\$0	0	\$0	78	\$3,374
25-Jul-03	126	\$3,020	0	\$0	0	\$0	0	\$0	126	\$3,020
26-Jul-03	16	\$295	0	\$0	0	\$0	0	\$0	16	\$295
27-Jul-03	14	\$254	0	\$0	0	\$0	0	\$0	14	\$254
28-Jul-03	187	\$3,680	0	\$0	0	\$0	0	\$0	187	\$3,680
29-Jul-03	194	\$4,892	0	\$0	0	\$0	0	\$0	194	\$4,892
30-Jul-03	89	\$1,369	0	\$0	0	\$0	0	\$0	89	\$1,369
31-Jul-03	41	\$1,072	0	\$0	0	\$0	0	\$0	41	\$1,072
1-Aug-03	97	\$4,254	0	\$0	0	\$0	0	\$0	97	\$4,254
4-Aug-03	83	\$1,056	0	\$0	0	\$0	19	\$1,690	102	\$2,747
5-Aug-03	71	\$645	0	\$0	0	\$0	0	\$0	71	\$645
6-Aug-03	60	\$1,050	0	\$0	0	\$0	0	\$0	60	\$1,050
7-Aug-03	47	\$738	0	\$0	0	\$0	0	\$0	47	\$738
8-Aug-03	51	\$1,662	0	\$0	0	\$0	2	\$196	53	\$1,858
11-Aug-03	22	\$161	0	\$0	0	\$0	0	\$0	22	\$161
12-Aug-03	162	\$6,941	0	\$0	0	\$0	30	\$2,886	192	\$9,827
13-Aug-03	388	\$20,896	0	\$0	0	\$0	153	\$13,171	541	\$34,067
14-Aug-03	585	\$38,430	0	\$0	0	\$0	169	\$20,827	755	\$59,257
15-Aug-03	664	\$34,062	0	\$0	47	\$26,613	122	\$9,998	833	\$70,673
16-Aug-03	268	\$1,292	0	\$0	0	\$0	0	\$0	268	\$1,292
18-Aug-03	53	\$1,960	0	\$0	0	\$0	0	\$0	53	\$1,960
19-Aug-03	42	\$489	0	\$0	0	\$0	0	\$0	42	\$489
20-Aug-03	110	\$6,291	0	\$0	0	\$0	15	\$1,359	125	\$7,649
21-Aug-03	332	\$24,382	0	\$0	0	\$0	159	\$14,791	491	\$39,173
22-Aug-03	580	\$29,201	0	\$0	0	\$0	15	\$1,221	595	\$30,423
23-Aug-03	158	\$3,495	0	\$0	0	\$0	0	\$0	158	\$3,495
24-Aug-03	81	\$529	0	\$0	0	\$0	0	\$0	81	\$529
26-Aug-03	67	\$2,018	0	\$0	0	\$0	0	\$0	67	\$2,018
27-Aug-03	73	\$1,319	0	\$0	0	\$0	0	\$0	73	\$1,319
28-Aug-03	39	\$2,884	0	\$0	0	\$0	13	\$1,141	52	\$4,025
29-Aug-03	400	\$18,741	0	\$0	0	\$0	0	\$0	400	\$18,741
1-Sep-03	61	\$183	0	\$0	0	\$0	0	\$0	61	\$183
2-Sep-03	33	\$489	0	\$0	0	\$0	0	\$0	33	\$489
4-Sep-03	74	\$1,401	0	\$0	0	\$0	0	\$0	74	\$1,401
8-Sep-03	0	\$32	0	\$0	0	\$0	4	\$373	4	\$405
10-Sep-03	11	\$272	0	\$0	0	\$0	0	\$0	11	\$272
16-Sep-03	22	\$528	0	\$0	0	\$0	0	\$0	22	\$528
22-Sep-03	106	\$1,430	0	\$0	0	\$0	0	\$0	106	\$1,430
23-Sep-03	52	\$308	0	\$0	0	\$0	0	\$0	52	\$308
9-Oct-03	0	\$0	0	\$0	0	\$0	22	\$2,070	22	\$2,070
23-Oct-03	4	\$124	0	\$0	0	\$0	34	\$2,892	38	\$3,016
24-Oct-03	0	\$0	0	\$0	0	\$0	22	\$1,881	22	\$1,881
5-Nov-03	0	\$0	0	\$0	0	\$0	37	\$3,248	37	\$3,248
6-Nov-03	0	\$0	0	\$0	0	\$0	39	\$3,118	39	\$3,118
10-Nov-03	199	\$6,417	0	\$0	0	\$0	59	\$5,205	258	\$11,622
11-Nov-03	107	\$6,408	0	\$0	0	\$0	60	\$5,082	167	\$11,490
12-Nov-03	78	\$402	0	\$0	0	\$0	0	\$0	78	\$402
13-Nov-03	185	\$13,550	0	\$0	0	\$0	104	\$10,070	290	\$23,620
14-Nov-03	322	\$3,463	0	\$0	0	\$0	0	\$0	322	\$3,463

**Table 8: 2003 Total Daily Reductions**

Date	Economic Program				Emergency Program		Pilot Program		Totals	
	RT MWh	RT Credits	DA MWh	DA Credits	MWh	Credits	MWh	Credits	MWh	Credits
15-Nov-03	141	\$525	0	\$0	0	\$0	0	\$0	141	\$525
16-Nov-03	18	\$221	0	\$0	0	\$0	0	\$0	18	\$221
17-Nov-03	160	\$952	0	\$0	0	\$0	0	\$0	160	\$952
18-Nov-03	141	\$2,092	0	\$0	0	\$0	0	\$0	141	\$2,092
19-Nov-03	141	\$2,768	0	\$0	0	\$0	0	\$0	141	\$2,768
20-Nov-03	0	\$2	0	\$0	0	\$0	48	\$3,880	48	\$3,883
24-Nov-03	0	\$0	0	\$0	0	\$0	121	\$12,172	121	\$12,172
25-Nov-03	2	\$155	0	\$0	0	\$0	0	\$0	2	\$155
29-Nov-03	16	\$69	0	\$0	0	\$0	0	\$0	16	\$69
3-Dec-03	2	\$110	0	\$0	0	\$0	0	\$0	2	\$110
4-Dec-03	7	\$74	0	\$0	0	\$0	5	\$384	11	\$458
8-Dec-03	15	\$375	0	\$0	0	\$0	0	\$0	15	\$375
9-Dec-03	110	\$3,145	0	\$0	0	\$0	53	\$5,068	163	\$8,213
10-Dec-03	218	\$5,675	0	\$0	0	\$0	0	\$0	218	\$5,675
11-Dec-03	162	\$8,210	0	\$0	0	\$0	77	\$8,657	239	\$16,867
12-Dec-03	144	\$3,470	0	\$0	0	\$0	0	\$0	144	\$3,470
13-Dec-03	77	\$1,458	0	\$0	0	\$0	0	\$0	77	\$1,458
14-Dec-03	2	\$56	0	\$0	0	\$0	0	\$0	2	\$56
15-Dec-03	204	\$3,911	0	\$0	0	\$0	0	\$0	204	\$3,911
16-Dec-03	103	\$1,369	0	\$0	0	\$0	0	\$0	103	\$1,369
17-Dec-03	79	\$4,186	0	\$0	0	\$0	50	\$5,016	129	\$9,202
18-Dec-03	65	\$2,028	0	\$0	0	\$0	0	\$0	65	\$2,028
19-Dec-03	170	\$4,089	0	\$0	0	\$0	0	\$0	170	\$4,089
20-Dec-03	31	\$357	0	\$0	0	\$0	0	\$0	31	\$357
21-Dec-03	77	\$137	0	\$0	0	\$0	0	\$0	77	\$137
22-Dec-03	132	\$881	0	\$0	0	\$0	0	\$0	132	\$881
23-Dec-03	132	\$175	0	\$0	0	\$0	0	\$0	132	\$175
24-Dec-03	75	\$9	0	\$0	0	\$0	0	\$0	75	\$9
26-Dec-03	77	\$408	0	\$0	0	\$0	0	\$0	77	\$408
28-Dec-03	0	\$0	0	\$0	0	\$0	0	\$0	0	\$0
29-Dec-03	146	\$675	0	\$0	0	\$0	0	\$0	146	\$675
30-Dec-03	20	\$175	0	\$0	0	\$0	0	\$0	20	\$175
31-Dec-03	19	\$6	0	\$0	0	\$0	0	\$0	19	\$6
<b>Daily Statistics</b>										
<b>Maximum</b>	778	\$38,430	84	\$9,988	47	\$26,613	197	\$20,827	895	\$70,673
<b>Average</b>	117	\$4,359	1	\$104	0	\$189	18	\$1,404	137	\$6,055
<b>Total</b>	16,541	\$614,595	171	\$14,625	47	\$26,613	2,578	\$197,959	19,337	\$853,792
<b>Hourly Statistics</b>										
<b>Maximum</b>	76	\$8,009	16	\$2,058	6	\$2,965	49	\$5,185	114	\$12,574
<b>Average</b>	9	\$333	0	\$8	0	\$14	1	\$107	10	\$463



## **2003 Figures**

Figure 1: 2003 Daily Economic Reductions and Credits

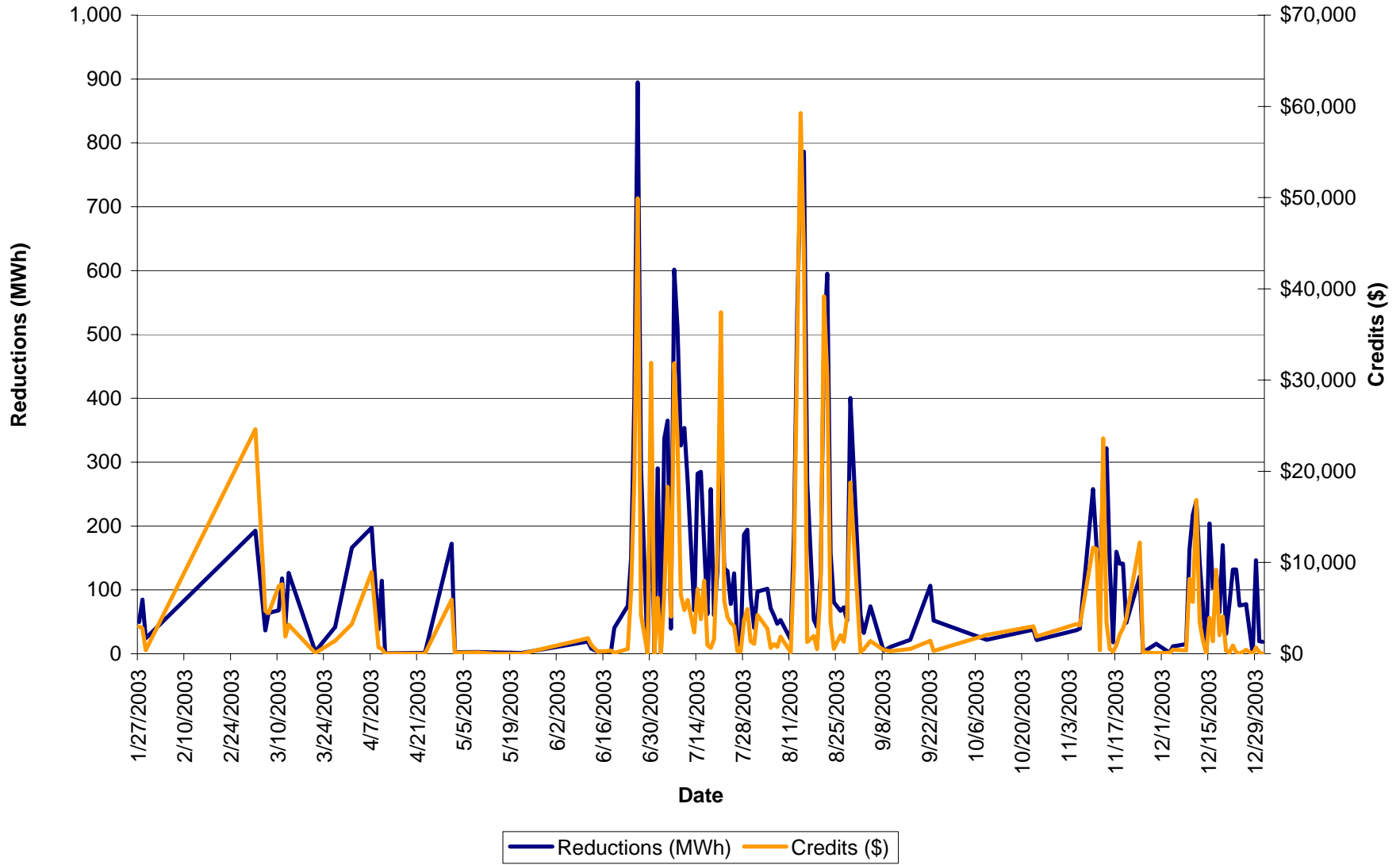


Figure 2: 2003 Economic Program Reductions vs. LMP

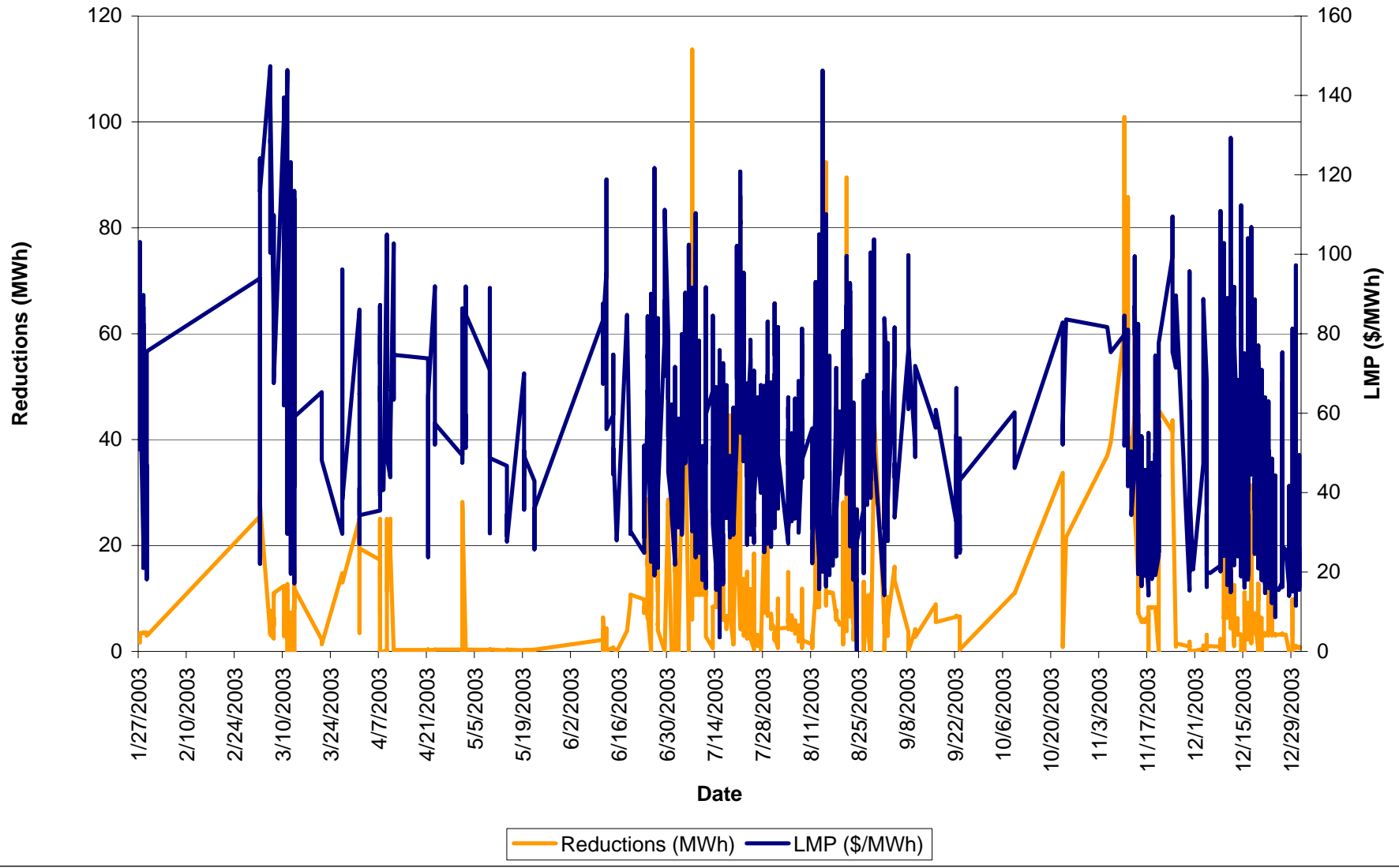


Figure 3: 2003 Economic Program Reductions vs. Load

