

Market Monitor Report

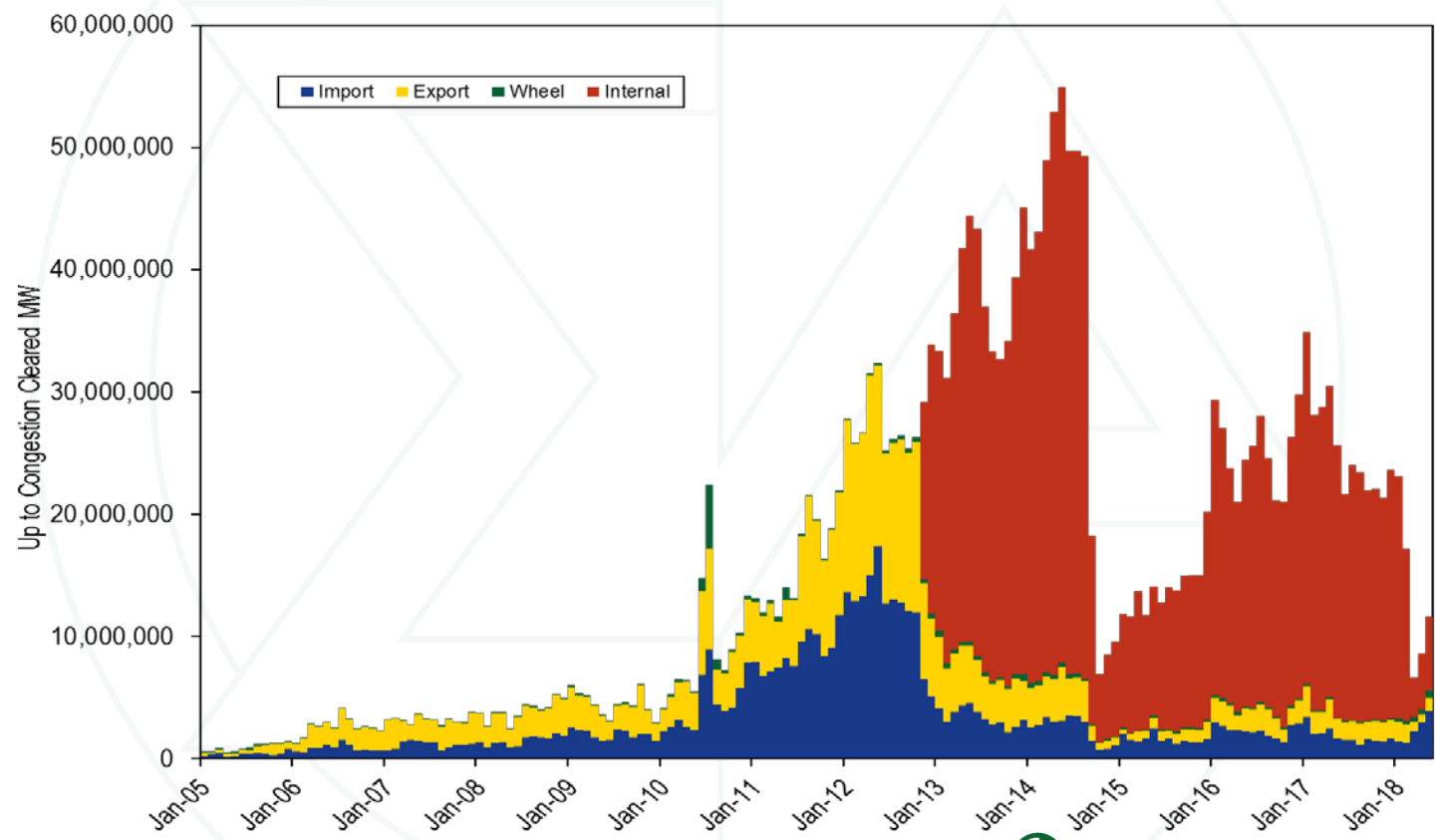
MC Webinar
June 18, 2018

Joseph Bowring

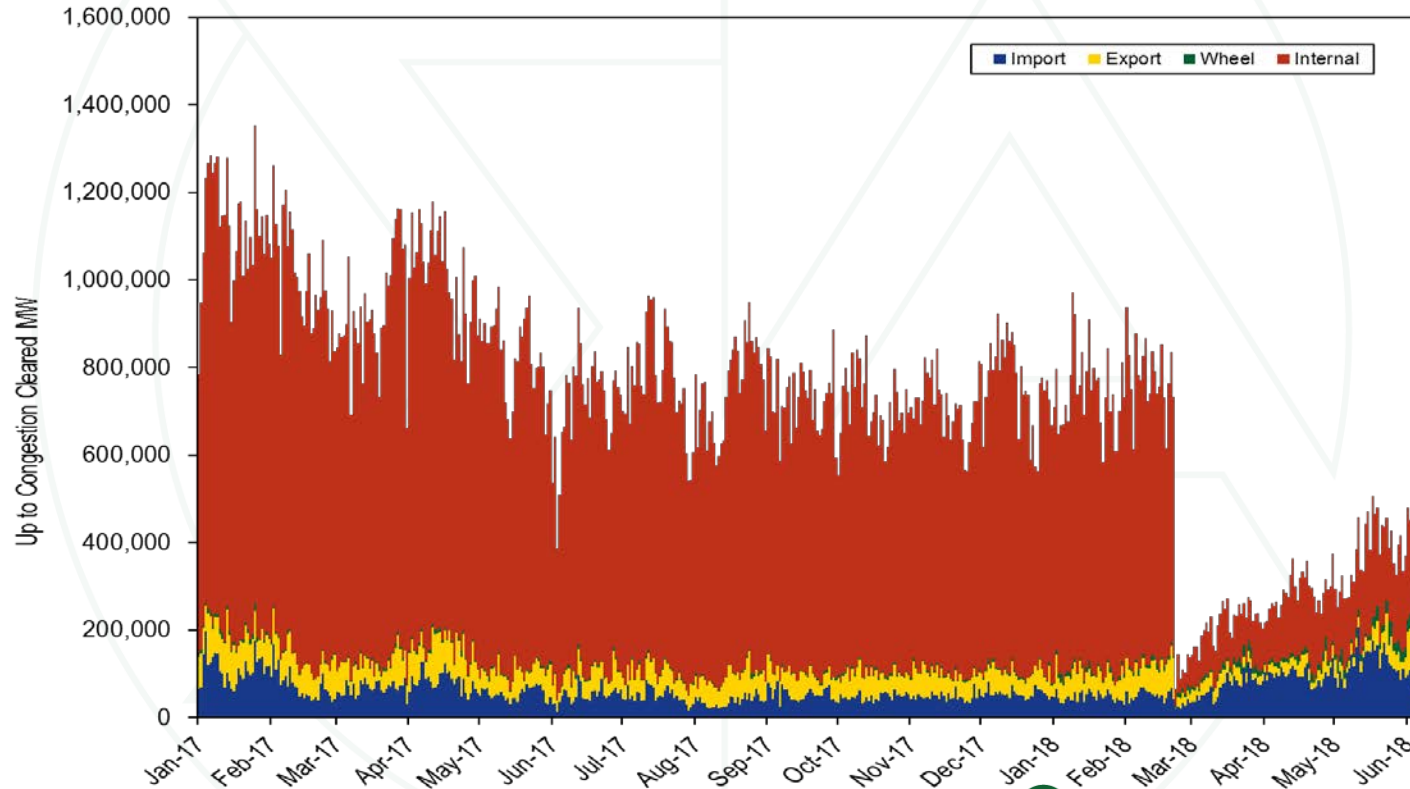


Monitoring Analytics

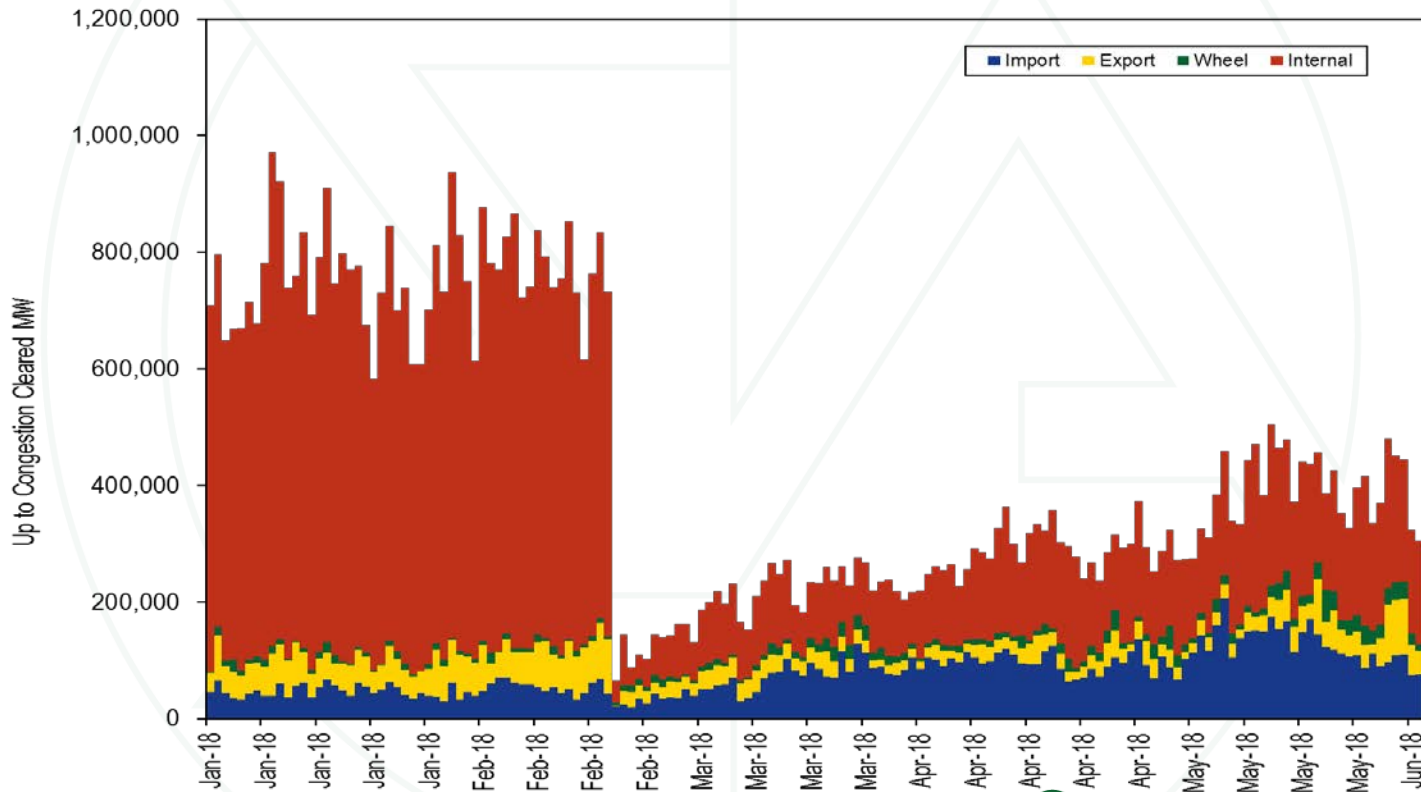
Cleared UTCs by type: 01.2005 to 05.2018



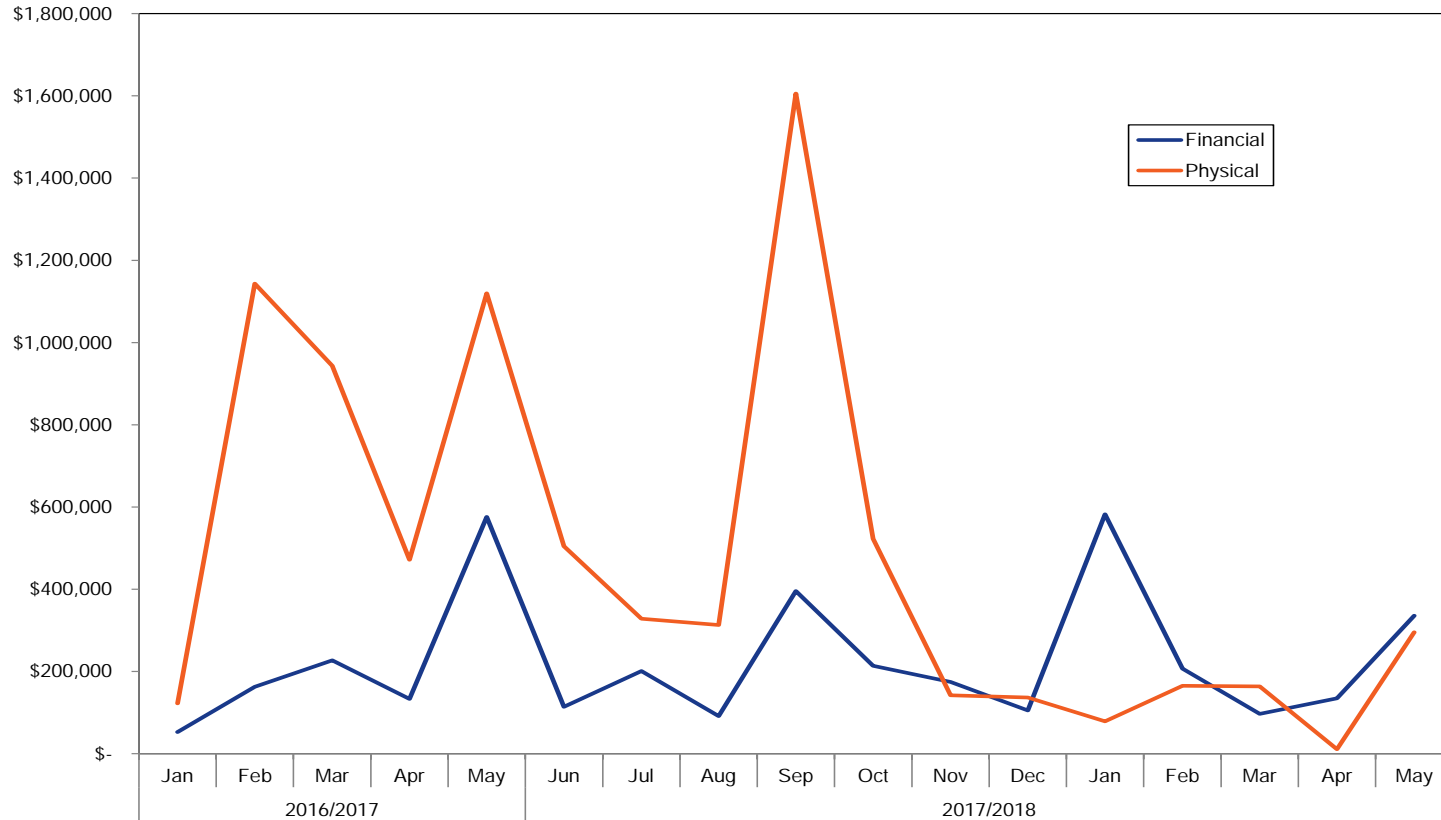
Cleared UTCs by type: 01.2017 through 06.05.2018



Cleared UTCs by type: 01 through 06.05.2018



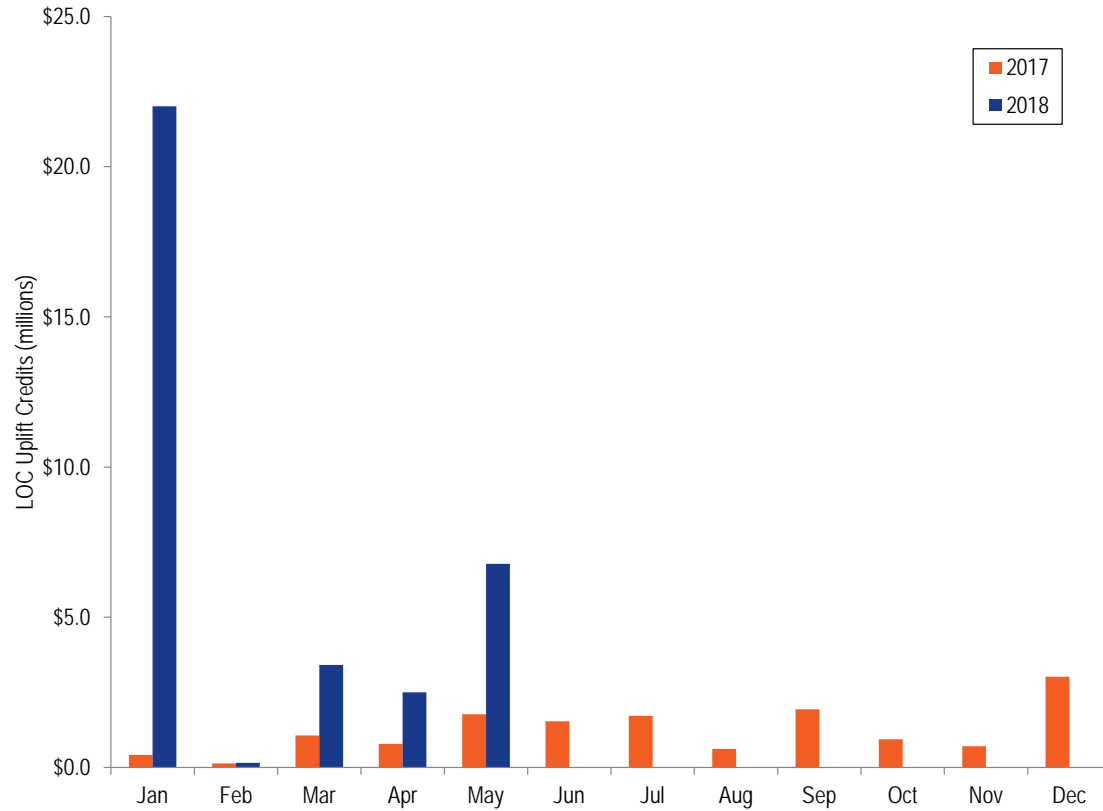
FTR Forfeitures



Congestion Offset for ARR Holders

Planning Period	Old					Current				
	ARR Credits	FTR Credits	Total Congestion	Total ARR/FTR Offset	Percent Offset	New Offset	Old Revenue Received	Current Revenue Received	ARR Holder Change	FTR Over Payment
2011/2012	\$512.2	\$249.8	\$770.6	\$762.0	98.9%	83.3%	\$762.0	\$598.6	(\$163.4)	\$113.9
2012/2013	\$349.5	\$181.9	\$575.8	\$531.4	92.3%	68.0%	\$531.4	\$275.9	(\$255.5)	\$62.1
2013/2014	\$337.7	\$456.4	\$1,777.1	\$794.0	44.7%	43.2%	\$794.0	\$574.1	(\$219.9)	\$0.0
2014/2015	\$482.4	\$404.4	\$1,390.9	\$886.8	63.8%	57.2%	\$886.8	\$686.6	(\$200.2)	\$400.6
2015/2016	\$635.3	\$223.4	\$992.6	\$858.8	86.5%	78.2%	\$858.8	\$744.8	(\$113.9)	\$188.9
2016/2017	\$640.0	\$169.1	\$824.6	\$809.1	98.1%	89.5%	\$809.1	\$727.7	(\$81.4)	\$179.0
2017/2018	\$427.3	\$294.2	\$1,297.7	\$721.5	55.6%	50.7%	\$721.5	\$596.6	(\$124.9)	\$370.7
Total	\$3,384.5	\$1,979.1	\$7,629.3	\$5,363.6	70.3%	64.0%	\$5,363.6	\$4,204.5	(\$1,159.1)	\$1,315.1

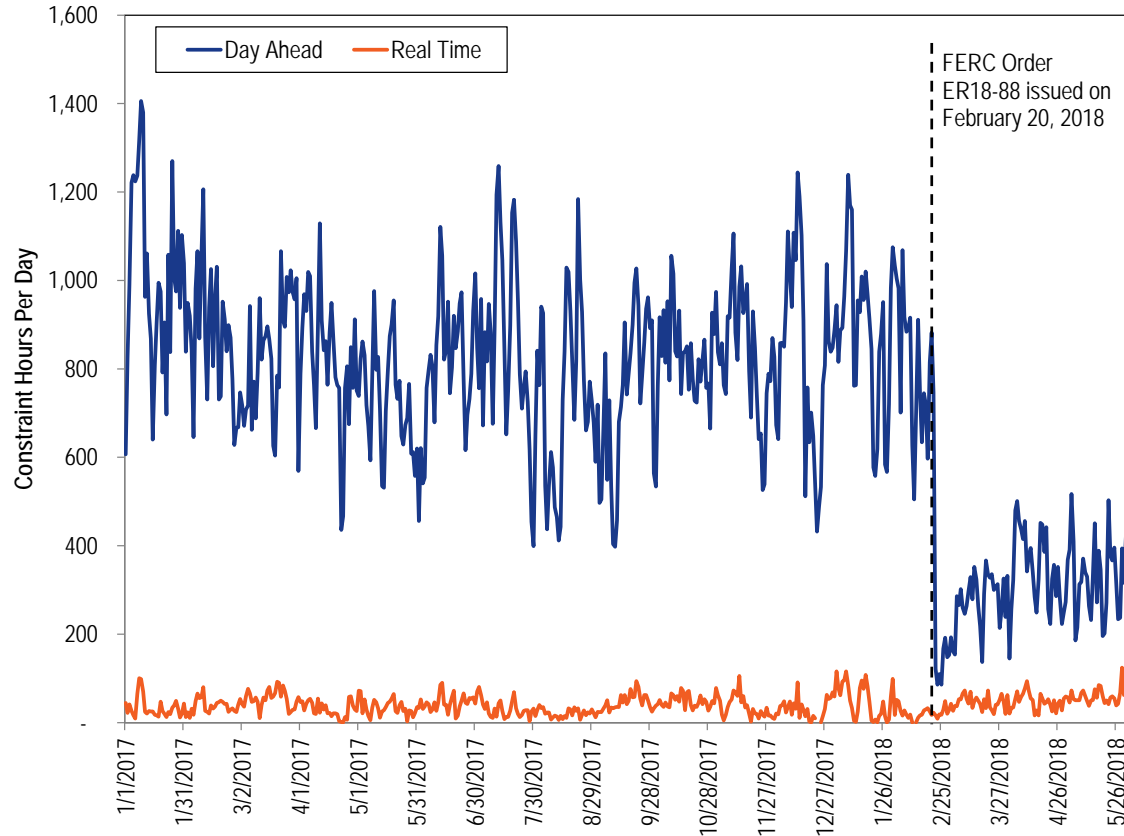
LOC Uplift Credits



Day-Ahead Generation by CTs and Diesels

	2017			2018		
	Day-Ahead Generation	Day-Ahead Generation Not Requested in Real Time	Day-Ahead Generation Not Requested in Real Time Receiving LOC Credits	Day-Ahead Generation	Day-Ahead Generation Not Requested in Real Time	Day-Ahead Generation Not Requested in Real Time Receiving LOC Credits
Jan	359	33	9	1,893	388	227
Feb	318	27	9	296	40	19
Mar	778	128	49	1,012	252	109
Apr	473	88	28	1,374	240	88
May	669	75	38	2,089	389	159
Jun	1,153	120	61			
Jul	1,815	265	123			
Aug	1,341	121	51			
Sep	2,205	123	66			
Oct	1,850	138	65			
Nov	757	106	38			
Dec	898	213	110			
Total (Jan - May)	2,596	352	133	6,664	1,307	602
Total	12,616	1,438	646	6,664	1,307	602
Share	100%	11%	5%	100%	20%	9%

Constraint Hours Per Day



VOM costs

- **All costs included in cost-based offers must be supported.**
- **If unit owners cannot document the costs in cost-based offers, such costs should not be included.**
- **Unit owners basing VOM costs on 10 or 20 years of history that do not have the supporting data, should exclude such costs.**
- **This is the case regardless of approval of VOM costs by PJM.**
- **It is the MMU's responsibility to bring such situations to the attention of FERC.**

Monitoring Analytics, LLC

2621 Van Buren Avenue

Suite 160

Eagleville, PA

19403

(610) 271-8050

MA@monitoringanalytics.com

www.MonitoringAnalytics.com

