

# Incremental Auction Review

Incremental Auction  
Senior Task Force  
March 1, 2017

Joe Bowring  
John Hyatt



Monitoring Analytics

# Summary

- **A significant amount of replacement capacity is obtained through the RPM Incremental Auctions.**
- **With very few exceptions, the auction clearing price in Incremental Auctions is below the auction clearing price in the associated BRA.**
- **The First Incremental Auction price is on average 41 percent below the associated BRA price.**

# Summary

- **The Second Incremental Auction price is on average 45 percent below the associated BRA price.**
- **The Third Incremental Auction price is on average 43 percent below the associated BRA price.**

# Sources of replacement capacity June 1, 2007 to June 1, 2016

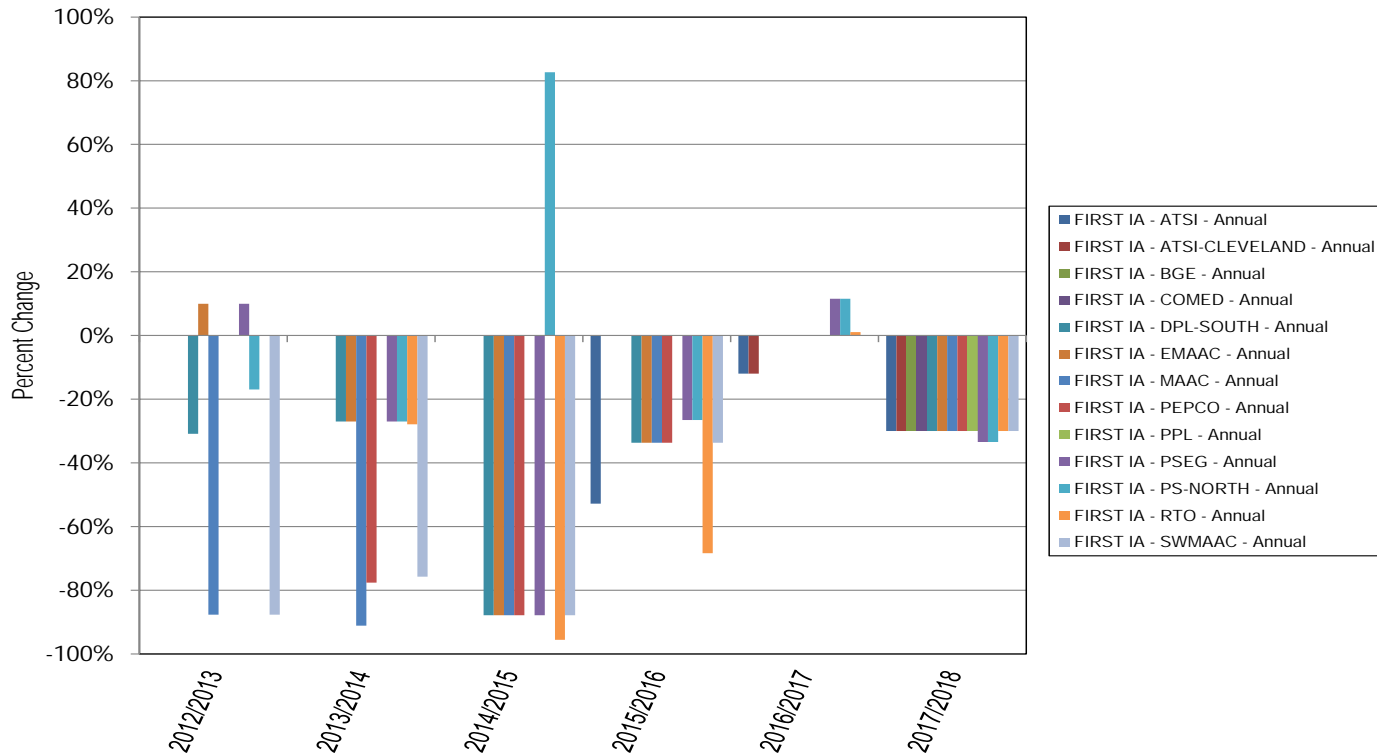
	UCAP (MW)												
	Replacement Transactions				Locational UCAP Transactions				Excess Commitment Credits	Excess ILR MW Credits	Commitment Reductions using Replacements	Commitment Additions on Replacement Resources	Net Replacements
	Cleared Buy Bids	Gen	DR	EE	Gen	DR	EE						
01-Jun-07	0.0	118.5	0.0	0.0	0.0	0.0	0.0	0.0	0.0	118.5	118.5	0.0	
01-Jun-08	766.5	1,819.4	15.0	0.0	0.0	0.0	0.0	0.0	0.0	2,600.9	1,834.4	766.5	
01-Jun-09	1,708.6	3,253.1	31.1	0.0	35.8	0.0	0.0	0.0	359.7	5,388.3	3,320.1	2,068.2	
01-Jun-10	1,816.4	2,595.5	19.4	0.0	335.7	0.0	0.0	959.9	1,403.5	7,130.4	2,951.4	4,179.0	
01-Jun-11	1,805.2	3,467.1	98.3	1.0	538.1	12.7	0.0	2,735.2	2,177.2	10,834.8	4,117.2	6,717.6	
01-Jun-12	9,185.9	4,650.0	1,597.5	133.0	1,937.6	13.2	0.0	213.4	0.0	17,730.6	8,330.0	9,400.6	
01-Jun-13	12,021.2	3,214.3	4,403.9	708.2	798.6	26.3	48.9	214.2	0.0	21,435.6	9,200.3	12,235.3	
01-Jun-14	13,619.7	2,935.2	2,527.2	791.5	1,878.2	45.8	112.3	0.0	0.0	21,909.9	8,294.0	13,615.9	
01-Jun-15	11,850.0	2,736.2	2,237.6	651.3	750.5	201.5	153.9	0.0	0.0	18,581.0	6,731.6	11,849.4	
01-Jun-16	16,139.9	4,301.4	2,116.8	1,318.6	2,245.9	297.5	51.6	100.0	0.0	26,571.7	10,418.2	16,153.5	

# Sources of replacement capacity to total replacements for all Capacity Resources: June 1, 2007 to June 1, 2016

	Replacement Transactions				Locational UCAP Transactions			Excess Commitment Credits	Excess ILR MW Credits	Total Replacements	Major Source of Replacements
	Cleared Buy Bids	Gen	DR	EE	Gen	DR	EE				
01-Jun-07	0.0%	100.0%	0.0%	0.0%	0.0%	0.0%	0.0%	0.0%	0.0%	100.0%	Replacement Transactions - Gen
01-Jun-08	29.5%	70.0%	0.6%	0.0%	0.0%	0.0%	0.0%	0.0%	0.0%	100.0%	Replacement Transactions - Gen
01-Jun-09	31.7%	60.4%	0.6%	0.0%	0.7%	0.0%	0.0%	0.0%	6.7%	100.0%	Replacement Transactions - Gen
01-Jun-10	25.5%	36.4%	0.3%	0.0%	4.7%	0.0%	0.0%	13.5%	19.7%	100.0%	Replacement Transactions - Gen
01-Jun-11	16.7%	32.0%	0.9%	0.0%	5.0%	0.1%	0.0%	25.2%	20.1%	100.0%	Replacement Transactions - Gen
01-Jun-12	51.8%	26.2%	9.0%	0.8%	10.9%	0.1%	0.0%	1.2%	0.0%	100.0%	Cleared Buy Bids
01-Jun-13	56.1%	15.0%	20.5%	3.3%	3.7%	0.1%	0.2%	1.0%	0.0%	100.0%	Cleared Buy Bids
01-Jun-14	62.2%	13.4%	11.5%	3.6%	8.6%	0.2%	0.5%	0.0%	0.0%	100.0%	Cleared Buy Bids
01-Jun-15	63.8%	14.7%	12.0%	3.5%	4.0%	1.1%	0.8%	0.0%	0.0%	100.0%	Cleared Buy Bids
01-Jun-16	60.7%	16.2%	8.0%	5.0%	8.5%	1.1%	0.2%	0.4%	0.0%	100.0%	Cleared Buy Bids

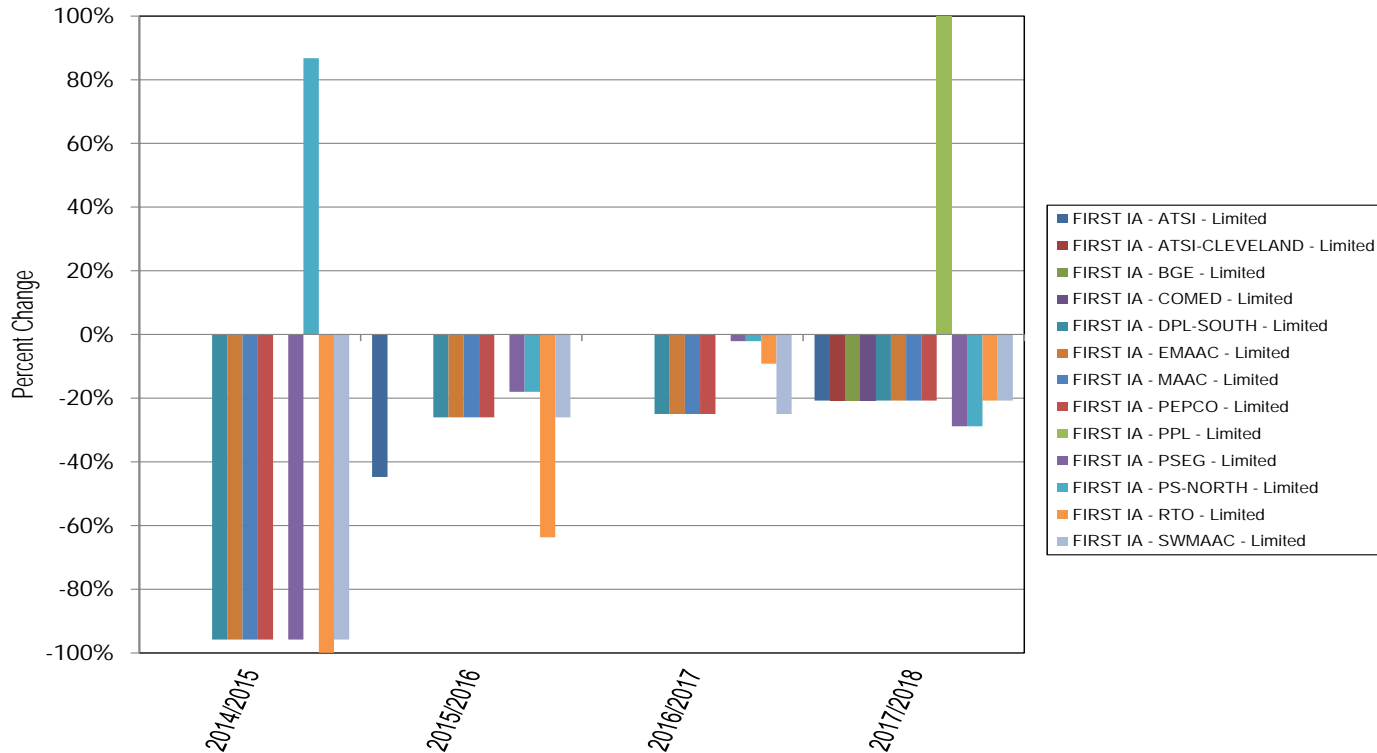
# First IA compared to BRA

## Percent Price Change (Annual)



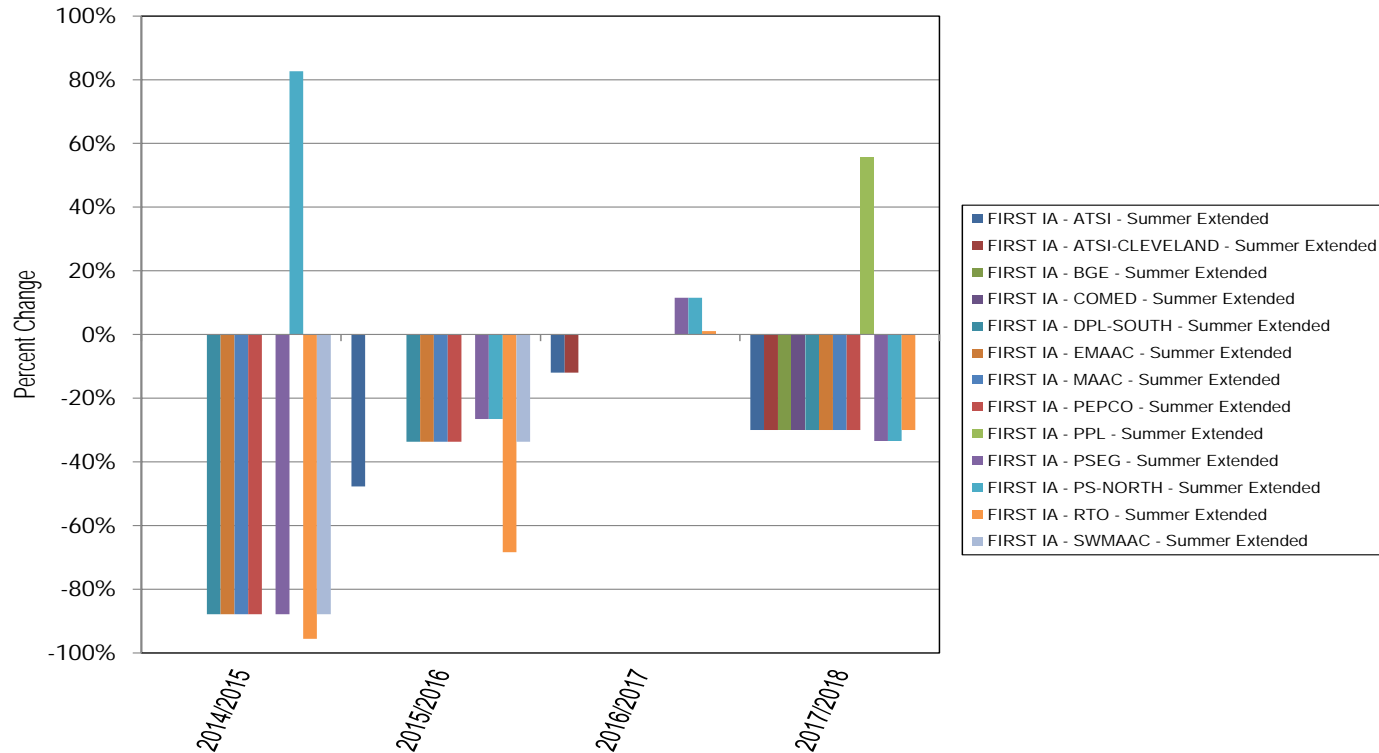
# First IA compared to BRA

## Percent Price Change (Limited)



# First IA compared to BRA

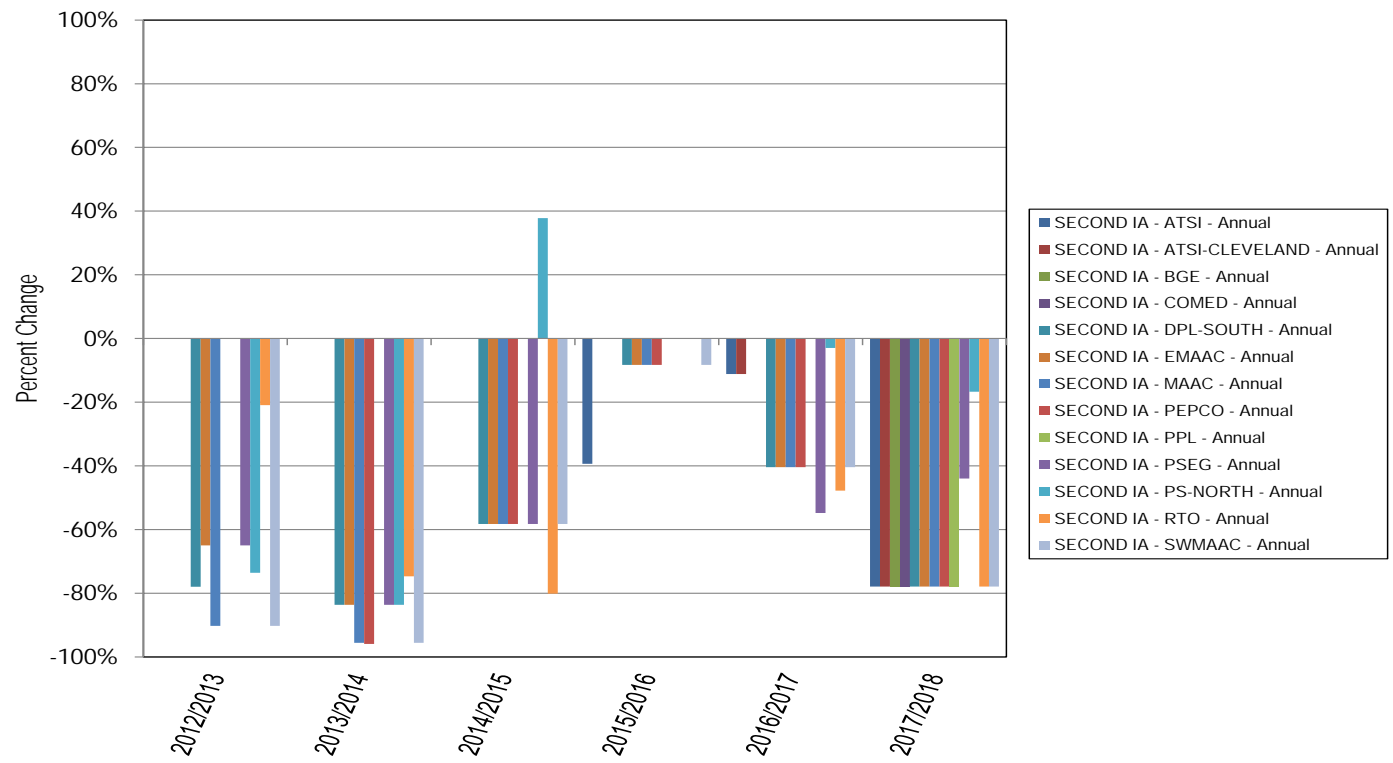
## Percent Price Change (Summer Extended)





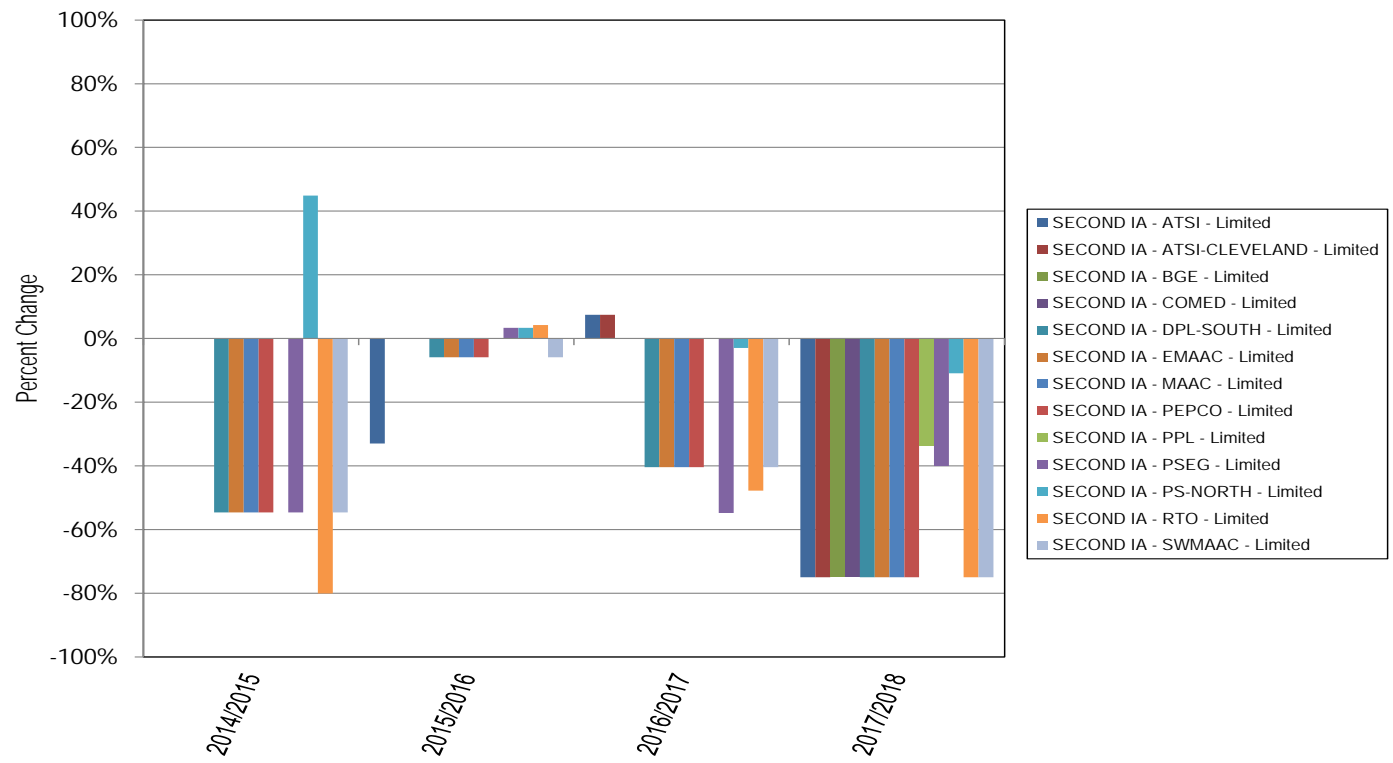
# Second IA compared to BRA Price Change (Annual)

Percent



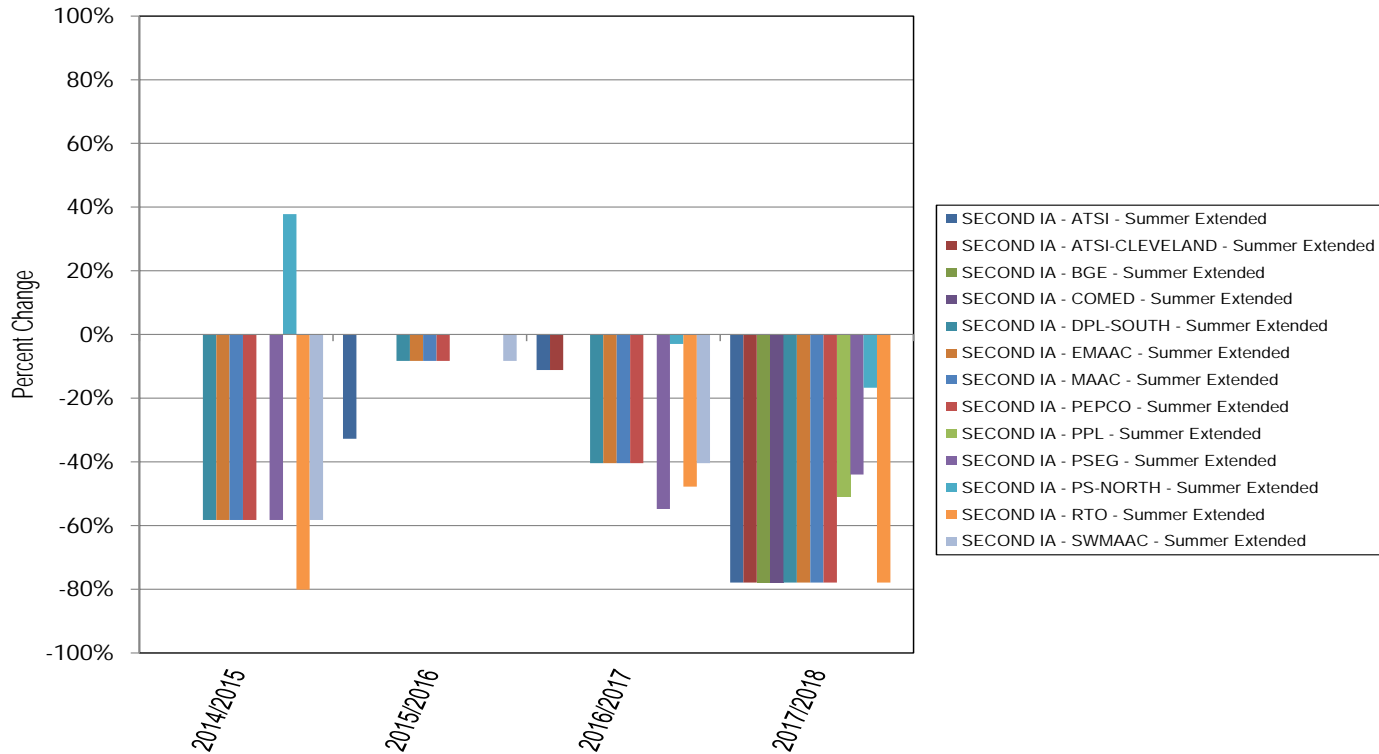
# Second IA compared to BRA Price Change (Limited)

Percent



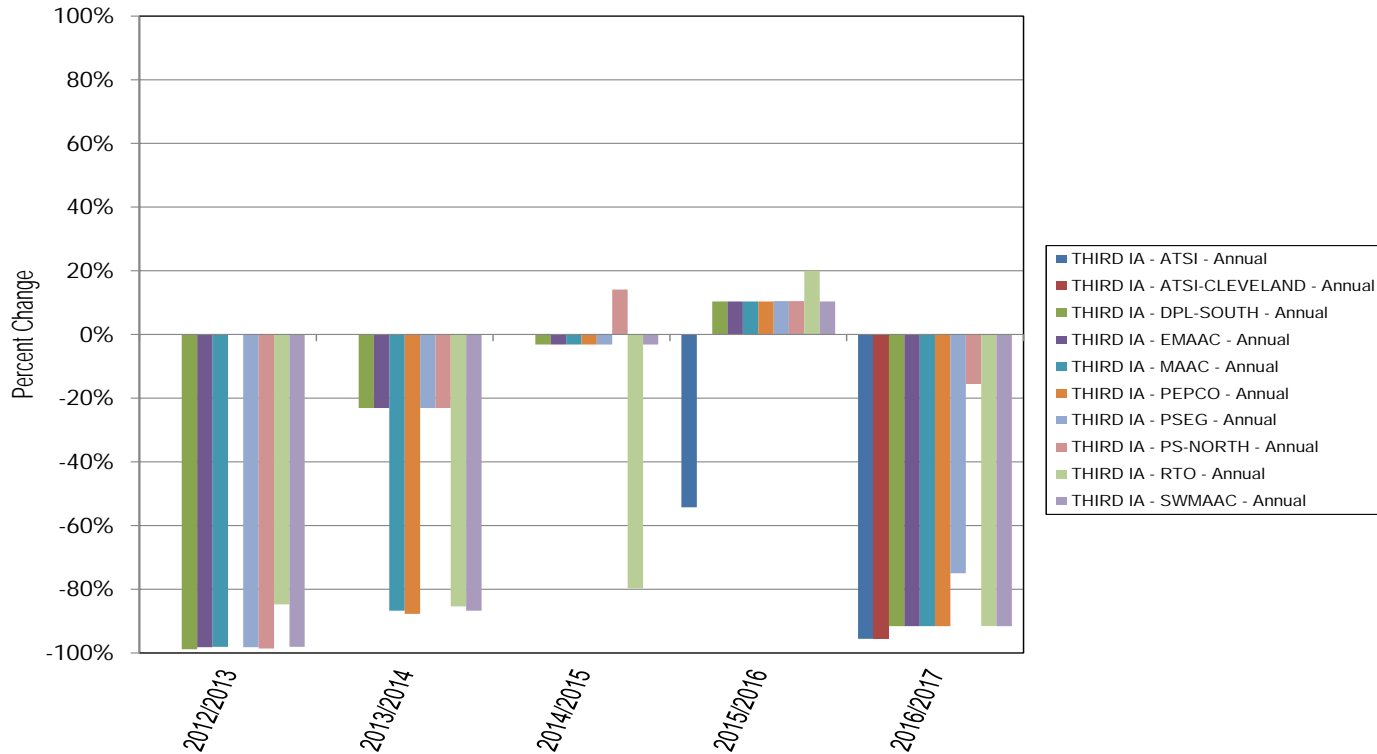
# Second IA compared to BRA

## Percent Price Change (Summer Extended)

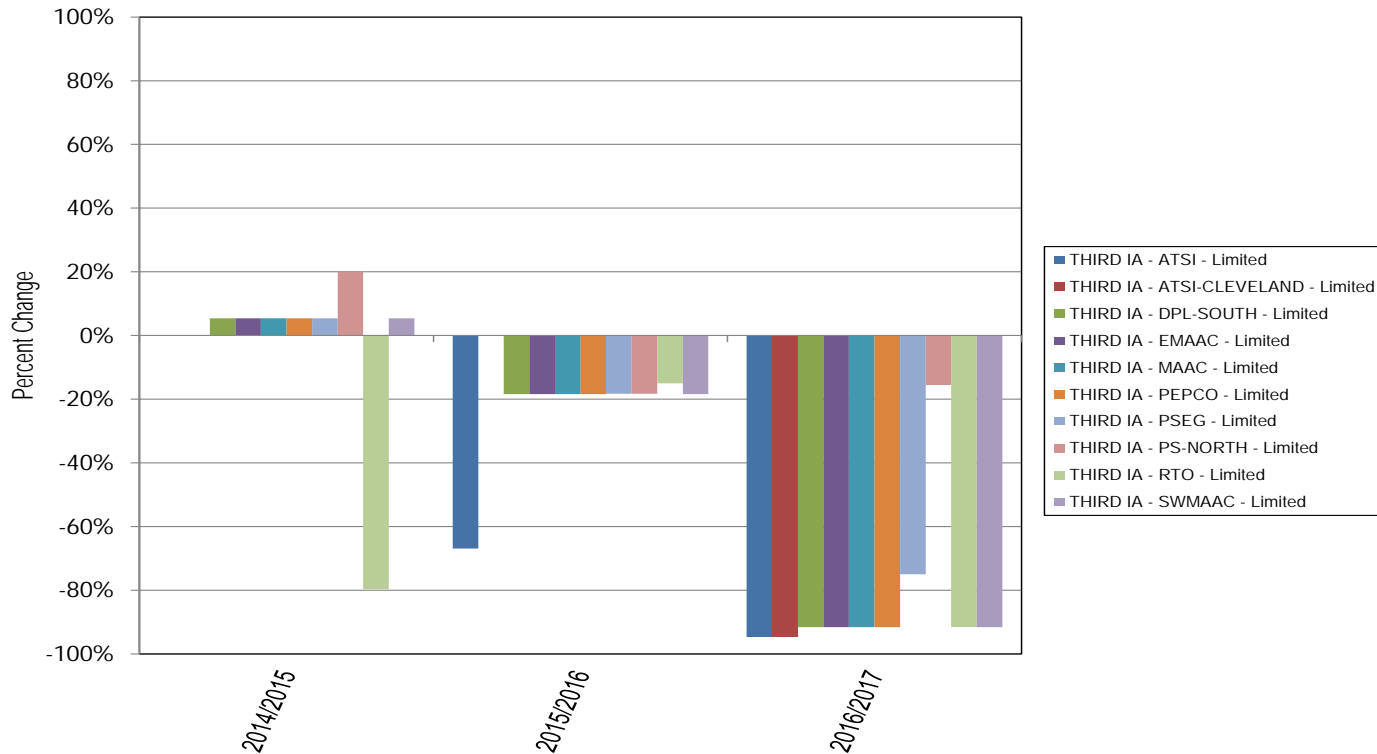


# Third IA compared to BRA

## Percent Price Change (Annual)

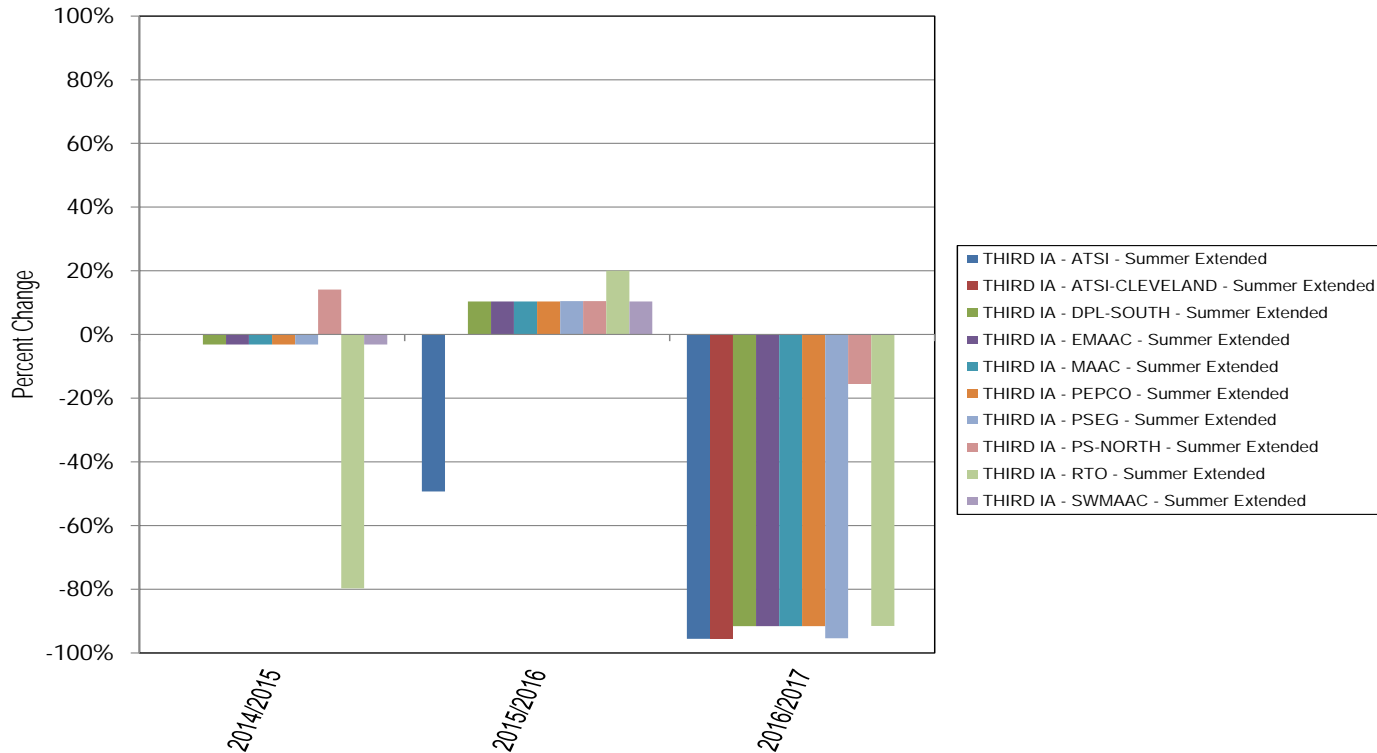


# Third IA compared to BRA Percent Price Change (Limited)

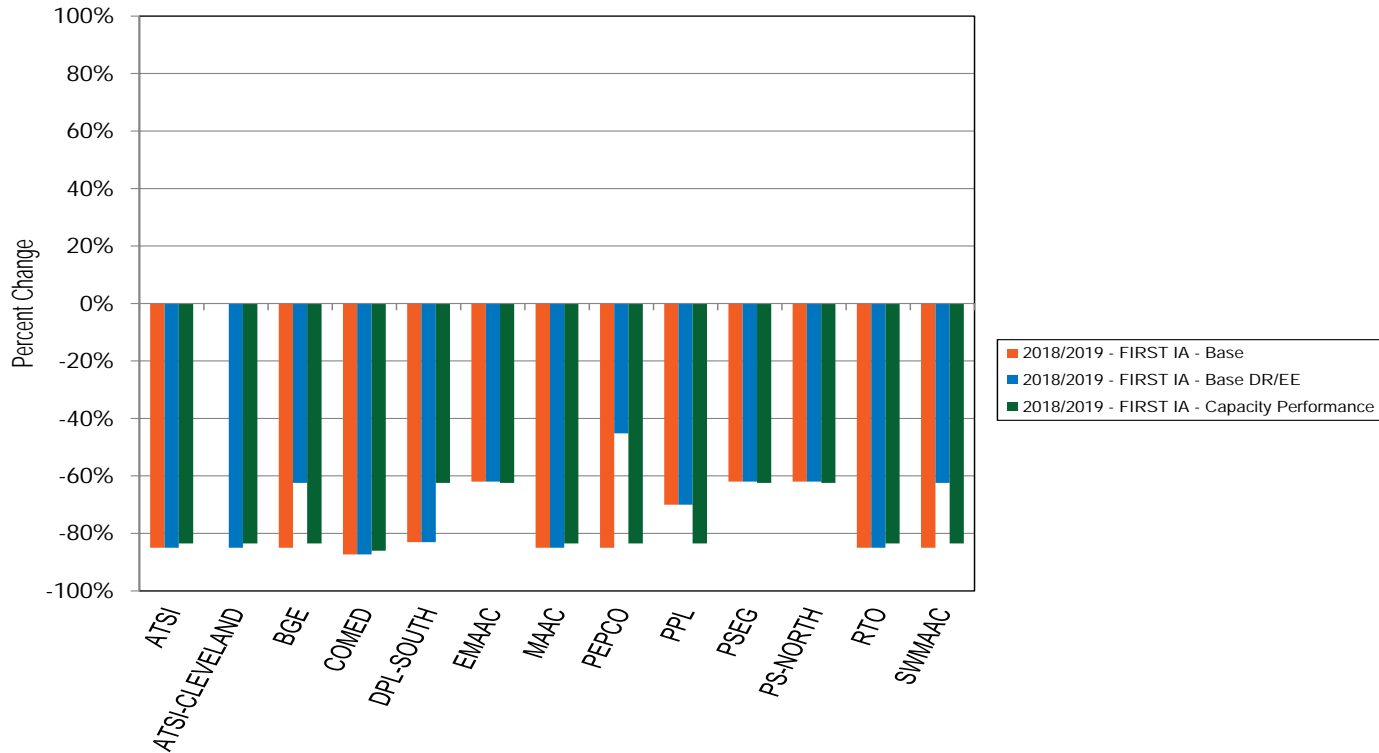


# Third IA compared to BRA

## Percent Price Change (Summer Extended)



# 2018/2019 First IA compared to BRA Percent Price Change



# PJM Sell Offer History

Delivery Year	Auction	Product Type	PJM Sell Offer		Cleared in Auction	
			MW	Weighted Average Price	MW	Weighted Average Price
2012/2013	FIRST	Annual	698.1	\$90.77	469.9	\$98.98
2012/2013	SECOND	Annual	3,522.3	\$26.05	2,376.8	\$17.59
2012/2013	THIRD	Annual	2,729.8	\$22.08	1,990.9	\$2.51
2013/2014	FIRST	Annual	3,263.8	\$58.57	2,494.9	\$58.09
2013/2014	SECOND	Annual	4,987.0	\$33.10	3,602.1	\$14.63
2013/2014	THIRD	Annual	1,099.2	\$161.49	605.6	\$186.92
2014/2015	FIRST	Limited	3,147.8	\$13.64	2,702.4	\$2.43
2014/2015	SECOND	Annual	2,039.8	\$19.18	1,635.3	\$46.43
2014/2015	THIRD	Annual	210.6	\$52.53	203.7	\$132.20
2015/2016	FIRST	Annual	2,126.2	\$42.87	1,876.0	\$75.45
2015/2016	FIRST	Summer Extended	28.9	\$280.42	0.0	NA
2015/2016	SECOND	Annual	1,098.2	\$108.82	962.3	\$162.73
2016/2017	FIRST	Annual	820.7	\$7.88	820.7	\$92.72
2016/2017	FIRST	Limited	1,022.6	\$58.08	803.1	\$106.00
2016/2017	SECOND	Annual	4,561.7	\$9.39	4,307.7	\$46.79
2016/2017	THIRD	Annual	5,223.4	\$9.44	4,818.0	\$6.74
2017/2018	FIRST	Annual	4,035.0	\$13.53	3,709.9	\$84.42
2017/2018	SECOND	Summer Extended	122.4	\$37.11	69.5	\$26.50
2017/2018	SECOND	Annual	3,144.7	\$11.71	2,926.8	\$34.77
2018/2019	FIRST	Base	3,666.5	\$104.52	153.8	\$41.56



# PJM Buy Bid History

Delivery Year	Auction	Product Type	PJM Buy Bid		Cleared in Auction	
			MW	Weighted Average Price	MW	Weighted Average Price
2012/2013	FIRST	Annual	409.6	\$176.86	409.6	\$16.46
2012/2013	THIRD	Annual	11.6	\$226.89	11.6	\$2.51
2013/2014	THIRD	Annual	140.6	\$243.73	140.6	\$127.59
2014/2015	FIRST	Summer Extended	97.0	\$410.95	92.4	\$410.95
2014/2015	SECOND	Limited	143.0	\$226.61	68.4	\$56.94
2014/2015	THIRD	Limited	1,755.6	\$164.58	1,499.2	\$46.46
2015/2016	FIRST	Limited	60.1	\$219.99	60.1	\$111.00
2015/2016	SECOND	Limited	736.2	\$90.18	49.1	\$141.12
2015/2016	THIRD	Limited	2.0	\$135.37	2.0	\$122.56
2016/2017	FIRST	Limited	206.4	\$190.19	204.8	\$110.56
2016/2017	SECOND	Limited	14.0	\$220.85	14.0	\$212.53
2016/2017	THIRD	Limited	135.1	\$160.60	135.1	\$70.37
2017/2018	FIRST	Limited	130.6	\$167.33	130.6	\$99.70

**Monitoring Analytics, LLC**

**2621 Van Buren Avenue**

**Suite 160**

**Eagleville, PA**

**19403**

**(610) 271-8050**

**MA@monitoringanalytics.com**

**www.MonitoringAnalytics.com**

