

Market Monitor Report

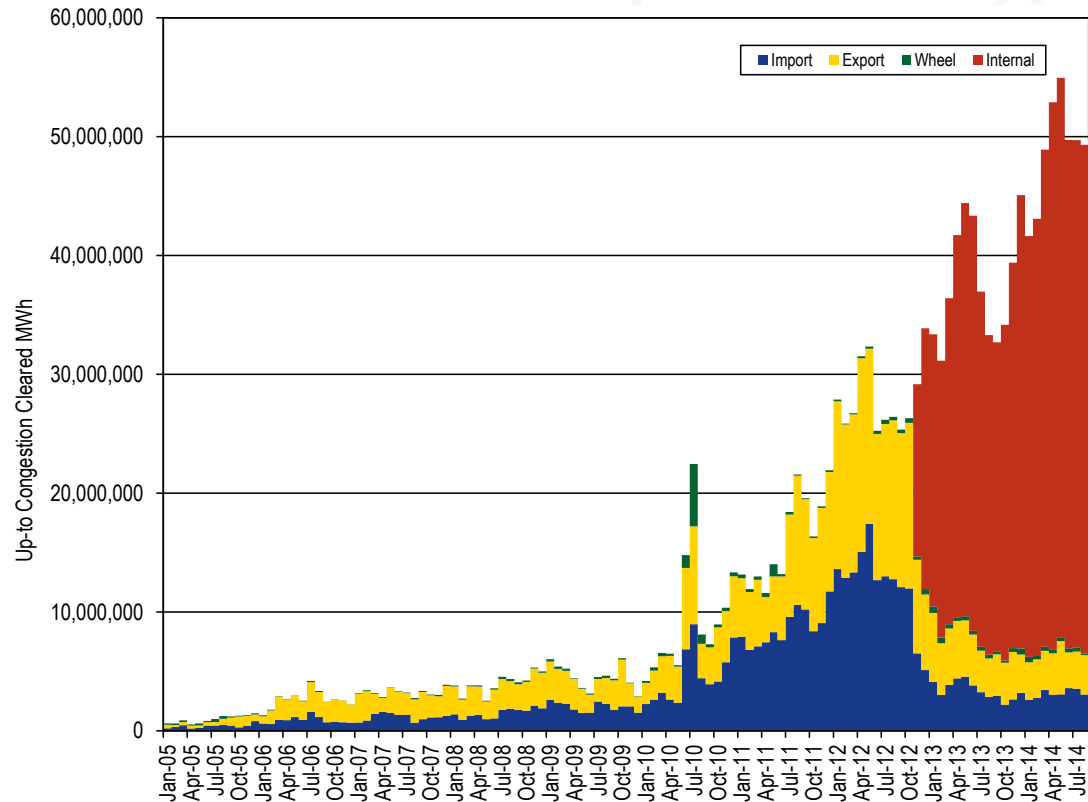
MC Webinar
September 15, 2014

Joseph Bowring

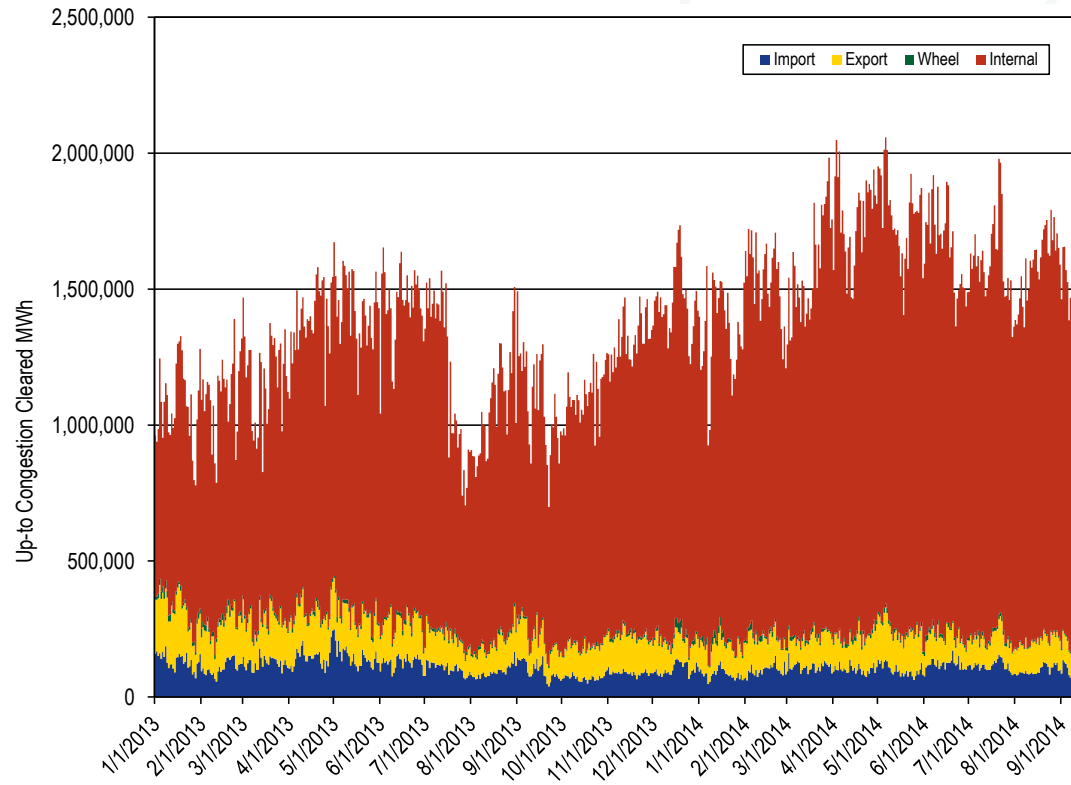


Monitoring Analytics

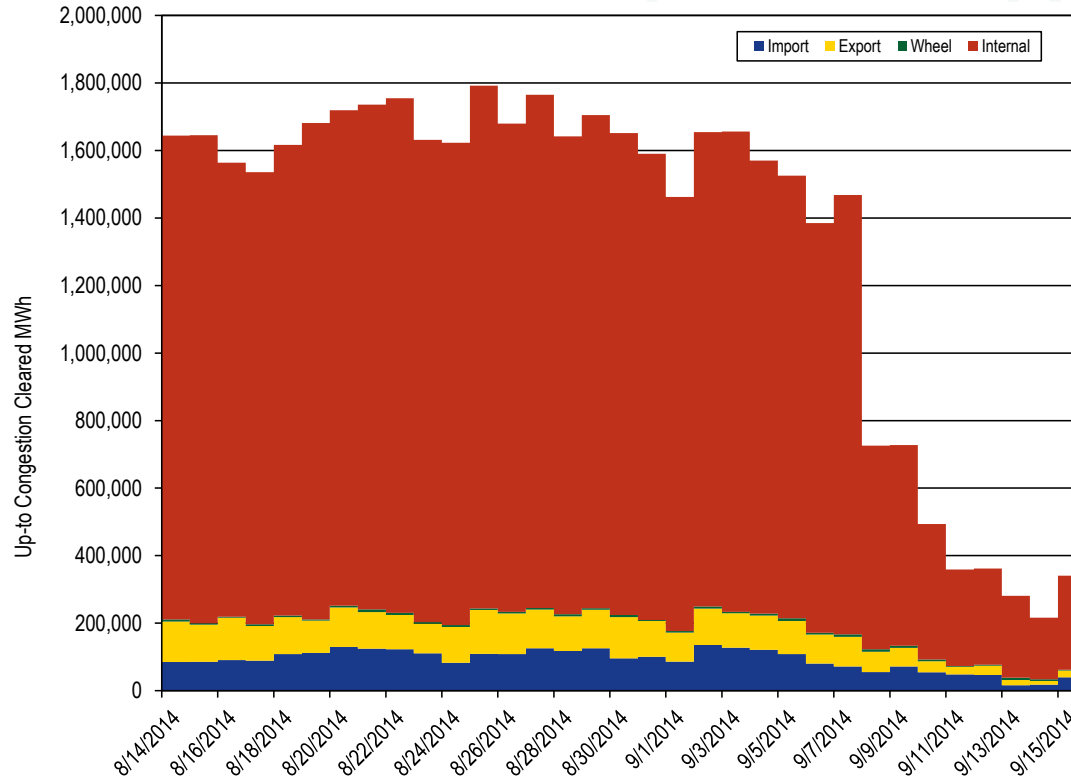
Monthly cleared UTCs (MW) by type: January 2005 through August 2014



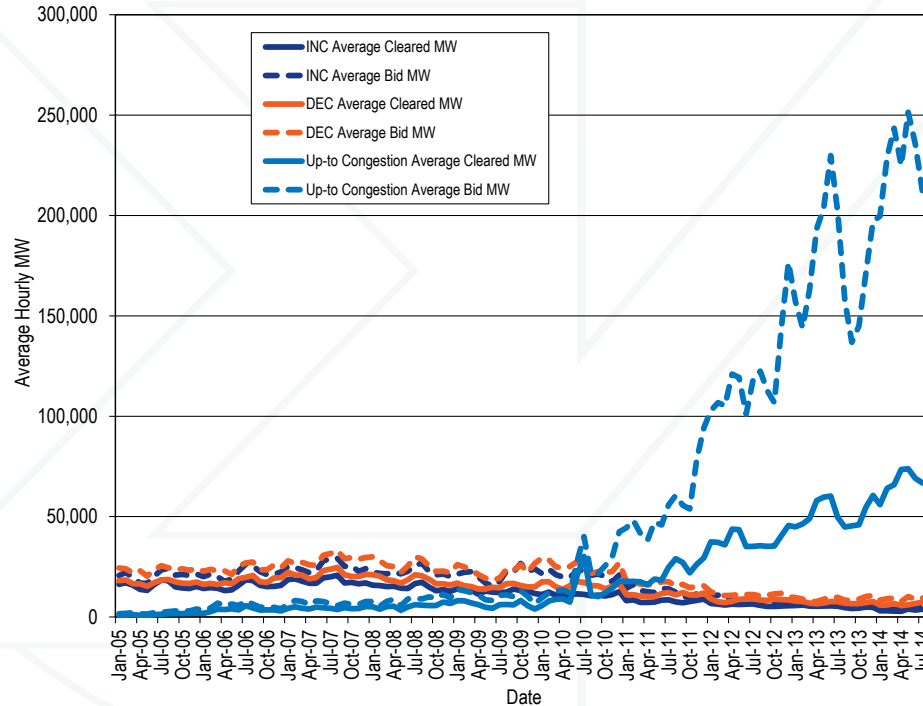
Daily cleared UTCs (MW) by type: January 2013 through September 15, 2014



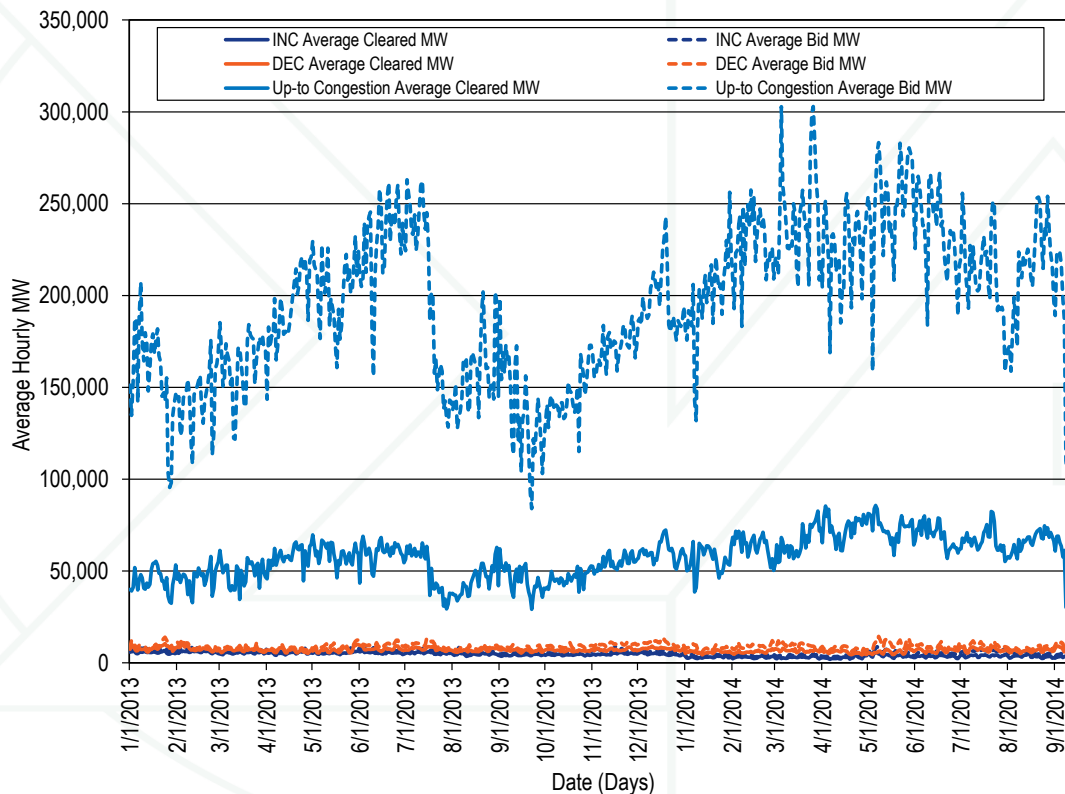
Daily cleared UTCs (MW) by type: August 14, 2014, through September 15, 2014



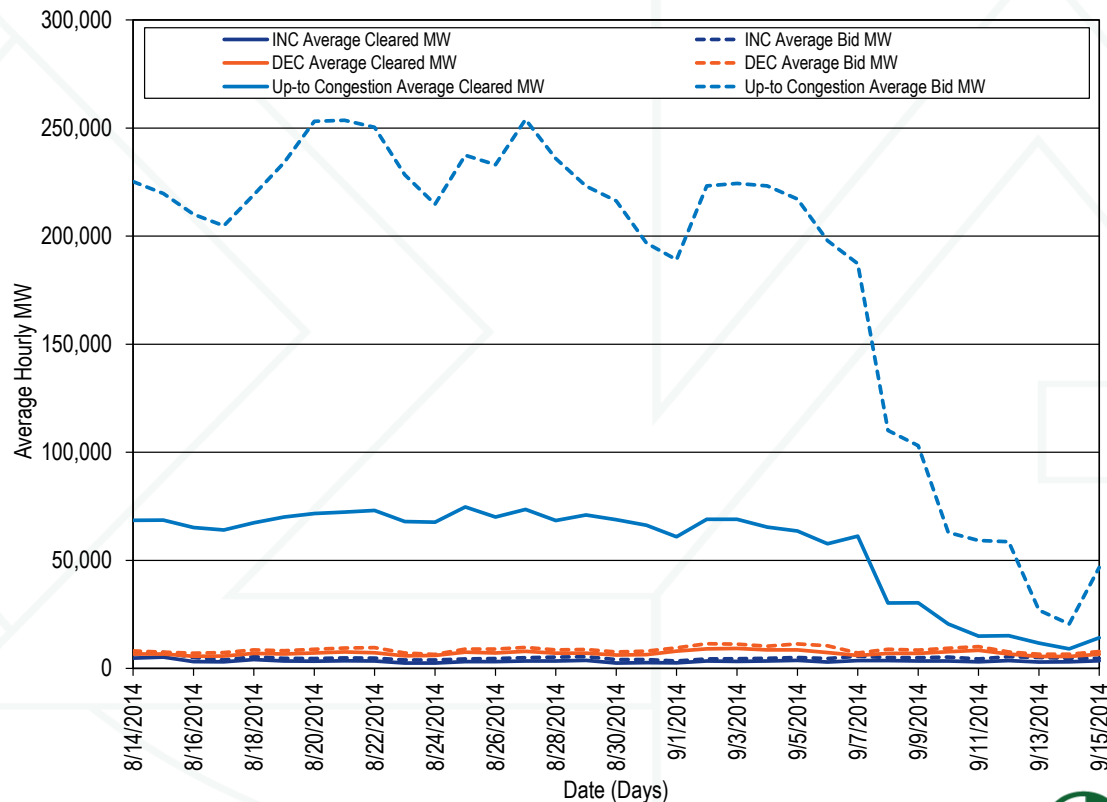
Monthly bid and cleared INCs, DEC's and UTCs (MW): January 2005 through August 2014



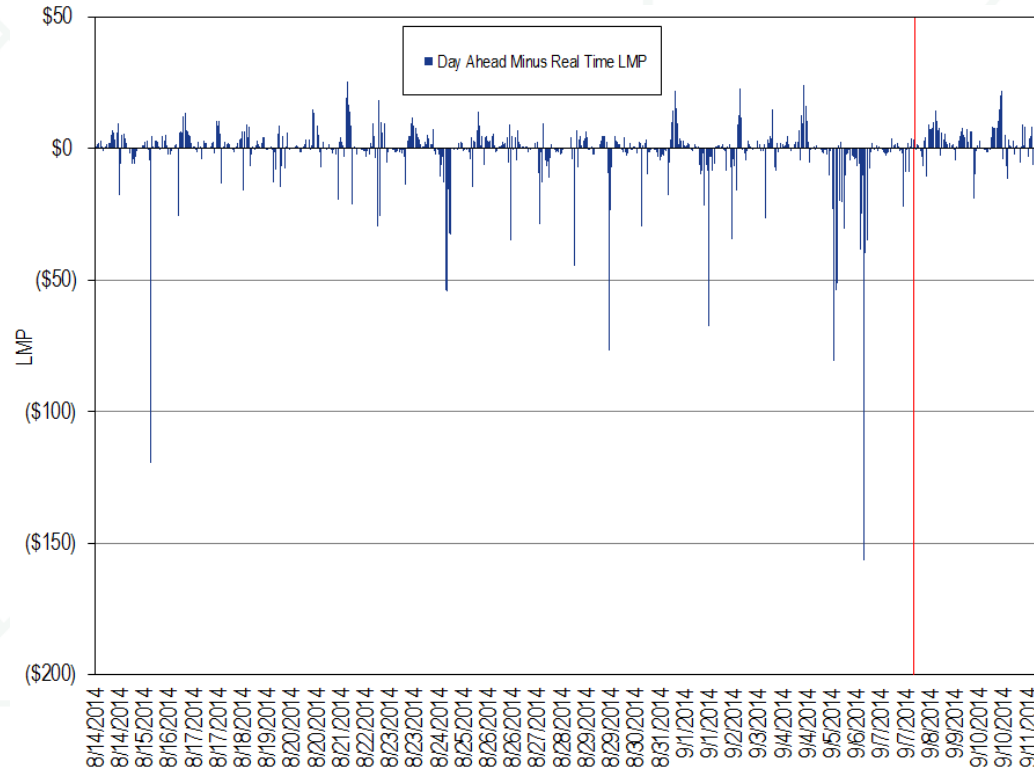
Daily bid and cleared INCs, DECs and UTCs (MW): January 2013 through September 15, 2014



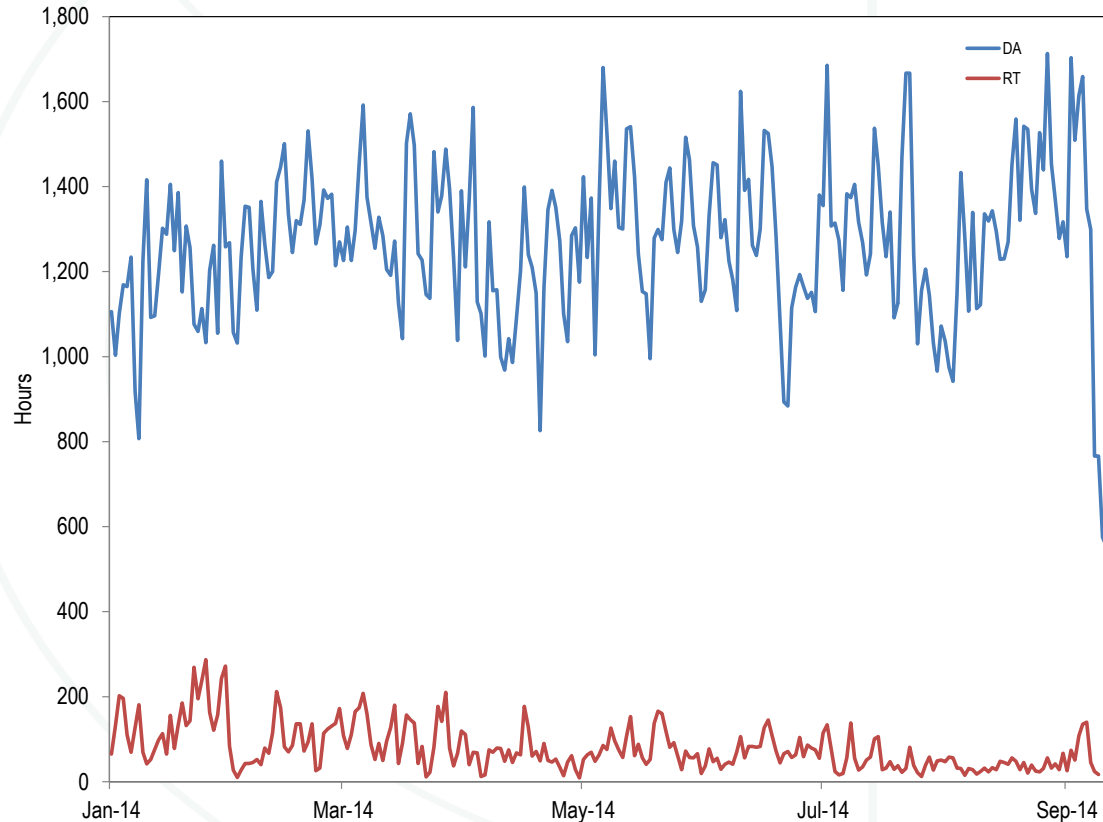
Daily bid and cleared INCs, DEC and UTCs (MW): August 14, 2014 through September 15, 2014



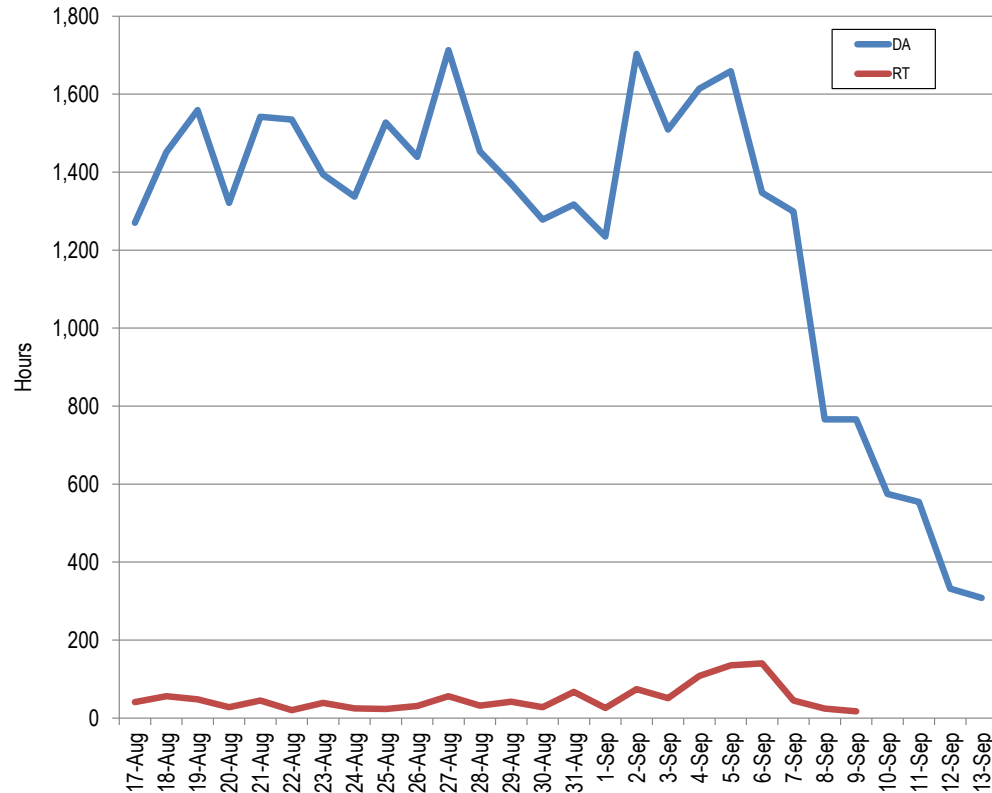
Day-Ahead minus Real-time LMP for a top UTC location: August 14, 2014, through September 11, 2014



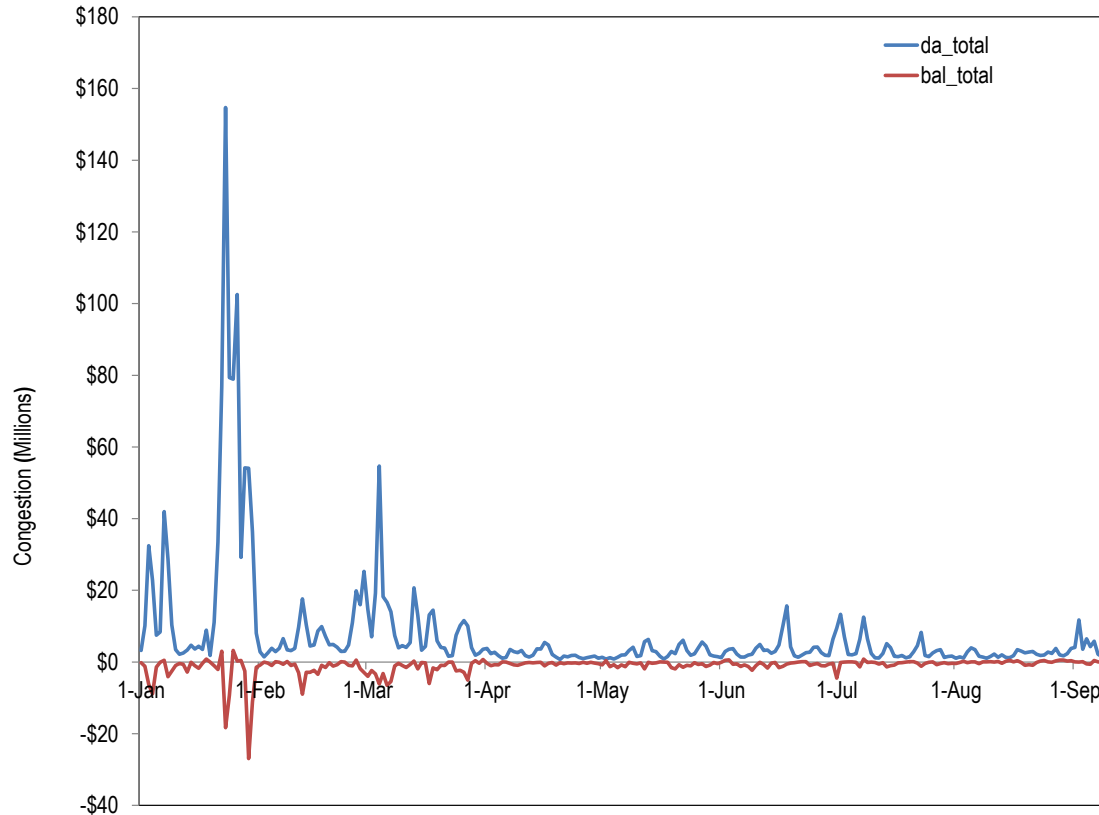
DA and RT Binding Constraint Hours: January 2014 through September 13, 2014



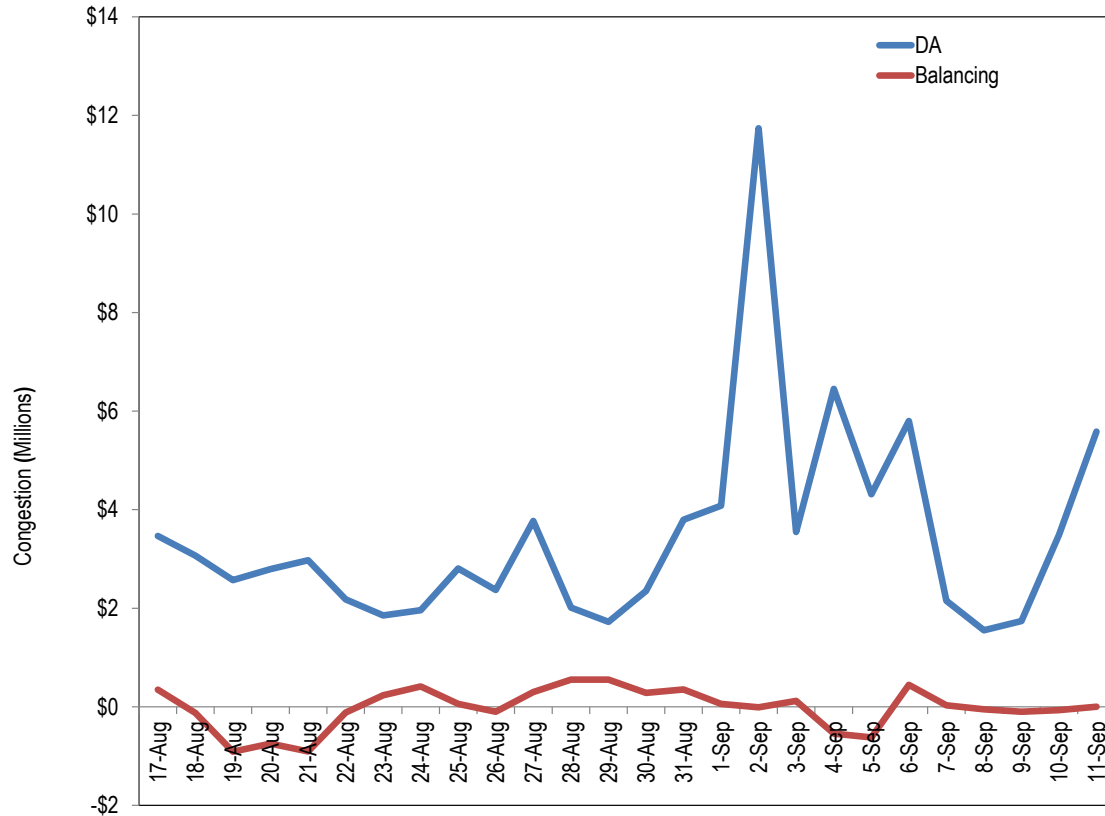
DA and RT Binding Constraint Hours: August 17, 2014 through September 13, 2014



DA and balancing congestion: January 2014 through September 11, 2014



DA and balancing congestion: August 17, 2014 through September 11, 2014



FTR funding geography and balancing congestion

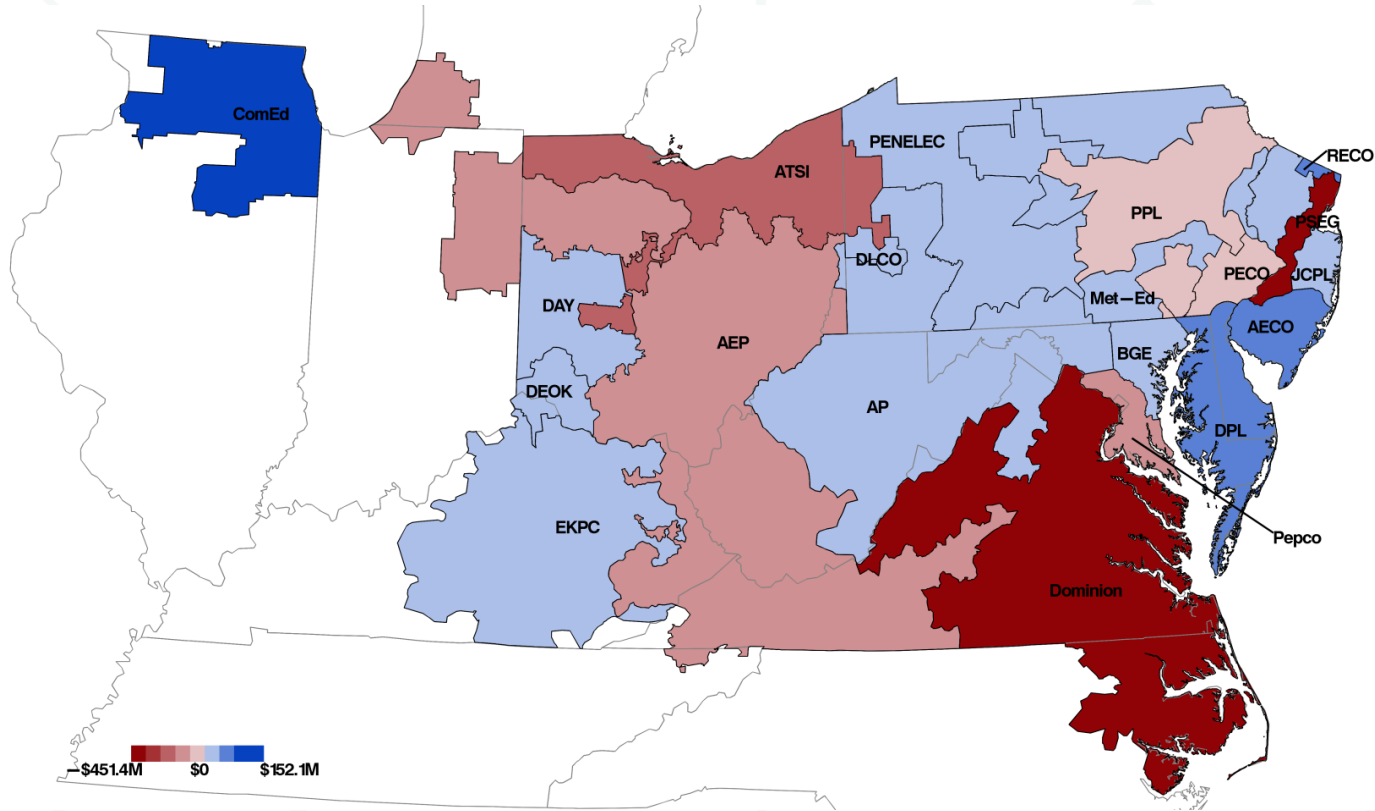
- **FTRs are cross subsidized on a geographical basis:**
 - **Congestion revenues in zones with congestion revenues greater than target allocations fund FTRs in zones with congestion revenue less than target allocations.**
 - **No incentive to purchase FTRs in fully funded zones.**
 - **No disincentive to purchase FTRs in less than fully funded zones.**



FTR geographic cross subsidies

- **Zonal FTR funding relative to target allocation represented by fill color.**
 - **Red represents congestion revenues less than target allocations.**
 - **Blue represents congestion revenues greater than target allocations.**
- **Magnitude of funding difference represented by shading**

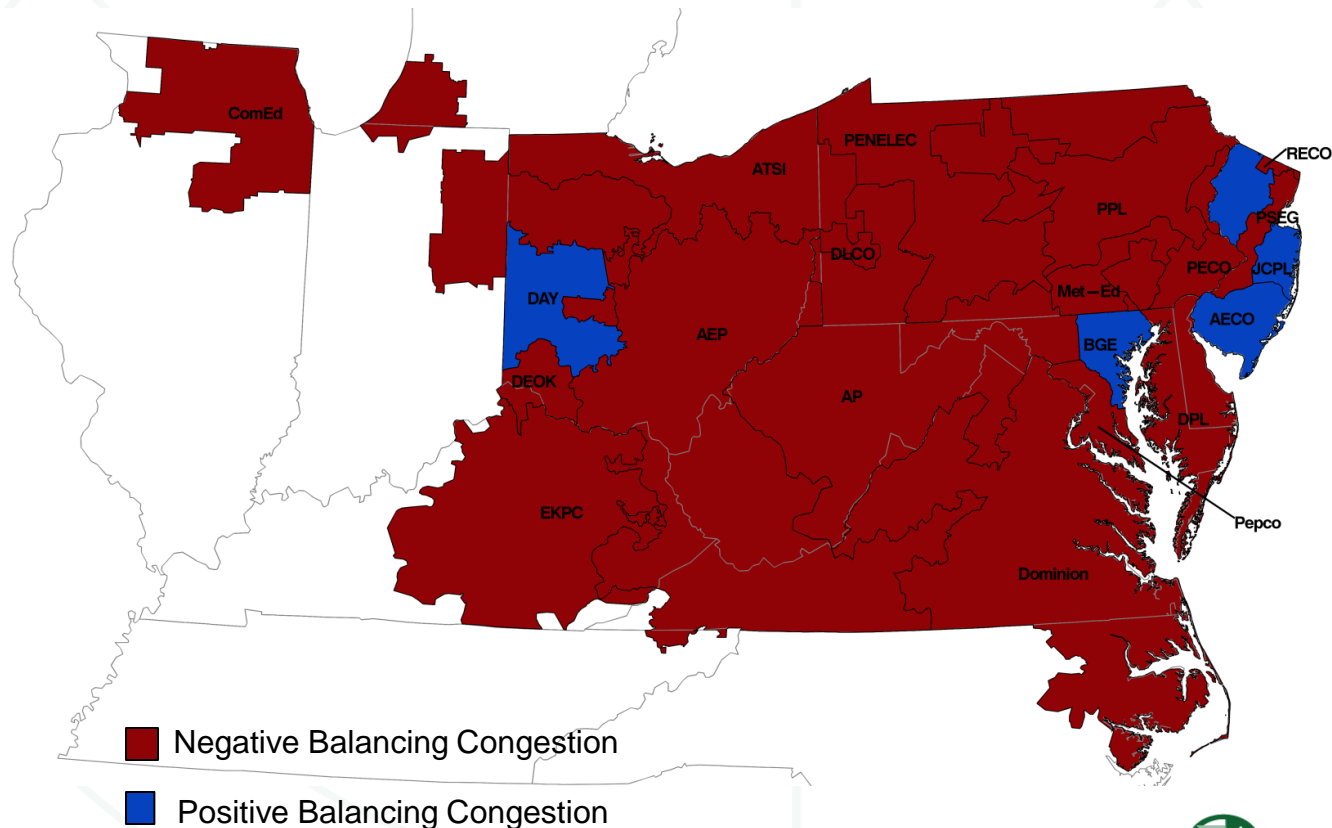
FTR funding relative to target allocations by zone: planning period 2013 to 2014



Zonal balancing congestion

- **Balancing congestion by zone**
 - Red represents net negative balancing congestion
 - Blue represents net positive balancing congestion
- **Magnitude of balancing congestion not represented on this map**

Zonal balancing congestion: planning period 2013 to 2014



Zonal FTR funding and balancing congestion

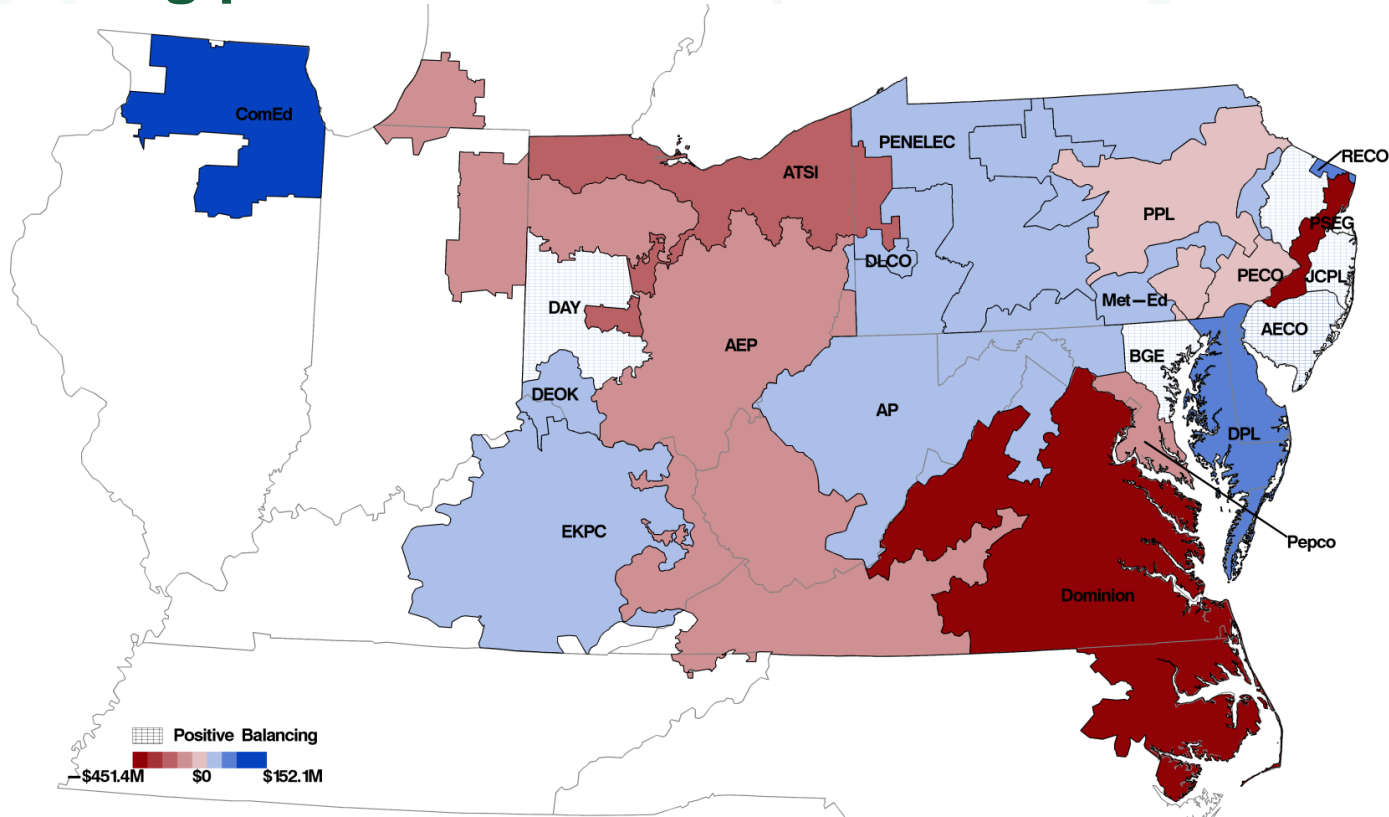
- **Zonal FTR funding and balancing congestion by zone**
 - **Red represents congestion revenues less than target allocations.**
 - **Blue represents congestion revenues greater than target allocations.**



Zonal FTR funding and balancing congestion

- **Positive balancing congestion indicated by fill type.**
 - **Solid fill represents negative balancing congestion.**
 - **Hatched fill represents positive balancing congestion.**
- **As a result of geographic cross subsidies, net negative balancing congestion in a zone does not mean zonal FTR revenues less than target allocation.**

Relative funding and balancing congestion by zone: planning period 2013 to 2014



Monitoring Analytics, LLC

2621 Van Buren Avenue

Suite 160

Eagleville, PA

19403

(610) 271-8050

MA@monitoringanalytics.com

www.MonitoringAnalytics.com

