



# Ramp Rules

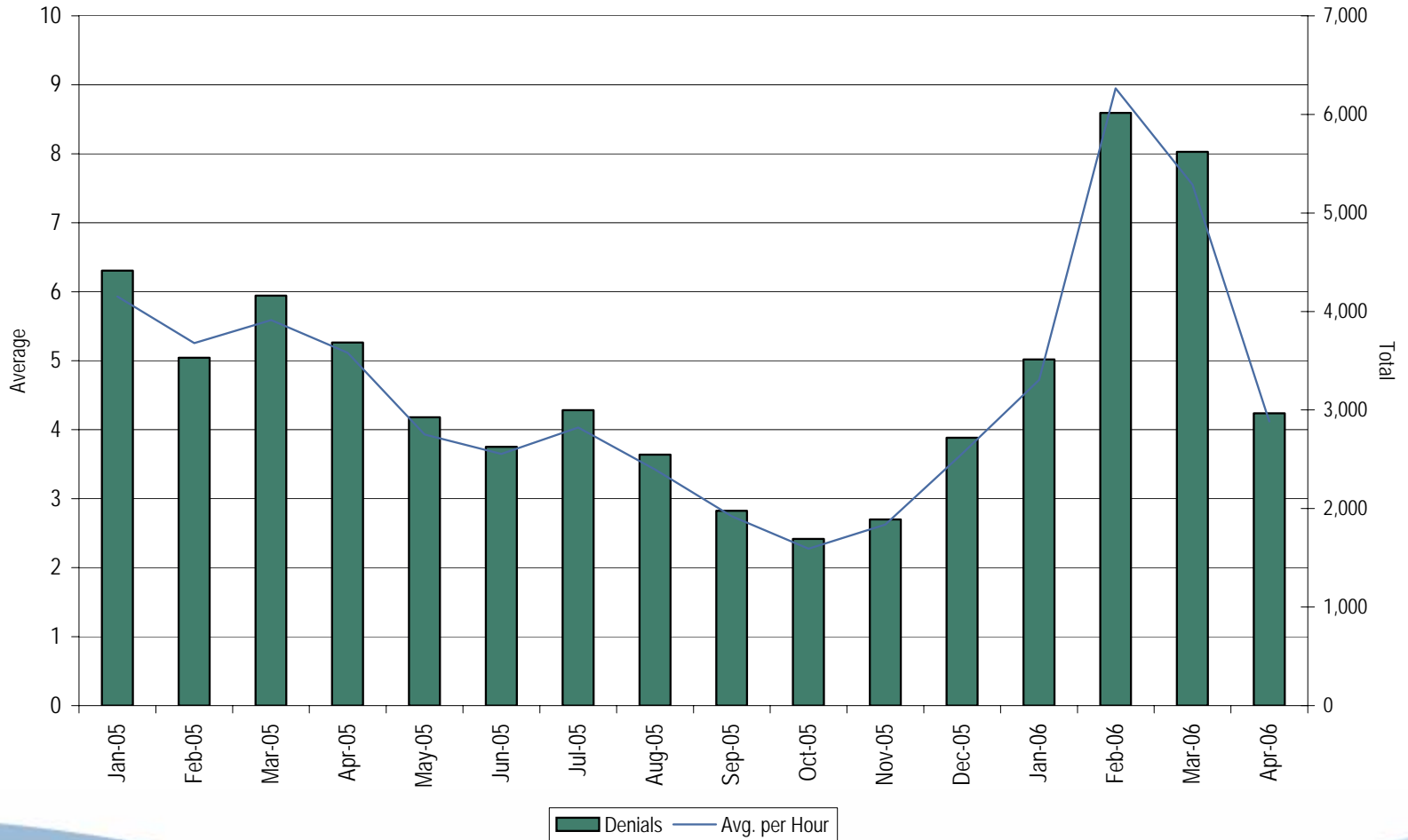
MIC  
May 31, 2006

Joe Bowring  
Market Monitor

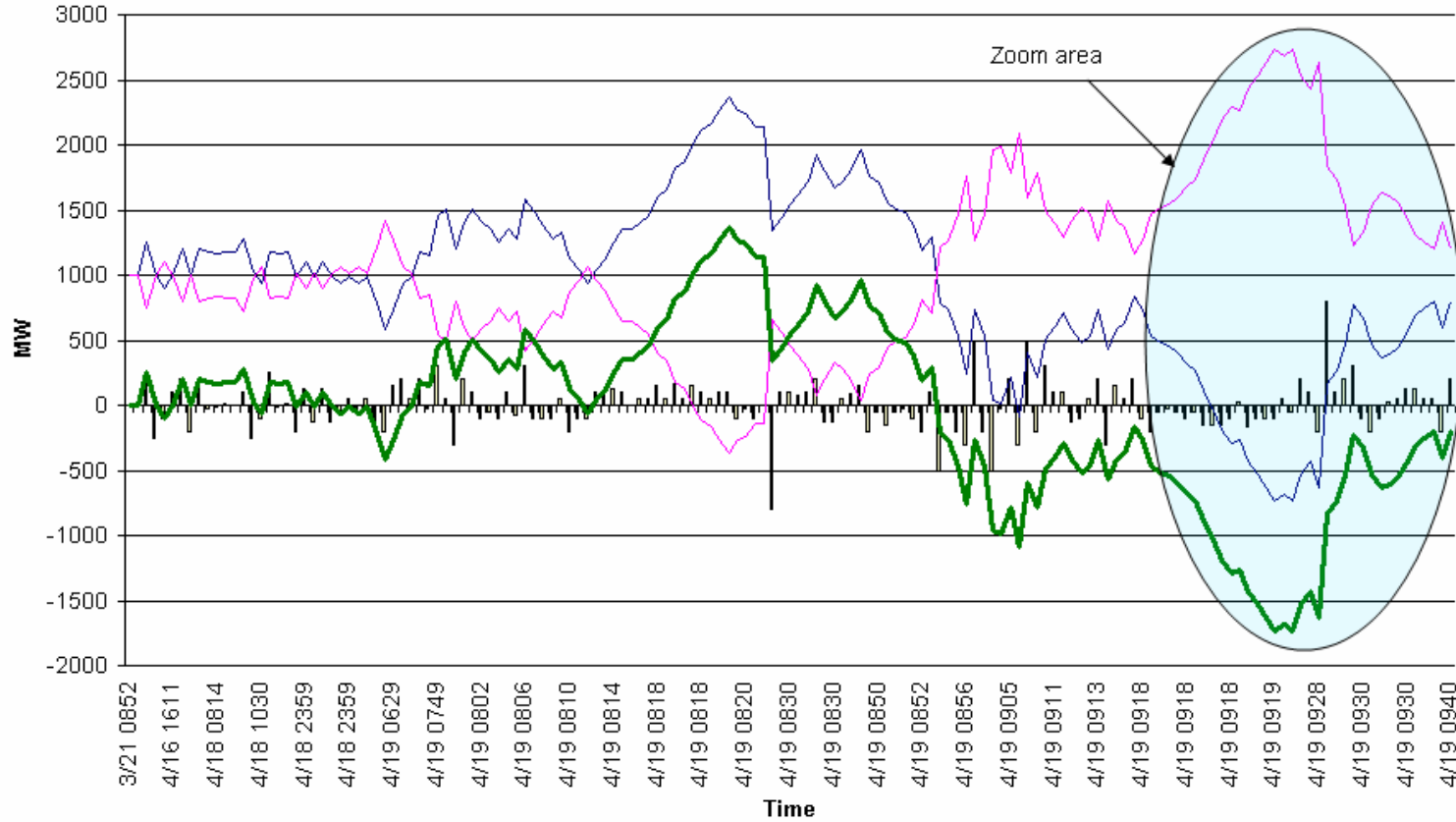
- MMU has received numerous complaints about ramp availability
- MMU has received numerous complaints about large fluctuations in ramp availability
- Data indicate an increase in transactions subject to PJM automatic denial process
- Goal: more efficient use of available ramp

- Current rules permit holding reservation until 30 minutes prior to time of flow
- PJM process automatically denies reservation if transactions components not complete at that time
  - OASIS Reservation
  - NERC TAG
- Proposed rules link timing of automatic denial of reservation to lead time of request and to length of reservation

Number of PJM Automatic RT Ramp Reservation Denials by Month  
(Reservation MW > 0)

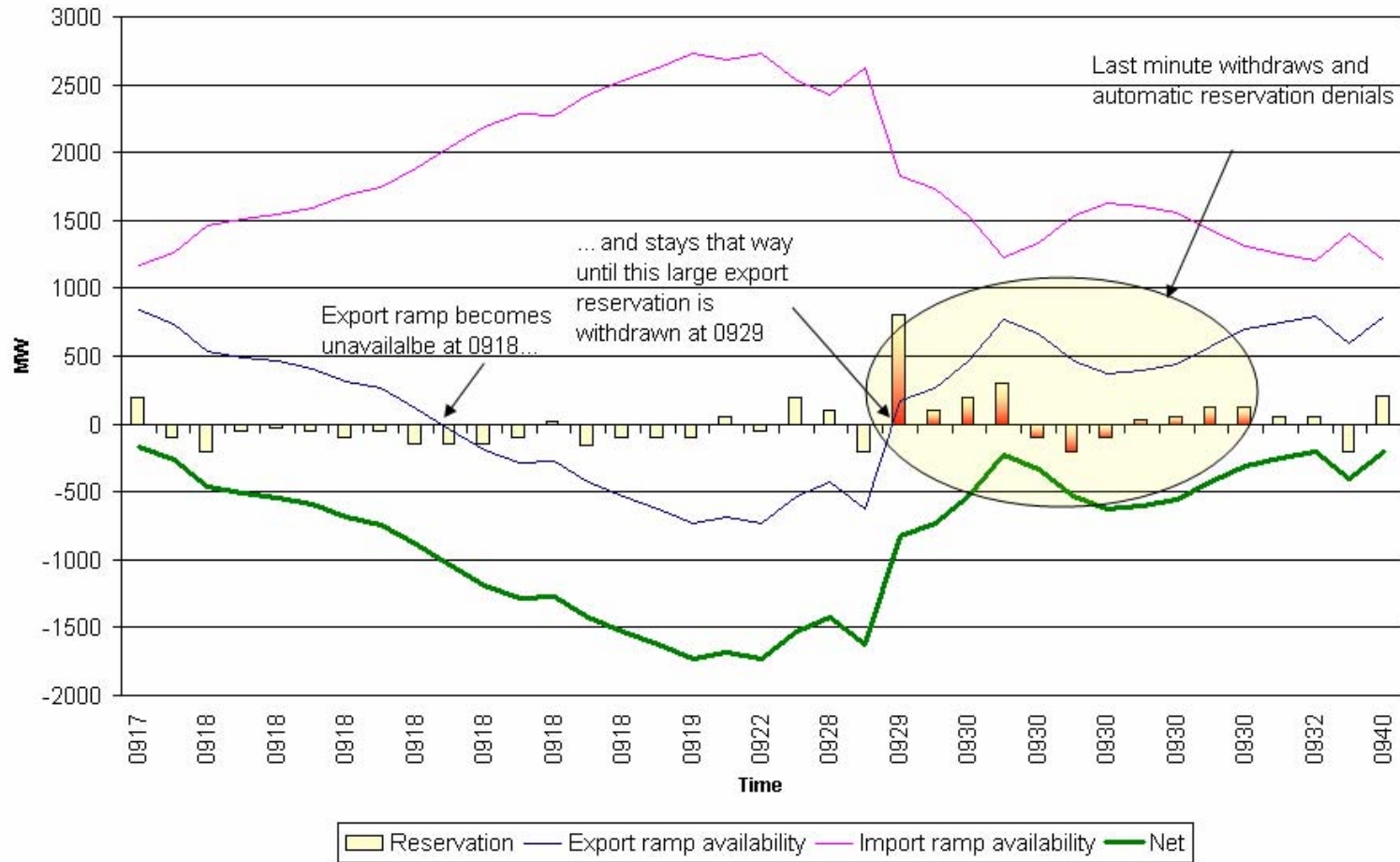


Ramp history for April 19 HB 1000

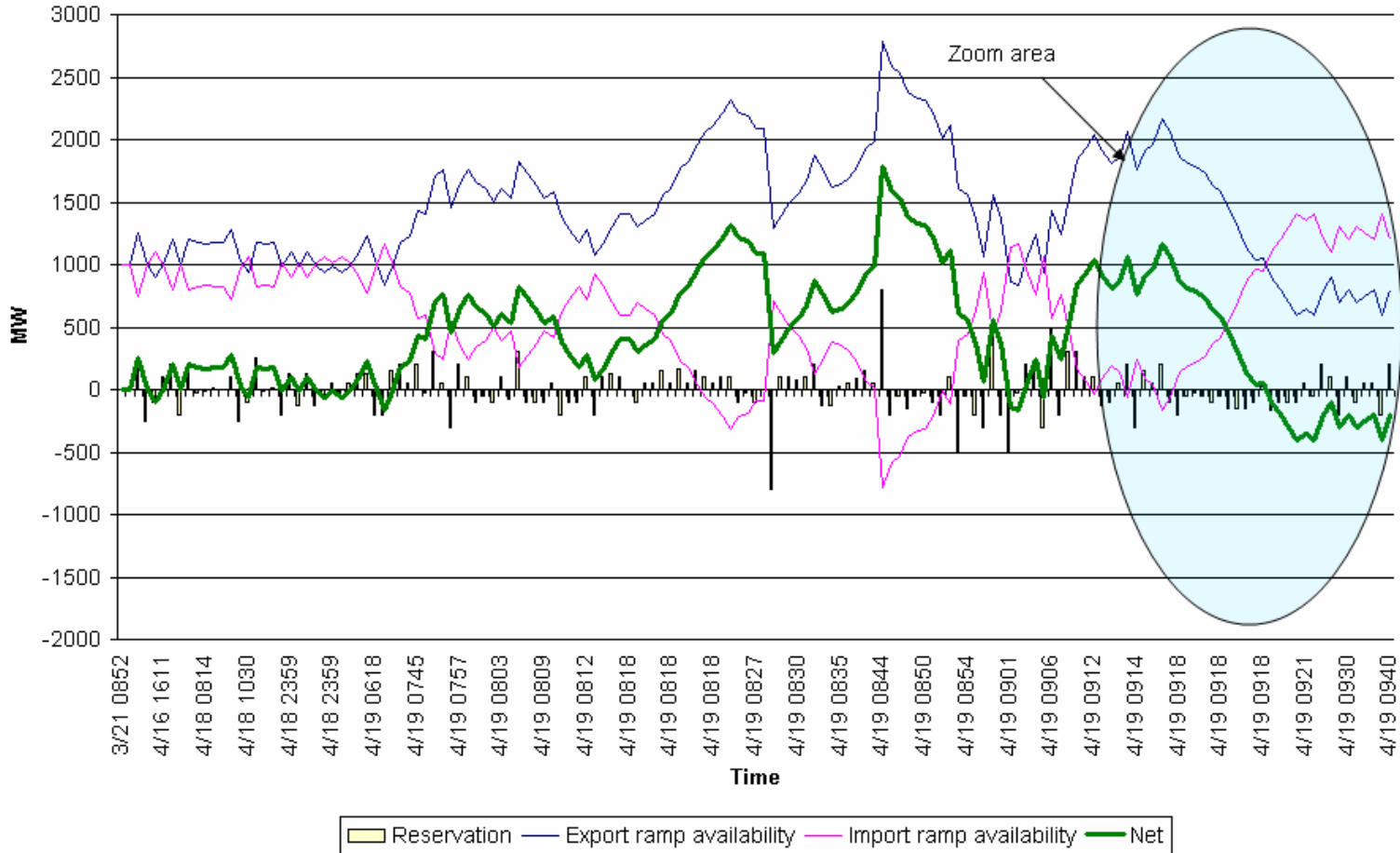


Reservation
Export ramp availability
Import ramp availability
Net

Zoomed ramp history for April 19 HB 1000

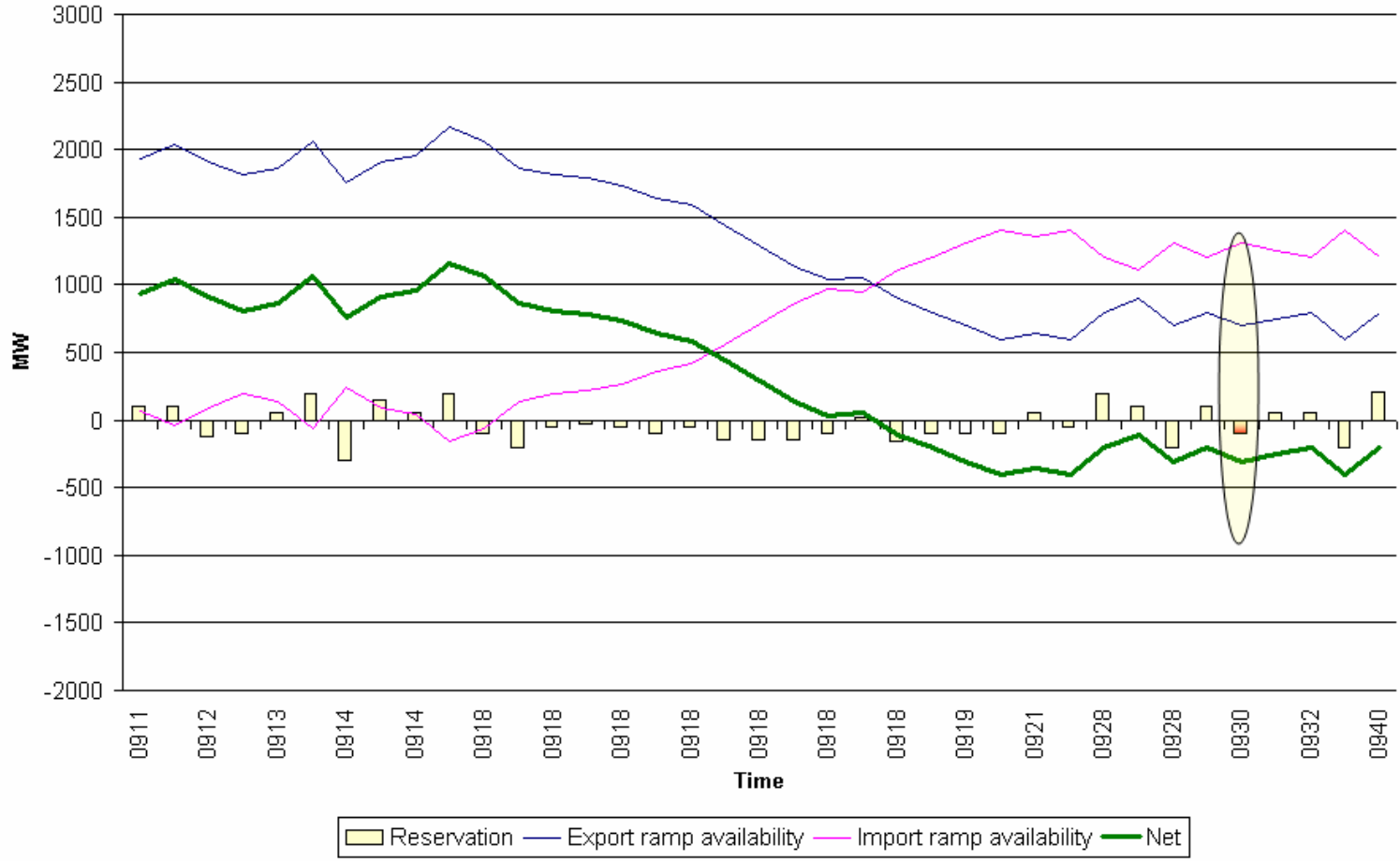


Ramp history for April 19 HB 1000





Zoomed ramp history for April 19 HB 1000





# Automated Denial of Ramp Reservations: *Timing Requirements*

Pending Tag Reservations		
Submission Time	Necessary Action	Length of time to hold reservation
Before 2:00 Day Prior to Start of Reservation	Link Valid NERC Tag which passes validations and is approved	Until 2:00 Day of Submission
After 2:00 Day Prior to Start of Reservation	Link Valid NERC Tag which passes validations and is approved	Until 30 minutes prior to the start of the reservation
In-Queue Reservations		
Reservation Duration	Time Before Start of Reservation Submitted	Length of time to hold reservation
<= 24 hours	Any time	Until 30 minutes prior to the start of the reservation
> 24 hours	Any time	Until 5 hours prior to the start of the reservation

# Automated Denial of Ramp Reservations: *Timing Requirements*

Pending Tag Reservations		
Reservation Duration	Time Before Start of Reservation Submitted	Length of time to hold reservation
$\leq 24$ hours	$\leq 1$ hour	5 minutes
$\leq 24$ hours	$> 1$ hour and $< 4$ hours	15 minutes
$< 24$ hours	$\geq 4$ hours	90 minutes
$\geq 24$ hours	Any time	90 minutes
In-Queue Reservations		
Reservation Duration	Time Before Start of Reservation Submitted	Length of time to hold reservation
$\leq 24$ hours	Any time	Until 30 minutes prior to the start of the reservation
$> 24$ hours	Any time	Until 5 hours prior to the start of the reservation