



MARKET MONITORING PRELIMINARY DEMAND SIDE REVIEW

DSR WG Meeting
December 20, 2002

Joseph E. Bowring
Manager
PJM Market Monitoring Unit



DSM Review

- Performance
 - Emergency
 - ALM
 - Economic
- Issues
 - Timing of implementation of Emergency and ALM
 - Impact of programs on markets
 - Cost effectiveness of programs
 - Impact of program design on relative shares of Economic, Emergency and ALM



Emergency Program

| hour | Data | date | | | Grand Total |
|------------------------------|-----------------|---------------------|--------------------|--------------------|---------------------|
| | | 7/3/2002 | 7/29/2002 | 8/14/2002 | |
| 12 | Reductions (MW) | 11.54 | | | 11.54 |
| | Credits | \$5,896.39 | | | \$5,896.39 |
| | Average LMP | \$115.89 | | | \$115.89 |
| 13 | Reductions (MW) | 39.16 | | | 39.16 |
| | Credits | \$20,304.37 | | | \$20,304.37 |
| | Average LMP | \$66.55 | | | \$66.55 |
| 14 | Reductions (MW) | 65.61 | | | 65.61 |
| | Credits | \$33,909.10 | | | \$33,909.10 |
| | Average LMP | \$132.29 | | | \$132.29 |
| 15 | Reductions (MW) | 74.91 | | | 74.91 |
| | Credits | \$38,735.33 | | | \$38,735.33 |
| | Average LMP | \$101.47 | | | \$101.47 |
| 16 | Reductions (MW) | 70.46 | 17.80 | 25.50 | 113.76 |
| | Credits | \$36,426.15 | \$9,034.12 | \$12,942.14 | \$58,402.41 |
| | Average LMP | \$68.71 | \$499.03 | \$92.16 | \$219.96 |
| 17 | Reductions (MW) | 76.28 | 34.30 | 41.60 | 152.18 |
| | Credits | \$39,559.60 | \$17,408.45 | \$21,113.46 | \$78,081.51 |
| | Average LMP | \$114.99 | \$221.47 | \$64.26 | \$133.57 |
| 18 | Reductions (MW) | 3.38 | 20.25 | 43.30 | 66.93 |
| | Credits | \$1,748.95 | \$10,277.58 | \$21,976.27 | \$34,002.80 |
| | Average LMP | \$153.09 | \$137.85 | \$48.60 | \$113.18 |
| 19 | Reductions (MW) | | | 26.45 | 26.45 |
| | Credits | | | \$13,424.30 | \$13,424.30 |
| | Average LMP | | | \$38.66 | \$38.66 |
| Total Reductions (MW) | | 341.34 | 72.35 | 136.85 | 550.54 |
| Total Credits | | \$176,579.89 | \$36,720.15 | \$69,456.17 | \$282,756.21 |
| Total Average LMP | | \$107.57 | \$286.11 | \$60.92 | \$132.50 |



Emergency Program

| | Date | | |
|-------------------------------|-----------------|------------------|------------------|
| Data | 7/3/2002 | 7/29/2002 | 8/14/2002 |
| Maximum Reduction (MW) | 50.46 | 34.30 | 43.30 |
| Average Payment/MW | \$517.31 | \$507.53 | \$507.53 |



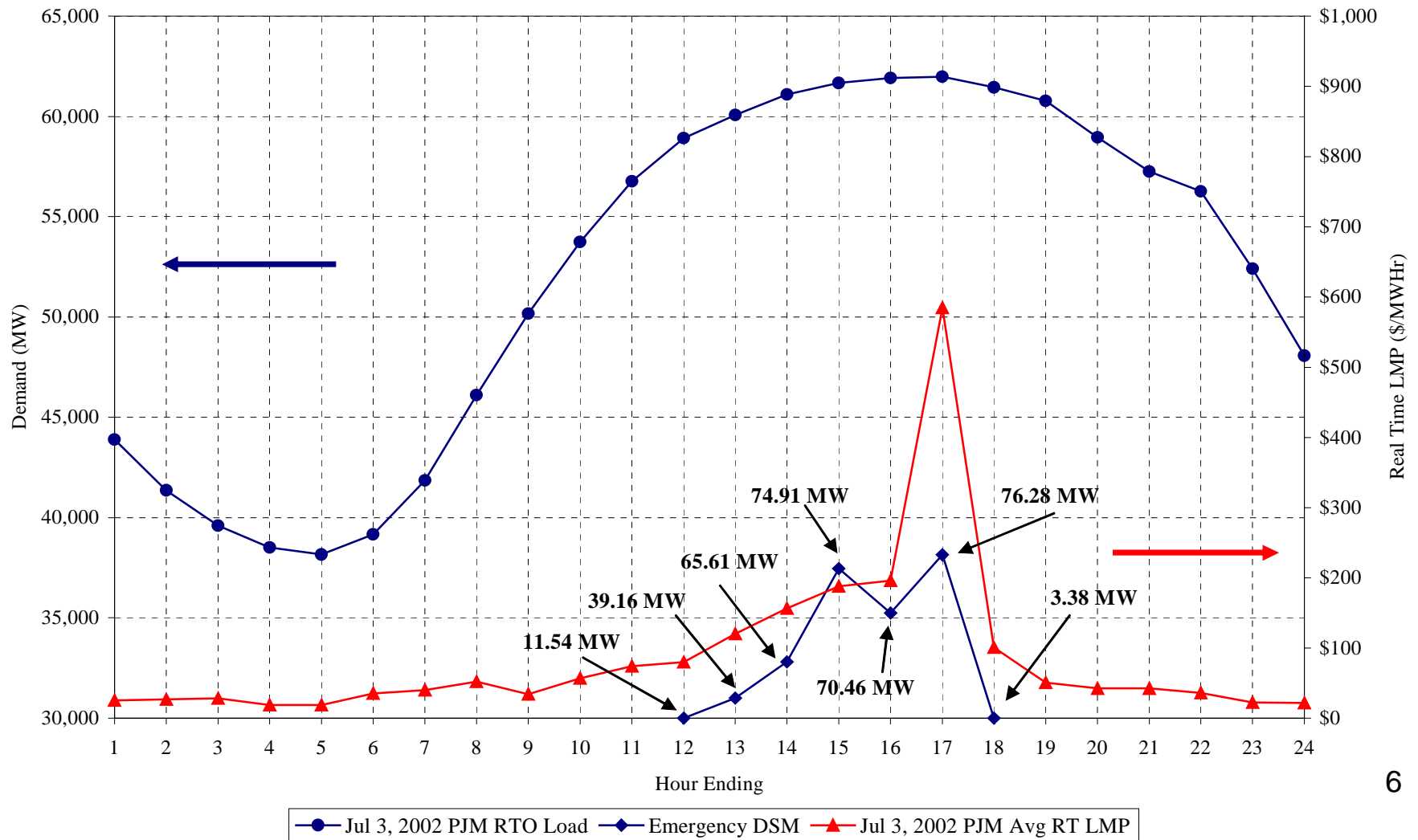
Emergency Program Graphs

- Graphs compare:
 - PJM load by hour
 - PJM average LMP by hour
 - Emergency program reductions by hour
- Emergency program reductions on graphs:
 - Are not to scale
 - Show actual hours of implementation
 - MW reductions are labeled



Emergency Program

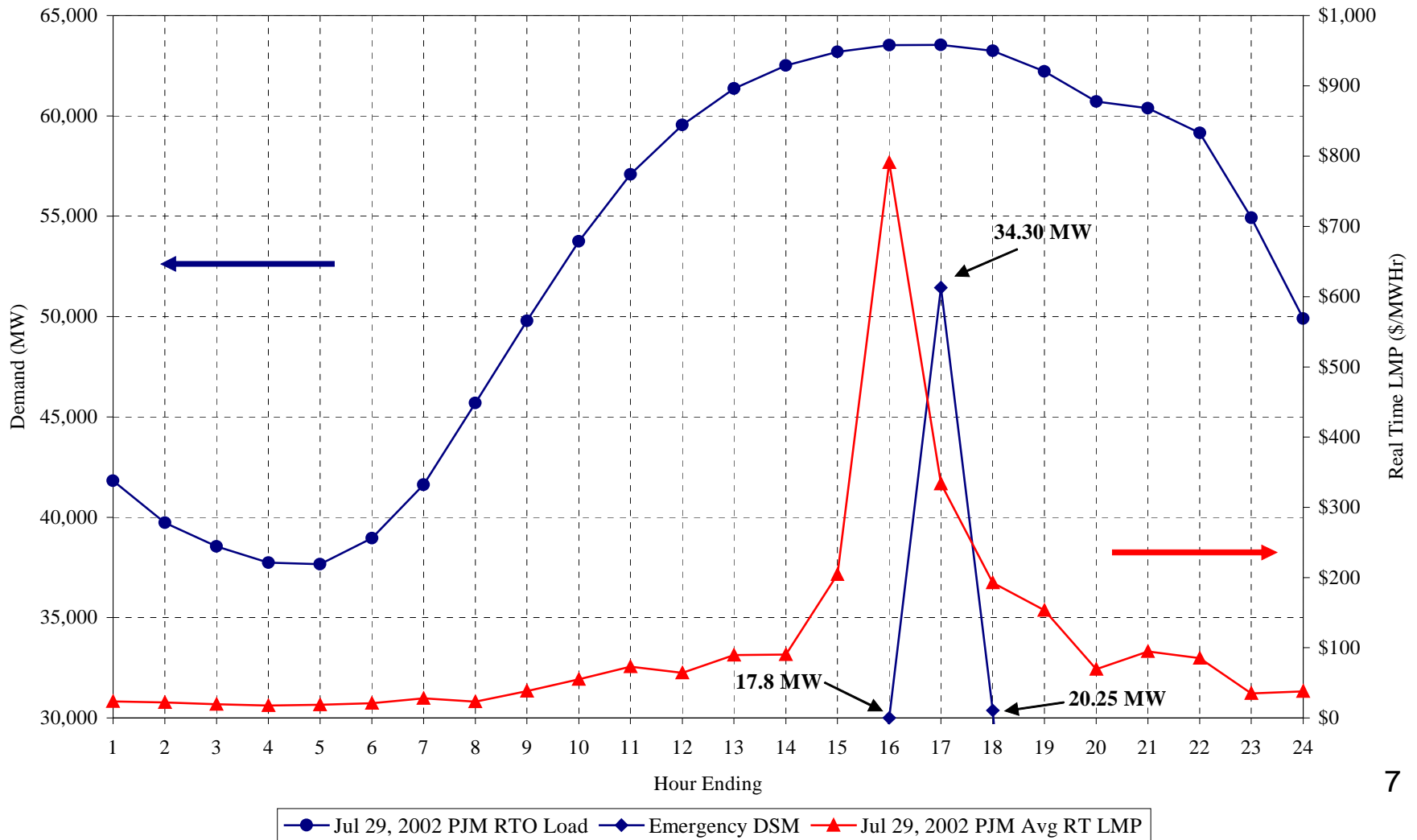
Figure 1
Wednesday 3-Jul-02
DSM Hours Activated





Emergency Program

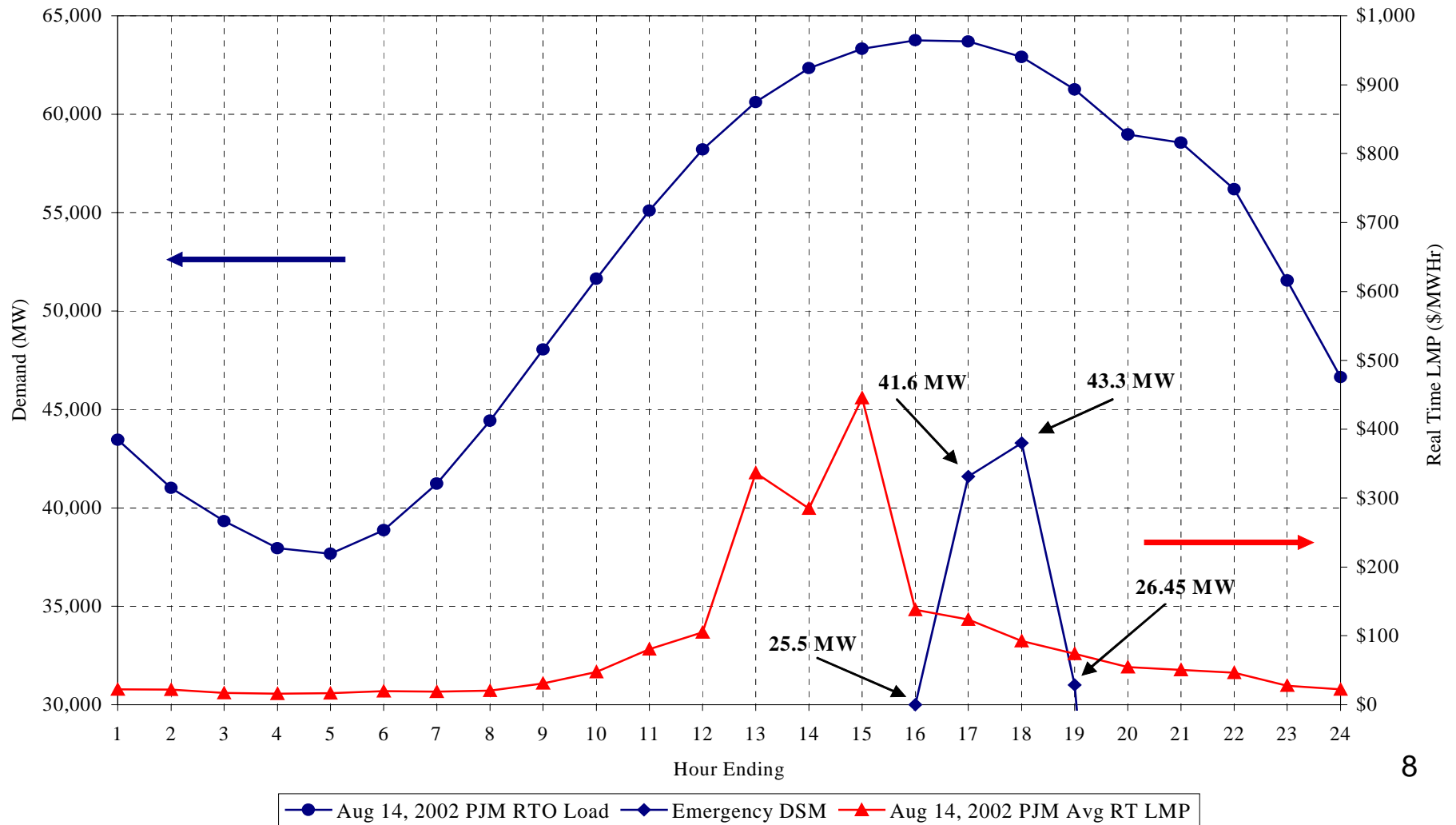
Figure 2
Monday 29-Jul-02
DSM Hours Activated





Emergency Program

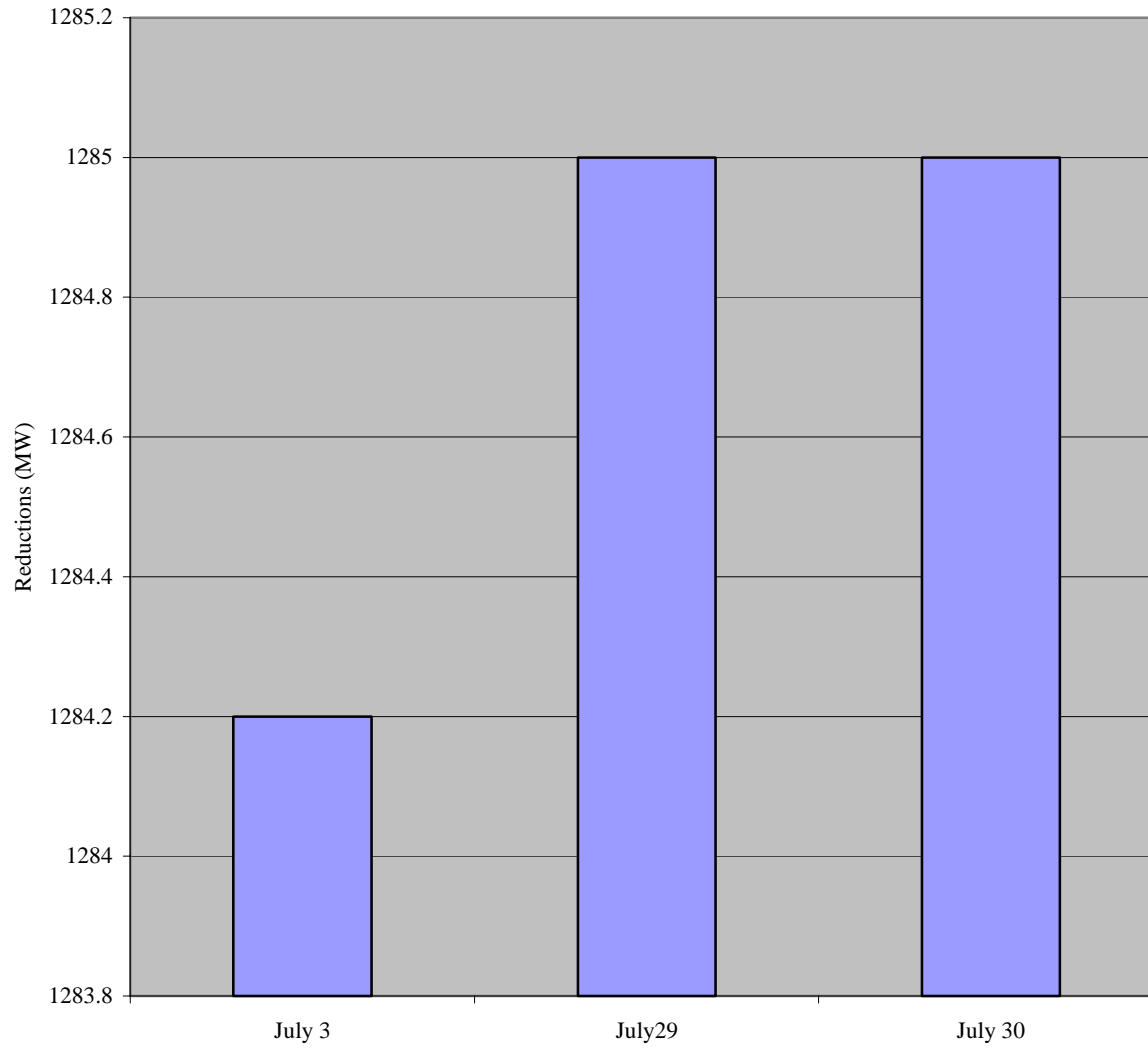
Figure 3
Wednesday 14-Aug-02
DSM Hours Activated





ALM

ALM Reductions 2002





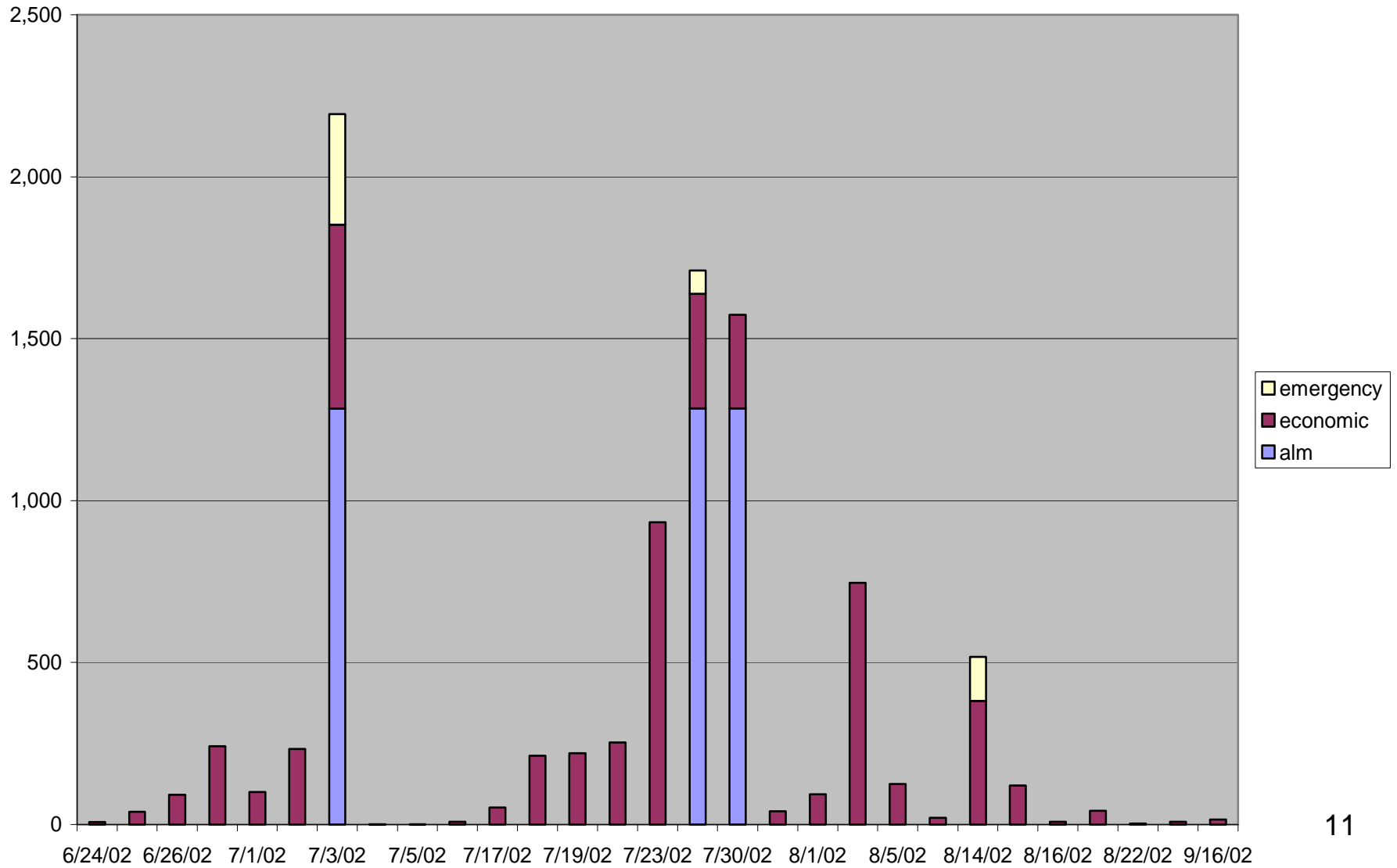
Economic Program

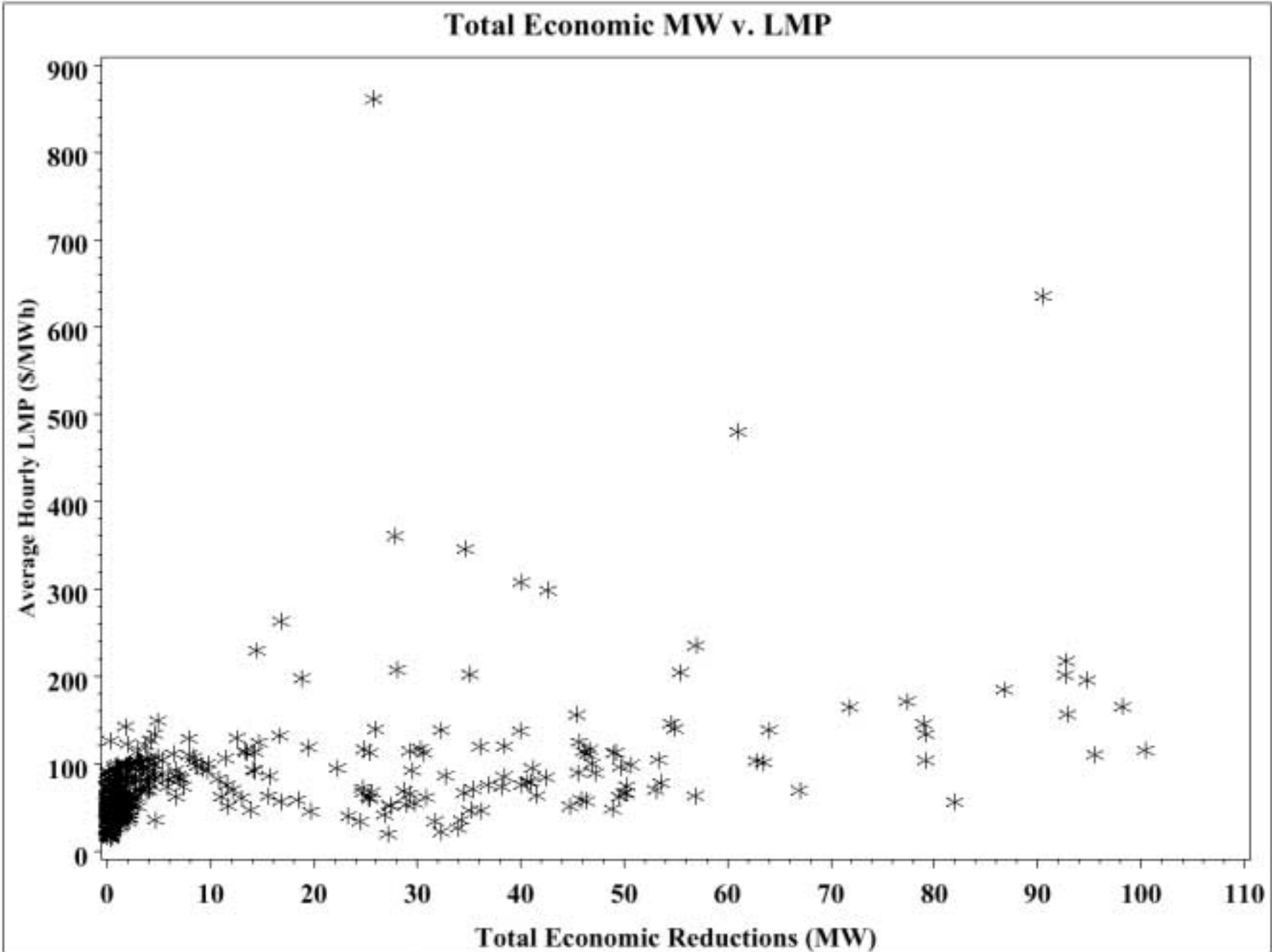
| | |
|-----------------------|--------------|
| Total Reductions (MW) | 6462.09 |
| Total Payments | \$761,977.39 |
| Average LMP | \$118.12 |
| Average Payment/MW | \$117.92 |



Program Comparison

Reductions by Program





1

